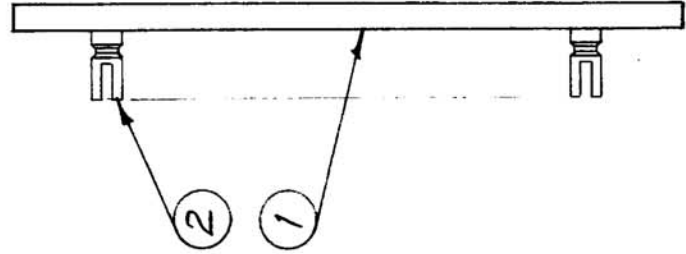
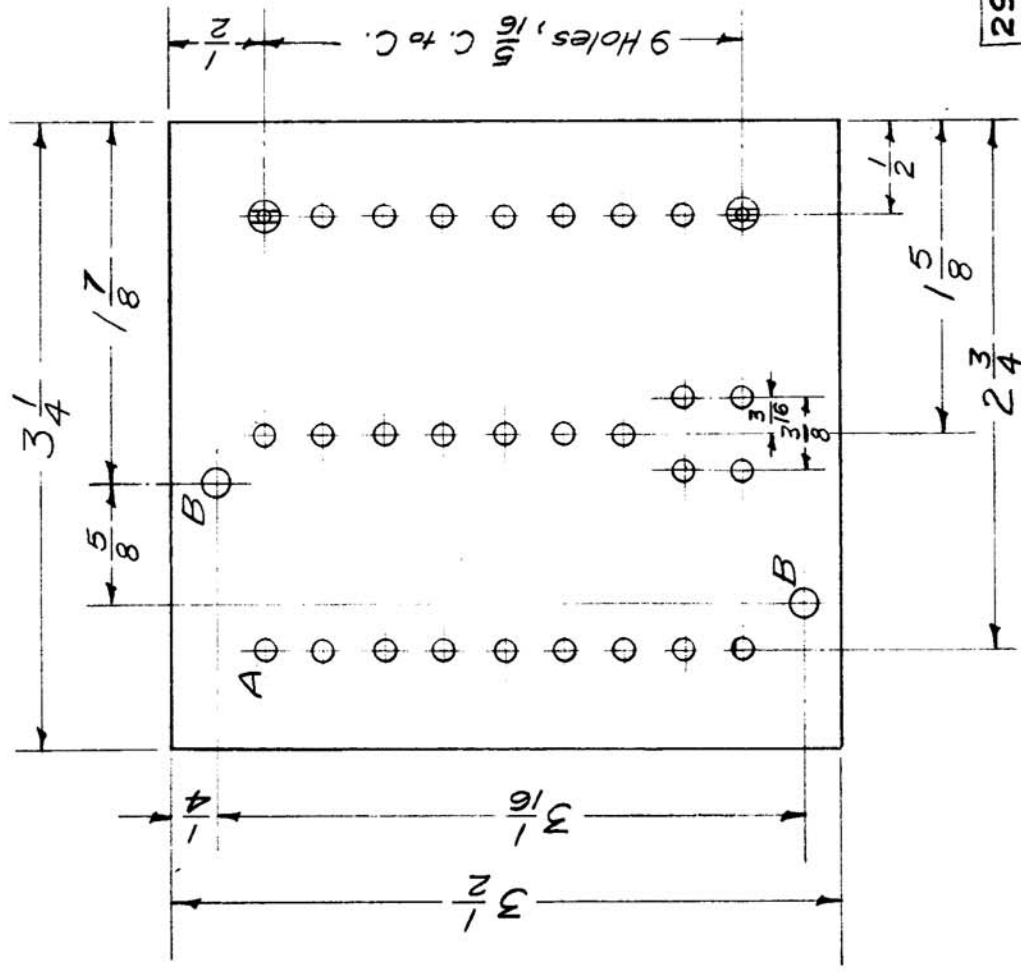


REQ. PER UNIT	1
MODEL	TTU
ASSY. NO.	2A-1395
DATE	1-21-57
USED ON	A-1371

A - #32 Drill (.116) 29 Req.
 B - #27 Drill (.144) 2 Req.



REF.: LD-323 (1 size)

29	2	TE-109-3	Terminal Lug, Split	SYMBOL		
1	1	PX-354	Terminal Board (No Dwg.)			
REQ. ITEM	PART NO.		DESCRIPTION	SYMBOL		
	1/8 THK.					
	STOCK SIZE					
	Phenolic					
	MATERIAL					
XXXP	ff	4-1-21-57	OK	OK		
TYPE & TEMPER		DRAWN	CHECKED	FINAL APPROVAL		
Natural				OK		
FINISH & SPEC. NO.		ELEC. DES. APP. MECH. DES. APP.				
				A-1371		
ISSUE ITEM	CHANGED FROM	DATE	CH. NO.	DRAFTS	CHECKER	ENG. APP.
TOLERANCES						
SCALE:						
MAXIMUM ALLOWABLE TOLERANCES HAVE BEEN DETERMINED AND ANY DEVIATIONS WILL BE CAUSE FOR REJECTION. REMOVE ALL BURRS AND SHARP EDGES						
DEC. DIM. ±	1/64					
FRAC. DIM. ±	1/64					
ANGULAR DIM. ±	1/64					
THE TECHNICAL MATERIEL CORP.		NEW YORK				
MAMARONECK, NEW YORK		SUB - ASSY. (TB201)				
TTU TERMINAL BOARD						