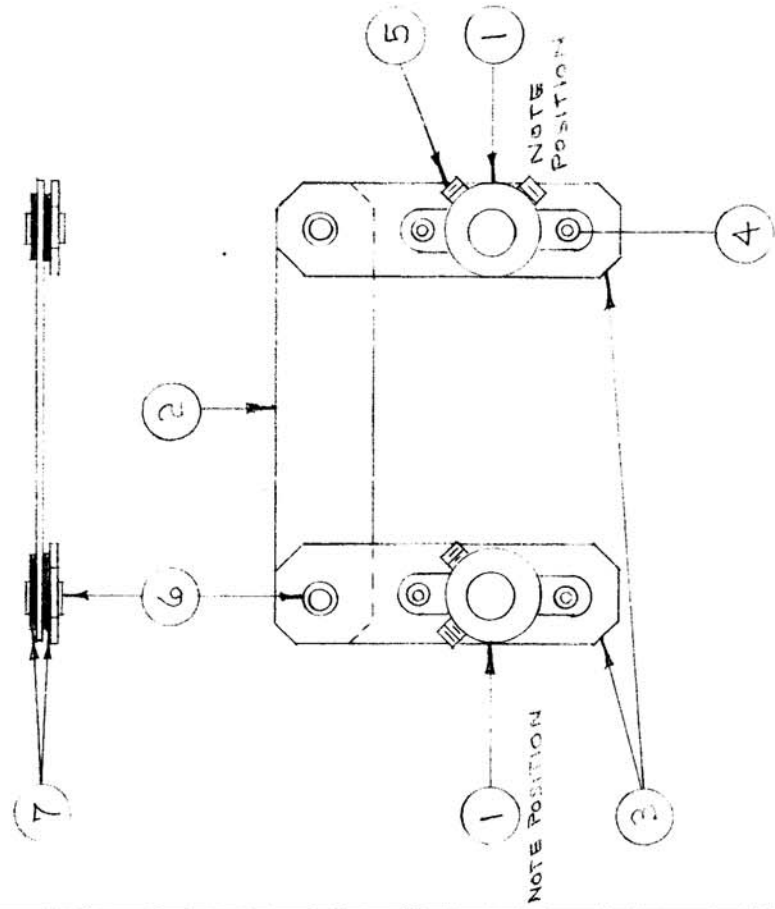


IF IT IS FOUND DESIRABLE TO CHANGE ANY TOLERANCE OR OTHER DETAIL SPECIFIED ON THIS DRAWING NOTIFY THE PURCHASER PROMPTLY.

MAXIMUM ALLOWABLE TOLERANCES HAVE BEEN DETERMINED AND DEVIATIONS WILL BE CAUSE FOR REJECTION. REMOVE ALL BURRS AND SHARP EDGES



A-150	
USED ON	
MODEL	PROJECT NO.
DMK-4	140
ASSY. NO.	DATE
A-167	6-13-52

REQ. ITEM	PART NO.	DESCRIPTION	SYMBOL
4	7	FWD4MBC	
2	6	EY-100-2	
4	5	AN-565-6-4	
4	4	EY-100-1	
2	3	MS-141	
1	2	MS-142	
1	1	MS-105	
		WASHER, FLAT	
		EYELET	
		SCREW HEADLE SET	
		EYELET	
		ARM COUPLING	
		ARM COUPLING	
		COUPLING (PARTS A&B)	

THE TECHNICAL MATERIEL CORP. MAMARONECK, NEW YORK	
COUPLING ASSEMBLY	
HFO SWITCH	
C.D.D. 6-13-52	
DRAWN	ELEC. DES. APP.
HAC	MECH. DES. APP.
CHECKED	FINAL APPROVAL
	A-150

ISSUE ITEM	CHANGED FROM	DATE	CN. NO.	DRAFTS	CHECKER	ENG. APP.
TOLERANCES						
SCALE						
DEC. DIM. ±						
FRAC. DIM. ±						
ANGULAR DIM. ±						
DRILL, PUNCH, COMMERCIAL STOCK SIZES AND MANUFACTURERS TOLERANCES ARE NOT INCLUDED.						