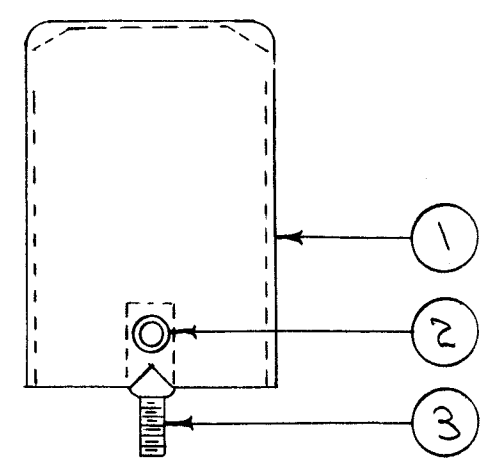
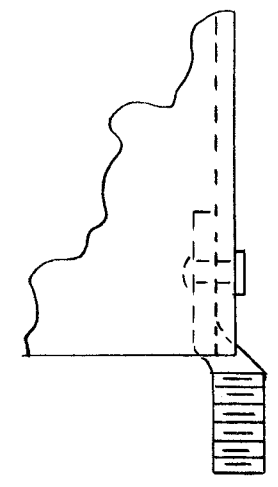
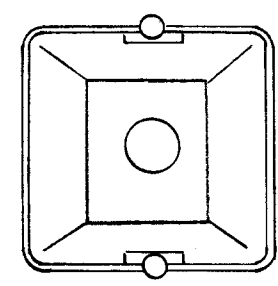


A - 1/8 (.125) D. 2 REQ.
 B - 9/32 (.281) D. 1 " "

MODIFY FP-108-1 AS ABOVE



NOTE THAT LUGS ARE INSIDE THE CAN.



NOTE POSITION OF SPADE BOLT

ISSUE	ITEM	CHANGED FROM	DATE	CH. NO.	DRAFTS	CHECKER	ENG. APP.
D	1	DIM 1 3/32 WAS 2 1/8	5-9-63	8965	[Signature]	[Signature]	[Signature]
C	1	DIM. 2 1/8 WAS 2 3/32	2-11-63	8252	[Signature]	[Signature]	[Signature]
B	1	DIM. CHG. 2 3/32 WAS 2 1/16	12/22/58	589	[Signature]	[Signature]	[Signature]
A	1	REDRAWN COMPLETE REVISION	8/8/56	1	[Signature]	[Signature]	[Signature]

TOLERANCES	SCALE:
DEC. DIM. ±	MAXIMUM ALLOWABLE TOLERANCES HAVE BEEN DETERMINED AND ANY DEVIATIONS WILL BE CAUSE FOR REJECTION. REMOVE ALL BURRS AND SHARP EDGES
FRAC. DIM. ±	
ANGULAR DIM. ±	

REQ. PER UNIT	MODEL	PROJECT NO.	ASS'Y. NO.	DATE
1	FFRD-5,6,7,8	104	A-157	10-18-56
1	FFRD-1,2,3		A-1249	8-8-56
3	FFR	104	A-157	8-8-56

REQ.	ITEM	PART NO.	DESCRIPTION	SYMBOL
2	3	SC-107-1	SPADE BOLT	
2	2	EY-100-1	EYELET	
1	1	FP-108-1	CAN (MODIFIED AS SHOWN)	
THE TECHNICAL MATERIEL CORP. MAMARONECK, NEW YORK				
I.F. CAN ASSEMBLY				
MATERIAL				
TYPE & TEMPER		HEAT TREAT. SPEC.		DRAWN
				CHECKED
				FINAL APPROVAL
				[Signature]
FINISH & SPEC. NO.		ELEC. DES. APP.		MECH. DES. APP.
				A-136 D