

IF IT IS FOUND DESIRABLE TO CHANGE ANY TOLERANCE OR OTHER DETAIL SPECIFIED ON THIS DRAWING NOTIFY THE PURCHASER PROMPTLY.

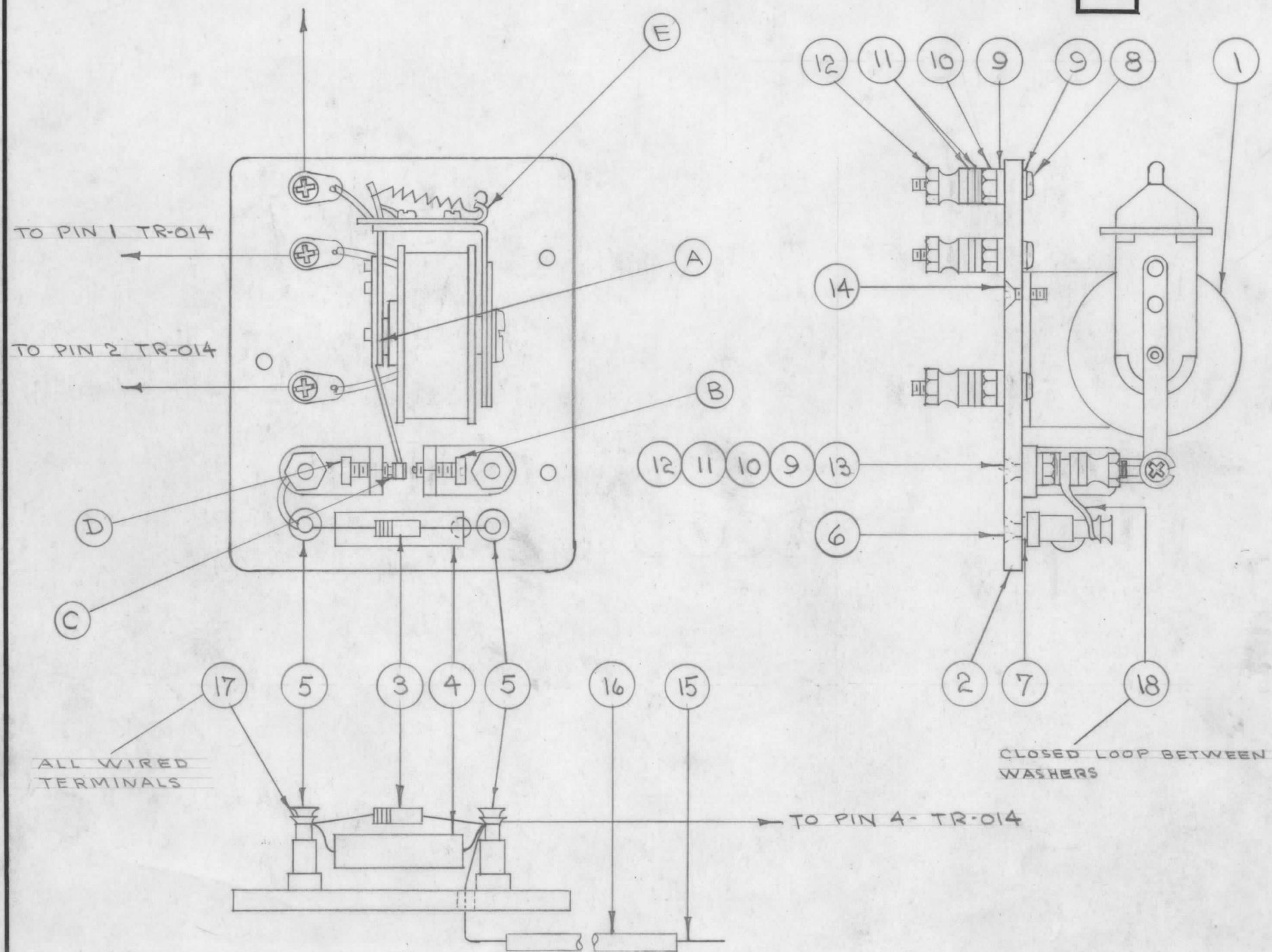
MAXIMUM ALLOWABLE TOLERANCES HAVE BEEN DETERMINED AND DEVIATIONS WILL BE CAUSE FOR REJECTION. REMOVE ALL BURRS AND SHARP EDGES

A-111 C

TEST PROCEDURE

- 1- PUT DOUBLE PIECE OF CANARY YELLOW PAD PAPER BETWEEN ARMATURE AND POLE PIECE AT "A". PRESS ARMATURE AGAINST POLE PIECE AND ADJUST SCREW "B" UNTIL IT JUST HITS CONTACT.
- 2- PLACE PIECE OF TAG BETWEEN SCREW AND CONTACT AT "C". HOLDING ARMATURE AGAINST POLE PIECE ADJUST SCREW "D" FOR LOOSE JUNCTION WITH TAG.
- 3- HOLD RELAY IN OPERATING POSITION (POLE PIECE UPWARD ON EDGE). BEND SPRING RETAINER "E" FOR PROPER SPRING ACTION.
- 4- CHECK OPERATION WITH 12 V. D.C.

TO RG-12/U INSIDE CONDUCTOR



REQ.	ITEM	PART NO.	DESCRIPTION	SYMBOL
1"	18	WL-100-5	WIRE, BUSS BAR	
X	17	BS-100	SOLDER, SOFT	
4"	16	PX-100-1.042	INSULATION, SLEEVING	
5"	15	WL-100-5	WIRE, BUSSBAR	
4	14	SCFP0632BN4	SCREW, MACHINE	
2	13	SCFP0632BN12	SCREW, MACHINE	
5	12	NT-104-1	NUT, THUMB	
10	11	FW06HBN	WASHER, FLAT	
5	10	NTH0632BN10	NUT, HEX	
8	9	LWI06MRN	WASHER, LOCK	
3	8	SCBP0632BN12	SCREW, MACHINE	
2	7	LWE04MRN	WASHER, LOCK	
2	6	SCFP0440BN4	SCREW, MACHINE	
2	5	TE-102-2	TERMINAL, TURRET	
1	4	CN-100-4	CAPACITOR .1uf 400V DC	C3
1	3	RC20GF225K	RESISTOR 2.2 megs 1/2 W.	
1	2	PX-101	BOARD, TERMINAL	
1	1	RL-101	RELAY (LESS MTG. BOARD)	

REQ.	ITEM	PART NO.	DESCRIPTION	SYMBOL
#			THE TECHNICAL MATERIEL CORP. MAMARONECK. NEW YORK	
STOCK SIZE				
#			RELAY, SUB ASSY.	
MATERIAL		WEIGHT PER PC.		
#			C.D.D. 7-17-52	
TYPE & TEMPER			DRAWN	
#			ELEC. DES. APP.	
HEAT TREAT. SPEC.			MECH. DES. APP.	
#			CHECKED	
FINISH & SPEC. NO.			FINAL APPROVAL	

C	+	HDWR UPDATED & STANDARDIZED	64,63	9189				
ISSUE	ITEM	CHANGED FROM	DATE	CN. NO.	DRAFTS	CHECKER	ENG. APP.	
TOLERANCES			SCALE: 1" = 1"					
ALL OTHERS	DEC. DIM. ±	FRAC. DIM. ±	DRILL, PUNCH, COMMERCIAL STOCK SIZES AND MANUFACTURERS TOLERANCES ARE NOT INCLUDED.					

BAC-1-S-20	108	A-110	7-17-52
MODEL	PROJECT NO.	ASS'Y. NO.	DATE
USED ON			

A-111 C