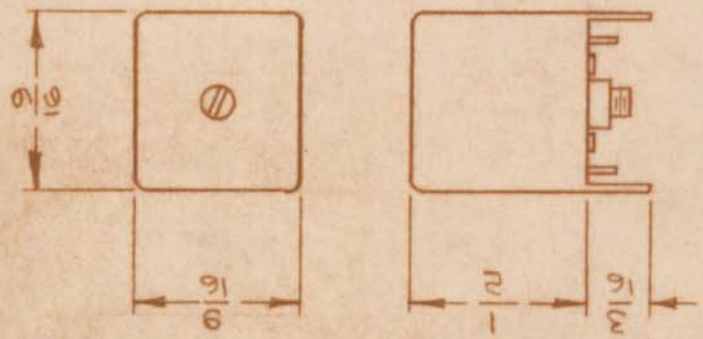


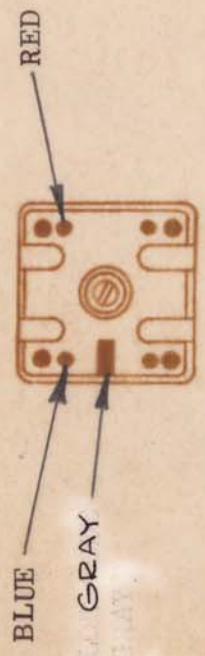
REQ. PER UNIT 3	MODEL	USED ON	DATE 3-25-65
	VLRB-1	ASBY. NO. A3662	

AC179

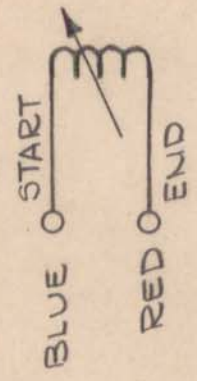


ELECTRICAL SPECIFICATIONS  
(WITH SLUG INSERTED)  
OPERATING FREQUENCY:  
INDUCTANCE: @ 2.5 MC  
PRIMARY:  $19 \mu h \pm 1 \mu h$   
"Q" (PRIMARY) @ 600 KC: 80 MIN.

MECHANICAL SPECIFICATIONS  
TURNS  
PRIMARY: 37  
COLOR CODE: GRAY  
CASE: COPPER CAN  
CASE FINISH: TIN PLATED  
QUANTITY TERM.: 4  
MATERIAL:  
CORE & SLUG: POWDERED IRON



SCHEMATIC DIAGRAM



SYM	DESCRIPTION	DATE	CH. NO.	DRAFTS	CHECKER	ENG. APP.	REQ. ITEM	PART NO.	DESCRIPTION	SYMBOL
							4	4	THE TECHNICAL MATERIEL CORP. MAMARONECK, NEW YORK	
	ORIGINAL RELEASE FOR PRODUCTION	4-2-65	0	98						
X	EXPER. RELEASE	11-2-64	X	HCA					COIL, RF, ADJUSTABLE	
	UNLESS OTHERWISE SPECIFIED DIMENSIONS ARE IN INCHES AND INCLUDE CHEMICALLY APPLIED OR PLATED FINISHES	SCALE						MATERIAL		
	TOLERANCES	FRACTIONS						TYPE & TEMPER	HEAT TREAT. SPEC	
		± 1/64								
		± 0° 30'								
		± 0° 005						FINISH & SPEC. NO.		
		CODE								
		A								
		2A3799								
								H. AUSTIN	DRAWN	
									CHECKED	
										FINAL APPROVAL
										AC179