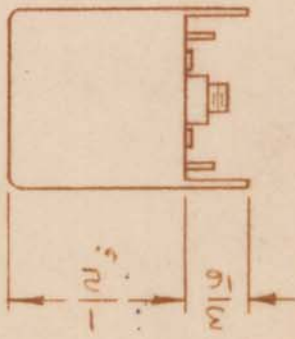
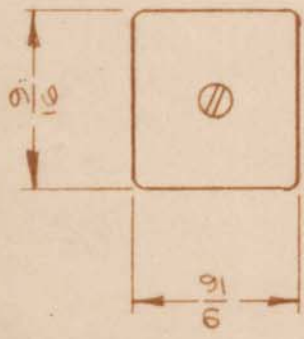
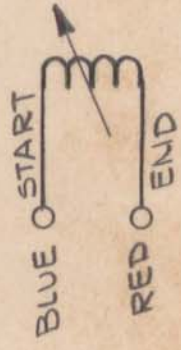


REQ. PER UNIT: 3
 MODEL: VLRB-1
 ASSY. NO.: A 3662
 DATE: 3-25-65
 AC178

ELECTRICAL SPECIFICATIONS
 (WITH SLUG INSERTED)
 OPERATING FREQUENCY:
 INDUCTANCE: @ 2.5 MC
 PRIMARY: 57 μ h \pm 1 μ h
 "Q" (PRIMARY) @ 330 KC: 65 MIN.
 MECHANICAL SPECIFICATIONS
 TURNS
 PRIMARY: 66
 COLOR CODE: GRAY
 CASE: COPPER CAN
 CASE FINISH: TIN PLATED
 QUANTITY TERM.: 4
 MATERIAL:
 CORE & SLUG: POWDERED IRON



SCHEMATIC DIAGRAM



ORIGINAL RELEASE FOR PRODUCTION

EXPER. RELEASE

DATE: 4-7-65
 DATE: 3-25-65
 CH. NO. X
 DRAFTS WLA
 CHECKER
 ENG. APP.
 SCALE
 CODE 2A3798
 A

UNLESS OTHERWISE SPECIFIED DIMENSIONS ARE IN INCHES AND INCLUDE CHEMICALLY APPLIED OR PLATED FINISHES
 TOLERANCES
 DECIMALS
 X \pm .05
 XX \pm .01
 XXX \pm .005
 FRACTIONS
 \pm 1/64
 ANGLES
 \pm 0° 30'

REQ. ITEM	PART NO.	DESCRIPTION	SYMBOL
		THE TECHNICAL MATERIEL CORP. MAMARONECK. NEW YORK	
		COIL, RF, ADJUSTABLE	
		DRAWN: H. AUSTIN	
		CHECKED: [Signature]	
		FINAL APPROVAL: [Signature]	AC178
		ELEC. DES. APP. [Signature]	
		MECH. DES. APP.	