

THE CONTENTS OF THIS DRAWING ARE THE EXCLUSIVE PROPERTY OF THE TECHNICAL MATERIEL CORP. ITS UNAUTHORIZED USE OR REPRODUCTION IN WHOLE OR IN PART IS STRICTLY FORBIDDEN.

REQ. PER UNIT

MODEL

USED ON

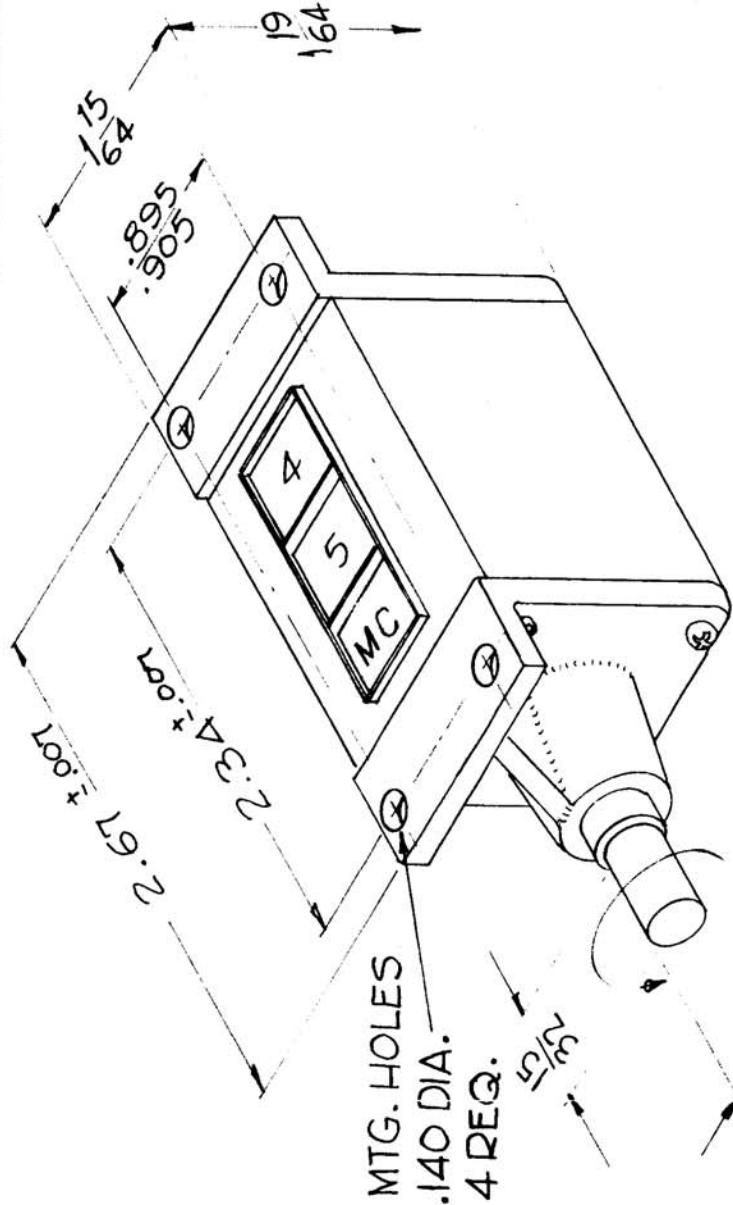
DATE

GPT-40K AX-275

11-4-61

AC-138

C



SPECIFICATIONS ~
 PLAIN BEARING TYPE
 NON RESET
 READINGS ~
 POSITION 1 ~ 2-3 MC
 2 ~ 3-4 MC
 3 ~ 4-5 MC
 4 ~ 5-7 MC
 5 ~ 7-11 MC
 6 ~ 11-15 MC
 7 ~ 15-19 MC
 8 ~ 19-24 MC
 9 ~ 24-28 MC

ROTATION, CCW

.250
.249

SYM	DESCRIPTION	DATE	CH. NO.	DRAFTS	CHECKER	ENG. APP.	REQ. ITEM	PART NO.	DESCRIPTION	SYMBOL	
C	A3116-4 WAS 4A-1821	10-24-66	17075	W40	W40	W40			THE TECHNICAL MATERIEL CORP. MAMARONECK, NEW YORK		
B	ROTATION WAS CW	3-8-66	15934	W40	W40	W40			COUNTER, BANDSWITCH		
A	MC Clarified on Pictorial	12-6-61	5999	I.I.	I.I.	I.I.					
UNLESS OTHERWISE SPECIFIED: DIMENSIONS ARE IN INCHES TOLERANCES ON FRAC. ± 1/6 DEC. ± .005 ANGLES ± 1/2°		SCALE: A3116-4		MAXIMUM ALLOWABLE TOLERANCES HAVE BEEN DETERMINED AND ANY DEVIATIONS WILL BE CAUSE FOR REJECTION. REMOVE ALL BURRS AND SHARP EDGES		TYPE & TEMPER		HEAT TREAT. SPEC.		DRAWN	
										D.P. Man	
										CHECKED	
										FINAL APPROVAL	
										AC-138	
										ELEC. DES. APP. MECH. DES. APP.	