

NOTES:

1. C1, C2 = CERAMIC CAPS
2. C3, C4 = POLYSTYRENE, 2% CAPS
3. C5, C6 = POLY or MYLAR CAPS
4. Q1 = PNP = 2N2907, MPS6518, etc
5. Q2 = NPN = 2N2222, MPS3395, etc
6. R1-R3, R5-R8 = 1/4W 5% RES
7. R4 = TRIMPOT
8. ADJUST R4 AS FOLLOWS
 - (a) DISCONNECT INPUT
 - (b) INSTALL TEST JUMPER JP1
 - (c) CONNECT FREQ. COUNTER TO TP1
 - (d) ADJUST R4 FOR 2210 Hz
 - (e) REMOVE COUNTER, JP1; RECONNECT INPUT
9. ALTERNATE R4 ADJUSTMENT:
 - (a) SEND RYRYRY... IN BAUDOT FROM PCI-4000
 - (b) VIEW FSK OUTPUT WITH SCOPE
 - (c) ADJUST R4 for SYMM M/S OUTPUT WITH TCVR CONNECTED OR WITH 10K PULL-UP RES TO +V

IMPORTANT!

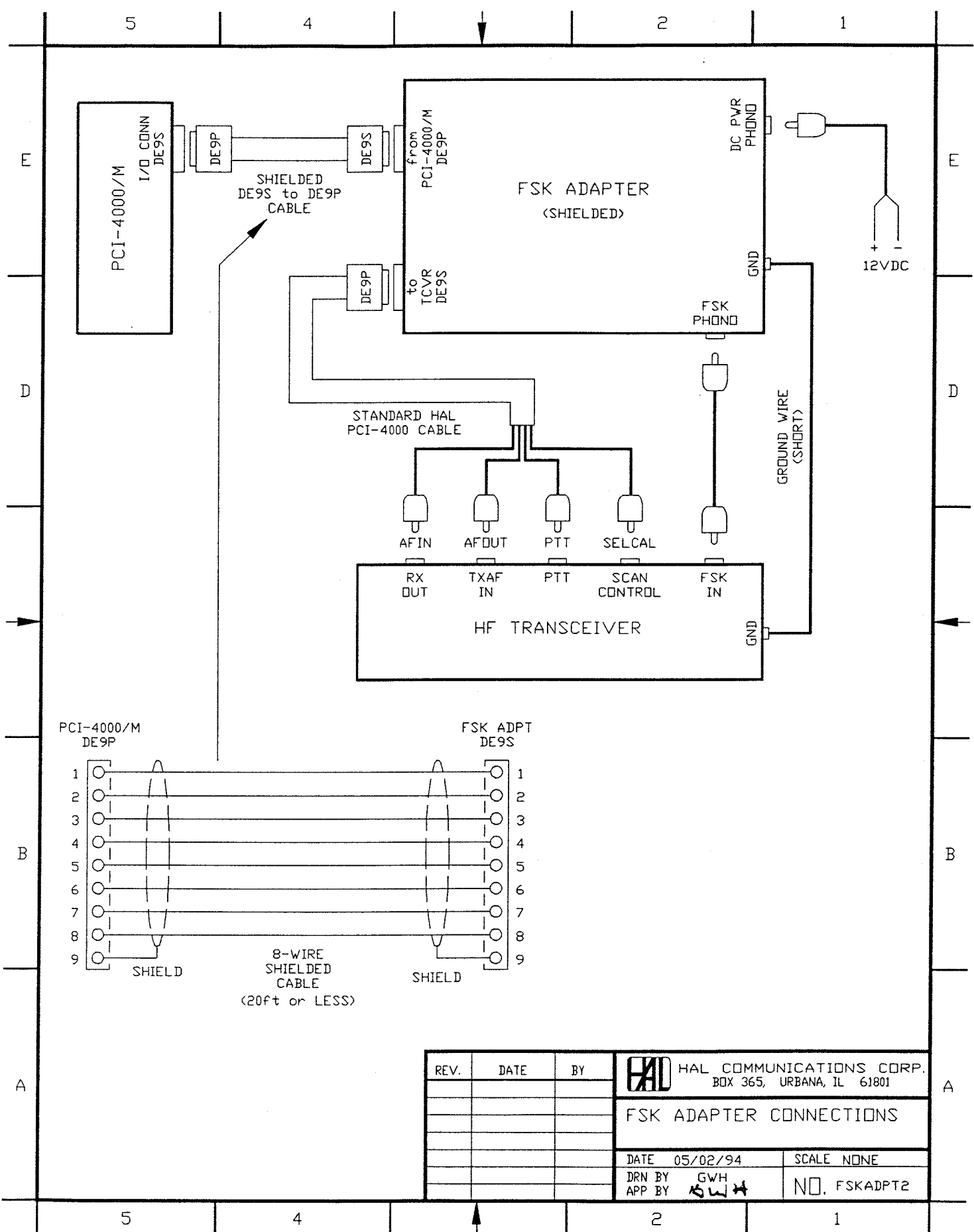
THIS ADAPTER MAY BE USED ONLY TO TRANSMIT FSK MODES (AMTOR, PACTOR, BAUDOT, ASCII)

THIS ADAPTER CANNOT BE USED WHEN TRANSMITTING CLOVER

TO TRANSMIT ALL MODES, PARALLEL-CONNECT PCI-4000 AF OUT TO TX AF-IN AND THIS ADAPTER. USE TCVR FSK FOR FSK MODES AND LSB FOR CLOVER.

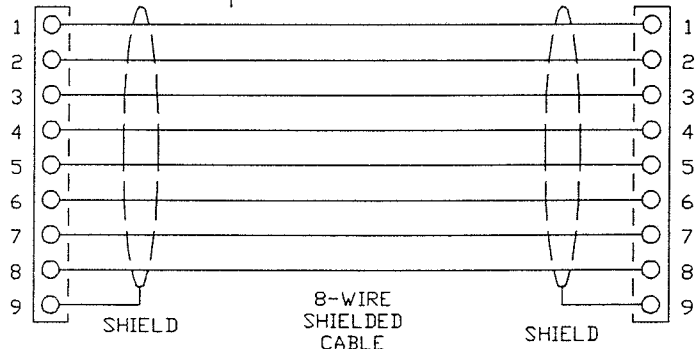
SHIELD THIS CIRCUIT AND LOCATE IT AT THE TCVR REAR PANEL

REV.	DATE	BY	HAL COMMUNICATIONS CORP. BOX 365, URBANA, IL 61801	
			ADAPTER to drive TCVR FSK INPUT from PCI-4000/M	
			DATE 05/02/94	SCALE NONE
			DRN BY GWH	NO. FSKADPT3
			APP BY GWH	



PCI-4000/M
DE9P

FSK ADPT
DE9S



REV.	DATE	BY

HAL HAL COMMUNICATIONS CORP.
BOX 365, URBANA, IL 61801

FSK ADAPTER CONNECTIONS

DATE 05/02/94 SCALE NONE

DRN BY GWH
APP BY *SLH* NO. FSKADPT2