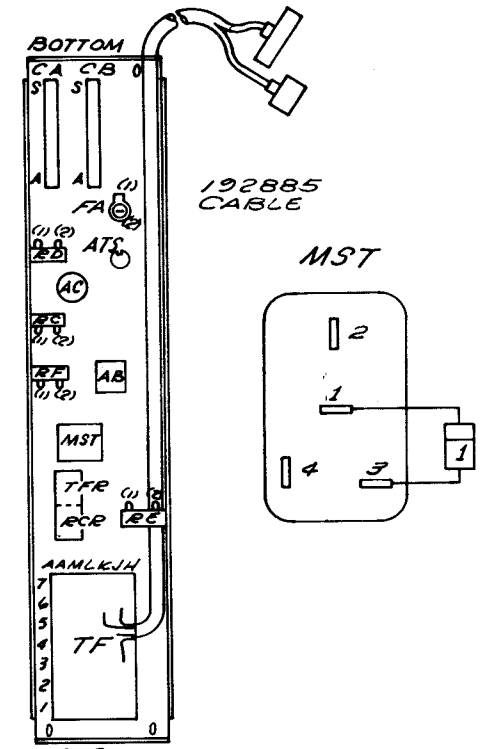


NOTES:
 CONNECT TF-AA6 & TF-AA-7 BY WIRE WRAPING THE EXTENSIONS OF THESE TERMINALS ON THE UNDER SIDE OF THE TERMINAL BOARD.
 * - 192007-TERMINAL φ-72597 RM TERMINAL
 ALL WIRE IS 24 GA. EXCEPT WHERE INDICATED.

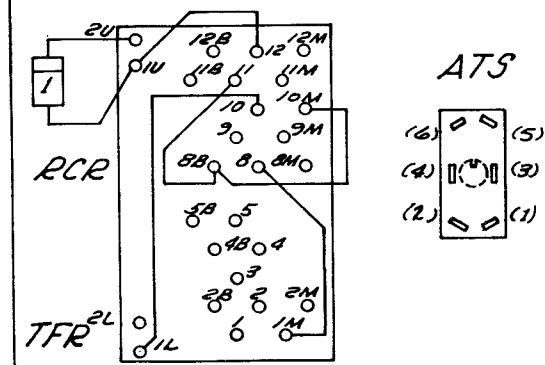
RTTY ELECTRONICS
 TELETYPE=Sales-Service-Parts
 PO Box 20101 El Sobrante, Ca. 94820. (510)222-3102
 mr_rtty@pacbell.net

5864 WD		
ISSUE	DATE	AUTH. NO.
A	9-26-62	74656
B	11-5-62	74656-1
C	3-28-63	75514



TOP AS VIEWED MOUNTED IN UNIT.

NOTE: AS VIEWED FROM REAR (OR BOTTOM SIDE)



SURFACE WIRING FOR LESU 306 (WADS) (ROTR) 35 F

APPROVALS	
D AND R	E OF M
E-NUMBER	
PROD. NO. 5864 WD	
DATE: 6-28-62	
P.D. FILE NO.	
DRAWN G.L.Z.	CHKD.
ENG'D J.A.C.	APPD.

TELETYPE CORPORATION

5864 WD