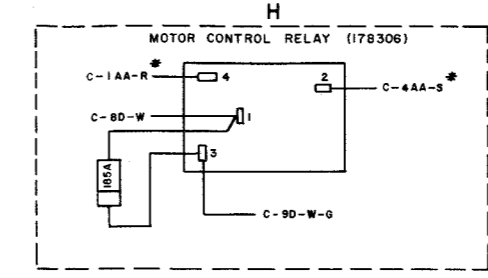
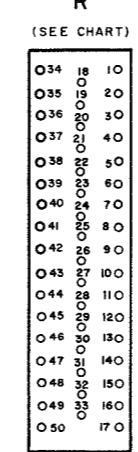
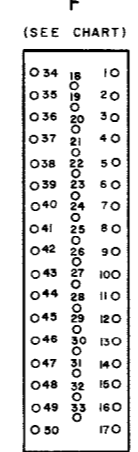
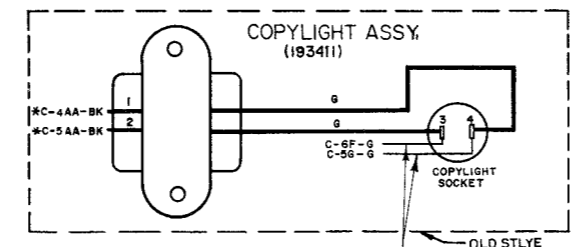
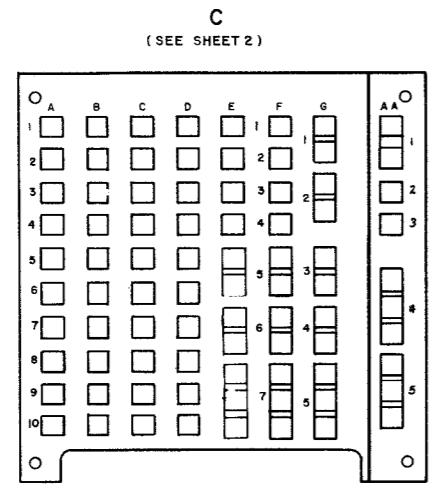


ISSUE	DATE	AUTH. NO.
1	8-14-62	74216
2	8-30-62	74216
3	10-20-63	74216
4	8-2-63	74216
5	8-2-63	74216
6	9-20-63	74216
7	11-14-63	79448
8	5-8-64	81602
9	6-18-64	82075
10	10-27-64	84301

- NO. NOTES
1. WIRING LEGEND:
  2. COLOR CODE:  

BK - BLACK	BK - G - BLACK - GREEN
R - RED	R - BL - RED - BLUE
O - ORANGE	R - Y - RED - YELLOW
G - GREEN	BK - R - BLACK - RED
BL - BLUE	W - BR - WHITE - BROWN
P - PURPLE	W - O - WHITE - ORANGE
W - WHITE	W - G - WHITE - GREEN
S - SLATE	W - P - WHITE - PURPLE
  3. UNIT WIRED FOR 117 VOLTS, 60 CYCLE, A.C. POWER INPUT ONLY.
  4. PLUGS VIEWED FROM SOLDER TERMINAL ENDS.
  5. FOR SCHEMATIC SEE 4936-B1 & B2WD.
  6. \* ASTERISK DENOTES #18 GA. WIRE.
  7. NO WIRING SHALL BE DONE TO I65729 TERMINAL STRIP IN LAC CABINET APPARATUS RACK BY TELETYPE CORP. WIRING SHALL BE DONE BY EQUIPMENT INSTALLER.
  8. SELECTOR MAGNET DRIVER ACTUAL WIRING DIAGRAM IS 5826 WD.
  9. UNITS USING VARIABLE CURRENT SELECTOR MAGNET DRIVER WITH 193440 CIRCUIT CARD ARE WIRED PER PAGES 1 AND 2. UNITS USING CONSTANT CURRENT SELECTOR MAGNET DRIVER WITH 182630 CIRCUIT CARD ARE WIRED PER PAGES 3 AND 4.

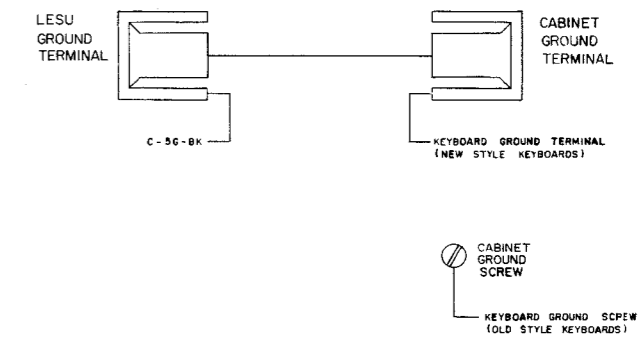
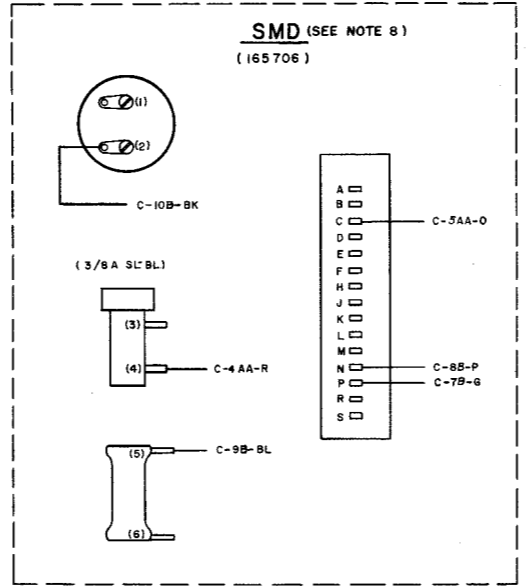
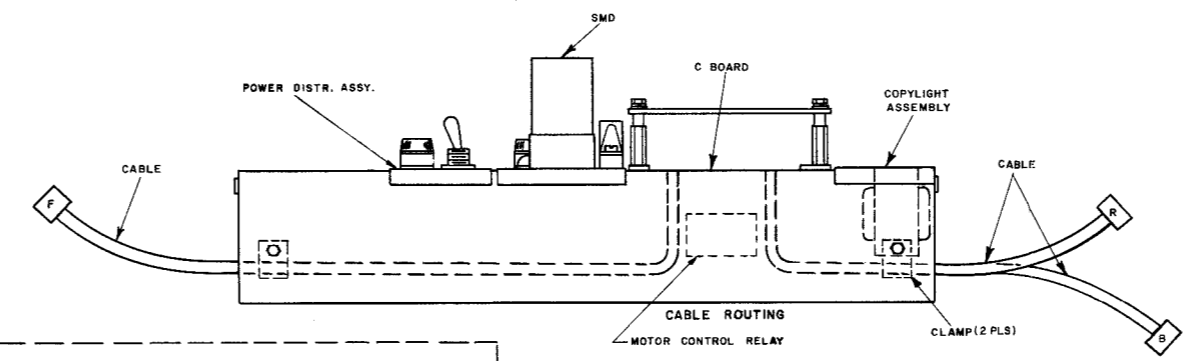
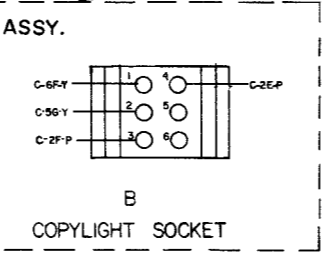
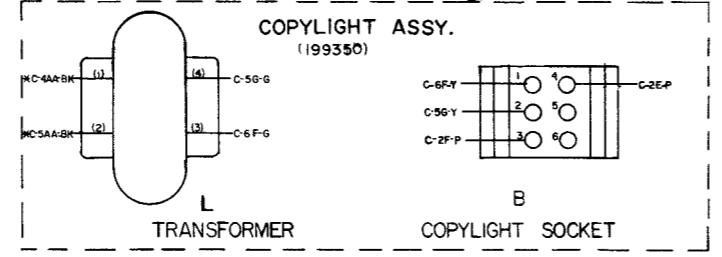
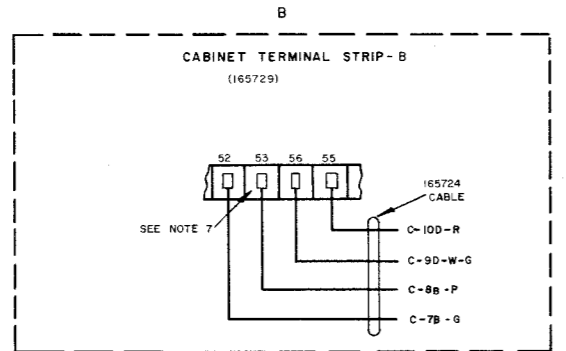
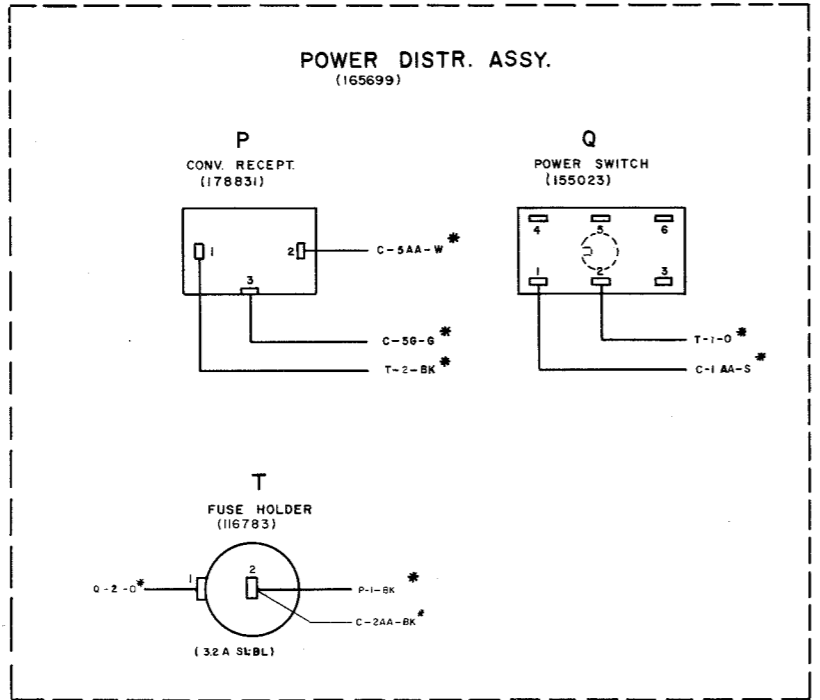


LEADS CONNECTED TO MAIN BOARD

TERMINAL DESIG.	TERMINATING POINT ON CONN.	COLOR
C-9B	R1	O
C-10B	R2	W-BR
C-3C	R4	W-G
C-4C	R5	W-P
C-ID	R29	W-O
C-2D	R34	BK-G
C-3D	R35	R-BL
C-4D	R36	R-Y
C-5D	R37	BK-R
C-8C	F5	S
C-7C	F6	P
C-2AA	F17	W*
C-7AA	F32	R*
C-4AA	F50	BL*

LEADS CONNECTED TO MAIN BOARD

TERMINAL DESIG.	TERMINATING POINT	COLOR
C-2AA	T2	BK*
C-1AA	Q1	S*
C-1AA	H4	R*
C-4AA	L1	BK*
C-4AA	H2	S*
C-5AA	L2	BK*
C-5AA	P2	W*
C-8D	H1	W
C-9D	H3	W-G
C-9D	B56	W-G
C-10D	B55	R
C-7B	B52	G
C-8B	B53	P
C-5G	L4	G
C-6F	L3	G
C-5G	P3	G*
C-4AA	SMD 4	R
C-5AA	SMD C	O
C-7B	SMD P	G
C-8B	SMD N	P
C-9B	SMD 5	BL
C-10B	SMD 2	BK
C-5G	GND	BK*



RTTY ELECTRONICS  
 TELETYPE=Sales-Service-Parts  
 PO Box 20101 El Sobrante, Ca.  
 94820. (510)222-3102  
 mr\_rtty@pacbell.net

SEE NOTE 9  
 SHEET 1 OF 4

ACTUAL WIRING DIAGRAM  
 LESU 304 (R0)

APPROVALS  
 D AND R E OF M  
 E NUMBER  
 PROD. NO. 4934 WD  
 DATE: 5-31-62  
 P.D. FILE NO. I-159.1515A  
 DRAWN M.K. CHKD [Signature]  
 ENGD W.T.C. APPD [Signature]

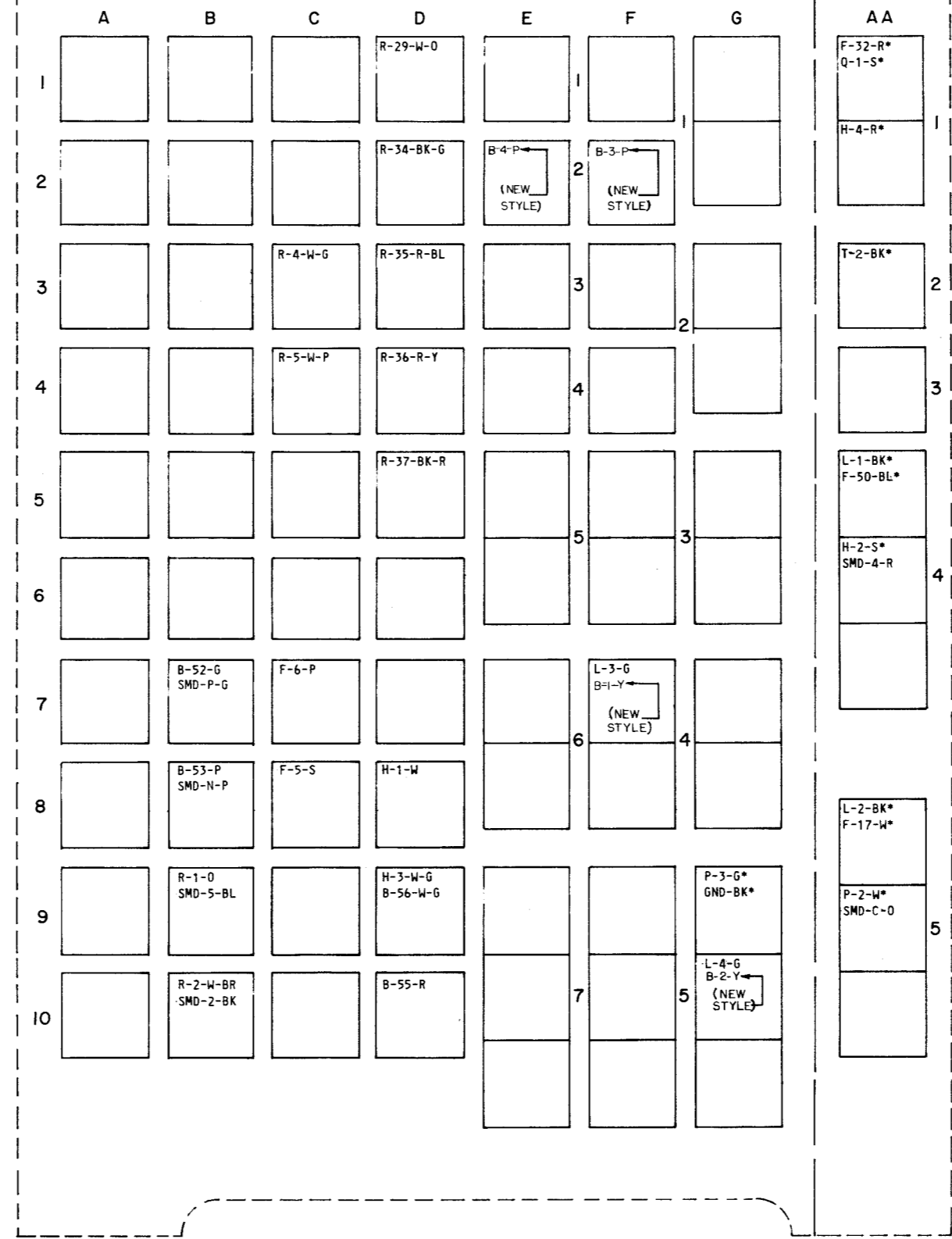
TELETYPE CORPORATION  
 4934 WD

# 4934WD

REVISIONS		
ISSUE	DATE	AUTH. NO.
5	9-26-63	77905
6	11-14-63	78849
7	5-8-64	81602
8	6-16-64	82025
9	8-28-64	82966
10	10-27-64	84301

RTTY ELECTRONICS  
 TELETYPE=Sales-Service-Parts  
 PO Box 20101 El Sobrante, Ca.  
 94820. (510)222-3102  
 mr\_rtty@pacbell.net

## C MAIN WIRING FIELD



SEE NOTE 9 PAGE 1

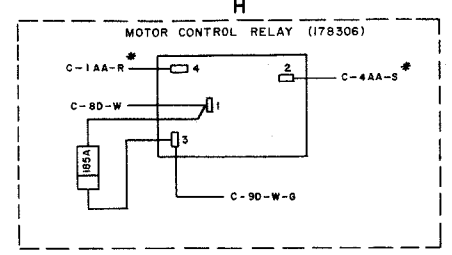
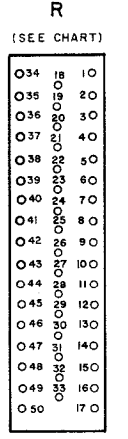
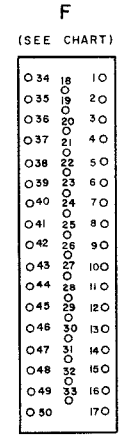
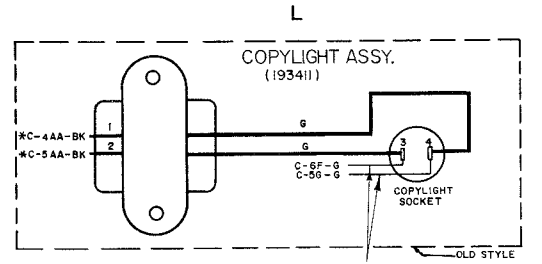
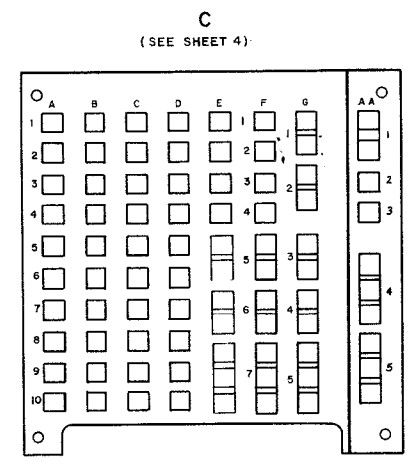
SHEET 2 OF 4

ACTUAL  
 WIRING DIAGRAM  
 FOR  
 LESU304  
 (RO)  
 35 D

APPROVALS	
D AND R	E OF M
E-NUMBER	
PROD. NO. 4934WD	
DATE 9-12-63	
P.D. FILE NO. 1-159.151AA	
DRAWN R.G.K./D.M.	CHKD.
ENGD. G.E.W.	APPD.

TELETYPE  
 CORPORATION  
**4934WD**

- NO. NOTES
1. WIRING LEGEND:
  2. COLOR CODE:  
 BK - BLACK    BK - G - BLACK - GREEN  
 R - RED        R - BL - RED - BLUE  
 O - ORANGE    R - Y - RED - YELLOW  
 G - GREEN      BK - R - BLACK - RED  
 BL - BLUE      W - BR - WHITE - BROWN  
 P - PURPLE    W - O - WHITE - ORANGE  
 W - WHITE      W - G - WHITE - GREEN  
 S - SLATE      W - P - WHITE - PURPLE
  3. UNIT WIRED FOR 117 VOLTS, 60 CYCLE, A.C. POWER INPUT ONLY.
  4. PLUGS VIEWED FROM SOLDER TERMINAL ENDS.
  5. FOR SCHEMATIC SEE 4936-B1 & B2WD.
  6. \* ASTERISK DENOTES #18 GA. WIRE.
  7. NO WIRING SHALL BE DONE TO 165729 TERMINAL STRIP IN LAC CABINET APPARATUS RACK BY TELETYPE CORP. WIRING SHALL BE DONE BY EQUIPMENT INSTALLER.
  8. SELECTOR MAGNET DRIVER ACTUAL WIRING DIAGRAM IS 5983 WD.
  9. UNITS USING VARIABLE CURRENT SELECTOR MAGNET DRIVER WITH 193440 CIRCUIT CARD ARE WIRED PER PAGES 1 AND 2. UNITS USING CONSTANT CURRENT SELECTOR MAGNET DRIVER WITH 182630 CIRCUIT CARD ARE WIRED PER PAGES 3 AND 4.

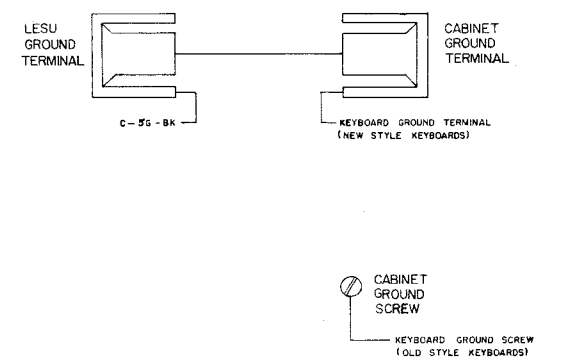
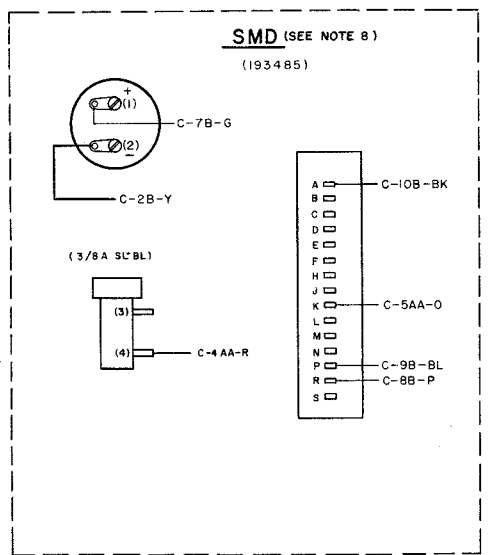
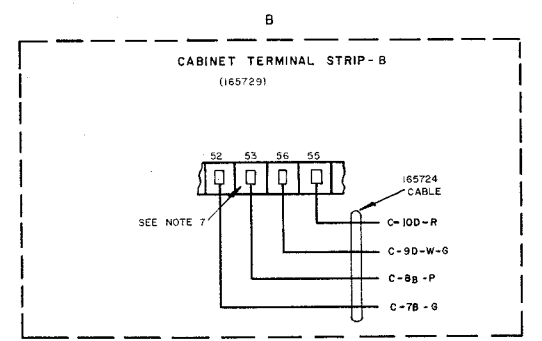
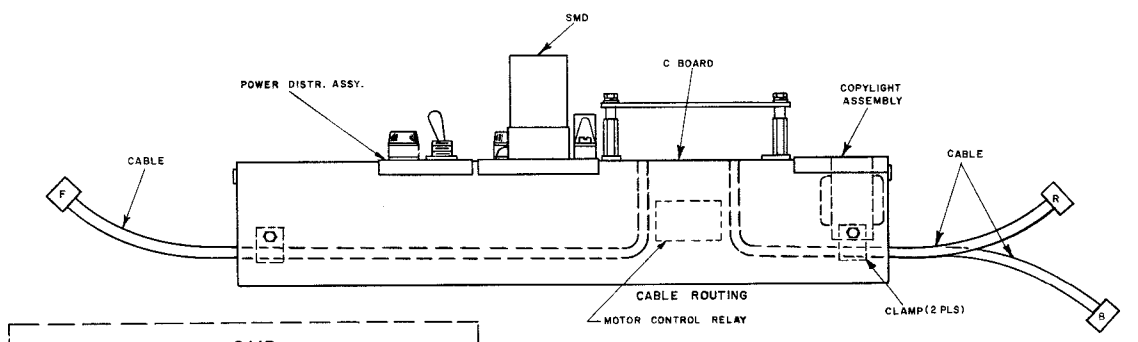
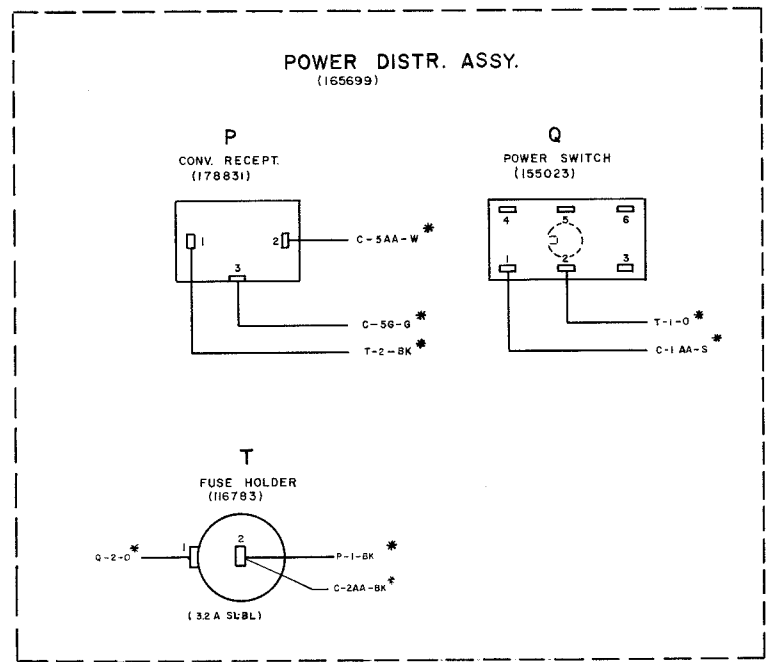
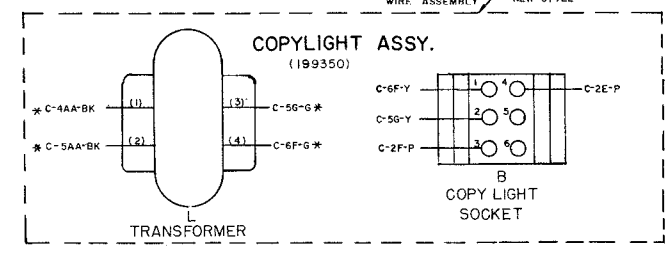


LEADS CONNECTED TO MAIN BOARD

TERMINAL DESIG.	TERMINATING POINT ON CONN.	COLOR
C-9B	R1	O
C-10R	R2	W-BR
C-3C	R4	W-G
C-4C	R5	W-P
C-ID	R29	W-O
C-2D	R34	BK-G
C-3D	R35	R-BL
C-4D	R36	R-Y
C-5D	R37	BK-R
C-6C	F5	S
C-7C	F6	P
C-5AA	F17	W*
C-7AA	F32	R*
C-4AA	F50	BL*

LEADS CONNECTED TO MAIN BOARD

TERMINAL DESIG.	TERMINATING POINT	COLOR
C-2AA	T2	BK*
C-1AA	Q1	S*
C-1AA	H4	R*
C-4AA	L1	BK*
C-4AA	H2	S*
C-5AA	L2	BK*
C-5AA	P2	W*
C-8D	H1	W
C-9D	H3	W-G
C-9D	B56	W-O
C-10D	B55	R
C-7B	B52	G
C-8B	B53	P
C-5G	L4	G
C-6F	L3	O
C-5G	P3	O*
C-4AA	SMD 4	R
C-5AA	SMD C	O
C-7B	SMD P	G
C-8B	SMD N	P
C-9B	SMD 5	BL
C-10B	SMD 2	BK
C-5G	GND	BK*



SEE NOTE 9  
SHEET 3 OF 4

RTTY ELECTRONICS  
TELETYPE=Sales-Service-Parts  
PO Box 20101 El Sobrante, Ca.  
94820. (510)222-3102  
mr\_rtty@pacbell.net

ACTUAL WIRING DIAGRAM LESU 304 (RO)

APPROVALS  
D ANJ B E OF M  
E NUMBER  
PROD. NO. 4934 WD  
DATE: 4-7-64  
P.D. FILE NO. G-A151AA  
DRAWN M.K. CHKD  
ENGD G.W. APPD  
TELETYPE CORPORATION  
4934 WD

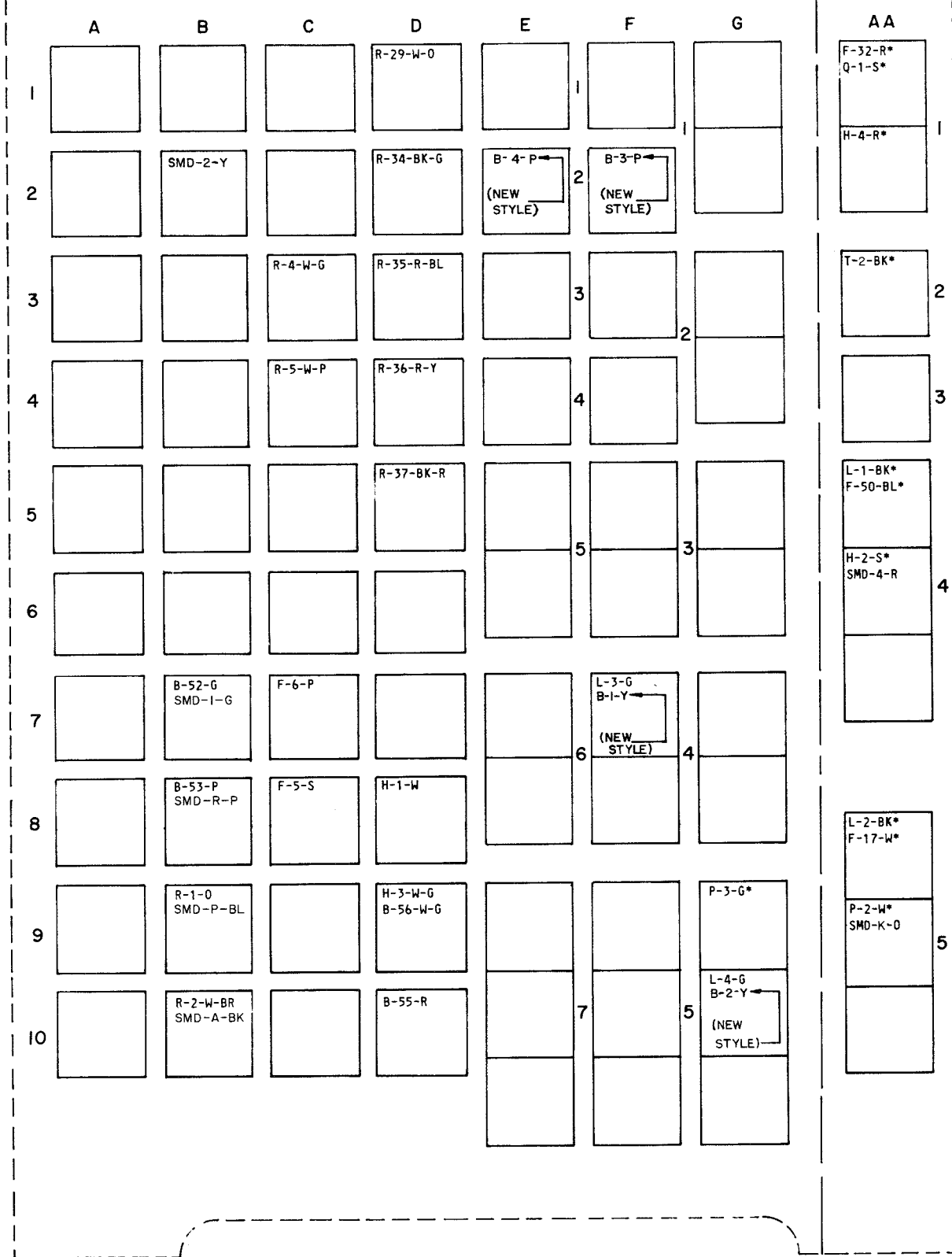
4934 WD

REVISIONS

ISSUE	DATE	AUTH. NO.
2	5-8-64	81602
3	6-18-64	82025
4	8-28-64	82906
5	10-27-64	84301

RTTY ELECTRONICS  
 TELETYPE=Sales-Service-Parts  
 PO Box 20101 El Sobrante, Ca.  
 94820. (510)222-3102  
 mr\_rtty@pacbell.net

C  
 MAIN WIRING FIELD



SEE NOTE 9, PAGE 3  
 SHEET 4 OF 4

ACTUAL  
 WIRING DIAGRAM  
 FOR  
 LESU304  
 (RO)

APPROVALS

D AND R	E OF M
---------	--------

E-NUMBER	
PROD. NO. 4934 WD	
DATE 4-7-64	
P.D. FILE NO. G-A151AA	
DRAWN R GK	CHKD.
ENGD. G EW	APPD.

TELETYPE  
 CORPORATION

4934 WD