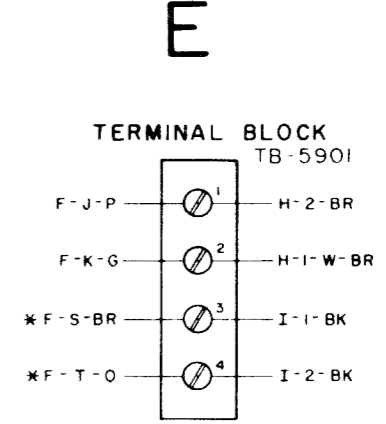
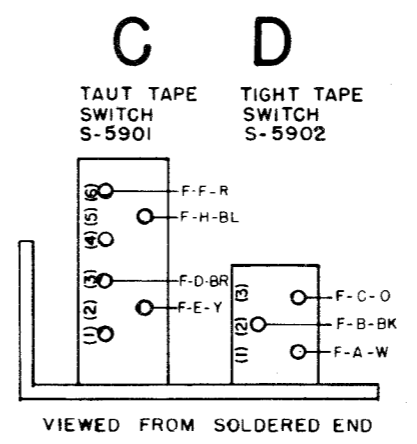
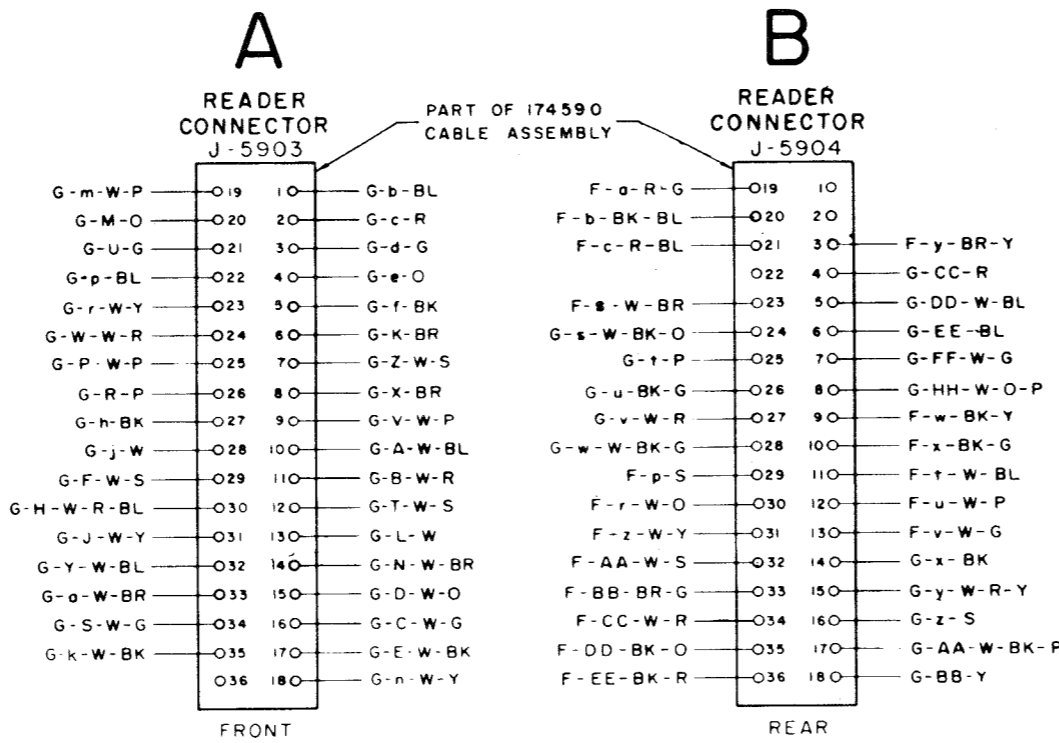


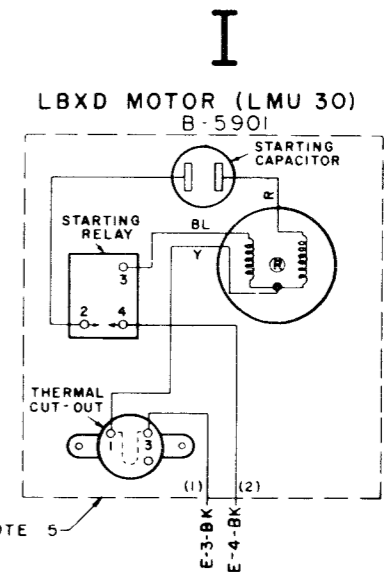
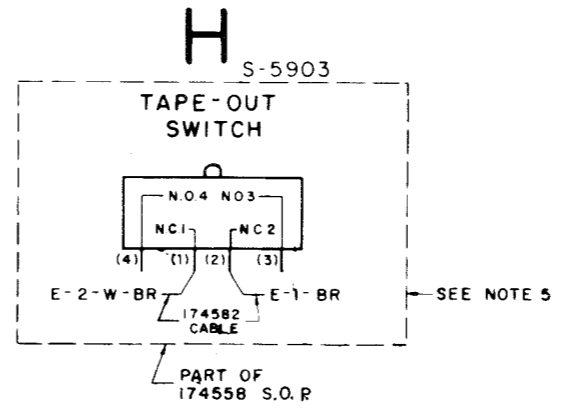
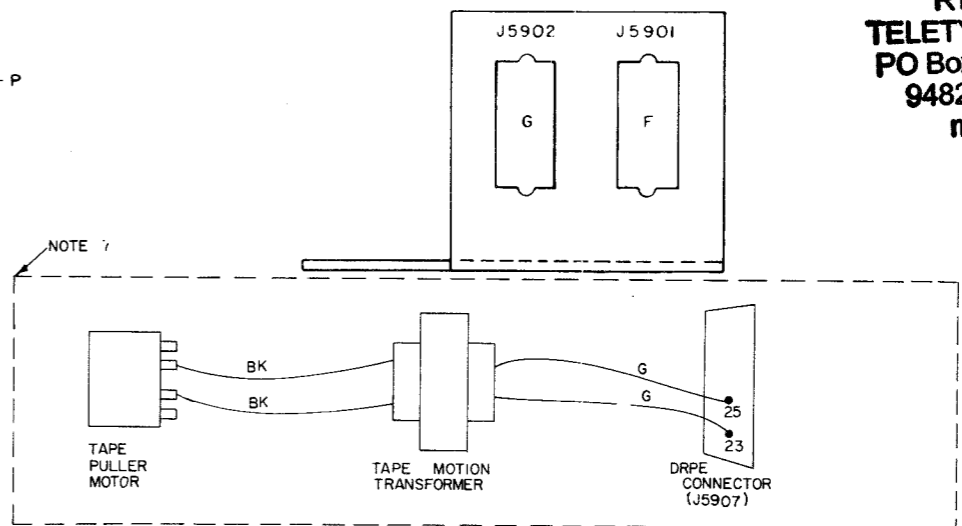
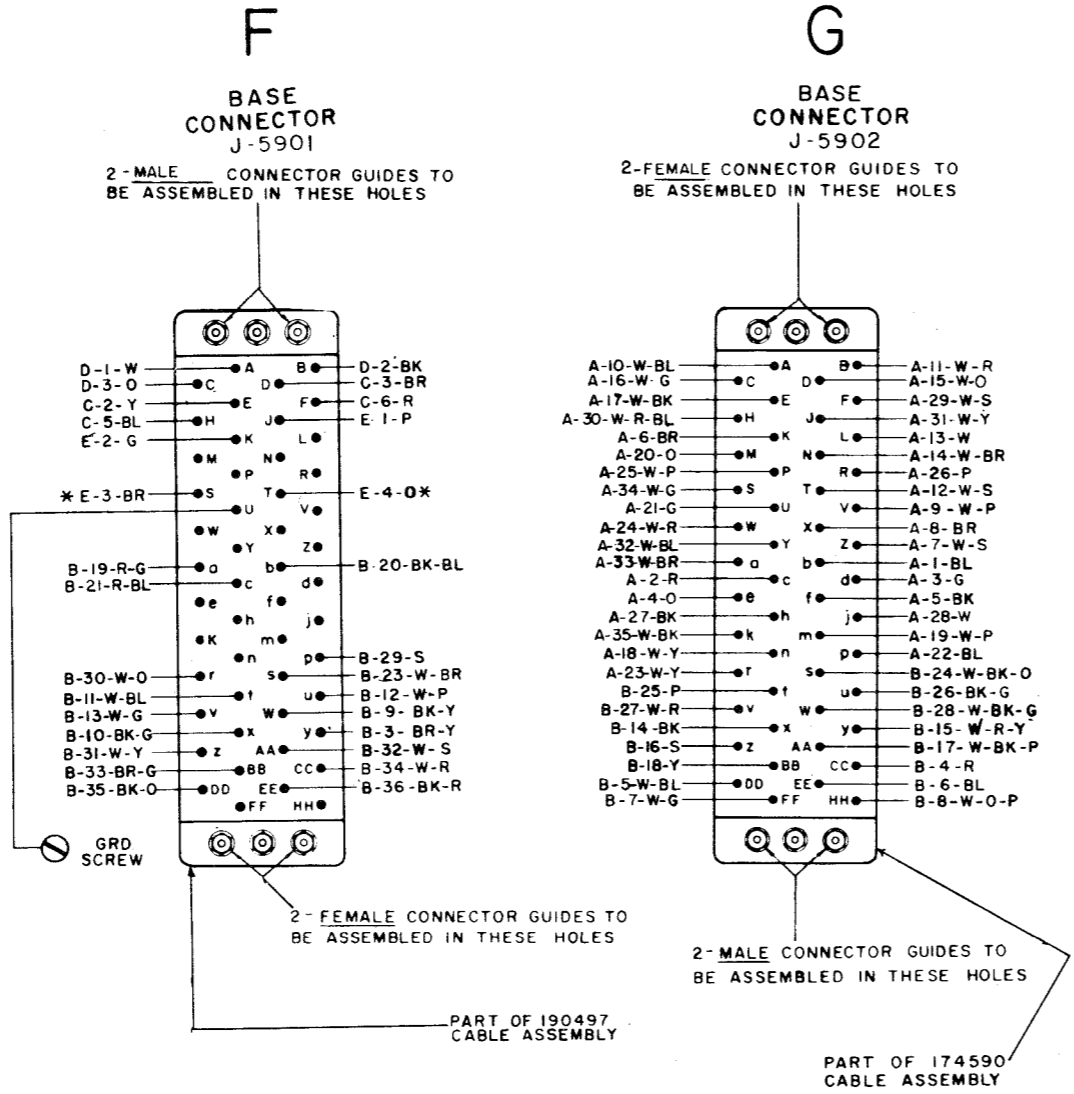
NO.	NOTES
1.	TERMINAL DESIGNATIONS ENCLOSED IN PARENTHESES ARE NOT MARKED ON COMPONENT.
2.	ALL CONNECTIONS VIEWED FROM SOLDERED TERMINAL END.
3.	* DENOTES 18 GA. WIRE. ALL OTHER WIRES 24 GA.
4.	ASSOCIATED CABLE ASSEMBLIES: 190497 AND 174590
5.	COMPONENTS ENCLOSED WITH DOTTED LINES ARE PART OF FINAL REPERFORATOR TRANSMITTER SET ASSEMBLY IF REQUIRED.
6.	FOR SCHEMATIC WIRING DIAGRAM, SEE 4634WD.
7.	CONNECTIONS MADE ONLY WHEN TAPE MOTION TRANSFORMER IS CALLED FOR ON ASSOCIATED VCL BILL OF MATERIAL. TRANSFORMER IS MOUNTED OVER FIBER INSULATING COVER ON RECTIFIER SWITCH UNIT ON DRPE FRAME.

4635 WD

REVISIONS		
ISSUE	DATE	AUTH. NO.
2	4-26-63	76590
3	2-1-65	85942
4	4-4-66	90302



**RTTY ELECTRONICS**  
TELETYPE=Sales-Service-Parts  
PO Box 20101 El Sobrante, Ca.  
94820. (510)222-3102  
mr\_rtty@pacbell.net



ACTUAL WIRING DIAGRAM FOR MODEL 28 REPERFORATOR TRANSMITTER BASE LRXB26 H/L CONVERTER

APPROVALS

D AND R	E OF M
<i>[Signature]</i>	<i>[Signature]</i>

E-NUMBER

PROD. NO. 4635WD

DATE 9-18-62

P.D. FILE NO.

DRAWN F.C.S. CHKD.

ENGD. L.D. APPD.

**TELETYPE CORPORATION**

4635 WD