

ISSUE CONTROL RECORD

2878 WD

NO. NOTES SUPPORTING INFORMATION CONTENTS

CATEGORY NO.

SHEET NO.

ISSUE

REVISIONS APPLYING TO THIS CONTROL RECORD

	2	3	4	5	6	7	8	9	10	11	12	13	14	15	16	17	18	19
1	X	X	X	X	X	X	X	X	X	X								
2	X	X	X	X	X	X	X	X	X	X								

ISSUE	DATE	AUTH. NO.
1	4-7-66	90222

ISSUE CONTROL SHEET 1 OF 1

ACTUAL WIRING DIAGRAM FOR MODEL 28 ELECTRICAL SERVICE UNIT LESU 7/134, 151

RTTY ELECTRONICS
TELETYPE=Sales-Service-Parts
PO Box 20101 El Sobrante, Ca.
94820. (510)222-3102
mr_rtty@pacbell.net

WD NUMBER 2878 WD

DRAWN DGS CHKD.
ENGD. RHK APPD.

TELETYPE CORPORATION

2878 WD

2878WD

REVISIONS		
ISSUE	DATE	AUTH. NO.
(A) 2	9-15-54	28-4872
3	1-26-55	28-4936
4	2-28-55	28-5008
5	3-4-55	28-5047
6	3-30-55	28-5192
7	5-8-57	28-7615
8	3-16-61	68761-4
9	12-7-61	71860
10	3-28-62	69768-10
11	4-7-66	90222

NOTE:
REVISION INFORMATION MUST ALSO
BE REFLECTED ON THE ISSUE
CONTROL RECORD, WHICH IS PART
OF THIS W.D.

RTTY ELECTRONICS
TELETYPE=Sales-Service-Parts
PO Box 20101 El Sobrante, Ca.
94820. (510)222-3102
mr_rtty@pacbell.net

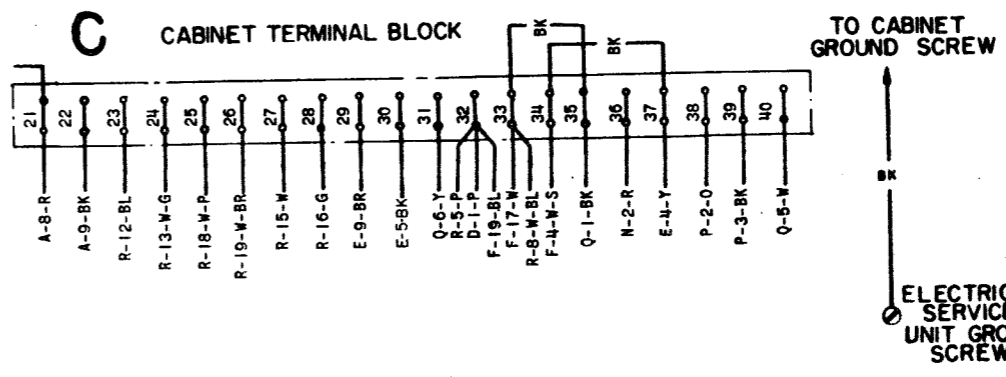
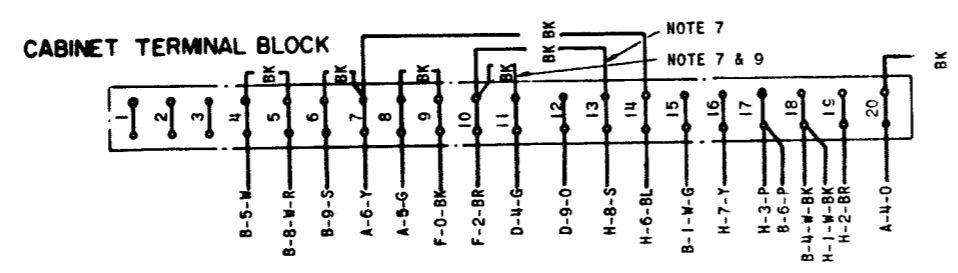
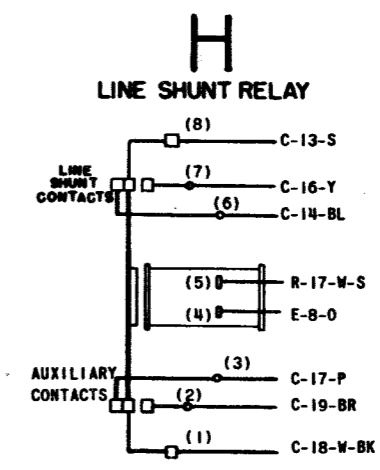
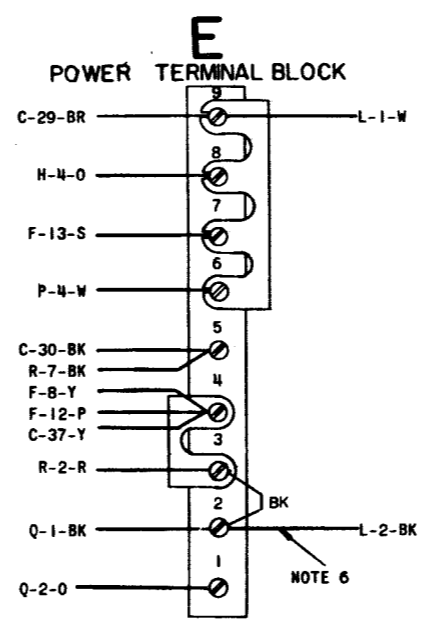
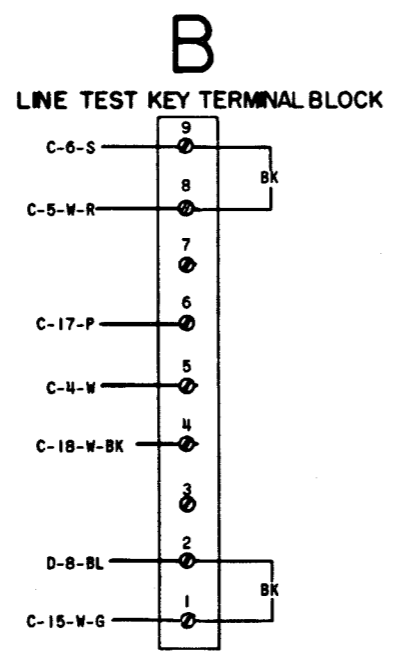
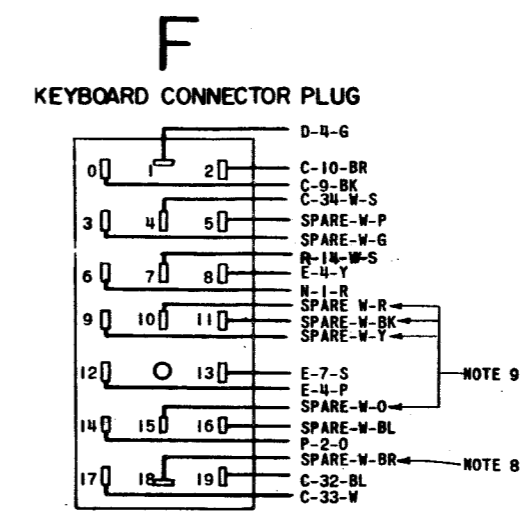
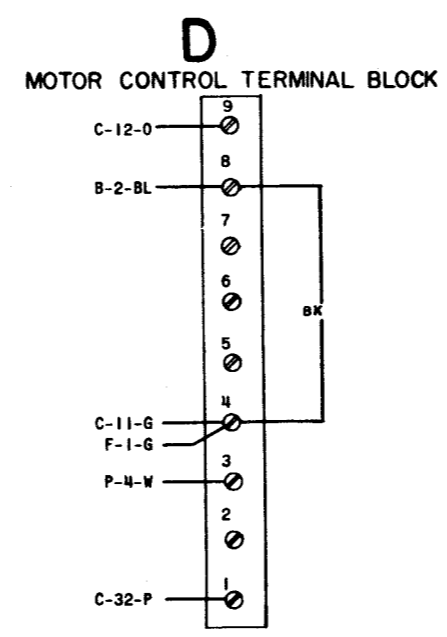
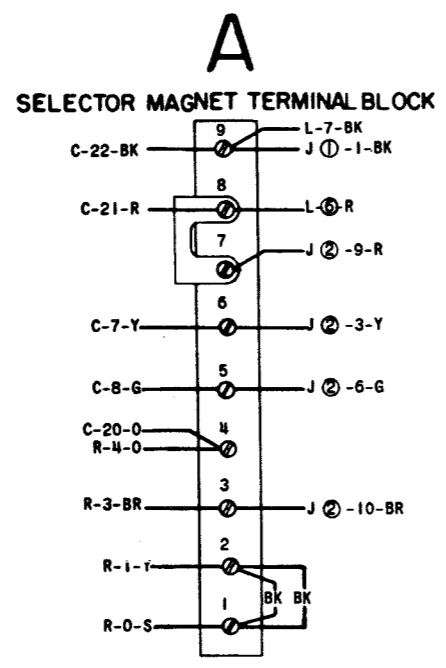
SEE ISSUE CONTROL RECORD FOR
COMPLETE LIST OF SHEETS
COMPRISING THIS W.D.
SHEET 1

ACTUAL WIRING DIAGRAM FOR MODEL 28 ELECTRICAL SERVICE UNIT LESU7/134, 151	
APPROVALS	
D AND R	E OF M
E-NUMBER	
PROD. NO. 2878WD	
DATE 2-20-54	
P.D. FILE NO. 2-30.65.156A	
DRAWN H.K.G.	CHKD.
ENSD. R.H.K.	APPD.
TELETYPE CORPORATION	
2878WD	

- NO. NOTES
1. WIRING LEGEND:
 2. COLOR CODE:

BK-BLACK	BR-BROWN
R-RED	O-ORANGE
Y-YELLOW	G-GREEN
BL-BLUE	P-PURPLE
W-WHITE	S-SLATE
 3. UNIT WIRED FOR 115 VOLTS, 50 TO 60 CYCLE - AC POWER INPUT ONLY.
 4. PLUGS VIEWED FROM SOLDERED TERMINAL ENDS.
 5. CIRCUITS SHOWN FOR .060 AMP. NEUTRAL SIGNAL LINE OPERATION. FOR .020 AMP. OPERATION REMOVE AND ADD CONNECTIONS AS TABULATED BELOW:

SIGNAL LINE CURRENT	CONNECTION REMOVED	CONNECTIONS ADDED
.020 AMP.	J ①-1	J ①-3 J ①-4
 6. RECTIFIER SHOWN CONTROLLED BY POWER SWITCH. FOR CONTINUOUS OPERATION, REMOVE LEAD L-2-BK FROM TERMINAL E-2 AND CONNECT TO TERMINAL E-1.
 7. LINE SHUNT RELAY SHOWN CONTROLLED BY POWER SWITCH.
 A. FOR KEYBOARD OPERATION TERMINAL 13 MAY BE CONNECTED TO EITHER TERMINAL C-9, C-10, C-11 OR C15 TO OBTAIN DESIRED SHUNTING OF THE SIGNAL LINE CIRCUIT.
 B. FOR RECEIVING ONLY BASES CONNECT C-10 TO C-11.
 8. THE SPARE LEADS FROM THE KEYBOARD AND TYPING UNIT CONNECTOR PLUGS ARE TERMINATED IN THE RIGHT AND LEFT ENDS OF THE ELECTRICAL SERVICE UNIT RESPECTIVELY.
 9. FOR ACCESSORY GROUP 134 SPLICE AND TAPE SPARE LEADS AS FOLLOWS: F-9-W-Y TO R-6-W-Y, F-10-W-R TO R-9-W-R, F-11-W-BK TO R-11-W-BK, AND F-15-W-O TO R-10-W-O CONNECT C-10 TO C-11.
 10. FOR SCHEMATIC WIRING DIAGRAM SEE 2879WD.

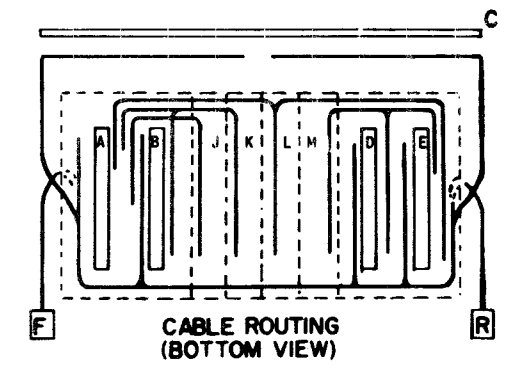
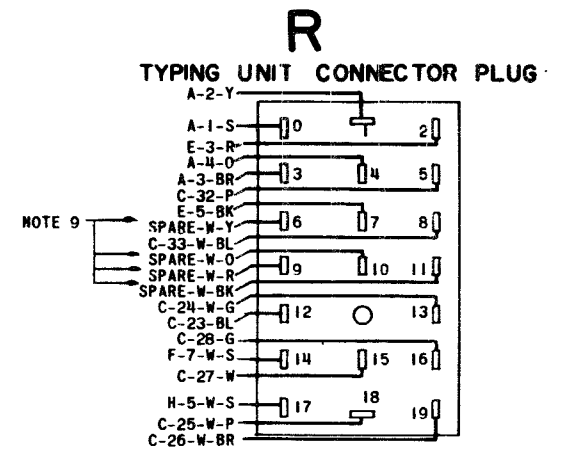
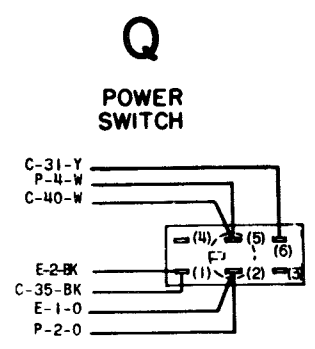
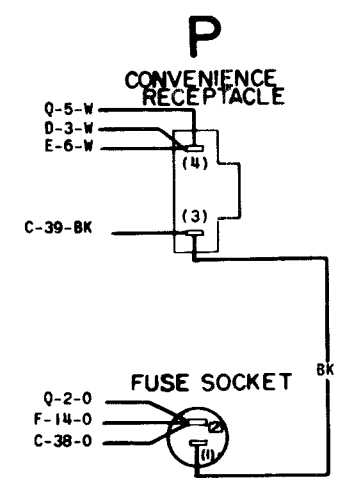
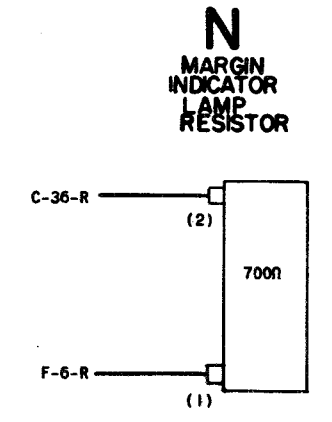
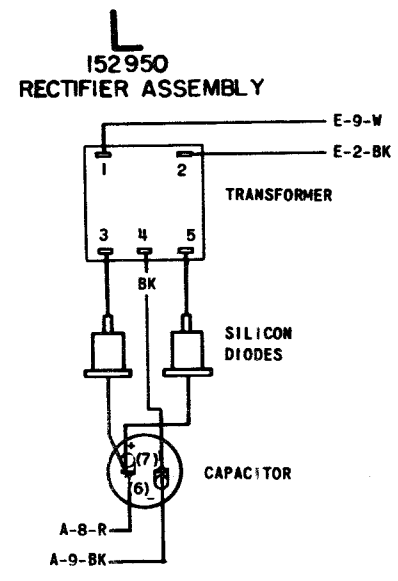
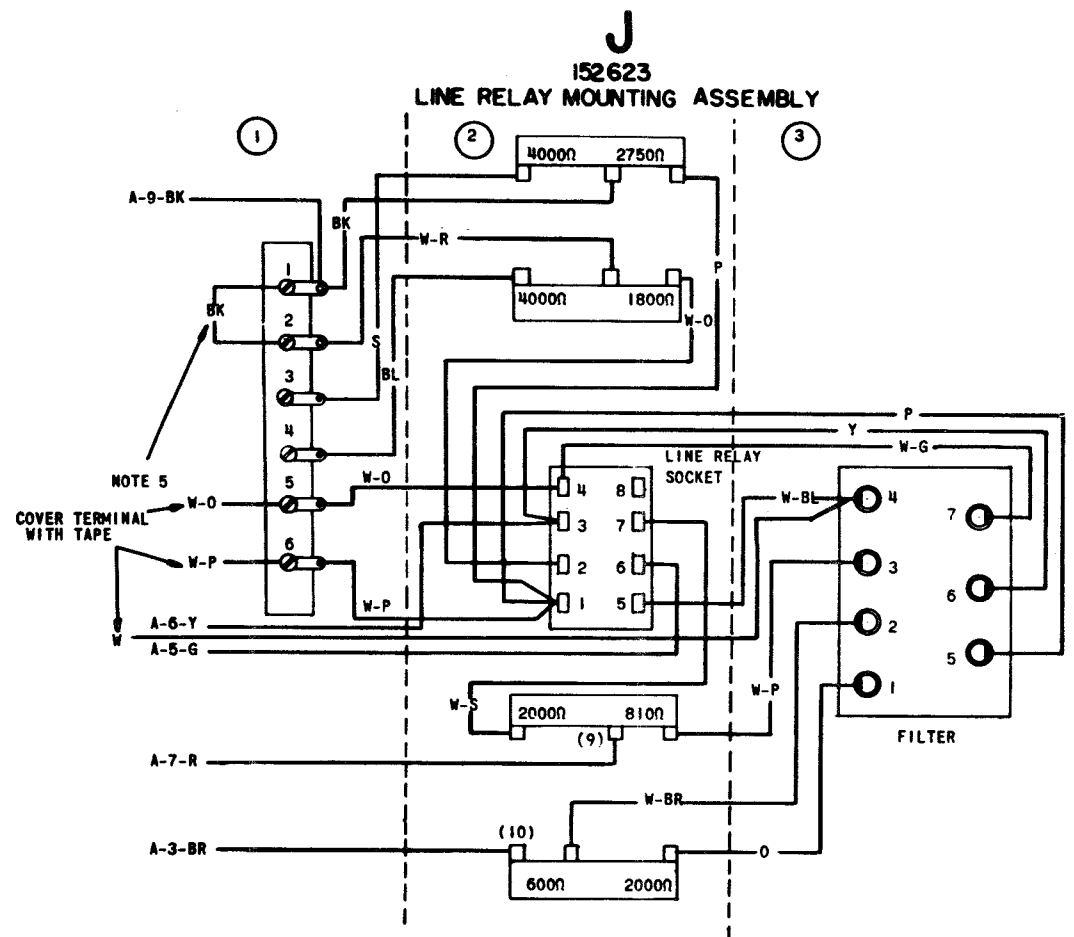


SEE SHEET 1 FOR NOTES

NOTE:
REVISION INFORMATION MUST
BE REFLECTED ON THE ISSUE
CONTROL RECORD, WHICH IS PART
OF THIS W.D.

2878WD

REVISIONS		
ISSUE	DATE	AUTH. NO.
(A) 2	9-15-54	28-4472
3	1-26-55	28-4826
4	2-28-55	28-5006
5	3-4-55	28-5047
55	3-30-55	28-5192
77	5-8-57	28-7615
8	3-16-61	68761-4
9	12-7-61	71860
10	3-28-62	69768-10
11	4-7-66	90222



SEE ISSUE CONTROL RECORD FOR
COMPLETE LIST OF SHEETS
COMPRISING THIS W.D.

SHEET 2

ACTUAL
WIRING DIAGRAM
FOR
MODEL 28
ELECTRICAL
SERVICE UNIT
LESU7/134, 151

APPROVALS

D AND R	E OF M
<i>H.K.G.</i>	<i>[Signature]</i>

E-NUMBER

PROD. NO. 2878WD

DATE 2/20/64

P.D. FILE NO. 2-30.65.156A

DRAWN H.K.G.	CHKD.
ENGD. R.H.K.	APPD.

TELETYPE
CORPORATION

2878WD