

INSTRUCTIONS FOR INSTALLING THE 112119 SET OF PARTS TO
PROVIDE SINGLE STEP TAPE FEED SUPPRESSION FEATURE ON
RECEIVING TRANSMITTER DISTRIBUTORS XD95, XD219**
(Bell System 14AA, AB, AD, ABM)

1. GENERAL

a. The 112119 set of parts is used to equip receiving transmitter distributors XD95 and XD219** with a tape feed suppression mechanism. This mechanism provides a means of suppressing the stepping action of the tape feed mechanism one step each time a lever extending from the side of the snap panel is manually depressed.

b. The double asterisk (**) designates a two letter suffix which indicates the paint finish. The following finishes are now available:

AA - Black Wrinkle	AD - Dark Brown Wrinkle
AB - Gray Green Wrinkle	CA - Walnut
AC - Light Brown Wrinkle	

c. Transmitter distributor XD95 when equipped with 112119 set of parts is similar to XD228CA.

d. The 112119 set of parts consists of:

1	504EE	Correction Sheet	1	74709	Spring
1	5500S	Specification	2	104537	Spring, Clip
3	1159	Screw 4-40 x 3/8	1	111377	Detent
3	2191	Lock Washer	1	112462	Restoring Blade
1	3606	Nut 6-40 hex.	1	112463	Tape Feed Pawl Stud
1	3599	Nut 4-40 hex.	1	112464	Tape Feed Lever Extension
3	3640	Lock Washer	1	112465	Lever Assembly
2	6746	Screw 6-40 x 5/16	6	112474	Shim
2	46183	Washer			

*e. For part numbers referred to in the following text and for parts ordering information see Teletype Transmitter Distributor Parts Bulletin and associated correction sheets.

2. INSTALLATION

a. Removal of Parts

(1) Inasmuch as all mounting screws involved in the following removals will be used in completing the re-assembly of the unit, they should be carefully identified.

(2) Remove the distributor cover, the snap panel, the transmitter cover, the transmitter top plate assembly, the 102970 base plate assembly and the 125860 right end bracket.

b. INSTALLATION OF PARTS

(1) Install the 112462 restoring blade using two 1159 screws, two 3640 lock washers, one 46183 washer, and one 104537 spring clip as follows:

(a) The 1163 screws and the 3640 lock washers which secure the 77146 wearing strip to the tape contact lever bail must be removed and discarded. However, remove the screw and lock washer from the back end only. Then, place the 112462 restoring blade over the right-hand face of the contact lever bail so that the end of the blade furthest from an elongated mounting hole is toward the front of the unit (see Figures 1 and 2). Using one 1159 screw, one 3640 lock washer and one 46183 washer, mentioned above, secure the rear end of the blade to the bail so that it is friction tight. Now, remove the other 1163 screw and 3640 lock washer and rotate the restoring blade upward until the front end can also be secured. Use one 1159 screw, one 104537 spring clip and one 3640 lock washer as shown in Figure 2.

*(2) Remove and discard the 112622 screw which mounts the 125858 feed pawl and the 112636 spring. Remount the 112636 spring in the same related position using the 112463 tape feed pawl stud furnished with the set of parts. Hold the numbers 1 and 2 tape sensing pins down out of the way and place the 112464 tape feed lever extension over the stud so that the post of the feed lever extension will extend below the lower edge of the tape feed lever. Lock in place with a 2191 lock washer and 3606 nut being certain that the post of the feed lever extension contacts the lower edge of the tape feed lever (Figure 3).

(3) The two holes, already in the base casting, between the 125860 bracket mounting holes and slightly to the left of a line through the bracket mounting holes (Figure 4), should be used to mount the 112465 lever assembly. Two 6746 screws and two 2191 lock washers, also furnished with the set of parts, are provided for this purpose. The 112465 lever assembly should be positioned so that the trip-off lever extension is toward the right side of the unit.

(4) Modify the snap panel by adding the notch in the right side as shown in Figure 6, or order the 112673** snap panel which is provided with the notch.

(5) Assemble the remaining 104537 spring clip to the 125860 right bracket (now removed from unit) using the 1159 screw, 46183 washer, 3640 lock washer and 3599 nut, as shown in Figure 7.

c. REPLACEMENT OF PARTS

(1) Replace the following parts after the adjustments and lubrication in paragraph 3 are completed:

(a) The 125860 right bracket

NOTE:

Install the 74709 spring, furnished with the 112119 set of parts, between the spring clip on the bail and spring clip on the 125860 bracket.

(b) The 102970 base plate assembly, the transmitter tape plate assembly.

NOTE: Install the 111377 detent, furnished, in place of the 125868 detent lever.

(c) The transmitter cover, the distributor cover, the worked over snap panel.

NOTE: The snap panel must be first pushed back and then down to clear the trip-off lever extension.

*3. ADJUSTMENTS AND LUBRICATION

a. For standard adjustments and lubrication refer to the Teletype Transmitter Distributor Adjustment Bulletin and applicable correction sheets and remake the following adjustments contained in correction sheet 504EE supplied with the set of parts.

- (1) TAPE FEED LEVER LATCH
- (2) TRIP-OFF LATCH ECCENTRIC
- (3) RESTORING LEVER ECCENTRIC
- (4) RESTORING LEVER PLATE
- (5) TRIP-OFF LEVER SPRING TENSION
- (6) NON-REPEAT LEVER SPRING TENSION
- (7) TAPE FEED LATCH SPRING TENSION
- (8) RESTORING LEVER SPRING TENSION
- (9) TRIP OFF LATCH SPRING TENSION
- (10) RESTORING BAIL SPRING TENSION

* * *

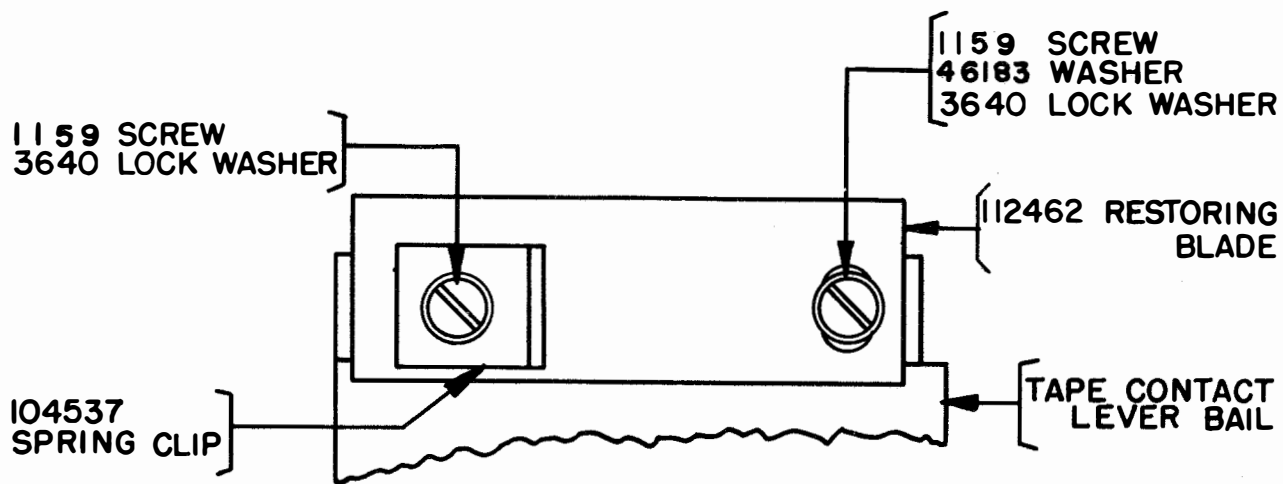


FIGURE 1

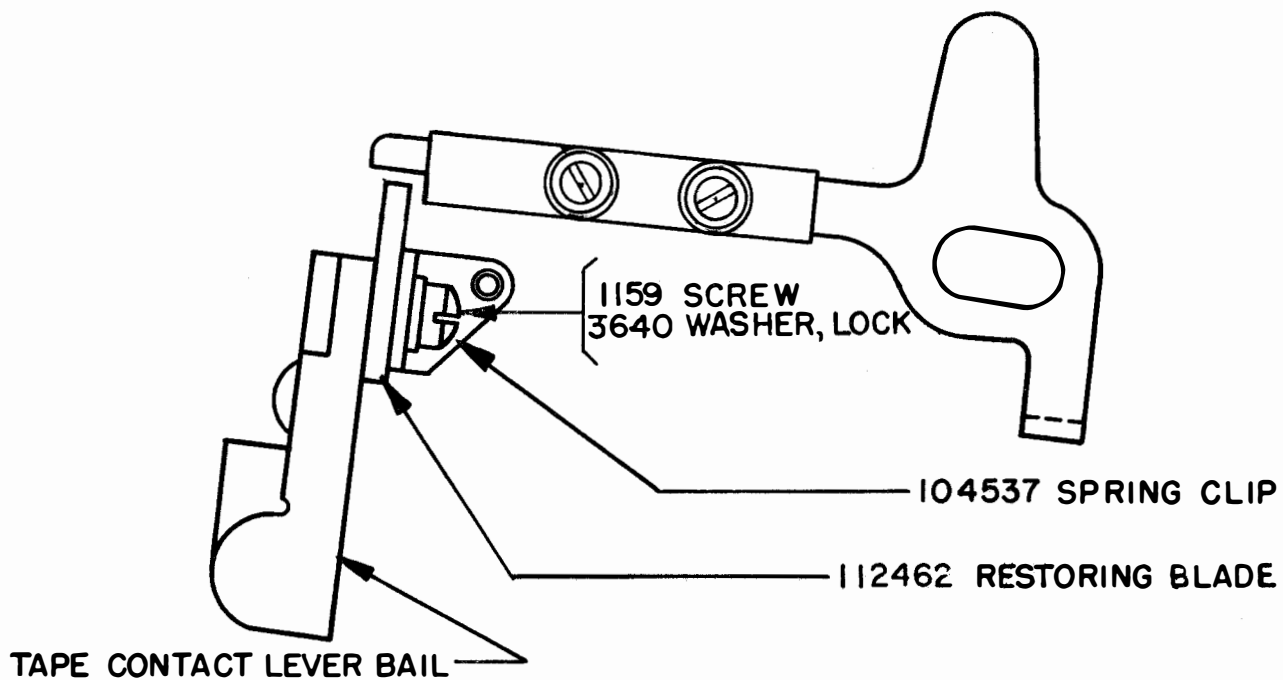


FIGURE 2

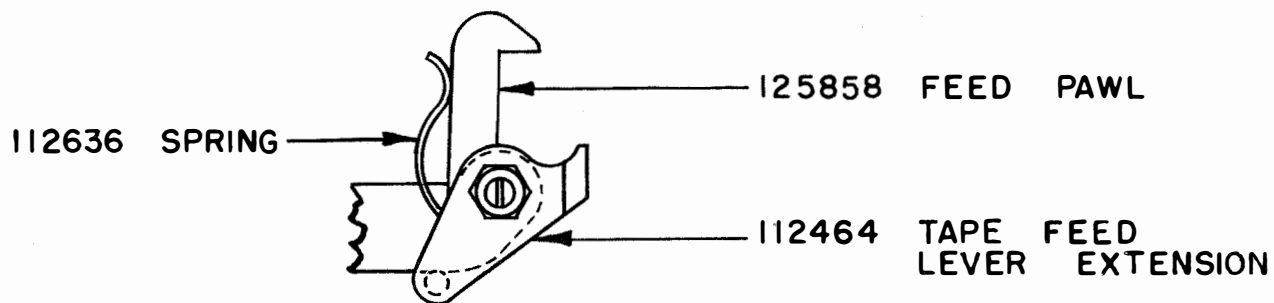


FIGURE 3

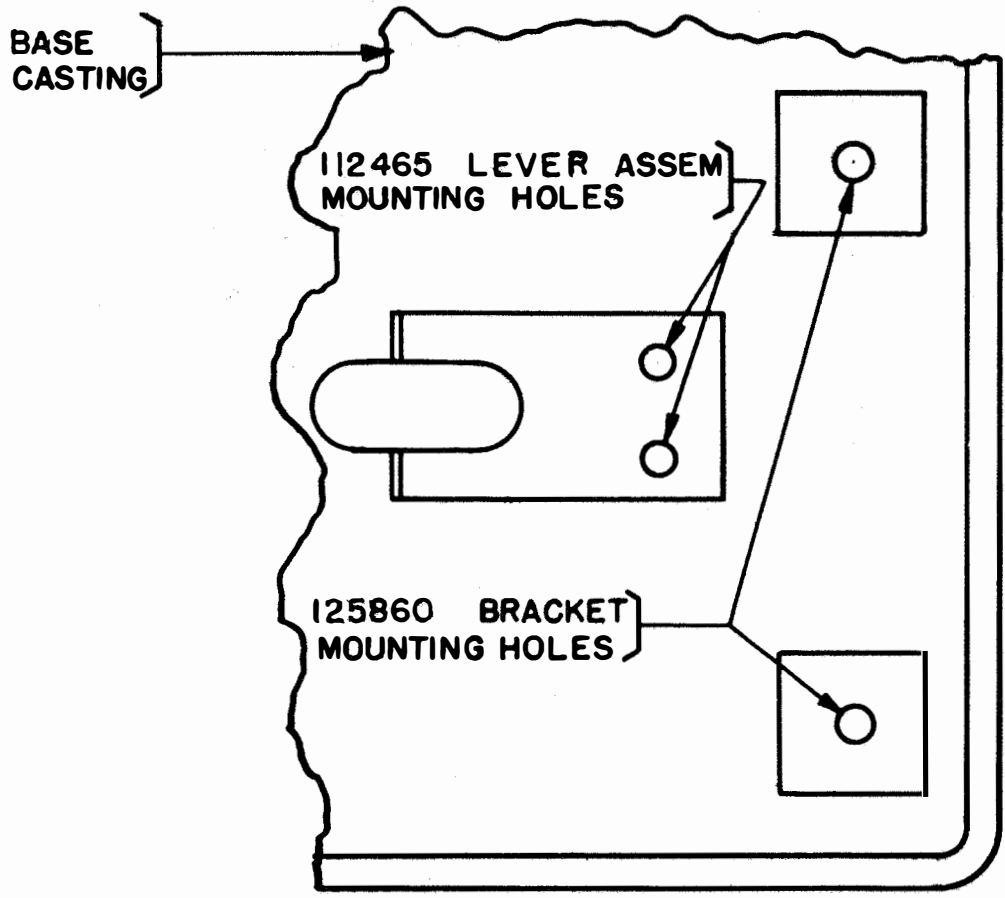


FIGURE 4

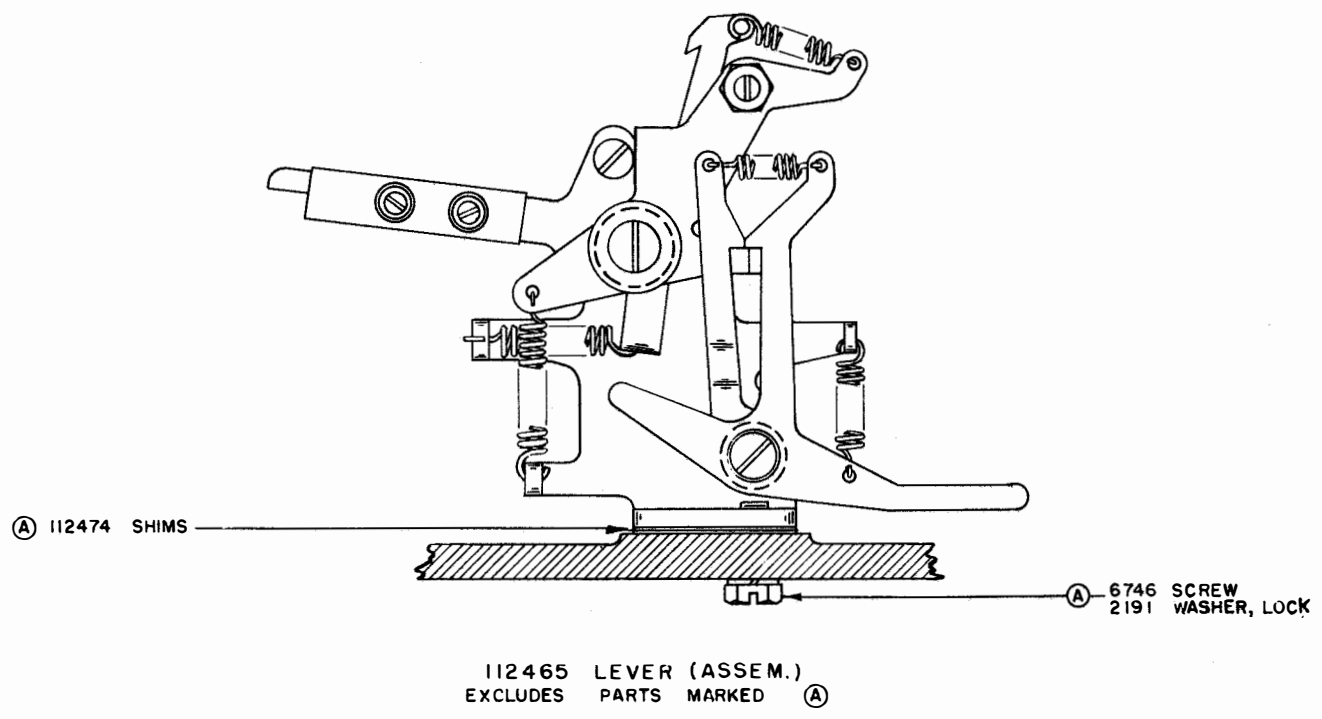
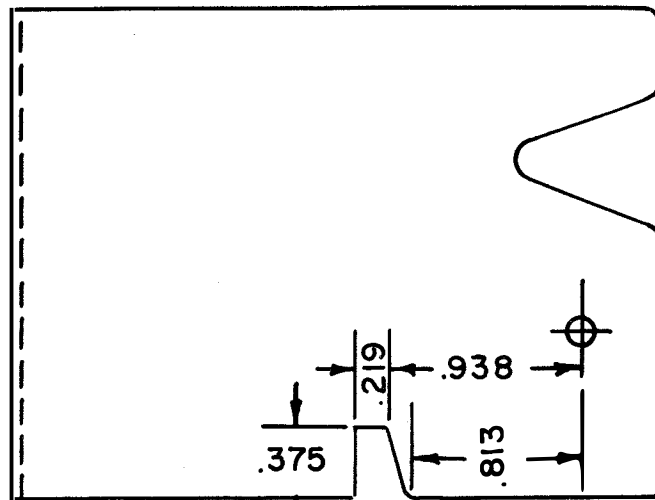


FIGURE 5



TRANSMITTER SNAP PANEL
RIGHT SIDE VIEW

FIGURE 6

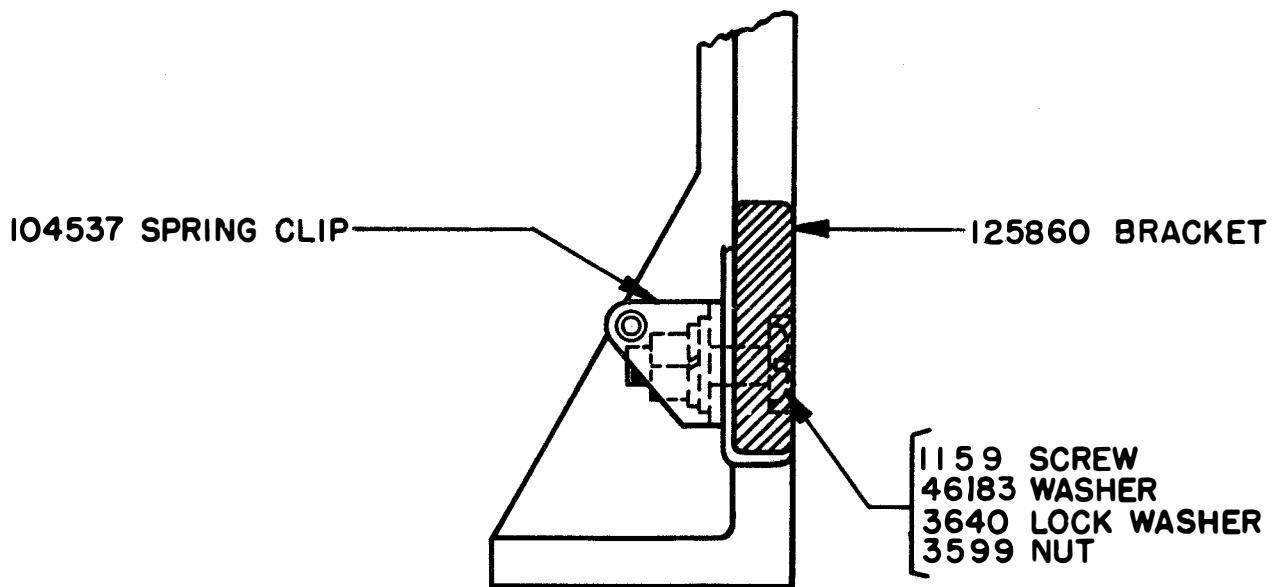
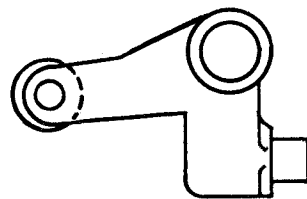


FIGURE 7



111377 DETENT

FIGURE 8