

INSTRUCTIONS FOR INSTALLING 407800 METER ROLLER SET  
ON A MODEL 40 80- OR 132-COLUMN TRACTOR FEED PRINTER

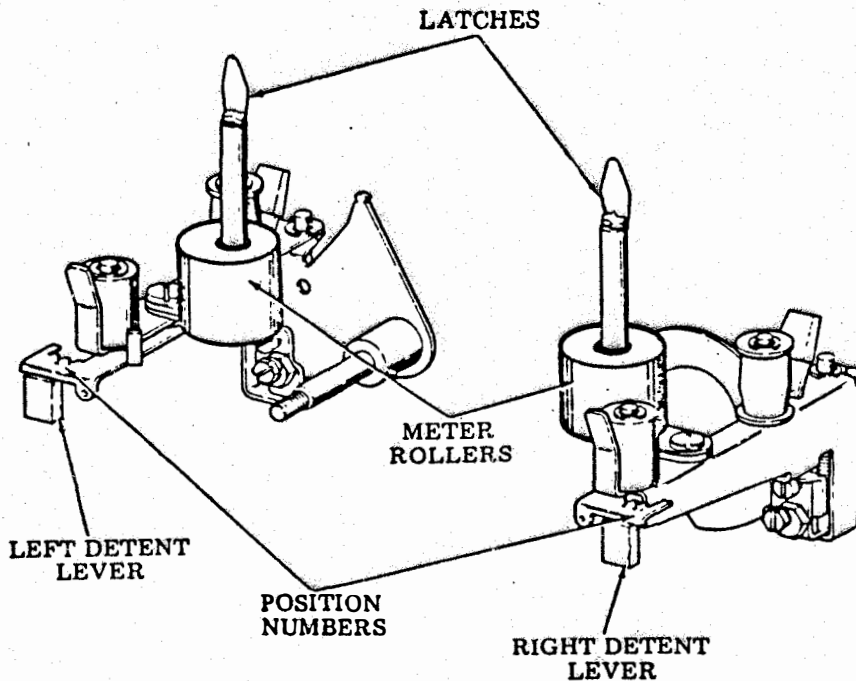
1. GENERAL

1.01 The 407800 meter roller set consists of the following parts:

<u>Qty</u>	<u>Description</u>
2	Ink Meter Roller
1	Disposable Glove

2. INSTALLATION

2.01 Place the right and left detent lever in the number "1" position. Using disposable glove, install one meter roller on the right and one on the left bushing with latch.



RTTY ELECTRONICS  
TELETYPE=Sales-Service-Parts  
PO Box 20101 El Sobrante, Ca.  
94820. (510)222-3102  
mr\_rtty@pacbell.net