

BELL SYSTEM PRACTICES
Teletypewriter Stations

SECTION P33.004
Issue 3, September, 1952
AT&T Co Standard

WIRING DIAGRAM

SOTUS

(Sequentially Operated Teletypewriter Universal Selector)

1. GENERAL

- 1.01 This section covers the wiring of the SOTUS including the sequential selector, selector panel and motor unit.
- 1.02 This section is revised to show the latest wiring of the 1-A and 1-B SOTUS units and to add the wiring of the BS6L unit.
- 1.03 Table of contents:
 - Fig. 1—Wiring of BSP2 Selector Panel & MU38 Motor Unit (1-A Sotus Base) A-C Syn.—Motor**
 - Fig. 2—Wiring of BSP2 Selector Panel & MU41 Motor Unit (1-B Sotus Base) D-C Shunt—Motor**
 - Fig. 3—Wiring of BSP2 Selector Panel & MU39 Motor Unit (1-C Sotus Base) A-C Series**
 - Fig. 4—Wiring of BS3C Sequential Selector (1-A and 1-B Sotus Units)**
 - Fig. 5—Wiring of BS6L Sequential Selector Unit**

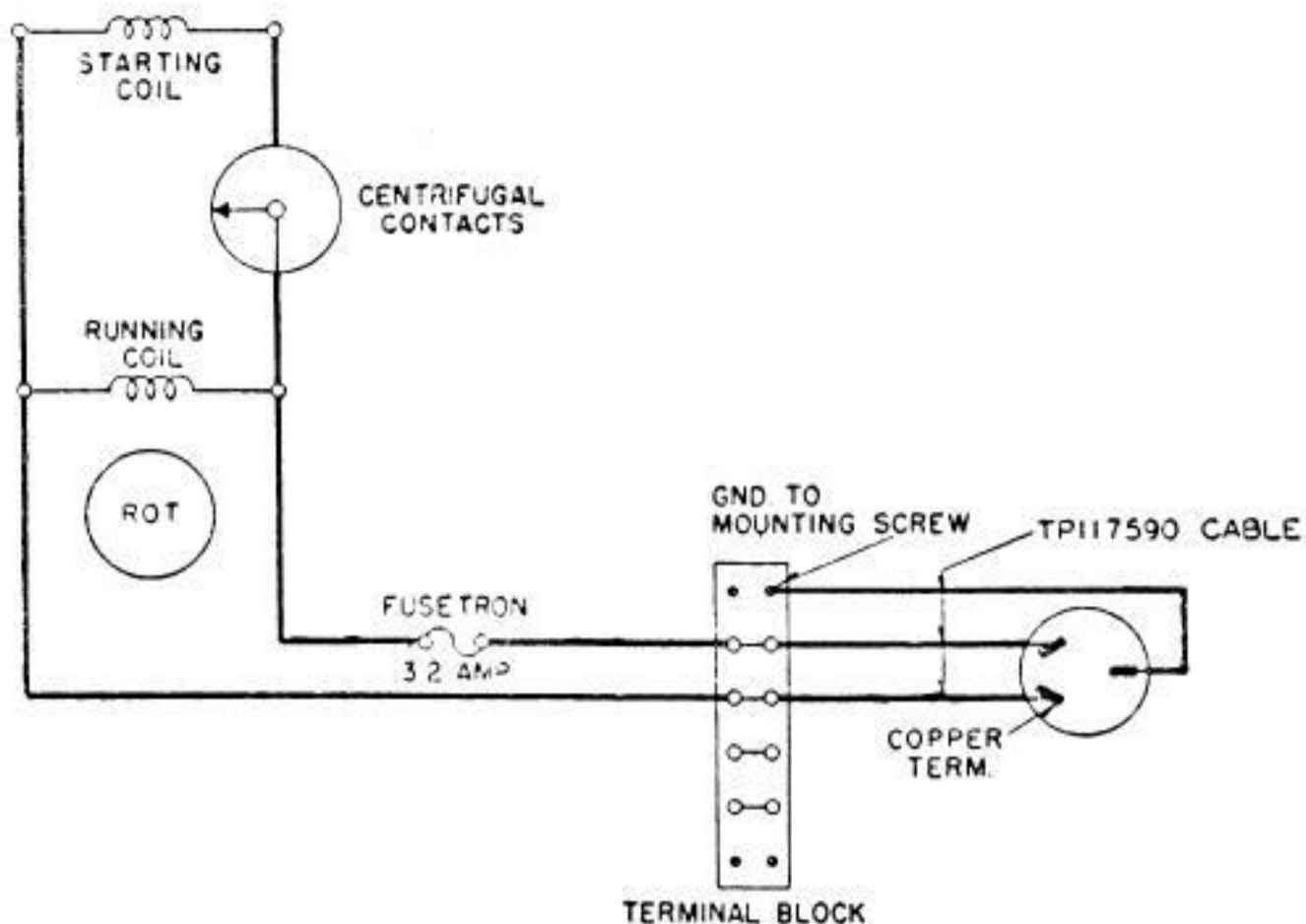


Fig. 1—Wiring of BSP2 Selector Panel & MU38 Motor Unit (1-A Sotus Base) A-C Syn.—Motor

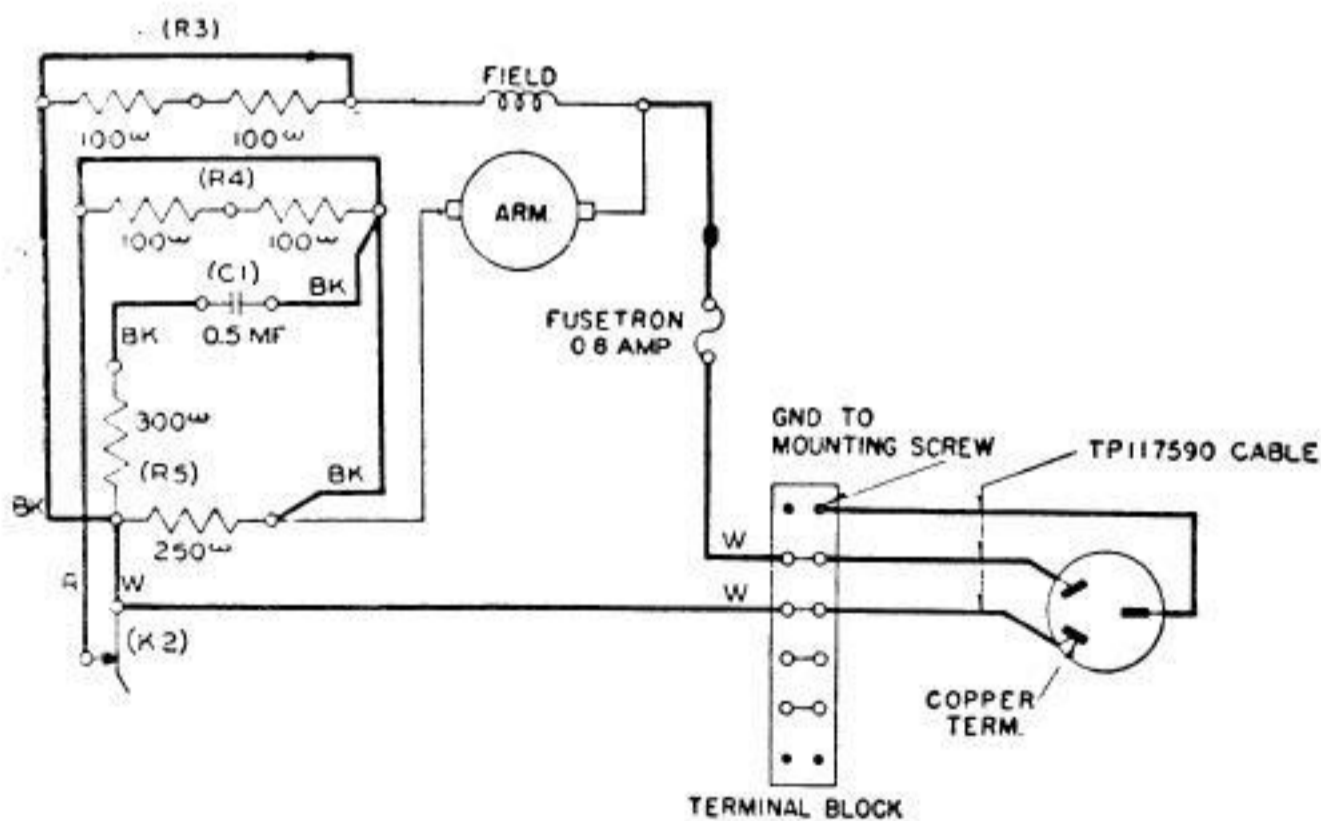
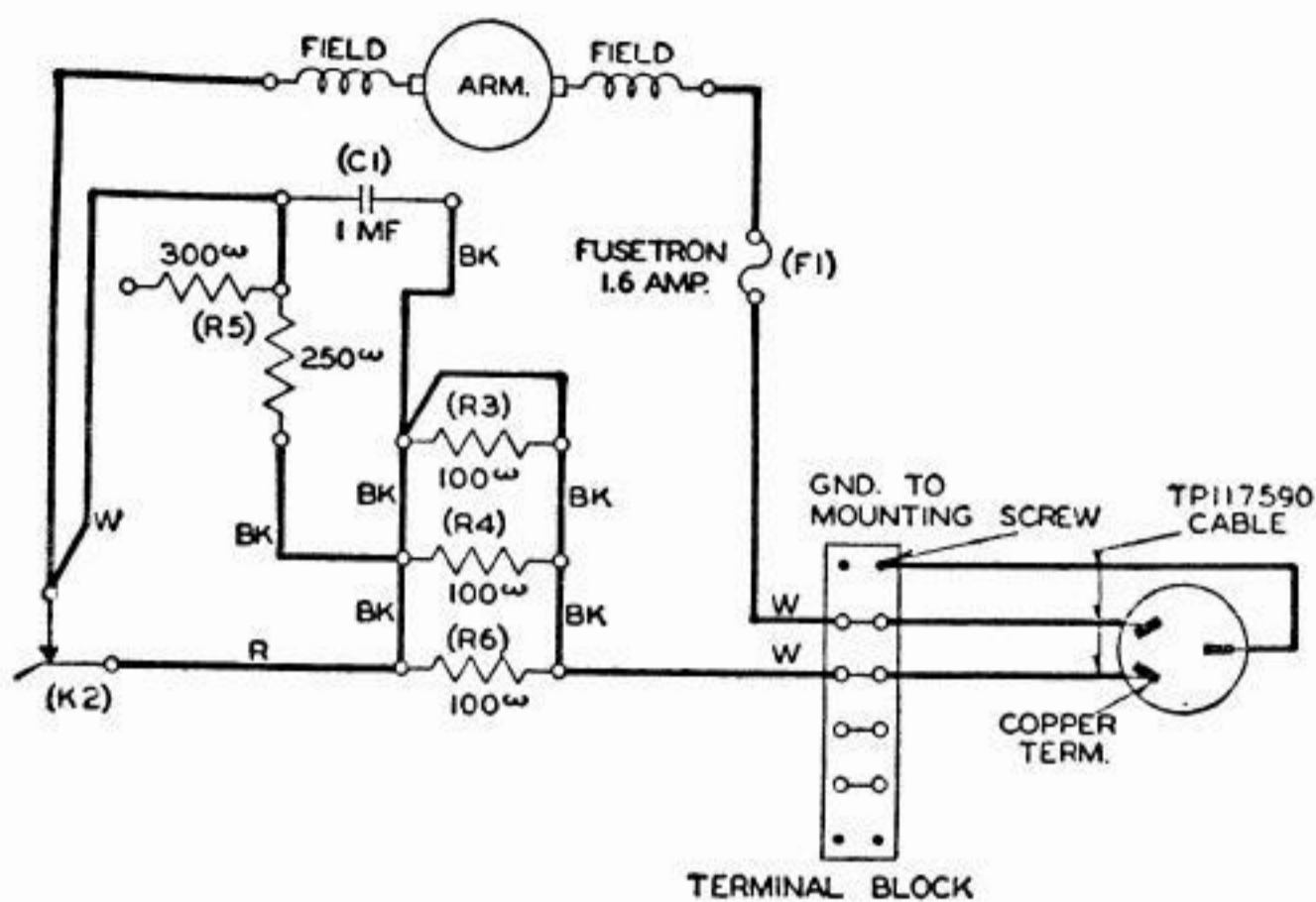


Fig. 2—Wiring of BSP2 Selector Panel & MU41 Motor Unit (1-B Sotus Base) D-C Shunt—Motor



**Fig. 3—Wiring of BSP2 Selector Panel & MU39 Motor Unit
(1-C Sotus Base) A-C Series**

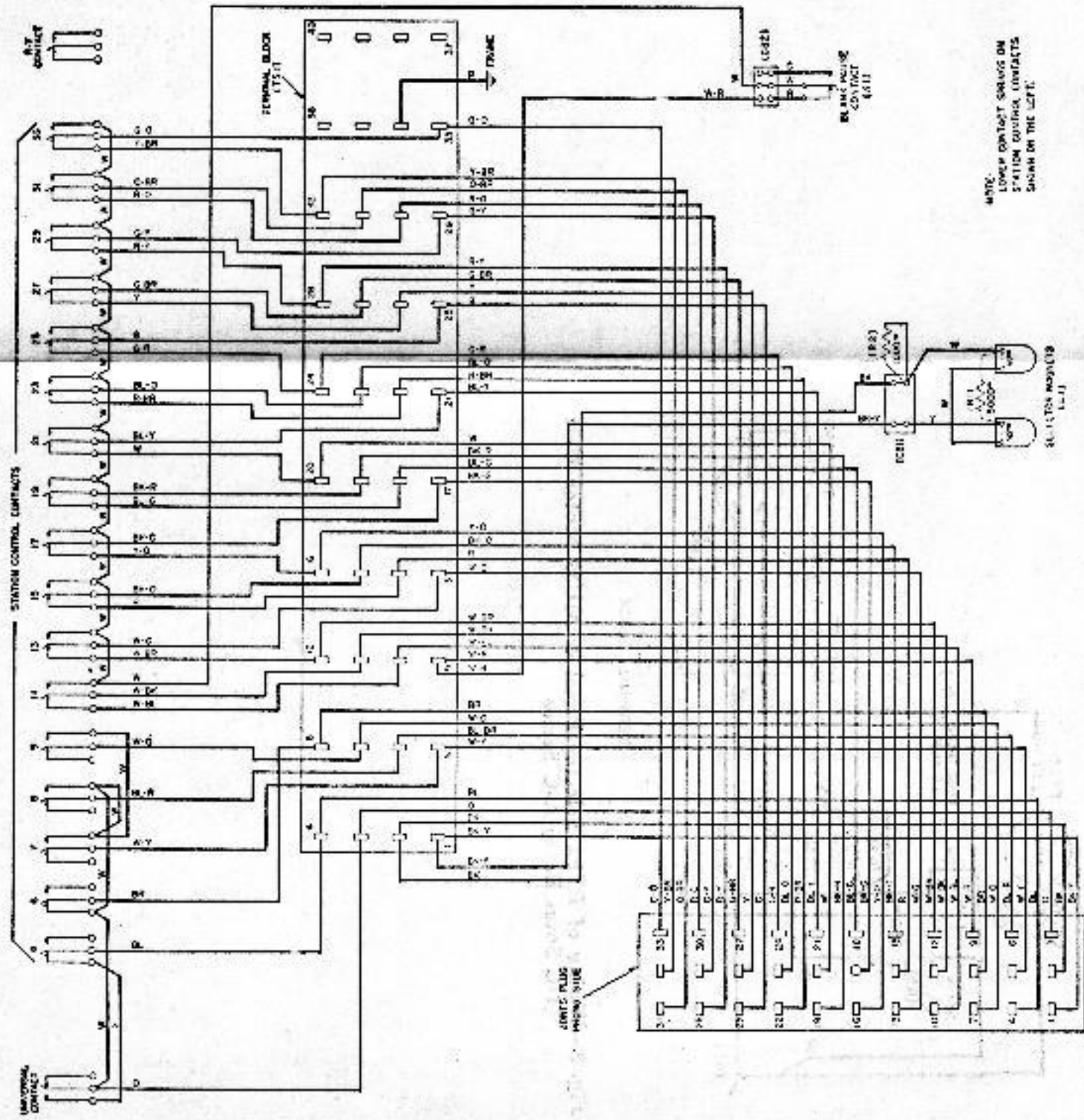


Fig. 4—Wiring of BS3C Sequential Selector (1-A and 1-B Sotus Units)

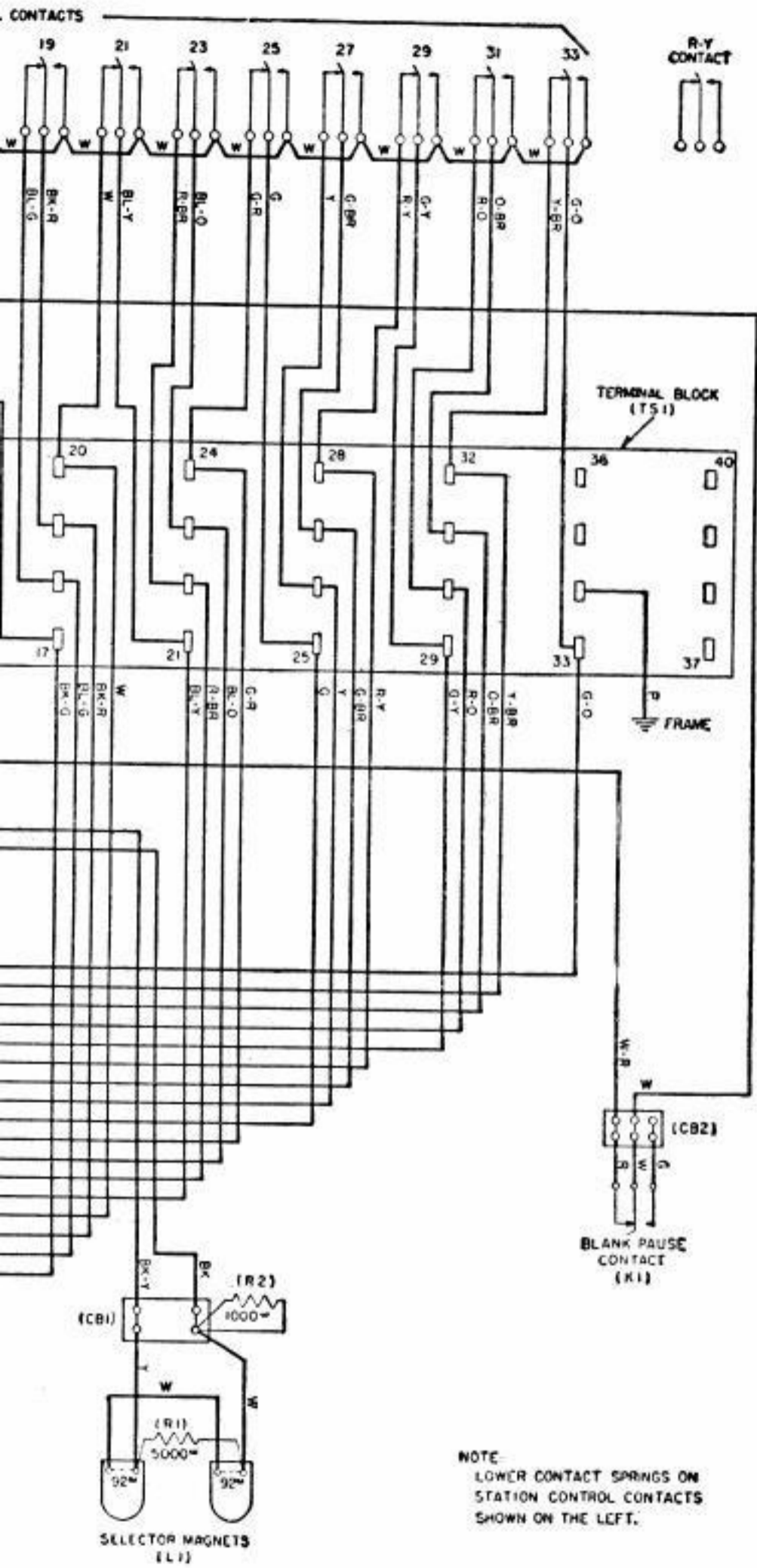
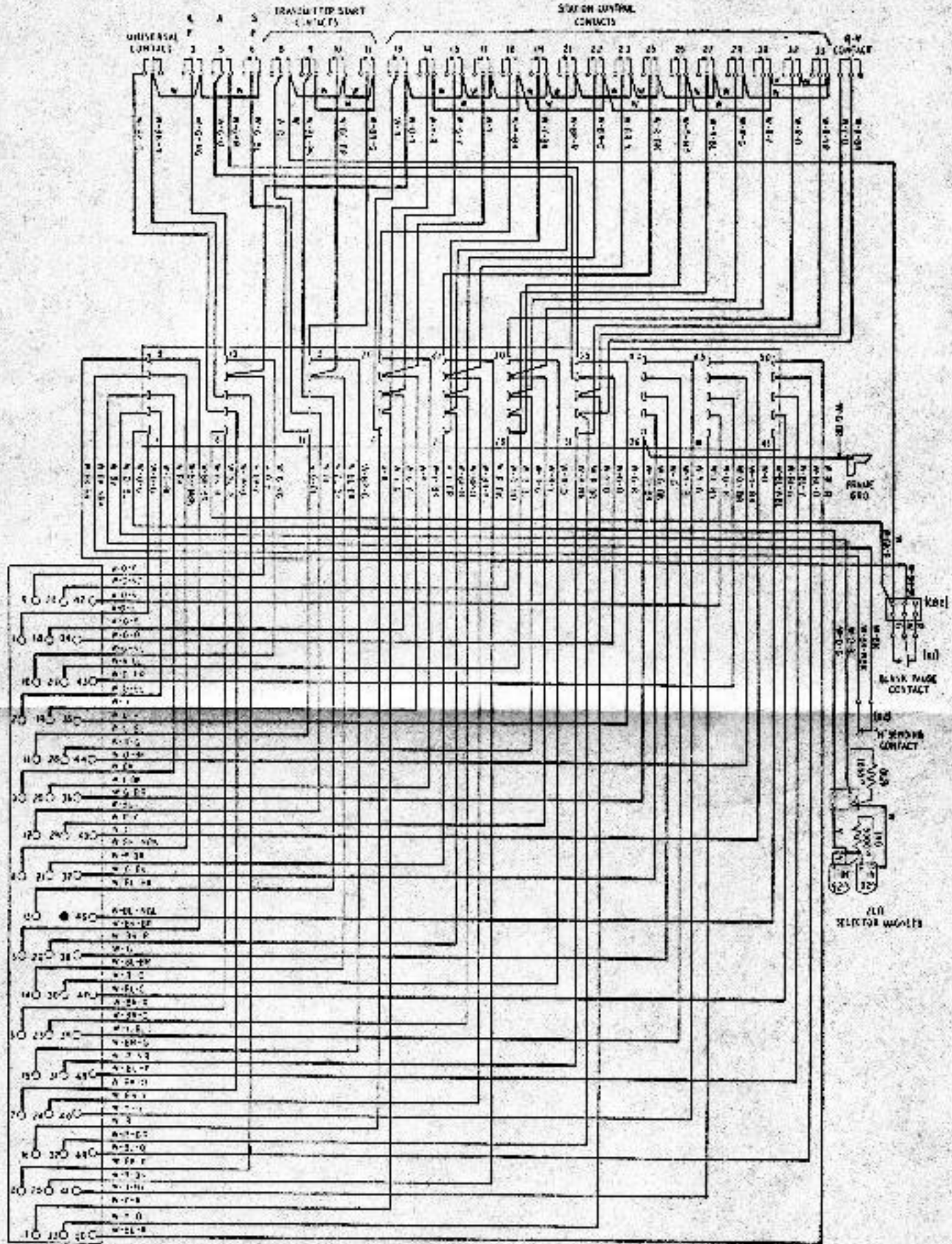


Fig. 5—Wiring of BS&L Sequential Selector Unit



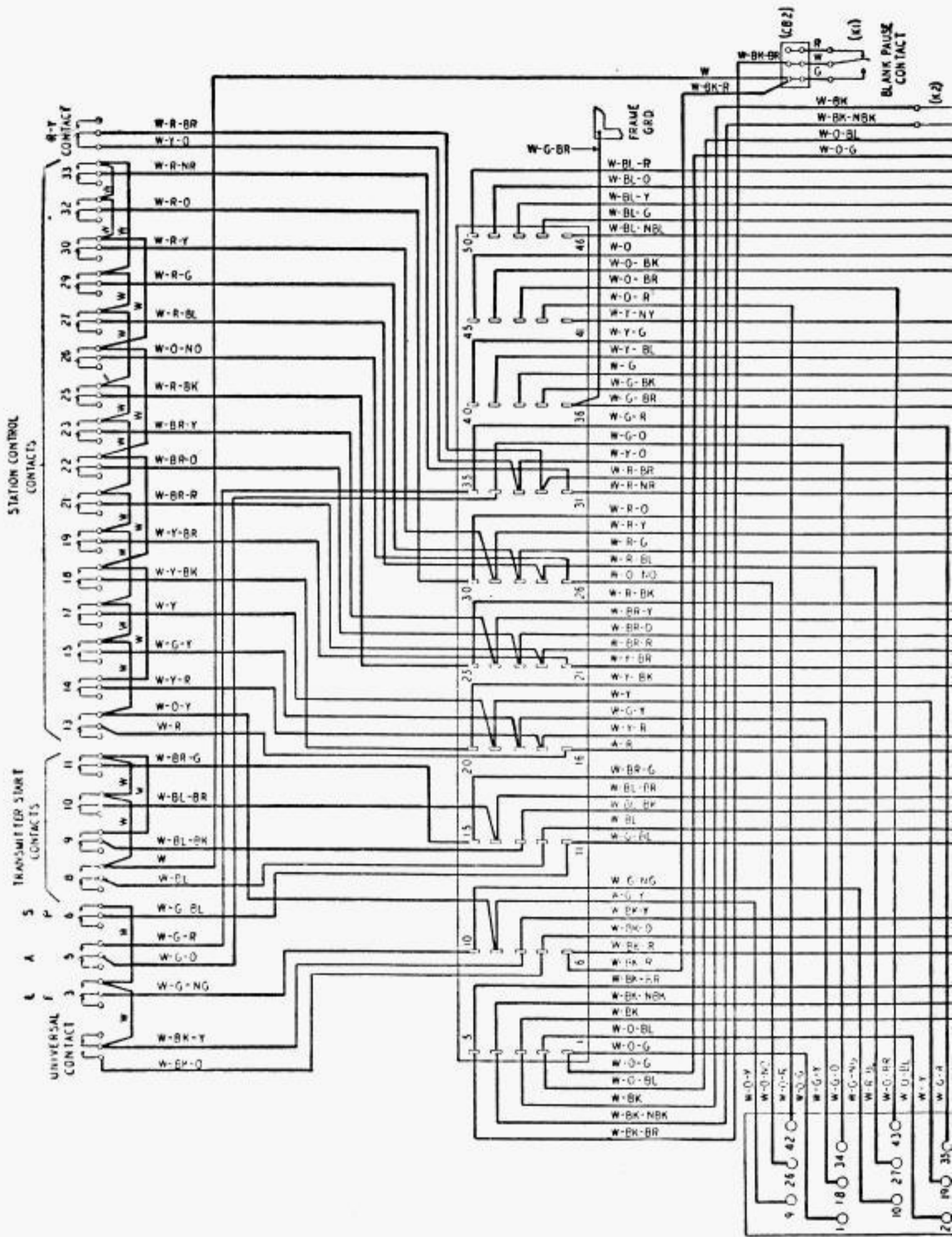
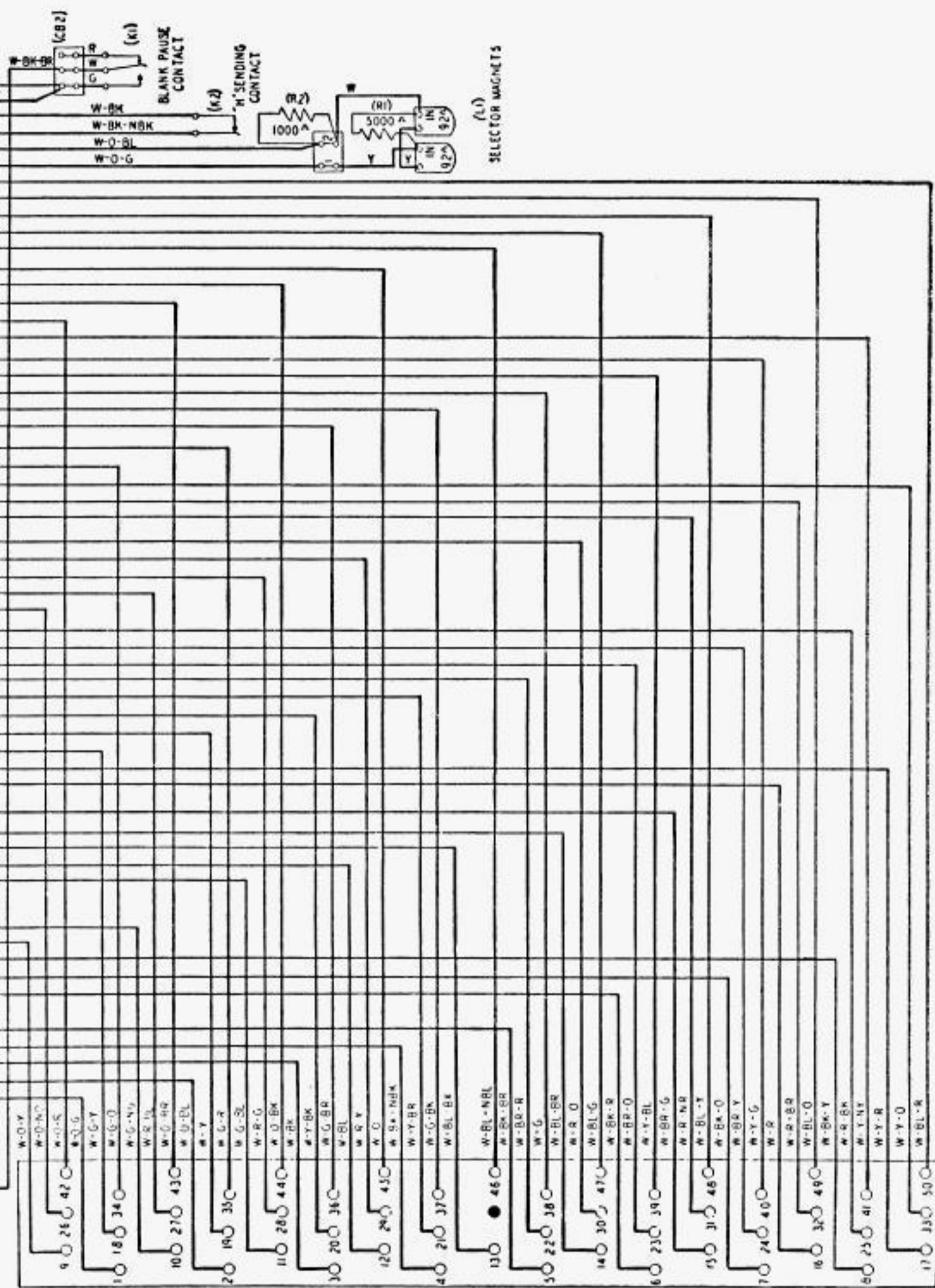


Fig. 5—Wiring of BS6L Sequential Selector Unit



Unit

WIRING DIAGRAM
SOTUS