

BELL SYSTEM PRACTICES
Teletypewriter Stations

SECTION P31.323
Issue 2, April, 1956
AT&T Co Standard

**INSTALLATION OF
TP95326 FILTER UNIT
FOR DC MOTOR GOVERNOR AND BRUSHES
OF 14 OR 20 TRANSMITTER-DISTRIBUTORS
(END-RING GOVERNOR)**

1. GENERAL

1.01 This section furnishes information for the installation of the TP95326 filter unit which suppresses radio-frequency induction from dc motor-governor contacts and brushes of 14 or 20 transmitter-distributors. The filter is suitable for use only on distributors equipped with end-ring governors operating at 60 or 75 speed for the 5-unit transmitter-distributors and at 53 or 66 speed for the 6-unit transmitter-distributors. **The TP95326 filter unit is rated manufacture discontinued and is superseded by the TP99250 filter unit.** However, the TP95326 filter unit need not be discarded providing it still operates satisfactorily.

1.02 This section is reissued to bring the parts numbers up to date in accordance with the latest information, to omit all reference to 40-speed operation and to change the connections in order to insure a good ground. Changes are indicated by marginal arrows.

- 1.03 The TP95326 filter unit assembly consists of:
- 2 TP70873 Brush Caps
 - 2 TP1266 Screws*
 - 2 TP2247 Washers*
 - 1 TP82474 Terminal
 - 1 TP94679 Capacitor
 - 1 TP94678 Bracket
 - 2 TP110434 Screws
 - 2 TP3640 Lockwashers
 - 2 TP125011 Washers
 - 1 TP84990 Screw
 - 1 TP92216 Filter Assembly (80A) which consists of:
 - 1 TP81825 Capacitor
 - 1 TP92291 Capacitor
 - 1 TP95936 Choke Coil (225A Inductor)

* Mounted in the TP70873 brush caps

2. PROCEDURE

Installation of TP95326 Filter Unit on 14 or 20 Transmitter-Distributors

- 2.01 To install the TP95326 filter unit on the transmitter-distributor, proceed as follows:
- (a) Remove the governor contact-bracket mounting screws and lockwashers.
 - (b) Discard the TP80335 plate.
 - (c) Mount the filter bracket in place of the TP80335 plate with the filter toward the right side of the transmitter-distributor using the screws and lockwashers previously removed.
 - (d) Remove the motor brush caps and replace with the TP70873 brush caps furnished.

2.02 Connect the filter as shown below:

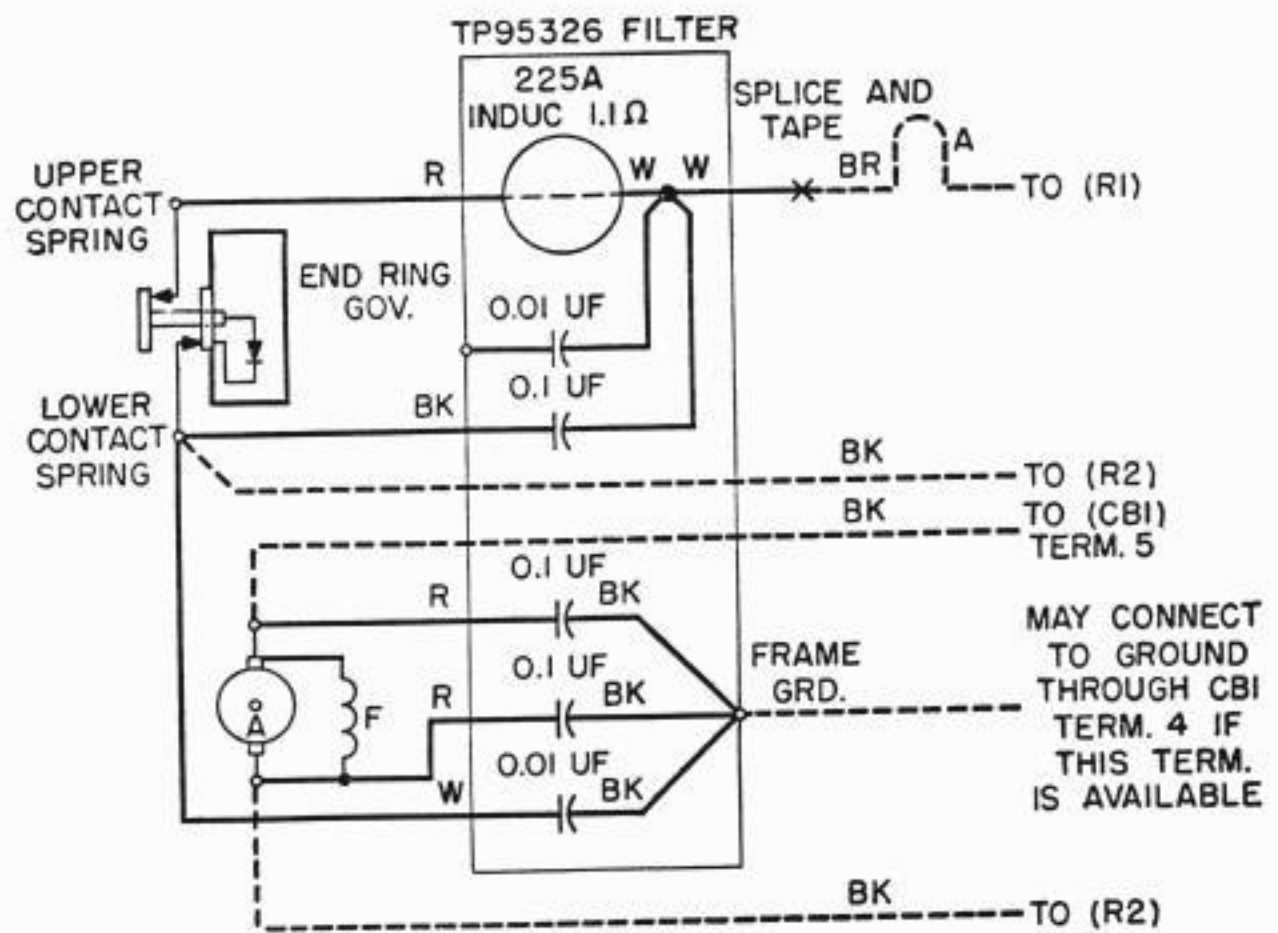


Fig. 1

- Connect the shorter red lead of the multiunit capacitor to the right brush cap of the motor securing it under the TP1266 screw and washer.
- Pass the other red lead of the multiunit capacitor under the motor bearing and secure this lead under the TP1266 screw and washer which is on the left brush cap of the motor. Then shape this lead so that it will not interfere with the governor.
- Remove the brown wire from the upper contact spring associated with the outer collector disc and connect the red coil lead to that contact spring instead. Splice the removed brown wire to the white coil lead and tape the splice.
- Connect the black capacitor lead and the white capacitor lead as indicated in the figure.

Note: On some units it may be found that the brown and black leads to the end-ring governor springs are reversed. If so, remove them and reconnect as indicated in the figure.

P31.323

Page 3
3 Pages

INSTALLATION OF
TP95326 FILTER UNIT
FOR DC MOTOR GOVERNOR AND BRUSHES
OF 14 OR 20 TRANSMITTER-DISTRIBUTORS
(END-RING GOVERNOR)