

BELL SYSTEM PRACTICES
Teletypewriter and Manual
Telegraph Station and P.B.X
Installation and Maintenance

SECTION P31.321
Issue 1, March, 1940
AT&T Co Standard

INSTALLATION OF 92223M FILTER UNIT FOR SENDING CONTACTS OF NO. 26 TELETYPEWRITER

1. GENERAL

1.01 This section furnishes information for the installation of the 92223M Filter Assembly for the sending contacts of the No. 26 Teletypewriter. The function of this filter unit is to suppress radio frequency induction from the sending contacts of this teletypewriter.

1.02 The No. 92223M Filter Assembly consists of the following parts:

- 1 93798M Filter Unit (assem.)
- 2 6746M Screws
- 2 2191M Lock Washers
- 1 91726 Condenser (assem.)
- 2 1160M Screws
- 2 2191M Lock Washers

2. PROCEDURE

Installation of the 93798M Filter Unit on No. 26 Teletypewriter

2.01 To install the 93798M Filter Unit proceed as follows:
(1) Mount the 93798M Filter Unit on the keyboard base using the two tapped holes which are located just in front of the forward edge of the typing unit casting. Secure the filter bracket with the two 6746M screws and 2191M lock washers furnished.

2.02 Refer to Fig. 1 and make the connections between the keyboard contacts and the filter unit proceeding as follows:

- (1) Remove the orange and black wires from the left terminal of the sending contacts.
- (2) Splice and tape the two wires just removed to the white filter lead.
- (3) Connect the black filter lead to the right-hand terminal of the sending contacts using as short and direct a lead as possible.
- (4) Connect the red shielded lead to the left-hand terminal of the sending contacts.
- (5) Shape the filter leads to avoid interference with the typing unit casting to permit removal or replacement of the typing unit. Also make sure that the shielding on the red lead clears the transmitting contacts by at least 1/4".

Installation of the 91726M Condenser on the No. 26 Teletypewriter.

2.03 Install the condense and its associated bracket proceeding as follows:

- (1) Using the two tapped holes provided in the keyboard casting located to the rear of the left-hand terminal block mount the bracket with the condenser lead extending to the left using the two 1160M screws and 2191M Lock Washers furnished.

2.04 Connect the condenser lead to terminal 26, the extreme left-hand terminal of the left-hand terminal block.

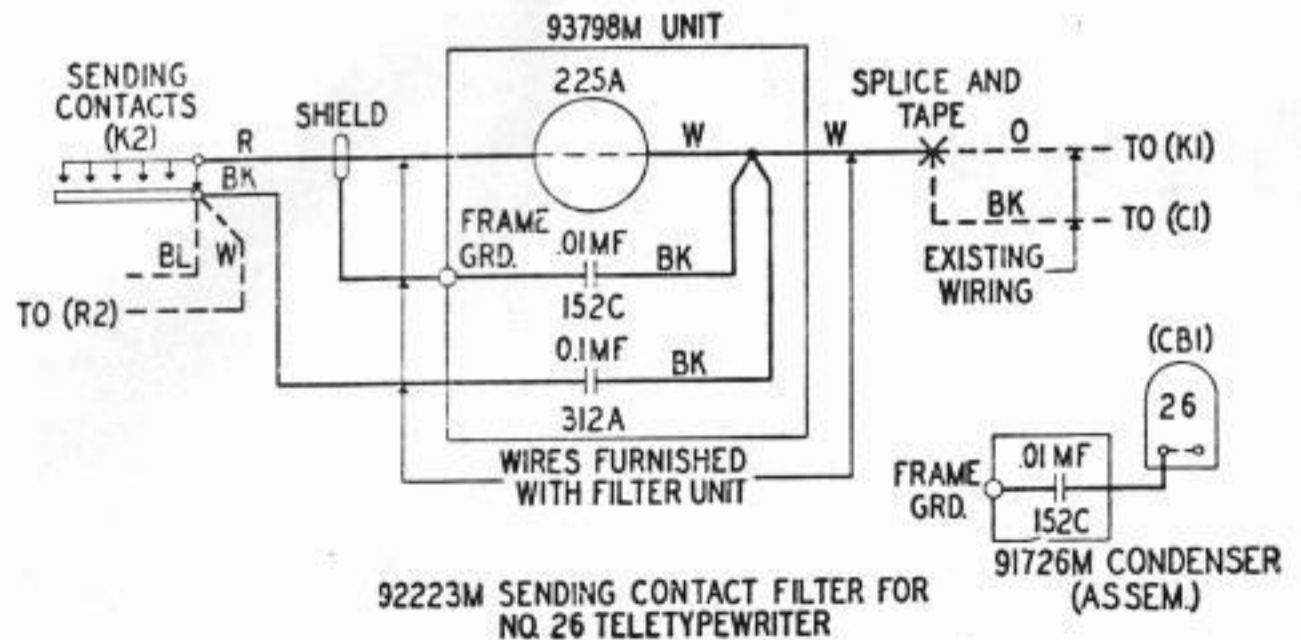


Fig. 1