

DATASPEED TAPE SENDERS 5A AND 5C
SCHEMATIC AND ACTUAL WIRING DIAGRAMS

CONTENTS	PAGE	
1. GENERAL	1	general revision marginal arrows ordinarily used to indicate changes and additions are omitted.
2. DIAGRAM INDEX	1	1.02 Refer to related sections for descriptive information. Diagrams concerned with the tape reader are included in standard tape reader section.
1. GENERAL		1.03 The attached material consists of Teletype Corporation diagrams. The index (Part 2) lists the title of each diagram, its Teletype identification number, and the issue number.
1.01 This section provides the schematic diagrams, actual wiring diagrams, inter-connecting diagram, and power distribution diagram for DATASPEED Tape Senders 5A and 5C. This section is reissued to provide the latest wiring diagrams, and cable diagram for the Tape Senders 5A and 5C. Since this is a		
		2. DIAGRAM INDEX

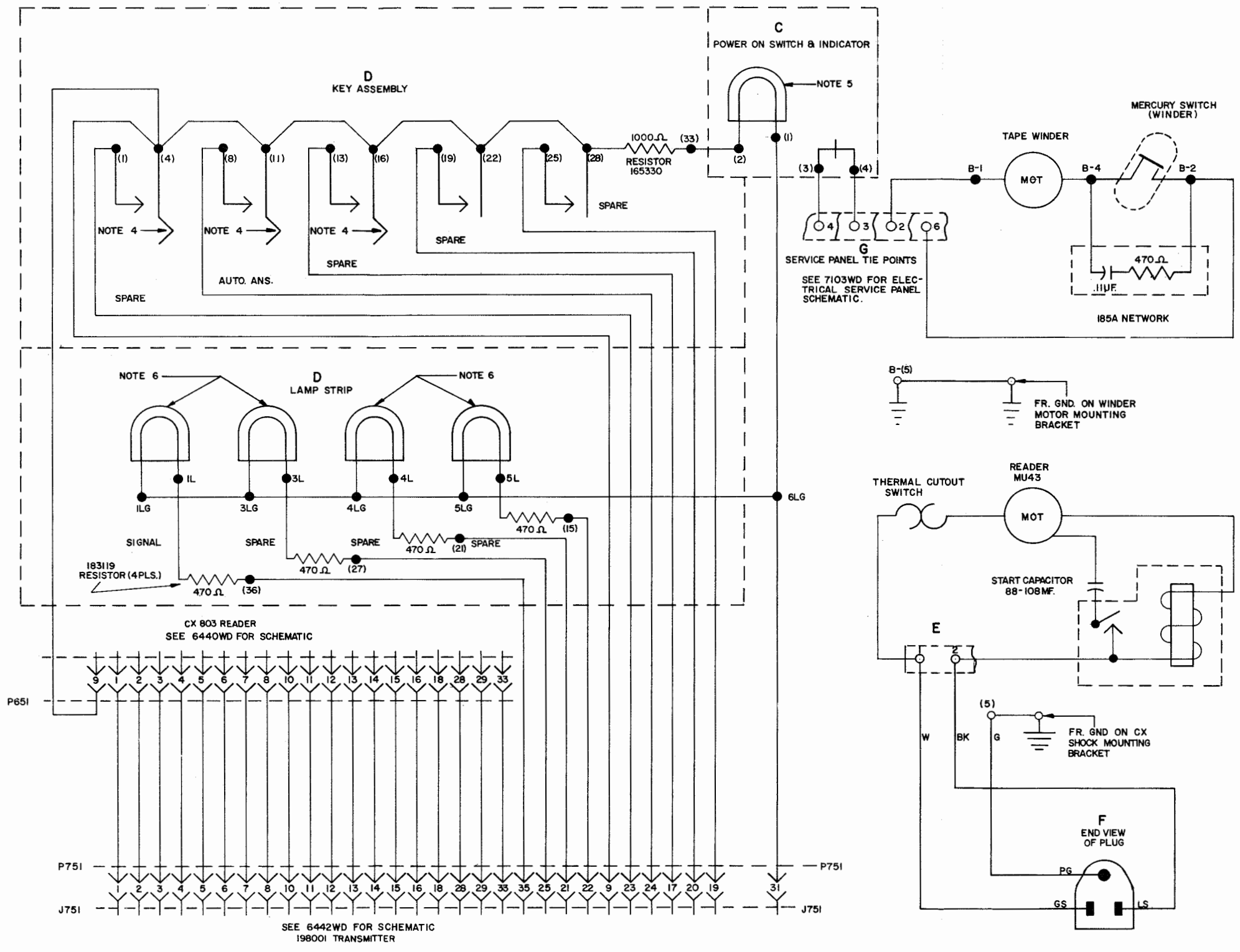
TITLE	DRAWING NUMBER	ISSUE					
		1	2	3	4	5	6
Schematic Wiring Diagram for AC364 Transmitting Terminal	6413WD			2			
Actual Wiring Diagram for AC364 Transmitting Terminal	6414WD			2			
Actual Wiring Diagram for CX803 Reader	6440WD	Orig	Orig	2			
Actual Wiring Diagram for 48 Volt Power Supply	6441WD	Orig	A	4			
Schematic Wiring Diagram for Transmitter Circuit	6442WD	A	4	10			
Actual Wiring Diagram for Motor Control Relay	6443WD	Orig	Orig	2			
Schematic Wiring Diagram for 48 Volt Power Supply	6444WD	A	A	3			
Actual Wiring Diagram for Transmitter Circuit Assembly	6445WD	B	4	9			
Actual Wiring Diagram for CXB200 & MU43 Motor Unit	6446WD	Orig	4	9			
Actual Wiring Diagram for Tape Sender	6447WD	Orig	Orig	2			
Cable Diagram for Tape Sender Cabinet VS229	7101WD	Orig	Orig	1			
Actual Wiring Diagram for Electrical Service Panel	7103WD	Orig	3	3			

6413 WD

REVISIONS

ISSUE	DATE	AUTH. NO.
1	2-22-65	16407-R
2	6-29-65	87244

- NOTES**
- REFER TO 6414 WD FOR ACTUAL WIRING DIAGRAM.
 - TERMINAL DESIGNATIONS IN PARENTHESIS () ARE FOR REFERENCE ONLY AND NOT MARKED ON COMPONENT
 - ← INDICATES TERMINALS ON MALE PLUG P751
 - ↘ INDICATES TERMINALS ON FEMALE PLUG P651
 - INDICATES LOCKING TYPE PUSH BUTTON SWITCH (3-PL'S.)
 - WHITE LAMP + 28V.
 - WHITE LAMPS + 48V.



SCHEMATIC WIRING DIAGRAM FOR AC364 DATASPEED TRANSMITTING TERMINAL

APPROVALS

D AND R *HRK* E OF M *[Signature]*

E-NUMBER

PROD. NO. 6413 WD

DATE 12-23-64

P.D. FILE NO. 1-A143AA

DRAWN G.R.S. CHKD. *[Signature]*

ENGD. R.C.H. APPD. *[Signature]*

TELETYPE CORPORATION

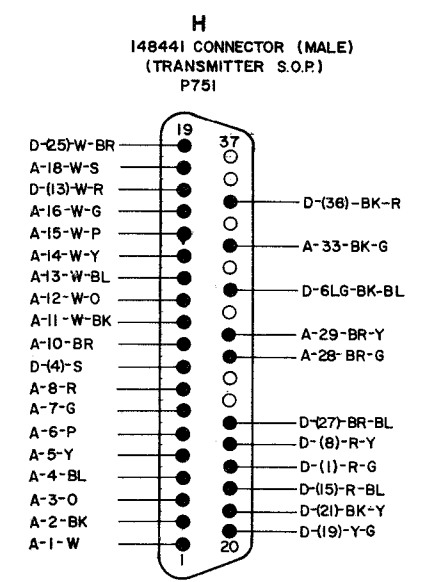
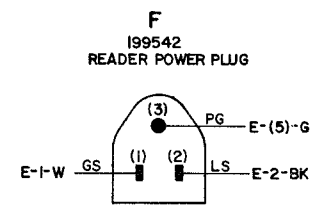
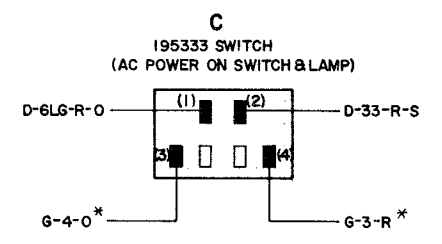
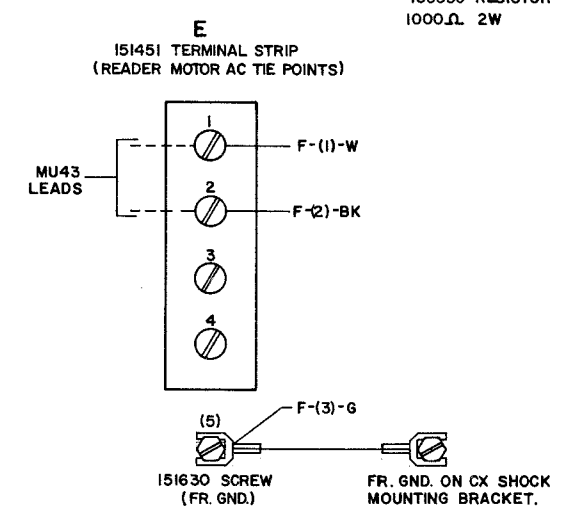
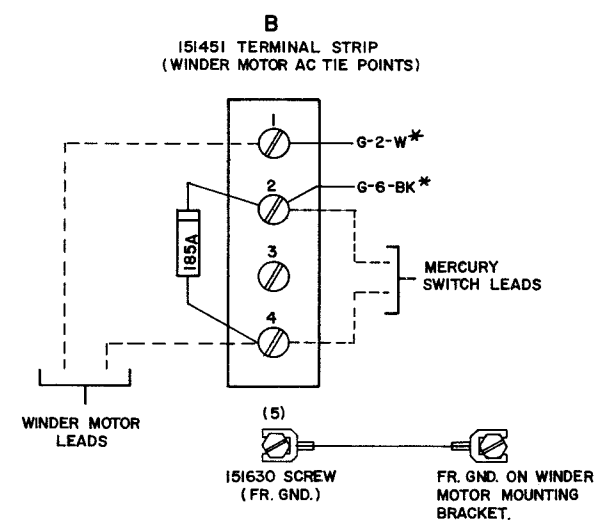
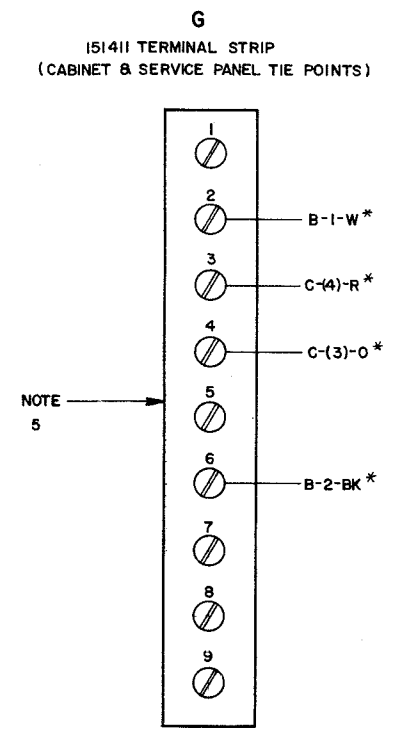
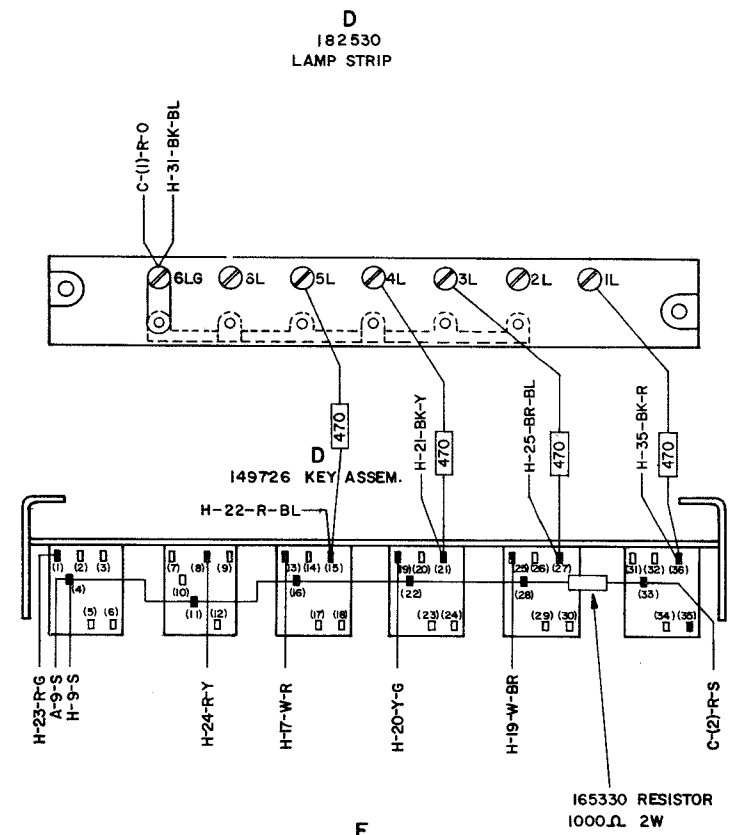
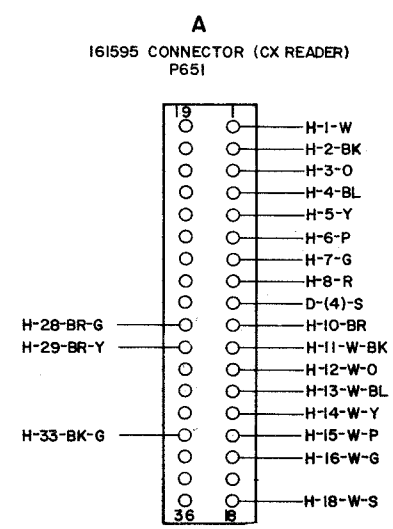
6413 WD

6414 WD

REVISIONS

ISSUE	DATE	AUTH. NO.
1	2-22-65	16407-R
2	6-29-65	87244

- NO. NOTES**
1. WIRING LEGEND
 DISTANT TERMINATING AREA
 DISTANT TERMINAL DESIGNATION
 WIRE COLOR CODE
 H-1-W
 2. COLOR CODE
 W-WHITE P-PURPLE
 G-GREEN Y-YELLOW
 R-RED BL-BLUE
 S-SLATE BK-BLACK
 O-ORANGE BR-BROWN
 3. TERMINAL DESIGNATIONS ENCLOSED IN PARENTHESES () ARE NOT MARKED ON THE COMPONENTS.
 4. * DENOTES 18GA WIRE.
 5. REFER TO 7103WD FOR ELECTRICAL SERVICE PANEL WIRING.
 6. REFER TO 6413WD FOR SCHEMATIC WIRING DIAGRAM.
 7. ALL CONNECTORS ARE VIEWED FROM WIRING SIDE.



ACTUAL WIRING DIAGRAM FOR AC364 DATA SPEED TRANSMITTING TERMINAL

APPROVALS

D AND R <i>ABK</i>	E OF M <i>[Signature]</i>
-----------------------	------------------------------

E-NUMBER
PROD. NO. 6414WD

DATE 12-23-64

P.D. FILE NO. 1-A143AA

DRAWN G.R.S.	CHKD. <i>[Signature]</i>
ENGD. R.C.H.	APPD. <i>[Signature]</i>

TELETYPE CORPORATION

6414 WD

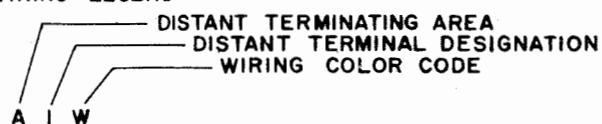
6440WD

REVISIONS

ISSUE	DATE	AUTH. NO.
2	11-20-64	84989

NOTES

1. WIRING LEGEND



2. COLOR CODE

BK	BLACK	W Y	WHITE YELLOW
BR	BROWN	W G	WHITE GREEN
R	RED	W BL	WHITE BLUE
O	ORANGE	W P	WHITE PURPLE
Y	YELLOW	W S	WHITE SLATE
G	GREEN	BK R	BLACK RED
BL	BLUE	BK Y	BLACK YELLOW
P	PURPLE	BK G	BLACK GREEN
S	SLATE	R Y	RED YELLOW
WBK	WHITE BLACK	R G	RED GREEN
WBR	WHITE BROWN	WBK Y	WHITE BLACK YELLOW
WR	WHITE RED	WBK G	WHITE BLACK GREEN
WO	WHITE ORANGE	W R Y	WHITE RED YELLOW

3. CONTACTS SHOWN IN UNOPERATED POSITION.

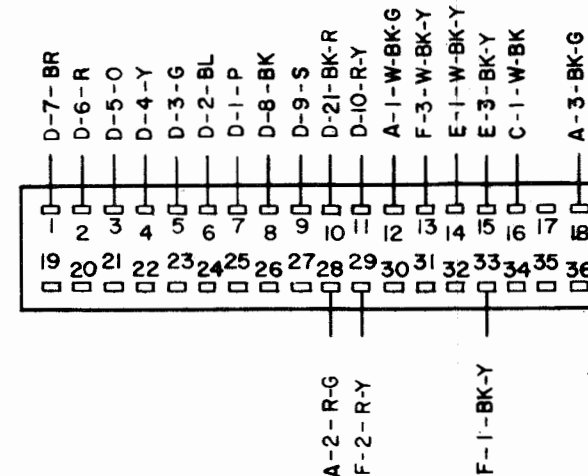
4. NUMBERS ENCLOSED BY PARENTHESES () ARE USED FOR REFERENCE AND ARE NOT NECESSARILY SHOWN ON THE PARTS.

5. STRAP WITH *22 GAGE WIRE AS INDICATED.

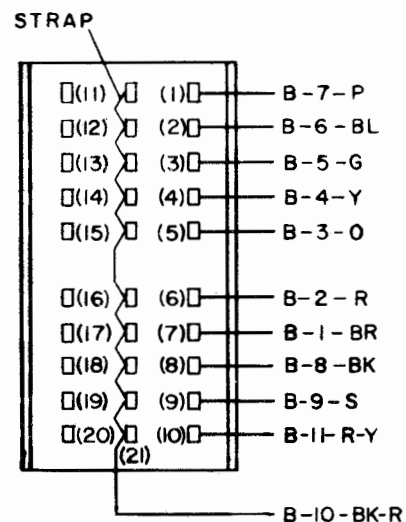
C
GROUND SCREW



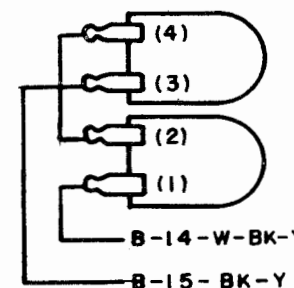
B
CONNECTOR (PLUG)
(VIEWED FROM RECEPTACLE END)



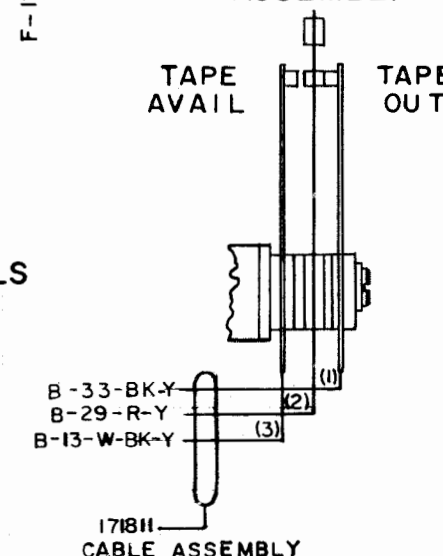
D
CODE READING CONTACT ASSEMBLY
(VIEWED FROM SOLDER TERMINAL END)



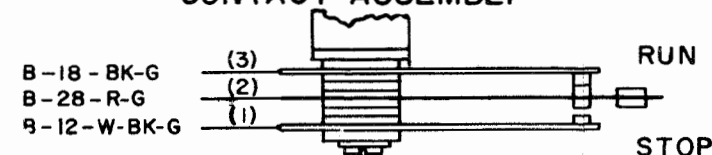
E
OPERATE MAGNET COILS



F
TAPE-OUT CONTACT ASSEMBLY



A
START-STOP (TIGHT-TAPE) CONTACT ASSEMBLY



ACTUAL WIRING DIAGRAM
CX803 READER

APPROVALS

D AND R E OF M

E-NUMBER

PROD. NO. 6440WD

DATE: 8-20-63

P.D. FILE NO. 1-A143AA

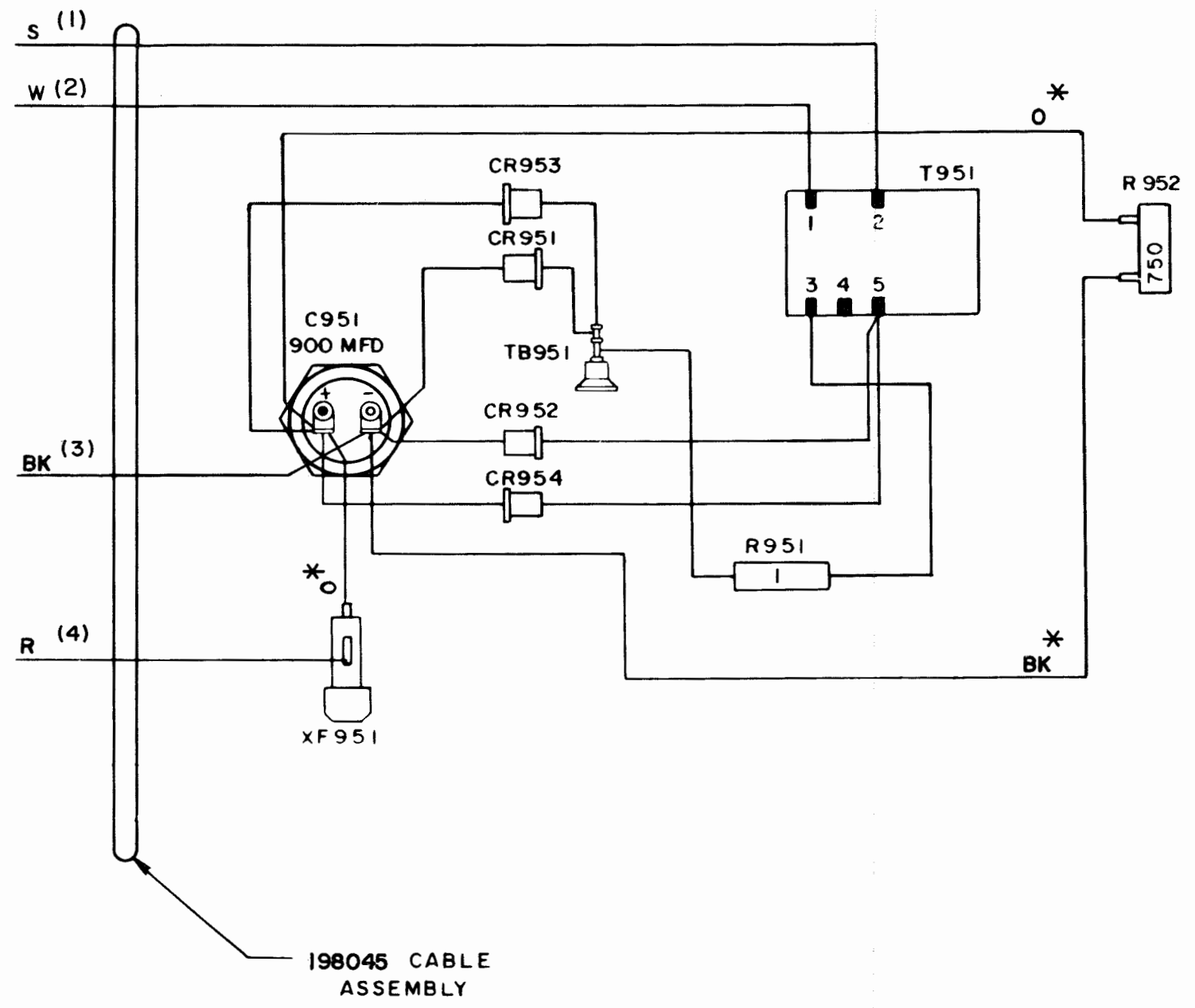
DRAWN G.J.M. CHKD.

ENGD. J.H. APPD. *ROR*

TELETYPE CORPORATION

6440 WD

NO.	NOTES
1.	USE 60340 RM TUBING TO INSULATE DIODE LEADS AND RESISTOR LEADS WHERE NECESSARY.
2.	WIRE COLOR CODES: WHITE - W SLATE - S BLACK - BK RED - R ORANGE - O
3.	FUSE VALUE CORRESPONDING TO FUSE HOLDER XF951—1.5 A.
4.	CONNECTIONS VIEWED FROM TERMINAL SIDE.
5.	REFER TO 6444WB FOR SCHEMATIC WIRING.
6.	* ASTERISK INDICATES WIRE IS NOT PART OF CABLE ASSEMBLY.
7.	TERMINAL DESIGNATIONS IN PARENTHESIS () ARE FOR REFERENCE ONLY AND NOT MARKED ON COMPONENTS.
8.	USE 198045 CABLE ASSEMBLY.
9.	WIRES IDENTIFIED WITH ASTERISK ARE: BLACK — RM31900 ORANGE — RM31901



6441 WD

ISSUE	DATE	AUTH NO
2	12-5-63	79534
3	11-20-64	84989
4	2-26-65	86063

ACTUAL WIRING DIAGRAM FOR 48 VOLT POWER SUPPLY ASSEMBLY NO. 198000

APPROVALS

D AND R E OF M
HJK 10/18/63 *[Signature]*

E-NUMBER

PROD. NO. 6441 WD

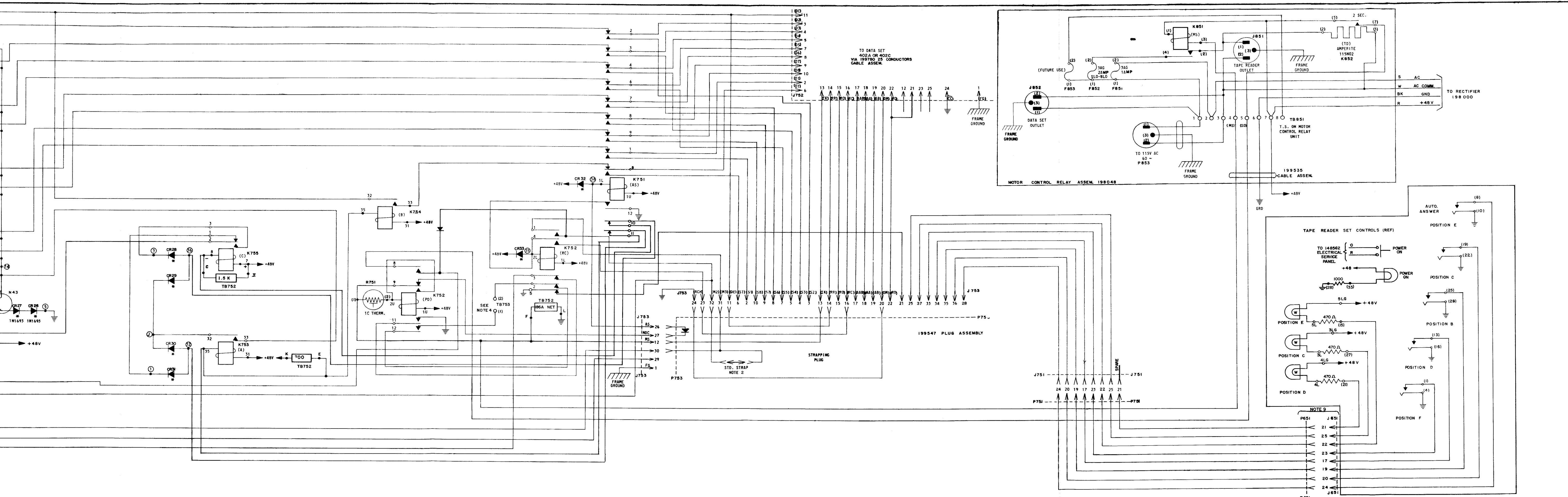
DATE: 8-26-63

PD. FILE NO 1-A143 AA

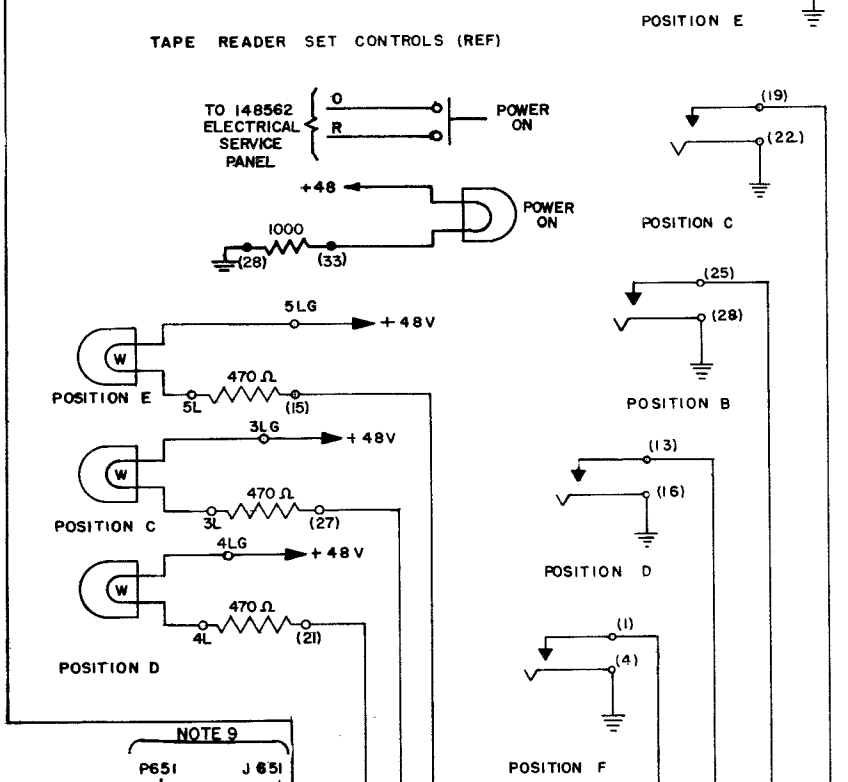
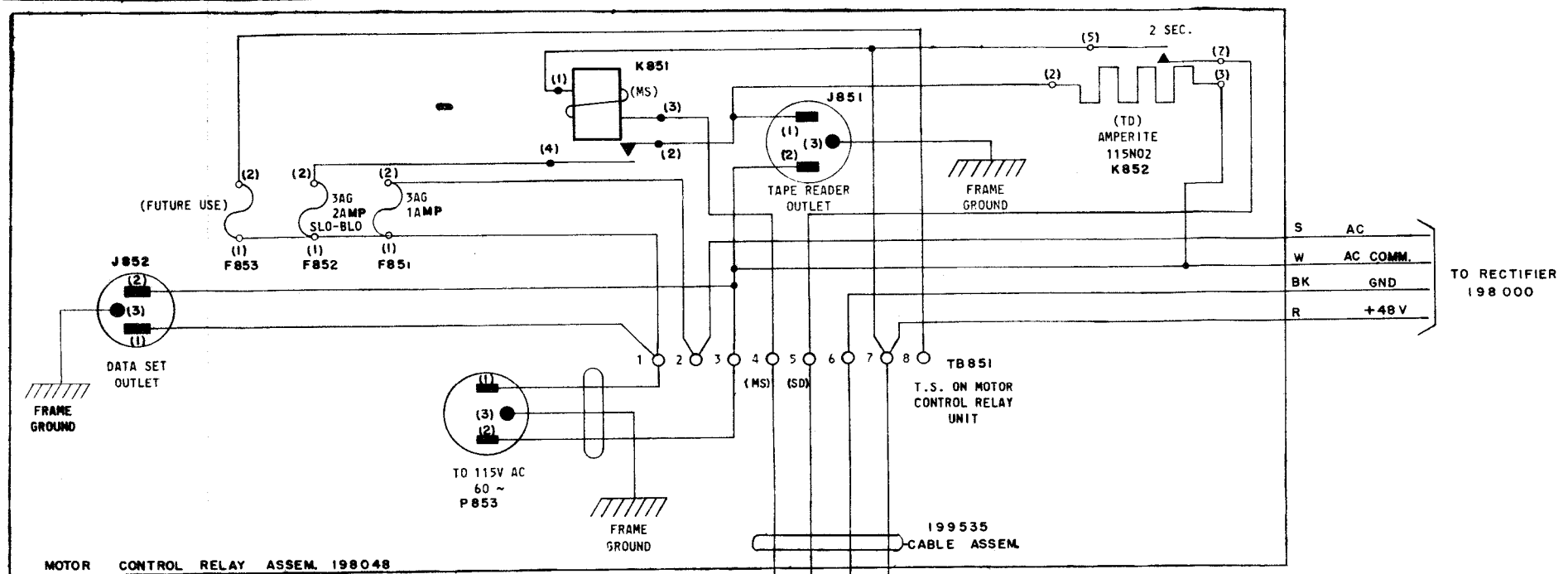
DRAWN AHP CHKD
 ENGD JHH APPD *RJR*

TELETYPE CORPORATION

6441 WD



TO DATA SET
402A OR 402C
VIA 199780 25 CONDUCTORS
CABLE ASSEM.



NOTE 9

6442 WD			
REVISIONS			
ISSUE NO.	DATE	AUTHOR.	CHKD.
2	4-24-64	81276	
3	8-18-64	83081	
4	9-30-64	83086	
5	10-28-64	84282	
6	11-20-64	84989	
7	4-26-65	86382	
8	4-29-65	86383	
9	5-19-65	87240	
10	6-29-65	87244	

SCHEMATIC
WIRING DIAGRAM
FOR
TYPE 5 DATASPEED
TRANSMITTER
CIRCUIT

APPROVALS
R AND D E OF M

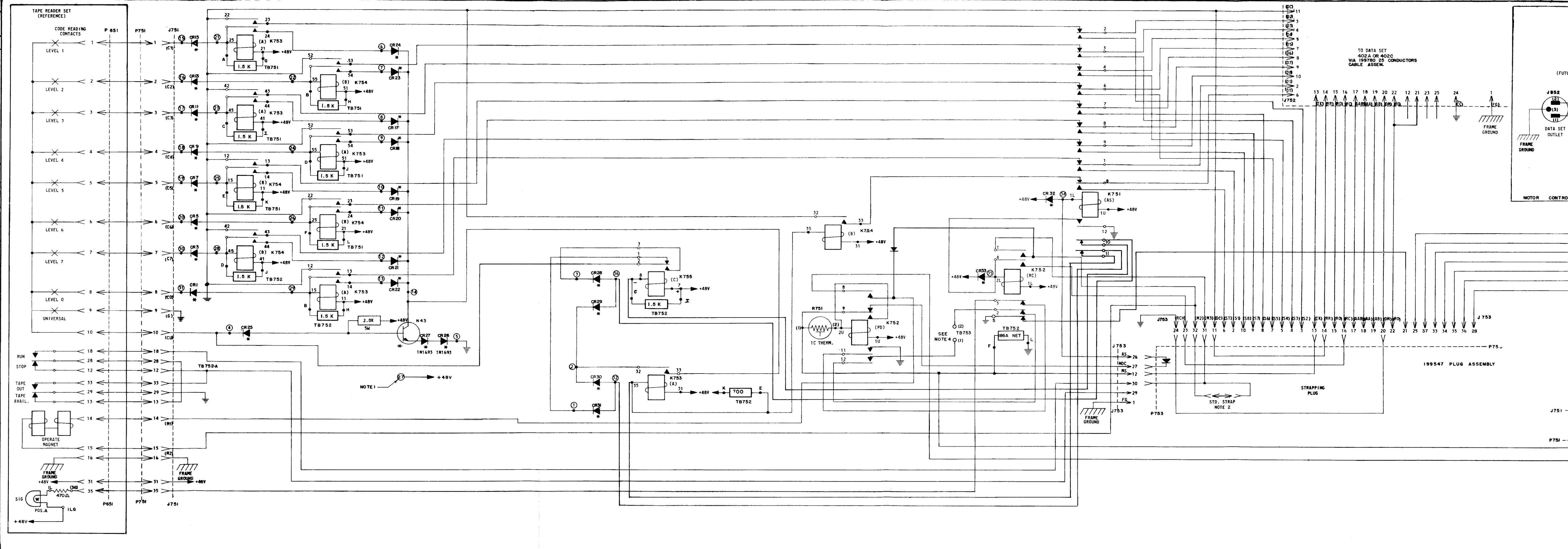
C NUMBER
PROD. NUMBER: 6442 WD
DATE: 8-26-63
P.D. FILE NO.: 1-A 143 AA
DRAWN: AHP CHKD
ENGD: JMH APPD: RPR

TELETYPE
CORPORATION
6442 WD

- NOTES**
- PARTS MARKED WITH ASTERISK (*) ARE MOUNTED ON CIRCUIT CARD. ENCIRCLED NUMBERS ARE CIRCUIT CARD SOCKET TERMINALS. E.C. 582
 - REMOVE STRAP WHEN REVERSE CHANNEL SERVICE IS PROVIDED IN DATA SET 402C
 - KEY AND LAMP FUNCTIONS

POS.	KEY	LAMP
A		
B		
C		
D		
E	AUTO*	
F	CHECK**	SIG***

*USED WHEN AUTO ANS FEATURE IS SUPPLIED.
**USED WHEN PARITY INSERTION FEATURE IS SUPPLIED.
***USED WHEN ASSOC. 402C DATA SET IS WIRED FOR REVERSE CHANNEL OPERATION.
 - TERMINAL STRIP FOR ALARM BELL OR BUZZER NOT SUPPLIED WITH EQUIPMENT.
 - TERMINAL DESIGNATIONS IN PARENTHESIS () ARE FOR REFERENCE ONLY AND NOT MARKED ON COMPONENTS.
 - REFER TO 6445WD, 6443WD, 7103WD FOR ACTUAL WIRING DIAGRAM.
 - ALL VOLTAGES DC UNLESS OTHERWISE SPECIFIED.
 - ◀ INDICATES TERMINALS ON RECEPTACLE J751 AND J752
 - ▶ INDICATES TERMINALS ON RECEPTACLE J753.
 - THIS CONNECTION IS ELIMINATED ON VS 229. THE WIRING IS DIRECT TO P 751.



6443 WD

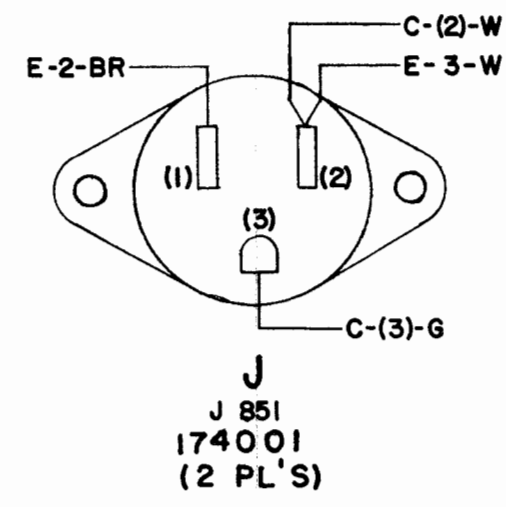
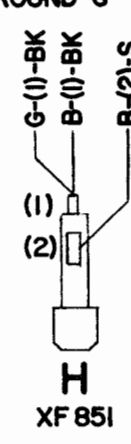
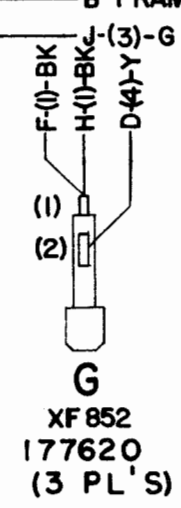
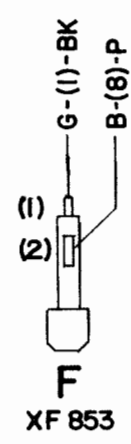
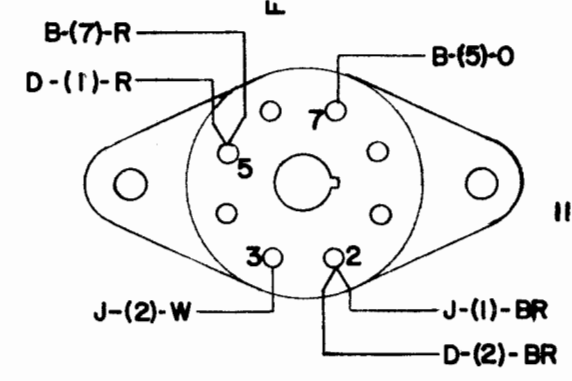
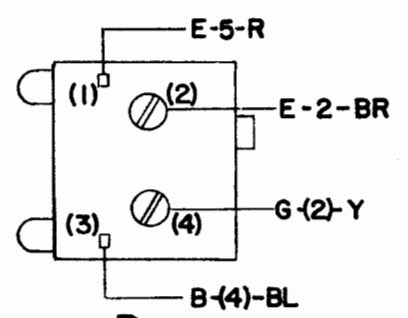
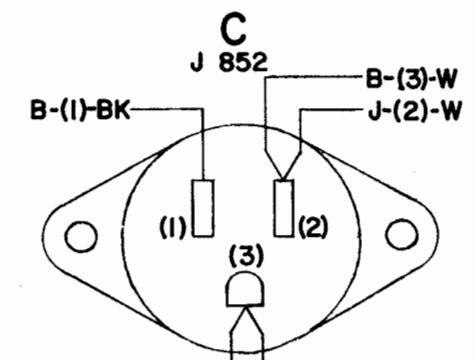
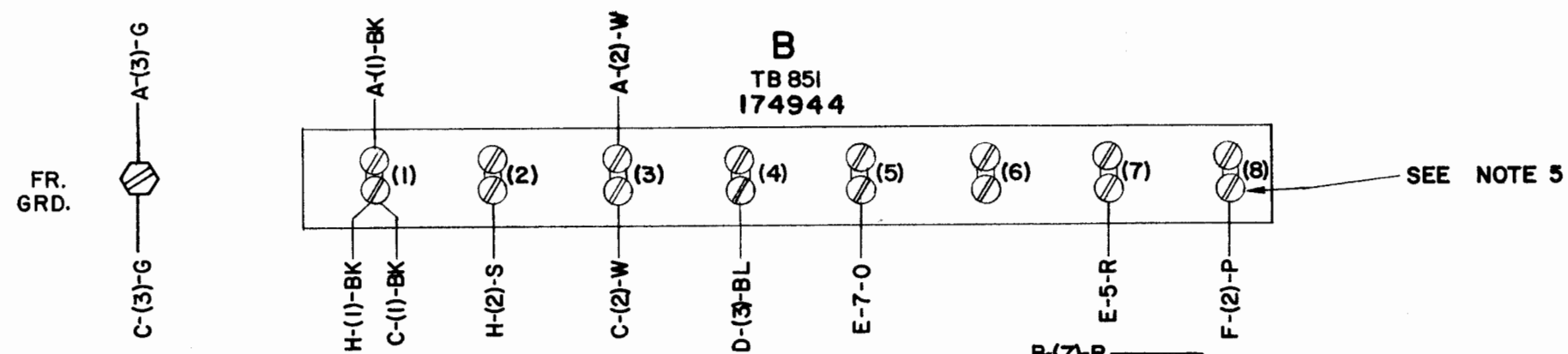
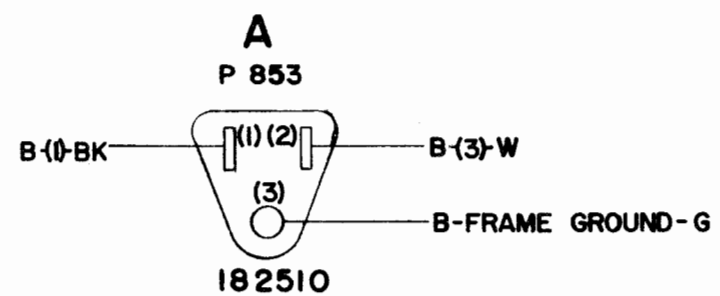
ISSUE	DATE	AUTH. NO.
2	3-30-65	86358

- NO. NOTES
- REFER TO 6442 WD FOR SCHEMATIC.
 - WIRE COLOR CODE**

BK	-	BLACK	-	RM 31880
W	-	WHITE	-	RM 31881
R	-	RED	-	RM 31882
G	-	GREEN	-	RM 31883
O	-	ORANGE	-	RM 31884
BL	-	BLUE	-	RM 31885
Y	-	YELLOW	-	RM 31886
BR	-	BROWN	-	RM 31887
P	-	PURPLE	-	RM 31888
S	-	SLATE	-	RM 31889
 - TERMINAL DESIGNATIONS IN PARENTHESES () ARE FOR REFERENCE ONLY AND ARE NOT MARKED ON COMPONENTS.
 - FUSE VALUE CORRESPONDING TO FUSE HOLDER
XF 851 - 1 AMP
XF 852 - 2 AMP
XF 853 - 1 AMP
 - USE 151626 TERMINALS, 12 PLACES.
 - WIRING LEGEND**

— DISTANT TERMINATING AREA
 — DISTANT TERMINATING DESIGNATION
 — WIRE COLOR CODE

A-I-BR.



ACTUAL WIRING DIAGRAM FOR MOTOR CONTROL RELAY ASSEM. NO. 198048

APPROVALS

D AND R	E OF M
<i>[Signature]</i>	<i>[Signature]</i>
E-NUMBER	
PROD. NO. 6443WD	
DATE: 8-29-63	
P.D. FILE NO. 1-A143 AA	
DRAWN. AHP	CHKD. <i>[Signature]</i>
ENGD. JHH	APPD. <i>[Signature]</i>

TELETYPE CORPORATION

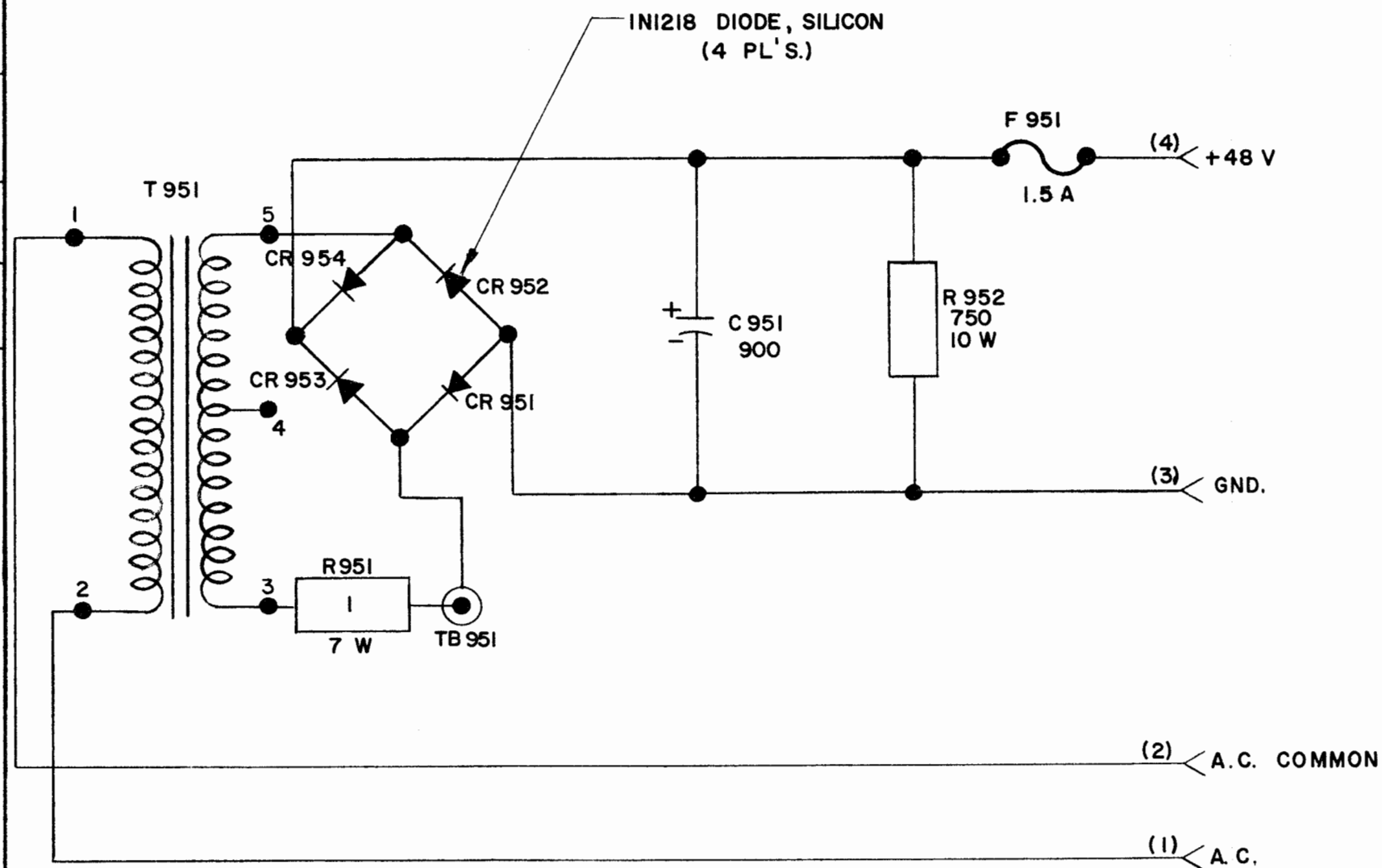
6443 WD

6444 WD

ISSUE	DATE	AUTH. NO.
2	12-5-63	79534
3	2-26-65	86063

- NO** **NOTES**
- REFER TO 6441 WD FOR ACTUAL WIRING DIAGRAM.
 - ALL VOLTAGES DC UNLESS OTHERWISE SPECIFIED.
 - RESISTANCE VALUES OF WINDINGS ON TRANSFORMER T951

BETWEEN TAPS	RESISTANCE
1 & 2	4 Ω
3 & 4	0.526 Ω
4 & 5	0.6 Ω
 - TERMINAL DESIGNATIONS IN PARENTHESES () ARE FOR REFERENCE ONLY AND ARE NOT MARKED ON COMPONENTS.
 - ALL RESISTORS 1/2 WATT AND RESISTANCE VALUES IN OHMS, UNLESS OTHERWISE SPECIFIED.
 - ALL CAPACITANCE VALUES IN MICROFARADS, UNLESS OTHERWISE SPECIFIED.



SCHEMATIC
WIRING DIAGRAM
FOR
48 VOLT
POWER SUPPLY
ASSEMBLY NO. 198000

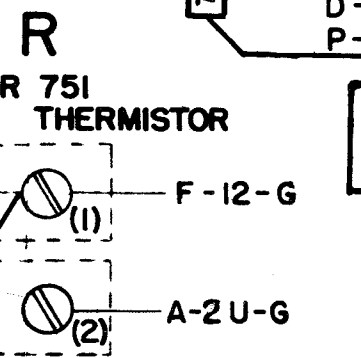
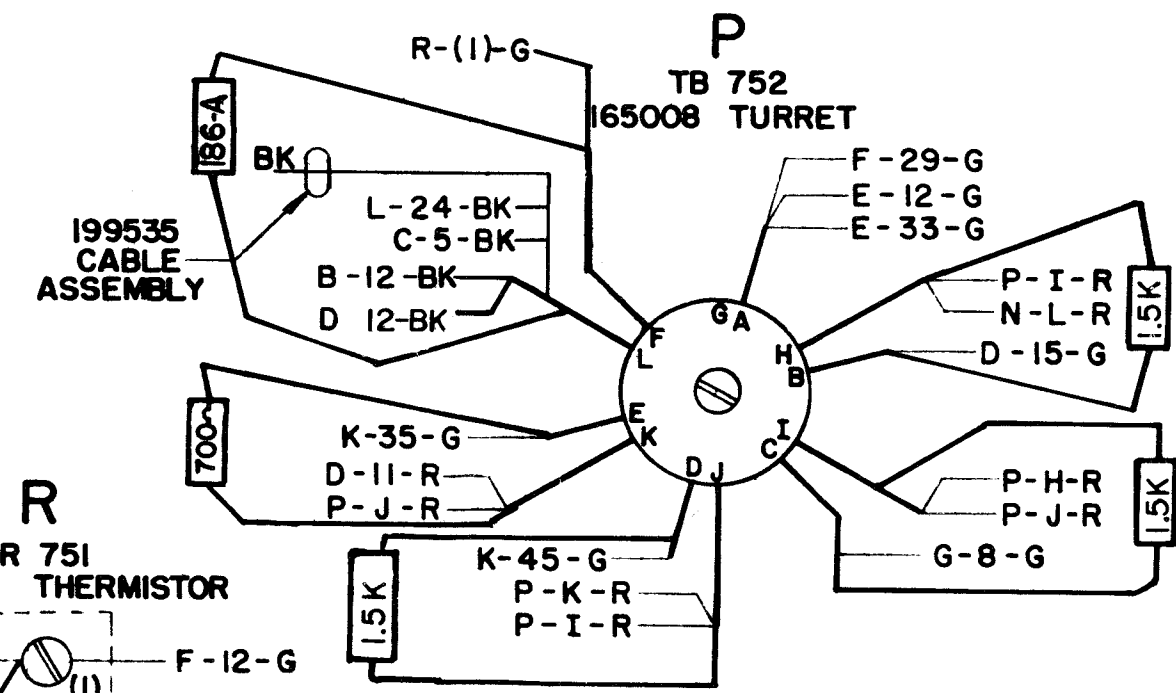
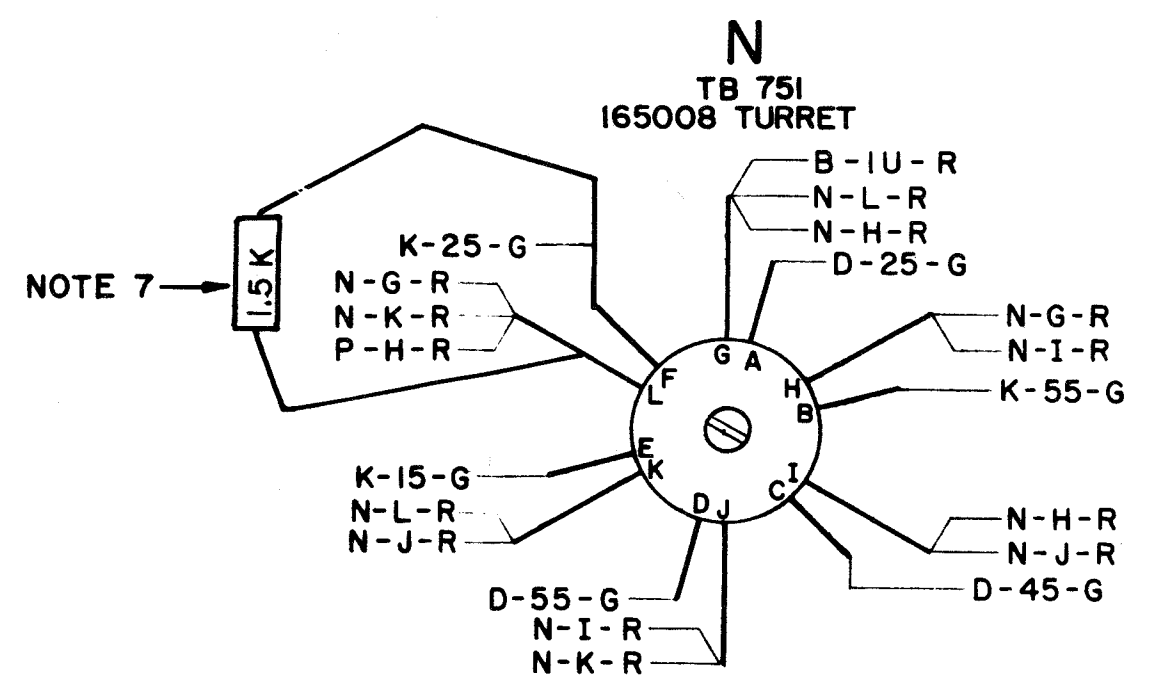
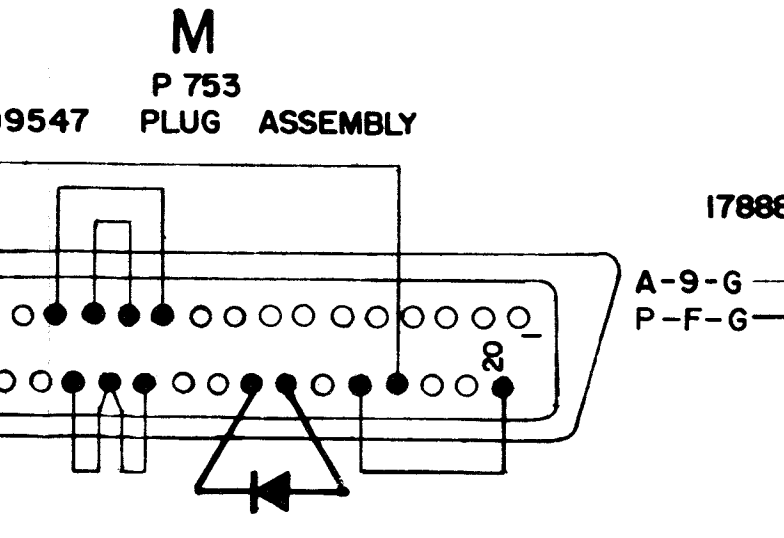
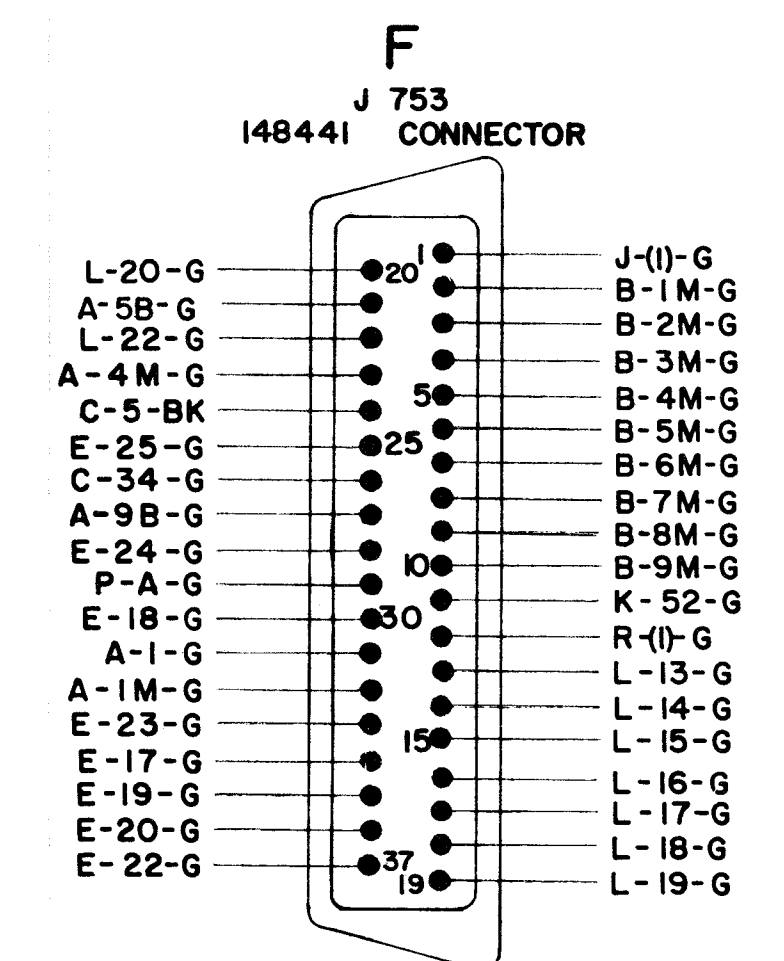
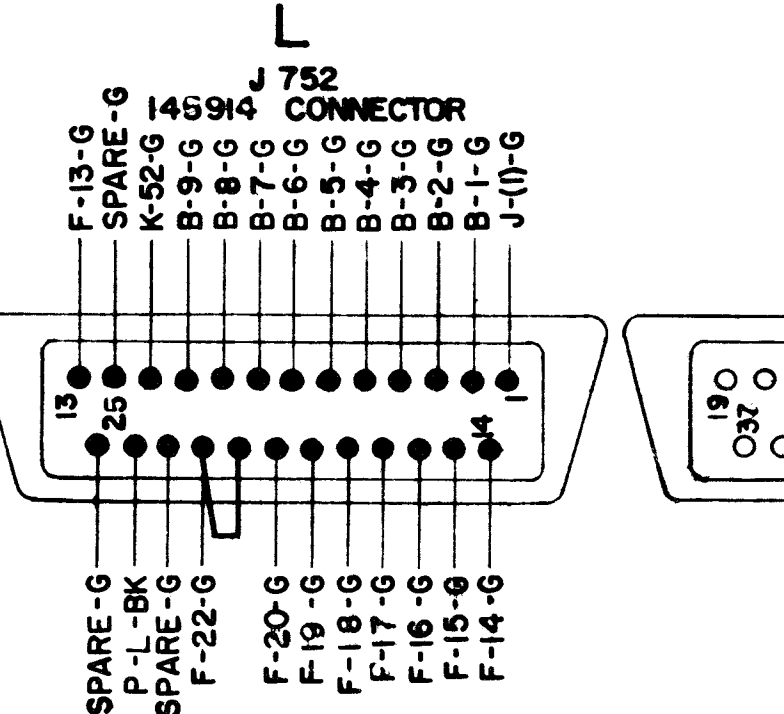
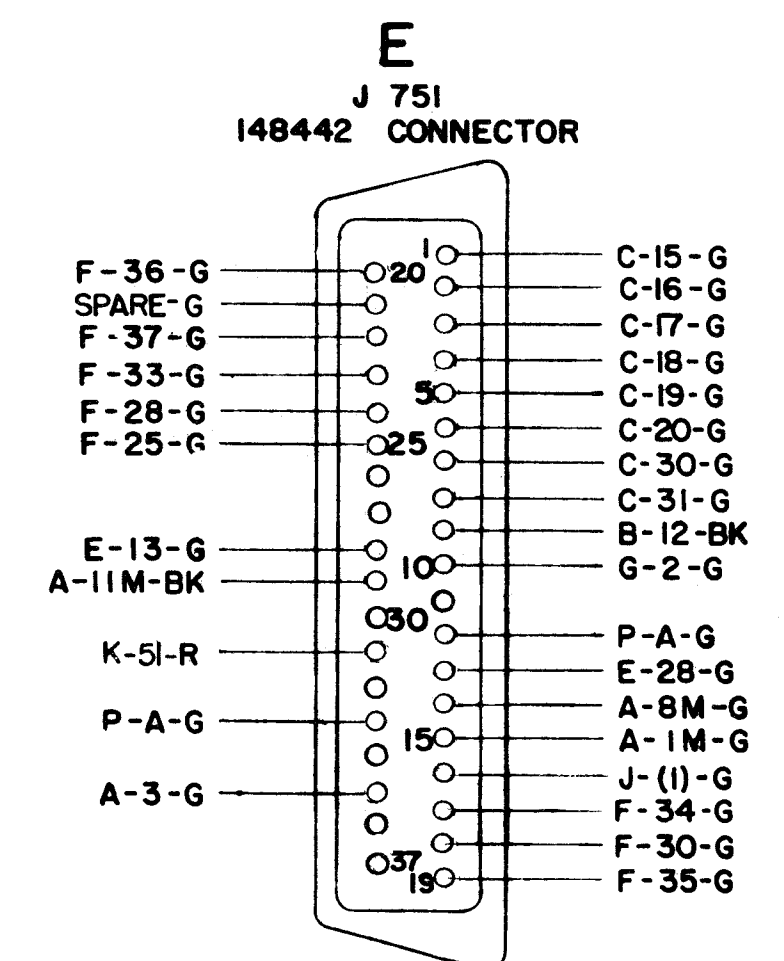
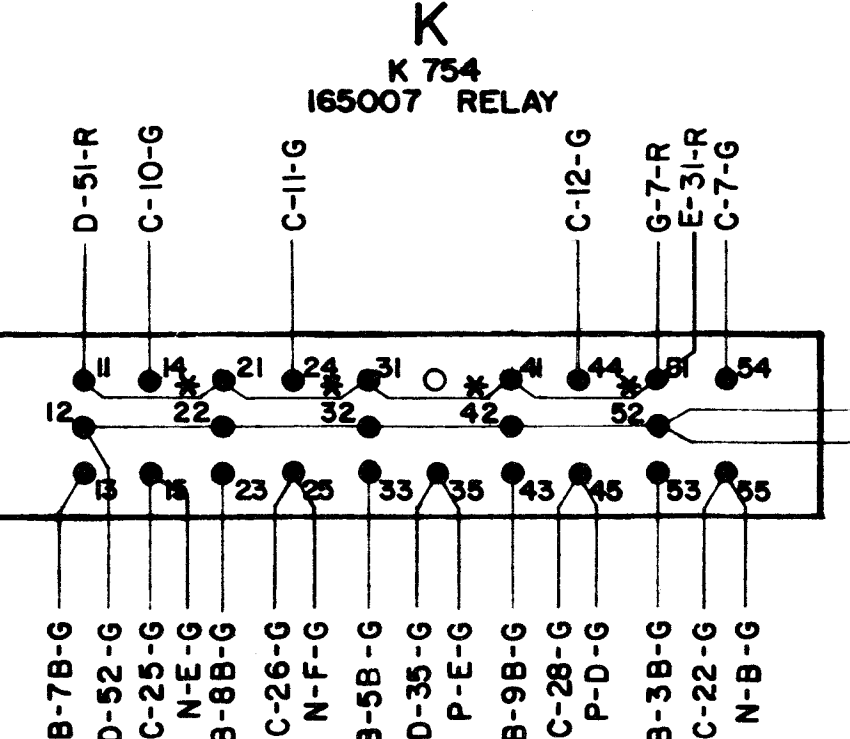
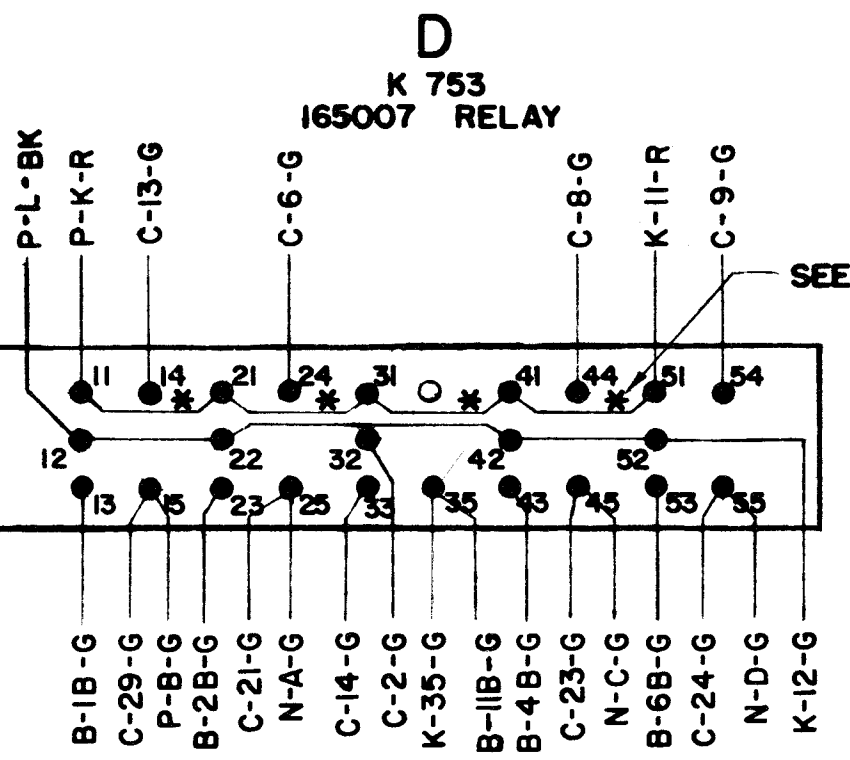
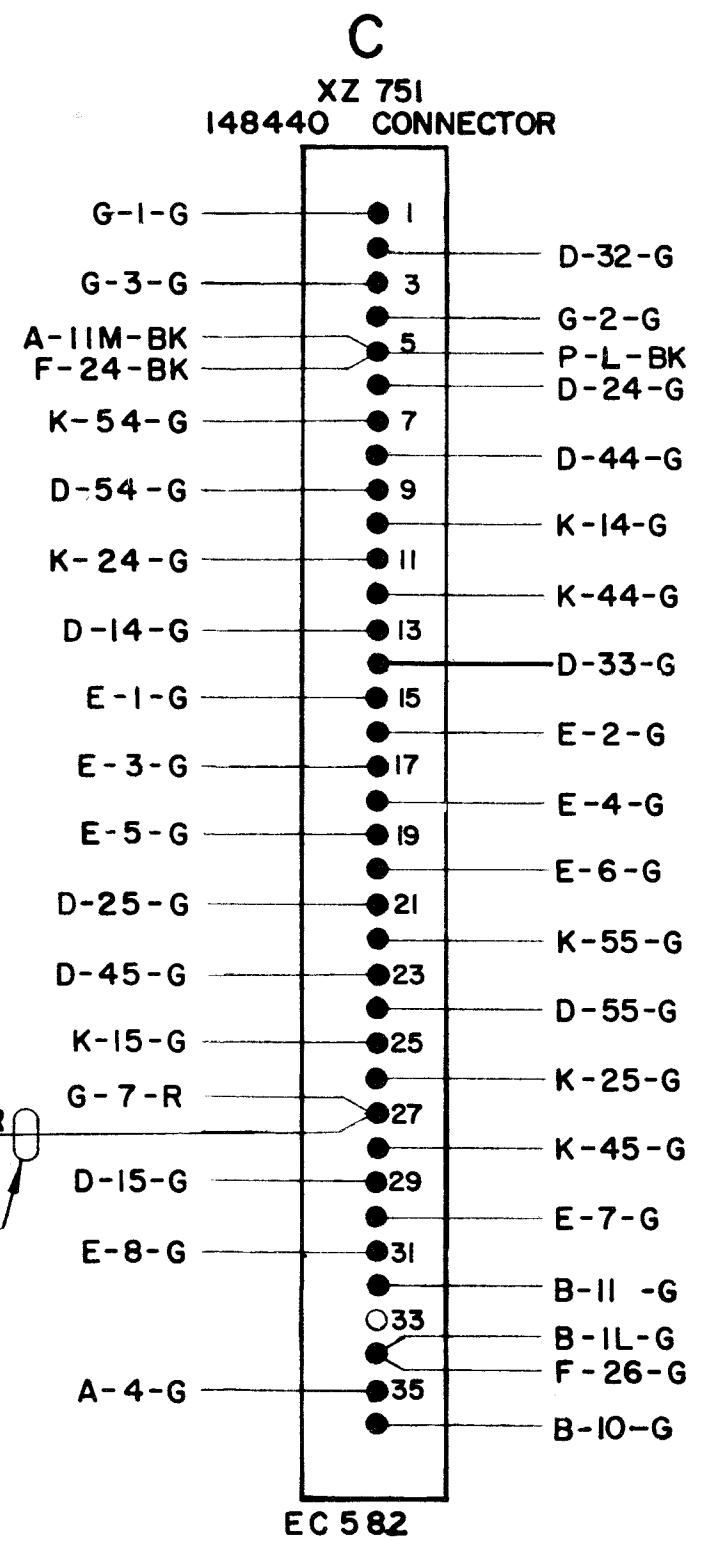
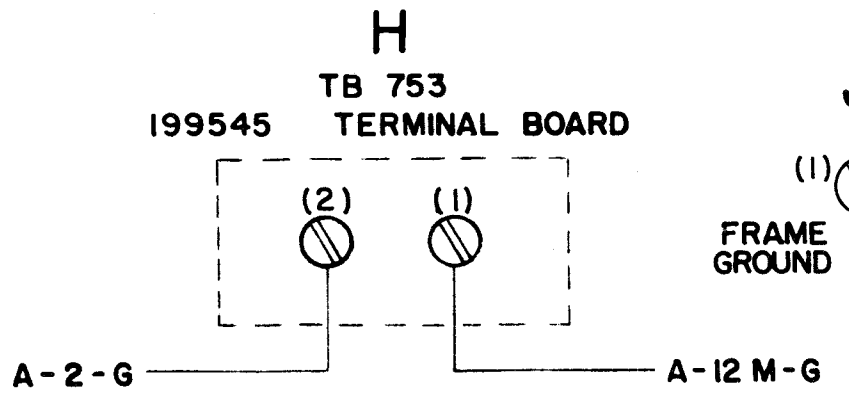
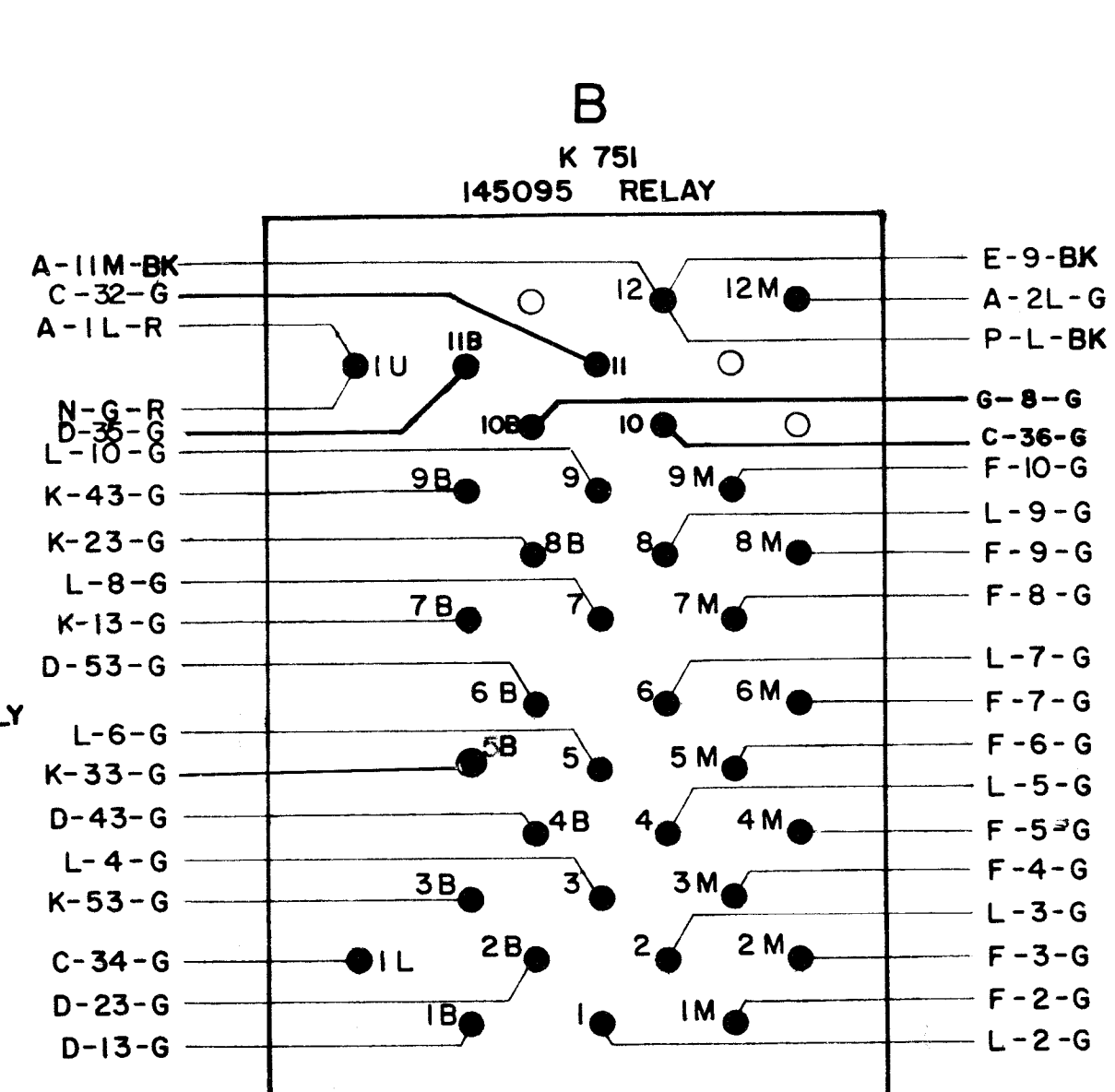
APPROVALS

D AND R	E O P M
<i>[Signature]</i>	<i>[Signature]</i>
E-NUMBER	
PROD. NO. 6444 WD	

DATE: 8-29-63
P.D. FILE NO. 1-A143AA
DRAWN. AHP CHKD. *[Signature]*
ENGD. JHH APPD. *[Signature]*

TELETYPE
CORPORATION
6444 WD

6445 WD		
REVISIONS		
ISSUE	DATE	AUTH. NO.
1	2-3-64	80028
2	4-24-64	81278
3	8-18-64	85081
4	9-29-64	85088
5	10-2-64	84262
6	11-20-64	84989
7	4-26-65	86367
8	5-19-65	87240
9	6-29-65	88013



ACTUAL WIRING DIAGRAM FOR TRANSMITTER CIRCUIT ASSEMBLY	
APPROVALS	
D AND R	E OF M
E-NUMBER	
PROD. NO. 6445 WD	
DATE: 9-5-63	
P.D. FILE NO.: 1-A143 AA	
DRAWN: AHP	CHKD.:
ENGD.: JHH	APPD.:
TELETYPE CORPORATION	
6445 WD	

- NO. NOTES
- WIRING LEGEND:**

— DISTANT TERMINATING AREA
 — DISTANT TERMINATING DESIGNATION
 — WIRE COLOR CODE

R-1-G
 - REFER TO 6442 WD FOR SCHEMATIC WIRING DIAGRAM.
 - TERMINAL DESIGNATIONS IN PARENTHESES () FOR REFERENCE ONLY AND DO NOT APPEAR ON COMPONENTS.
 - ALL SURFACE WIRE 24 AWG GREEN 31784 RM, RED 31788 RM, BLACK 31789 RM, UNLESS OTHERWISE SPECIFIED.
 - STRAPPING MARKED WITH ASTERISK (*) TO BE RED 31788 RM; ALL OTHER STRAPPING TO BE GREEN 31784 RM.
 - COLOR CODE KEY**

O - ORANGE BL - BLUE R - RED
 BK - BLACK G - GREEN
 - 171526 RESISTOR (6 PLS.) ON TB751 BETWEEN A-G B-H, C-I, D-J, E-K, F-L. 1500 OHMS
 - RUBBER STAMP .125 CHARACTERS ON THE CARDS OF THE FOLLOWING RELAYS IN WHITE INK.

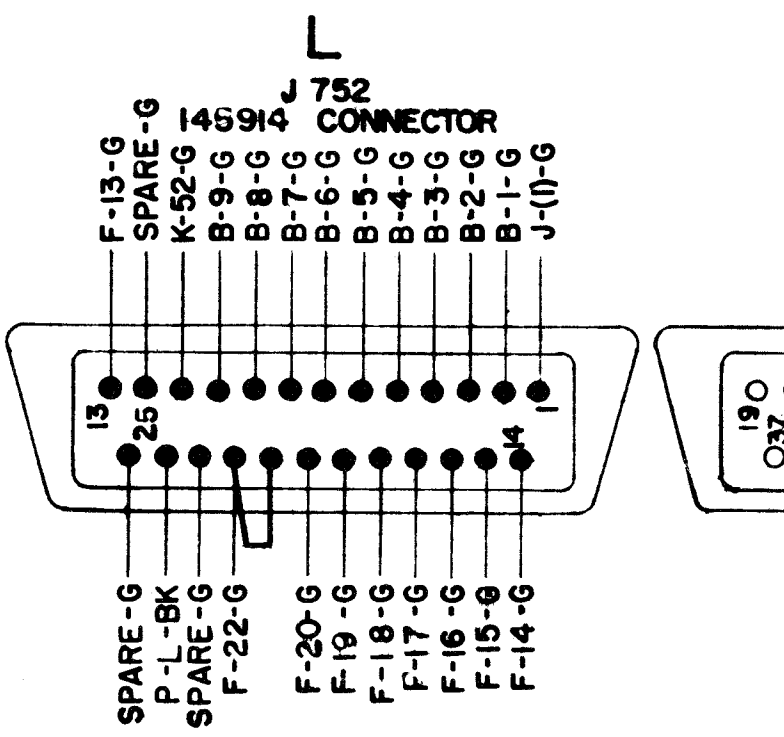
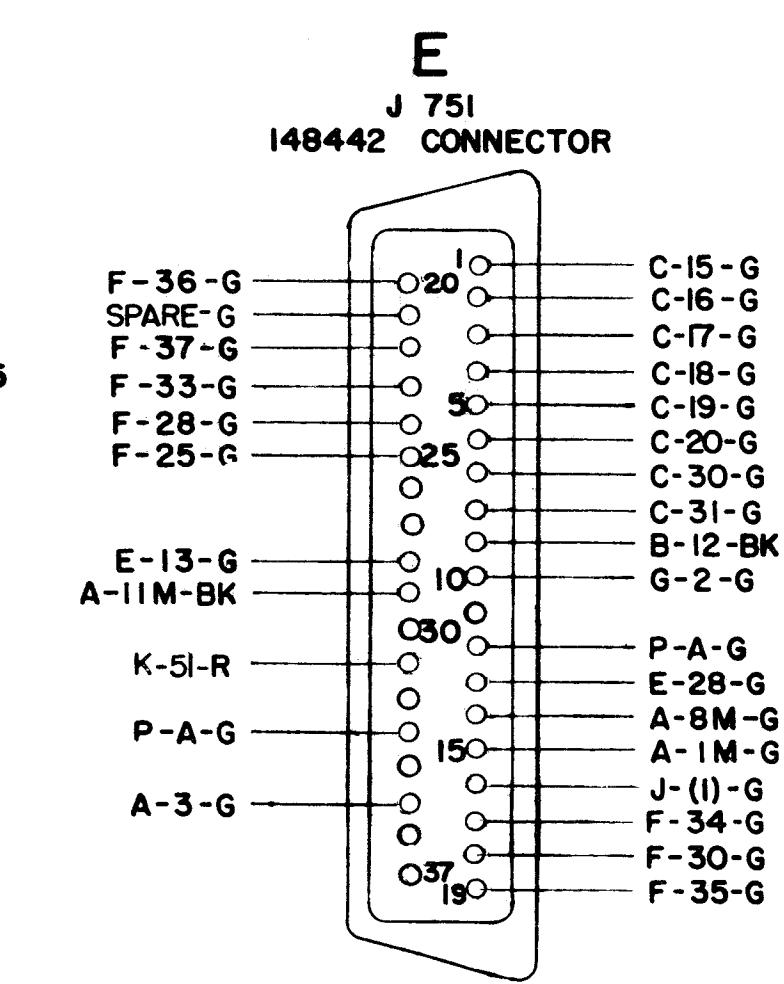
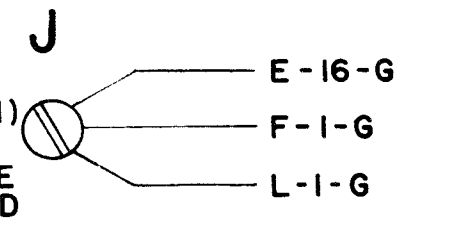
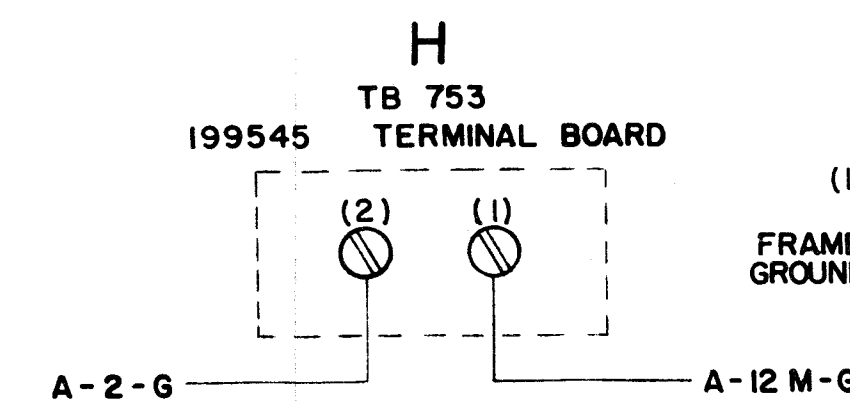
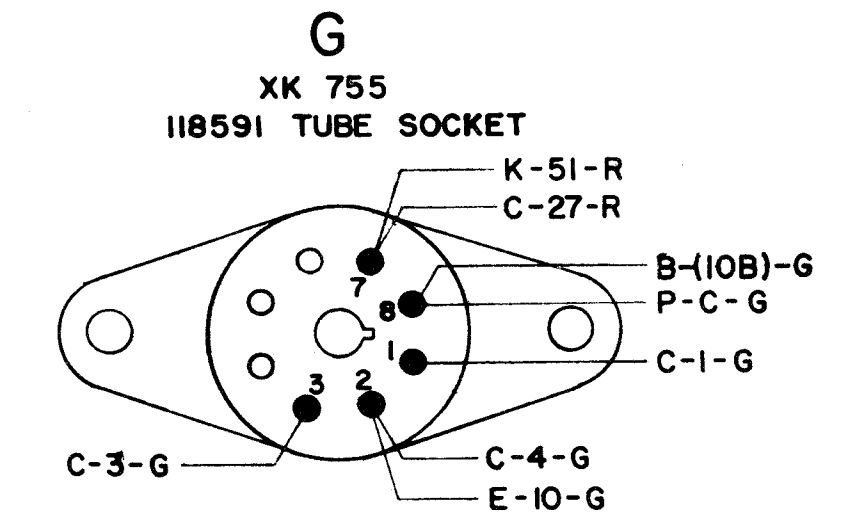
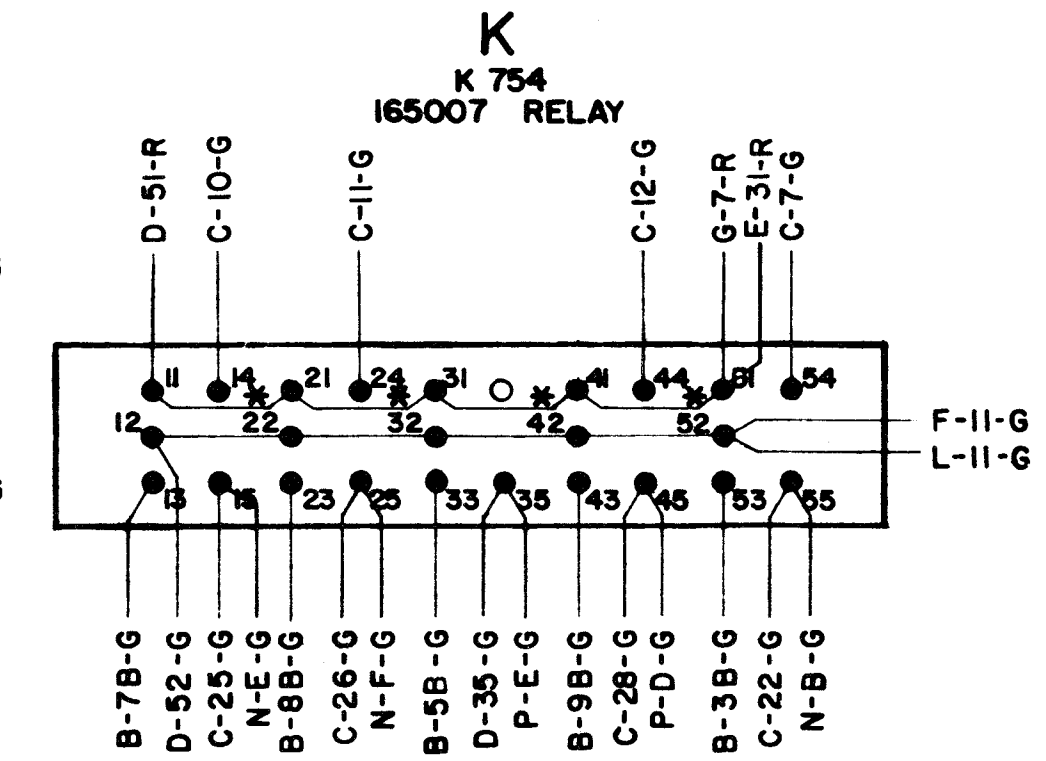
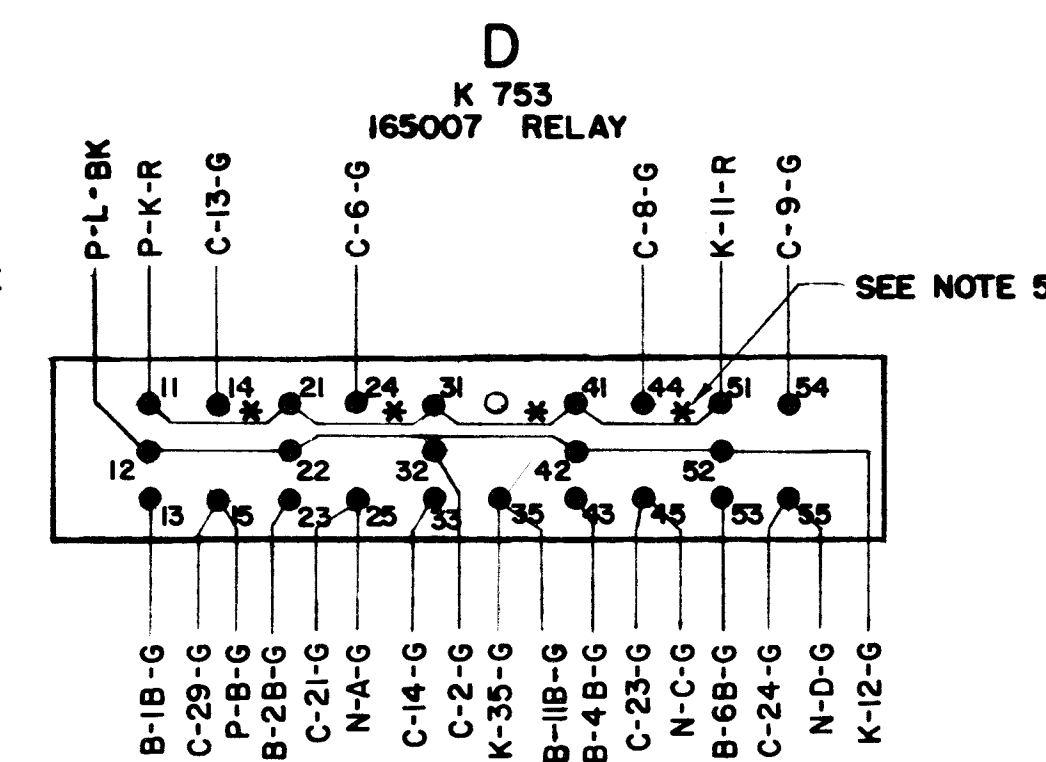
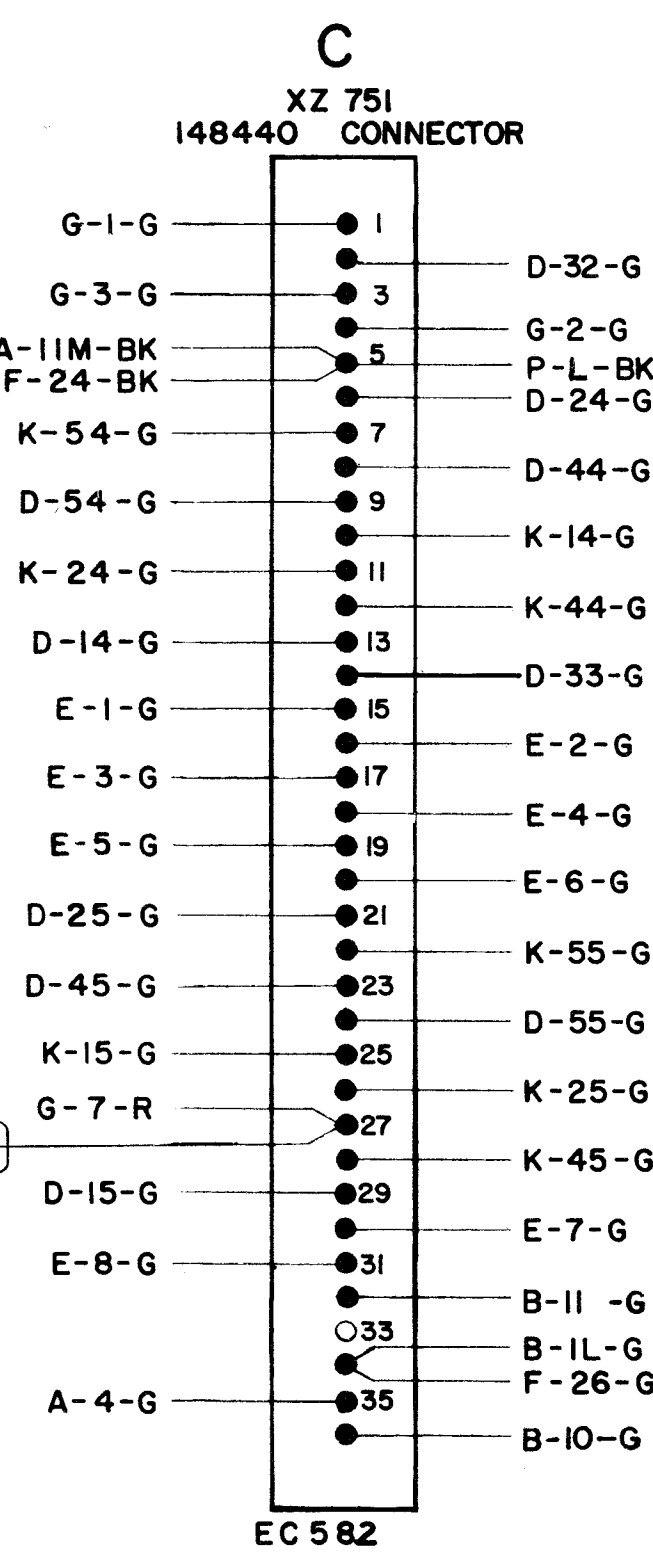
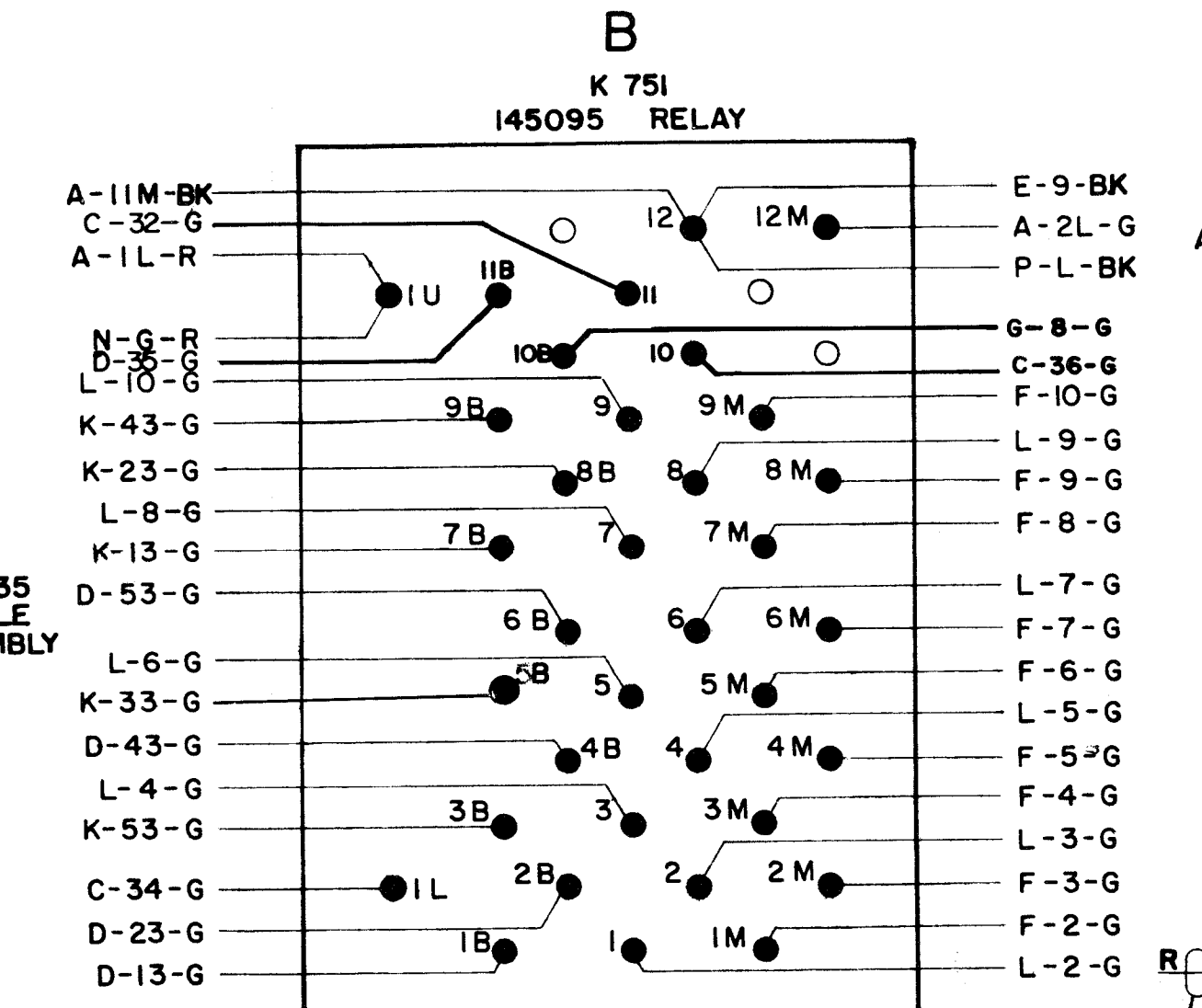
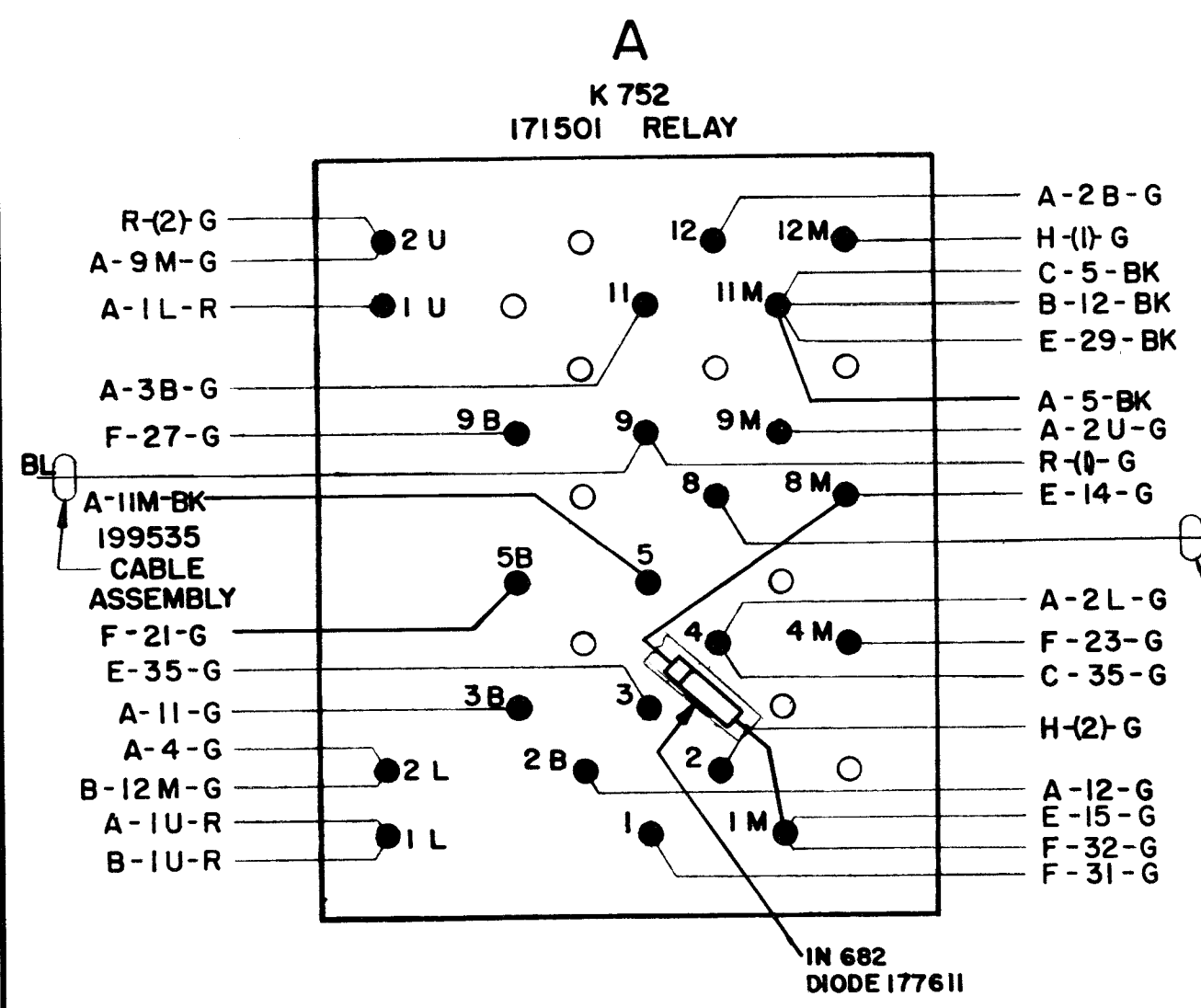
RELAY	STAMPING
K752-U	PD
K752-L	RC

RUBBER STAMP .125 CHARACTERS ON THE CORE PLATE OF THE FOLLOWING RELAY IN BLACK INK.

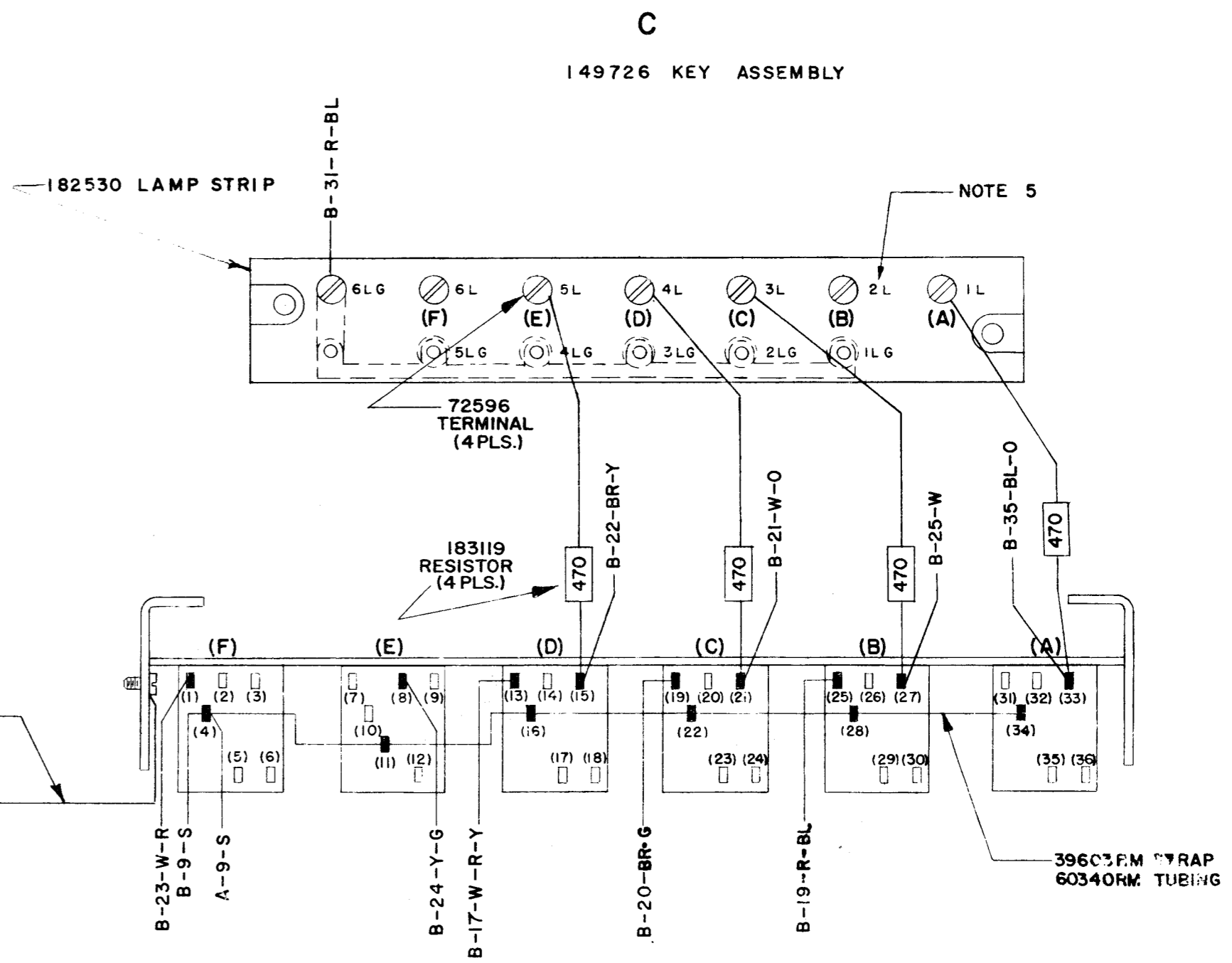
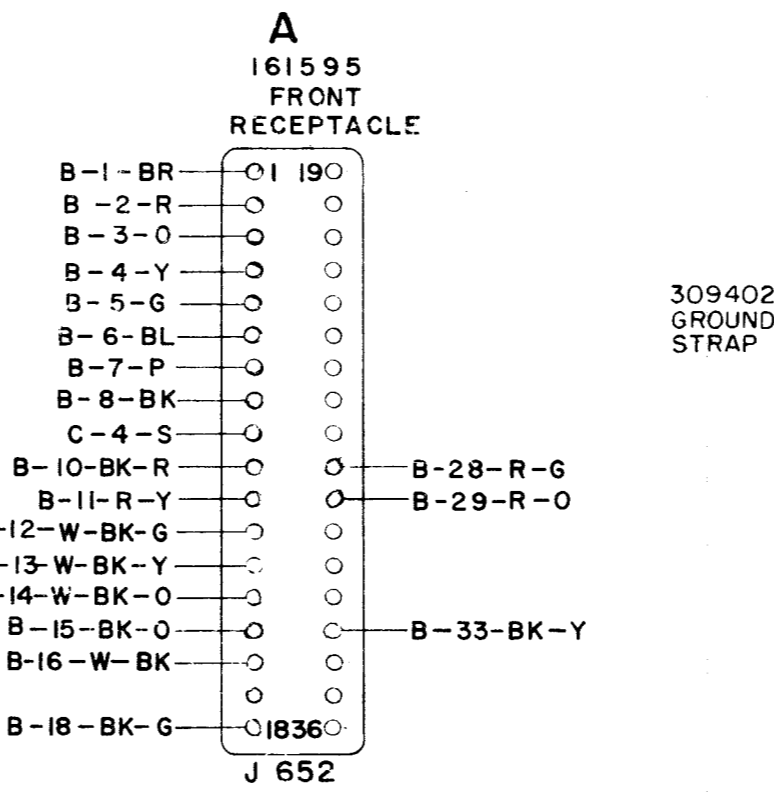
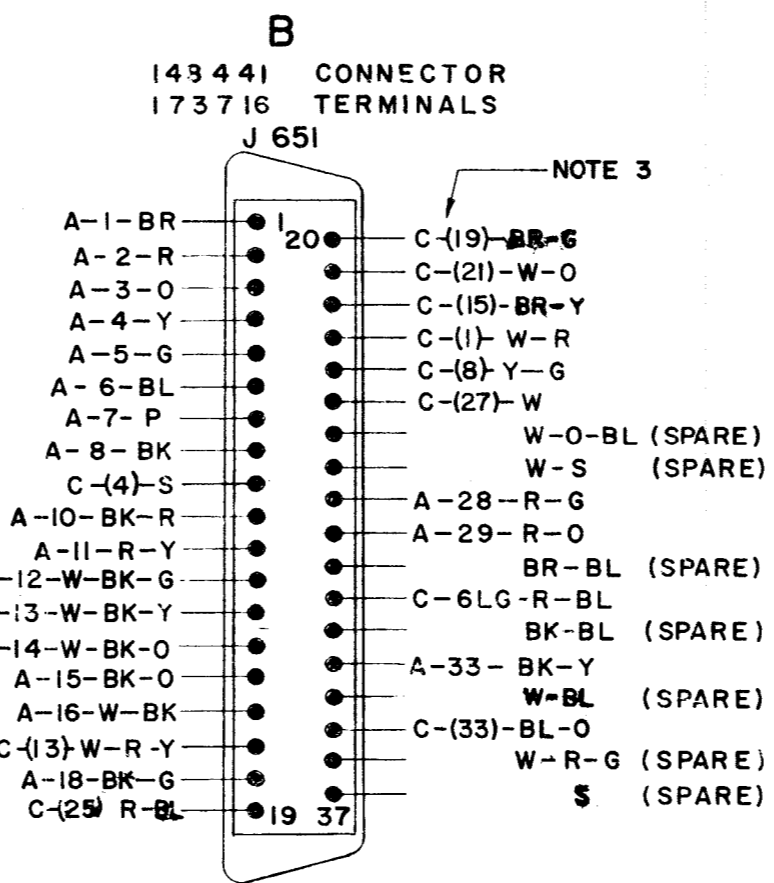
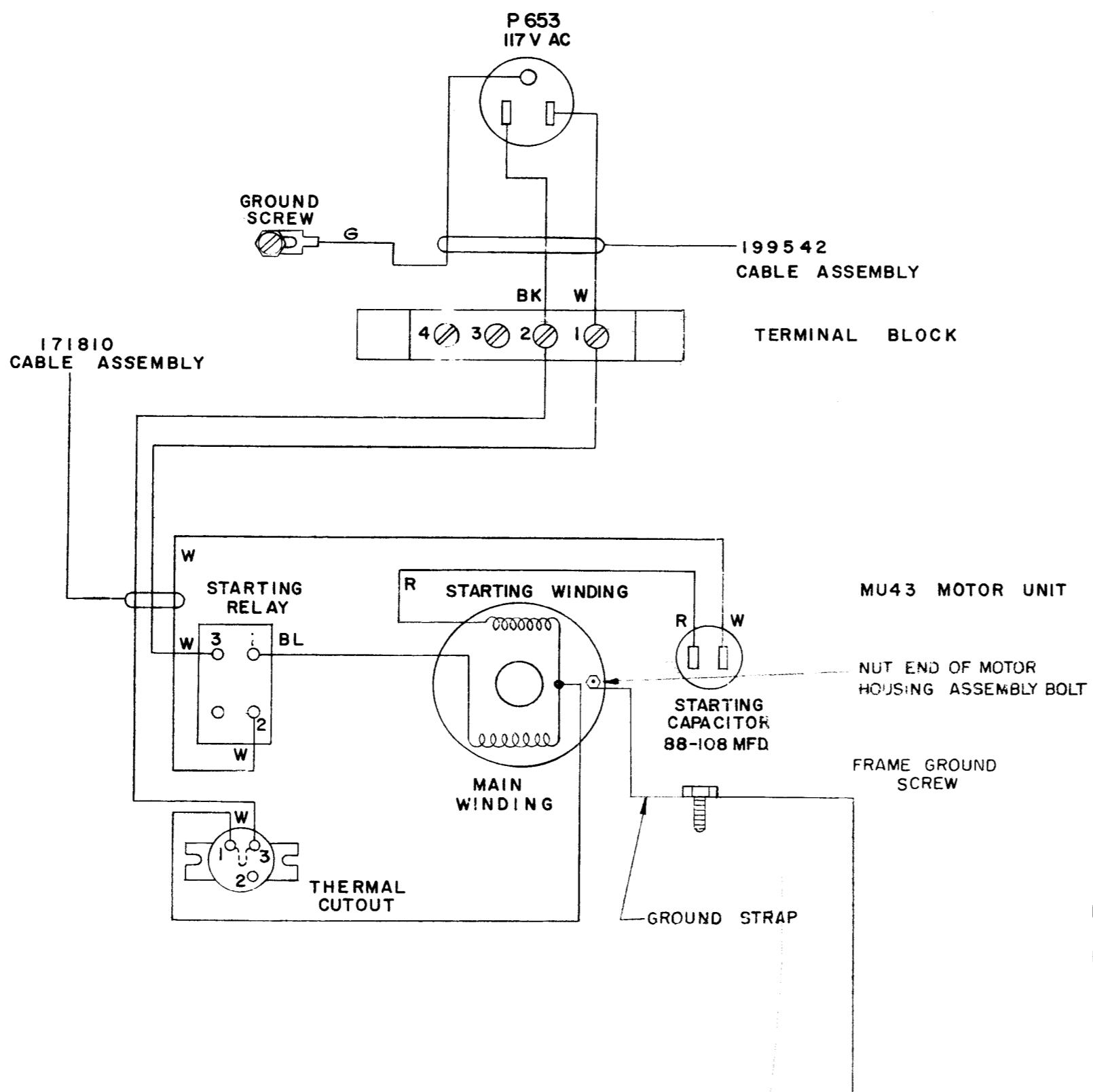
RELAY	STAMPING
K751	AS

RUBBER STAMP .125 CHARACTERS NEAR SOCKET OF THE FOLLOWING RELAY IN BLACK INK.

RELAY	STAMPING
K755	C



- NO NOTES
- 1 WIRING LEGEND:
 DISTANT TERMINATING AREA
 DISTANT TERMINATING DESIGNATION
 WIRE COLOR CODE
 A-1-BR
- 2 TERMINAL DESIGNATIONS IN PARENTHESES () ARE FOR REFERENCE ONLY AND ARE NOT MARKED ON COMPONENTS.
- 3 USE 199548 CABLE ASSEMBLY.
- 4 ALL STRAPPING WIRE 24 AWG BARE 39603 RM; USE SLEEVING 60340RM ON STRAPPING & RESISTOR LEADS. DO NOT PULL WIRE TAUT BETWEEN TERMINALS.
- 5 INSTALL 199549 LAMPS IN AREA C, POSITIONS (A),(B),(C),(D), AND (E).
- 6 WIRE COLOR CODE KEY
 BR - BROWN R - RED O - ORANGE
 Y - YELLOW G - GREEN BL - BLUE S - SLATE
 P - PURPLE BK - BLACK R-Y - RED YELLOW
 W - WHITE BK-R - BLACK RED R-BL - RED BLUE
 W-S - WHITE SLATE R-G - RED GREEN
 BK-BL - BLACK BLUE BR-BL - BROWN BLUE
 BK-Y - BLACK YELLOW W-BL - WHITE BLUE
 BL-O - BLUE ORANGE Y-G - YELLOW GREEN
 BR-G - BROWN GREEN BK-G - BLACK GREEN
 W-R - WHITE RED W-R-G - WHITE RED GREEN
 W-BK - WHITE BLACK BK-O - BLACK ORANGE
 W-O-BL - WHITE ORANGE BLUE
 W-BK-G - WHITE BLACK GREEN
 W-BK-O - WHITE BLACK ORANGE



6446 WD

REVISIONS		
ISSUE	DATE	AUTH. NO.
2	4-24-64	87276
3	8-5-64	87277
4	9-18-64	83480
5	10-26-64	82008-1
6	11-16-64	84950
7	2-26-65	85946
8	4-10-65	86361
9	6-29-65	87244

ACTUAL WIRING DIAGRAM FOR CXB200 & MU43 MOTOR UNIT

APPROVALS

DESIGNED	BY	DATE
CHECKED	BY	DATE
APP'D	BY	DATE

PROJ. NO. 6446 WD

DATE 8-30-63

P.D. FILE NO. I-A:43AA

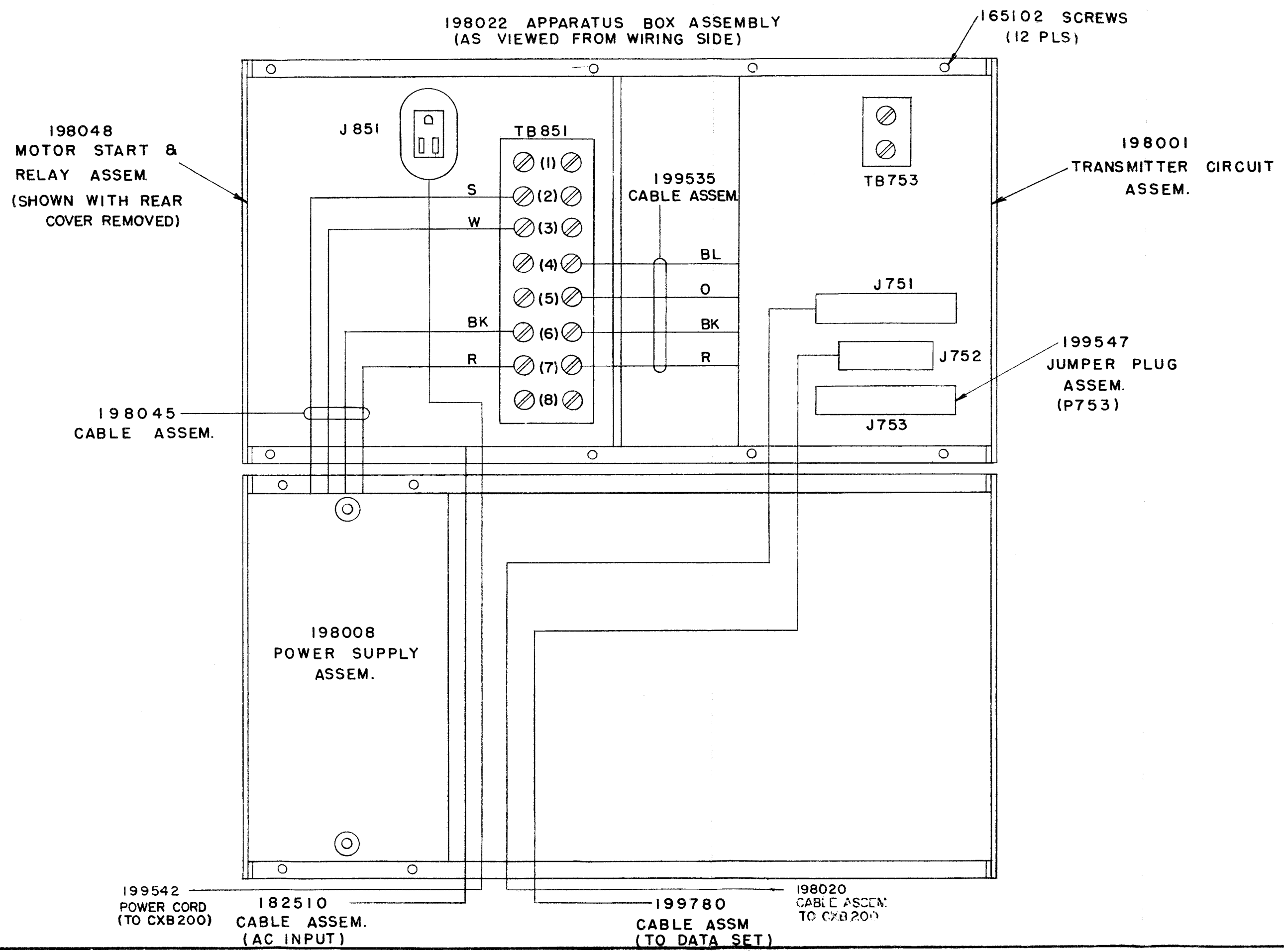
DRAWN GJM. CHKD. JHM.

ENGD. JHM. APP'D. JHM.

TELETYPE CORPORATION

6446 WD

- NO. NOTES
- REFER TO 6442 WD FOR ASSOCIATED SCHEMATIC.
 - TERMINAL DESIGNATIONS ENCLOSED IN PARENTHESIS () ARE FOR REFERENCE ONLY AND NOT MARKED ON COMPONENT.



6447 WD

REVISIONS		
ISSUE	DATE	AUTH. NO.
2	2-26-65	86356

ACTUAL WIRING
DIAGRAM
TYPE 5 DATA-
SPEED SENDER
(VS 227)

APPROVALS

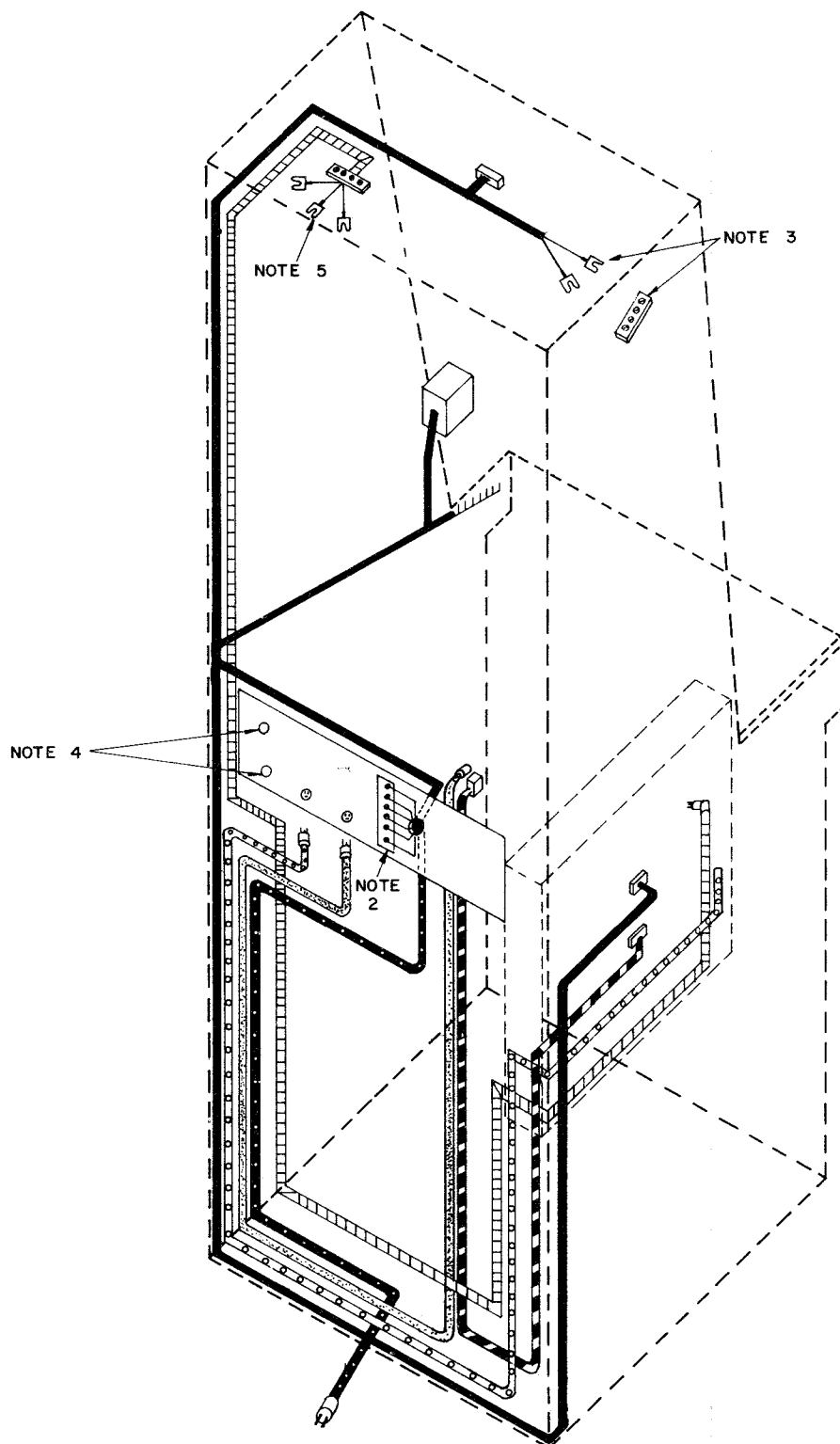
D AND R	E OF M
<i>[Signature]</i>	<i>[Signature]</i>
E- NUMBER	
PROD. NO. 6447WD	
DATE: 9-11-63	
P.D. FILE NO. 1-A148AA	
DRAWN G.J.M.	CHKD. <i>[Signature]</i>
ENGD. J.H.H.	APPD. <i>[Signature]</i>
TELETYPE CORPORATION	
6447 WD	

710I WD

REVISIONS

ISSUE	DATE	AUTH. NO.

NO.	NOTES
1.	COLOR CODE BK - BLACK G - GREEN W - WHITE R - RED O - ORANGE
2.	CONNECT BK TO TERMINAL 6 O TO TERMINAL 4 R TO TERMINAL 3 W TO TERMINAL 2
3.	CONNECT W TO TERMINAL 1 BK TO TERMINAL 2
4.	HOLES PROVIDED FOR WESTERN ELECTRIC 44A TERMINAL BOARD.
5.	G TO FRAME GROUND W TO TERMINAL 1 BK TO TERMINAL 2



CABLE LEGEND

	148564
	199780
	DATA SET POWER CORD
	199542
	182510
	182510

CABLE DIAGRAM FOR
TYPE 5 DATA SPEED
SENDER CABINET
VS229

APPROVALS

D. AND R. <i>[Signature]</i>	E OF M <i>[Signature]</i>
---------------------------------	------------------------------

E - NUMBER

PROD. NO. 710IWD

DATE 12-14-63

P.D. FILE NO. I-A143AA

DRAWN G.R.S. CHKD.

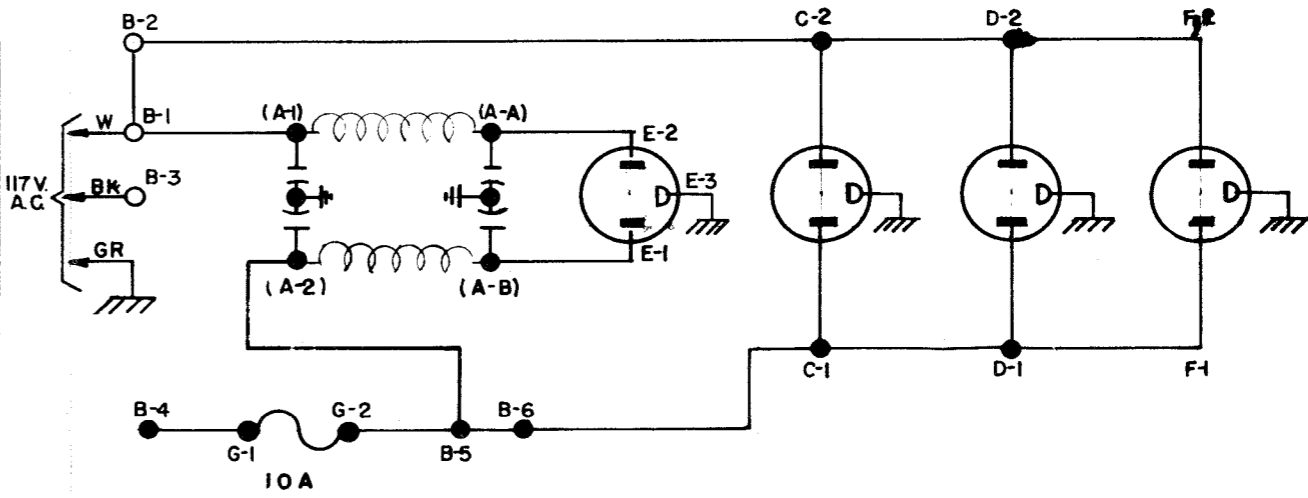
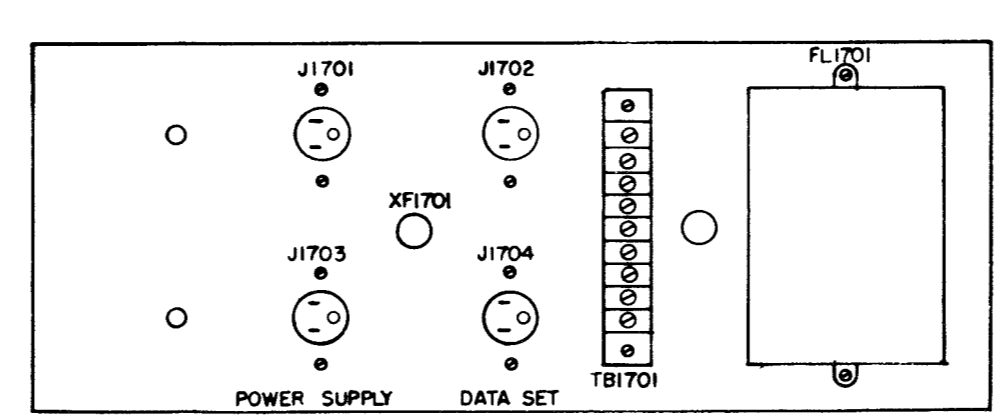
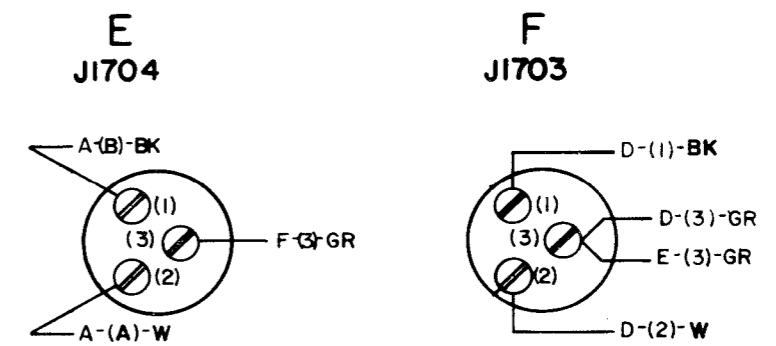
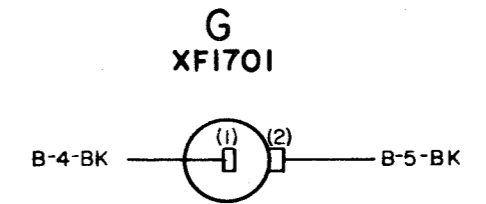
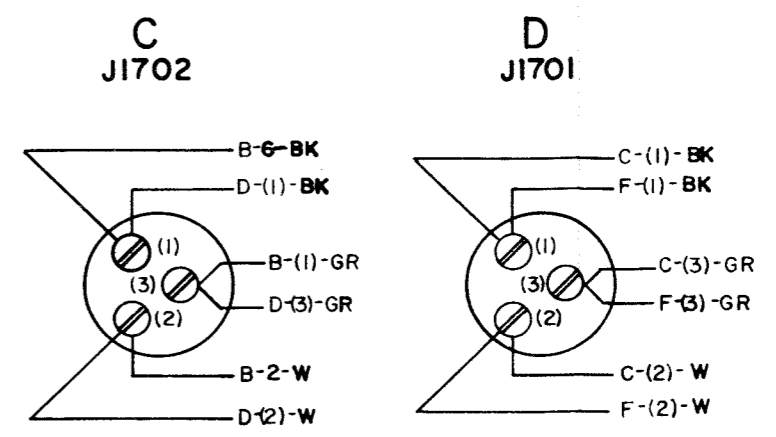
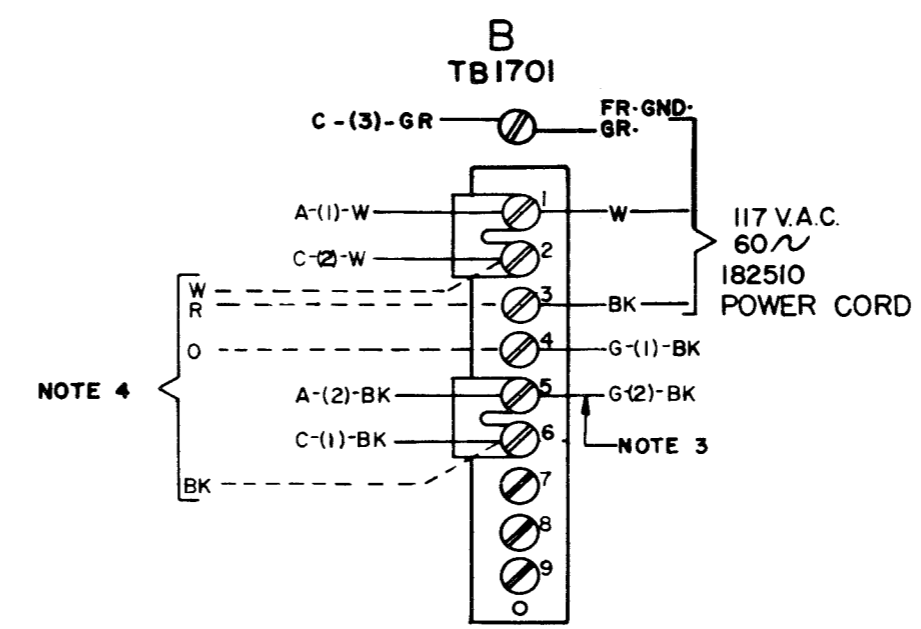
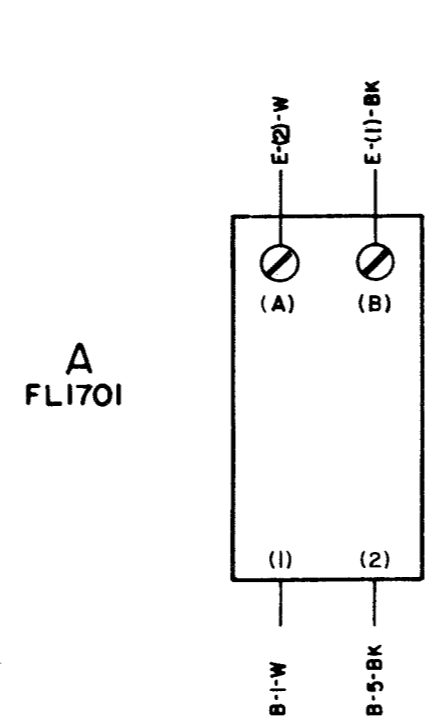
ENGD. R.C.H. APPD. *[Signature]*

TELETYPE
CORPORATION

710I WD

ISSUE	DATE	AUTH. NO.
2	9-28-64	83084
3	10-7-64	84000

- NO. NOTES.
1. WIRING LEGEND
 - DISTANT TERMINATING AREA
 - DISTANT TERMINATING DESIGNATION
 - WIRE COLOR CODE
 R-12-BL
 2. TERMINAL DESIGNATIONS ENCLOSED IN PARENTHESES ARE NOT MARKED ON THE COMPONENT
 3. 148574 CABLE ASSEMBLY
 4. 148563 FOR AC 356 OR 148564 FOR AC 364



ACTUAL WIRING DIAGRAM FOR ELECTRICAL SERVICE PANEL ASSEM NO. 148562

APPROVALS

D AND R E OF M

E-NUMBER
 PROD. NO. 7103WD

DATE: 11-16-63
 P.D. FILE NO. 1-A143AA

DRAWN G.R.S. CHKD
 ENGD. R.C.H. APPD. R.C.H.

TELETYPE CORPORATION