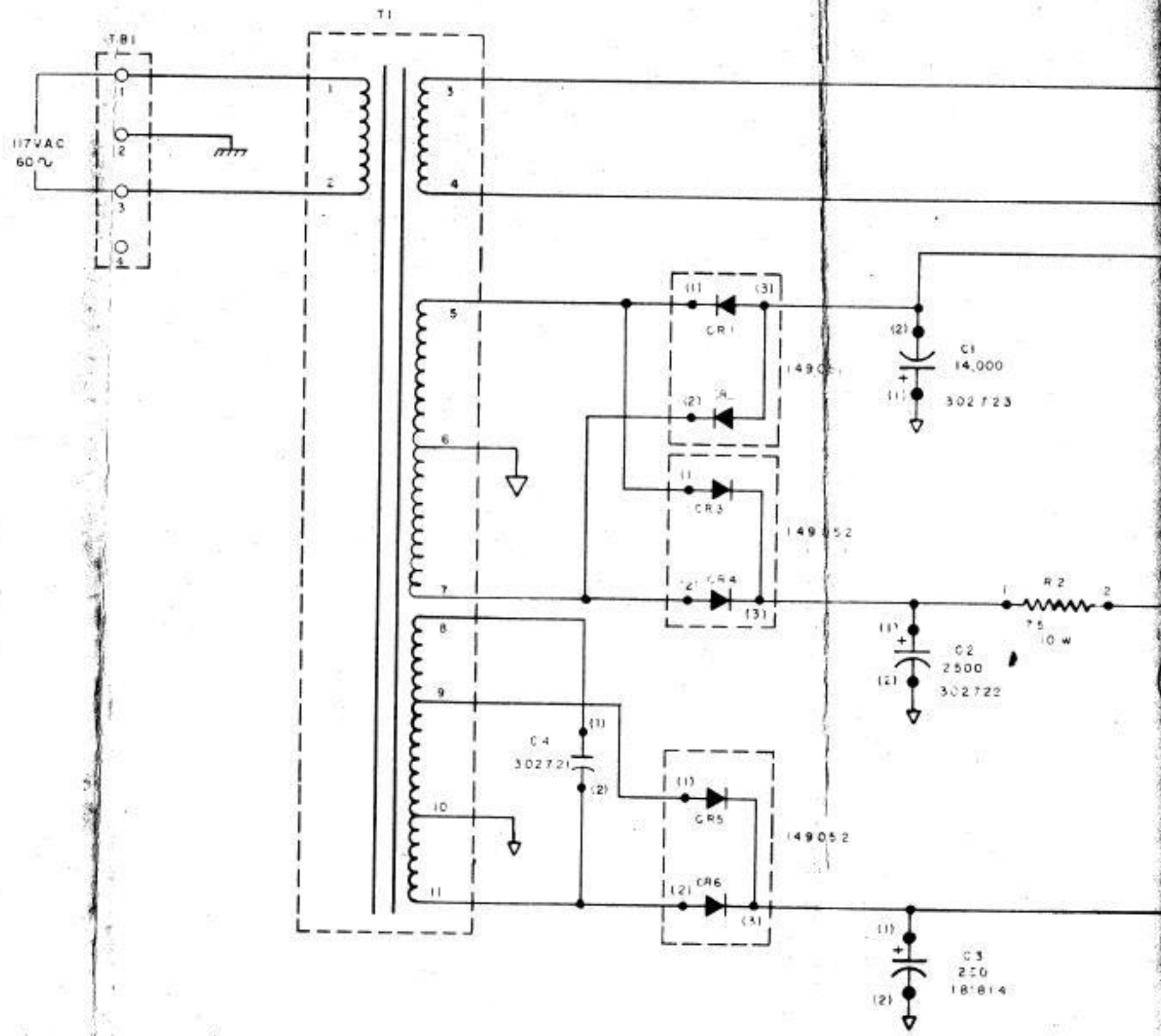
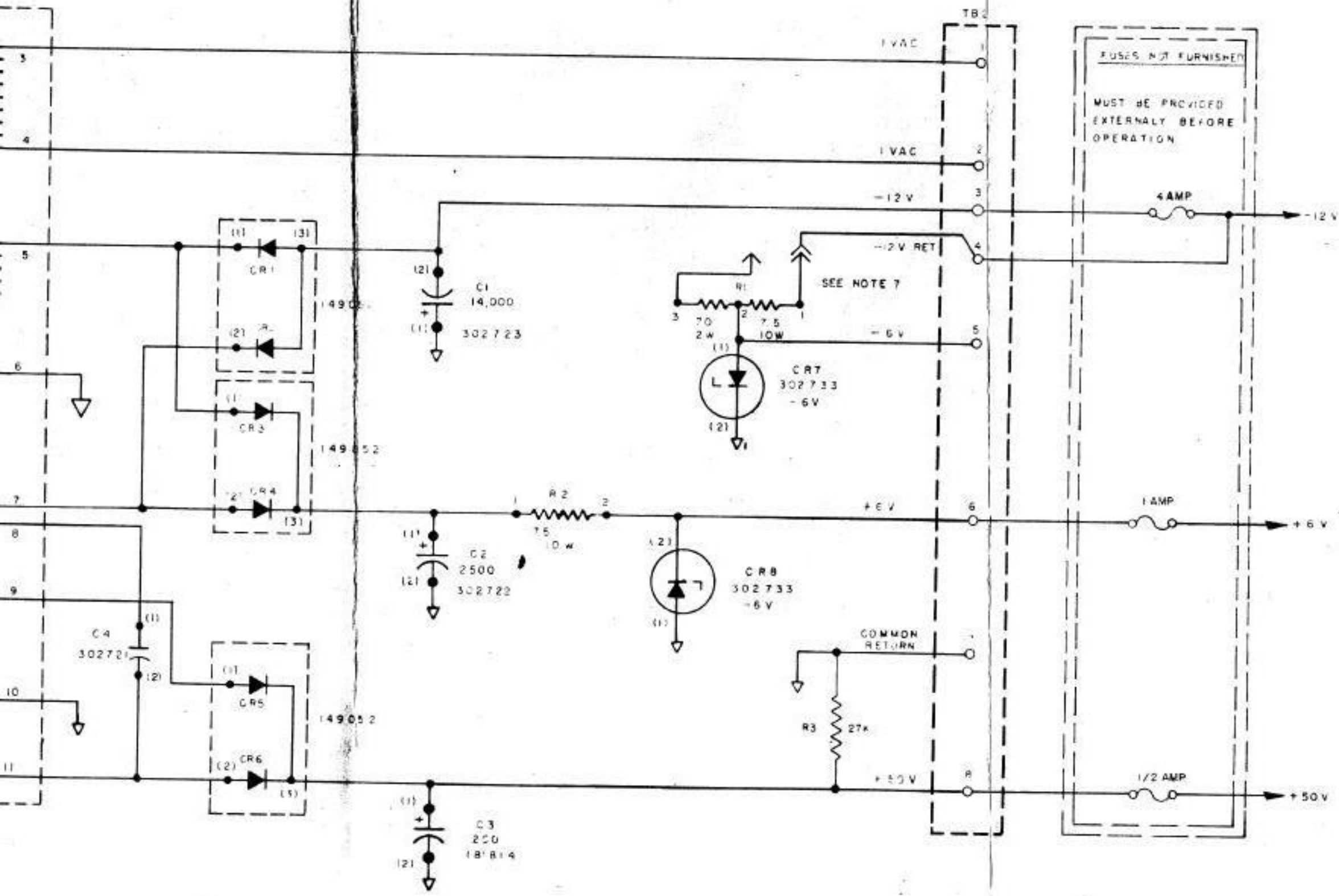


NO.	NOTES
1	ALL VOLTAGES DC UNLESS OTHERWISE SPECIFIED
2	TERMINAL DESIGNATIONS ENCLOSED IN PARENTHESES ARE FOR REFERENCE AND NOT MARKED ON COMPONENT
3	ALL RESISTORS 1/2 WATT AND RESISTANCE VALUE IN OHMS UNLESS OTHERWISE SPECIFIED
4	ALL CAPACITANCE VALUES IN MICROFARADS UNLESS OTHERWISE SPECIFIED
5	REFER TO SPECIFICATION 608275 TO DETERMINE PROPER VALUE REQUIRED
6	→ INDICATES MALE TERMINALS ON RESISTOR R1
7	⤴ INDICATES FEMALE TERMINALS
8	REFER TO T059 WD FOR ACTUAL WIRING DIAGRAM



WD

REVISIONS			
ISSUE	DATE	AUTH	NO



SPEC NO. 608275

SCHEMATIC WIRING  
DIAGRAM FOR  
MULTI-VOLTAGE  
POWER  
SUPPLY

ASSEM NO. 302720

APPROVALS

D AND R	E OF M
---------	--------

E - NUMBER

PROD. NO. 7058WD

DATE 3-18-64

P.D. FILE NO2-96134184A

DRAWN GJM APPD *[Signature]*

ENGD. F.K.H. CHKD.

**TELETYPE  
CORPORATION**

WD