

ADJUSTMENTS OF TICKER SELECTOR MAGNET UNIT  
WITH "T" SHAPED ARMATURE

To be used in conjunction with Bulletin 137 -  
Description and Adjustments of the  
Typewheel Tape Printer (Ticker).

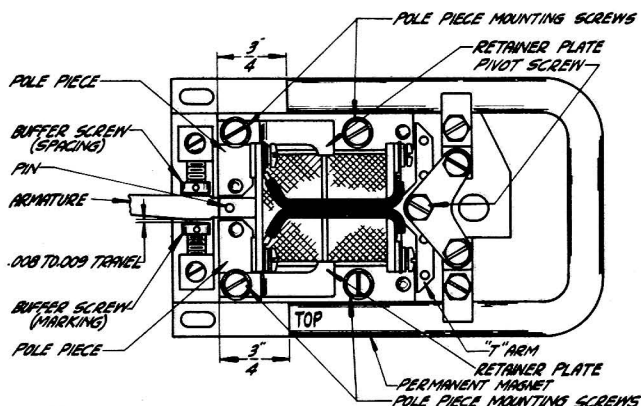
Page 12.

Cancel: SELECTOR ARMATURE PIVOT SCREWS ADJUSTMENT.  
SELECTOR ARMATURE POLE PIECES AND BUFFER SCREWS ADJUSTMENT, FIG. 7.

and substitute the following:

SELECTOR ARMATURE PIVOT SCREWS ADJUSTMENT:-Remove permanent magnet and back off armature buffer screws. Adjust the "up" and "down" position of the armature, by means of its pivot screws, so that the top surface of the armature is flush with the top surfaces of the right ends of the pole pieces, and so that the armature is free, without end play. Replace permanent magnet so that the mark "TOP" is uppermost.

PERMANENT MAGNET ADJUSTMENT:-Adjust the position of the permanent magnet so that the ends of the magnet are approximately  $\frac{3}{4}$ " from the left ends of the pole pieces (See figure).



POLE PIECES ADJUSTMENT:-Loosen pole piece mounting screws. Move one pole piece as far toward the buffer screws as possible, holding it against the permanent magnet, and tighten the mounting screws just enough to hold the pole piece in this position. Hold the armature against this pole piece at the left end and adjust the other pole piece so that it just touches the "T" arm of the armature. Make sure that this pole piece is against the permanent magnet and tighten the mounting screws. Now hold the left end of the armature against this pole piece and adjust the other pole piece so that it just touches the "T" arm of the armature. Make sure that this pole piece is against the permanent magnet and tighten the mounting screws.

Note:-When tightening the left hand pole piece mounting screws hold the selector coil retainer plates so that the selector coils are held securely between the retainers.

BUFFER SCREWS ADJUSTMENT:- (A) Insert a .020" gauge between the left end of one pole piece and the armature. Hold the armature against the gauge and adjust the buffer screws so that there is from .004" to .005" space between each buffer screw and the side of the armature. Remove the .020" gauge. (B) Place the selector armature on the spacing side, hook an 8 oz. scale over the pin on the armature and pull at right angles toward the front of the printer. Observe the tension required to pull the armature to the marking side. Now hook the scale over the pin and pull at right angles toward the rear of the printer. Observe the tension required to pull the armature to the spacing side. If the two tensions are not within one ounce of being equal, refine the buffer screws adjustment. This adjustment should be made so that the armature will have from .008" to .009" travel between the buffer

(over)

screws (See figure).

Page 13.

MAGNET BASE POSITION, FIG. 8 - change to read: "from .003" to .005" instead of "from .002" to .004".

Insert after MAGNET BASE POSITION, FIG. 8.

After tightening base mounting screws recheck BUFFER SCREWS ADJUSTMENT, item (B). If it is necessary to change the adjustment of the buffer screws recheck MAGNET BASE POSITION.