

FIG. 6
POWER CONNECTIONS WITHOUT SWITCH CONTROL
(15 TTY 15N TABLE)

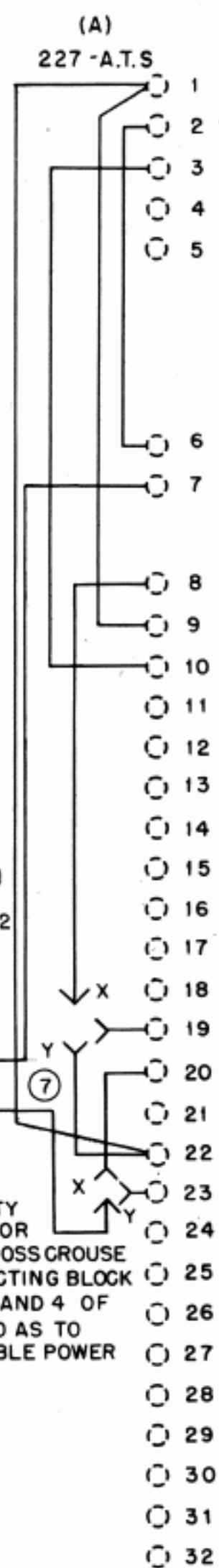
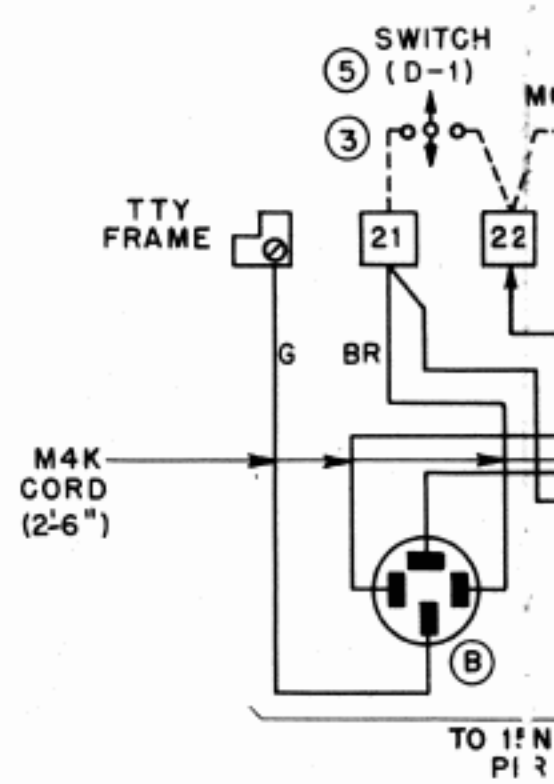
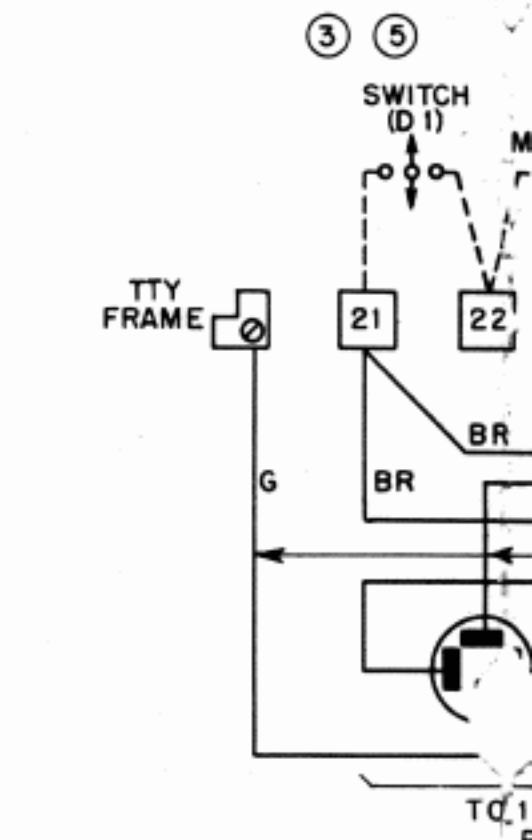
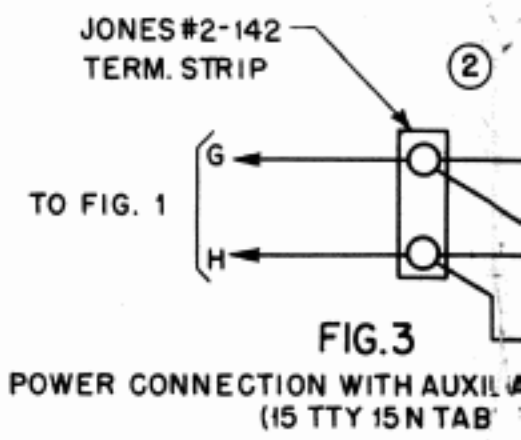
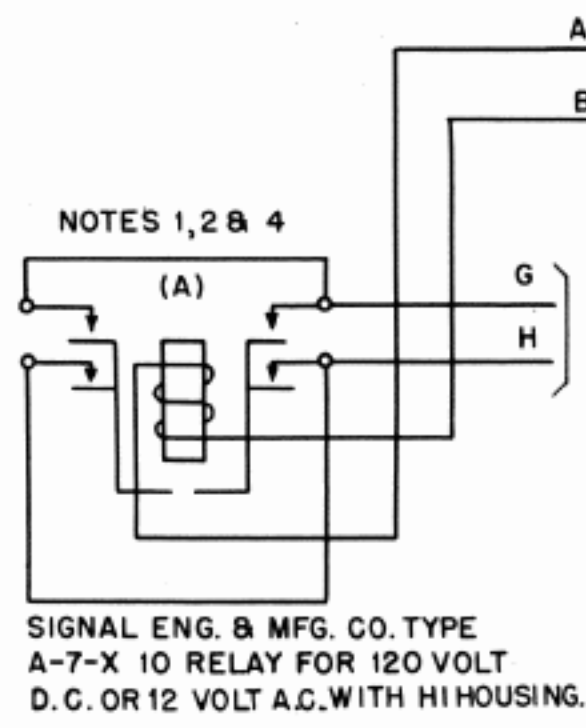


FIG. 2
DOTTED PORTION
OF THIS FIGURE
SHOWN ON NP90.982



NOTES 1, 2 & 4

(A)

G

H

SIGNAL ENG. & MFG. CO. TYPE
A-7-X 10 RELAY FOR 120 VOLT
D.C. OR 12 VOLT A.C. WITH HI HOUSING.

TO FIG. 3 OR
FIG. 6 FOR 15 TTY
ON 15N TABLE OR
CONNECT ACROSS GROUSE
HINDS CONNECTING BLOCK
TERMINALS 2 AND 4 OF
19A TABLE SO AS TO
PARALLEL TABLE POWER
SWITCH.

FIG. 1

POWER CO

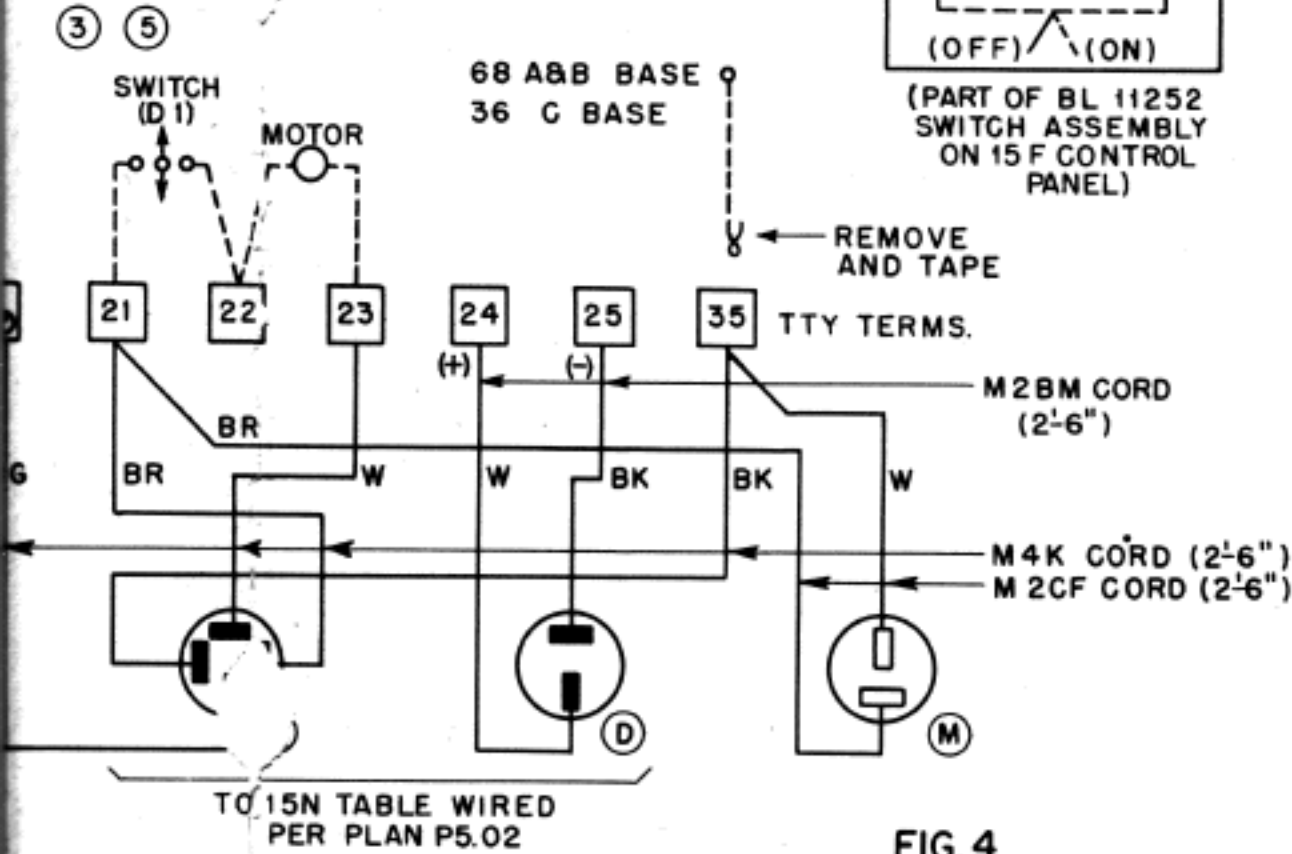
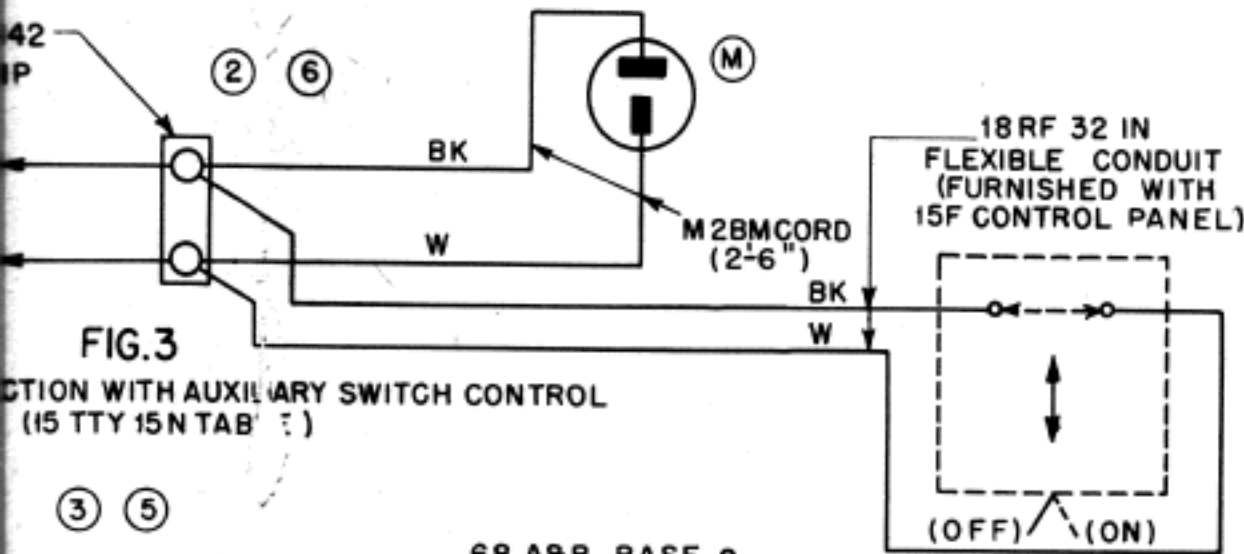


FIG. 4 POWER CONNECTIONS FOR A.C. POWER SUPPLY

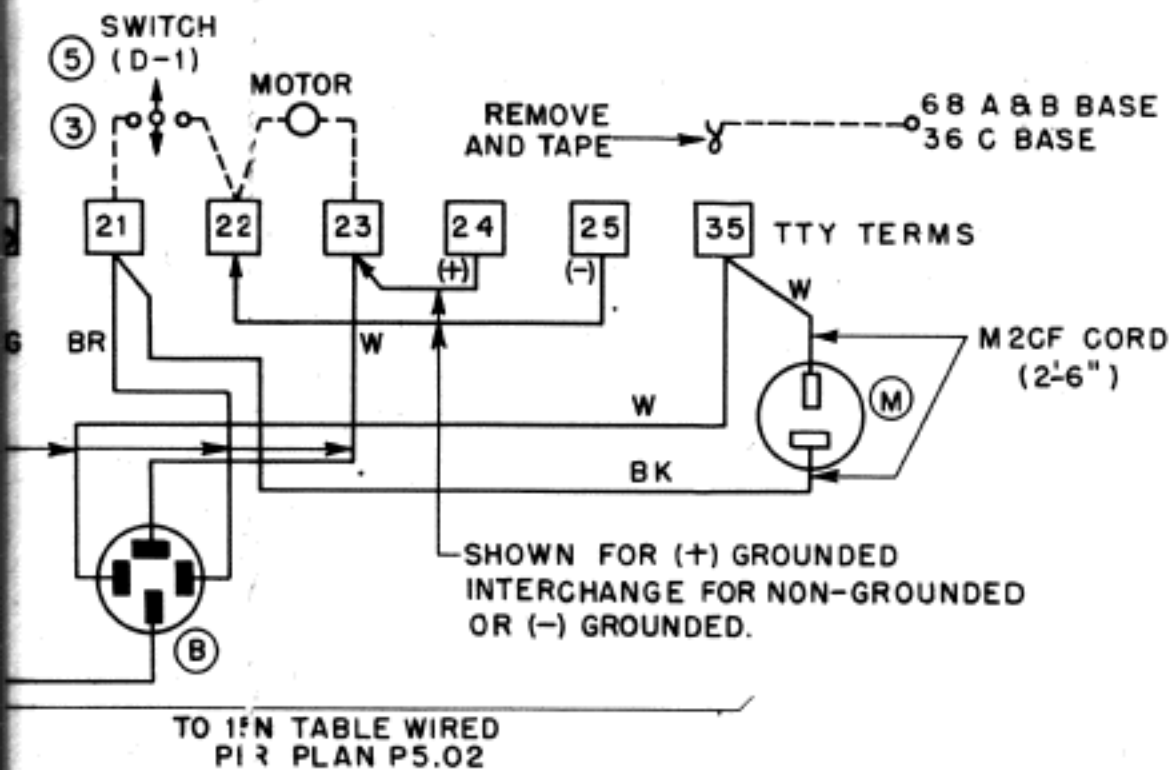


FIG. 5 POWER CONNECTIONS FOR D.C. POWER SUPPLY

NOTES

1. ADJUST PER B.S.P P31.911.
2. WIRE ACCORDING TO UNDERWRITERS RULES
3. POWER SWITCH ON TTY BASE TO BE OPERATIVE.
4. MOUNT RELAY PER PLAN SA 9.01 FOR 19A TABLE DISREGARDING REFERENCE TO PLAN P.M. 9.13 OR ON INSIDE OF REAR PANEL FOR 15N TABLE.
5. KEEP POWER SWITCH IN CLOSED POSITION EXCEPT WHEN REQUIRED TO STOP TTY TO CHANGE PAPER OR OTHER NECESSARY OPERATION.
6. MOUNT ON INSIDE OF 15 N TABLE.
7. USE X WIRING FOR A.C. POWER AND Y WIRING FOR D.C. SUPPLY.
8. SELECTIVE RECEIVING CIRCUIT (B.S.P P90.982) MUST HAVE U-783 RELAYS IN POSITIONS (A), (B) & (G) & 18 EW RESISTANCES IN POSITIONS (A), (B) & (P).

64-C-1 SELECTOR SYSTEM

APPLIQUE CIRCUIT TO PERMIT REMOTE POWER CONTROL OF A 15 TTY ON 15N TABLE OR 19ASR TTY WHEN USED WITH ARRANGEMENT SHOWN ON (BSP P90.982)