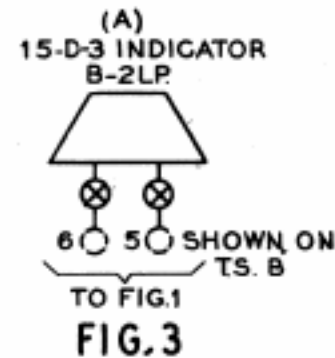
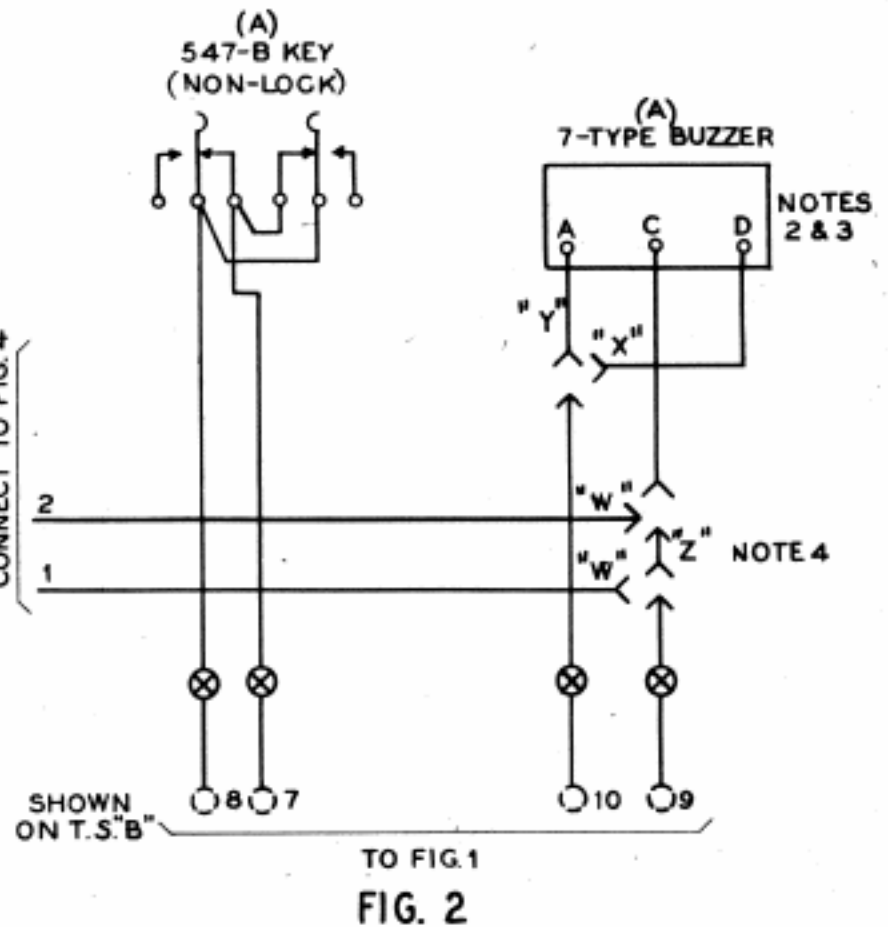
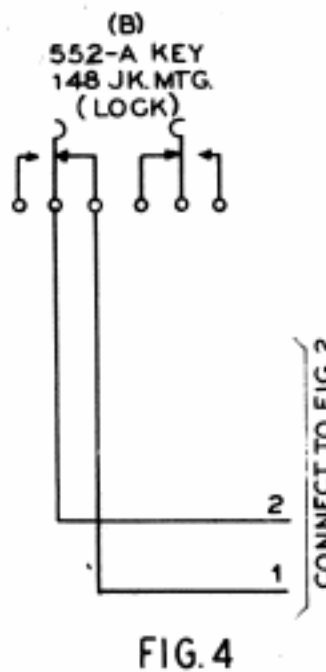
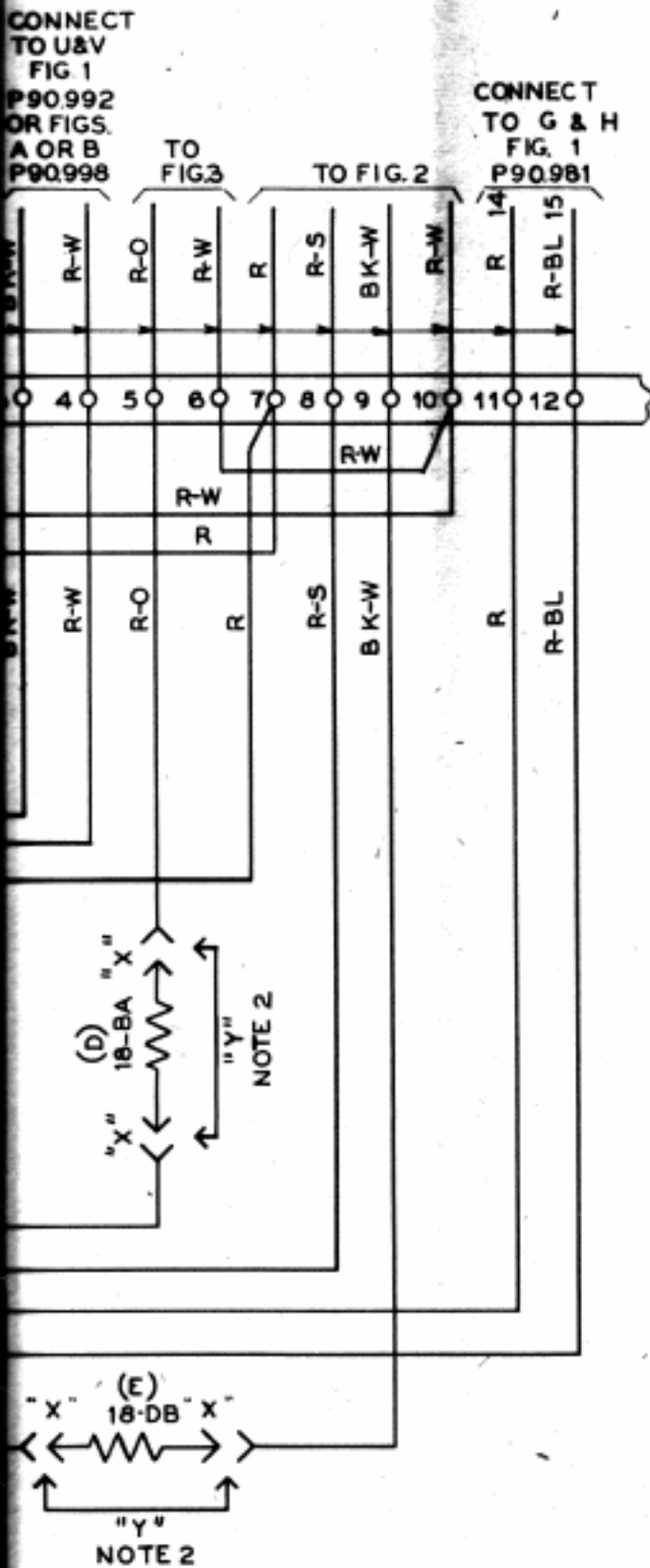


FIG. 1

Dist. Class. 600AC



- NOTES
- ① REPRODUCED FROM DWG. 21140-T-131
 - ② USE "X" WIRING AND APPARATUS FOR D.C. POWER OPERATION AND "Y" WIRING FOR A.C. POWER OPERATION.
 - ③ USE 7-E BUZZER FOR 60~A.C., 7-A FOR 25~A.C., AND 7-F FOR D.C.
 - ④ USE "W" WIRING IF KEY (B) IS REQUIRED, OTHERWISE USE "Z" WIRING.
 - ⊗ H.B. JONES NO. 10-141 TERM. STRIP OR EQUIVALENT ON TTY. TABLE.
 - ⑤ USE 59D (115^Ω) RESISTANCES FOR FIG. 7 OF BSP P90.983 WHEN THAT FIGURE IS USED.
 - ⑥ WIRING NOT OTHERWISE SPECIFIED TO BE 22C.
 - ⑦ SCHEMATIC SHOWN ON P90.973 EQUIPMENT SHOWN ON 21140-ED-131

64-C-1 SELECTOR SYSTEM
APPLIQUE CIRCUIT TO PERMIT
DISCONNECTION & CONNECTION
OF TTY. DISABLES
ASSOCIATED CALLING ARRANGEMENT
PER P90.981 WHEN TTY IS DISCONNECTED
TO BE USED WITH P90.983
WIRING