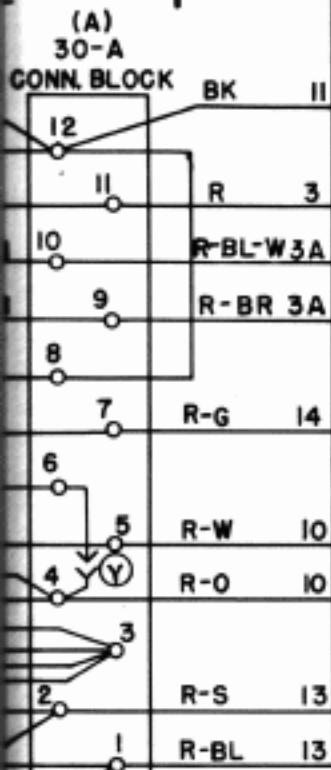


JONES
D2 CCT
CKET

TO FIG. OR 6

GRD



AI A2
FIG 2A

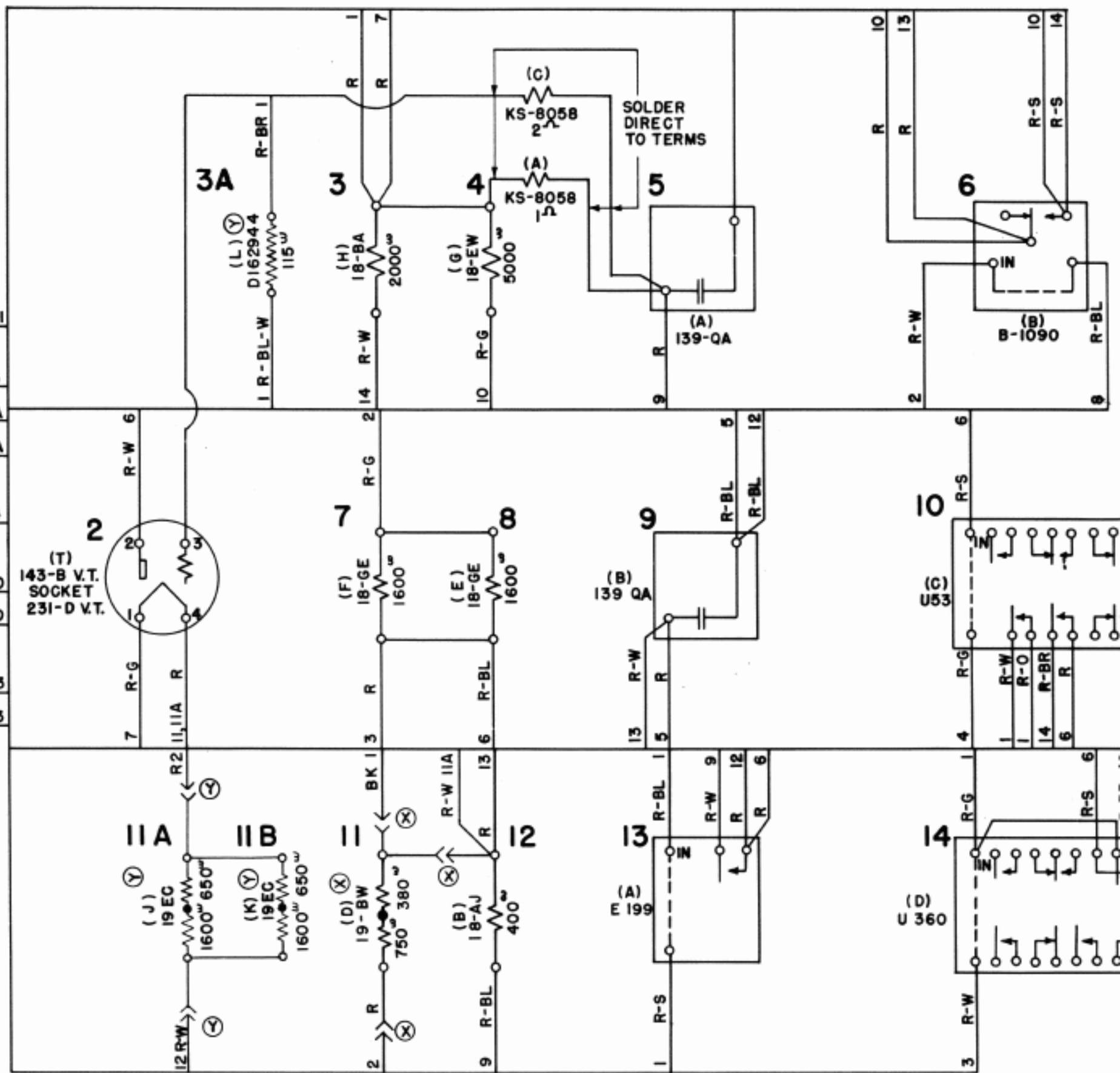


FIG. 1 (A&M ONLY)
(WIRING)
SD FIG. 1

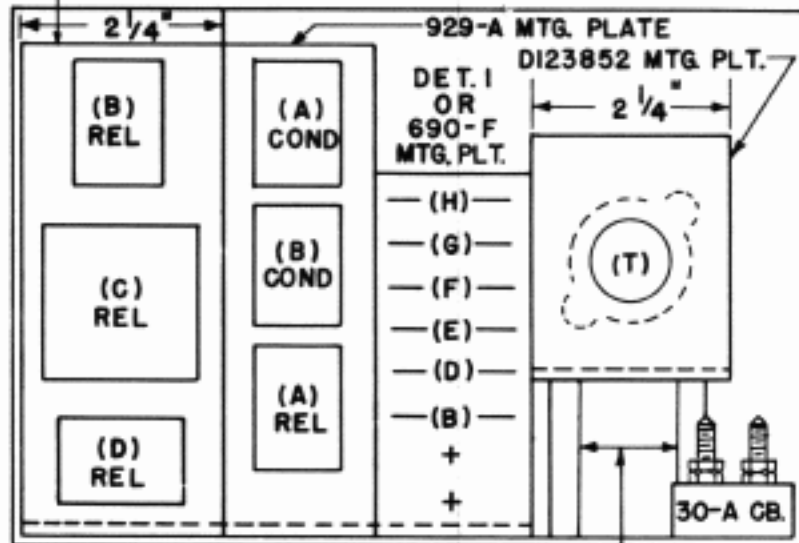
ND
P CORD
ED EQUIV.

TO FIG. A,
B,C OR G

TO RECP. (C)
IN 15N TABLE
OR RECP. (F)
IN XRT 116
TABLE

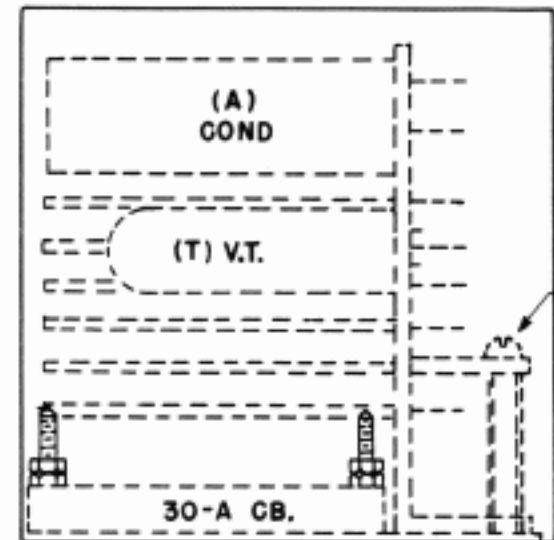
D123853
MTG. PLATE

COLUMBIA TYPE "A" SURFACE CABINET 6" X 9" X 6"

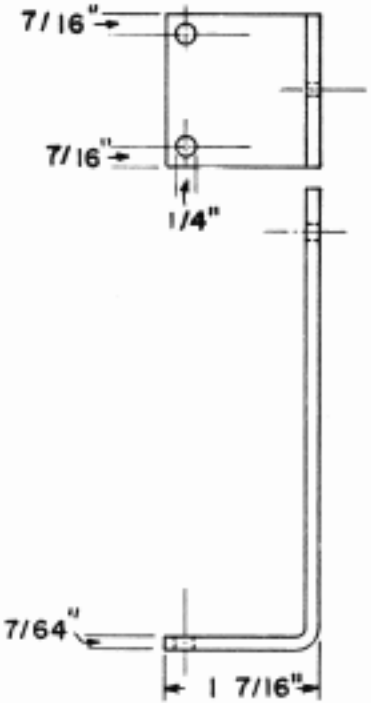


FRONT VIEW
(DOOR REMOVED)

STEEL BUSHINGS
3/8" OUTSIDE
1/4" INSIDE
1 3/4" LONG



END VIEW



DRILL
.191"

DRILL FOR 19 TYPE RES

SPECIAL
D

FIG. 2
(EQUIPT.)
(A&M ONLY)

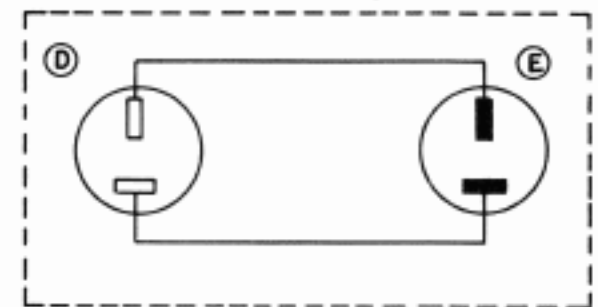
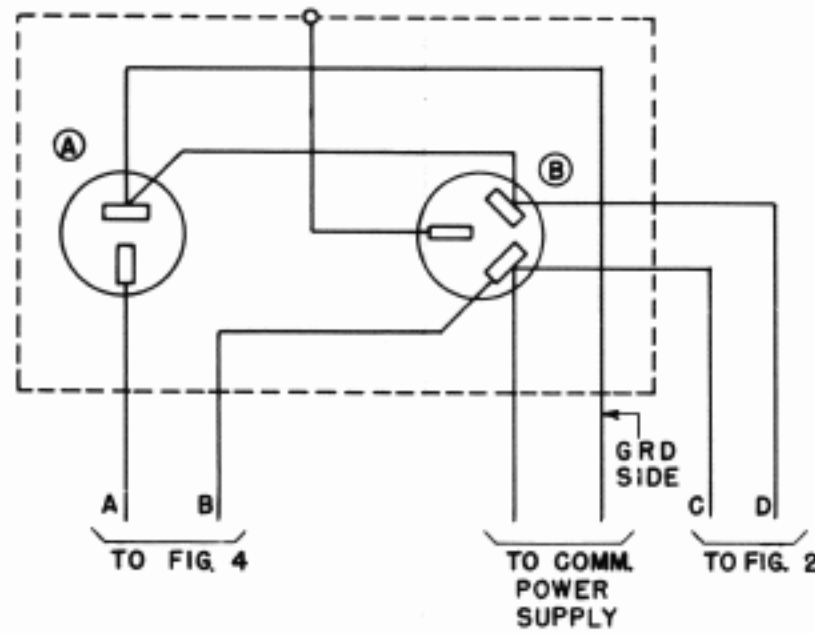
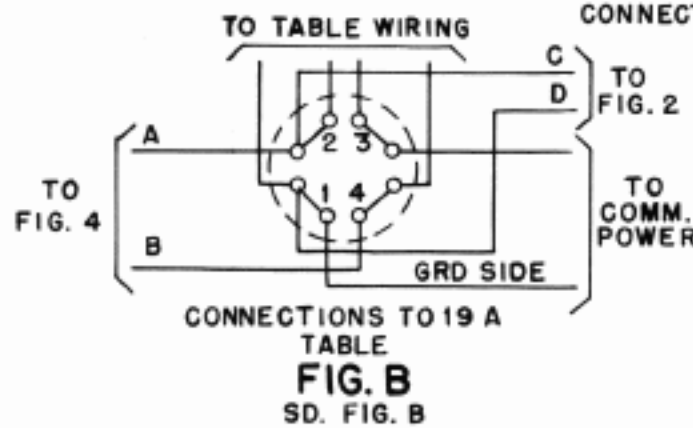


FIG. C
CONNECTIONS TO 15 A TABLE
SD FIG. C



CONNECTIONS TO 19 A
TABLE
FIG. B
SD. FIG. B

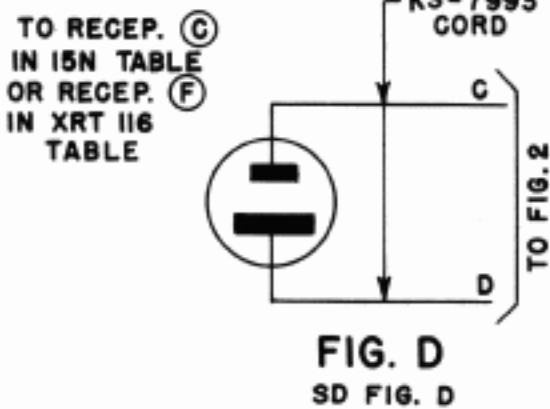


FIG. D
SD FIG. D

CONN	
TABLE	
19A	C
15A	
15N	
XRT115	
XRT116	

BELL SYSTEM PRACTICES

TELETYPEWRITER STATION
INSTALLATION AND MAINTENANCE

SECTION P-90.969

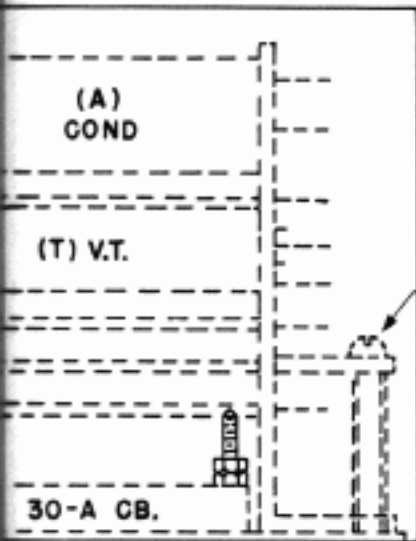
ISSUE M JULY 1953
LONG LINES DEPT.

REPRODUCED FROM DWG. 21516-T-33

SHEET 1 OF 3 SHEETS

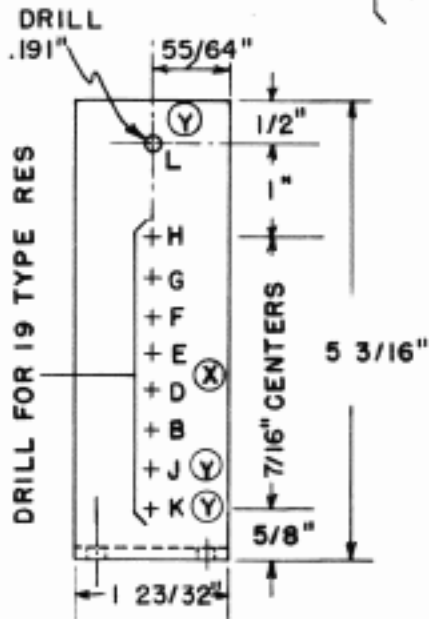
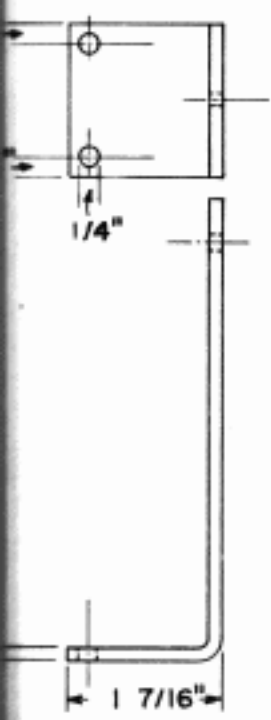
NOTES

1. WIRING TO BE 22 DSGL OR DACL UNLESS OTHERWISE NOTED.
2. SCHEMATIC SHOWN ON 21516-SD-116 (BSP SECTION P90.968)
3. SETS MFD. PRIOR TO ISS. 7, 21516-SD-116 HAVE (X) WRG. AND APP. ONLY FOR A.C. OPERATION. TO CONVERT SETS MFD. PRIOR TO ISS. 7 FOR D.C. OPERATION ADD (Y) WRG. AND APP. AND OMIT X WRG. AND APP. FOR NEW SETS PROVIDE ARRANGEMENTS PER FIG. 6 P90.969. AND P91.947 FIG. 1.
4. YOKE TO BE ARRANGED TO INCLUDE 19A TABLE POWER SWITCH WITH SWITCHES IN POSITION AS FOLLOWS:-
19A TABLE POWER SW "OFF"
REMOTE MOTOR CONT. SW "ON"
(A) RELAY SW "OFF"



12-24 X 2 3/8" R.H.M. SCR.
& HEX. NUT

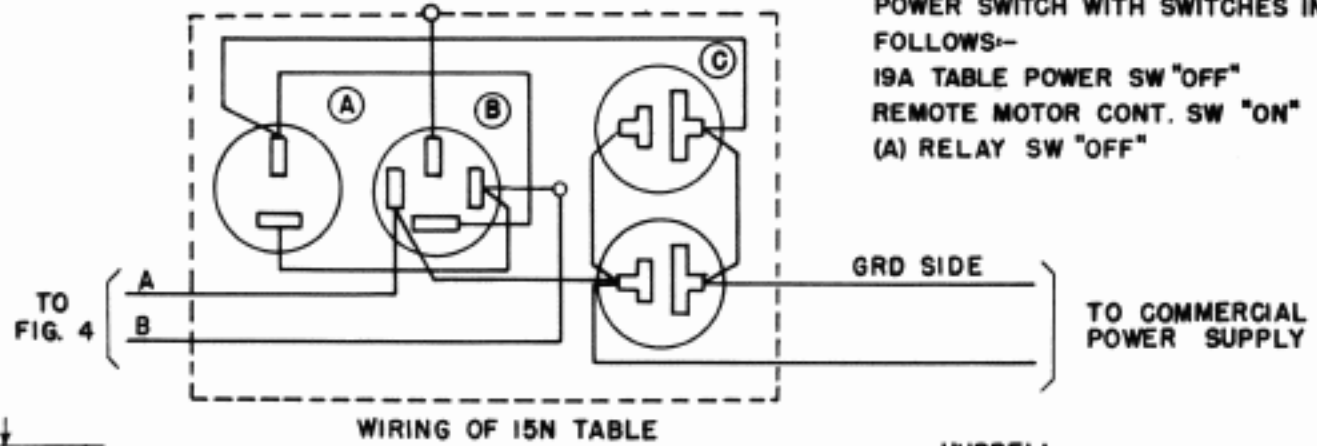
END VIEW



SPECIAL MTG. PLT. APP (Y)
DET. I

FIG. G

CONNECTIONS FOR LEADS ABC&D OF FIGS. 2 AND 4				
TABLE	LEAD A	LEAD B	LEAD C	LEAD D
19A	C.H.TERM.2	C.H.TERM.4	C.H.TERM.2	C.H.TERM.1
15A	FIG.C	FIG.C	FIG.C	FIG.C
15N	FIG.A	FIG.A	FIG.D	FIG.D
XRT115	TERM.4	TERM.6	TERM.1	TERM.4
XRT116	TERM33(A)	TERM 46(A)	FIG. D	FIG. D



WIRING OF 15N TABLE

FIG. A
SD FIG. A

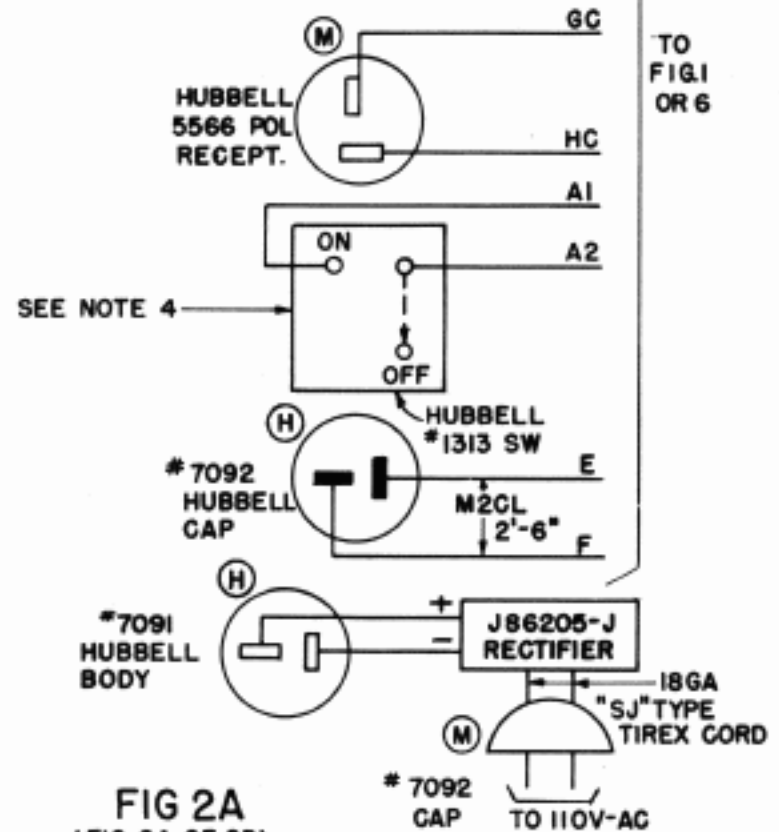
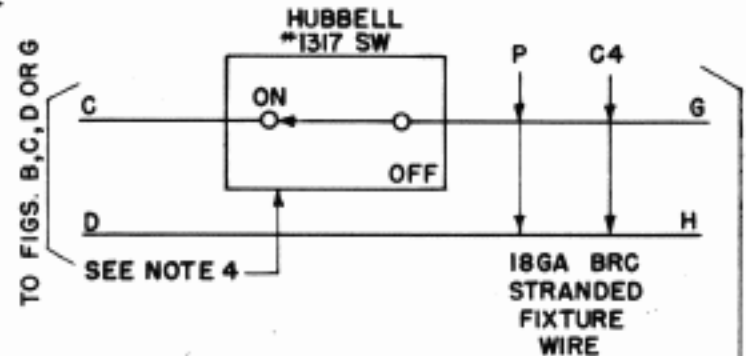


FIG 2A
(FIG. 2A OF SD)

SWITCHING ARRANGEMENT

15 TYPE TTY ON 15 TYPE TABLE AND NO.19 SET WITH PULLING OR HOLDING MAGNETS WIRING AND EQUIPMENT OF ARRANGEMENT TO PERMIT CONNECTING POWER TO THE TTY SET BY A 5 SECOND BREAK SIGNAL AND DISCONNECTING IT BY A FIG.-BLANK-H OR FIG.-H COMBINATION ALSO MANUAL CONTROL OF POWER TO TTY SET WIRING

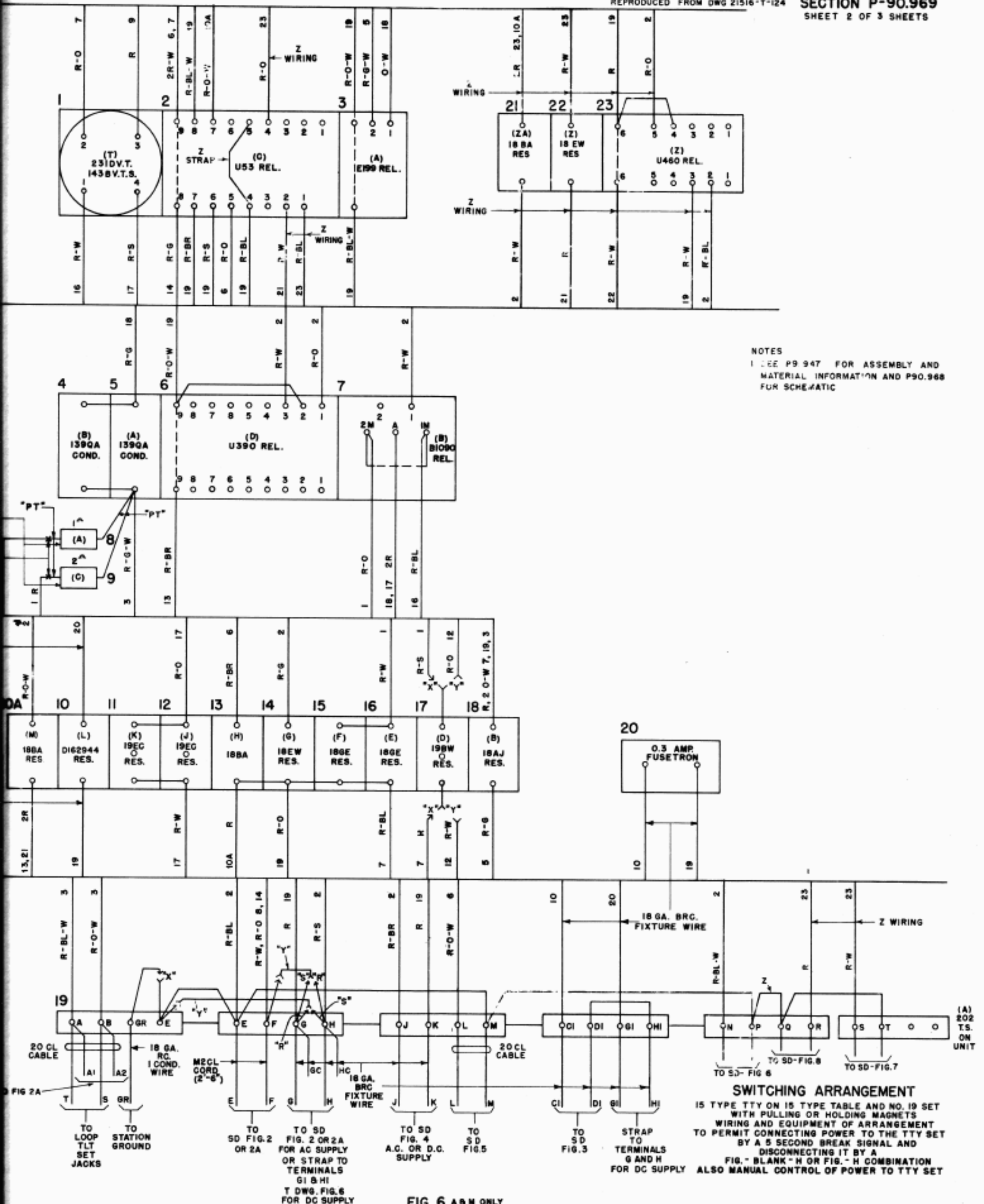


FIG. 6 A & M ONLY
(SD FIG. 1)
ISS. 15

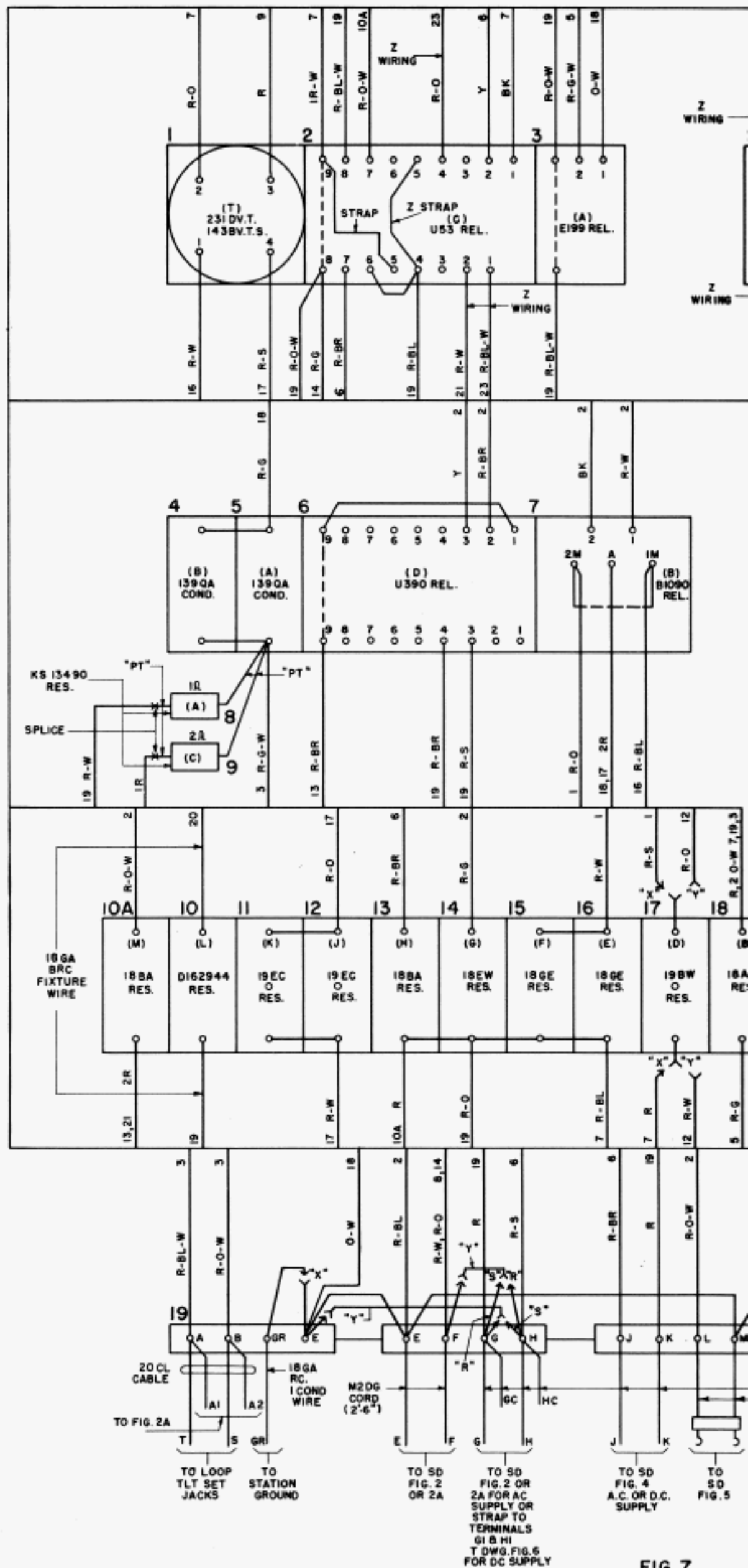


FIG. 7
(SD FIG. 1)
ISS. 18

NOTES
1. SEE P90.947 ASSEMBLY AND MATERIAL INFORMATION AND P90.968 FOR SCHEMATIC.

CHANGES FROM FIG. 6 (A&M ONLY) SHEET 2:

- ITEM 1 DISCONNECT R-BR FROM 7B OF RELAY "C"
 - ITEM 2 DISCONNECT R-S FROM 6B OF RELAY "C"
 - ITEM 3 CONNECT R-BR RELEASED IN ITEM 1 TO 4B OF RELAY "D"
 - ITEM 4 CONNECT R-S RELEASED IN ITEM 2 TO 3B OF RELAY "D"
 - ITEM 5 DISCONNECT R-O-W FROM 9T OF RELAY "D"
 - ITEM 6 REMOVE STRAP 9T TO 2T OF RELAY "D"
 - ITEM 7 CONNECT R-O-W RELEASED IN ITEM 5 TO 8B OF RELAY "C"
 - *ITEM 8 REMOVE R-O FROM 1T AND R-W FROM 3T OF RELAY "D". SPLICE AND TAPE
 - ITEM 9 CONNECT 2T OF RELAY "C" TO 3T OF RELAY "D"
 - ITEM 10 CONNECT 2 OF RELAY "B" TO 1T OF RELAY "C"
 - ITEM 11 STRAP 1T TO 9T OF RELAY "D"
 - ITEM 12 STRAP 6B TO 4B OF RELAY "C"
 - ITEM 13 CONNECT 7B OF RELAY "C" TO 2T OF RELAY "D"
 - ITEM 14 ADDED CORD & PLUG TO TERMS L&M OF UNIT #19
- * FACTORY WIRING CHANGE FOR ITEM 8 WOULD BE STRAP 9T TO 5B OF RELAY "C"

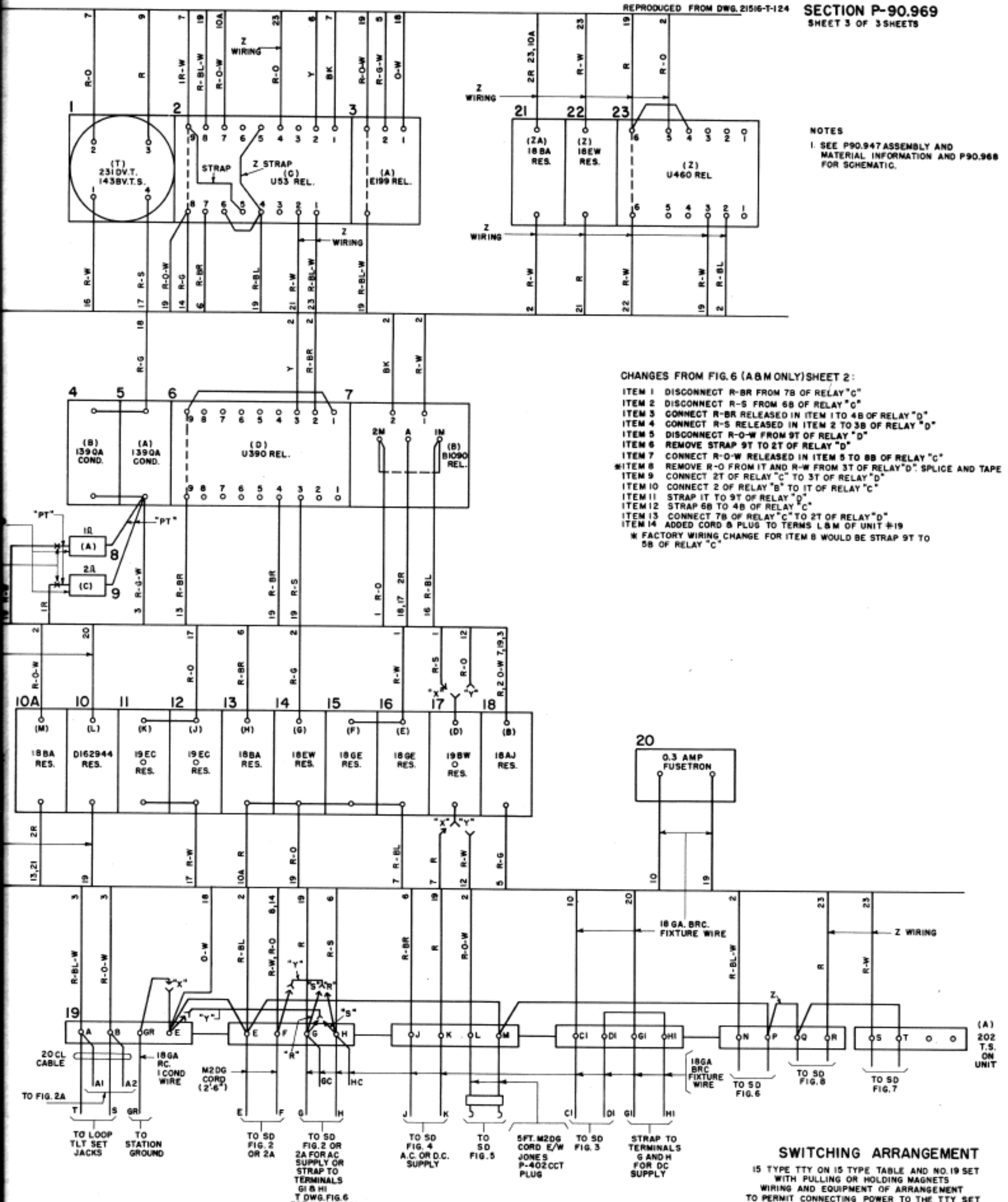


FIG. 7
(SD FIG. 1)
155.18

SWITCHING ARRANGEMENT
15 TYPE TTY ON 15 TYPE TABLE AND NO. 19 SET WITH PULLING OR HOLDING MAGNETS WIRING AND EQUIPMENT OF ARRANGEMENT TO PERMIT CONNECTING POWER TO THE TTY SET BY A 5 SECOND BREAK SIGNAL AND DISCONNECTING IT BY A FIG. "BLANK" H OR FIG. "H" COMBINATION ALSO MANUAL CONTROL OF POWER TO TTY SET