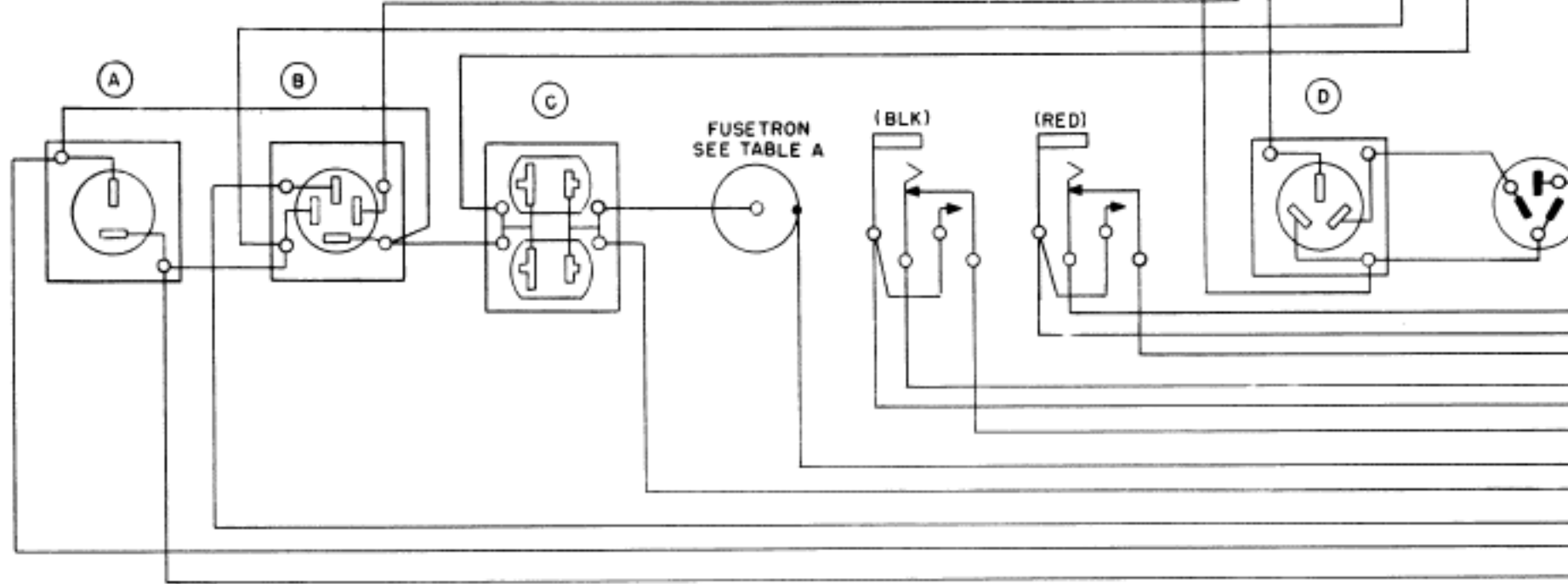
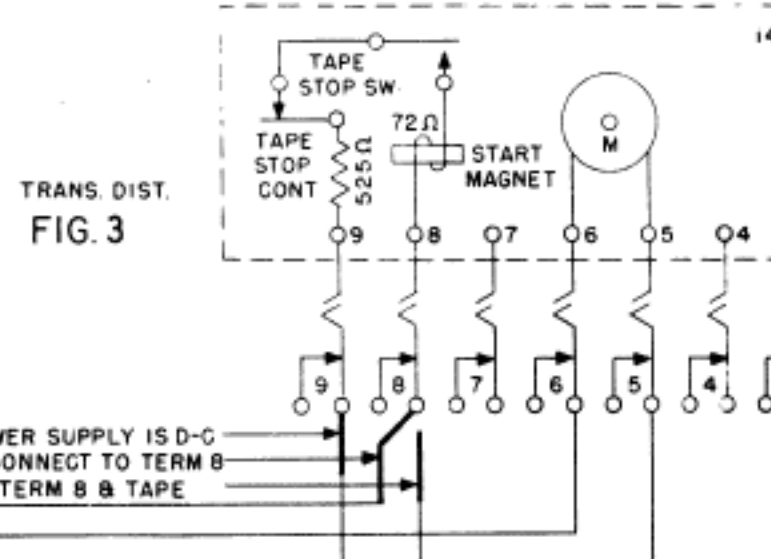
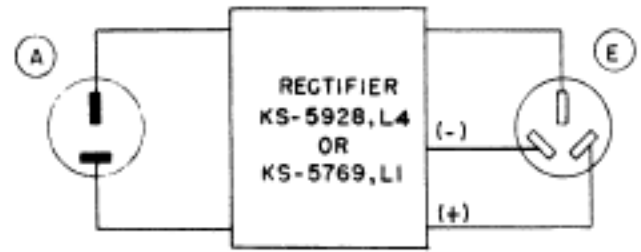
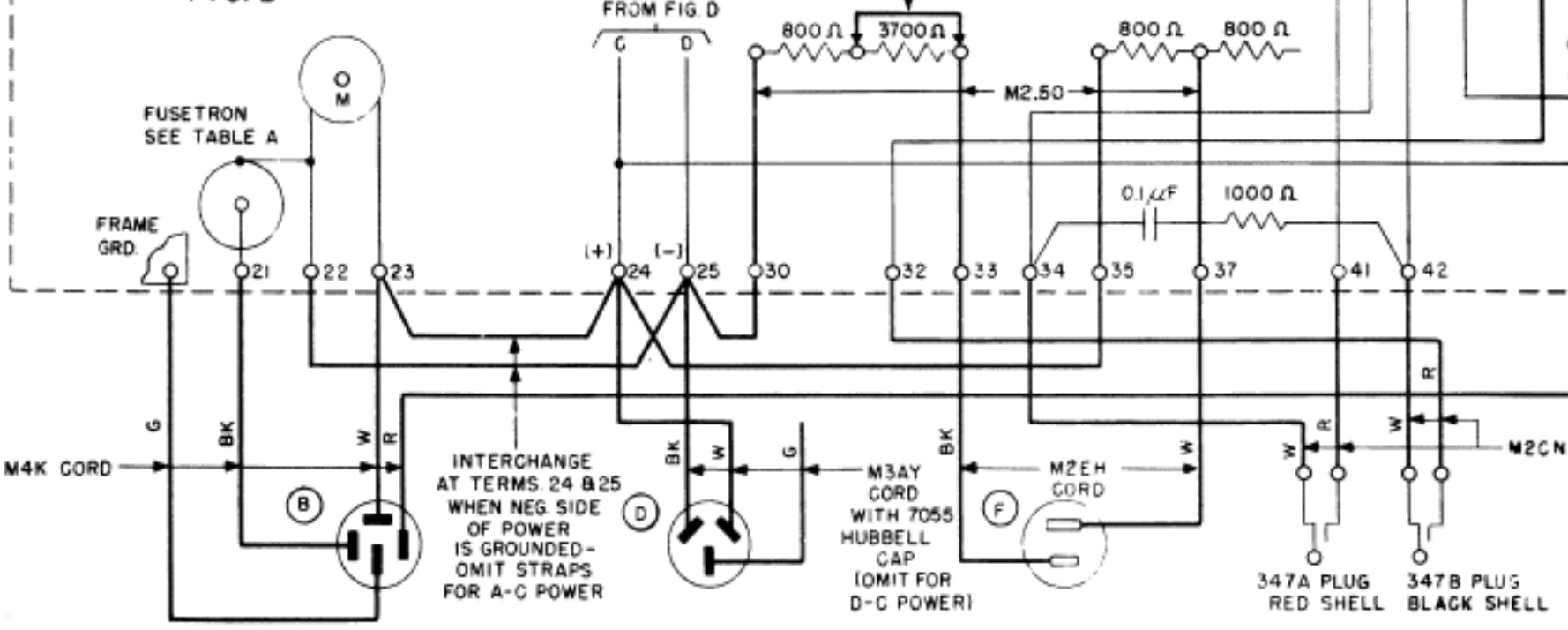
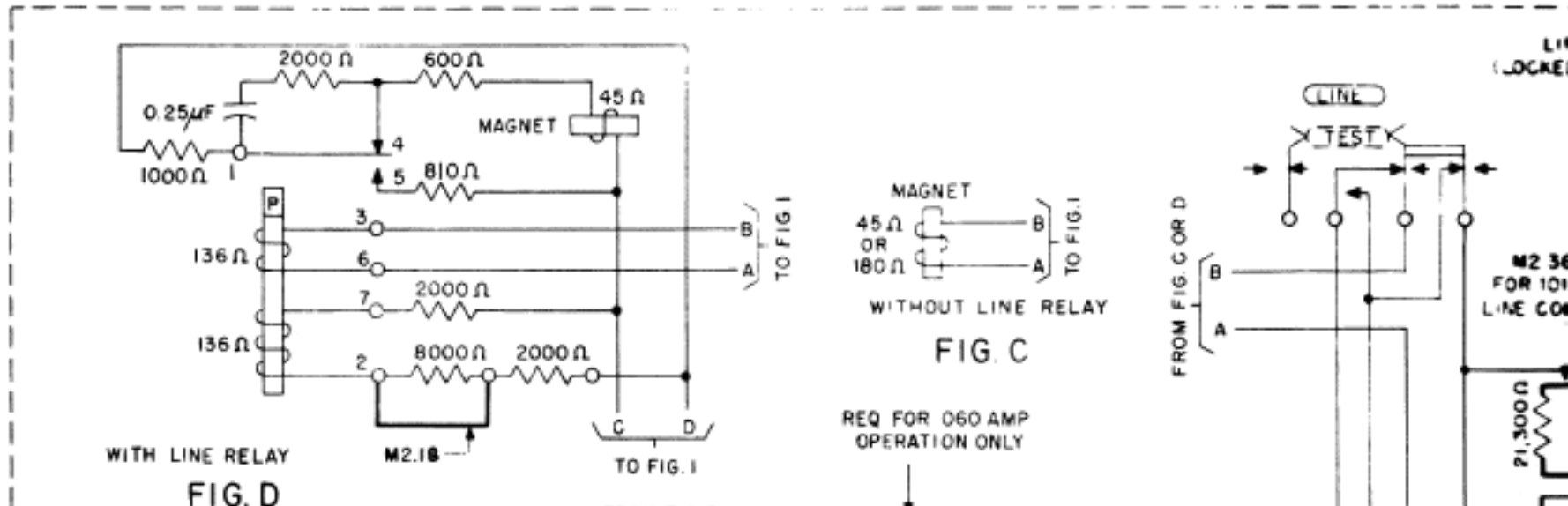
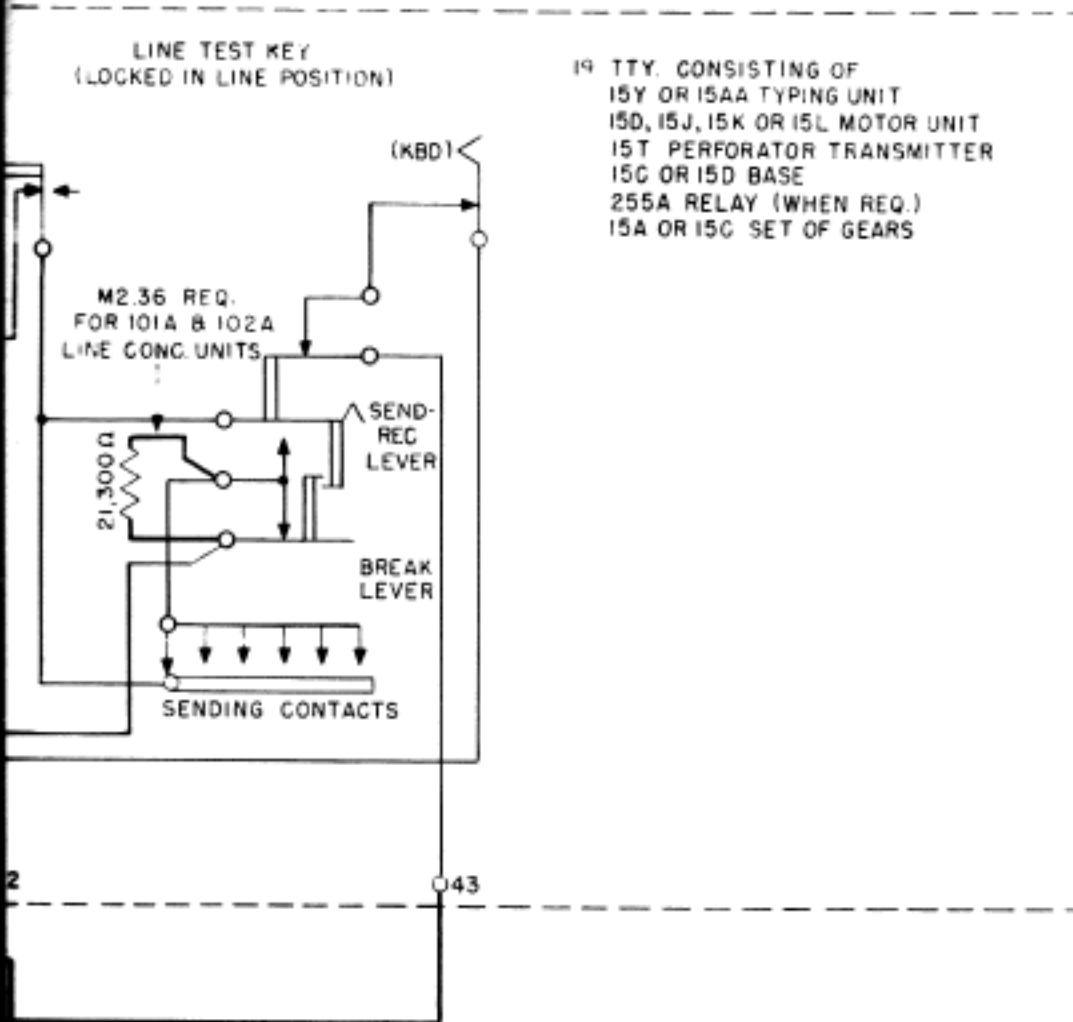


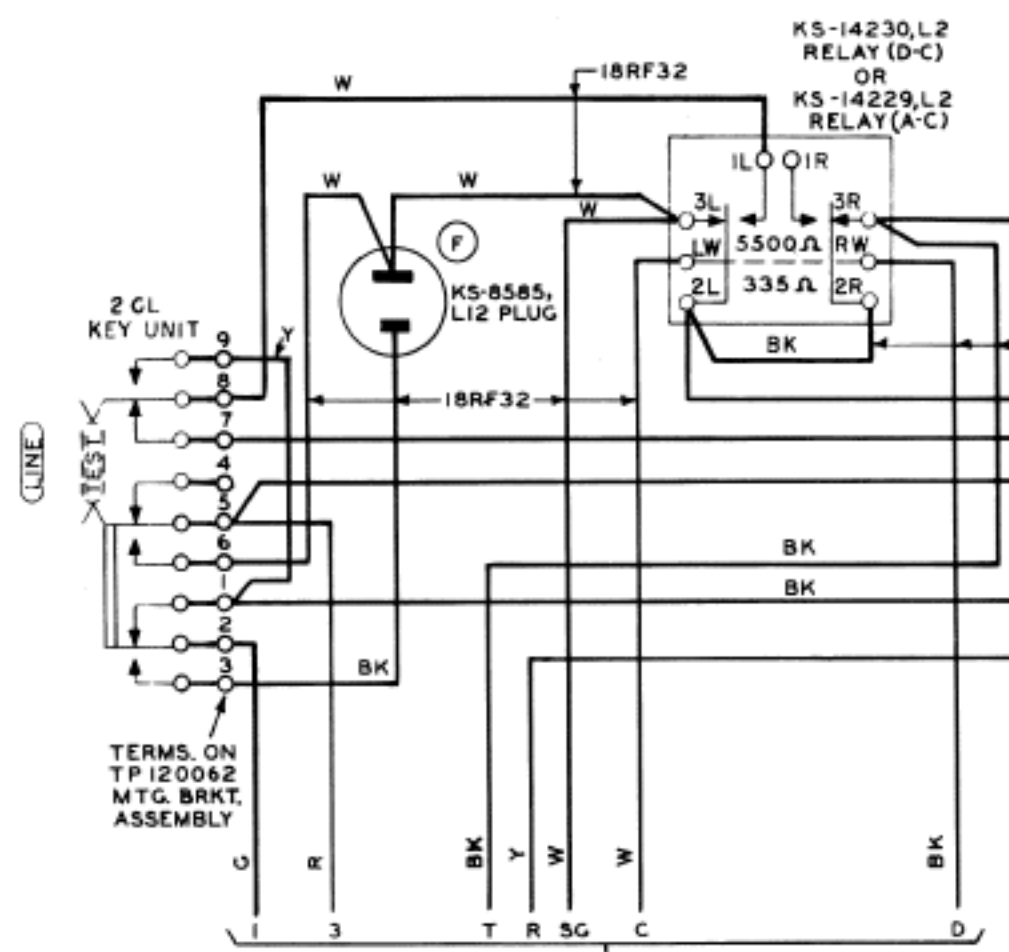
STATION IDENTIFICATION





19 TTY, CONSISTING OF
 15Y OR 15AA TYPING UNIT
 15D, 15J, 15K OR 15L MOTOR UNIT
 15T PERFORATOR TRANSMITTER
 15G OR 15D BASE
 255A RELAY (WHEN REQ.)
 15A OR 15C SET OF GEARS

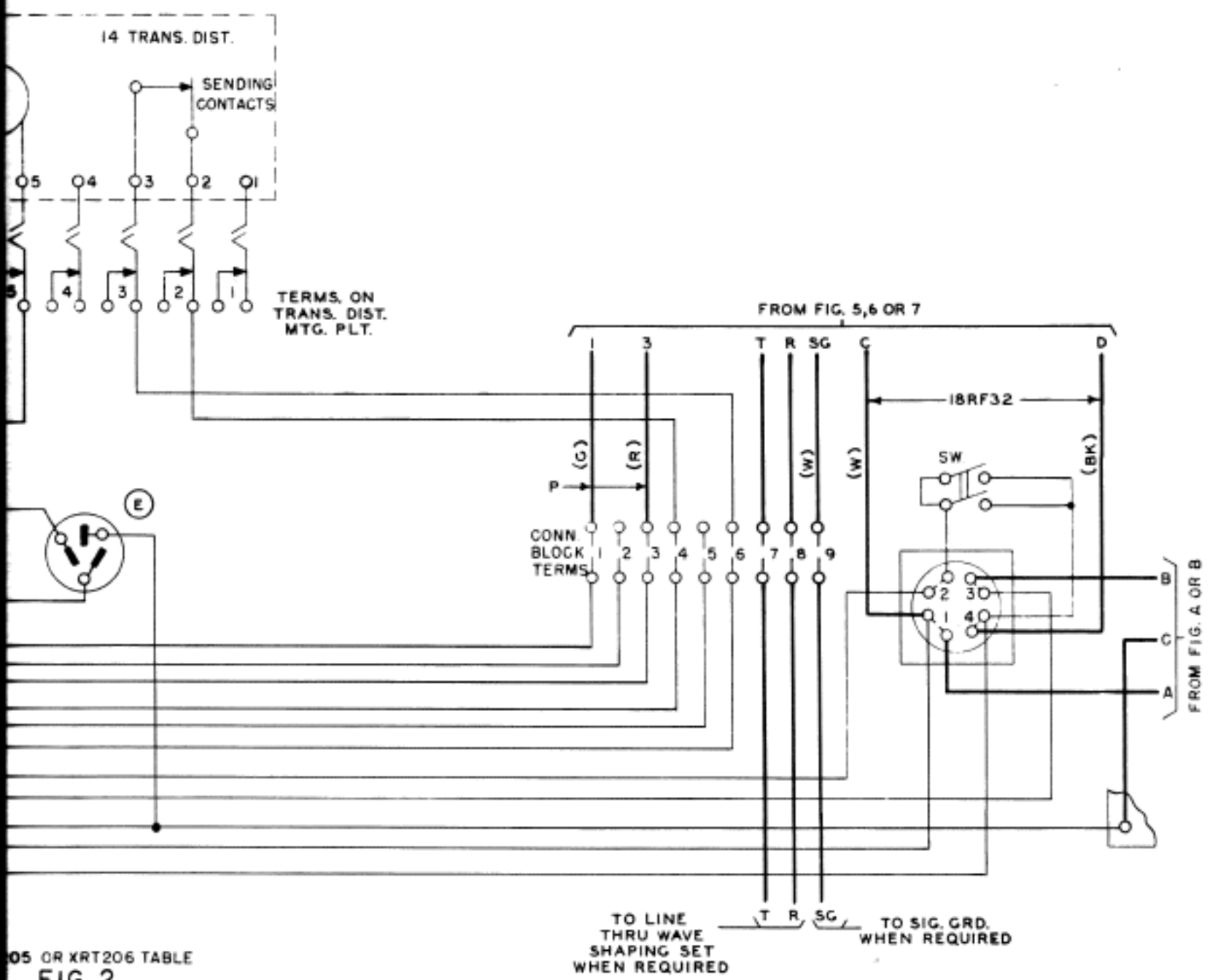
19 TTY WITH
 120 V A-C OR D-C POWER SUPPLY
FIG. 1



CONN WHEN USED WITH TTY, SWBDS NO 1, 1A, 3A, 3C OR 5
 OR WITH TTY, LINE CONC. UNIT NO 101B
 OR MULTI-SECTION LINE TERMINATING IN 4 LOOP

FIG. 5

7B PLUG
 BACK SHELL



05 OR XRT206 TABLE
FIG. 2

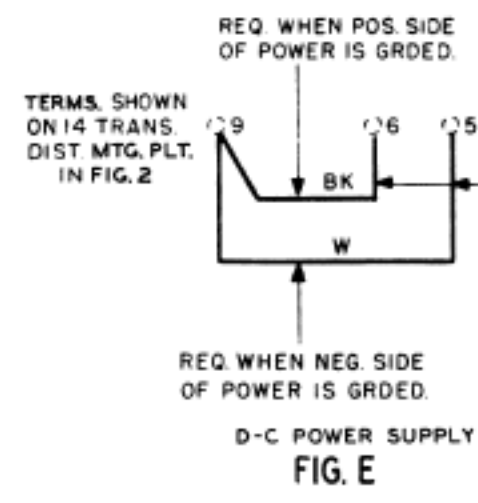
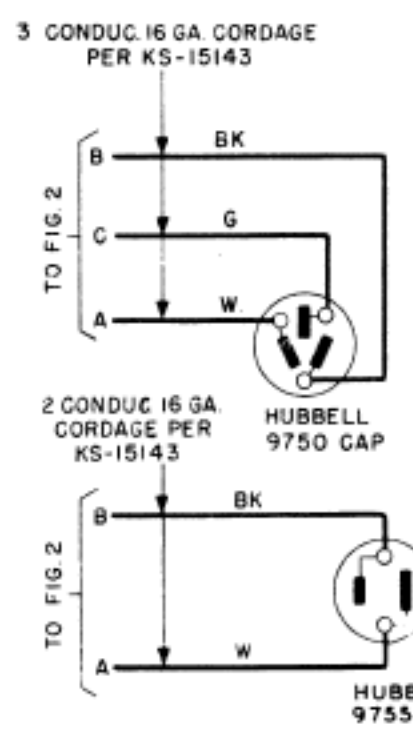


FIG. E



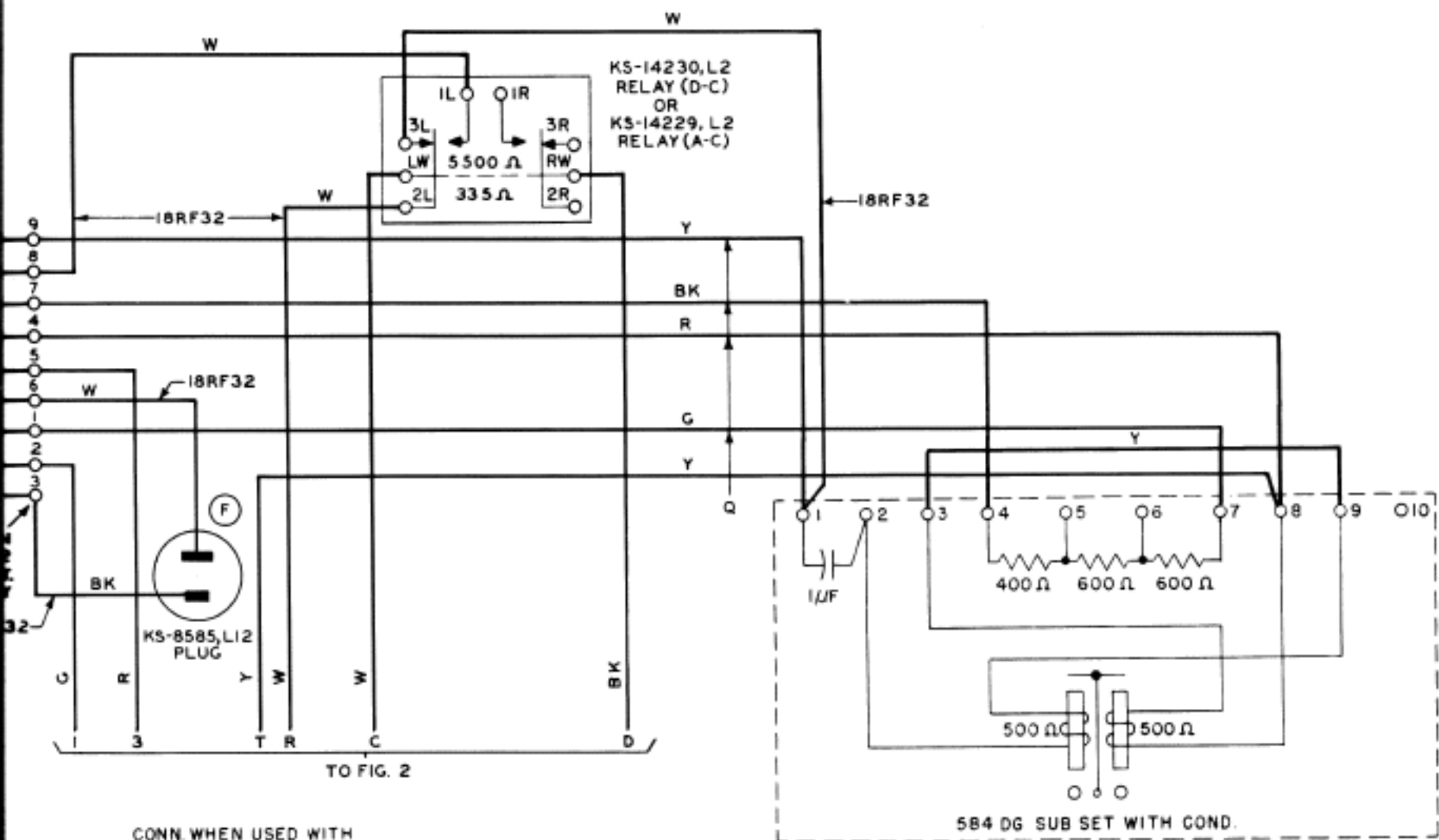
HUBBELL
 9750 CAP

MOTOR	FUSETRON	
	TABLE	TTY
A-C SYNCH.	T8	T3.2
A-C SER.	T6.2	T1.6
D-C	T2.5	T1.6

TABLE A

PLANS USED	
M2.50	
M2.18*	
M2.27*	
M2.36*	

* WHEN REQUIRED



CONN. WHEN USED WITH
TTY LINE CONC. UNITS
NO. 101A OR 102A

FIG. 6

NOTE:

1. ALL COLOR CODED LEADS ARE 22 GA. BROWN, TYPE GS STATION WIRE PER AT&T CO. SPEC. 7089 UNLESS OTHERWISE SPECIFIED. YELLOW CONDUCTORS OF THIS WIRE SHALL BE USED FOR ALL CONNECTIONS BETWEEN KEY UNIT AND MOUNTING BRACKET ASSEMBLY.

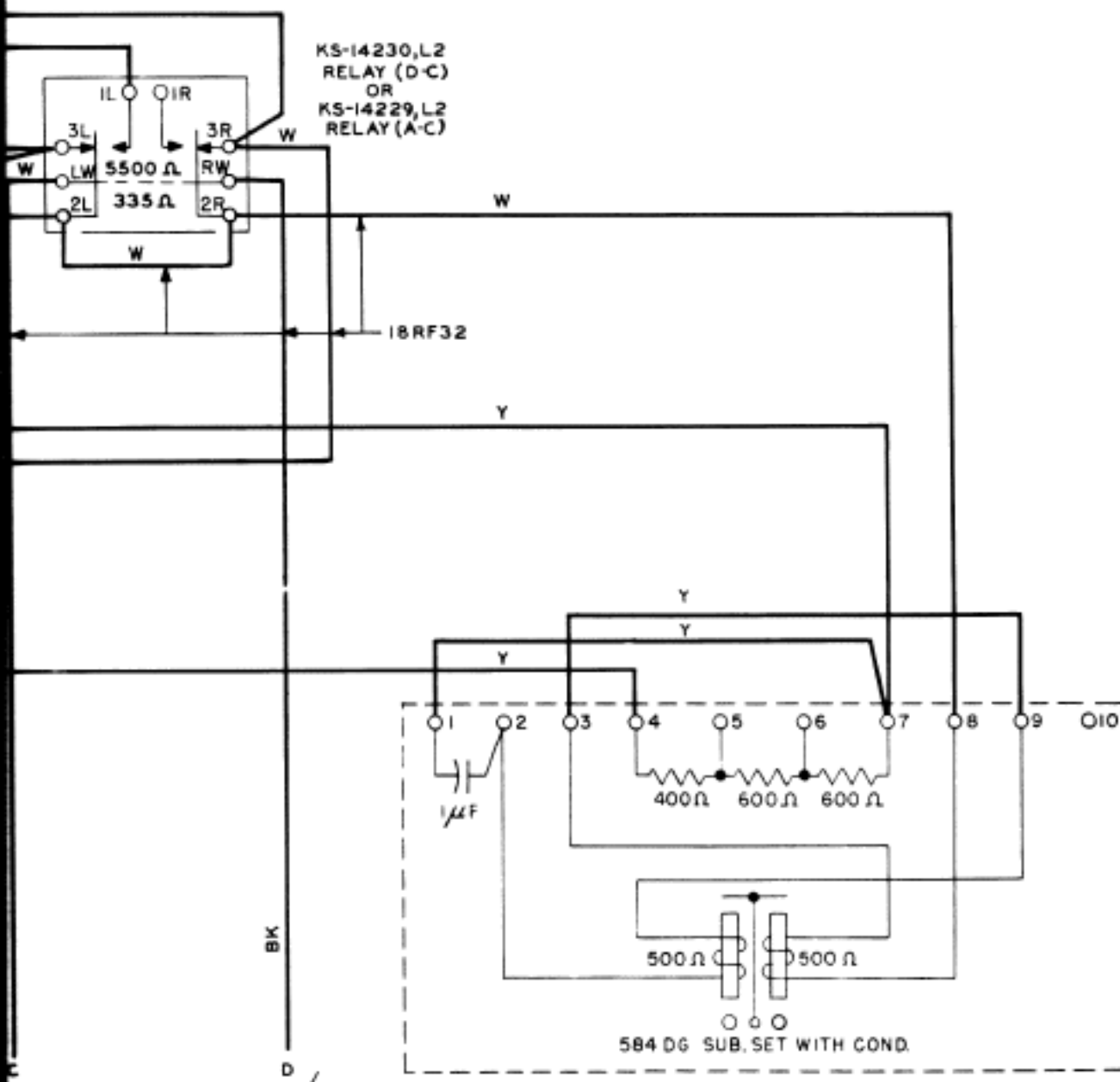


FIG. 2

ATTENDED TWX SERVICE
19 TTY SET ON XRT205 OR XRT206 TABLE
OVER A LOCAL LINE, OR AN OPEN LOOP
AND A MULTI-SECTION LINE
TO TTY SWBDS. NO. 1, 1A, 3A, 3C, OR 5 OR
TO 101A, 101B, OR 102A TTY LINE CONC. UNITS
OR TO AN OPEN LOOP TLT BD.
120V A-C OR D-C POWER SUPPLY