

THIS MODEL IS BUILT TO ORDER. THE LISTING OF THE OTHER MODEL PARTS, THE LOCATION OF THE PARTS AND THE WAY TO OBTAIN THEM IS GIVEN IN THE APPROPRIATE PARTS LIST. TO GET THE COMPLETE PARTS LIST FOR THE MODEL YOU WANT TO ORDER, CONTACT THE BUREAU OF TECHNICAL ASSISTANCE, 2200 BROADWAY, NEW YORK, N.Y. 10024.

FOR INFORMATION ON THE MODEL YOU WANT TO ORDER, CONTACT THE BUREAU OF TECHNICAL ASSISTANCE, 2200 BROADWAY, NEW YORK, N.Y. 10024. TO GET THE COMPLETE PARTS LIST FOR THE MODEL YOU WANT TO ORDER, CONTACT THE BUREAU OF TECHNICAL ASSISTANCE, 2200 BROADWAY, NEW YORK, N.Y. 10024.



Figure 1 - Mechanical Part of the Model

at the start of the 1990s, the first of which is now a major UK research institution. The second was the first of a series of spin-out companies being set up. A third is the first of a series of spin-out companies. A fourth is the first of a series of spin-out companies.

2000 The first of a series of spin-out companies. The second was the first of a series of spin-out companies. The third is the first of a series of spin-out companies. The fourth is the first of a series of spin-out companies.

The first of a series of spin-out companies. The second was the first of a series of spin-out companies.

2001 The first of a series of spin-out companies. The second was the first of a series of spin-out companies. The third is the first of a series of spin-out companies. The fourth is the first of a series of spin-out companies.



Figure 1. Centrifugal/rotational apparatus.

designer and the client. The design team is responsible for the overall design, including the selection of materials, colors, and finishes. The client is responsible for providing the necessary information and feedback throughout the design process.

The design team consists of several members, each with a specific role. The lead designer is responsible for the overall design direction and for coordinating the work of the other team members. The interior designer is responsible for the selection of furniture, lighting, and other interior elements. The architect is responsible for the overall design of the building, including the exterior and structural elements. The contractor is responsible for the construction of the building and for ensuring that the design is implemented correctly.

The design team works closely with the client to understand their needs and preferences. This involves a series of meetings and discussions, during which the team presents design concepts and the client provides feedback. The team then refines the design based on the client's input, ensuring that the final design meets their requirements.

The design team also works closely with the contractor to ensure that the design is implemented correctly. This involves providing detailed specifications and drawings, and monitoring the construction process to ensure that the design is followed.

The design team is responsible for the overall design of the building, including the exterior and structural elements. They work closely with the architect and contractor to ensure that the design is implemented correctly.



Figure 1 - Architecture

most recently in Pennsylvania, where it is used to help stabilize a section of Interstate 76. The contractor, J. J. Conroy Inc., of Philadelphia, says that the material is used to stabilize embankments, fill in potholes and to stabilize road shoulders.

1997 THE YEAR FOR A CHANGE AT THE TOP
 The year for a change at the top of the construction industry. The industry's largest firms have announced plans to merge, and several smaller firms have announced plans to merge.

1998 THE YEAR FOR A CHANGE AT THE TOP
 The year for a change at the top of the construction industry. The industry's largest firms have announced plans to merge, and several smaller firms have announced plans to merge.

The industry's largest firms have announced plans to merge, and several smaller firms have announced plans to merge.

1999 THE YEAR FOR A CHANGE AT THE TOP

The year for a change at the top of the construction industry. The industry's largest firms have announced plans to merge, and several smaller firms have announced plans to merge.

2000 THE YEAR FOR A CHANGE AT THE TOP
 The year for a change at the top of the construction industry. The industry's largest firms have announced plans to merge, and several smaller firms have announced plans to merge.



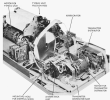


Figure 1 – 3D Cutaway – (From Generalized Gas Flow)

