

U. S. GOVERNMENT PRINTING OFFICE

1975 O-300-000

- 1. **GENERAL INFORMATION** ..... 1-100-000
- 2. **OPERATIONS** ..... 1-100-000

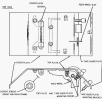
1-100-000	1-100-000
1-100-001	1-100-000
1-100-002	1-100-000
1-100-003	1-100-000
1-100-004	1-100-000
1-100-005	1-100-000
1-100-006	1-100-000
1-100-007	1-100-000
1-100-008	1-100-000
1-100-009	1-100-000
1-100-010	1-100-000
1-100-011	1-100-000
1-100-012	1-100-000
1-100-013	1-100-000
1-100-014	1-100-000
1-100-015	1-100-000
1-100-016	1-100-000
1-100-017	1-100-000
1-100-018	1-100-000
1-100-019	1-100-000
1-100-020	1-100-000
1-100-021	1-100-000
1-100-022	1-100-000
1-100-023	1-100-000
1-100-024	1-100-000
1-100-025	1-100-000
1-100-026	1-100-000
1-100-027	1-100-000
1-100-028	1-100-000
1-100-029	1-100-000
1-100-030	1-100-000
1-100-031	1-100-000
1-100-032	1-100-000
1-100-033	1-100-000
1-100-034	1-100-000
1-100-035	1-100-000
1-100-036	1-100-000
1-100-037	1-100-000
1-100-038	1-100-000
1-100-039	1-100-000
1-100-040	1-100-000
1-100-041	1-100-000
1-100-042	1-100-000
1-100-043	1-100-000
1-100-044	1-100-000
1-100-045	1-100-000
1-100-046	1-100-000
1-100-047	1-100-000
1-100-048	1-100-000
1-100-049	1-100-000
1-100-050	1-100-000
1-100-051	1-100-000
1-100-052	1-100-000
1-100-053	1-100-000
1-100-054	1-100-000
1-100-055	1-100-000
1-100-056	1-100-000
1-100-057	1-100-000
1-100-058	1-100-000
1-100-059	1-100-000
1-100-060	1-100-000
1-100-061	1-100-000
1-100-062	1-100-000
1-100-063	1-100-000
1-100-064	1-100-000
1-100-065	1-100-000
1-100-066	1-100-000
1-100-067	1-100-000
1-100-068	1-100-000
1-100-069	1-100-000
1-100-070	1-100-000
1-100-071	1-100-000
1-100-072	1-100-000
1-100-073	1-100-000
1-100-074	1-100-000
1-100-075	1-100-000
1-100-076	1-100-000
1-100-077	1-100-000
1-100-078	1-100-000
1-100-079	1-100-000
1-100-080	1-100-000
1-100-081	1-100-000
1-100-082	1-100-000
1-100-083	1-100-000
1-100-084	1-100-000
1-100-085	1-100-000
1-100-086	1-100-000
1-100-087	1-100-000
1-100-088	1-100-000
1-100-089	1-100-000
1-100-090	1-100-000
1-100-091	1-100-000
1-100-092	1-100-000
1-100-093	1-100-000
1-100-094	1-100-000
1-100-095	1-100-000
1-100-096	1-100-000
1-100-097	1-100-000
1-100-098	1-100-000
1-100-099	1-100-000

- 3. **MAINTENANCE**
- 4. **TRAINING**
- 5. **PERSONNEL**
- 6. **FINANCIAL MANAGEMENT**
- 7. **LEGAL COUNSEL**
- 8. **GENERAL INFORMATION**
- 9. **OPERATIONS**
- 10. **MAINTENANCE**
- 11. **TRAINING**
- 12. **PERSONNEL**
- 13. **FINANCIAL MANAGEMENT**
- 14. **LEGAL COUNSEL**
- 15. **GENERAL INFORMATION**
- 16. **OPERATIONS**
- 17. **MAINTENANCE**
- 18. **TRAINING**
- 19. **PERSONNEL**
- 20. **FINANCIAL MANAGEMENT**
- 21. **LEGAL COUNSEL**
- 22. **GENERAL INFORMATION**
- 23. **OPERATIONS**
- 24. **MAINTENANCE**
- 25. **TRAINING**
- 26. **PERSONNEL**
- 27. **FINANCIAL MANAGEMENT**
- 28. **LEGAL COUNSEL**
- 29. **GENERAL INFORMATION**
- 30. **OPERATIONS**
- 31. **MAINTENANCE**
- 32. **TRAINING**
- 33. **PERSONNEL**
- 34. **FINANCIAL MANAGEMENT**
- 35. **LEGAL COUNSEL**
- 36. **GENERAL INFORMATION**
- 37. **OPERATIONS**
- 38. **MAINTENANCE**
- 39. **TRAINING**
- 40. **PERSONNEL**
- 41. **FINANCIAL MANAGEMENT**
- 42. **LEGAL COUNSEL**
- 43. **GENERAL INFORMATION**
- 44. **OPERATIONS**
- 45. **MAINTENANCE**
- 46. **TRAINING**
- 47. **PERSONNEL**
- 48. **FINANCIAL MANAGEMENT**
- 49. **LEGAL COUNSEL**
- 50. **GENERAL INFORMATION**
- 51. **OPERATIONS**
- 52. **MAINTENANCE**
- 53. **TRAINING**
- 54. **PERSONNEL**
- 55. **FINANCIAL MANAGEMENT**
- 56. **LEGAL COUNSEL**
- 57. **GENERAL INFORMATION**
- 58. **OPERATIONS**
- 59. **MAINTENANCE**
- 60. **TRAINING**
- 61. **PERSONNEL**
- 62. **FINANCIAL MANAGEMENT**
- 63. **LEGAL COUNSEL**
- 64. **GENERAL INFORMATION**
- 65. **OPERATIONS**
- 66. **MAINTENANCE**
- 67. **TRAINING**
- 68. **PERSONNEL**
- 69. **FINANCIAL MANAGEMENT**
- 70. **LEGAL COUNSEL**
- 71. **GENERAL INFORMATION**
- 72. **OPERATIONS**
- 73. **MAINTENANCE**
- 74. **TRAINING**
- 75. **PERSONNEL**
- 76. **FINANCIAL MANAGEMENT**
- 77. **LEGAL COUNSEL**
- 78. **GENERAL INFORMATION**
- 79. **OPERATIONS**
- 80. **MAINTENANCE**
- 81. **TRAINING**
- 82. **PERSONNEL**
- 83. **FINANCIAL MANAGEMENT**
- 84. **LEGAL COUNSEL**
- 85. **GENERAL INFORMATION**
- 86. **OPERATIONS**
- 87. **MAINTENANCE**
- 88. **TRAINING**
- 89. **PERSONNEL**
- 90. **FINANCIAL MANAGEMENT**
- 91. **LEGAL COUNSEL**
- 92. **GENERAL INFORMATION**
- 93. **OPERATIONS**
- 94. **MAINTENANCE**
- 95. **TRAINING**
- 96. **PERSONNEL**
- 97. **FINANCIAL MANAGEMENT**
- 98. **LEGAL COUNSEL**
- 99. **GENERAL INFORMATION**
- 100. **OPERATIONS**

- 101. **GENERAL INFORMATION**
- 102. **OPERATIONS**
- 103. **MAINTENANCE**
- 104. **TRAINING**
- 105. **PERSONNEL**
- 106. **FINANCIAL MANAGEMENT**
- 107. **LEGAL COUNSEL**
- 108. **GENERAL INFORMATION**
- 109. **OPERATIONS**
- 110. **MAINTENANCE**
- 111. **TRAINING**
- 112. **PERSONNEL**
- 113. **FINANCIAL MANAGEMENT**
- 114. **LEGAL COUNSEL**
- 115. **GENERAL INFORMATION**
- 116. **OPERATIONS**
- 117. **MAINTENANCE**
- 118. **TRAINING**
- 119. **PERSONNEL**
- 120. **FINANCIAL MANAGEMENT**
- 121. **LEGAL COUNSEL**
- 122. **GENERAL INFORMATION**
- 123. **OPERATIONS**
- 124. **MAINTENANCE**
- 125. **TRAINING**
- 126. **PERSONNEL**
- 127. **FINANCIAL MANAGEMENT**
- 128. **LEGAL COUNSEL**
- 129. **GENERAL INFORMATION**
- 130. **OPERATIONS**
- 131. **MAINTENANCE**
- 132. **TRAINING**
- 133. **PERSONNEL**
- 134. **FINANCIAL MANAGEMENT**
- 135. **LEGAL COUNSEL**
- 136. **GENERAL INFORMATION**
- 137. **OPERATIONS**
- 138. **MAINTENANCE**
- 139. **TRAINING**
- 140. **PERSONNEL**
- 141. **FINANCIAL MANAGEMENT**
- 142. **LEGAL COUNSEL**
- 143. **GENERAL INFORMATION**
- 144. **OPERATIONS**
- 145. **MAINTENANCE**
- 146. **TRAINING**
- 147. **PERSONNEL**
- 148. **FINANCIAL MANAGEMENT**
- 149. **LEGAL COUNSEL**
- 150. **GENERAL INFORMATION**
- 151. **OPERATIONS**
- 152. **MAINTENANCE**
- 153. **TRAINING**
- 154. **PERSONNEL**
- 155. **FINANCIAL MANAGEMENT**
- 156. **LEGAL COUNSEL**
- 157. **GENERAL INFORMATION**
- 158. **OPERATIONS**
- 159. **MAINTENANCE**
- 160. **TRAINING**
- 161. **PERSONNEL**
- 162. **FINANCIAL MANAGEMENT**
- 163. **LEGAL COUNSEL**
- 164. **GENERAL INFORMATION**
- 165. **OPERATIONS**
- 166. **MAINTENANCE**
- 167. **TRAINING**
- 168. **PERSONNEL**
- 169. **FINANCIAL MANAGEMENT**
- 170. **LEGAL COUNSEL**
- 171. **GENERAL INFORMATION**
- 172. **OPERATIONS**
- 173. **MAINTENANCE**
- 174. **TRAINING**
- 175. **PERSONNEL**
- 176. **FINANCIAL MANAGEMENT**
- 177. **LEGAL COUNSEL**
- 178. **GENERAL INFORMATION**
- 179. **OPERATIONS**
- 180. **MAINTENANCE**
- 181. **TRAINING**
- 182. **PERSONNEL**
- 183. **FINANCIAL MANAGEMENT**
- 184. **LEGAL COUNSEL**
- 185. **GENERAL INFORMATION**
- 186. **OPERATIONS**
- 187. **MAINTENANCE**
- 188. **TRAINING**
- 189. **PERSONNEL**
- 190. **FINANCIAL MANAGEMENT**
- 191. **LEGAL COUNSEL**
- 192. **GENERAL INFORMATION**
- 193. **OPERATIONS**
- 194. **MAINTENANCE**
- 195. **TRAINING**
- 196. **PERSONNEL**
- 197. **FINANCIAL MANAGEMENT**
- 198. **LEGAL COUNSEL**
- 199. **GENERAL INFORMATION**
- 200. **OPERATIONS**

5.06 Submittals

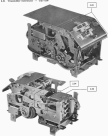
1. **Submit to ARCHITECT** for review and approval all components to be manufactured from steel fabrications. Obtain the steel fabricator's shop drawings, including details, before fabricating.
2. **Submit to ARCHITECT** shop drawings for review and approval, including details, before fabricating.
3. **Submit to ARCHITECT** drawings for the steel fabrications before start of the steel work.



4. **REVISIONS, SUBSTITUTIONS, OMISSIONS, AND OMISSIONS** shall be made in accordance with the contract documents and the contract documents.

1. ANSCHAUUNG

1.1. **Wiederherstellung = Teil 1**





1 VALVE BODY  
2 VALVE SEAT



3 VALVE SEAT  
4 VALVE SEAT

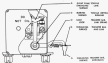
5 VALVE BODY  
6 VALVE SEAT

7 VALVE BODY  
8 VALVE SEAT

9 VALVE BODY  
10 VALVE SEAT



FIG. 2. Instrumental analysis.



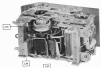
**NOTE.**—The specimen is positioned on the upper surface of the beam and is supported by a dial indicator. The dial indicator is used to measure the displacement of the specimen during the test.

**QUESTION 20 (10%)**

**2.1) (100% (100% MARKS))**



### 2.2. Component Details – (a) Section 22222-1000



**IDENTIFICATION SHEET**

DATE: \_\_\_\_\_ TIME: \_\_\_\_\_



1.1 EYEPIECE  
1.2 OBJECTIVE LENSES

\_\_\_\_\_  
\_\_\_\_\_  
\_\_\_\_\_



2.1 EYEPIECE  
2.2 OBJECTIVE LENSES  
2.3 STAGE  
2.4 STAGE  
2.5 STAGE  
2.6 BASE

\_\_\_\_\_  
\_\_\_\_\_  
\_\_\_\_\_  
\_\_\_\_\_  
\_\_\_\_\_  
\_\_\_\_\_



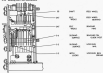
5.2 • Researching Materials — 2nd Stage



Fig. 1. Schematic diagram of the mechanism.



Fig. 2. Schematic diagram of the mechanism.







001 00000000000000



001  
001

001  
001



001  
001

001  
001

001 00000000000000



001  
001

001  
001

001  
001

001  
001

001  
001

001  
001