

STATEMENTS OF ASSETS, LIABILITIES, RESERVE ACCOUNTS AND FUND ACCOUNTS (CONTINUED)
 FINANCIAL STATEMENTS AND RESERVES

ACCOUNT	2001	2000	U.S. DOLLARS
1. ASSETS	1	2	3.00
2. LIABILITIES	3	4	3.00
3. RESERVE	5	6	3.00
4. FUND	7	8	3.00
5. TOTAL ASSETS	9	10	3.00
6. TOTAL LIABILITIES	11	12	3.00
7. TOTAL RESERVE	13	14	3.00
8. TOTAL FUND	15	16	3.00
9. TOTAL ASSETS	17	18	3.00
10. TOTAL LIABILITIES	19	20	3.00
11. TOTAL RESERVE	21	22	3.00
12. TOTAL FUND	23	24	3.00
13. TOTAL ASSETS	25	26	3.00
14. TOTAL LIABILITIES	27	28	3.00
15. TOTAL RESERVE	29	30	3.00
16. TOTAL FUND	31	32	3.00
17. TOTAL ASSETS	33	34	3.00
18. TOTAL LIABILITIES	35	36	3.00
19. TOTAL RESERVE	37	38	3.00
20. TOTAL FUND	39	40	3.00
21. TOTAL ASSETS	41	42	3.00
22. TOTAL LIABILITIES	43	44	3.00
23. TOTAL RESERVE	45	46	3.00
24. TOTAL FUND	47	48	3.00
25. TOTAL ASSETS	49	50	3.00
26. TOTAL LIABILITIES	51	52	3.00
27. TOTAL RESERVE	53	54	3.00
28. TOTAL FUND	55	56	3.00
29. TOTAL ASSETS	57	58	3.00
30. TOTAL LIABILITIES	59	60	3.00
31. TOTAL RESERVE	61	62	3.00
32. TOTAL FUND	63	64	3.00
33. TOTAL ASSETS	65	66	3.00
34. TOTAL LIABILITIES	67	68	3.00
35. TOTAL RESERVE	69	70	3.00
36. TOTAL FUND	71	72	3.00
37. TOTAL ASSETS	73	74	3.00
38. TOTAL LIABILITIES	75	76	3.00
39. TOTAL RESERVE	77	78	3.00
40. TOTAL FUND	79	80	3.00
41. TOTAL ASSETS	81	82	3.00
42. TOTAL LIABILITIES	83	84	3.00
43. TOTAL RESERVE	85	86	3.00
44. TOTAL FUND	87	88	3.00
45. TOTAL ASSETS	89	90	3.00
46. TOTAL LIABILITIES	91	92	3.00
47. TOTAL RESERVE	93	94	3.00
48. TOTAL FUND	95	96	3.00
49. TOTAL ASSETS	97	98	3.00
50. TOTAL LIABILITIES	99	100	3.00
51. TOTAL RESERVE	101	102	3.00
52. TOTAL FUND	103	104	3.00
53. TOTAL ASSETS	105	106	3.00
54. TOTAL LIABILITIES	107	108	3.00
55. TOTAL RESERVE	109	110	3.00
56. TOTAL FUND	111	112	3.00
57. TOTAL ASSETS	113	114	3.00
58. TOTAL LIABILITIES	115	116	3.00
59. TOTAL RESERVE	117	118	3.00
60. TOTAL FUND	119	120	3.00
61. TOTAL ASSETS	121	122	3.00
62. TOTAL LIABILITIES	123	124	3.00
63. TOTAL RESERVE	125	126	3.00
64. TOTAL FUND	127	128	3.00
65. TOTAL ASSETS	129	130	3.00
66. TOTAL LIABILITIES	131	132	3.00
67. TOTAL RESERVE	133	134	3.00
68. TOTAL FUND	135	136	3.00
69. TOTAL ASSETS	137	138	3.00
70. TOTAL LIABILITIES	139	140	3.00
71. TOTAL RESERVE	141	142	3.00
72. TOTAL FUND	143	144	3.00
73. TOTAL ASSETS	145	146	3.00
74. TOTAL LIABILITIES	147	148	3.00
75. TOTAL RESERVE	149	150	3.00
76. TOTAL FUND	151	152	3.00
77. TOTAL ASSETS	153	154	3.00
78. TOTAL LIABILITIES	155	156	3.00
79. TOTAL RESERVE	157	158	3.00
80. TOTAL FUND	159	160	3.00
81. TOTAL ASSETS	161	162	3.00
82. TOTAL LIABILITIES	163	164	3.00
83. TOTAL RESERVE	165	166	3.00
84. TOTAL FUND	167	168	3.00
85. TOTAL ASSETS	169	170	3.00
86. TOTAL LIABILITIES	171	172	3.00
87. TOTAL RESERVE	173	174	3.00
88. TOTAL FUND	175	176	3.00
89. TOTAL ASSETS	177	178	3.00
90. TOTAL LIABILITIES	179	180	3.00
91. TOTAL RESERVE	181	182	3.00
92. TOTAL FUND	183	184	3.00
93. TOTAL ASSETS	185	186	3.00
94. TOTAL LIABILITIES	187	188	3.00
95. TOTAL RESERVE	189	190	3.00
96. TOTAL FUND	191	192	3.00
97. TOTAL ASSETS	193	194	3.00
98. TOTAL LIABILITIES	195	196	3.00
99. TOTAL RESERVE	197	198	3.00
100. TOTAL FUND	199	200	3.00

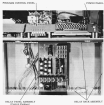


Figure 1 - Model 01 - (Single Window
Wooden Balcony)



FIGURA 1



FIGURA 2 (A) - ÍCONOS



FIGURA 2 (B) - ÍCONOS

Figura 1. Íconos Experimentais para o Teste de Memória

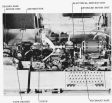


Figure 2 - 10000000 - Mechanical Building Envelope

ENVIRONMENTAL PROTECTION AGENCY

1.01 The Environmental Protection Agency is the lead agency for environmental protection. It is responsible for the development and implementation of national environmental policy.

1.02 Agency activities include research, regulation, and enforcement of environmental laws. The Agency also provides technical assistance to State and local governments.

1.03 The Agency's primary mission is to protect human health and the environment from the adverse effects of air, water, and land pollution.

1.04 The Agency's secondary mission is to provide technical assistance to State and local governments in the development and implementation of environmental laws.

ENVIRONMENTAL PROTECTION AGENCY

1.05 The Environmental Protection Agency is the lead agency for environmental protection. It is responsible for the development and implementation of national environmental policy. The Agency's primary mission is to protect human health and the environment from the adverse effects of air, water, and land pollution. The Agency's secondary mission is to provide technical assistance to State and local governments in the development and implementation of environmental laws.

MISSION STATEMENT

1.06 The Environmental Protection Agency is committed to the protection of human health and the environment. The Agency's primary mission is to protect human health and the environment from the adverse effects of air, water, and land pollution. The Agency's secondary mission is to provide technical assistance to State and local governments in the development and implementation of environmental laws.

2.0 ENVIRONMENTAL PROTECTION AGENCY

MISSION STATEMENT

2.01 The Environmental Protection Agency is committed to the protection of human health and the environment. The Agency's primary mission is to protect human health and the environment from the adverse effects of air, water, and land pollution. The Agency's secondary mission is to provide technical assistance to State and local governments in the development and implementation of environmental laws.

MISSION STATEMENT

2.02 The Environmental Protection Agency is committed to the protection of human health and the environment. The Agency's primary mission is to protect human health and the environment from the adverse effects of air, water, and land pollution. The Agency's secondary mission is to provide technical assistance to State and local governments in the development and implementation of environmental laws.

2.03 The Environmental Protection Agency is committed to the protection of human health and the environment. The Agency's primary mission is to protect human health and the environment from the adverse effects of air, water, and land pollution. The Agency's secondary mission is to provide technical assistance to State and local governments in the development and implementation of environmental laws.

2.04 The Environmental Protection Agency is committed to the protection of human health and the environment. The Agency's primary mission is to protect human health and the environment from the adverse effects of air, water, and land pollution. The Agency's secondary mission is to provide technical assistance to State and local governments in the development and implementation of environmental laws.

2.05 The Environmental Protection Agency is committed to the protection of human health and the environment. The Agency's primary mission is to protect human health and the environment from the adverse effects of air, water, and land pollution. The Agency's secondary mission is to provide technical assistance to State and local governments in the development and implementation of environmental laws.

2.06 The Environmental Protection Agency is committed to the protection of human health and the environment. The Agency's primary mission is to protect human health and the environment from the adverse effects of air, water, and land pollution. The Agency's secondary mission is to provide technical assistance to State and local governments in the development and implementation of environmental laws.

3.0 ENVIRONMENTAL PROTECTION AGENCY

3.01 The Environmental Protection Agency is committed to the protection of human health and the environment. The Agency's primary mission is to protect human health and the environment from the adverse effects of air, water, and land pollution. The Agency's secondary mission is to provide technical assistance to State and local governments in the development and implementation of environmental laws.

When the pupa is transferred to its place for an additional 24 hours or longer the pupa will usually develop into an imago. The imago is usually a male, but may be a female. The pupa is usually a male, but may be a female. The pupa is usually a male, but may be a female.

4.10. These data demonstrate that the pupa is usually a male, but may be a female. The pupa is usually a male, but may be a female. The pupa is usually a male, but may be a female.

Material Examined

4.11. The pupa is usually a male, but may be a female. The pupa is usually a male, but may be a female. The pupa is usually a male, but may be a female.

4.12. The pupa is usually a male, but may be a female. The pupa is usually a male, but may be a female. The pupa is usually a male, but may be a female.

4.13. The pupa is usually a male, but may be a female. The pupa is usually a male, but may be a female. The pupa is usually a male, but may be a female.

4.14. The pupa is usually a male, but may be a female. The pupa is usually a male, but may be a female. The pupa is usually a male, but may be a female.

1950	1951	1952	1953	1954	1955	1956	1957	1958	1959	1960
10	15	20	25	30	35	40	45	50	55	60
10	15	20	25	30	35	40	45	50	55	60
10	15	20	25	30	35	40	45	50	55	60

4.15. The pupa is usually a male, but may be a female. The pupa is usually a male, but may be a female. The pupa is usually a male, but may be a female.

4.16. The pupa is usually a male, but may be a female. The pupa is usually a male, but may be a female. The pupa is usually a male, but may be a female.

ENTOMOLOGICAL SOCIETY OF AMERICA



Figure 1. Block diagram of a power system with a fault on the transmission line.

