

PLUG-IN CENTRAL MECHANIZATION SYSTEM

<u>CONTENTS</u>	<u>PAGE</u>	<u>CONTENTS</u>	<u>PAGE</u>
1. General	1	5. Utilization	28
The Computer System	1	Program HN050 run options	28
The Operations Cycle	2	Creating	29
Timing	4	Accounting for Plug-In movement and changing stock levels	29
2. Inputs	4	Adjusting	30
To District Accounting Manager	4	Deleting	30
To Program HN051	4	Correcting Possible Errors	31
To Programs HN050 and HN052	7	6. Example System	32
Input Transactions	7	Introduction to Exhibits	32
Input Processing Sequence	9	Index to Exhibits	33
Material Transfer Report - Form CS-3	9	Exhibits	39
Material Transfer Report - Form CS-4	12	<u>1. GENERAL</u>	
3. Outputs	15	1.01 This section gives an explanation of the mechanized procedures associated with the Plug-In Central Stock (PICS) operation. It contains general information about the system and its relationship to the accounting function as well as specific, operational information.	
From Program HN051	15	<u>The Computer System</u>	
From PRINT/PUNCH Utility Program for HN051 Report HN60	15	1.02 Southwestern Bell Telephone PICS is an improved version of AT&T PICS/1 due to the mechanization of the accounting trans- fers associated with plug-in movement. This mechanized procedure is controlled by the Plug-In Equipment Coordinator (PIEC) and processed in the Division Accounting office where the Central Stock is located. The procedures are called CENSTKMTC (Central Stock Maintenance).	
From Programs HN050 and HN052	16		
From PRINT/PUNCH Utility Program for HN050 and HN052	17		
(a) Report HN51	17		
(b) Report HN54	17		
(c) Report HN55	21		
(d) Report HN56	22		
(e) Report HN58	22		
(f) Report HN59	23		
(g) Report HN62	23		
(h) Report HN63	24		
(i) Report HN64	25		
(j) Report HN65	25		
4. Checking	26		

1.03 A combined file of the equipment on hand at the Central Stock location (both operational and defective units) and equipment in repair is maintained in the computer system. The equipment in this file is addressed by property record (PR) numbers. Therefore, the file is primarily an investment record and is not a specific inventory record.

1.04 Changes in status of the computer investment record are achieved by input documents called Material Transfer Reports (MTR's). These documents are originated by the PIEC.

1.05 Major outputs of the computer system consist of: units and investment record of the inventory; detailed and summarized transfer reports; 5015 transfer summary cards to be inputted into the Property and Cost system; processing summaries and error reports.

1.06 All those using this system must keep in mind that there are two distinct and separate computer systems which ultimately record and report the Area PI investment: The CENSTKMTC system and the Property and Cost system. In order that the investment records of the two systems be representative of the actual PI investment, all operational and reconciliation procedures should be made with full awareness of the parallel operation of the systems (see Exhibit 1). The PIEC shall be responsible for the reconciliation between the two systems (see Section on reconciliation).

The Operations Cycle

1.07 The PIEC is responsible for originating the input documents (MTR's) which account for plug-in movement. These input transactions fall into two basic categories: inventory adjustments and transfers between the central stock location and outlying equipment locations.

(a) Inventory adjustments

1. New material billing
2. Purchases and sales to other areas or companies
3. Retirements
4. Transfers to supply accounts
5. Reconciliation

(b) Transfers to and from field locations

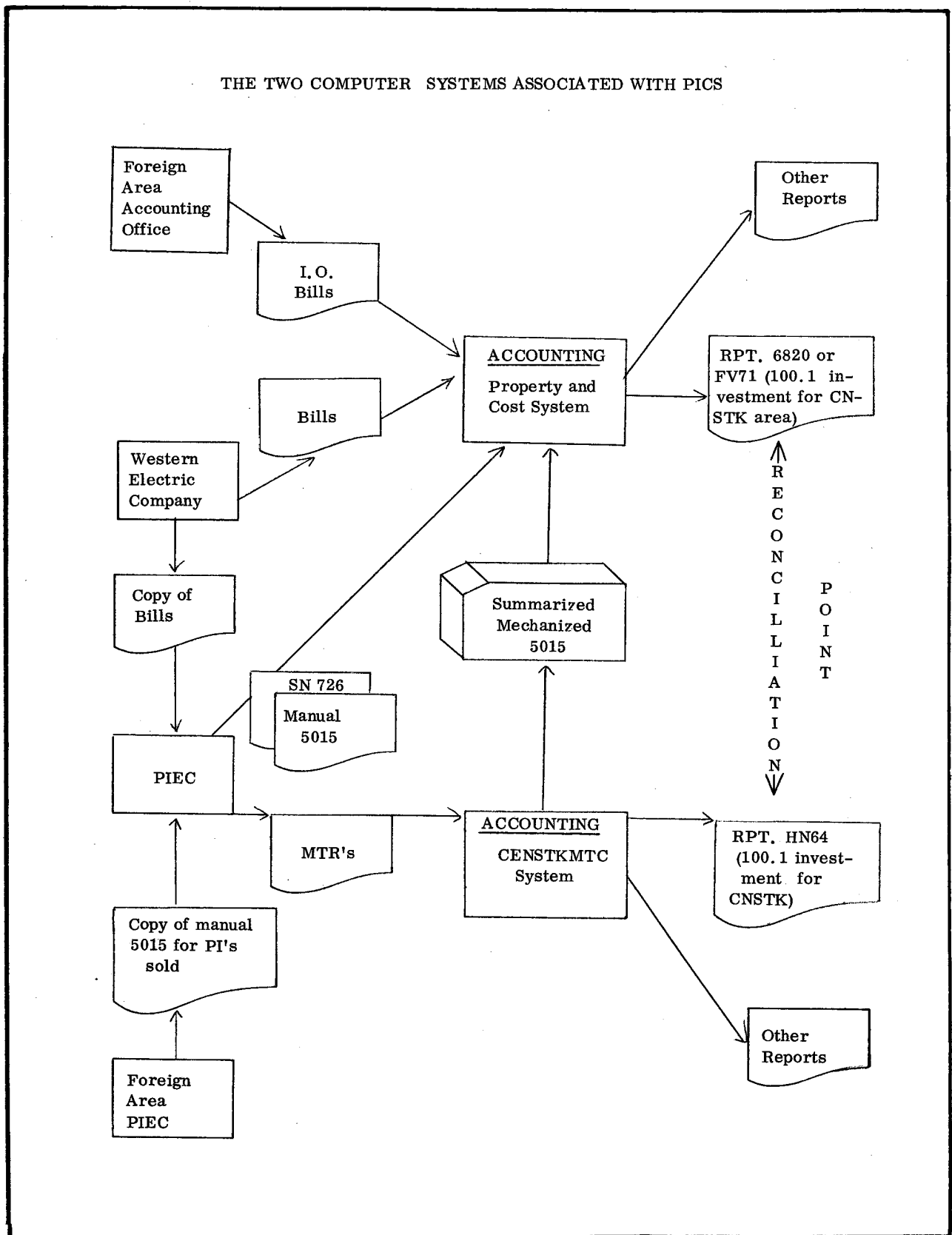
1. Due to units required in the field
2. Due to surplus units returned from the field

1.08 In order to spread the accounting key-punch load for a month's operations, the PIEC should arrange to send a group of MTR's for processing several times during the month (weekly). The CENSTKMTC program which accumulates the month's activity as it is sent to Accounting is HN051. After each processing of HN051, the PIEC will receive from Accounting printout HN60 which shows each transaction accumulated of that processing. The PIEC may request a listing of the key-punched cards to facilitate verification of keypunching accuracy.

1.09 At the end of a month's cycle and after the last processing of HN051, Accounting should process programs HN050 and HN052. These procedures take the activity which has been accumulated by all of the month's processings of HN051 and update the central stock investment record as well as create mechanized accounting transfers for use in the Property and Cost System.

1.10 After the processing of HN050 and HN052, the PIEC will receive a group of output printouts. The PIEC must determine from the printouts that all MTR's were filled out, keypunched, and processed as required. If the printouts are correct, the transfer summary printout (HN65) should be

EXHIBIT 1



authorized by the Engineering Department and returned to Accounting. This is their signal to begin record preposting and to use the transfer summary cards in the monthly processing of the Property and Cost System.

1.11 If the PIEC determines that the print-outs from the monthly run are not correct and that the errors cannot wait to be processed in the next month, a rerun should be arranged. In some cases, transfers at incorrect prices may be corrected manually.

Exhibit 2 depicts the monthly cycle of operation.

Timing

1.12 In order that record preposting can be done in the prescribed manner a cut-off date should be established by Accounting and the PIEC for acceptance of central stock transfer activity from the PIEC. Transactions beyond this date should be deferred until the following month. In establishing the cut-off date consideration should be given to time needed to forward computer reports to the foreign division for processing.

1.13 The determination of the cut-off date at approximately the mid-month point puts the CENSTKMTC system on a fiscal month cycle. The Property and Cost System is on a calendar month cycle. Therefore, in order to reconcile between the two systems, all activity from the mid-month point to the end-of-month point which has been entered into the Property and Cost system but not entered into the monthly run of the CEMSTKMTC system must be established (see Reconciliation Section).

2. INPUTS

2.01 To District Accounting Manager(Machine)

Exhibit 3 is a transmittal letter which should be used by the PIEC to send source documents to Accounting and inform them of processing requirements.

2.02 To Program HN051

(a) MTR activity cards:

MTR activity cards are keypunched from Forms CS-3 and CS-4 which are submitted by the PIEC. Form CS-4 is used to submit inventory adjustments as transfers into the central stock and outlying equipment locations. Form CS-3 is used for transfers to the outlying equipment location from the central stock location. The forms will be explained in detail at another point in this section.

(b) MTR batch cards:

MTR batch cards are keypunched from information provided by the PIEC and are inserted at the rear of each batch. The required format for the card is as follows:

<u>Columns</u>	<u>Information to be recorded</u>
1-21	blanks
22-25	total units recorded on transactions in the batch (circled numbers on transactions are negative)
26-41	blanks
42-49	total direct material cost recorded on transactions in the batch (circled numbers on transactions are negative)
50-57	total in place cost recorded on transactions in the batch (circled numbers are negative)
77-79	the 3-digit batch number
80	always "B"

EXHIBIT 2

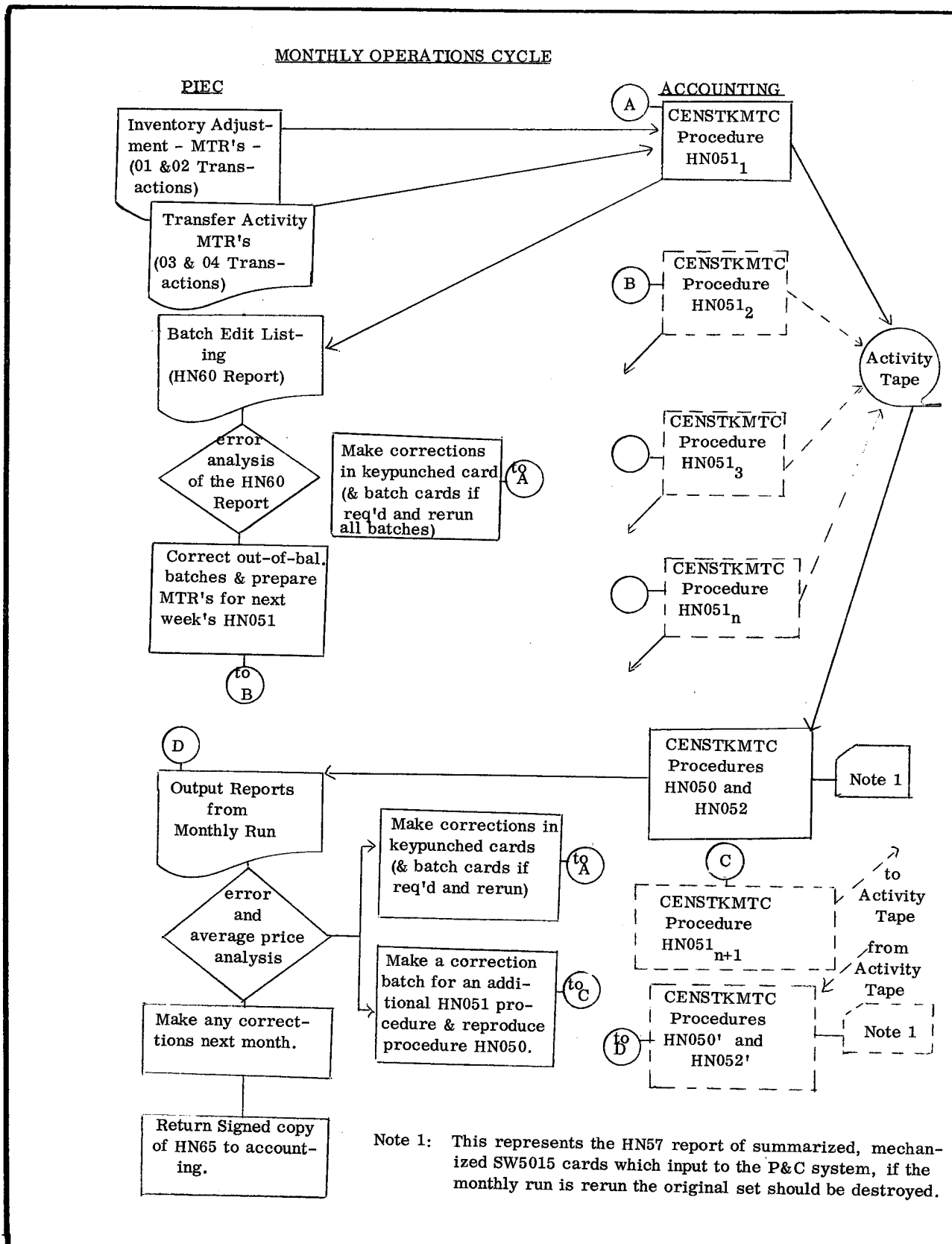


EXHIBIT 3

ENGINEERING
CENSTKMTC PROCEDURE
PROCESSING REQUEST AND SOURCE
DOCUMENT TRANSMITTAL

Date

DISTRICT ACCOUNTING MANAGER (MACHINE) _____:

Arrange to process the CENSTKMTC program as indicated utilizing the attached source documents:

Yes No
 Weekly Program HN051 (if "yes", check one "yes" below)

Yes No
 This is an initial run for a new month's processing.

This is a subsequent run for this month's processing.

This is a rerun of all existing batches. Pull existing keypunch cards and change to read as indicated in the attached documents (correct batch card if indicated). Include new source documents if attached.

This is an additional run for corrections following an incorrect processing of HN050.

Yes No
 End-of-month program HN050 & HN052 to be processed after any procedure indicated above (if "yes", check one "yes" below and complete run card data).

Yes No
 This is the initial run for this month's processing.

This is a rerun; do not use previously punched HN57 report.

RUN CARD DATA

_____ Central Stock Location Code (Area Code)

_____ Composite Tax Factor

0 _____ Authorized Estimate Number (may be blank)

_____ Serial Number for SW-5015 Output

_____ Deferred Tax Factor according to the last notice from the Accounting Department.

After data has been key punched and key verified, return all source documents.

Plug-In Equipment Coordinator

Attachment as indicated:

MTR source documents

"Change-to-read" corrections for previously keypunched source documents

Batch card information

(c) Run control card:

The run control card for HN051 is prepared by Machine Accounting personnel and filed with the MTR activity cards prior to processing. The central stock location code and the run date are inputted by the card.

(d) MTR activity file (tape GZ.HN051. MTRACTDS):

This tape file is the cumulative record created from the batched MTR activity cards. The batches which are in balance are written on the tape. A blank tape is mounted for the first processing of HN051 each month. Subsequent processings, within a month, update the original tape. Batches can be run any time previous to the central stock monthly run.

2.03 To Program HN050 and HN052

(a) Run control card:

The run control card for program HN050 is prepared by Machine Accounting personnel using information furnished by the PIEC. This information includes: Central Stock location code, composite tax factor, authorized estimate number, routine estimate number (if any), deferred tax factor, add pack and serial number for SW-5015 output.

(b) MTR activity file (GZ.HN051. MTRACTDS):

After the activity file has been updated by the last HN051 procedure of the month, it is sorted into processing sequence for input into the monthly procedures.

(c) Central stock file (GZ.SORTD. CENSTK10):

The central stock file is the cataloged record of the central investment inventory as it was after the previous monthly update. This file is the status record which will be updated by the MTR activity file.

2.04 Input Transactions

The basic input transactions of inventory adjustments and transfers to and from the central stock location are subdivided and coded for machine processing. The transaction codes are 01, 02N, 02A, 02, 03 and 14. See the description of input forms for card column entries.

(a) "01" transaction:

This transaction initiates a delete of all units for the PR number of the year and account code entered. There must be a matching record on the central stock file to delete or a "No Match" error will occur. The quantity of units field, money fields, and description for not require information for this transaction.

(b) "02" transaction (create):

The central stock computer programs require an established initial file of valid Property Record (PR) numbers. This allows a "no-match" error to be generated when an attempt is made to add or remove an invalid PR number item for central stock.

This file must be created during execution of program HN050 under option "2" with "02" record addition transactions using zero quantity, zero material and zero "In-Place" costs. These columns must be completely zero filled.

The initial file should be carefully created with attention to accurate account codes for predominant usage and good descriptions (from the PR catalog), and should be as complete as possible. This operation should only be done once unless the entire central stock is to be initialized again for a restart.

(c) "02N" transaction:

This transaction is used to make additions to the valid list of PR numbers after the initial file is created. It should be used when the first plug-in of a new PR number is to be entered on a "03" transaction. This will update the valid list and provide for the acceptance of the new PR item on a "03" transaction. The "02N" transaction should be made out like a "02" transaction (create) with one addition: card column 80 must contain an "N".

(d) "02" transaction:

This transaction is used to make record addition to the central stock inventory due to purchase of PI equipment. If the purchase is for new equipment from Western Electric, the in-place cost field should be left blank; in this case, the computer will figure the in-place cost. If there is no matching PR number on file, the number will be added to the valid list as defined in the activity card; these transactions must be carefully reviewed to protect against invalid numbers being created by errors. If there is no matching year, a new year will be added. If there is no matching account, the transaction will be added into some previously defined account (a check for this is explained in the description of the HN54 report).

(e) "02A" transaction

This transaction is used to make adjustments (corrections) in inventory records. An adjustment can be made in units and/or material amount and/or in-place cost amount. The amounts shown on the input document should be the positive or negative amount of the adjustment; negative amounts will be indicated by circling with red the negative amount on the input document (i.e., -10 units would be (10)). An adjustment record must match the central stock record being adjusted by PR number, year, and account code.

(f) "03" transaction:

This transaction represents a transfer of material into the central stock from an outlying equipment location in the area on a "C to C" basis. Transfers into the central stock must have a matching record on the valid list of PR numbers (i.e., a new PR number cannot be defined by this transaction). If records are matched by PR number but not by year, an "03 ADD" will be generated and the record will be added to the central stock file. Records matching on PR number and year will be added to the file. All transactions will be added to the account code already defined on the file.

(g) "14" transaction"

This transaction represents a transfer of material out of the central stock to a outlying equipment location in the area on a "C to C" basis. The material in file with the oldest year will be transferred first by the program.

When the units for that year are exhausted, it will continue to transfer units from the next oldest year. If the transaction represents a transfer for more units than are on file, all that are available will be transferred, and the balance will appear on a nonprocessed activity report (HN59 report).

The mortality information of the unit transferred, will not necessarily be correlated with the date stamp of the unit sent to the field.

2.05 Input Processing Sequence

The input to weekly program HN051 is processed in batch sequence. Each transaction is given a serial number to aid in identification in the various output reports. A batch is read and totaled; if the batch card total is equal to the accumulated totals the transaction in that batch will be written on the activity tape. In order to speed the manual checking process of the batch edit list (the HN60 report) and to increase the accuracy, it is recommended that the various input transaction types be put in separate batches.

The input to the monthly programs HN050 and HN052 is the activity tape from the weekly procedures. Prior to the monthly processing, this tape is sorted to take it out of batch sequence and put it in the proper sequence for the monthly processing:

PR#	Year	Acct.	01 transaction
low,	low,	low,	
..	
,	,	,	, 02 transaction
			(minor items last)
..	
,	,	,	, 03 transaction
		(through)	
PR#	Year	Acct.	01 transaction
high,	high,	high,	
..	
,	,	,	, 02 transaction
			(minor items last)
..	
,	,	,	, 03 transaction
		(then)	
PR#	14 transactions		
low,			
	(through)		
PR#	14 transactions		
high,			

This sequence provides that all inventory adjustments and transfers into the central stock (01, 02, and 03 transactions) are made prior to any units being transferred from the central stock (14 transactions). This assures that the oldest mortality year on hand will be sent out first (i.e., first in-first out accounting).

2.06 Material Transfer Report - Form CS-3

(a) MTR Form CS-3 (Exhibit 4) is a multi-copy form designed for use in transferring material from central stock to outlying equipment locations within an area. The following format is recommended for the form:

<u>Copy</u>	<u>Color</u>	<u>Route</u>	<u>Note</u>
1st	White	PIEC→Acct'g→PIEC	1
2nd	Blue	PIEC→Stock→C.O.	
3rd	Green	PIEC→Stock→C.O.→PIEC	2
4th	Yellow	PIEC→Stock	

Note 1: The white copy should be held by the PIEC until the green copy is received.

Note 2: Upon receipt of the PI's by the Plant Department representative, they should be checked immediately against the MTR and then the green copy returned to the PIEC.

If the recommended format is not used, the forms should clearly indicate how they are to be used.

(b) The top section of this form provides space for the following information:

<u>Item</u>	<u>Information to be Recorded</u>
Ship to:	Address of the receiving central office.
Ship from:	Pre-printed address of the central stock location.
Bill of Lading:	The shipper's bill of lading number under which the material is shipped.
Shipped Via:	How shipped. Usually the name of the trucking company which will transport the material.
Date & Time Shipped:	To be entered by the plug-in unit stockman at the time of shipment.
Hold for:	The outlying equipment location where the material is to be installed.
TCO:	The circuit order or other request number for the material.
Received by:	The signature of the person accepting the shipment at the receiving location.
Date & Time Received:	To be entered by the receiver.
Charge Plant Labor to (Optional)	The estimate and account(s) to which the Plant forces should charge their time while installing the material.
Ship by:	The latest date when the material is to be shipped from the central stock location.

(c) The body of Form CS-3 contains 43 columns for entry of data to be used in connection with central stock computer program HN050. The information required in each column is as follows:

<u>Columns</u>	<u>Information to be Recorded</u>
All	Do not zero fill
1 - 2	Transaction code - designates the type transaction and will be the digits "14" on all transfers from central stock.
3 - 7	A five-digit MTR number to identify the transactions. These may be serially numbered, or a local numbering system may be used if desired.
8 - 12	The location code of the location where the material is to be installed.
13 - 18	Property Record (PR) number - a six digit number for each equipment entry as assigned by the Catalog of Central Office Property Record Items (See Note 1). PR numbers for minor items should not be entered. The cost of these units is included with the associated major items by the computer program (See Note 2). Line entries for such minor items must not be keypunched. These are provided on the MTR for shipping information only.
19 - 22	A four-digit number representing the account code at the outlying equipment location. This account code does not have to match the code on the central stock file. The numeric characters of the account code should be entered without change. The digit "1" in Column 22 represents a "C" account suffix, and the digit "2" represents a "TC" account suffix. RIGHT JUSTIFY.
23 - 25	A three-digit number to designate the quantity of units to be shipped from central stock. RIGHT JUSTIFY.
26 - 43	Drawing or equivalent description of unit. This should be limited to 18 characters and spaces.

EXHIBIT 4

ILLUSTRATION OF TRANSFER
"OUT" OF CENTRAL STOCK
(CS-3)

LOCAL
FORM
NUMBER

**SOUTHWESTERN BELL
TELEPHONE COMPANY**

**MATERIAL TRANSFER REPORT
(MTR)
PLUG IN EQUIPMENT**

FORM
PAGE ___ OF ___

SHIP TO: _____
RECEIVING
LOCATION

SHIP FROM: _____
SHOW AREA OR STATE
AND ADDRESS WITH
ZIP CODE
CENTRAL STOCK

HOLD FOR _____ TCO _____

RECEIVED BY _____

DATE RECEIVED _____ TIME _____

NOTE: CHECK SHIPMENT AND NOTE ON BILL OF LADING ANY DAMAGE OR MISSING BOXES. CALL 376-5577 AND REPORT ANY PROBLEM.

BILL OF LADING NUMBER _____

SHIPPED VIA _____

DATE SHIPPED _____ TIME _____

TR CD		MTR NUMBER						TO AREA NUMBER						CHARGE PLANT LABOR TO:		SHIP BY					
1	2	3	4	5	6	7	8	9	10	11	12	ESTIMATE		ACCOUNT(S)							
PR NUMBER												ACCT CODE				UNITS		DRAWING OR EQUIVALENT		LOC. * CODE	
13	14	15	16	17	18	19	20	21	22	23	24	25	26					43			

ORIGINATED BY _____

APPROVED BY _____
(TITLE) DATE _____

* DO NOT KEY PUNCH COL. 22 1→C, 2→TC

WHITE ACCOUNTING→ENGINEERING
BLUE CENTRAL OFFICE
GREEN CENTRAL STOCK→CENTRAL OFFICE
YELLOW CENTRAL STOCK FILE ←PIEC

central stock. To be entered by the PIEC. Use of this is optional.

2.07 Material Transfer Report Form CS-4

Note 1: In order to account for all of the minor item investment which is ordered to the "C" accounts but not to distort the average price of the associated major items, minor item investment "buckets" should be maintained in the CENSTKMTC system. There should be one investment bucket per account maintained in the system; the bucket should be designated by a PR number having leading nines followed by the account code (Columns 19-22):

<u>Acct.</u>	<u>5 Digit PR</u>	<u>6 Digit PR</u>
571	99571	999571
572	99572	999572
2572	92572	992572
3571	93571	993571
3572	93572	993572

(a) MTR Form CS-4 (Exhibit 5) is a form designed for use for all central stock transactions other than the transfers out covered by Form CS-3 (i.e., Form CS-4 should be used for 01, 02, 02A, 02N, and 03 transactions). For 01 and 02 type transactions, Form CS-4 is strictly a computer input form for use by the PIEC and Accounting; this use requires two copies. For 03 transactions, several form arrangements can be used. One scheme uses a two copy CS-4 form for Accounting as described above and a RMN for PI movement. Another uses a multicopy CS-4 form similar to the CS-3 form for both PI movement and accounting purposes. The method that is used should be the one that most efficiently handles the movement of surplus PI's back to the central stock as well as the accounting of that movement. Some of the uses of Form CS-4 are shown below:

When a new major unit is received from Western Electric that should have minor item loading, the loading should be included when the unit is inputted; this means that the appropriate minor item loading bucket should be reduced by the loading amount in the same month. The loading reduction should be accumulated so that only one adjustment transaction is needed per minor item PR number per month. In January of each year, the remainder of the minor item investment should be adjusted to current year mortality in the P&C and CENSTKMTC systems.

<u>Copy</u>	<u>Route</u>	<u>Note</u>
1	PIEC → ACCT'G → PIEC	1
2	PIEC	2
1	PIEC → ACCT'G → PIEC	1
2	PIEC	2
3	PIEC → C.O. → STOCK → PIEC	3
4	PIEC → C.O.	
1	PIEC → ACCT'G → PIEC	1
2	PIEC → C.O. → STOCK	4
3	PIEC → C.O. → STOCK → PIEC	2
4	PIEC → C.O.	
1	PIEC → ACCT'G → PIEC	1
2	PIEC → STOCK → C.O. → STOCK	5
3	PIEC → STOCK → C.O. → STOCK → PIEC	2
4	PIEC → STOCK → C.O.	

(d) Space has also been provided for a two-digit Location Code to be used by the stockman in locating the material in

EXHIBIT 5

Form CS-4

ILLUSTRATION OF TRANSFERS
 "INTO" CENTRAL STOCK
 (CS-4)

LOCAL FORM NUMBER _____ PAGE ____ OF ____

MATERIAL TRANSFER REPORT (MTR) SHOW AREA OR STATE AND ADDRESS WITH ZIP CODE

MTR IN EQUIPMENT CENTRAL STOCK, FROM: _____ TO: _____

TR CD	MTR NUMBER	FROM AREA NUMBER	TRANSFERRED TO:	YEAR
1	2	3	4	5
6	7	8	9	10
11	12	13	14	15

PR NUMBER	ACCT CODE	UNITS	DRAWING OR EQUIVALENT	SENDING LOCATION	DIRECT MAT'L COST	IN PLACE COST	YEAR
13	14	15	16	17	18	19	20
21	22	23	24	25	26	27	28

0 → ZERO 1 → LETTER "O"
 2 → TC 3 → C

ORIGINATED BY _____ DATE _____
 APPROVED BY _____ DATE _____
 (TITLE)

Note 1: When purchased or surplus units are received, or when inventory adjustments are made, this copy is sent for keypunching to enter the accounting transaction into CENSTKMTC.

Columns

Information to be Recorded

1-2

Transaction codes should be present as follows:

- "01"
- "02" - for "02N" and "02A" transactions the alphabetic designation will be entered in column 80
- "03"

Note 2: This copy is retained by the PIEC as his record of the keypunch document sent to accounting.

3-7

A five-digit MTR number to identify the transaction. See Page 10

Note 3: In this case, the last two copies are sent to the C.O. where the PI items that are surplus are entered on the document. When the PIEC receives the third copy, he uses it to complete copies one and two in the required input format.

8-12

The area number of the location from which the material was removed on "03" type transactions. These columns should be left blank for "01" and "02" type transactions.

13-18

Enter same information as described in Page 10 for Form CS-3.

Note 4: In this case, the last three copies are sent to the C.O.; the middle two copies are then used as the shipper to return units to the cntral stock.

19-22

Depending on the transaction type:

- "01" - the account of the PR number and year to be deleted.
- "02" - the account as defined for a PR number already on the valid list or the account for a new PR number.
- "03" - the account of the "from" location.

Note 5: This case is similar to the previous one except that the forms are sent to the Stockman prior to being sent to the C.O. to initiate packing material shipment.

A four-digit number representing the account code. The numeric characters of the account code should be entered without change. The digit "1" in Column 22 represents a "C" account suffix, and the digit "2" represents a "TC" account suffix. RIGHT JUSTIFY

(b). The top section of Form CS-4 provides space for the following information:

<u>Item</u>	<u>Information to be Recorded</u>
From:	The location or source from which the material was obtained.

23-25

In the units field, depending on the transaction type:

- "01" - can be blanks
- "02N"- Zeroes
- "02A" - the quantity of units (RIGHT JUSTIFIED) equal to the adjustment amount (see Note 6)
- "02" - the quantity of units (RIGHT JUSTIFIED) to be added.
- "03" - the quantity of surplus units (RIGHT JUSTIFIED) to be shipped to stock.

(c) The body of Form CS-4 contains 60 columns for entry of data to be used in connection with the central stock computer programs. The information in each column is as follows:

<u>Columns</u>	<u>Information to be recorded</u>
All	Do not zero fill.

<u>Columns</u>	<u>Information to be Recorded</u>
26-43	Drawing number or equivalent description of unit (except in this case of an "01" transaction when the field can be left blank).
44-50	Direct material cost - The bare material cost, including normal transportation as billed by the Western Electric Company (RIGHT JUSTIFY). In the case of "01" transactions, the field can be left blank. (See note 6)
51-57	In place cost depending on the transaction and source of purchase: "01" - can be blanks "02" - should always be calculated and entered except in the case of new material from Western Electric when the field is left blank and the computer calculates the cost using the current estimate for the year's deferred tax credit factor. (For "02A" see Note 6) "03" - should always be calculated for PI's installed prior to central stock, and should be entered from the HN56 report for PI's installed after the central stock was in operation. RIGHT JUSTIFIED
58-59	Year - the year the material was initially placed in service. For "01" transactions, enter the year shown on the record being deleted.
80	Should be blank except in the case of "02A" and "02N" transactions when this column should contain an "A" or "N".

NOTE 6: When using an "02A" transaction (adjustment entry) negative adjustments should not have a minus sign but should be circled in red.

3. OUTPUT

3.01 From Program HN051

Print/Punch Tape:

.An output tape containing the weekly HN60 report is outputted from program HN051. This tape is used in a print/punch utility program to obtain the paper copy of report HN60.

3.02 From Print/Punch Utility For HN051

HN60 Report (MTR Activity Card Edit and Batch Total Listing):

(a) The HN60 report is a listing of the detail activity entered into the edit listing is of all batches and has a notation at the end of each batch advertising the batch as "in balance" or "out of balance." Those batches that are in balance are written on the activity tape. The "out of balance" batches must be checked to determine that all documents were keypunched and keypunched correctly. The necessary corrections should be made, and those batches entered in another processing run of program HN051.

(b) As each transaction is processed in program HN051, a special number is assigned. If the batch is in balance, the serial number is carried with that transaction into the monthly reports. This number then can be used to validate the monthly output with the monthly input (the in balance batches of various weekly processings of program HN051).

(c) The serial number will appear as XXYYZZZZ. XX is the month and YY is the day of the HN60 report. ZZZZ is the number of the transaction within the HN60 beginning with 0001 and ending with 9999.

(d) Besides the page headings and the balance notation at the end of each batch, each MTR transaction appears as keypunched across the report as follows:

<u>Column Heading</u>	<u>Explanation (See Note 1)</u>
IN-PLACE COST	The in-place cost or blanks as defined by card columns 51-57. (See Note 2)
YEAR PLCD	The year material was originally placed in service as defined by card columns 58 and 59.
BATCH NUMBER	Defined by the batch transmittal information initiated by the PIEC, but appears as keypunched by Accounting in card columns 77-79.
SERIAL NUMBER	The serial number of the transaction as defined by the program HN051.

NOTE 1: The explanation assumes that the input cards were for a normal month's processing and not a file create. The card image for that procedure is explained under "Input Transactions."

NOTE 2: If a negative amount was indicated on a "02A" transaction (02 adjustment), a "CR" (indicating "credit") will appear to the right of the field.

3.03 From Programs HN050 and HN052

Print/Punch Tape:

An output tape containing the monthly reports is outputted from program HN052. This tape is used in a Print/Punch utility program to obtain the monthly printouts and/or punched cards.

<u>Column Heading</u>	<u>Explanation (See Note 1)</u>
CARD TYPE	The transaction code from card column 1 & 2; the special notation on certain 02 transactions ("A" or "N") from card column 80 is also printed.
FORM NUMBER	The MTR number from card columns 3 - 7.
AREA CODE	The location code or blanks from card columns 8 - 12.
P.R. NBR	The property record number from card columns 13 - 18.
ACCT CODE	The account code from card columns 23 - 25.
NUMBER UNITS	The number of units, zeros, or blanks from card columns 23 -25. (See Note 2)
DRAWING NUMBER	The drawing number or blanks as defined by card columns 26 - 43.
DIR MATL COST	The direct material cost or blanks as defined by card columns 44-50. (See Note 2)

3.04 From Print/Punch Utility For HN052

(a) HN51 Report (Activity Error Report):

The HN51 report is a listing of the transactions which were found to be in error during the monthly processing. These transactions were aborted and written on the HN51 when the monthly edit procedures detected the error; their intended purpose was not carried out - their only effect on the remainder of the reports is in their omission (this may or may not be important but should be determined).

The report contains an exact card image for each transaction in error. It also has an error flag to determine the type error which is involved. Finally, the report has the serial number of the transactions in error to identify its source on the input HN60 report.

The report heading has some abbreviated input field names and card column notation to aid in the identification of card columns in error. Exhibit 6 is a table explaining the various error flag messages which should be of use in error analysis.

(b) HN54 Report (Add-Delete Report):

The HN54 report is an activity report depicting each "01", "02", and some "03" transactions which were not in error and, thus were processed in the monthly run. An "03" transaction only appears in the file when it adds units to a year not presently on file for an existing PR number. Depending on the transaction type, the line entries of the report will vary:

- "01" - A single line entry containing the previous balances representing the quantities deleted; the action designation for this line is "DELETED."
- "02N" - A single line entry containing the new zero balances for the new PR number - the action designation for this line is "ZERO ADD."
- "02A" - A double line entry; the first line contains the previous balances prior to the adjustment - the action designation for this line is "OLD"; the second line contains the new balances, after the adjustment - the action designation for this line is "ADJUSTED."

EXHIBIT 6

<u>ERROR FLAG</u>	<u>TRANSACTION TYPE(S) EDITTED</u>	<u>FIELD(S) EDITTED (NOTE 1)</u>	<u>ERROR ANALYSIS (NOTE 2)</u>
'Units'	02	Units	If units are zero and the PR number, year and account code do not match with record on Central Stock file.
'No Match'	01, 02A	PR, Yr, Acct *****	If fields do not match with a record on Central Stock file.
	03, 14	PR ***	If field does not match with record on Central Stock file.
'S/B Zeros'	02N	Units, DM-cost, IP-cost *****	If fields are not zeros.
'Match PR'	02N	PR ***	If PR record already exists on Central Stock file.
'CS REC NEG'	02A	Units, DM-cost, IP-cost *****	If adjust transaction leaves any of the edited fields negative on Central Stock file.
*****	01, 02, 02A, 02N, 03, 14	Transaction *****	If transaction is not 01, 02, 03 or 14.
		MTR *****	If last three digits of MTR number are not numeric.
		PR ***	If PR number is not numeric.
		Acct ***	If Account code does not have a 1 or 2 in ones digit.
*****	03, 14	Area *****	If first position is not less than zero (alpha or special character) or last four positions are not numeric.
*****	02, 02N, 03, 14	Units *****	If field is not numeric or is negative.
		Drawing Number *****	If field is blank.
*****	02, 02A, 02N, 03	Direct Mat'l Cost *****	If there is a blank in the units position of the Material Cost field, or if the field is not numeric.

EXHIBIT 6

(continued)

<u>ERROR FLAG</u>	<u>TRANSACTION TYPE(S) EDITTED</u>	<u>FIELD(S) EDITTED (NOTE 1)</u>	<u>ERROR ANALYSIS (NOTE 2)</u>
*****	02, 03	Direct Mat'l Cost *****	If field is zero.
*****	02, 02A, 02N, 03	In Place Cost *****	If field is blank (except for current yeat on 02 and 02A) or if field is not numeric.
*****	02, 02N, 03	In Place Cost *****	If field is negative.
*****	02, 03	In Place Cost *****	If field is zero.
*****	02, 02A, 02N, 03	Year ***	If field is less that "51" or greater than current year.

NOTE 1: Asterisks indicate that the field in error will be underscored with asterisks.

NOTE 2; Frequently the right-most position in the units, direct material cost, and in-place cost fields will contain a computer convention for the sign of the number (to accurately determine the sign of a number ending in zero, refer to the HN60 report):

<u>NEGATIVE</u>	<u>NUMBER</u>	<u>POSITIVE</u>
J	1	A
K	2	B
L	3	C
M	4	D
N	5	E
O	6	F
P	7	G
Q	8	H
R	9	I
SPACE	0	ZERO (or SPACE)

"02" - This transaction can cause either a single line or a double line entry depending on the circumstances. A single line entry will appear when the PR number or the PR number and year, are not already on file; the line will contain the new balances, and these will be equal to the transaction amounts - the action designation will be "ADDED."

A double line entry will occur when the PR number and year already exists on file. The first line will contain the previous balances prior to the addition - the action designation for the line will be "OLD"; the second line will be the new balances after the addition - the action flag for this line B "UPDATED."

"03" - A single line entry containing new balances which are equal to the transaction amounts; this line appears when an "03" transaction adds units in a year not previously on file for an existing PR number - the action designation for the line is "03 ADD."

The report entries appear across the page under the following headings:

<u>Column</u>	<u>Explanation</u>
PR	The property record number as defined as by the transaction.
ACCT	For PR numbers already existing on file, this is the account on file. For new PR numbers, this should be the account code on the transaction.
DRAWING NO.	For PR numbers already existing on file, this is the drawing number on file; for new PR numbers, this is the drawing number on the transaction and will define the file description.
YR	The mortality year of the transaction.
UNIT	The total number of units on file before and/or after the transaction.
IP-COST	The total in-place cost before and/or after the transaction.
IN	The total number of units added to the file since the beginning of the year or since the last "01" transaction, before and/or after the transaction.

<u>Column Heading</u>	<u>Explanation</u>	<u>Column Heading</u>	<u>Explanation</u>
OUT	The total units sent from the file since the first of the year or since the last "01" transaction, before and/or after the transaction.	PR	The PR number of the record with zero units.
M-ACTION	The action designation for the line (see previous discussion of the entries).	ACCT	The account code of the record with zero units.
FLAG	On any transaction, where the program entered the transaction into the account on file which was different from the account on the transaction, an "ACCT" flag will appear. These should be checked to determine if the units were added into the same account in both the CENSTKMTC system and the property and cost system.	DRAWING NO.	The drawing number associated with the PR record with zero units.
SER-NBR	The serial number of the transaction causing the line entry.	YR	The year of the record with zero units.
(c) HN55 Report (Zero/Credit Record Listing):		UNIT	Zero units.
The HN55 report is a listing which identifies records (PR, YR, and ACCT) on the central stock file with a zero units balance. The report entries appear across the page under the following headings:		M-COST	If units are zero, so should be the base material cost. (See Note 1).
		IP-COST	If units are zero, so should be the in-place cost. (See Note 1)
		IN	The number of units that have entered the stock for the calendar year or since the last "01" transaction.
		OUT	The number of units that have left the stock for the calendar year or since the last "01" transaction.

Note 1: Under the present program, no residue costs should be present for a record with zero units. Under a previous version, residues were possible - the program allowed "03" transactions for minor items to add to a record with zero major units.

(d) HN56 Report (SW-5015 Transfer of Plug-in Equipment - Detail):

The HN56 report is an activity report depicting each transfer between the central stock and the outlying equipment locations that was initiated by an "03" or "14" transaction. This report is the detail of each individual transfer and becomes the Engineering specification record. Each transfer appears twice in the report; once as a debit and once as a credit (once at the central stock location code and once at the Plant location code).

The report is organized so that it begins printing at the lowest location code, the lowest account code, the lowest PR number, and the lowest year and ends at the highest location code, the highest account code, the highest PR number and the highest year. Whenever the account code changes, a total is printed and a new page is started. The total represents the net change in the investment at the location in the given account due to mechanized PI transfers. Starting a new page allows for separation of the record by location and account if desired.

Beside the page headings and location account totals, the detail for each side (debit and credit) appears (as separate entries according to location code and account) across the page under the following headings:

<u>Column Heading</u>	<u>Explanation</u>
AREA	The location code of one side of a mechanized transfer.
ACCT	The account code of one side of a mechanized transfer.
MTR	The Material Transfer Report number of the transfer.
AUTH	The authorization for the transfer; annual plug-in estimated for "14" transactions and routine for "03" transactions.
PR#	The property record number of the unit(s) transferred.
EQCT	The equipment category (blank in non-DPCR).
YR	The mortality year of the transfer.
DRAWING NO.	The drawing number of the unit(s) transferred.
M-COST	The total bare material cost of the unit(s) transferred (See note 1).
UNIT	The total number of units transferred (see Note 1).
IP-COST	The total in-place cost of the unit(s) transferred (see Note 1).
SER-NBR	The serial number of the transaction as defined on report HN60.
NOTE 1:	A credit entry will have a minus sign to the right of the field. For the central stock location credit entries are "14" transactions. For other locations, credit entries are "03" transactions.

(e) HN58 Report (SW-5015 Transfers of Plug-In Equipment Summary):

The HN58 report is a summary report of the mechanized SW-5015 transfers resulting from PI movement between the central stock and the field locations. It was originally intended that Accounting should prepost from the report, but it required a great deal more posting than was necessary. It is now included for information.

The posting problem stems from the fact that the report is summarized by type of transaction ("03" and "14"). The "03" transactions appear with the location code and account code of the plant location under the "FROM" column. The "14" transactions appear with the location code and account code of the central stock location under the "FROM" account. When the "FROM" account or location changes, a new page will be started.

Within a section of the report (same "FROM" location and account), the information is separated by credits and debits. In the top half of the section, the "T0" location and account is blank and the credit entries are summarized by mortality year. In the bottom portion of the section, the debit entries appear summarized by the "T0" location code, then by the "T0" account code, and finally by mortality year. If a total for the debits and credits is calculated for a section, it will balance to zero.

(f) HN59 Report (Nonprocessed Central Stock Transfer Activity Listing):

The HN59 report is an activity report which lists each "14" transaction (those which were not shown as errors on the HN51 report) which the machine could not complete or could only partially complete due to a lack of units on file. The balance of units not transferred appear on the printout; a new "14" transaction should be prepared for that balance (so long as the original transaction was properly prepared). Normally, if units were sent from the stock but there was no investment to be transferred, there is a problem to be reconciled.

The report contains a card image of the transaction and the number of units transferred and/or not transferred and the serial number of the transaction across the

report as follows:

<u>Column Heading</u>	<u>Explanation</u>
T	Transaction - always 14
MTR	MTR number as keypunched
AREA	Location code as keypunched
PR	PR number as keypunched
ACC	The "T0" account code as keypunched
UN	The number of units intended to be transferred as keypunched
DRAWING	Drawing number as keypunched
M-COST	Material cost - should be blank
I-COST	In-place cost - should be blank
---8	Batch number as keypunched
TR-UNITS	Number of units actually transferred
NON-PROC	Number of units not transferred
SER-NBR	The serial number of transaction

(g) HN62 Report (Plug-In Equipment Listing):

The HN62 report is the investment inventory report for the central stock location. It gives the status of units and their investment by PR number and year after the monthly processing. This is the CENSTKMTC, reconcilable inventory record. The report is printed from the lowest PR number and year to the highest. After the last listing for each PR number, a PR ITEM TOTAL is listed.

The investment inventory record for each PR number and year is printed across the page under the following headings:

<u>Column Heading</u>	<u>Explanation</u>
DRAWING NO.	The drawing number for the PR type as originally defined by the zero file, an "02N" transaction, or the first "02" transaction for the RR type.
NAME OF UNIT	The descriptive name of the unit (blank for non-DCPR areas).
EQUIP CATGY	The equipment category of the unit (blank for non-DCPR areas).
PR NO.	The property record number for the unit as originally defined by the zero file, an "02N" transaction, or the first "02" transaction for the unit type.
ACCT	The account code(s) for the PR type as originally defined by the zero file; after the zero file has been established, only one account code may be entered for a new PR type - this is accomplished by an "02N" transaction or the first "02" transaction for the PR type.
NUMBER UNITS	The total units on record for a PR number and year following all of the month's activity.
MATERIAL COST	The total base material cost for the units recorded in previous column.
INPLACE COST	The total in-place cost for the units recorded under "NUMBER UNITS."
AVG IN-PLACE COST	The average in-place cost determined by the quotient of "INPLACE COST" divided by "NUMBER UNITS"; this is the price at which units will be transferred out unless altered by "01," "02", and/or "03" transactions in the next month's processing.

<u>COLUMN HEADING</u>	<u>EXPLANATION</u>
YR PL	The mortality year of the units on that line.
ACTIVITY IN	The number of units brought into the stock since the beginning of the calendar year or since the last "01" transaction for that PR number and year. "03," "02," and, positive and negative "02A" transactions will be reflected.
ACTIVITY OUT	The number of units sent out ("14" transactions) of the stock since the beginning of the calendar year or since the last "01" transaction for that PR number and year.

(h) HN63 Report (Summary of Plug-In Usage by Account from Central Stock Locations: Area#):

The HN63 report is a monthly activity report summarizing the "14" transaction activity for the month; the totals are accumulated based on the "T0" account code (the code shown on the "14" transaction for the outlying equipment location). The report can be used for Division of Revenue purposes to prorate the total central stock investment (as reported on the HN64 report) between accounts according to recent usage. There is a subtotal for each exchange and toll classification and a grand total for the 57 subdivision. This information will also be useful in calculating the annual plug-in factor. There are three column headings for the report:

<u>COLUMN HEADING</u>	<u>EXPLANATION</u>
ACCOUNT CODE	The account code being reported. This is determined by the outlying equipment account designated on Form CS-3 for each "14" transaction.

<u>COLUMN HEADING</u>	<u>EXPLANATION</u>
TOTAL USAGE	The total in-plate cost for all "14" transactions in the month.
REMARKS	This is available space for notation. There are no machine generated remarks.
(i) HN64 Report (Total Investment for Account by Year for Central Stock Location Area#):	

The HN64 report is the investment by mortality year report for the central stock location. It is a summary of the investment reported on the HN62 report (Plug-In Equipment Listing). The report is summarized by account and mortality year within account for reconciliation with the Accounting investment record: Report - FV71 BLDGS, LAND, COE, PBX, AND OSP ACTUAL COST ACCTG MORTALITY (areas converted to DOPAC) or the Division Summary of Program 6820 - C.O. BLDGS AND LAND MORTALITY DATA 100.1 (for non-DOPAC areas). The report entries appear under the following headings:

<u>COLUMN HEADING</u>	<u>EXPLANATION</u>
ACCOUNT CODE	The account code being summarized. Each account code by which PI units are currently listed in the central stock file will appear in the summary beginning with the lowest account.
YEAR PLCD	The mortality year represented by investment within an account.
YR-PL TOTAL	The total 100.1 investment for a mortality year within an account on file in the central stock location.
ACCOUNT TOTAL	The total 100.1 investment for an account. This line appears after the last mortality year on file for a certain account.

<u>COLUMN HEADING</u>	<u>EXPLANATION</u>
TOTAL C/S RECORDS	The total number of central stock records on file for all accounts. This entry appears once, at the end of the report.
TOTAL C/S INVESTMENT	The total 100.1 investment for units on file in the central stock. This entry appears once, at the end of the report.
(j) HN65 Report (Summary of Plug-In Transfers To and From Central Stock Location Area#):	

The HN65 report is a summary of the mechanized transfer ("03 and "14" transactions) for a month's activity. Accounting uses this report to prepost the net change in the investment stemming from mechanized transfers within an area. Prior to this operation, Engineering must authorize this report and return it to Accounting. The entries appear across the page under the following headings:

<u>COLUMN HEADING</u>	<u>EXPLANATION</u>
LOCATION CODE	The area number of the transfers being reported on the line.
ACCOUNT CODE	The account code relating to the transfers being reported on the line.
YEAR PLCD	The mortality year relating to the transfers being reported on the line.
SUMMARIZED AMOUNT	The net of the transfers reported under the ESTIMATE AMOUNT and ROUTINE AMOUNT.
ESTIMATE AMOUNT	The transfers initiated by "14" transactions; these entries will appear as credit ("CR" to the right of number) for the central stock location code and debits elsewhere.

COLUMN
HEADINGEXPLANATIONROUTINE
AMOUNT

The transfer initiated by "03" transaction; these entries will appear as credits ("CR" to the right of number) for all location codes except central stock.

4. CHECKING

4.01 The purpose of checking is to assure that all transactions are originated, keypunched, and processed properly so that CENSKMTC records and Accounting records are in agreement and reflect, accurately, the Area PI investment.

4.02 There are two checking phases that are required: first, is the determination that the transactions were originated, keypunched and processed at all; second, is the determination that the transactions were originated, keypunched, and processed properly.

4.03 There are no mechanized aids for determining that MTR's were originated in every case as required. The PIEC should administer procedures to assure that: "03" and "14" transactions are originated for all plug-in movement between the stock and the plant locations (except for Like-for-Like) and "02" transactions are originated for every W.E. bill (but only one per item ordered; for instance; post serial number or MTR number to copy of specification), for every IO bill from out-of-state areas, and for every transfer form foreign areas within the same state.

4.04 There are two checks that all MTR's are keypunched. First the PIEC should match the returned keypunch source document with his retained copy of the original MTR. Second, the "batch in balance" process performed in program HN051 checks that each

line on every MTR was keypunched. The "batch-in-balance" notation is, also a signal that weekly processing of batches was completed properly.

4.05 The determination that all transactions were originated, keypunched, and processed properly is a subtle but important one. Both this determination and the previous one must be made prior to the authorization of the HN65 report by the Engineering Department.

4.06 The first check that transactions were originated and keypunched properly should be made on the weekly output, the HN60 report. This report should be sight checked for accuracy. All items not checked by the batch totals should be reviewed; transaction codes, PR numbers, account codes, drawing number, and etc. It is extremely important to check all "01" and "02" transactions at this point because this is the only report besides the monthly error report where those transactions appear exactly as keypunched. (Remember, just because a transaction is not on the error report, it is not necessarily correct). This is another reason to separate the various transactions types into separate batches.

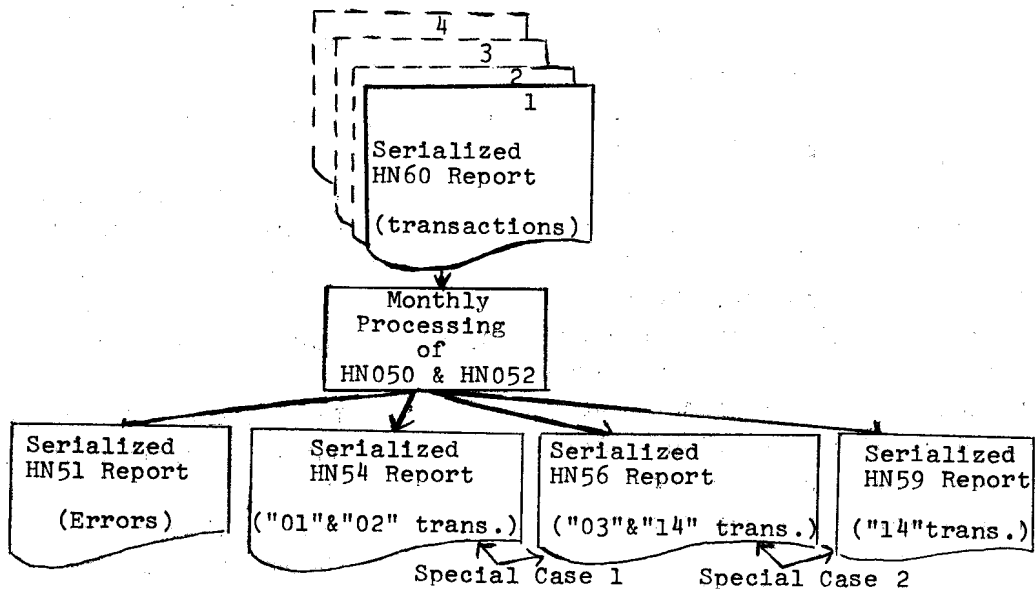
4.07 Further checking to determine that transactions were originated and keypunched properly should be accomplished by means of a through review of the monthly output documents. The first check will normally be of the HN51 report, the error report. Each error should be evaluated in order to ascertain its impact on the monthly run. Normally, when an "02A: transaction (or "01" - "02" combination) is in error, there is some corrective action indicated when there was no "14" transaction within the PR number and year). Generally, "03" and "14" transactions can be corrected in the next month's business.

4.08 A more complicated check to determine that transactions have been originated and keypunched properly, involves an analysis of the HN62 report. The "average in-place cost" is an extremely important indicator. This cost should always be within limits determined by the minimum and maximum price listed in the Western Electric price book, times the composite tax factor, plus a reasonable amount of minor item loading where appropriate (the loading should only consist of the exact number of minor units that can be used with the major unit). The PIEC should maintain a PR number table by years of these "reasonable" average prices. If the "average in-place cost" should change significantly from one monthly report to another or should get out of limits, the transaction(s) responsible should be isolated and checked.

4.09 The isolation process indicated above involves an understanding of the flow of transaction from the "in balance" batches of the weekly activity (HN60 report) through the monthly procedures ending in the output reports. Each individual transaction which is a part of an "in balance" batch in the HN60 report appears singularly on one of four activity reports; the HN51 report (errors), the HN54 report (primarily "01" and "02" transactions) the HN56 report ("03" and "14" transactions), and the HN59 report (primarily unprocessed "14" transactions). There are two exceptions to this rule. In some cases, "03" transactions appear on both the HN54 and HN56 reports; this occurs when there are not units on file for this PR number and year involved (an "03 ADD"). The other case occurs when "14" transactions appear on both the HN56 and HN59 reports; this happens when there are enough units on file to complete only a partial transfer.

FLOW OF TRANSACTION

FROM WEEKLY ACTIVITY REPORTS TO MONTHLY ACTIVITY REPORTS



4.10 Each individual transaction from an "in balance: batch on an HN60 report should appear on only one of the monthly activity reports except as noted by the two special cases.

Special Case 1: in the case of an "03ADD," the transaction will appear on both the HN56 and HN54 reports.

Special Case 2: in the case of a partial transfer, the "14" transaction will appear on both the HN59 and HN56 reports.

4.11 If there is a question regarding the processing accuracy of the monthly run, the transactions on the activity reports can be checked off against the HN60 report by serial numbers. This can be done to determine that all transactions which were inputted were, also, processed. The only transactions not checked off the HN60 report should be those in "out of balance" batches.

4.12 These are additional checks that should be made using the monthly print-outs. Origination and keypunching accuracy of "03" and "14" transactions should be checked by reviewing the HN56 report under the central stock location code. The report is in PR number sequence and the fields appear as keypunched. This allows a review to determine if there are transactions within a given PR number where the "DRAWING NO." does not agree with adjacent drawing numbers. Normally, if this occurs, a PR number has been originated or keypunched improperly.

4.13 A similar check of origination and keypunching accuracy for "01" and "02" transactions should be made. Although the check is a little more involved, it is

well worth the effort since an "02" transaction is the most likely to process when submitted in error. The "Drawing No. " of the PR number shown on the HN54 should be compared to the "DRAWING NO." of the transaction on the HN60 report by means of the serial number. This check will verify that the PR number was originated and keypunched properly.

5. UTILIZATION

This section is included to give some ideas of how the CENSTKMTTC system can be used. Typical operating conditions are described with possible actions outlines.

5.01 Program HN050 Run Options

Program HN050 is designed to be run four different ways:

Option 1: Central Stock Maintenance

This is the normal monthly run for processing the transaction activity which has been processed in program HN051.

Option 2: Central Stock Create

This is the run which initially creates the valid list of PR numbers. It normally will only be run once.

Option 3: Central Stock List

This run can be made at anytime to obtain an additional copy of the HN62 report. This copy will be same as that which is received with the monthly output.

Option 4: Central Stock Annual Activity
Counter Update

This run should be made once each year just prior to the monthly processing of January's activity. The option zeros the "IN" and "OUT" activity counters. Notification of Machine Accounting personnel by the PIEC is not required to initiate this processing.

The Machine Accounting personnel will initiate a particular option by coding on the run control card.

5.02 Creating

(a) A beginning file:

A beginning file of valid PR numbers is initialized by a deck of "02" (create) transactions (see Input Transactions) which are submitted for processing in Option 2 of program HN050. Once the file is created, Option 1, is used to maintain it.

(b) A new PR record:

A new PR record can be created by two methods. Normally the first, ordinary "02" transactions, which is submitted after the first units of a new PR type are received, will define the PR record. The drawing number and account should be carefully considered and checked prior to the "02" transaction being submitted. A second method of initializing a new PR record is to submit an "02N" transaction prior to the first, ordinary "02" or "03" transaction for the new unit.

(c) A new year within a PR record:

If there is a PR record on file, a new year can be initialized by an "02" or "03" transaction. There is no point in maintaining several years with zero balances, but at least one year should be left on file so long as activity is expected within a PR type; this will keep the PR type on the valid list so that "03" transactions can create a new year when required.

5.03 Accounting for Plug-In Movement and Changing Stock Levels

(a) Adding units received from locations outside of area:

Units received from outside the area should be entered by means of an "02" transaction (not to include units received back from repair and return). It should be confirmed that a matching Western bill, IO bill, or transfer was entered into the investment records by Accounting; the estimate ledger should be the basic source document for this continuation.

(b) Adding units received as surplus from the field:

Units received from area field locations are subject to "C" to "C" accounting; they should be entered as an "03" transaction which generates a mechanized SW-5015 and increases the stock investment.

(c) Sending units to area field locations:

The movement of units to area field

Locations from the stock should be initiated by "14" transactions which generate the mechanized SW-5015 and reduces the stock inventory.

- (d) Sending units to locations not in the area:

Units which are sent to locations outside the area require that the inventory and investment record, HN62 report, be reduced. The transaction procedure for this adjustment as outlined in the next section, "Adjusting." The Company books are not adjusted in this case by the CENSTKMTC procedures. Consequently, a manual transfer ("C" to "C") must be made for units sent to another area within the state; or, a retirement, salvage, and transfer (122-245 to "C") must be made for units sent out of state.

5.04 Adjusting

- (a) Units, Material Cost, and/or In-Place Cost:

The simplest method for making inventory and investment adjustments due to reconciliation corrections and the like is to use "02A" transaction (see Input Transactions). This adjusts only the records on the HN62 report. Investment adjustments of the Accounting records must be made by retirement or reverse retirements or transfers.

- (b) Account Code Definition for a PR Number:

To change the account code definition of a PR record requires a separate processing of programs HN051, HN050,

and HN052. "01" transactions for all years on file for the PR number should be submitted for processing in a single batch through program HN051. This processing should be followed immediately with the processing of programs HN050 and HN052. "02" transactions should then be submitted to restore the PR records with the new account. These transactions can be processed with the first batch of regular transactions which are submitted to the second, initial processing of program HN051 for the month.

The account can be changed without a special run by submitting the "01" transactions in one month and the "02" transactions in the following month so long as there are no "03" or "14" transactions for the PR number in the first month. However, this method will distort the investment record for a month.

- (c) Drawing Number for a PR Number:

A change in the drawing number definition requires the same procedure outlined for an account code change.

5.05 Deleting

- (a) A PR Number:

To delete a PR number, an "01" transaction should be submitted for that year.

- (b) A Year Within a PR Number:

To delete a year within a PR number, an "01" transaction should be submitted for that year.

Periodically, the HN55 report should be reduced by submitting deletes from the years reported. If there are no units on the HN62 report for a PR number, one year should be left on the HN55 report; this will leave the PR number on the valid list so that surplus units may be entered with "03" transactions.

5.06 Correcting Possible Errors

- (a) Each transaction type is subject to a variety of human errors. Some of the errors will be discovered by machine edits; others can go undetected unless careful analysis is utilized. The corrections that are made will vary with the type and extent of the error. Each case should be carefully analyzed, and the correction procedures should consider the impact on the Accounting investment records.
- (b) Some of the errors that can occur are noted below by transaction type:

"01" transaction:

- A. Delete fail due to "No Match."
- B. Delete wrong item due to wrong PR number being inputted with a match on year and account.

"02" transaction

- C. Wrong PR number inputted
 - 1. If the PR is on file, record will update wrong record.
 - 2. If the PR is not on file, record will create new PR type.
- D. Wrong year inputted.
- E. Wrong account inputted.
 - 1. Account inputted agrees with bill or transfer.
 - 2. Account inputted does not

agree with bill or transfer.

3. Transaction intended to define new PR type.

- F. Wrong units inputted.
- G. Wrong direct material cost inputted.
 - 1. IP cost was blank.
 - 2. IP cost was entered and correct.
- H. Wrong IP cost inputted.

NOTE: In the case of "01" and "02" transaction errors, the correction procedure is highly contingent; but, the primary consideration is: Was there average price distortion and transfer of units at the distorted price? If so, there are alternative solutions: (1) rerun the monthly run with corrections; (2) make manual transfers and correcting "02" adjustments next month; (3) reverse the distorted "14" transactions with "03" transactions, make "02" adjustments, and new "14" transactions in the next month. Under items 2 and 3, the HN56 should be noted at both the debit and credit entries regarding corrective action, so that a second correction is not undertaken at a later date. If no units were transferred at a distorted price, the corrections can be deferred until the following month; but, in this case, reporting procedures should take into consideration any distortion in the central stock investment.

"03" transaction:

- I. Wrong PR number inputted.
- J. Wrong mortality year inputted.
- K. Wrong "FROM" account inputted.
- L. Wrong units inputted.
- M. Wrong direct material cost inputted.
- N. Wrong in-place cost inputted.

If the average price is distorted by an "03" transaction, the contingencies

are the same as those brought out for "01" and "02" transactions. If items J and K are corrected by "02" adjustments and/or manual transfers, the HN56 should be noted.

"14" transactions

- O. Wrong PR number inputted.
- P. Wrong Area number inputted.
- Q. Wrong "TO" account inputted.

A "14" transaction submitted in error can normally be corrected by reversing the transaction with an "03" transaction and processing a correct "14" transaction in the next month. Item P should be carefully watched, especially in the case of toll repeater locations where the shipping location is different from the location code.

6. EXAMPLE SYSTEM

6.01 Introduction

The following section includes a group of exhibits which are the output of an example system for reference purposes.

An index precedes the exhibits which provide a simple cross referrence between weekly HN60 report and the monthly activity reports, HN51, HN54, HN56, and HN59. The table list the serial numbers of

the individual transactions in the HN60 report and marks the page number of the activity report(s) where transaction appears.

The first HN54 report is the output of an Option 2 run of program HN050, Central Stock create. The valid list of PR numbers have drawing numbers designated by "TEST RECORD##."

The HN60 report is the output of a single processing of program HN051. The transactions are grouped into two batches.

The drawing numbers represent the type of activity to be processed:

<u>Drawing Number</u>	<u>Explanation</u>
*TRNS to N-M YR-AC	Transfer to no match on year and account.
*TRNS to N-M PRNUM	Transfer to no match on PR number.
*ADD to BGIN FLE ETC.	Add to beginning file.

The remainder of the reports are the output of a normal maintenance processing of program HN050, an Option 1 processing.

REPORT INDEX

<u>REPORT</u>	<u>TITLE</u>	<u>EXHIBIT</u>	<u>PAGE</u>
HN54	Add-Delete Report from Option 2-Create	7	1
HN60	MTR Activity Card Edit and Batch Total Listing	8	1-5
HN51	Activity Error Report	9	1-2
HN54	Add-Delete Report	10	1-2
HN55	Zero/Credit Record Listing	11	1
HN56	SW-5015 Transfers of Plug-in Equipment - Detail	12	1-11
HN58	SW-5015 Transfers of Plug-in Equipment - Summary	13	1-8
HN59	Non-Processed Central Stock Transfer Activity Listing	14	1
HN62	Plug-In Equipment Listing	15	1-3
HN63	Summary of Plug-In Usage by Account	16	1
HN64	Total Investment for Account by Year	17	1
HN65	Summary of Plug-In Transfers	18	1-3

TRANSACTION INDEX

TRANSACTION TYPE	SERIAL NUMBER EXHIBIT 8 REPORT HN60	REPORT AND EXHIBIT PAGE				NOTE
		9 HN51	10 HN54	12 HN56 DB	12 14 HN56 HN59 CR	
01 02 02A 02N 03 14	10030001		2	9	3	
	10030002		2	9	3	
	10030003		2	9	3	
	10030004			9	3	
	10030005	1				No match on PR number.
	10030006		1			
	10030007	1				Can't start new PR and YR with zero units.
	10030008		1			
	10030009		1			
	10030010		1			
	10030011	1				Adjust transaction does not match on account.
	10030012		1	8	5	"03 ADD"
	10030013			8	3	
	10030014			9	4	
	10030015	1				Units should not be negative on '03'

TRANSACTION INDEX

TRANSACTION TYPE	SERIAL NUMBER	REPORT AND EXHIBIT PAGE						NOTE
		EXHIBIT 8						
		9	10	12	12	14	14	
01 02 02A 02N 03 14	REPORT HN60	HN61	HN54	HN56	HN56	HN59		
			DB	CR				
x	10030016	1					Delete transaction does not match on PR#.	
x	10030017	1					Delete transaction does not match on YR.	
x	10030018	2					Delete transaction does not match on Acct.	
	10030019			7	8	1	Partial transfer	
	10030020	2					No match on PR#.	
	10030021		1					
	10030022		2					
	10030023		2					
	10030024		1					
	10030025		1					
	10030026	1					Units and cost fields should be zeros.	
	10030027	1					Transaction should not match on PR#.	
x	10030028		2					
x	10030029		2					
x	10030030	1					Delete transaction does not match on Acct.	

TRANSACTION INDEX

TRANSACTION TYPE	SERIAL NUMBER EXHIBIT 8	REPORT AND EXHIBIT PAGE						NOTE
		REPORT HN60						
		9	10	12	12	14	14	
01 02 02A 02N 03 14	HN51	HN54	HN56	HN56	HN59	HN59		
			DB	CR				
X	10030031		1					Adjust transaction does not match on YR and Acct.
X	10030032		1					
X	10030033	1						
X	10030034		1					
	10030035	1						Adjust transaction does not match on PR#.
X	10030036		1					
	10030037			10	6			See Note 1 at end of index "03 ADD".
	10030038	1						
	10030039		1	9	2			
	10030040			1	8			
X	10030041		2					
X	10030042		2					
	10030043			8	1			
	10030044			1	8			

TRANSACTION INDEX

TRANSACTION TYPE	SERIAL NUMBER EXHIBIT 8	REPORT AND EXHIBIT PAGE						NOTE
		REPORT HN60						
		9 HN51	10 HN54	12 HN56	12 DB	12 HN56	14 HN59	
01 02 02A 02N 03 14								
x	10030045		2					See Note 2 at end of index.
x	10030046	2						Adjust transaction must match on PR#.
x	10030047	2						Adjust transaction can't leave file record negative.
x	10030048	1						Adjust transaction does not match on Acct.
x	10030049	1						Same as above.
x	10030050	2						Same as above.
x	10030051	2						
x	10030052		2					
x	10030053		1					
x	10030054		1					
x	10030055		2					Can't add zero units (minor items) to a "no match" on YR.
x	10030056	2						See Note 1 at end of index.
x	10030057	2						Adjust transaction does not match on YR and Acct.
x	10030058	1						

TRANSACTION INDEX

TRANSACTION TYPE	SERIAL NUMBER EXHIBIT 8	REPORT AND EXHIBIT PAGE						NOTE
		REPORT HN60						
		9	10	12	12	14	14	
01 02 02A 02N 03 14		HN51	HN54	HN56	HN56	HN59		
		DB	CR					
	10030059			10	6		See Note 1 at end of index.	
	10030060	1					"03 ADD".	
	10030061		1	8	11		"03 ADD".	
	10030062		1	8	11		Material Cost can't be zeros.	
	10030063	1					Note 1: This NO MATCH error should not occur at all but will occur infrequently. In this instance, the "03" transaction will appear to be correct, and it would be expected to process as an "03 ADD". The HN51 report will have at least one other error preceding this one with the same PR# but having a higher YR (and/or Acct.) than is shown for the last entry for the PR# group on the previous month's HN62 report. This preceding error (generally an "02A" transaction) will cause the problem. Reprocess the transaction next month.	
							Unprocessed 10030030 10030057 10030060	
							Causal Transaction 10030033 10030056 10030033	

Note 2: A program improvement has been made so that this error will not occur; an "02A" transaction will follow an "02" transaction with the same PR, YR, and ACCT.

EXHIBIT 7

SOUTHWESTERN BELL TELEPHONE COMPANY				EXHIBIT 7		PAGE 1				
CENTRAL STOCK AREA T0331				HNS4						
CENTRAL STOCK RECORD ADD DELETE REPORT				10-03-72						
PR	ACCT DRAWING NO.	YR	UNIT	M-COST	IP-COST	IN	OUT	M-ACTION	FLAG	SER-NBR
71010	57C TESTRECORD01	72	0	.00	.00	0	0	ADDED		00000001
71020	57C TESTRECORD02	72	0	.00	.00	0	0	ADDED		00000002
71030	57C TESTRECORD03	61	0	.00	.00	0	0	ADDED		00000003
71030	257TC TESTRECORD04	62	0	.00	.00	0	0	ADDED		00000004
71030	257TC TESTRECORD05	63	0	.00	.00	0	0	ADDED		00000005
71030	257TC TESTRECORD06	64	0	.00	.00	0	0	ADDED		00000006
71030	357TC TESTRECORD07	65	0	.00	.00	0	0	ADDED		00000007
71030	357TC TESTRECORD08	66	0	.00	.00	0	0	ADDED		00000008
71040	57C TESTRECORD09	67	0	.00	.00	0	0	ADDED		00000009
71040	57C TESTRECORD10	68	0	.00	.00	0	0	ADDED		00000010
71040	57C TESTRECORD11	69	0	.00	.00	0	0	ADDED		00000011
71040	57C TESTRECORD12	70	0	.00	.00	0	0	ADDED		00000012
71050	257TC TESTRECORD13	61	0	.00	.00	0	0	ADDED		00000013
71050	257TC TESTRECORD14	62	0	.00	.00	0	0	ADDED		00000014
71050	257TC TESTRECORD15	63	0	.00	.00	0	0	ADDED		00000015
71050	257TC TESTRECORD16	64	0	.00	.00	0	0	ADDED		00000016
71050	257TC TESTRECORD17	65	0	.00	.00	0	0	ADDED		00000017
71050	257TC TESTRECORD 1	67	0	.00	.00	0	0	ADDED		00000018
71060	57C TESTRECORD18	61	0	.00	.00	0	0	ADDED		00000019
71070	257TC TESTRECORD19	65	0	.00	.00	0	0	ADDED		00000020
71080	357TC TESTRECORD20	67	0	.00	.00	0	0	ADDED		00000021
71090	57C TESTRECORD21	69	0	.00	.00	0	0	ADDED		00000022
71100	257TC TESTRECORD22	71	0	.00	.00	0	0	ADDED		00000023
71110	257TC TESTRECORD23	70	0	.00	.00	0	0	ADDED		00000024

SOUTHWESTERN BELL TELEPHONE COMPANY										10-23-72		PAGE 001 EXHIBIT 8		
CENTRAL STOCK AREA 10331										RETAIN 30 DAYS				
MTR ACTIVITY CARD EDIT AND BATCH TOTAL LISTING														
CARD TYPE	FORM NUMBER	AREA CODE	P.R. NBR	ACCT CODE	NUMBR UNITS	DRAWING NUMBER	DIR MATL CJST	IN-PLACE COST	YEAR PLCD	BATCH NUMBER	SERIAL NUMBER			
1-2	3---	8--12	13-18	19-22	23-25	26-----	44-----	51-----	57	58-59	77-79			
03	98765	M5555	71110	2571	3	*TRNS TC N-M YR-AC	150.00	149.97	71	001	10030001			
03	98765	M5555	71110	2571	3	*TRNS TO N-M YR-AC	150.00	149.97	68	001	10030002			
03	98765	M5555	71110	2571	3	*TRNS TC N-M YR-AC	150.00	149.97	69	001	10030003			
03	98765	M5555	71110	2571	3	*TRNS TC N-M YR-AC	150.00	149.97	70	001	10030004			
03	98765	M5555	70222	571	3	*TRNS TO N-M PRNUM	150.00	149.97	68	001	10030005			
02	68765	T0331	71020	3571	3	*ADD TO EXIST PR	150.00		72	001	10030006			
02	68765	T0331	71021	572	0	*ADD ZERO UNITS	150.00	149.97	70	001	10030007			
02	68765	T0331	71021	572	0	*ADD ZERO UNITS	150.00		72	001	10030008			
02	68765	T0331	71021	572	3	*ADD TO N-M PR-NUM	150.00		72	001	10030009			
02	68765	T0331	71030	571	2	*ADD TO BGIN FILE	1.98	1.98	61	001	10030010			
02A	68765	T0331	71030	572	1CR	*ADD TO BGIN FILE	0.99CR	0.99CR	61	001	10030011			
03	98765	M5555	71030	3571	3	*TRNS TO N-M YR-AC	150.00	149.97	60	001	10030012			
03	98765	M5555	71040	2571	3	*TRNS TO N-M ACCT	150.00	149.97	67	001	10030013			
03	98765	M5555	71050	2572	6	*TRNS TO MATCH	150.00	149.97	61	001	10030014			
03	98765	M5555	71050	2572	3CR	*TRNS TO MATCH	150.00	149.97	61	001	10030015			
01		T0331	71055	571		*DEL N-M PR-NUM	0.00		65	001	10030016			
01		T0331	71060	571		*DEL N-M YR-PL	0.00		62	001	10030017			
01		T0331	71070	3571		*DEL N-M ACCT	0.00		65	001	10030018			
14	88765	M6666	71020	3572	10	*TRNS FR MATCH PR	0.00		72	001	10030019			
14	88765	M6666	71111	571	10	*TRNS FR N-M PRNUM	0.00		65	001	10030020			
02	98766	T0331	71032	2571	2	ADD TO NEW REC	125.00		72	001	10030021			
02N	01234		72010	571	0	NEW INV RECJRD	0.00	0.00	60	001	10030022			
02N	01234		71045	572	0	NEW INV RECJRD	0.00	0.00	65	001	10030023			
02N	01234		71005	571	0	NEW INV RECJRD	0.00	0.00	71	001	10030024			

EXHIBIT 8

(continued)

SOUTHWESTERN BELL TELEPHONE COMPANY		10-73-72		HN60		PAGE		002 EXHIBIT 8			
CENTRAL STOCK AREA T0331				RETAIN 30 DAYS							
MTR ACTIVITY CARD EDIT AND BATCH TOTAL LISTING											
CARD FORM	AREA	P.R. ACCT	NUMBER	DRAWING	DIR MATL	IN-PLACE	YEAR	BATCH	SERIAL		
TYPE NUMBER	CODE	NBR	CODE	NUMBER	COST	COST	PL CD	NUMBER	NUMBER		
1-2	3---7	8--12	13-18	19-22	23-25	26-----43	44-----50	51-----57	58-59	77-79	
02N	01234	71032	2571	0	NEW INV	RECJRD	0.00	65	001	10030025	
02N	01234	71034	571	1	NEW INV	RECJRD	50.00	72	001	10030026	
02N	01234	71040	571	0	NEW INV	RECJRD	0.00	65	001	10030027	
02	01234	71050	571	1	NC MATCH	ACCT	100.00	61	001	10030028	
02	01234	71050	3572	1	NC MATCH	ACCT	100.00	65	001	10030029	
01	01234	71050	3572	1	NC MATCH	ACCT	100.00	65	001	10030030	
02	8888	T0331	71040	571	1	*NEW INV	REC-YR	99.99	71	001	10030031
02	8888	T0331	71040	571	0	ADD NBR	TU NEW REC	0.01	71	001	10030032
*** BATCH IN BALANCE ***											

EXHIBIT 8

(continued)

SOUTHWESTERN BELL TELEPHONE COMPANY										PAGE 003 EXHIBIT 8	
CENTRAL STOCK AREA T0331										RETAIN 30 DAYS	
MTR ACTIVITY CARD EDIT AND BATCH TOTAL LISTING											
1-2	3	8	13-18	15-22	23-25	26	43	44	51	58-59	77-79
CARD FORM TYPE NUMBER	AREA CODE	P.R. NBR	ACCT NBR	UNITS	DRAWING NUMBER	DIR MATL CUST	IN-PLACE COST	YEAR PLCD	BATCH NUMBER	SERIAL NUMBER	
02A	68765	T0331	71030	571	1CR*ADJUST FLE	0.99CR	0.99CR	67	002	10030033	
02A	68766	T0331	71030	571	1CR*ADJUST FLE	0.99CR	0.99CR	61	002	10030034	
02A	68766	T0331	71031	571	1CR*ADJUST FLE	0.99CR	0.99CR	61	002	10030035	
02	68767	T0331	71030	571	1 *ADD TO FLE	1.98	1.98	61	002	10030036	
03	68768	M5555	71030	4571	3 *TRF TO FLE	5.94	5.94	66	002	10030037	
03	68769	M5555	71030	571	3 *TRF TO FLE	5.94	5.94	68	002	10030038	
03	68770	M5555	71030	572	1 *TRF TO FLE	1.98	1.98	61	002	10030039	
14	68771	M5555	71030	571	1 *TRF FR FLE	0.00	0.00		002	10030040	
02	68772	T0331	71090	571	3 *ADD TO FLE	226.50	226.50	69	002	10030041	
02A	68773	T0331	71090	571	2CR*ADJUST FLE	151.00CR	151.00CR	69	002	10030042	
03	68774	M5555	71090	571	1 *TRF TO FLE	75.50	75.50	69	002	10030043	
14	68775	M5555	71090	571	1 *TRF FR FLE	0.00	0.00		002	10030044	
02	68776	T0331	99999	2572	2 *ADD TO FLE	50.00	50.00	72	002	10030045	
02A	68777	T0331	99999	2572	2CR*ADD TO FLE	50.00CR	50.00CR	72	002	10030046	
02A	68778	T0331	71111	2572	1CR*ADJUST FLE	0.50CR	0.50CR	71	002	10030047	
02A	68779	T0331	71060	571	2CR*ADJUST FLE	5.50CR	5.50CR	61	002	10030048	
02A	68780	T0331	71060	2571	1CR*ADJUST FLE	10.00CR	10.00CR	61	002	10030049	
02A	68781	T0331	71110	3572	1CR*ADJUST FLE	5.00CR	5.00CR	68	002	10030050	
02A	68782	T0331	71110	4572	1CR*ADJUST FLE	10.00CR	10.00CR	68	002	10030051	
02A	68783	T0331	71110	2572	2 *ADJUST FLE	150.00CR	0.00	70	002	10030052	
02	68786	T0331	71010	571	2 *ADD TO FLE	230.00		72	002	10030053	
02A	68786	T0331	71010	571	1CR*ADJUST FLE	115.00CR		72	002	10030054	
02	68786	T0331	71080	4572	1 *TEST DUPE	100.00	100.00	67	002	10030055	
02	68786	T0331	71080	4572	0 *MNR NM YR	5.00	5.00	68	002	10030056	

EXHIBIT 8

(continued)

SOUTHWESTERN BELL TELEPHONE COMPANY													
CENTRAL STOCK AREA T0331					FN60 PAGE 004 EXHIBIT 8								
MTR ACTIVITY CARD EDIT AND BATCH TOTAL LISTING													
1-2	3	4	5	6	7	8	9	10	11				
TYPE NUMBER	AREA	P.R. NBR	ACCT NBR	DRAWING	DIR MATL	IN-PLACE	YEAR	BATCH	SERIAL				
1-2	3	4	5	6	7	8	9	10	11				
3	8	13	18	19	22	23	25	26	43				
7	8	12	13	18	19	22	23	25	26				
43	44	50	51	57	58	59	77	79					
03	68786	T0331	71030	4572	0	*MNR	NM	YR	5.00	65	002	10030057	
*** BATCH IN BALANCE ***													
SOUTHWESTERN BELL TELEPHONE COMPANY													
CENTRAL STOCK AREA T0331					FN60 PAGE 005 EXHIBIT 8								
MTR ACTIVITY CARD EDIT AND BATCH TOTAL LISTING													
1-2	3	4	5	6	7	8	9	10	11				
TYPE NUMBER	AREA	P.R. NBR	ACCT NBR	DRAWING	DIR MATL	IN-PLACE	YEAR	BATCH	SERIAL				
1-2	3	4	5	6	7	8	9	10	11				
3	8	13	18	19	22	23	25	26	43				
7	8	12	13	18	19	22	23	25	26				
43	44	50	51	57	58	59	77	79					
02A	68765	T0331	71030	571	1CR*ADJUST	FLE	0.99CR	67	003	10030058			
03	68768	M5555	71030	4571	3	*TRF	TO	FLE	5.94	66	003	10030059	
03	68769	M5555	71030	571	3	*TRF	TO	FLE	5.94	68	003	10030060	
03	66666	X2222	71040	371	1	L-ACCTPL	-YR	OF	R9	0.10	66	003	10030061
03	66666	X2222	71040	371	1	L-ACCTPL	-YR	OF	R12	0.10	71	002	10030062
03	68769	M5555	71030	571	0	*TRF	TO	FLE	0.00	68	003	10030063	
*** BATCH IN BALANCE ***													

EXHIBIT 9

EXHIBIT 9

PAGE 1

H451

10-03-72

SOUTHWESTERN BELL TELEPHONE COMPANY
CENTRAL STOCK AREA IC331
ACTIVITY ERROR REPORT

T MTR	AREA PR	ACC UN DRAWING	M-COST I-COST YR	SER-NBR
0398765	M55570222	571003*TRNS TC N-M PRNLM0015000J1149708	001	10030005

		**		
0268765	T033171021	572000*ADD ZERC UNITS 0015000J1149770	001	10030007

0268765	T033171030	57200J*ADD TO BGIN FILE 00009RJJ00J9R61	001A	10030011

0268765	T033171030	57100J*ADJUST FLE 00009RJJ00J9R67	003A	10030058

		**		
0268765	T033171030	57100J*ADJUST FLE 00009RJJ00J9R67	002A	10030033

		**		
0368769	M55571030	571003*TRF TO FLE 0000594JJ0059468	003	10030060

		**		
0368769	M55571030	571003*TRF TO FLE 0000594JJ0059468	002	10030038

		**		
0368769	M55571030	571000*TRF TO FLE 000000JJ0000008	003	10030063

		**		
0268766	T033171031	57100J*ADJUST FLE 00009RJJ00J9R61	002A	10030035

		**		
0201234	71034	57100C*NEW INV RECORD 000500JJ0497672	001N	10030026

		**		
0201234	71040	57100C*NEW INV RECORD 000000JJ0000009	001N	10030027

		**		
0398765	M55571050	257200CL*TRNS TC MATCH 0015000J11499761	001	10030015

		**		
0101234	71050	357200INO MATCH ACCT 0010000JJ1000065	001	10030030

		**		
0100000	T033171055	571 *DEL N-M PR-NUM 000000J 05	001	10030016

		**		
0268797	T033171060	57100K*ADJUST FLE 000055JJ0055J1	002A	10030048

		**		

EXHIBIT 9

(continued)

0268780T033171060	257100J*ADJUST FLE	000100 JJ0100 J1	002A	*ERROR* NO-MATCH	10030049

0100000T033171060	571 *DEL N-M YR-PL	0000000	62	*ERROR* NO-MATCH	10030017
**					
SOUTHWESTERN BELL TELEPHONE COMPANY					
CENTRAL STOCK AREA T0331					
10-03-72					
ACTIVITY ERROR REPORT					
T MTR AREA PR	ACC UN DRAWING	M-COST I-COST YR			SER-NBR
.....1.....2.....3.....4.....5.....6.....
.....7.....8.....9.....0.....1.....2.....
.....3.....4.....5.....6.....7.....8.....
.....9.....0.....1.....2.....3.....4.....
0100000T033171070	3571 *DEL N-M ACCT	0000000	65	*ERROR* NO-MATCH	10030018

0268786T033171080	4572000*MNR NM YR	0005000JJ50068	002	*ERROR* UNITS	10030056

0368786T033171080	4572000*MNR NM YR	0005000JJ50069	002	*ERROR* NO-MATCH	10030057

0268781T033171110	357200J*ADJUST FLE	000050 JJ0050 J8	002A	*ERROR* NO-MATCH	10030050

0268782T033171110	457200J*ADJUST FLE	000100 JJ0100 68	002A	*ERROR* NO-MATCH	10030051

026878T033171111	257200J*ADJUST FLE	000005 JJ0005 71	002A	*ERROR* NO-MATCH	10030047

0268777T03315999	257280K*ADD TC FLE	000500 JJ500 72	002A	*ERROR* NO-MATCH	10030046
1488785M66671111					
S71010*TRNS FR N-M PRNUMC00000					
65					
001 *ERROR* NO-MATCH					
10030020					

EXHIBIT 10

PR	ACCT DRAWING NO.	YR	UNIT	M-COST	IP-COST	IN	OUT	M-ACTION	FLAG	SER-NBR
71005	57C NEW INV RECO	71	0	.00	.00	0	0	ZERO ADD		10030024
71010	57C TESTRECORD01	72	0	.00	.00	0	0	OLD		
71010	57C TESTRECORD01	72	2	230.00	228.94	2	0	UPDATED		10030053
71010	57C TESTRECORD01	72	2	230.00	228.94	2	0	OLD		
71010	57C TESTRECORD01	72	1	115.00	114.47	1	0	ADJUSTED		10030054
71020	57C TESTRECORD02	72	0	.00	.00	0	0	OLD		
71020	57C TESTRECORD02	72	3	150.00	149.31	3	0	UPDATED	ACCT	10030006
71021	57TC *ADD TO N-M	72	3	150.00	149.31	3	0	ADDED		10030009
71021	57TC *ADD TO N-M	72	3	150.00	149.31	3	0	OLD		
71021	57TC *ADD TO N-M	72	3	300.00	298.62	3	0	UPDATED		10030008
71030	57C TESTRECORD03	60	3	150.00	149.97	3	0	03 ADD	ACCT	10030012
71030	57C TESTRECORD03	61	0	.00	.00	0	0	OLD		
71030	57C TESTRECORD03	61	2	1.98	1.98	2	0	UPDATED		10030010
71030	57C TESTRECORD03	61	2	1.93	1.98	2	0	OLD		
71030	57C TESTRECORD03	61	3	3.95	3.96	3	0	UPDATED		10030036
71030	57C TESTRECORD03	61	3	3.95	3.96	3	0	OLD		
71030	57C TESTRECORD03	61	2	2.97	2.97	2	0	ADJUSTED		10030034
71030	257TC TESTRECORD04	61	1	1.98	1.98	1	0	03 ADD	ACCT	10030039
71032	257C NEW INV RECO	65	0	.00	.00	0	0	ZERO ADD		10030025
71032	257C NEW INV RECO	72	2	125.00	124.42	2	0	ADDED		10030021
71040	57C TESTRECORD09	66	1	.11	.10	1	0	03 ADD	ACCT	10030061
71040	57C TESTRECORD12	71	1	.11	.10	1	0	03 ADD	ACCT	10030062
71040	57C TESTRECORD12	71	1	.11	.10	1	0	OLD		

EXHIBIT 10
(continued)

PR	ACCT DRAWING NO.	YR	UNIT	M-COST	IP-COST	IN	OUT	M-ACTION	FLAG	SER-NBR	
71040	57C TESTRECORD12	71	2	100.10	100.09	2	0	0	UPDATED	10030031	
71040	57C TESTRECORD12	71	2	100.10	100.09	2	0	0	OLD		
71040	57C TESTRECORD12	71	2	100.11	100.10	2	0	0	UPDATED	10030032	
SOUTHWESTERN BELL TELEPHONE COMPANY CENTRAL STOCK AREA 10231 CENTRAL STOCK RECORD ADD DELETE REPORT											
				HN54				EXHIBIT 10		PAGE 2	
71045	57TC NEW INV RECO	65	0	.00	.00	0	0	0	ZERO ADD	10030023	
71050	257TC TESTRECORD13	61	0	.00	.00	0	0	0	OLD		
71050	257TC TESTRECORD13	61	1	100.00	100.00	1	0	0	UPDATED	10030028	
71050	257TC TESTRECORD 1	65	1	100.00	100.00	1	0	0	ADDED	10030029	
71080	357TC TESTRECORD20	67	0	.00	.00	0	0	0	OLD		
71080	357TC TESTRECORD20	67	1	100.00	100.00	1	0	0	UPDATED	10030055	
71090	57C TESTRECORD21	65	0	.00	.00	0	0	0	OLD		
71090	57C TESTRECORD21	65	3	226.50	226.50	3	0	0	UPDATED	10030041	
71090	57C TESTRECORD21	65	3	226.50	226.50	3	0	0	OLD		
71090	57C TESTRECORD21	65	1	75.50	75.50	1	0	0	ADJUSTED	10030042	
71110	257TC TESTRECORD23	68	3	149.97	149.97	3	0	0	03 ADD	10030002	
71110	257TC TESTRECORD23	69	3	149.97	149.97	3	0	0	03 ADD	10030003	
71110	257TC TESTRECORD23	70	3	149.97	149.97	3	0	0	OLD		
71110	257TC TESTRECORD23	70	5	.00	149.97	5	0	0	ADJUSTED	10030052	
71110	257TC TESTRECORD23	71	3	149.97	149.97	3	0	0	03 ADD	10030001	
72010	57C NEW INV RECO	60	0	.00	.00	0	0	0	ZERO ADD	10030022	
99999	257TC *ADD TO FLE	72	2	50.00	50.00	2	0	0	ADDED	10030045	

EXHIBIT 11

PR	ACCT DRAWING NO.	YR	UNIT	M-COST	IP-COST	IN	OUT
71005	57C NEW INV RECO	71	0	.00	.00	0	0
71020	57C TESTRECORD02	72	0	.00	.00	3	3
71030	257TC TESTRECORD04	62	0	.00	.00	0	0
71030	257TC TESTRECORD05	63	0	.00	.00	0	0
71030	257TC TESTRECORD06	64	0	.00	.00	0	0
71030	257TC TESTRECORD07	65	0	.00	.00	0	0
71032	257C NEW INV RECO	69	0	.00	.00	0	0
71040	57C TESTRECORD10	68	0	.00	.00	0	0
71040	57C TESTRECORD11	69	0	.00	.00	0	0
71040	57C TESTRECORD12	70	0	.00	.00	0	0
71045	57TC NEW INV RECO	65	0	.00	.00	0	0
71050	257TC TESTRECORD14	62	0	.00	.00	0	0
71050	257TC TESTRECORD15	63	0	.00	.00	0	0
71050	257TC TESTRECORD16	64	0	.00	.00	0	0
71050	257TC TESTRECORD17	65	0	.00	.00	0	0
71050	257TC TESTRECORD1	67	0	.00	.00	0	0
71060	57C TESTRECORD18	61	0	.00	.00	0	0
71070	257TC TESTRECORD19	65	0	.00	.00	0	0
71100	257TC TESTRECORD22	71	0	.00	.00	0	0
72010	57C NEW INV RECO	60	0	.00	.00	0	0

SOUTHWESTERN BELL TELEPHONE COMPANY
 CENTRAL STOCK AREA TG331
 CENTRAL STOCK ZERO/CREDIT RECCRD LISTING ***

10-03-72
 EXHIBIT 11

HN55
 PAGE 1

EXHIBIT 12

SOUTHWESTERN BELL TELEPHONE COMPANY										
CENTRAL STOCK AREA T0331										
10-03-72										
TRANSFERS OF PLUG-IN EQUIPMENT DATED 1J-72										
SW-5015										
AREA	ACCT	MTR	AUTH	PR#	EGCT YR	DRAWING NO.	M-CJST	UNIT	IP-COST	SER-NBR
M5555	57C	68771	01234	71030	60	*TRF FR FLE	50.00	1	49.99	10030040
M5555	57C	68775	01234	71090	69	*TRF FR FLE	75.50	1	75.50	10030044
M5555	57C	68774	09999	71090	69	*TRF TO FLE	75.50-	1-	75.50-	10030043
M5555	57C						50.00		49.99	
SOUTHWESTERN BELL TELEPHONE COMPANY										
CENTRAL STOCK AREA T0331										
10-03-72										
TRANSFERS OF PLUG-IN EQUIPMENT DATED 1J-72										
SW-5015										
AREA	ACCT	MTR	AUTH	PR#	EGCT YR	DRAWING NO.	M-CJST	UNIT	IP-COST	SER-NBR
M5555	57TC	68770	09999	71030	61	*TRF TO FLE	1.98-	1-	1.98-	10030039
M5555	57TC						1.98-		1.98-	
SOUTHWESTERN BELL TELEPHONE COMPANY										
CENTRAL STOCK AREA T0331										
10-03-72										
TRANSFERS OF PLUG-IN EQUIPMENT DATED 1J-72										
SW-5015										
AREA	ACCT	MTR	AUTH	PR#	EGCT YR	DRAWING NO.	M-CJST	UNIT	IP-COST	SER-NBR
M5555	257C	58765	05599	71040	67	*TRNS TC N-M ACCT	150.00-	3-	149.97-	10030013
M5555	257C	58765	05599	71110	68	*TRNS TC N-M YR-AC	150.00-	3-	149.97-	10030002
M5555	257C	58765	05999	71110	69	*TRNS TO N-M YR-AC	150.00-	3-	149.97-	10030003
M5555	257C	58765	05999	71110	70	*TRNS TO N-M YR-AC	150.00-	3-	149.97-	10030004
M5555	257C	58765	05999	71110	71	*TRNS TO N-M YR-AC	150.00-	3-	149.97-	10030001
M5555	257C						750.00-		749.85-	

EXHIBIT 12

(continued)

SOUTHWESTERN BELL TELEPHONE COMPANY		HN56	PAGE	4	EXHIBIT 12
CENTRAL STOCK AREA 10331		10-03-72			
SW-5015		TRANSFERS OF PLUG-IN EQUIPMENT DATED 10-72 **DETAIL**			
AREA ACCT	MTR AUTH PR#	EQCT YR DRAWING NO.	M-CJST UNIT	IP-COST	SER-NBR
M5555	257TC 98765 05999 71050	61 *TRNS TC MATCH	150.00- 6-	149.97-	10030014
M5555	257TC		150.00-	149.97-	
SOUTHWESTERN BELL TELEPHONE COMPANY		HN56	PAGE	5	EXHIBIT 12
CENTRAL STOCK AREA 10331		10-03-72			
SW-5015		TRANSFERS OF PLUG-IN EQUIPMENT DATED 10-72 **DETAIL**			
AREA ACCT	MTR AUTH PR#	EQCT YR DRAWING NO.	M-CJST UNIT	IP-COST	SER-NBR
M5555	357C 98765 05999 71030	60 *TRNS TC N-M YR-AC	150.00- 3-	149.97-	10030012
M5555	357C		150.00-	149.97-	
SOUTHWESTERN BELL TELEPHONE COMPANY		HN56	PAGE	6	EXHIBIT 12
CENTRAL STOCK AREA 10331		10-03-72			
SW-5015		TRANSFERS OF PLUG-IN EQUIPMENT DATED 10-72 **DETAIL**			
AREA ACCT	MTR AUTH PR#	EQCT YR DRAWING NO.	M-CJST UNIT	IP-COST	SER-NBR
M5555	457C 68768 05999 71030	66 *TRF TC FLE	5.94- 3-	5.94-	10030059
M5555	457C		5.94- 3-	5.94-	10030037
M5555	457C		11.98-	11.88-	
SOUTHWESTERN BELL TELEPHONE COMPANY		HN56	PAGE	7	EXHIBIT 12
CENTRAL STOCK AREA 10331		10-03-72			
SW-5015		TRANSFERS OF PLUG-IN EQUIPMENT DATED 10-72 **DETAIL**			
AREA ACCT	MTR AUTH PR#	EQCT YR DRAWING NO.	M-CJST UNIT	IP-COST	SER-NBR
M6666	357TC 98765 01234 71020	72 *TRNS FR MATCH PR	150.00 3	149.31	10030019
M6666	357TC		150.00	149.31	

EXHIBIT 12

(continued)

SOUTHWESTERN BELL TELEPHONE COMPANY										HN50	PAGE	8	EXHIBIT 12
CENTRAL STOCK AREA T0331										10-03-72			
SW-5015 TRANSFERS OF PLUG-IN EQUIPMENT DATED 10-72										**DETAIL**			
AREA	ACCT	MTR	AUTH	PR#	EQCT	YR	DRAWING NO.	M-COST	UNIT	IP-COST	SER-NBR		
T0331	57C	6E765	01234	71020	72	*TRNS	FR MATCH PR	150.00-	3-	149.31-	10030019		
T0331	57C	6E771	01234	71030	60	*TRF	FR FLE	50.00-	1-	49.99-	10030040		
T0331	57C	5E765	05999	71030	60	*TRNS	TC N-M YR-AC	150.00	3	149.97	10030012		
T0331	57C	6E666	05999	71040	66	L-ACCTPL	-YR JF R9	.11	1	.10	10030061		
T0331	57C	5E765	09999	71040	67	*TRNS	TC N-M ACCT	150.00	3	149.97	10030013		
T0331	57C	6E666	05999	71040	71	L-ACCT&H	-YR OF R12	.11	1	.10	10030062		
T0331	57C	6E774	09999	71050	69	*TRF	TC FLE	75.50	1	75.50	10030043		
T0331	57C	6E775	01234	71090	69	*TRF	FR FLE	75.50-	1-	75.50-	10030044		
T0331	57C							100.22		100.84			
SOUTHWESTERN BELL TELEPHONE COMPANY										HN50	PAGE	9	EXHIBIT 12
CENTRAL STOCK AREA T0331										10-03-72			
SW-5015 TRANSFERS OF PLUG-IN EQUIPMENT DATED 10-72										**DETAIL**			
AREA	ACCT	MTR	AUTH	PR#	EQCT	YR	DRAWING NO.	M-COST	UNIT	IP-COST	SER-NBR		
T0331	257TC	6E770	05999	71030	61	*TRF	TC FLE	1.98	1	1.98	10030039		
T0331	257TC	5E765	05999	71050	61	*TRNS	TC MATCH	150.00	6	149.97	10030014		
T0331	257TC	5E765	05999	71110	68	*TRNS	TC N-M YR-AC	150.00	3	149.97	10030002		
T0331	257TC	5E765	05999	71110	69	*TRNS	TC N-M YR-AC	150.00	3	149.97	10030003		
T0331	257TC	5E765	05999	71110	70	*TRNS	TC N-M YR-AC	150.00	3	149.97	10030004		
T0331	257TC	5E765	05999	71110	71	*TRNS	TC N-M YR-AC	150.00	3	149.97	10030001		
T0331	257TC							751.98		751.83			

EXHIBIT 12

(continued)

SOUTHWESTERN BELL TELEPHONE COMPANY 10-03-72 HNSO PAGE 10 EXHIBIT 12
 CENTRAL STOCK AREA T0331
 SW-5015 TRANSFERS OF PLUG-IN EQUIPMENT DATED 10-72 **DETAIL**

AREA	ACCT	MTR	ALTH	PR#	EQCT YR	DRAWING NO.	M-CJST	UNIT	IP-COST	SER-NBR
T0331	357TC	68768	05559	71030	66	*TRF TO FLE	5.94	3	5.94	10030037
T0331	357TC	68768	05999	71030	66	*TRF TO FLE	5.94	3	5.94	10030059
T0331	357TC						11.38		11.88	

SOUTHWESTERN BELL TELEPHONE COMPANY 10-03-72 HNSO PAGE 11 EXHIBIT 12
 CENTRAL STOCK AREA T0331
 SW-5015 TRANSFERS OF PLUG-IN EQUIPMENT DATED 10-72 **DETAIL**

AREA	ACCT	MTR	ALTH	PR#	EQCT YR	DRAWING NO.	M-CJST	UNIT	IP-COST	SER-NBR
X2222	37C	66666	05559	71040	66	L-ACCTPL-YR JF R9	.11-	1-	.10-	10030061
X2222	37C	66666	05559	71040	71	L-ACCTPL-YR JF R12	.11-	1-	.10-	10030062
X2222	37C						.22-		.20-	

 *APPROVED *
 *TITLE *

EXHIBIT 13

SOUTHWESTERN BELL TELEPHONE COMPANY		10-03-72		HN58		PAGE 1		EXHIBIT 13	
CENTRAL STOCK AREA T0331		TRANSFERS OF PLUG-IN EQUIPMENT DATED 10-72		HN58		PAGE 2		EXHIBIT 13	
SW-5015		**SUMMARY**		HN58		PAGE 3		EXHIBIT 13	
FROM AREA	TO AREA	ACCT	ACCT	YR	M-CJST	IP-COST	IP-COST	IP-COST	IP-COST
M555	57C	T0331	57C	69	75,50-	75,50-	75,50-	75,50-	75,50-
M555	57C	T0331	57C	69	75,50	75,50	75,50	75,50	75,50
EXHIBIT 13									
SOUTHWESTERN BELL TELEPHONE COMPANY		10-03-72		HN58		PAGE 2		EXHIBIT 13	
CENTRAL STOCK AREA T0331		TRANSFERS OF PLUG-IN EQUIPMENT DATED 10-72		HN58		PAGE 3		EXHIBIT 13	
SW-5015		**SUMMARY**		HN58		PAGE 3		EXHIBIT 13	
FROM AREA	TO AREA	ACCT	ACCT	YR	M-CJST	IP-COST	IP-COST	IP-COST	IP-COST
M555	57TC	T0331	257TC	61	1,98-	1,98-	1,98-	1,98-	1,98-
M555	57TC	T0331	257TC	61	1,98	1,98	1,98	1,98	1,98
EXHIBIT 13									
SOUTHWESTERN BELL TELEPHONE COMPANY		10-03-72		HN58		PAGE 3		EXHIBIT 13	
CENTRAL STOCK AREA T0331		TRANSFERS OF PLUG-IN EQUIPMENT DATED 10-72		HN58		PAGE 3		EXHIBIT 13	
SW-5015		**SUMMARY**		HN58		PAGE 3		EXHIBIT 13	
FROM AREA	TO AREA	ACCT	ACCT	YR	M-CJST	IP-COST	IP-COST	IP-COST	IP-COST
M555	257C	T0331	257C	67	150,00-	149,97-	149,97-	149,97-	149,97-
M555	257C	T0331	257C	68	150,00-	149,97-	149,97-	149,97-	149,97-
M555	257C	T0331	257C	69	150,00-	149,97-	149,97-	149,97-	149,97-
M555	257C	T0331	257C	70	150,00-	149,97-	149,97-	149,97-	149,97-
M555	257C	T0331	257C	71	150,00-	149,97-	149,97-	149,97-	149,97-
M555	257C	T0331	257C	67	150,00	149,97	149,97	149,97	149,97
M555	257C	T0331	257C	68	150,00	149,97	149,97	149,97	149,97
M555	257C	T0331	257C	69	150,00	149,97	149,97	149,97	149,97
M555	257C	T0331	257C	70	150,00	149,97	149,97	149,97	149,97
M555	257C	T0331	257C	71	150,00	149,97	149,97	149,97	149,97

EXHIBIT 13

(continued)

SOUTHWESTERN BELL TELEPHONE COMPANY 10-03-72 HN58 PAGE 4 EXHIBIT 13
 CENTRAL STOCK AREA 10331
 SW-5015 TRANSFERS OF PLUG-IN EQUIPMENT DATED 10-72 **SUMMARY**
 FROM***** TO*****
 AREA ACCT AREA ACCT YR M-CJST IP-COST
 M5555 257TC 61 150,00- 149,97-
 M5555 257TC 10331 257TC 61 150,00 149,97

SOUTHWESTERN BELL TELEPHONE COMPANY 10-03-72 HN58 PAGE 5 EXHIBIT 13
 CENTRAL STOCK AREA 10331
 SW-5015 TRANSFERS OF PLUG-IN EQUIPMENT DATED 10-72 **SUMMARY**
 FROM***** TO*****
 AREA ACCT AREA ACCT YR M-CJST IP-COST
 M5555 357C 60 150,00- 149,97-
 M5555 357C 10331 57C 60 150,00 149,97

SOUTHWESTERN BELL TELEPHONE COMPANY 10-03-72 HN58 PAGE 6 EXHIBIT 13
 CENTRAL STOCK AREA 10331
 SW-5015 TRANSFERS OF PLUG-IN EQUIPMENT DATED 10-72 **SUMMARY**
 FROM***** TO*****
 AREA ACCT AREA ACCT YR M-CJST IP-COST
 M5555 457C 66 11,88- 11,88-
 M5555 457C 10331 357TC 66 11,88 11,88

EXHIBIT 13

(continued)

SOUTHWESTERN BELL TELEPHONE COMPANY		10-03-72	HN58	PAGE 7	EXHIBIT 13
CENTRAL STOCK AREA T0331		10-03-72	HN58	PAGE 8	EXHIBIT 13
SN-5015		TRANSFERS CF PLUG-IN EQUIPMENT DATED 10-72	HN58	PAGE 7	EXHIBIT 13
SUMMARY		TRANSFERS CF PLUG-IN EQUIPMENT DATED 10-72	HN58	PAGE 8	EXHIBIT 13
FRM*****	TO*****	YR	M-CJST	IP-COST	
AREA ACCT	AREA ACCT				
T0331	57C	60	50.00-	49.99-	
T0331	57C	69	75.50-	75.50-	
T0331	57C	72	150.00-	149.31-	
T0331	57C M5555	60	50.00	49.99	
T0331	57C M5555	69	75.50	75.50	
T0331	57C M6666	72	150.00	149.31	
SOUTHWESTERN BELL TELEPHONE COMPANY		10-03-72	HN58	PAGE 8	EXHIBIT 13
CENTRAL STOCK AREA T0331		10-03-72	HN58	PAGE 8	EXHIBIT 13
SN-5015		TRANSFERS CF PLUG-IN EQUIPMENT DATED 10-72	HN58	PAGE 7	EXHIBIT 13
SUMMARY		TRANSFERS CF PLUG-IN EQUIPMENT DATED 10-72	HN58	PAGE 8	EXHIBIT 13
FRM*****	TO*****	YR	M-CJST	IP-COST	
AREA ACCT	AREA ACCT				
X2222	37C	66	.11-	.10-	
X2222	37C	71	.11-	.10-	
X2222	37C T0331	66	.11	.10	
X2222	37C T0331	71	.11	.10	

*APPROVED					
*TITLE					

EXHIBIT 14

SOUTHWESTERN BELL TELEPHONE COMPANY

HN59

PAGE 1 EXHIBIT 14

10-03-72

CENTRAL STOCK AREA TC331

NON-PROCESSED CENTRAL STOCK TRANSFER ACTIVITY LISTING ***

T MTR AREA PR ACC UN DRAWING M-COST I-COST YR SER-NBR

.....1.....2.....3.....4.....5.....6.....7.....8 TR-UNITS NON-PROC

1488765M666671020 3572010*TRNS FR MATCH PR 72 001 3 7 10030019

EXHIBIT 15

SOUTHWESTERN BELL TELEPHONE COMPANY													EXHIBIT 15		PAGE 1	
CENTRAL STOCK AREA 10331													HN62			
10-03-72																
PLUG-IN EQUIPMENT LISTING																
DRAWING NO.	NAME OF UNIT	EQUIP CATGY	PR. NO.	ACCT	NUMBR UNITS	MATERIAL COST	INPLACE COST	AVG IN-PLACE COST	YR	PL	ACTIVITY IN	ACTIVITY OUT				
NEW INV RECO			71035	57C	0	.00	.00	.00	71	0	0	0				
PR ITEMS TOTALS 71005													0.00			
TESTRECORD01			71010	57C	1	115.00	114.47	114.47	72	1	0	0				
PR ITEMS TOTALS 71010													114.47			
TESTRECORD02			71020	57C	0	.00	.00	.00	72	3	3	3				
PR ITEMS TOTALS 71020													0.00			
*ADD TO N-M			71021	57TC	3	300.00	258.62	95.54	72	3	0	0				
PR ITEMS TOTALS 71021													298.62			
TESTRECORD03			71030	57C	2	100.00	95.98	49.99	60	3	1	1				
TESTRECORD03			71030	57C	2	2.97	2.57	1.48	61	2	0	0				
TESTRECORD04			71030	257TC	1	1.98	1.58	1.98	61	1	0	0				
TESTRECORD04			71030	257TC	0	.00	.00	.00	62	0	0	0				
TESTRECORD05			71030	257TC	0	.00	.00	.00	63	0	0	0				
TESTRECORD06			71030	257TC	0	.00	.00	.00	64	0	0	0				
TESTRECORD07			71030	357TC	0	.00	.00	.00	65	0	0	0				
TESTRECORD08			71030	357TC	6	11.88	11.88	1.98	66	6	0	0				
PR ITEMS TOTALS 71030													116.81			
NEW INV RECO			71032	257C	0	.00	.00	.00	69	0	0	0				
NEW INV RECO			71032	257C	2	125.00	124.42	62.21	72	2	0	0				
PR ITEMS TOTALS 71032													124.42			
TESTRECORD09			71040	57C	1	.11	.10	.10	66	1	0	0				
TESTRECORD09			71040	57C	3	150.00	145.57	45.99	67	3	0	0				
TESTRECORD10			71040	57C	0	.00	.00	.00	68	0	0	0				
TESTRECORD11			71040	57C	0	.00	.00	.00	69	0	0	0				
TESTRECORD12			71040	57C	0	.00	.00	.00	70	0	0	0				
TESTRECORD12			71040	57C	2	100.11	100.10	50.05	71	2	0	0				
PR ITEMS TOTALS 71040													250.17			

EXHIBIT 15

(continued)

SOUTHWESTERN BELL TELEPHONE COMPANY										EXHIBIT 15		PAGE 2	
CENTRAL STOCK AREA TG331										H452			
10-C3-72													
PLUG-IN EQUIPMENT LISTING													
DRAWING NO.	NAME OF UNIT	EQUIP CATGY	PR. NO.	ACCT	UNITS	NUMBER	MATERIAL COST	INPLACE COST	AVG IN-PLACE COST	YR PL	ACTIVITY IN	ACTIVITY OUT	
NEW INV RECO			71045	57TC	0	0	.00	.00	.00	65	0	0	
PR ITEMS TOTALS 71045										0.00			
TESTRECORD13			71050	257TC	7	7	250.00	249.97	35.71	61	7	0	
TESTRECORD14			71050	257TC	0	0	.00	.00	.00	62	0	0	
TESTRECORD15			71050	257TC	0	0	.00	.00	.00	63	0	0	
TESTRECORD16			71050	257TC	0	0	.00	.00	.00	64	0	0	
TESTRECORD17			71050	257TC	0	0	.00	.00	.00	65	0	0	
TESTRECORD 1			71050	257TC	1	1	100.00	100.00	100.00	65	1	0	
TESTRECORD 1			71050	257TC	0	0	.00	.00	.00	67	0	0	
PR ITEMS TOTALS 71050										349.97			
TESTRECORD18			71050	57C	0	0	.00	.00	.00	61	0	0	
PR ITEMS TOTALS 71050										0.00			
TESTRECORD19			71070	257TC	0	0	.00	.00	.00	65	0	0	
PR ITEMS TOTALS 71070										0.00			
TESTRECORD20			71030	357TC	1	1	100.00	100.00	100.00	67	1	0	
PR ITEMS TOTALS 71030										100.00			
TESTRECORD21			71090	57C	1	1	75.50	75.50	75.50	69	2	1	
PR ITEMS TOTALS 71090										75.50			
TESTRECORD22			71100	257TC	0	0	.00	.00	.00	71	0	0	
PR ITEMS TOTALS 71100										0.00			
TESTRECORD23			71110	257TC	3	3	150.00	149.97	49.99	68	3	0	
TESTRECORD23			71110	257TC	3	3	150.00	149.97	49.99	69	3	0	
TESTRECORD23			71110	257TC	3	3	150.00	149.97	49.99	71	3	0	
PR ITEMS TOTALS 71110										449.91			
NEW INV RECO			72010	57C	0	0	.00	.00	.00	60	0	0	
PR ITEMS TOTALS 72010										0.00			

EXHIBIT 16

SOUTHWESTERN BELL TELEPHONE COMPANY
AREA-DALLAS
SUMMARY OF PLUG-IN USAGE BY ACCOUNT FROM CENTRAL STOCK LOCATION T0331
FORWARD TO D/R ENGINEERS

H063

PAGE 001

EXHIBIT 16

RUN DATE 10-03-72

RETAIN 1 YR

***** REMARKS *****

ACCOUNT TOTAL
CODE USAGE

57C 125.49

357TC 149.31

EXHIBIT 17

SOUTHWESTERN BELL TELEPHONE COMPANY		HMO4		PAGE 001 EXHIBIT 17	
AREA-DALLAS		RUN DATE 10-03-72		RETAIN N YRS	
TOTAL INVESTMENT FOR ACCOUNT BY YEAR FOR CENTRAL STOCK LOCATION T0331					
USE FOR RECONCILIATION WITH 6820 OR FV71 REPORT					
ACCOUNT CODE	YEAR	YR-PL TOTAL	ACCOUNT TOTAL	TOTAL C/S RECORDS	TOTAL C/S INVESTMENT
571	60	59.58			
571	61	2.57			
571	66	0.10			
571	67	149.57			
571	68	0.00			
571	69	75.50			
571	70	0.00			
571	71	100.10			
571	72	114.47	543.09		
572	65	0.00			
572	72	298.62	298.62		
2571	69	0.00			
2571	72	124.42	124.42		
2572	61	251.55			
2572	62	0.00			
2572	63	0.00			
2572	64	0.00			
2572	65	100.00			
2572	67	0.00			
2572	68	149.57			
2572	69	149.57			
2572	71	149.57			
2572	72	50.00	851.89		
3572	65	0.00			
3572	66	11.88			
3572	67	100.00			
TOTAL LINE			111.89	39	1,929.67

SOUTHWESTERN BELL TELEPHONE COMPANY		HNOs		PAGE 001		EXHIBIT 18	
AREA-CALLAS	RUN DATE 10-03-72	RETAIN	RETIN PER				
SUMMARY OF PLUG-IN TRANSFERS TO AND FROM CENTRAL STOCK LOCATION T0331							
USE TO PREPOST SN-722 FORMS AFTER AUTHORIZATION							
LOCATION	ACCOUNT	YEAR	PLCD	SUMMARIZED	ESTIMATE	ROUTINE	
CODE	CODE			AMOUNT	AMOUNT	AMOUNT	
M5555	57C	60		49.99	49.99	0.00	
M5555	57C	69		0.00	.00	0.00	
ACCOUNT TOTAL				49.99	49.99	0.00	
M5555	57TC	61		1.98CR	1.98CR	0.00	
ACCOUNT TOTAL				1.98CR	1.98CR	0.00	
M5555	257C	67		149.97CR	149.97CR	0.00	
M5555	257C	68		149.97CR	149.97CR	0.00	
M5555	257C	69		149.97CR	149.97CR	0.00	
M5555	257C	70		149.97CR	149.97CR	0.00	
M5555	257C	71		149.97CR	149.97CR	0.00	
ACCOUNT TOTAL				749.85CR	749.85CR	0.00	
M5555	257TC	61		149.97CR	149.97CR	0.00	
ACCOUNT TOTAL				149.97CR	149.97CR	0.00	
M5555	357C	60		149.97CR	149.97CR	0.00	
ACCOUNT TOTAL				149.97CR	149.97CR	0.00	
M5555	457C	66		11.88CR	11.88CR	0.00	
ACCOUNT TOTAL				11.88CR	11.88CR	0.00	
LOCATION TOTAL				1,013.66CR	1,013.66CR	0.00	
M6666	357TC	72		149.31	149.31	0.00	
ACCOUNT TOTAL				149.31	149.31	0.00	
LOCATION TOTAL				149.31	149.31	0.00	
T0331	57C	60		99.98	99.98	0.00	
T0331	57C	66		0.10	.10	0.00	
T0331	57C	67		149.97	149.97	0.00	
T0331	57C	69		0.00	.00	0.00	
T0331	57C	71		0.10	.10	0.00	

EXHIBIT 18

(continued)

SOUTHWESTERN BELL TELEPHONE COMPANY		HN33		PAGE 002 EXHIBIT 18	
AREA-CALLAS		RUN DATE 10-03-72		RETAIN N YRS	
SUMMARY OF PLUG-IN TRANSFERS TO AND FROM CENTRAL STOCK LOCATION T0331					
USE TO PREPOST SN-722 FORMS AFTER AUTHORIZATION					
LOCATION CODE	ACCOUNT CODE	YEAR PLCD	SUMMARIZED AMOUNT	ESTIMATE AMOUNT	ROUTINE AMOUNT
T0331	57C	72	149.31CR	149.31CR	0.00
ACCOUNT TOTAL			100.84	100.84	0.00
T0331	257TC	61	151.95	151.95	0.00
T0331	257TC	68	149.97	149.97	0.00
T0331	257TC	69	149.97	149.97	0.00
T0331	257TC	70	149.97	149.97	0.00
T0331	257TC	71	149.97	149.97	0.00
ACCOUNT TOTAL			751.83	751.83	0.00
T0331	357TC	66	11.88	11.88	0.00
ACCOUNT TOTAL			11.88	11.88	0.00
LOCATION TOTAL			864.55	864.55	0.00
X2222	37C	66	0.10CR	.10CR	0.00
X2222	37C	71	0.10CR	.10CR	0.00
ACCOUNT TOTAL			0.20CR	.20CR	0.00
LOCATION TOTAL			0.20CR	.20CR	0.00

EXHIBIT 18

(continued)

SOUTHWESTERN BELL TELEPHONE COMPANY HN65 PAGE 003 EXHIBIT 18
 AREA-DALLAS RUN DATE 10-03-72 RETAIN N YRS
 SUMMARY OF PLUG-IN TRANSFERS TO AND FROM CENTRAL STOCK LOCATION T0331
 USE TO PREPOST SN-722 FORMS AFTER AUTHORIZATION

LOCATION	ACCOUNT	YEAR	SUMMARIZED	ESTIMATE	ROUTINE
CODE	CODE	PLCD	AMOUNT	AMOUNT	AMOUNT
			FINAL TOTALS	EST TOTALS	RTN TOTALS
			1,414.15	1,414.15	0.00
			DEBIT		
			1,414.15CR	1,414.15CR	0.00
			CREDIT		

IN BALANCE

TOTAL DETAIL RECORDS 32 TOTAL SUMMARY CARDS 26

 *APPROVED *
 *TITLE *
