

43 TELEPRINTER 5-LEVEL PAPER TAPE PUNCH ASSEMBLY

PARTS

1. GENERAL

1.01 This section provides information on maintenance spare parts for the 43 Teleprinter 5-Level Paper Tape Punch Assembly.

1.02 Whenever this section is reissued, the reason will be listed in this paragraph.

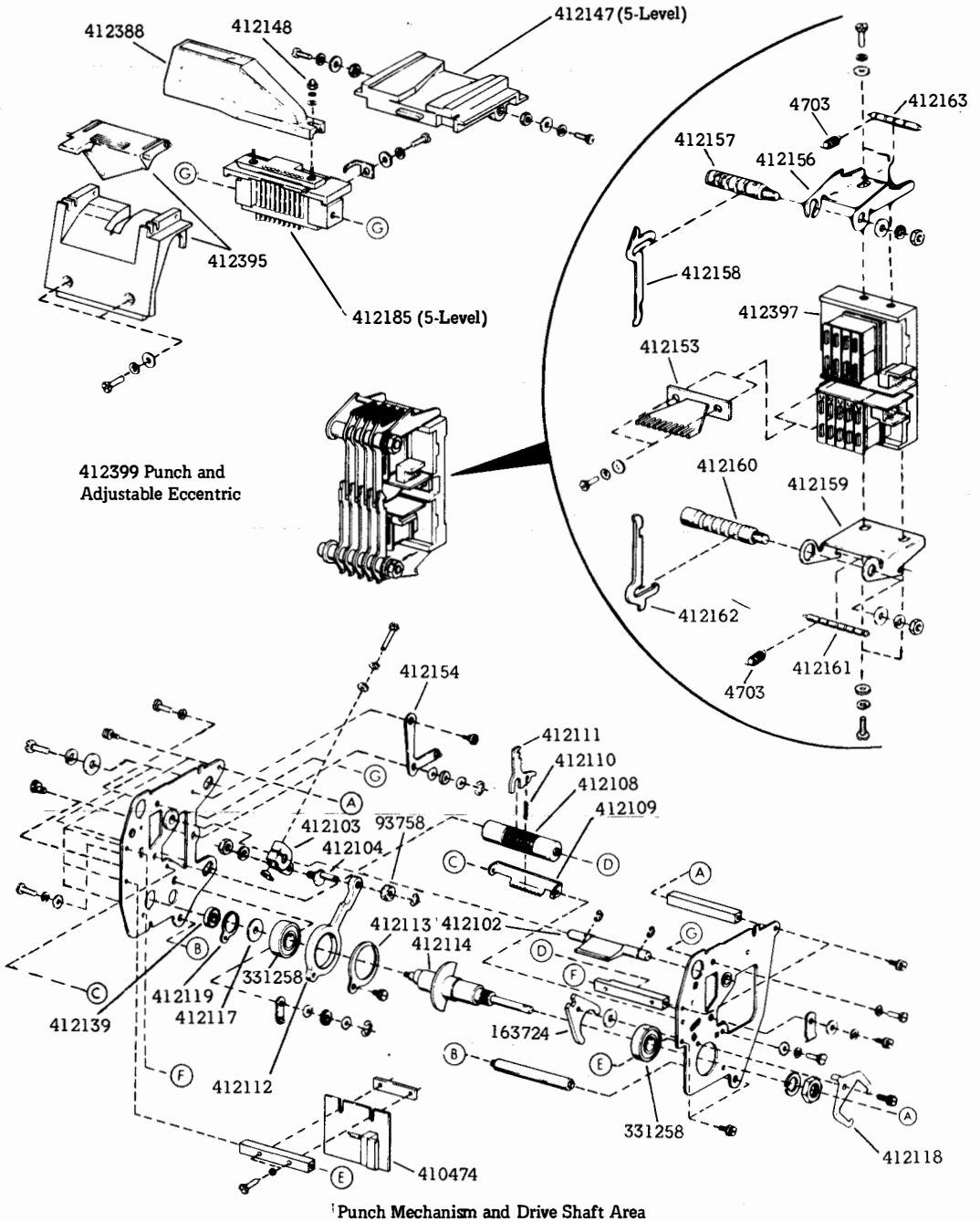
1.03 Part numbers are listed in the index in numerical order and indicate the page on which the parts appear. Asterisked numbers, stocked as "List 1", indicate a maintenance spare stocking ratio of one spare for the first twenty stations and an additional spare for each additional

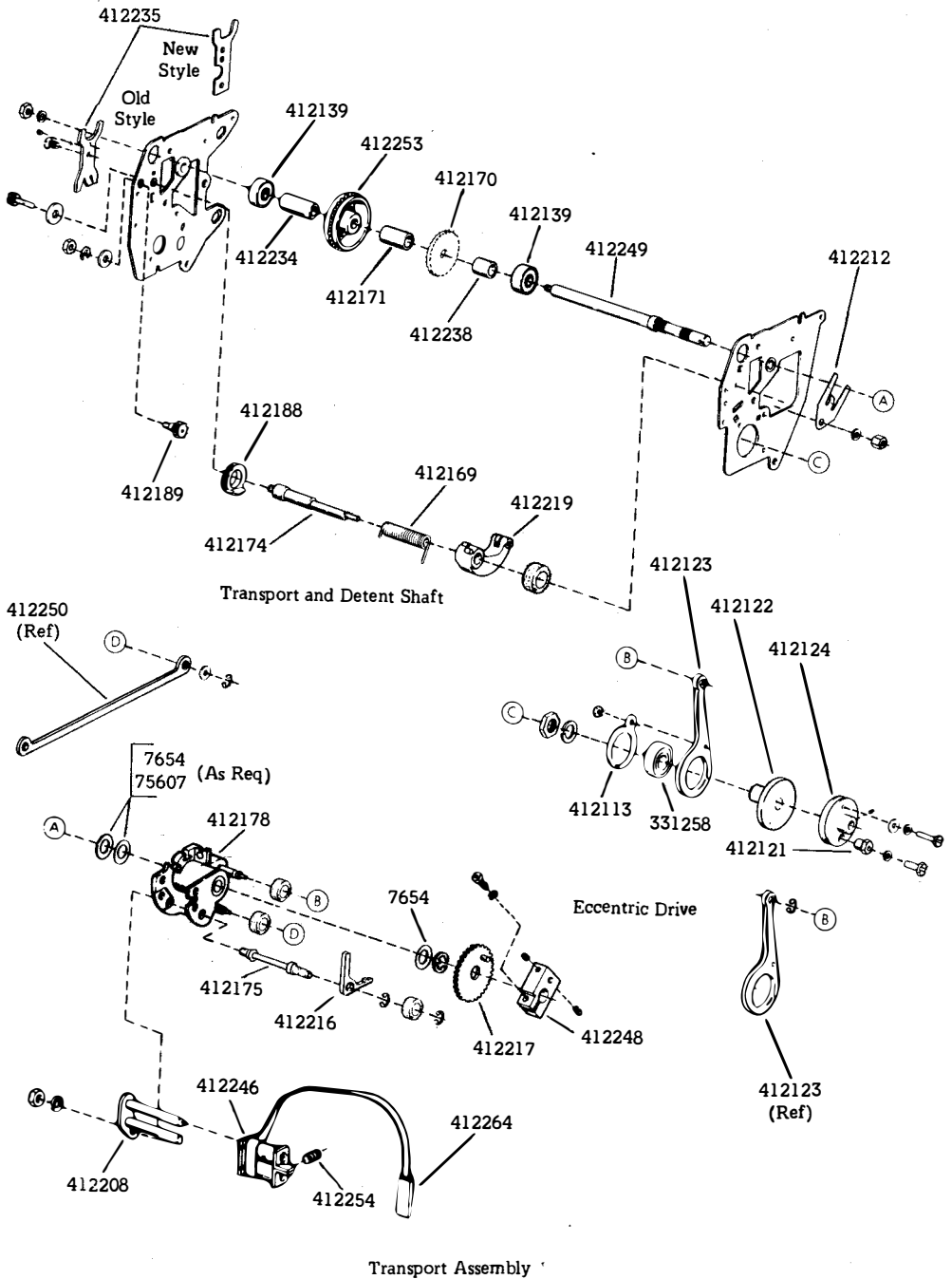
30 stations in a maintenance area. Part numbers without asterisks, are not maintenance spares but may be ordered separately for local repair of the Paper Tape Unit.

1.04 The troubleshooting and disassembly/reassembly information for these parts is provided in 574-505-300 and 574-505-720 respectively.

1.05 When ordering replaceable parts or components, unless otherwise specified, prefix each part number with the letter "TP" (ie, TP410055).

2. PARTS





Transport Assembly

## SECTION 574-505-800

## 3. NUMERICAL INDEX

3.01 Parts listed without asterisks are not maintenance spares but may be ordered as needed for local repair of major components or terminals.

Part Number	Description and Page Number	Part Number	Description and Page Number	Part Number	Description and Page Number
4703	Spring 2	412147	Tape-Entry Guide 2	412212	Clamp, Bearing 3
7654	Shim 3	412148	Acorn-Nut 2	412216	Pawl 3
75607	Shim 3	412153	Armature Comb 2	412217	Wheel, Ratchet 3
163724	Clamp, Plate 2	412154	Link 2	412219	Detent Arm Assembly 3
331258	Bearing 2,3	412156	Bracket, Upper Guide 2		
410474	Card, Circuit 2	412157	Upper Guide 2	412234	Spacer 3
412102	Bail 2	412158	Upper Armature 2	412235	Plate, Adjusting 3
412103	Clamp 2	412159	Bracket, Lower Guide 2	412238	Spacer 3
412104	Stud, Eccentric 2	412160	Lower Guide 2	412246	Magnet Coil Assembly 3
412108	Shaft, Selector 2	412161	Post, Lower Spring 2		
412109	Spring, Bracket 2	412162	Lower Armature 2	412248	Clamp 3
412110	Spring, Extension 2	412163	Post, Upper Spring 2	412249	Shaft, Transport 3
412111	Lever, Selector 2	412169	Spring 3	412250	Link 3
412112	Link 2	412170	Starwheel 3	412253	Wheel, Feed 3
412113	Clamp, Plate 2	412171	Spacer 3	412254	Spring, Pawl 3
412114	Drive Shaft 2	412174	Shaft, Eccentric	412264	Cable, Transmitter
412117	Spacer 2		Detent 3		Coil 3
412118	Clamp, Bearing 2	412175	Shaft, Pawl 3	412388	Chad Chute w/Strip 2
412119	Ring, Retainer 2	412178	Housing 3		
412121	Bushing, Eccentric 3	412185	Punch Block 2	412395	Housing 2
412122	Plate 3	412188	Pinion, Driven 3	412397	Magnet & Frame
412123	Link 3	412189	Pinion, Driving 3		Assembly 2
412124	Pulley 3	412208	Magnet Core Assembly 3	*412399	Punch and Adjustable Eccentric 2
412139	Bearing 2,3				

\*A maintenance spare stocking ratio of one spare for the first twenty stations and one additional spare for each additional 30 stations in a maintenance area.