

28E AND 28H TRANSMITTER-DISTRIBUTOR UNIT

LUBRICATION

CONTENTS	PAGE
1. GENERAL.....	1
2. PARTS TO BE LUBRICATED	2
A. Transmitter-Distributor Unit . .	
Center-plate assembly.	7, 9
Clutch trip assembly.	4, 6
Front plate assembly.	10
Main shaft and oil reservoir. . .	7, 8
Sensing and feed mechanism. . .	10, 12
Signal-contact assembly.	4, 5
Stabilizer.	10, 11
Tape-guide plate.	2, 3
Transfer mechanism.	10, 13
B. Auxiliary Features.	14
Split-bail code reading	
contacts.	14
Timing bail	15

1. GENERAL

1.01 This section provides the lubrication procedures for the maintenance of the 28E and 28H transmitter-distributor units.

1.02 Lubrication of the apparatus before it is placed in service should be governed by the principles given in the section covering preparation of teletypewriter apparatus for installation. After that, because of varying conditions at each station, the apparatus should be lubricated as often as specified by local instructions. The following lubrication intervals

are suggested as a guide for use under normal operating conditions.

Operating Speed (Words per Minute)	Lubrication Interval (Whichever Occurs First)
60	3000 Hours or 1 Year
75	2400 Hours or 9 Months
100	1500 Hours or 6 Months

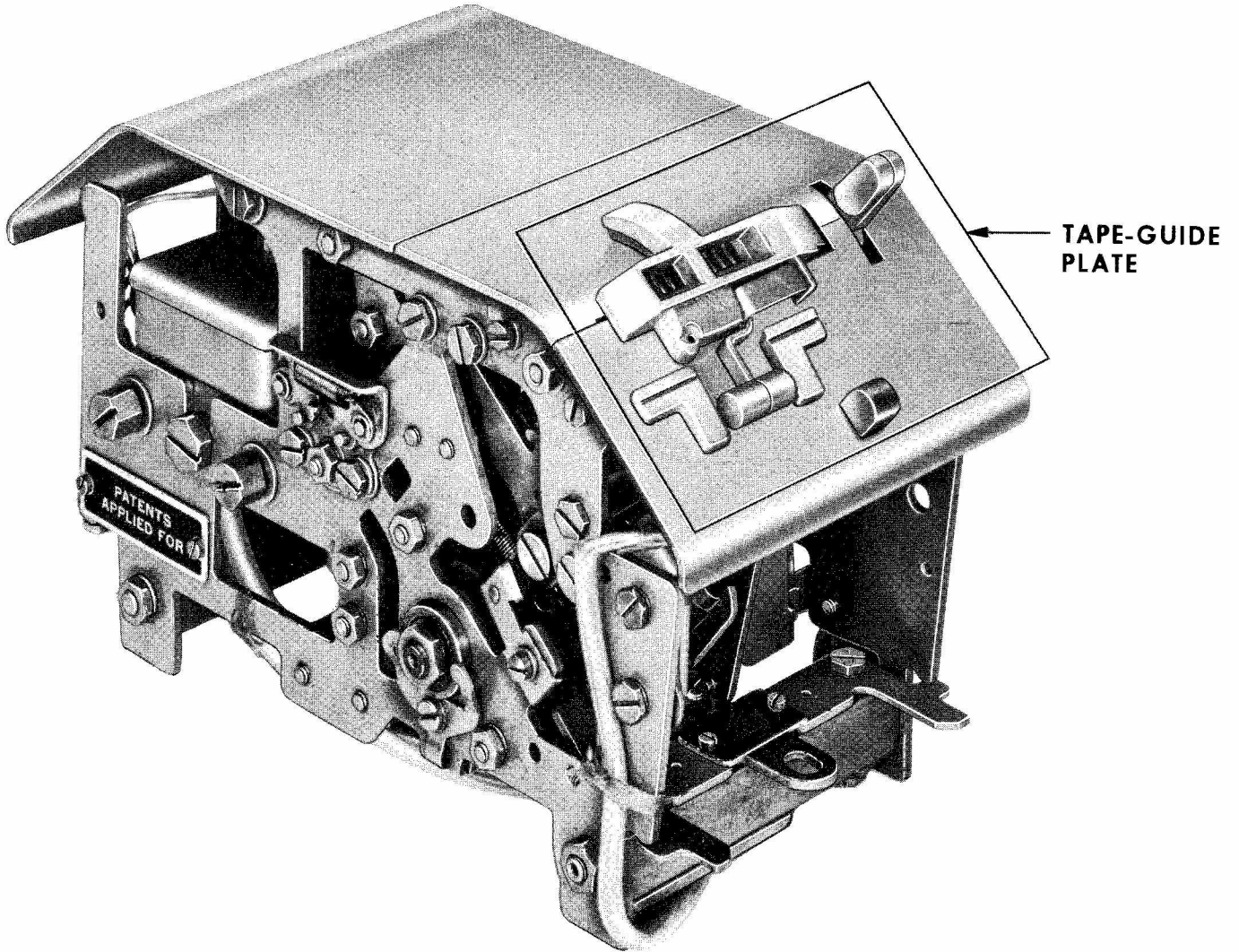
1.03 The lubricants to be used and their methods of application are those specified in the section covering general lubrication of teletypewriter apparatus. The lubrication symbols used herein are the same as those given in that section except that the symbol O which, according to the general lubrication section, indicates one or two drops of oil, is used in this section to mean only one drop of oil. Symbols, such as O2, O3, or O6, are used herein to specify that two, three, or six drops, respectively, are to be applied at the points indicated.

1.04 The photographs in this section refer to particular line drawings of mechanisms and the location of the mechanisms on the unit. Parts in the line drawings are shown in an upright position unless otherwise indicated. If it is difficult to lubricate a part in the upright position, the apparatus should be turned to a position in which the part is more accessible.

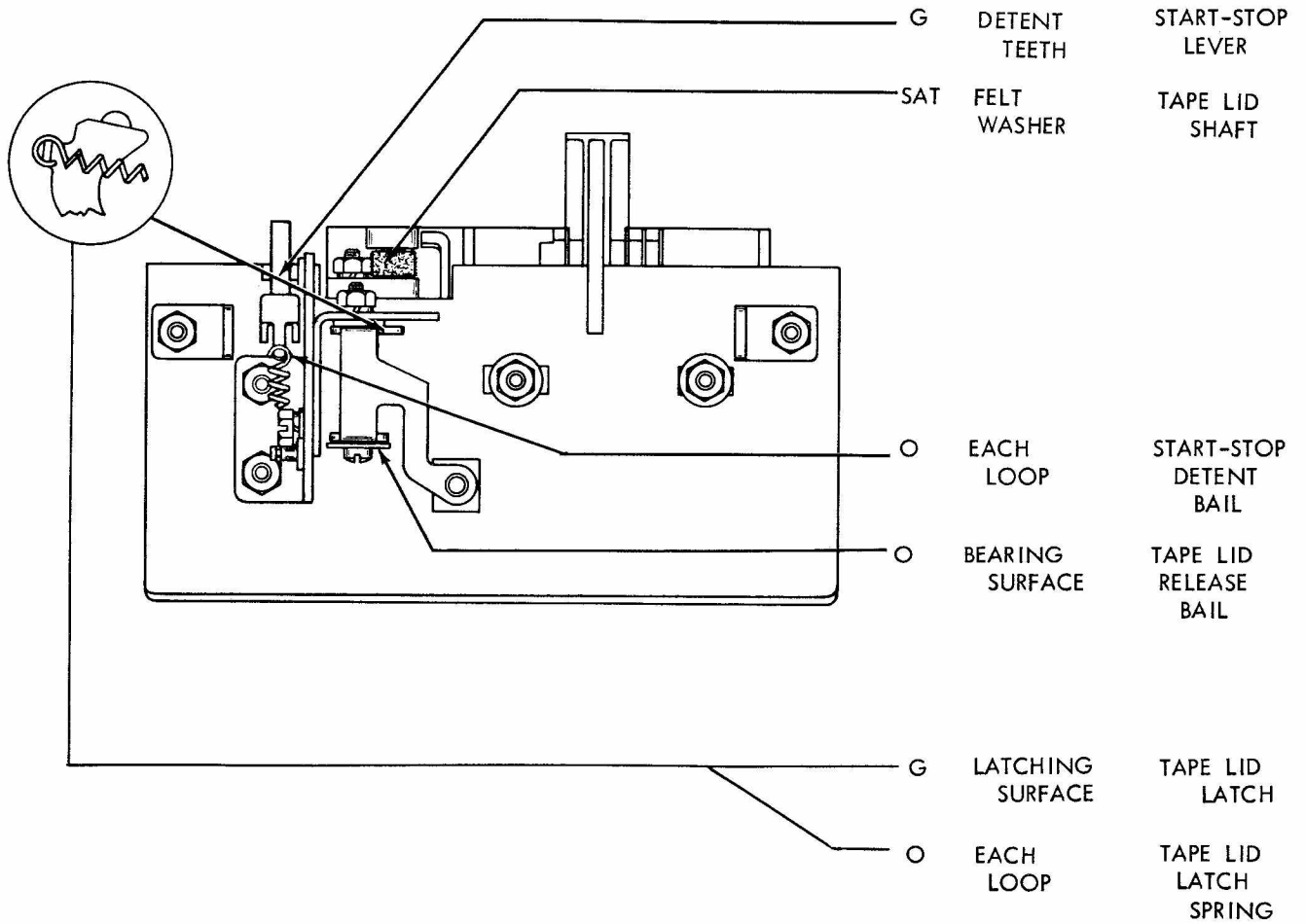
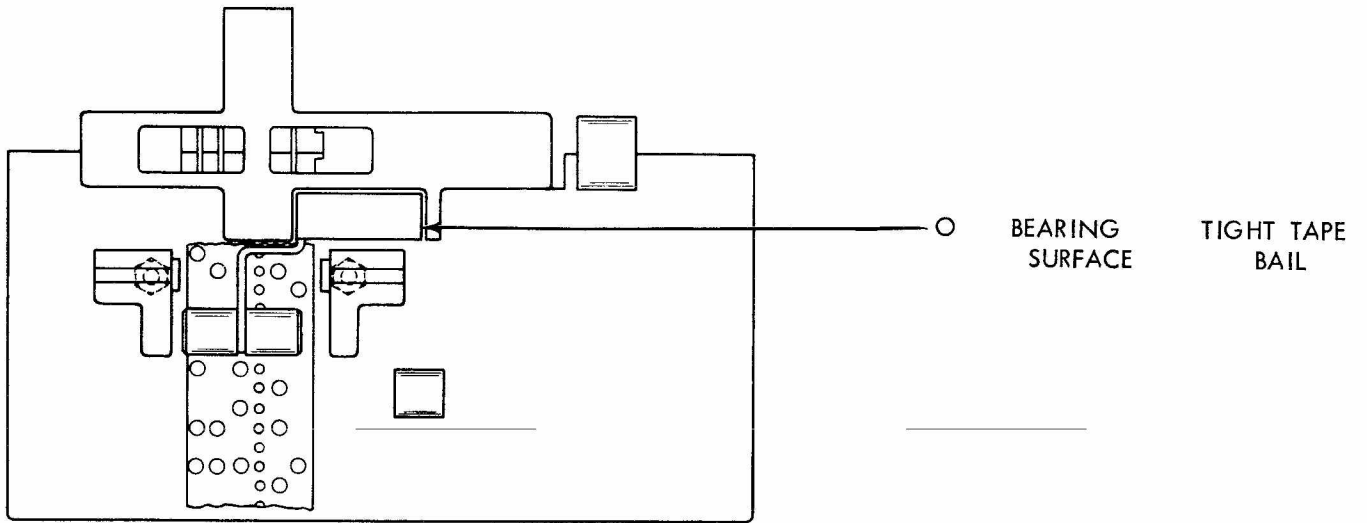
2. PARTS TO BE LUBRICATED

A. Transmitter-Distributor Unit

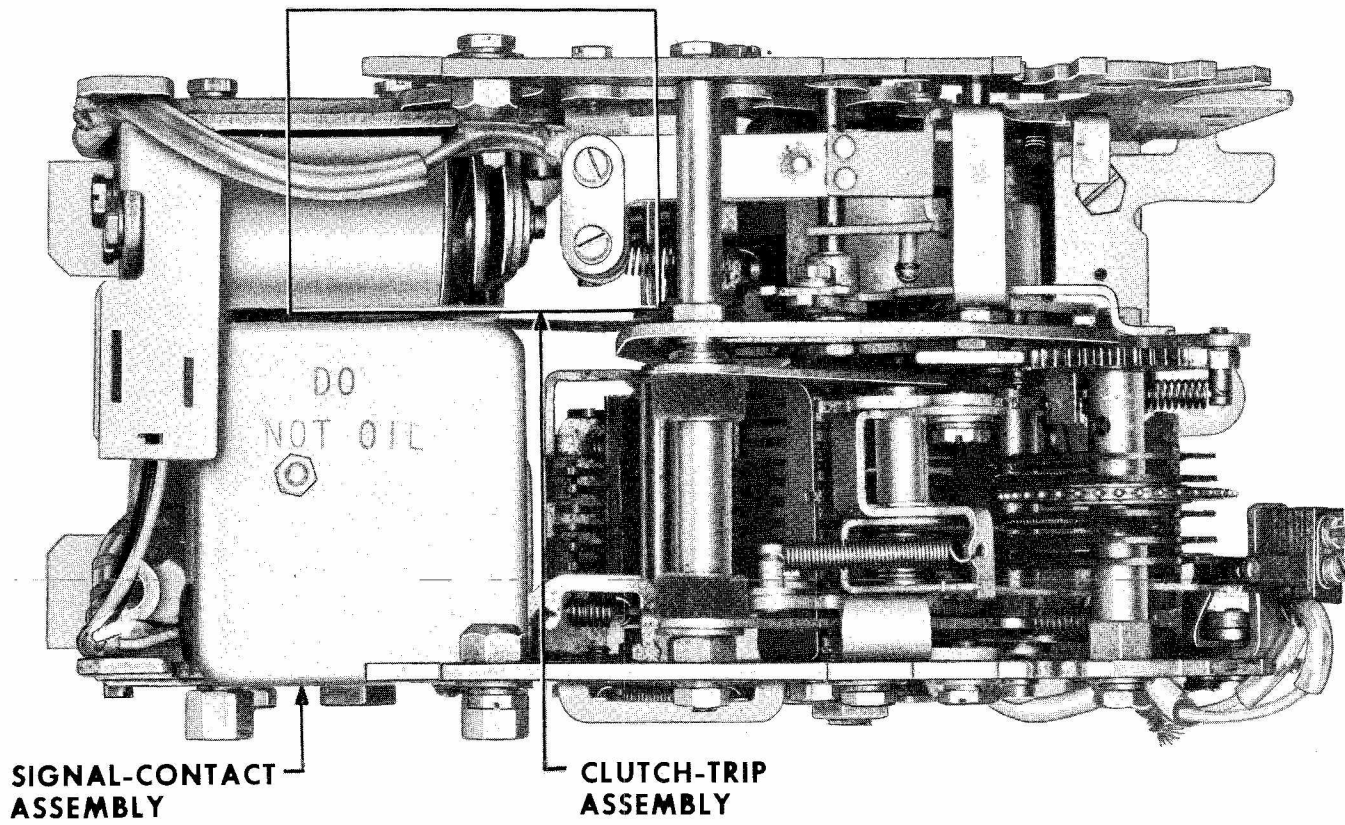
2.01 Tape-guide Plate



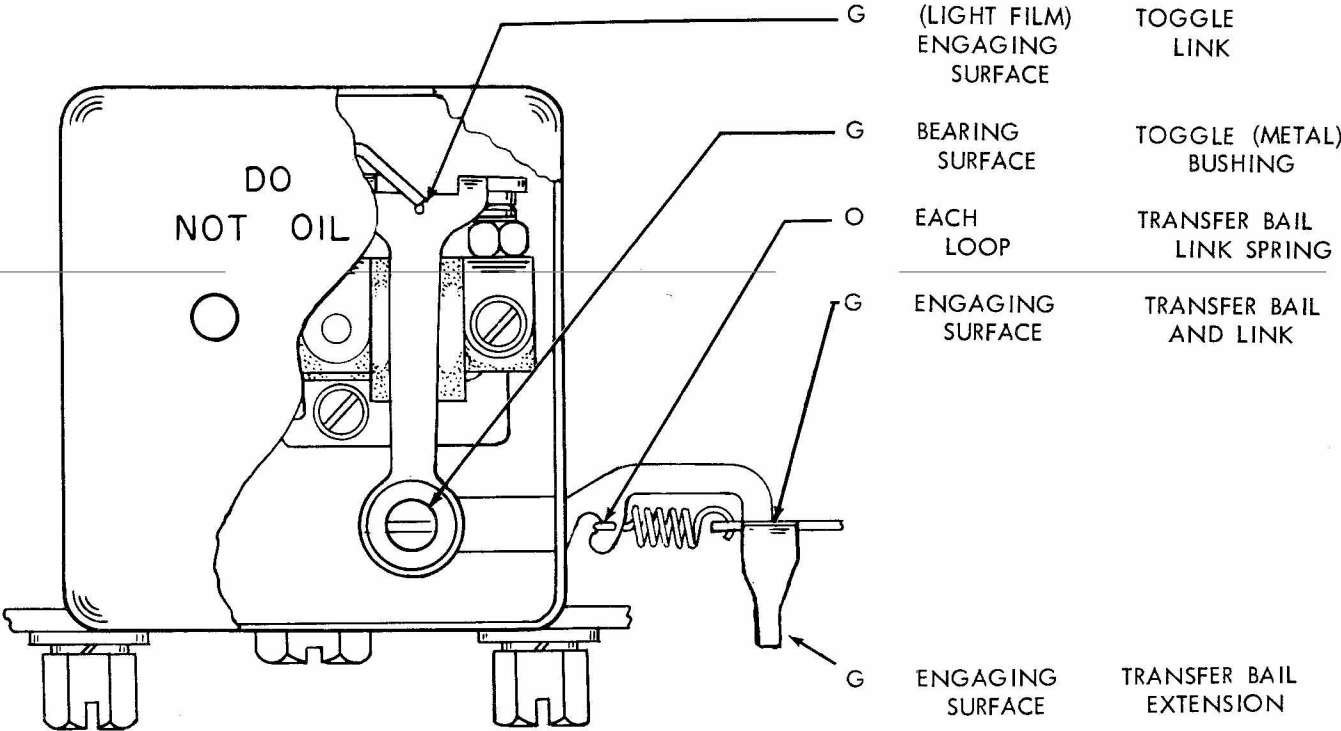
2.02 Tape-guide Plate



2.03 Signal-contact and Clutch-trip Assemblies (Top View)

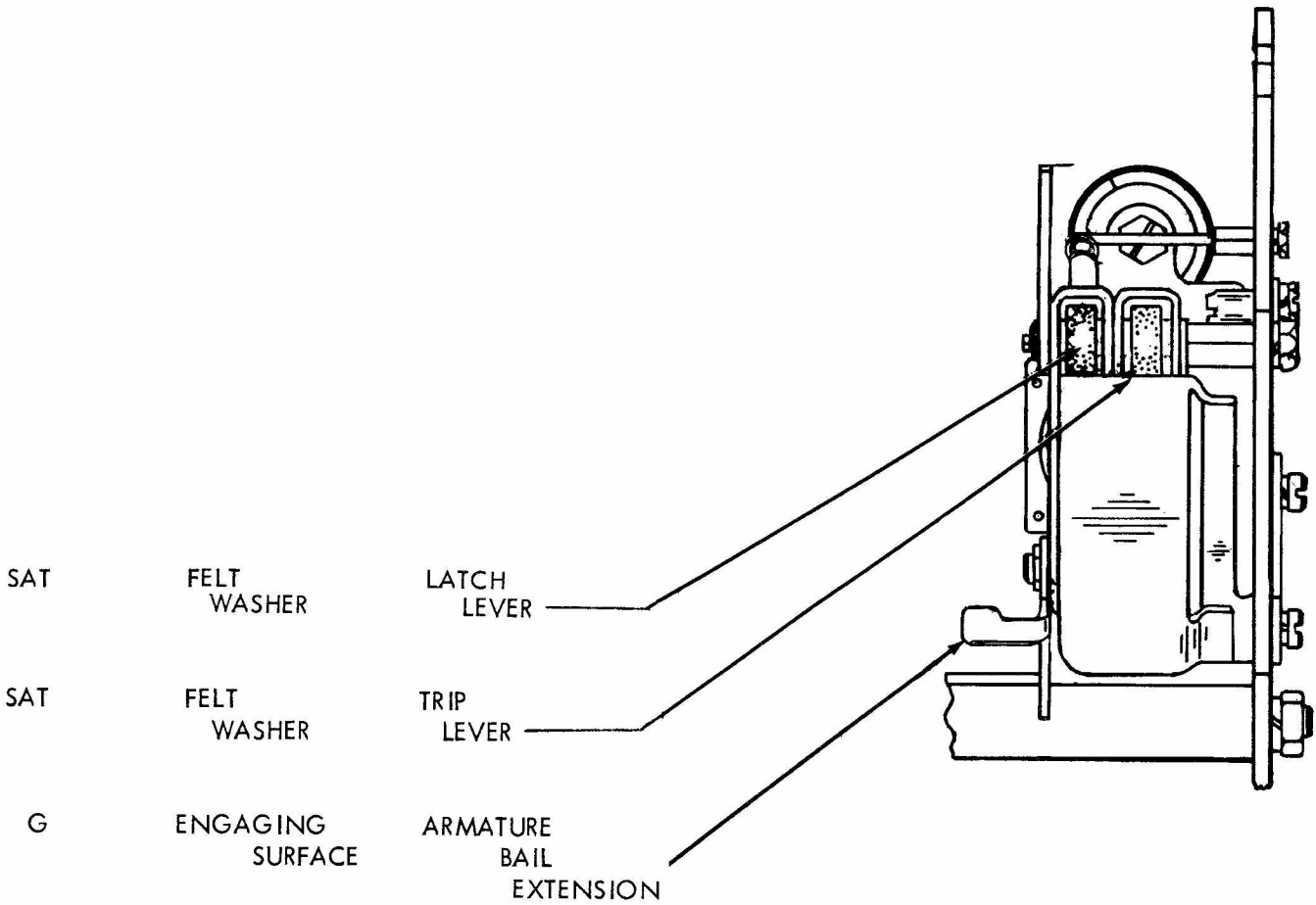
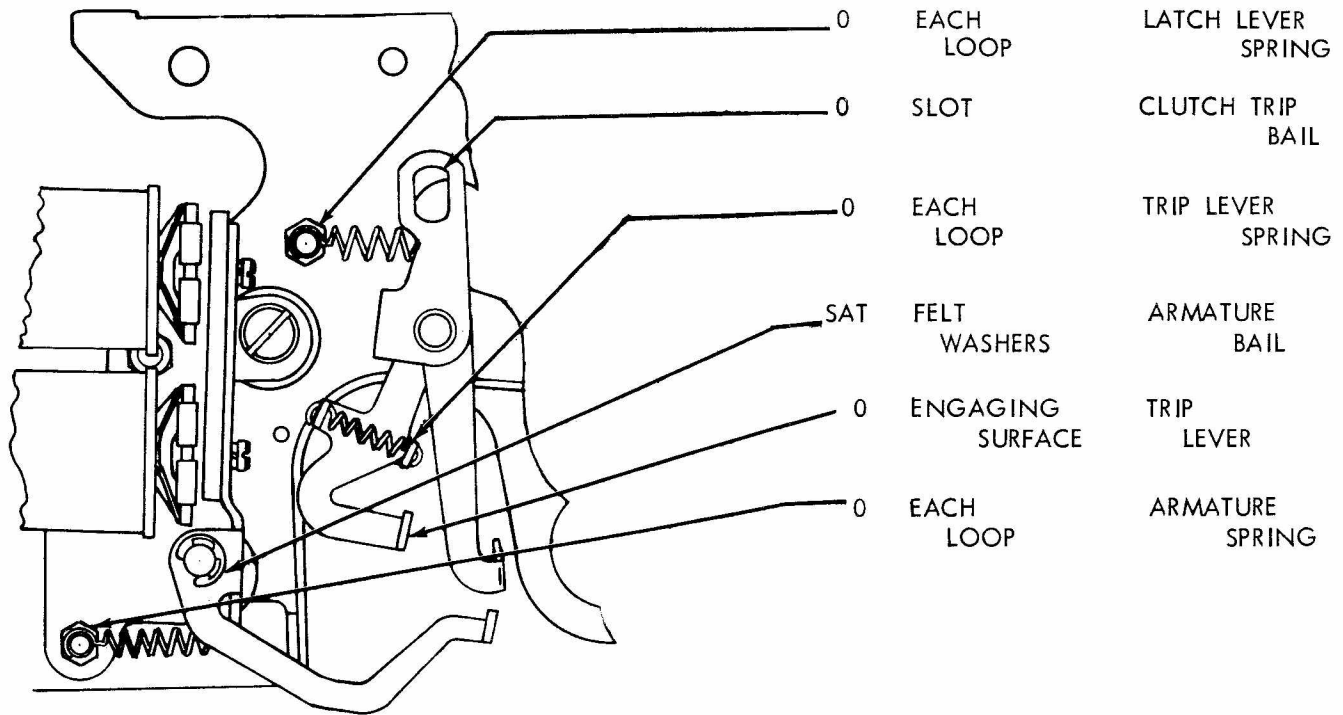


2.04 Signal-contact Assembly

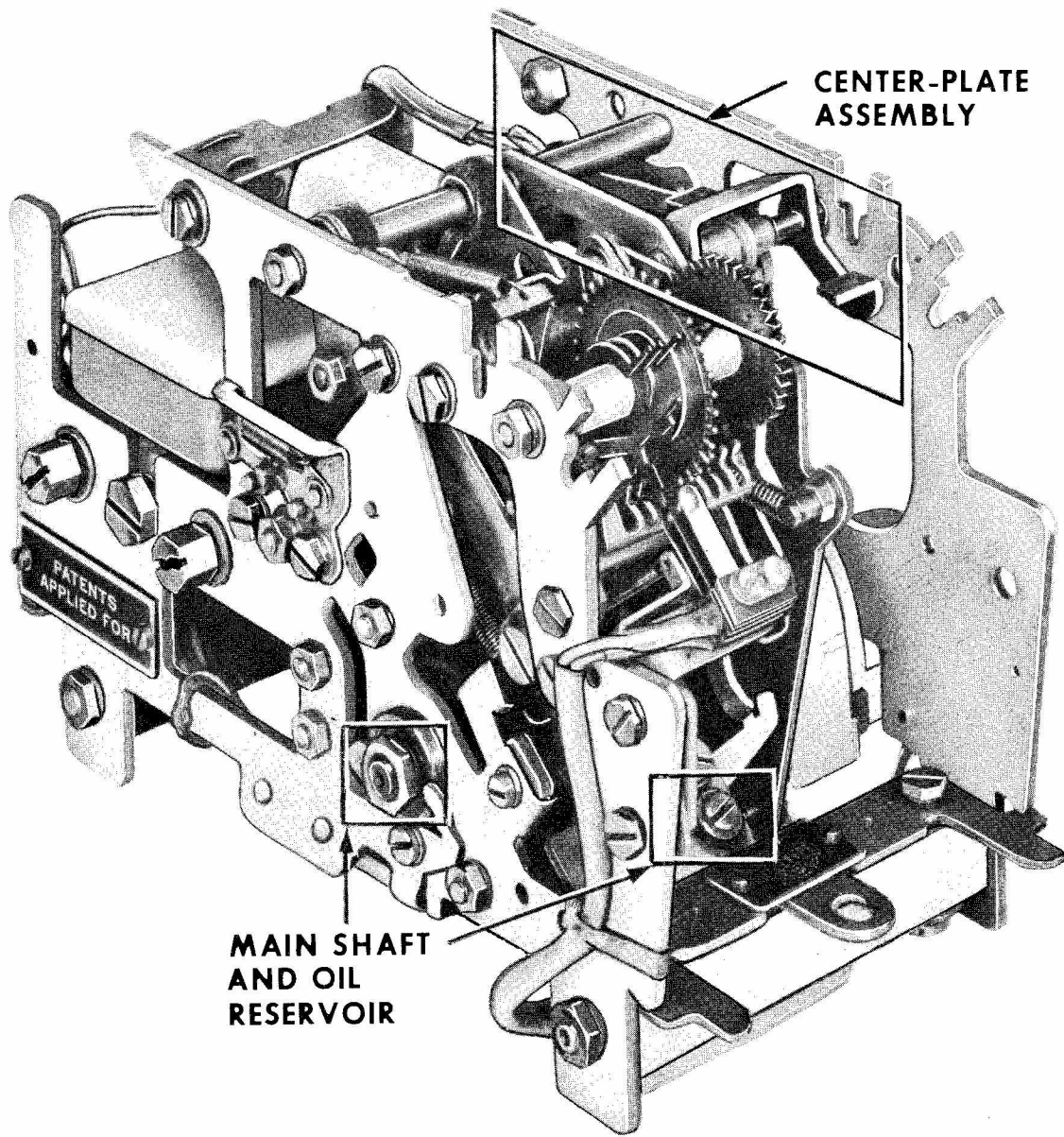


NOTE: THE MARKING "DO NOT OIL" ON THE SIGNAL-CONTACT BOX SHOULD BE INTERPRETED LITERALLY. PORTIONS OF THE MECHANISM SHOULD BE GREASED AS INDICATED, BUT NO OIL SHOULD BE USED.

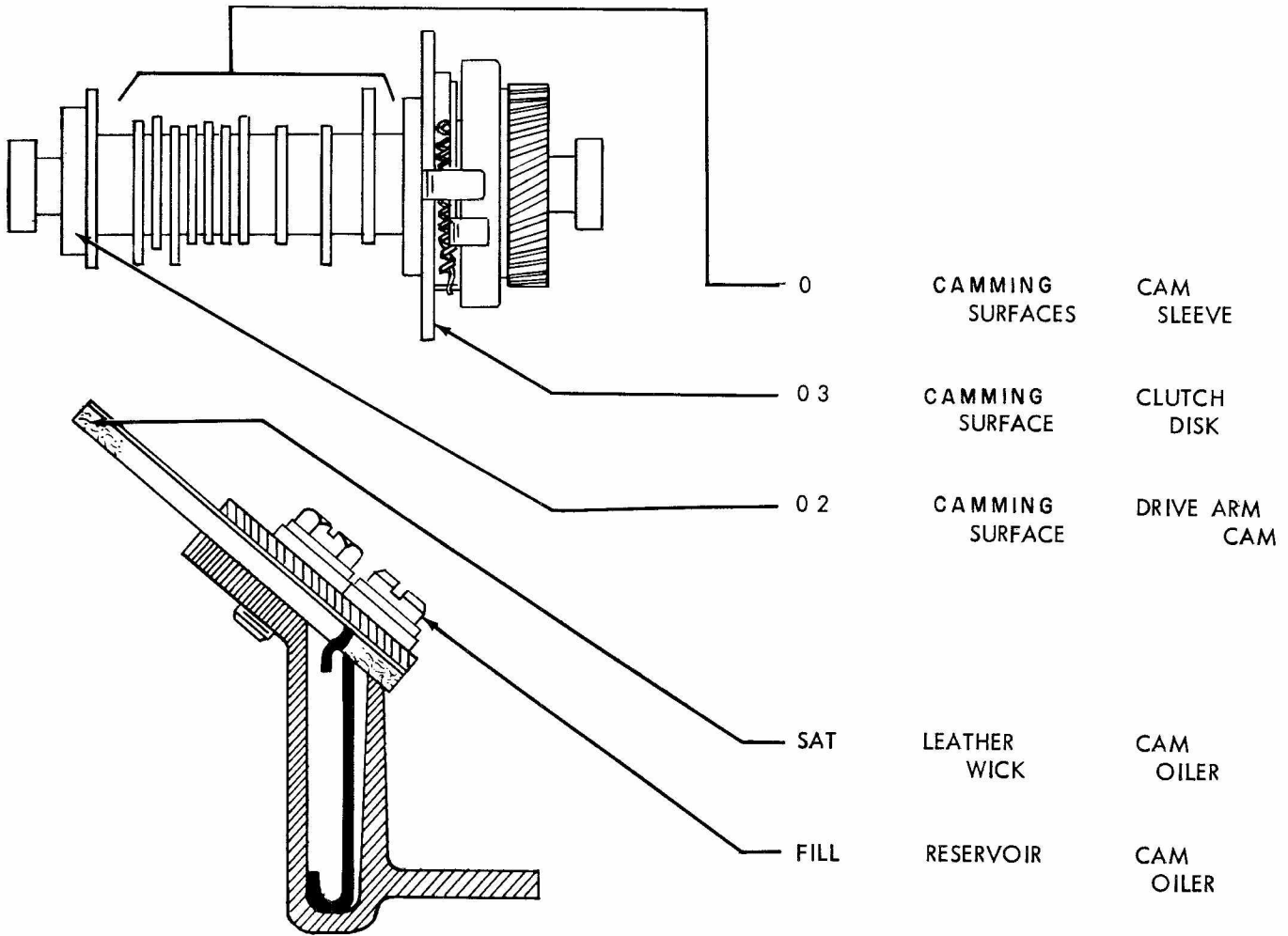
2.05 Clutch Trip Assembly



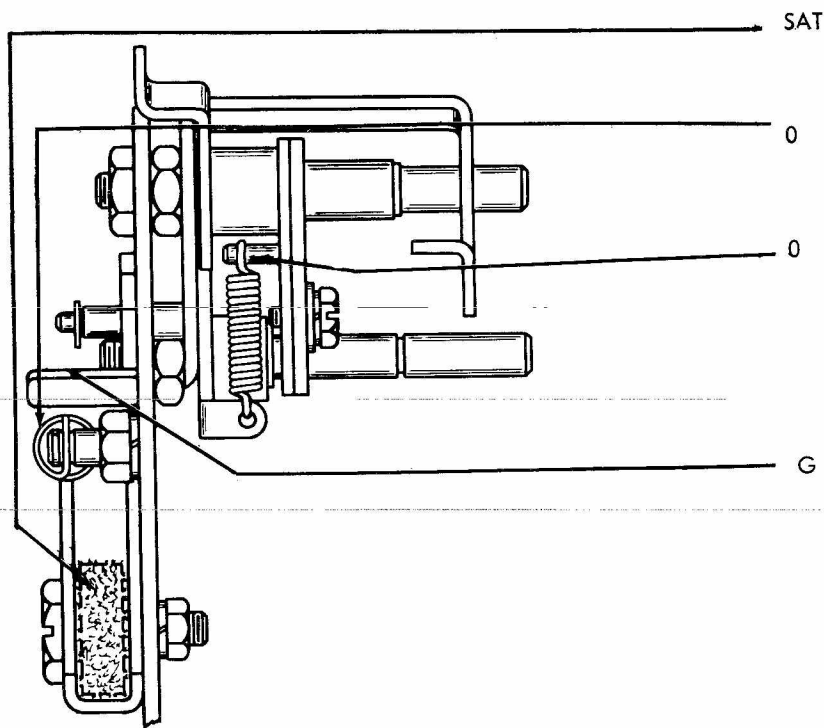
2.06 Main Shaft, Oil Reservoir, and Center-plate Assembly



2.07 Main Shaft and Oil Reservoir



2.08 Center-plate Assembly

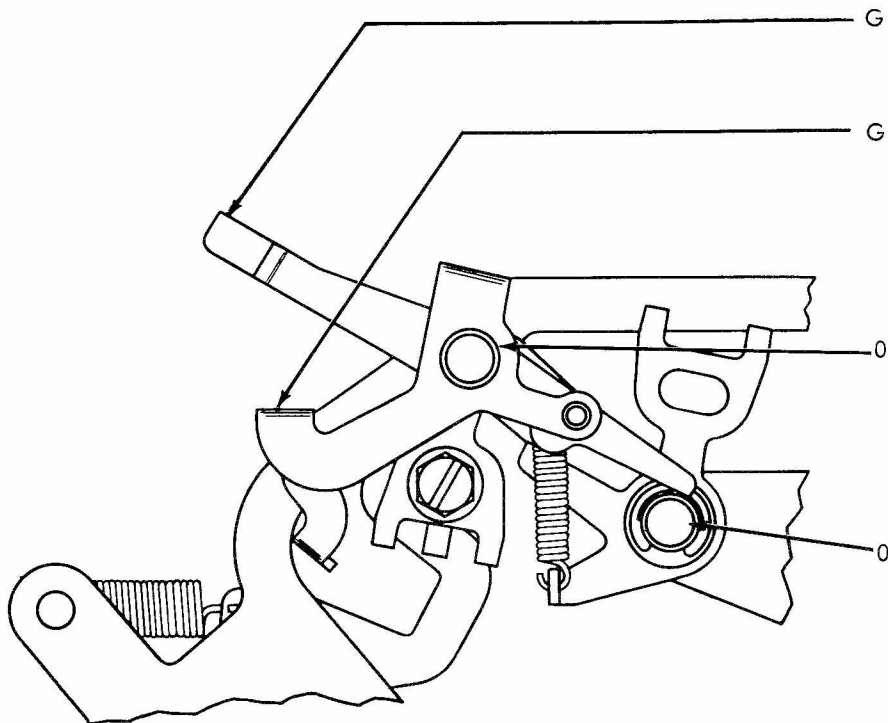


FELT WASHER RATCHET DETENT BAIL

BOTH LOOPS DETENT BAIL SPRING

BOTH LOOPS TIGHT TAPE ARM

ENGAGING SURFACE START-STOP BAIL EXTENSION



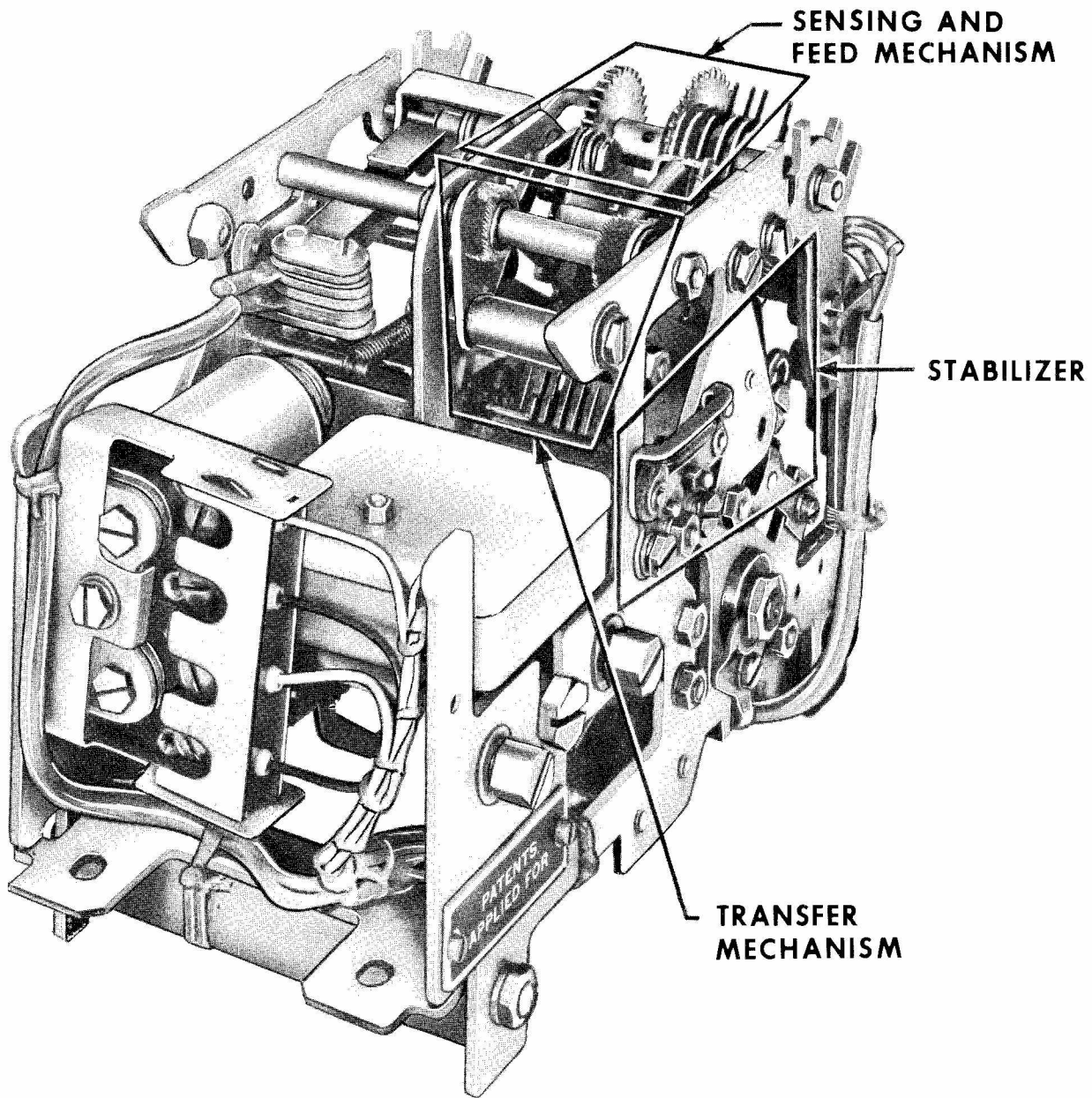
ENGAGING SURFACE TIGHT TAPE ARM

ENGAGING SURFACE START-STOP BAIL

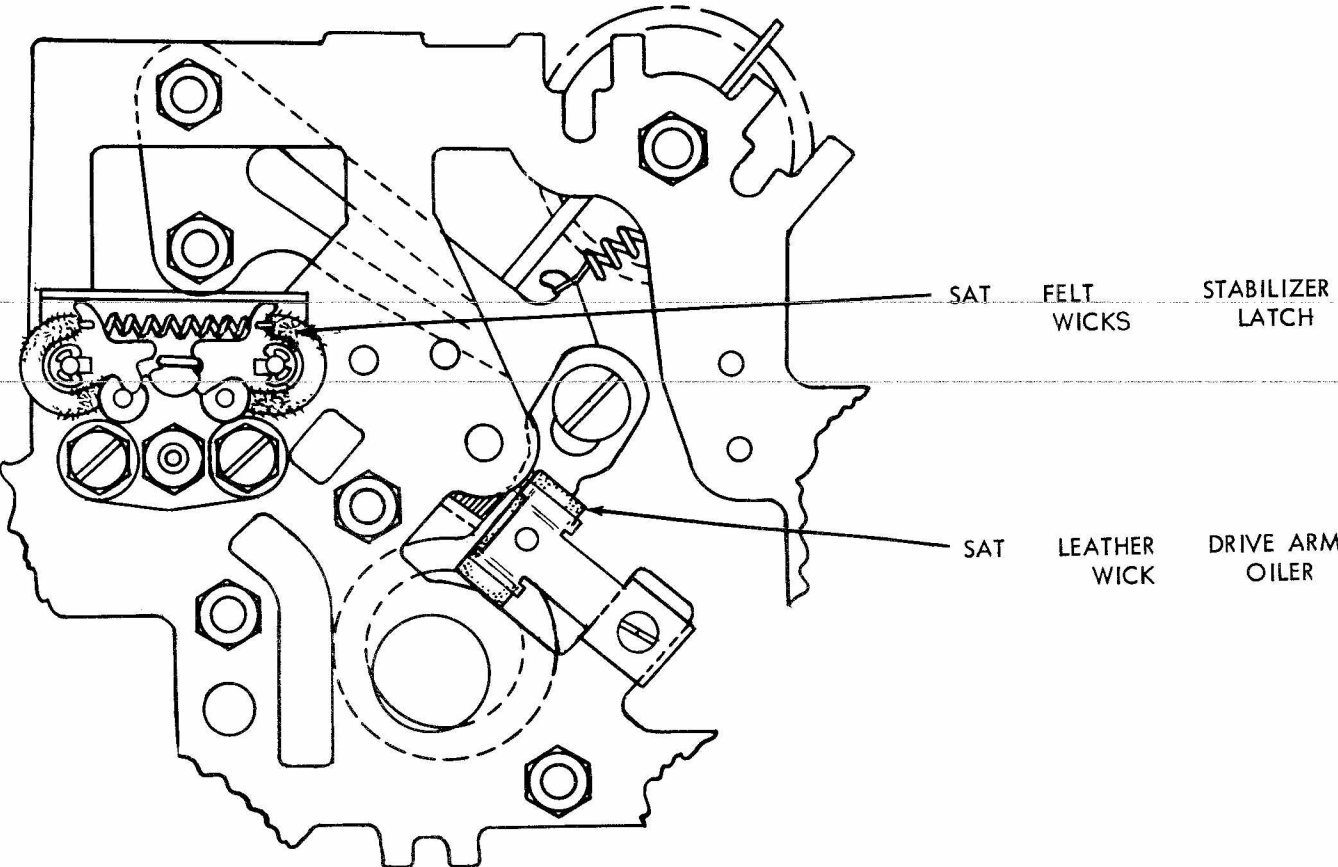
BEARING SURFACE START-STOP BAIL

BEARING SURFACE YIELD ARM

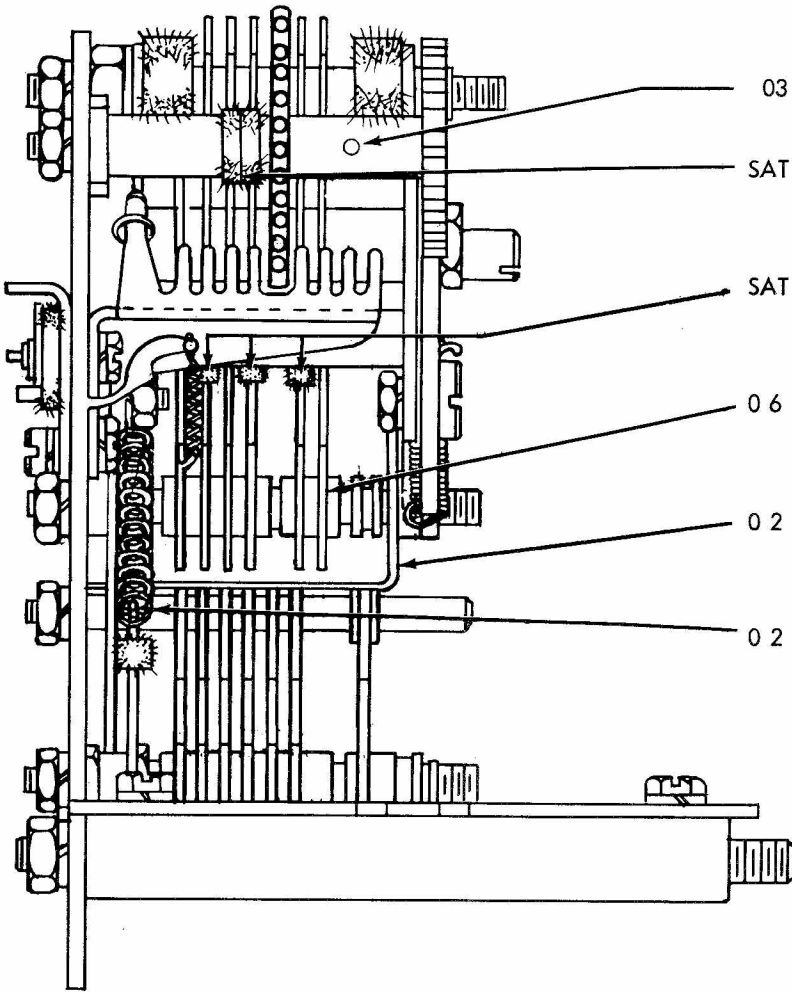
2.09 Front Plate Assembly



2.10 Stabilizer

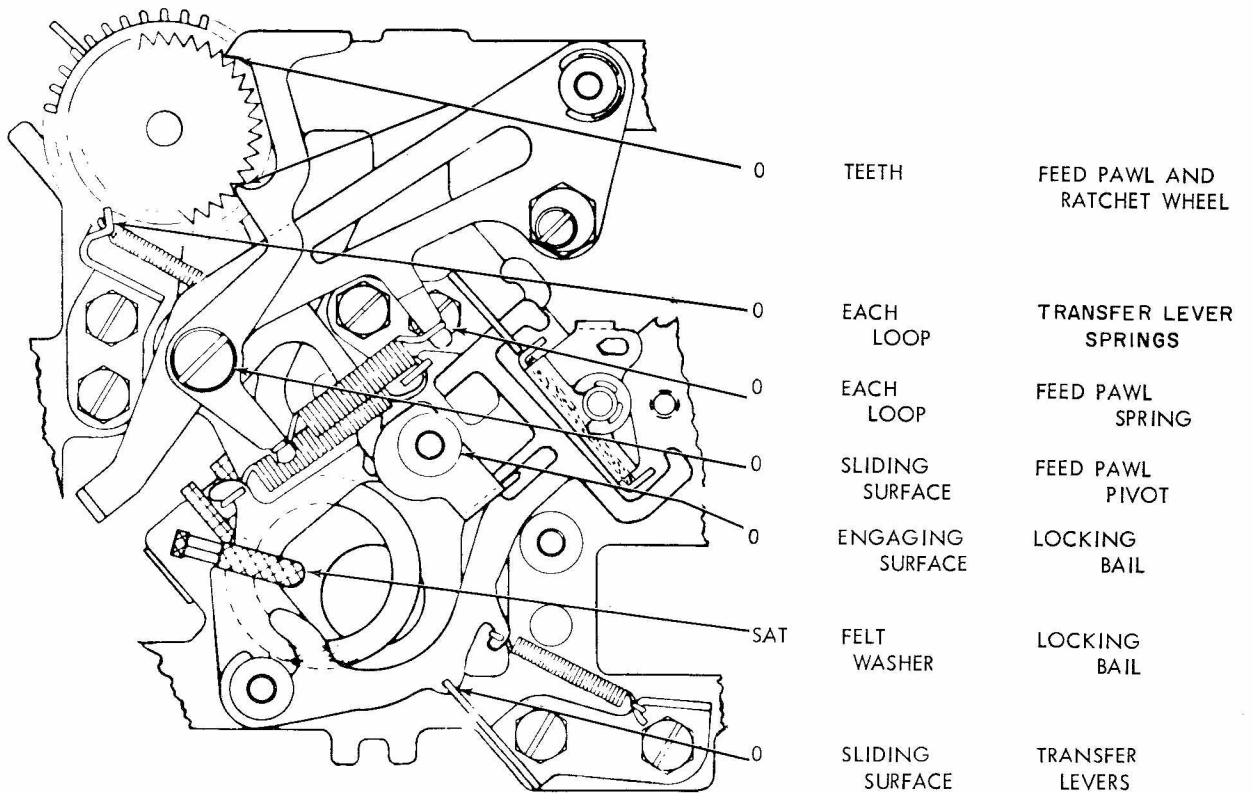
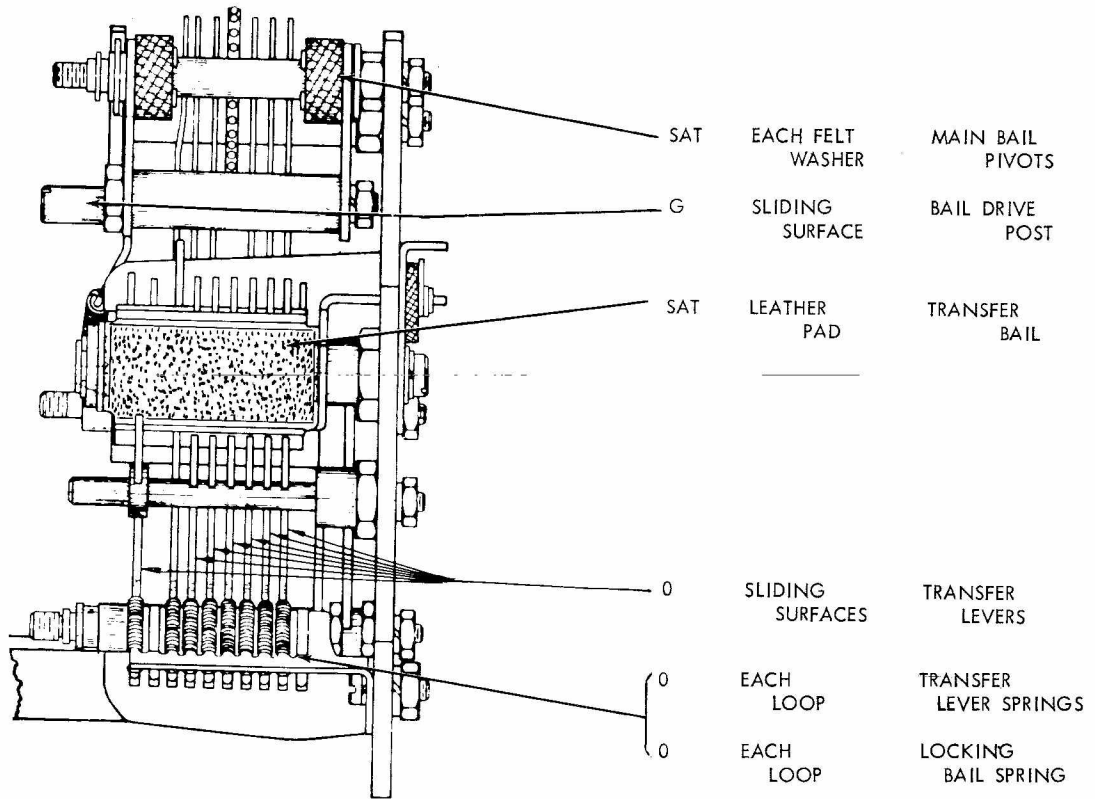


2.11 Sensing and Feed Mechanism



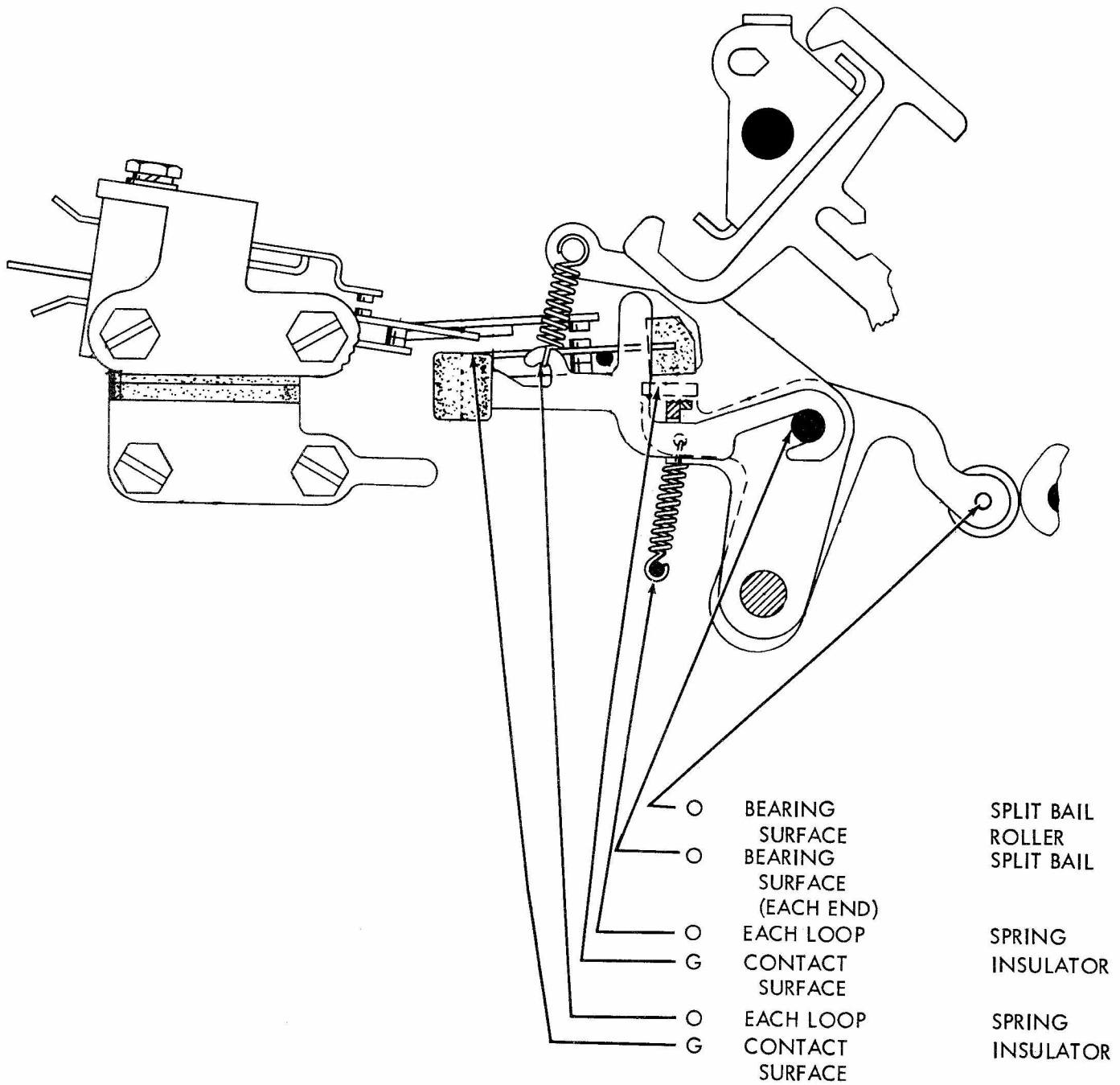
- | | | |
|-----|-----------------|------------------------|
| 03 | SHAFT | FEED WHEEL |
| SAT | FELT WICKS | FEED WHEEL BEARING |
| SAT | FELT WICKS | SENSING PINS |
| 0 6 | SLIDING SURFACE | SENSING PIN GUIDE POST |
| 0 2 | SLIDING SURFACE | LOCKING BAIL |
| 0 2 | BOTH LOOPS | LOCKING BAIL SPRING |

2.12 Transfer Mechanism

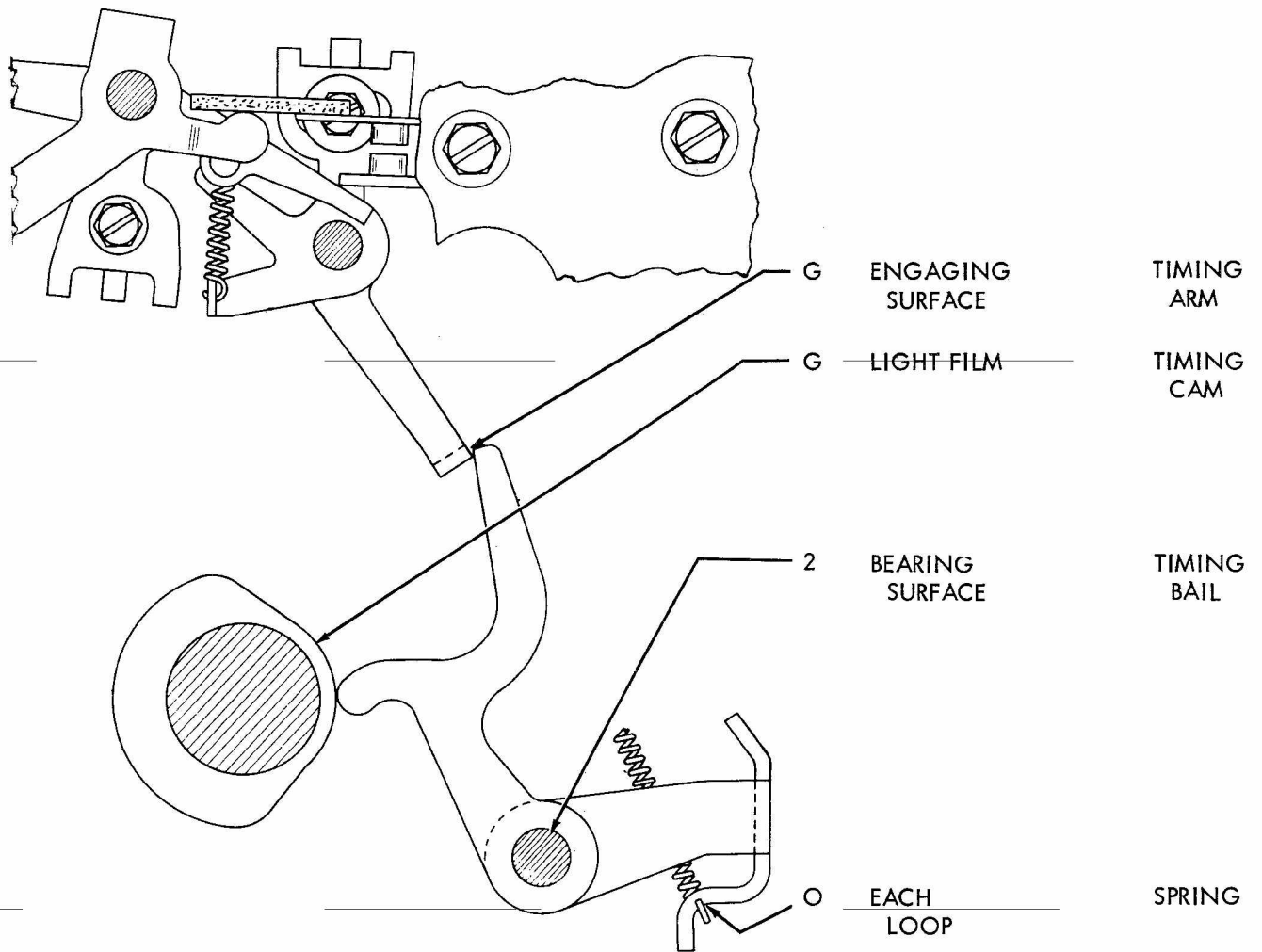


B. Auxiliary Features

2.13 Split-bail Code Reading Contacts (When Equipped With Multiple Wire Output Facilities)



2.14 Timing Bail (When Equipped With Tabulator Control)



)

)

)

)

)

)

)

)