

8- TO 5-LEVEL UNIVERSAL STATION CONVERTERS

ACTUAL WIRING DIAGRAMS

CONTENTS	PAGE
1. GENERAL.....	1
2. DIAGRAM INDEX.....	1
1. GENERAL	
1.01 This section is reissued to include the latest issues of the actual wiring diagrams for the 8- to 5-level Signal-to-Tape and Tape-to-Tape Universal Station Converter ter-	

minals. Since this is a general revision, marginal arrows have been omitted.

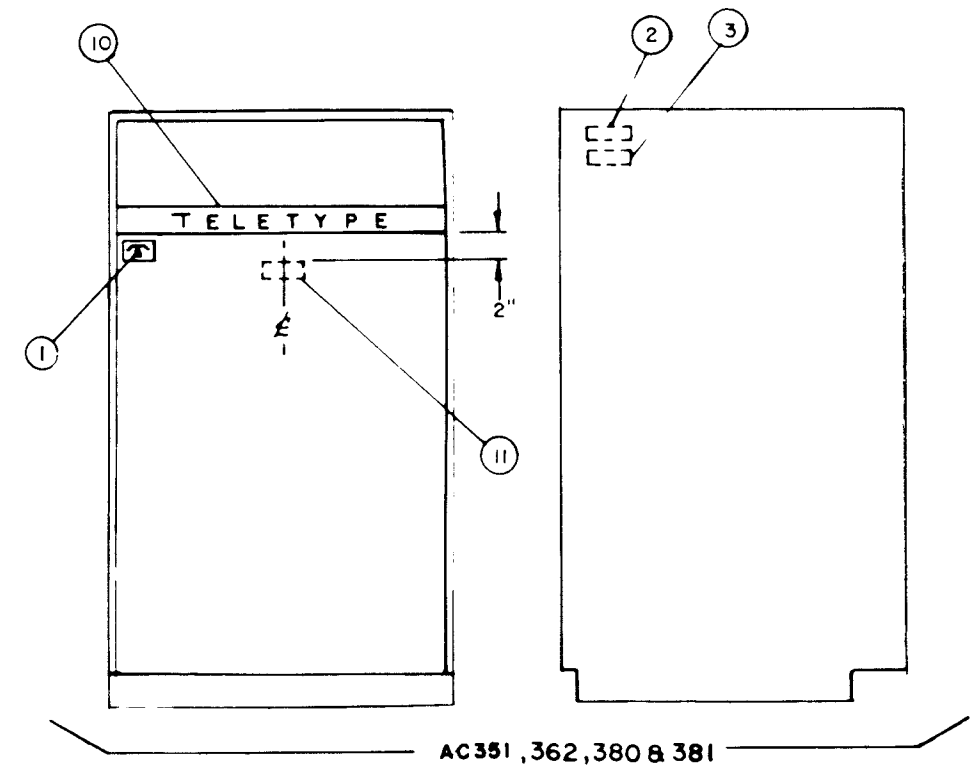
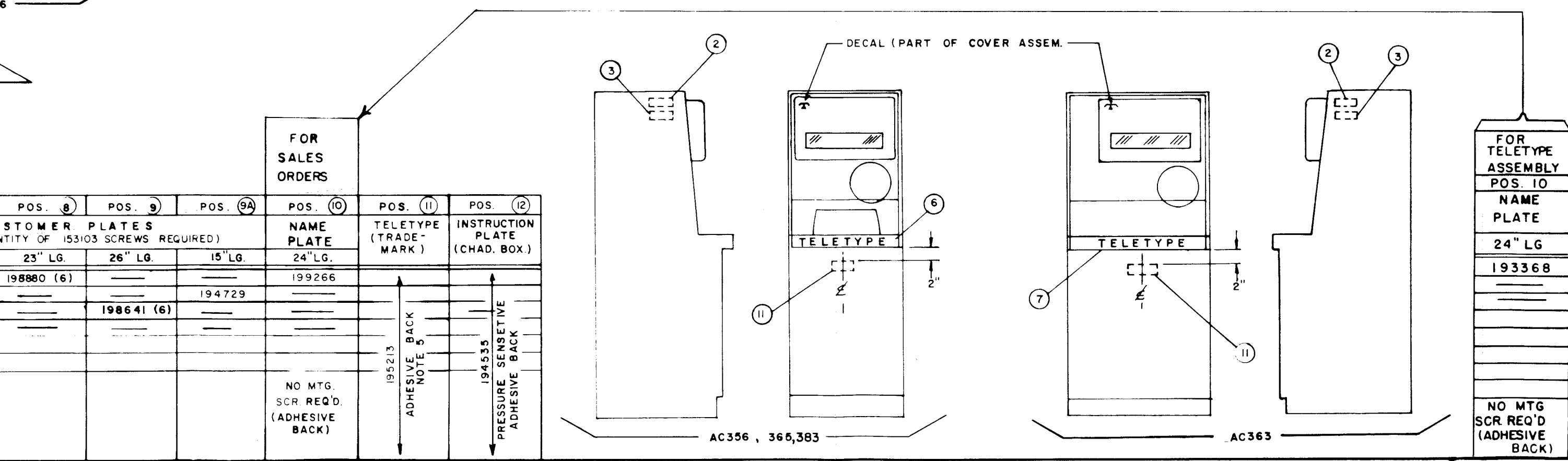
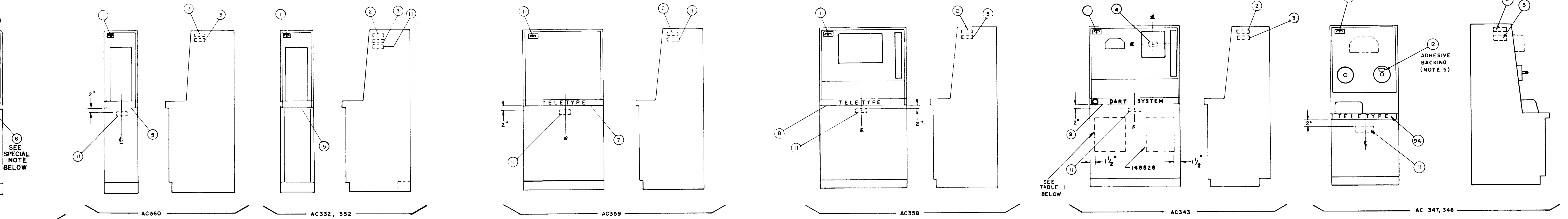
1.02 The location of each wiring diagram is indicated by its position in the index. The index also lists the subject matter of each wiring diagram, and its current issue.

1.03 For wiring information concerning the mechanical units associated with the converter terminals, refer to the appropriate section.

2. DIAGRAM INDEX

SUBJECT	DRAWING NUMBER	ISSUE					
		1	2	3	4	5	6
Marking Chart	4488		7				
Electrical Service Panel, TP194623	5969		2				
Tape-to-Tape Panel Assembly VCL283, VCL316	6022		4				
Service Unit, TP194605	6024		5				
Character Storage Module, TP194650	6028		4				
Transfer Tree Module, TP194651	6030		3				
Control Module, TP194653	6032		4				
Matrix Assembly, TP194652	6034		3				
Cabinet Wiring List 8- to 5-level	6035		9				
Automatic Feed-Out Assembly, TP194595	6036		3				
Feed-Out Assembly, TP194608	6038		2				
Signal to Tape Panel Assembly, VCL282 and VCL317	6084		3				
Cable Assembly, TP194683	6096	2	4				

4488 WD		
ISSUE	DATE	AUTH. NO.
2	11-6-64	DCAG538
3	7-1-64	77236
4	3-9-64	80134
5	8-24-64	83398
6	12-9-64	84603
7	3-10-65	185274



UNIT	DECAL
VSL 271	148834
VSL 284	148825
VSL 285	148833

MARKINGS CHART FOR DATA SPEED CABINETS

APPROVALS
 D AND R E OF M
 [Signature] [Signature]

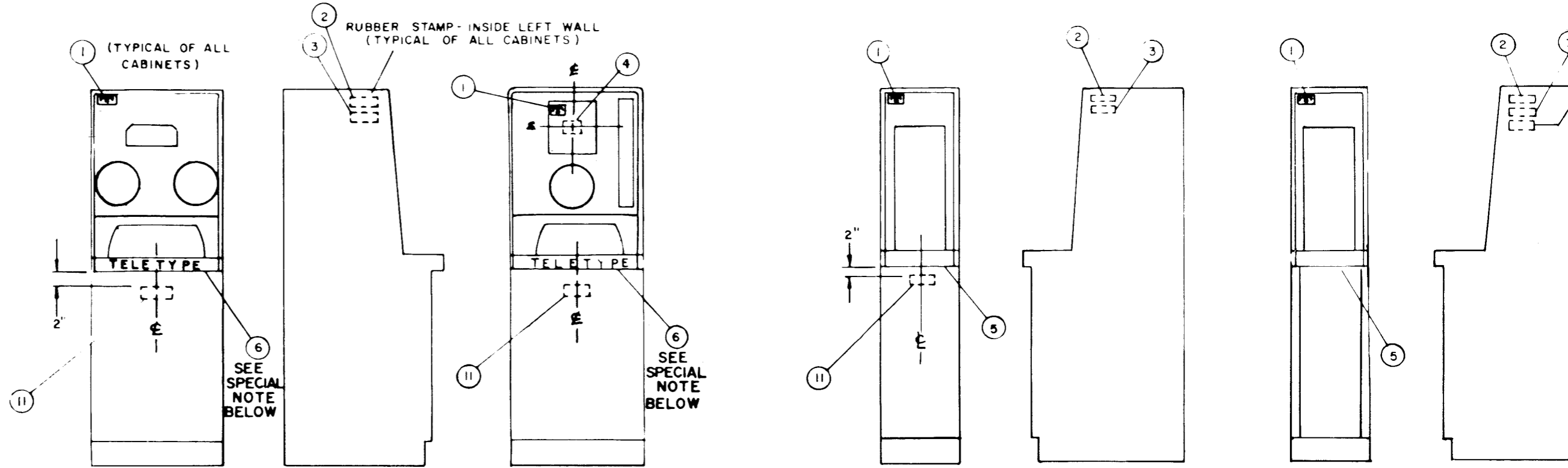
E-NUMBER
 PROD. NO. 4488 WD

DATE 2-21-64
 P.D. FILE NO. 86-1AA118
 DRAWN R.P. CHKD.
 ENGD. C.D.S. APPD.

TELETYPE CORPORATION
 4488 WD

NOTES:

REFER TO 600IWD FOR ALL NOTES



AC296, 335, 337
342, 349, 317
353, 364, 366
387, 382.

AC297, 334, 336
319, 350, 355

AC360

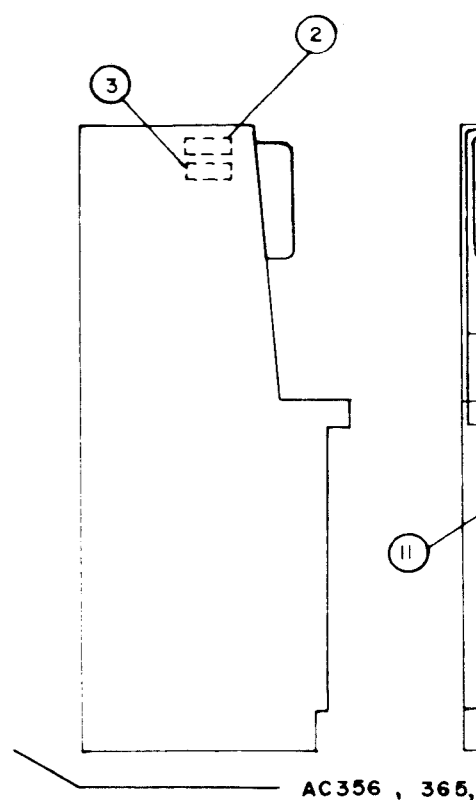
AC332, 352

SPECIAL NOTE

IN POS. (6) FOR AC 349 & 350 WITH "BA" MARKINGS USE 311288 (BELL SYSTEM PLATE). FOR OTHER MARKINGS SEE CHART BELOW.

FOR SALES ORDERS

CUSTOMER	POS. (1)	POS. (2)	POS. (3)	POS. (4)	POS. (5)	POS. (6)	POS. (7)	POS. (8)	POS. (9)	POS. (9A)	POS. (10)	POS. (11)	POS. (12)
	TELETYPE EMBLEM	TELETYPE CODE	TELETYPE SERIAL NO.	DECAL (LUB. INSTR)	TELETYPE OR CUSTOMER PLATES (NOS IN PARENTHESIS INDICATE QUANTITY OF 153103 SCREWS REQUIRED)					NAME PLATE	TELETYPE (TRADE-MARK)	INSTRUCTION PLATE (CHAD. BOX.)	
					8" LG.	15" LG.	19 1/2" LG.	23" LG.	26" LG.	15" LG.	24" LG.		
TELETYPE					193348 (4)	175060 (6)		198880 (6)			199266		
BELL SYSTEM						311288 (6)	149899 (6)			194729			
BELL (DART SYSM.)									198641 (6)				
BELL (DATA SPEED)						145908							
	305056 ADHESIVE BACK NOTE 5 & 10	RUBBER STAMP NOTE 7	RUBBER STAMP NOTE 7	145872 ADHESIVE BACK NOTE 5	NO INSCRIPTION ON THIS PLATE						NO MTG. SCR. REQ'D. (ADHESIVE BACK)	195213 ADHESIVE BACK NOTE 5	194535 PRESSURE SENSITIVE ADHESIVE BACK

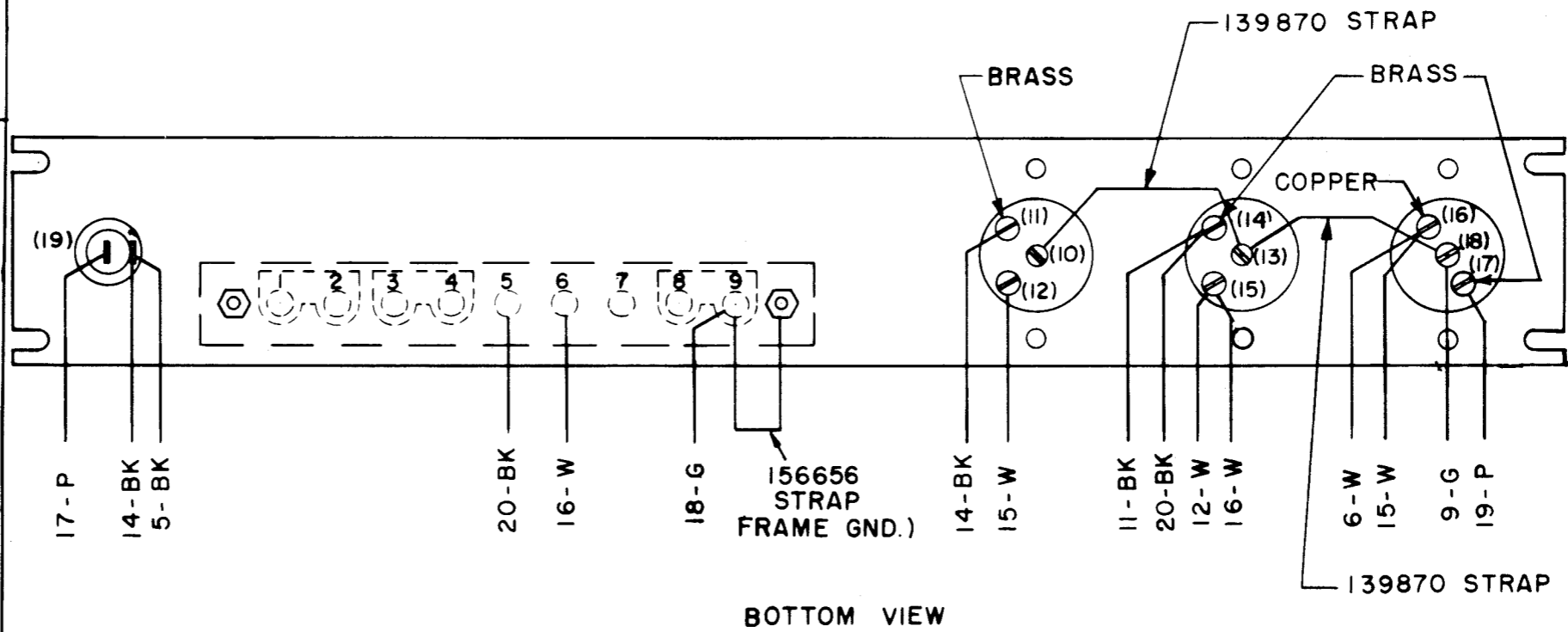


AC356, 365,

5989WD

ISSUE	DATE	AUTH NO.
2	9-11-64	83062

- NOTES:
- ASSOCIATED CABLE 194640 CABLE ASSEMBLY.
 - ALL WIRE 18 GA.
 - NUMBERS IN () NOT MARKED ON COMPONENTS.
 - WIRE COLOR CODE:
P - PURPLE
BK - BLACK
W - WHITE
G - GREEN
 - WIRING LEGEND:



BOTTOM VIEW

ACTUAL WIRING DIAGRAM FOR 194623 ELECTRICAL SERVICE PANEL

APPROVALS

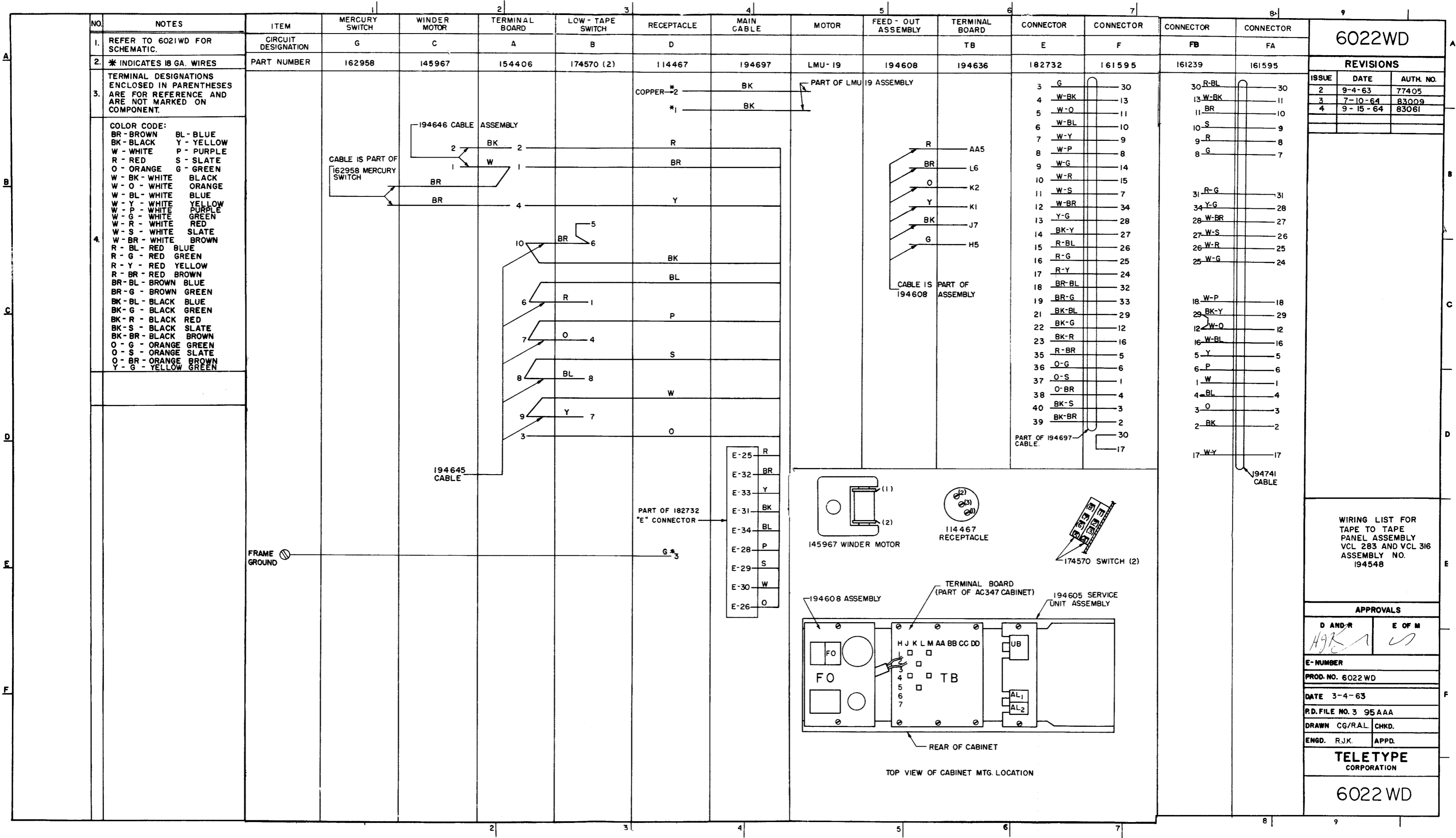
D AND R	E OF M
---------	--------

E-NUMBER
PROD NO 5969WD

DATE: 1-14-63
P.D. FILE NO 3-95AAA

DRAWN *P.A.* CHKD *[Signature]*
ENGD *P.H.B.* APPD *[Signature]*

TELETYPE CORPORATION
5969WD



6024WD

REVISIONS

ISSUE	DATE	AUTH. NO.
2	8-13-63	77403
3	9-5-63	77874
4	6-9-64	82051
5	7-10-64	82990

WIRING LIST 194605 SERVICE UNIT ASSEMBLY

APPROVALS

D AND R	E OF M
---------	--------

E-NUMBER

PROD. NO. 6024WD

DATE 1-16-63

P.D. FILE NO. 3-95AAA

DRAWN C. A.

CHKD. J. G. M.

ENGD. P. H. B.

APPD. B. G. G.

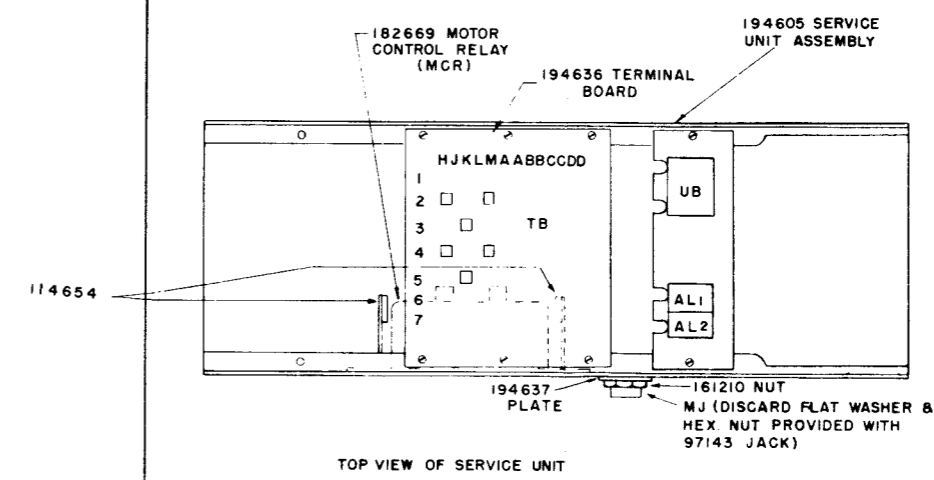
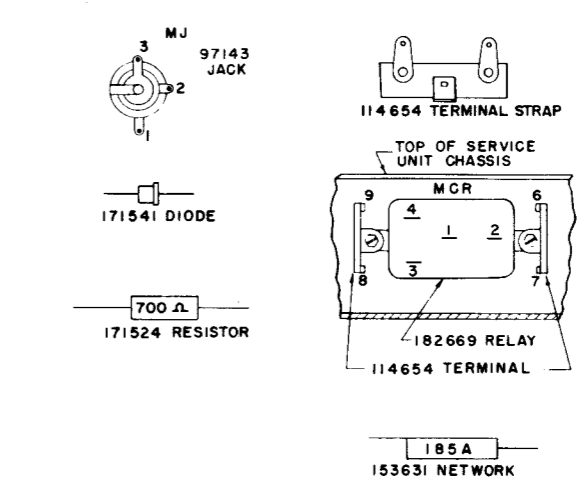
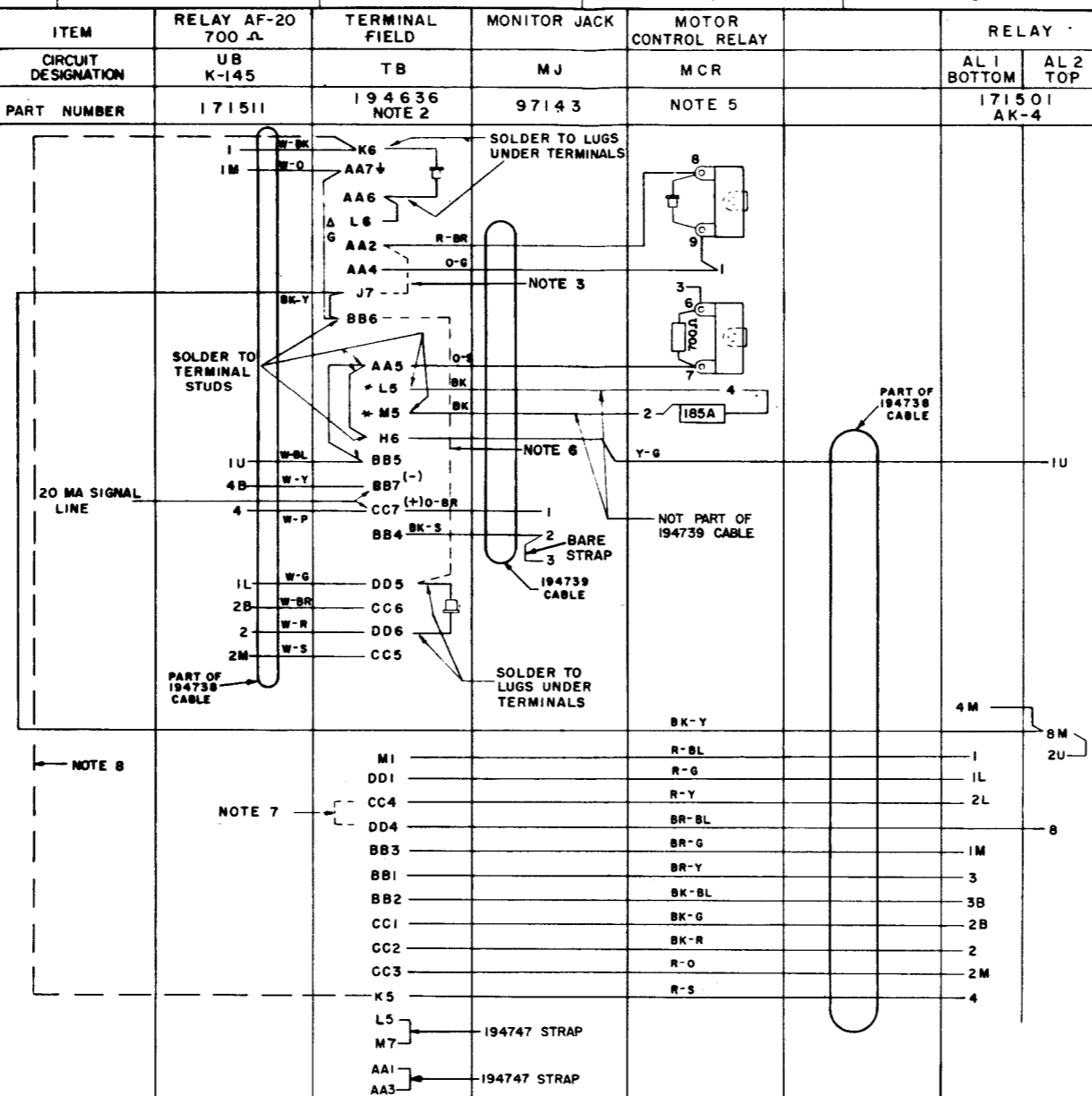
TELETYPE CORPORATION

6024WD

NO.	NOTES
1	REFER TO 6023WD FOR SCHEMATIC.
2	ALL WIRES CONNECTED TO TOP OF TERMINAL BOARD TO BE ASSEMBLED TO 192007 TERMINALS.
3	ADD STRAP ACROSS TB-AA2 AND TB-J7 TO RUN MOTORS CONTINUOUSLY.
4	* INDICATES 18 GA. WIRE.
5	MCR CONSISTS OF (1) MOTOR CONTROL RELAY 182669, AND (2) 114654 TERMINAL STRIPS.
6	ADD STRAP ACROSS TB-BB6 AND TB-DD5 TO DISABLE THE BLINDING CIRCUIT.
7	ADD STRAP ACROSS TB-CC4 AND TB-DD4 TO BYPASS TAPE-OUT LEADS WHEN CIRCUIT IS USED AS PART OF A SIGNAL-TO-TAPE CODE CONVERTER.
8	STRAP TB-K5 TO TB-K6 WHEN AUTOMATIC LETTERS FEED-OUT IS DESIRED FOR TAPE-TO-TAPE CONVERTERS. REMOVE CONNECTION TO CONTACT 1 UB AND THE TACK
9	Δ INDICATES 24 GA. WIRE
10	ALL OTHER WIRE 24 GA. GREEN RM 31784

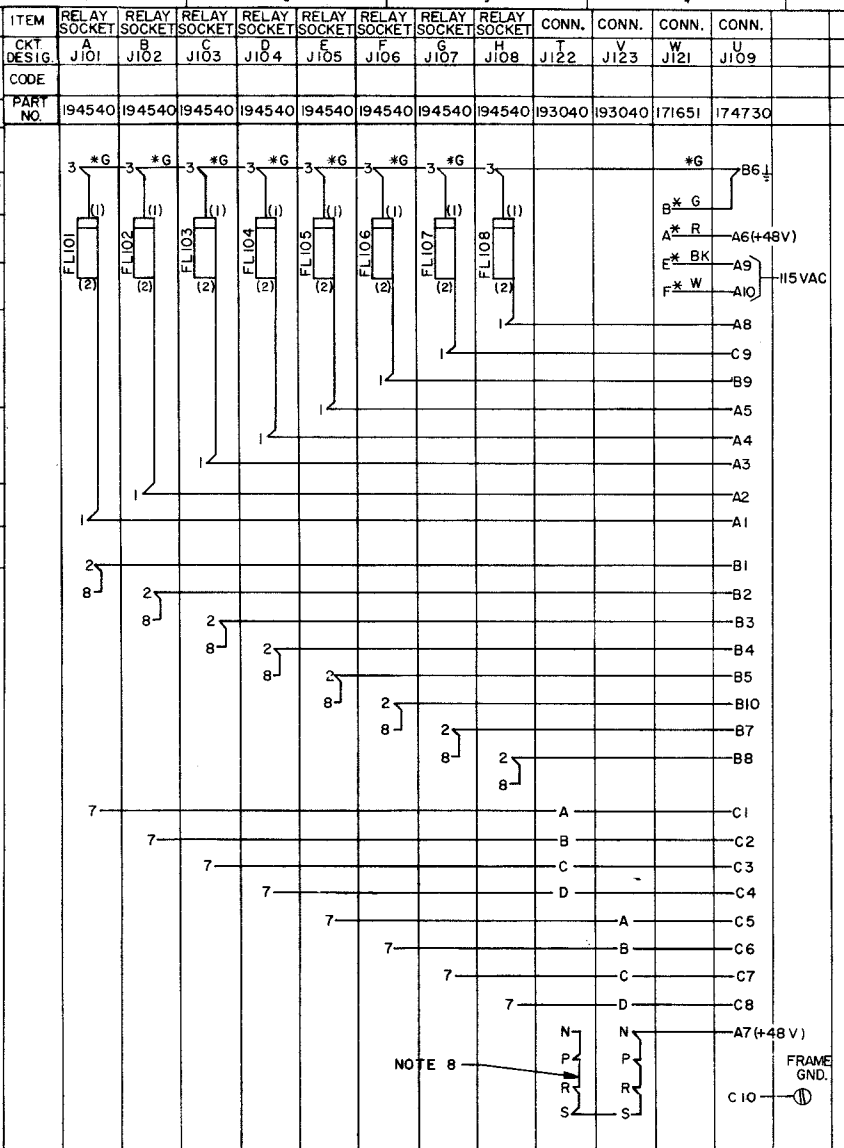
COLOR CODE:

W-BK	- WHITE BLACK
W-O	- WHITE ORANGE
BK-Y	- BLACK YELLOW
W-BL	- WHITE BLUE
W-Y	- WHITE YELLOW
W-P	- WHITE PURPLE
W-G	- WHITE GREEN
W-BR	- WHITE BROWN
W-R	- WHITE RED
W-S	- WHITE SLATE
G	- GREEN
R-BR	- RED BROWN
O-G	- ORANGE GREEN
O-S	- ORANGE SLATE
BK	- BLACK
O-BR	- ORANGE BROWN
BK-S	- BLACK SLATE
BK-Y	- BLACK YELLOW
R-BL	- RED BLUE
R-G	- RED GREEN
R-Y	- RED YELLOW
BR-BL	- BROWN BLUE
BR-G	- BROWN GREEN
BR-Y	- BROWN YELLOW
BK-BL	- BLACK BLUE
BK-G	- BLACK GREEN
BK-R	- BLACK RED
R-O	- RED ORANGE
R-S	- RED SLATE

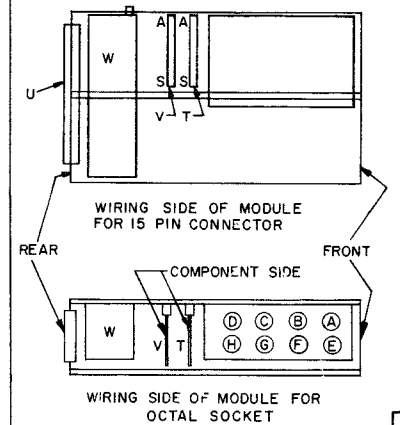
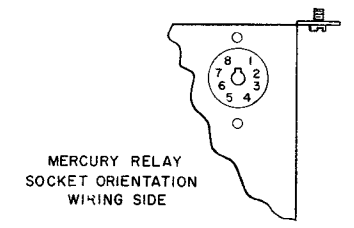


6028WD		
REVISIONS		
ISSUE	DATE	AUTH. NO.
2	8-12-63	77689
3	9-5-63	77874
4	8-5-64	83024

- NO. NOTES
- * INDICATES 18 GA. WIRE FOR 170573 RECTIFIER CABLE ASSEMBLY ONLY. ALL OTHER WIRE 24 GA. GREEN 31784RM
 - REFER TO 6027 WD FOR SCHEMATIC
 - RELAY H (K108) OMITTED IN THIS ASSEMBLY.
 - FL101 - FL108 ARE 185 A NETWORKS PART NO. 153631
 - ALL VOLTAGES DC UNLESS OTHERWISE SPECIFIED.
 - NUMBERS IN () ARE FOR REFERENCE ONLY.
 - WIRE COLOR CODE IDENTIFICATION
BK - BLACK
W - WHITE
R - RED
G - GREEN
 - ALL STRAPPING WIRE 24 AWG BARE, 39603RM. USE SLEEVING WHERE REQUIRED. DO NOT PULL TAUT BETWEEN TERMINALS.
 - USE 194743 CARD ASSEMBLIES ON CONNECTORS T AND V.



NOTE 8



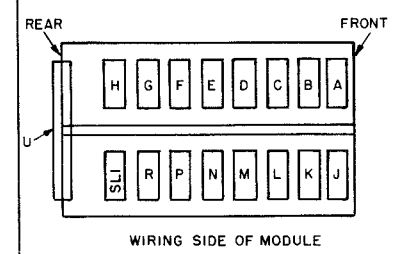
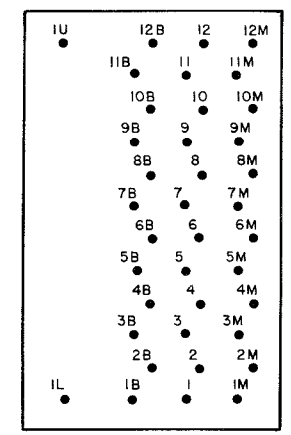
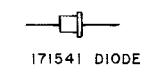
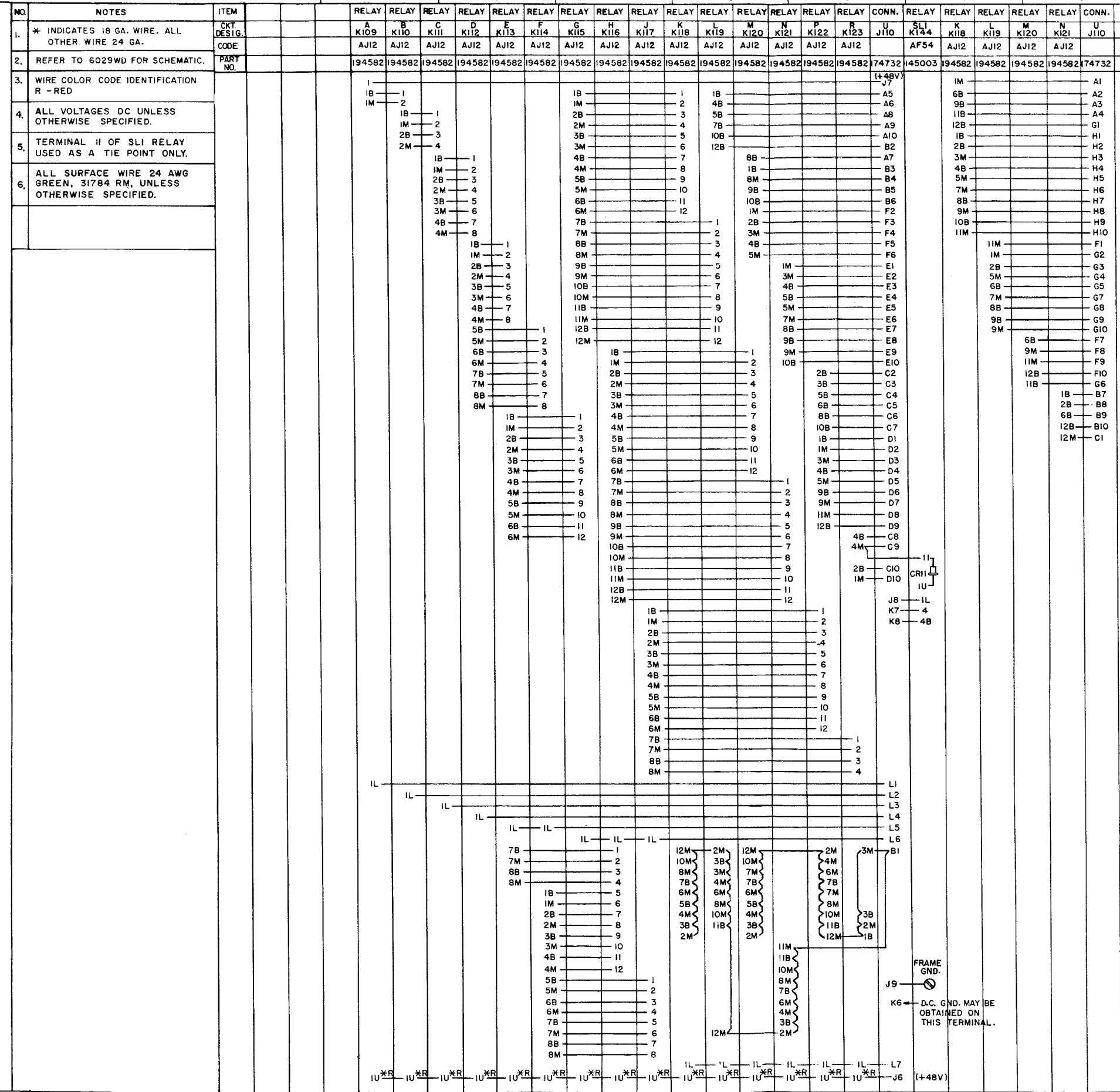
ACTUAL WIRING DIAGRAM FOR 8 TO 5 LEVEL CODE CONVERTER WIRING LIST FOR 194650 CHARACTER STORAGE MODULE

APPROVALS	
D AND R	E OF M
E-NUMBER	
PROD. NO. 6028 WD	
DATE 7-31-63	
P.D. FILE NO. 3-95AAA	
DRAWN J.K.K.	CHKD.
ENGR. R.J.K.	APPD.
TELETYPE CORPORATION	

6028 WD

6030WD

REVISIONS		
ISSUE	DATE	AUTH. NO.
2	8-12-63	77689
3	8-6-64	83026



ACTUAL WIRING DIAGRAM
8 TO 5 LEVEL
CODE CONVERTER
WIRING LIST FOR
194651 MODULE ASSEMBLY
(TRANSFER TREE)

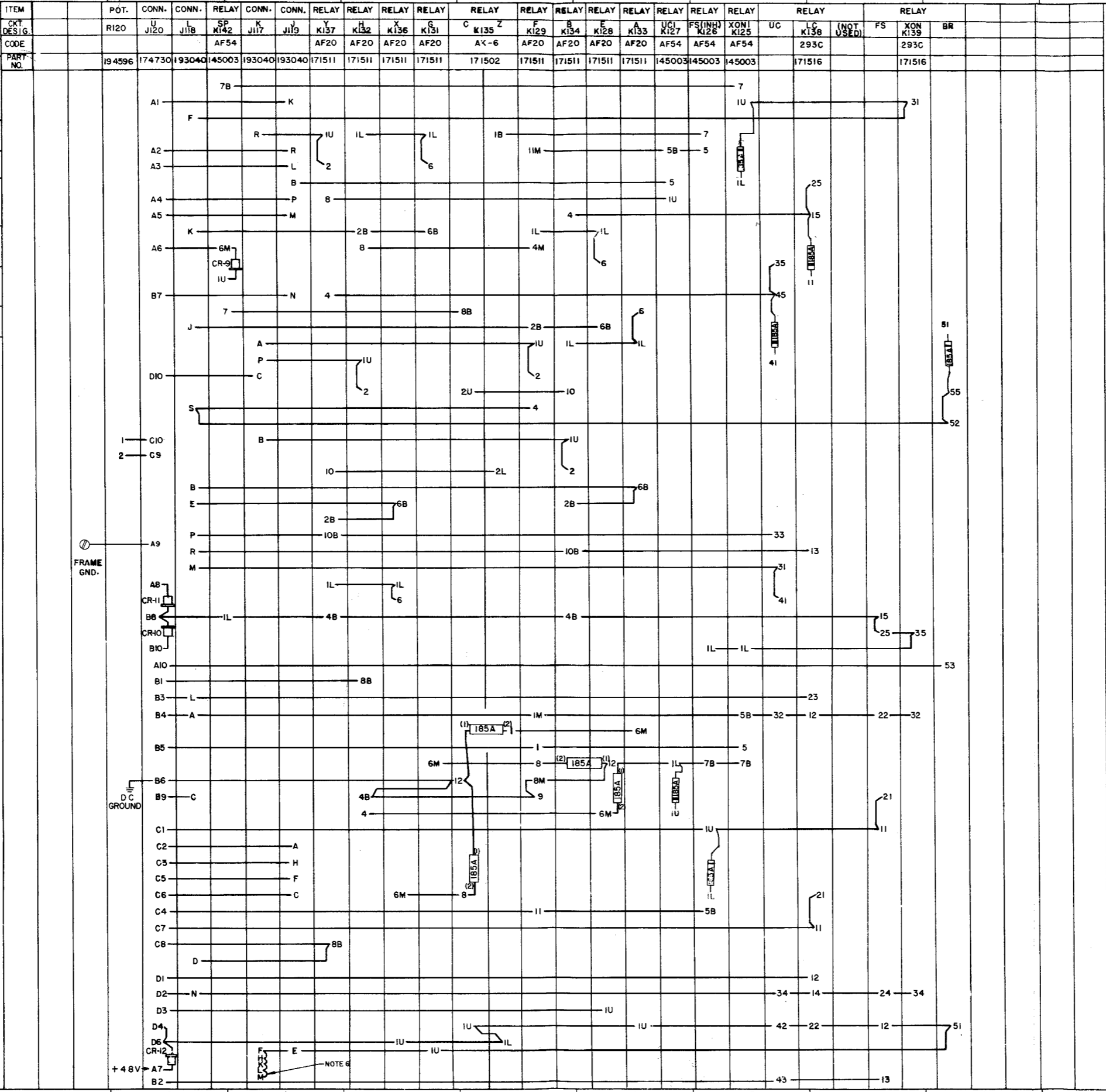
APPROVALS	
D AND R	E OF M
E-NUMBER	
PROD. NO. 6030WD	
DATE 8-2-63	
P.D. FILE NO. 3-95AAA	
DRAWN A.D.	CHKD.
ENGD. R.J.K.	APPD.

6030WD

6032 WD

REVISIONS		
ISSUE	DATE	AUTH. NO.
2	8-12-63	77689
3	8-7-64	83028
4	10-23-64	83877

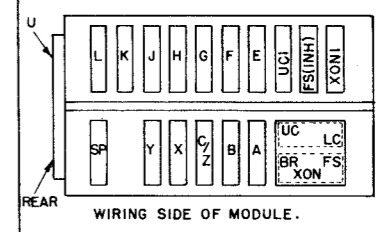
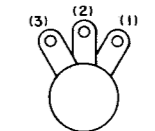
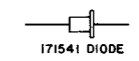
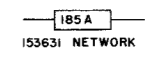
- NO. NOTES**
- REFER TO 6031 FOR SCHEMATIC.
 - ALL WIRE 24 GA. GREEN 31784 RM
 - CONNECTOR J ACCEPTS 194696 CARD ASSEMBLY.
CONNECTOR K ACCEPTS 194695 CARD ASSEMBLY.
CONNECTOR L ACCEPTS 194744 CARD ASSEMBLY.
 - NUMBERS IN PARENTHESES ARE FOR REFERENCE ONLY.
 - ALL VOLTAGES DC UNLESS OTHERWISE SPECIFIED.
 - ALL STRAPPING WIRE 24 AWG GREEN, 39603 RM. USE SLEEVING WHERE REQUIRED. DO NOT PULL TAUT BETWEEN TERMINALS.
 - INSERT ALL CARD ASSEMBLIES INTO CONNECTORS WITH COMPONENT SIDE TOWARD REAR OF MODULE.
 - TERMINALS 12 OF E AND C RELAYS AND 6M OF SP RELAY ARE USED AS TIE POINTS ONLY.



FRAME GND.

DC GROUND

NOTE 6



ACTUAL WIRING DIAGRAM
8 TO 5 LEVEL
CODE CONVERTER
WIRING LIST
FOR 194653
CONTROL MODULE

APPROVALS	
DJ AND R	E OF M
E-NUMBER	
PROD. NO. 6032 WD	
DATE 7-29-63	
P.D. FILE NO. 3-95AAA	
DRAWN A.D.	CHKD.
ENGR. R.J.K.	APPD.

TELETYPE CORPORATION

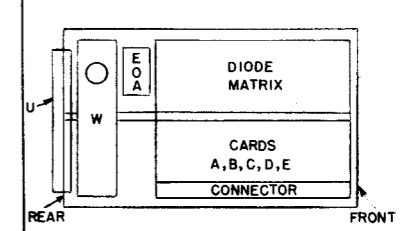
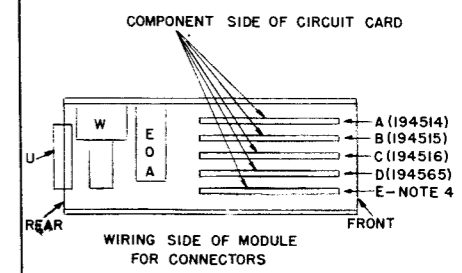
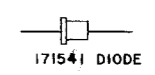
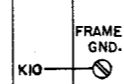
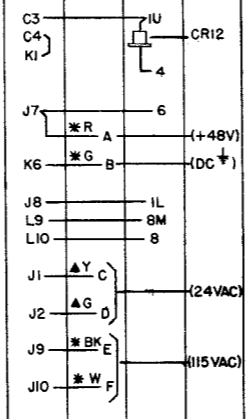
6032 WD

6034WD

REVISIONS		
ISSUE	DATE	AUTH. NO.
2	8-12-63	77689
3	8-14-64	83030

1. REFER TO 6033WD FOR SCHEMATIC.
2. * INDICATES 18 GA. WIRE FOR 170573 RECTIFIER ASSEMBLY CABLE ONLY.
3. SEE DRAWINGS 194514, 194515 - 194516, & 194565 FOR MATRIX CARD ASSEMBLIES.
4. CONNECTOR "E" IS FOR OPTIONAL CARD, 194635, WHICH IS NOT PROVIDED AS PART OF THIS ASSEMBLY.
5. ▲ INDICATES 24 GA. STRANDED WIRE. ALL OTHER WIRE 24 GA. GREEN 31784 RM
6. WIRE COLOR CODE IDENTIFICATION
 BK - BLACK
 W - WHITE
 R - RED
 G - GREEN
 Y - YELLOW
7. ALL VOLTAGES DC UNLESS OTHERWISE SPECIFIED.

NO.	CONNECTION	CONNECTION	CONNECTION	CONNECTION	CONNECTION	CONNECTION	CONNECTION	RELAY	
	U J111	A J112	B J113	C J114	D J115	E J116	U J111	W K143	
	174732	193033	193033	193033	193033	193033	174732	171651	145003
G4	5								
H8	6								
F8	8								
E5	10								
F2	12								
D7	14								
H5	15								
E1	17								
G10	18								
D5	20								
G2	22								
F9	24								
E9	25								
H3	26								
D2	F								
F6	CC								
D10	EE								
G6									
K2	20								
K3	24								
D3	5								
E6	6								
G7	8								
F4	10								
D8	12								
H6	14								
E2	15								
F1	17								
C9	18								
G9									
	25								
D6	26								
H10	F								
H2									
J6	CC								
C10	EE								
E8									
	22								
H9	5								
D9	6								
G3	8								
G1	10								
G8	12								
D4	14								
F5	15								
G5	17								
F10	18								
E10	20								
E7	22								
E4	24								
F3	25								
F7	26								
H4	F								
H7	CC								
E3	EE								
A1	8								
A2	5								
A3	F								
A4	6								
A5	10								
A6	12								
A7	14								
D1	15								
A8	17								
A9	18								
A10	20								
B2	22								
B1	25								
B3	CC								
B4	EE								
B5	26								
B6	24								
B7	22								
B8	25								
B9	CC								
B10	EE								
C1	26								
C2	24								
C5	F								
C6	6								
C7	10								
C8	12								
H1	8								
L1	16	16	16	16	16				
L2	3	3	3	3	3				
L3	C	C	C	C	C				
L4	2	2	2	2	2				
L5	A	A	A	A	A				
L6	FF	FF	FF	FF	FF				
L7	27	27	27	27	27				
L8	28	28	28	28	28				



ACTUAL WIRING DIAGRAM
 8 TO 5 LEVEL
 CODE CONVERTER
 WIRING LIST
 FOR 194652 MATRIX
 ASSEMBLY

APPROVALS
 D AND R E OF M

E-NUMBER
 PROD. NO. 6034WD
 DATE 8-1-63
 P.D. FILE NO. 3-95AAA
 DRAWN A.D. CHKD.
 ENGD. R.J.K. APPD.

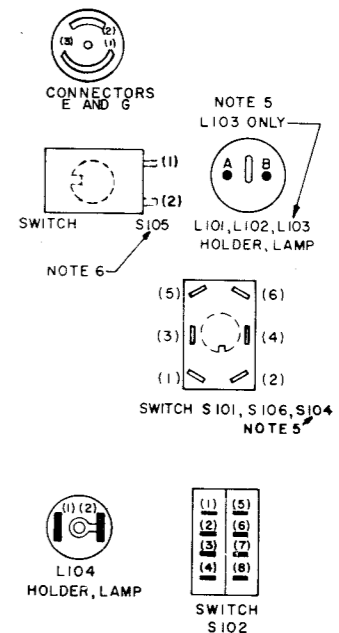
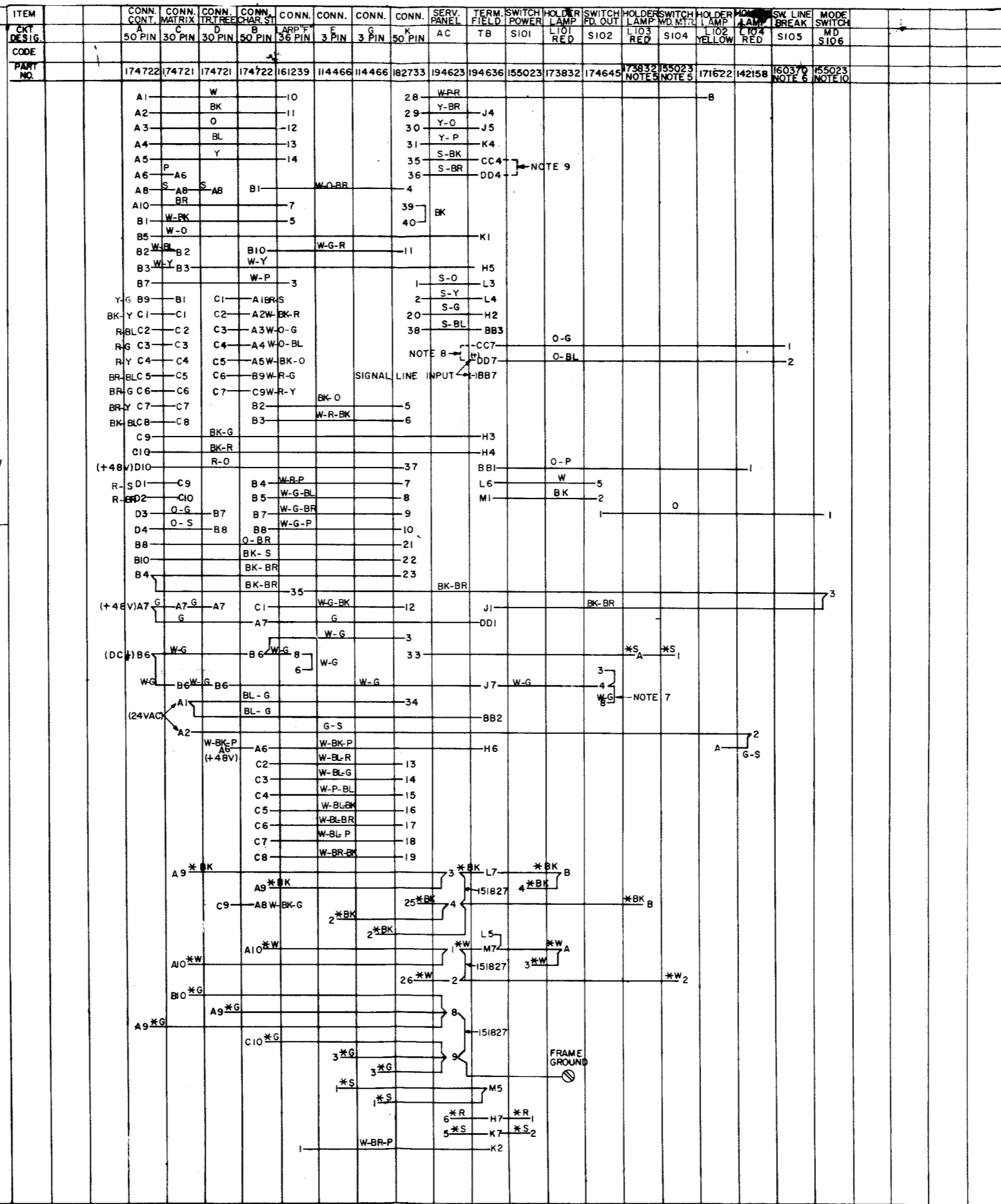
TELETYPE CORPORATION

6034WD

6035 WD		
REVISONS		
ISSUE	DATE	AUTH. NO.
1	6-26-63	76516
2	8-12-63	77689
3	9-5-63	77874
4	10-24-63	78176
5	12-12-63	77435
6	6-25-64	82698
7	9-1-64	83031
8	9-1-64	83056

NO.	NOTES
1.	* INDICATES 18 GA. WIRE. ALL OTHER WIRE 24 GA.
2.	REFER TO 6028 WD, 6030 WD, 6034 WD, AND 6032 WD FOR MODULE WIRING LIST.
3.	A CONTROL MODULE 194653 B CHARACTER STORAGE MODULE 194650 C DIODE MATRIX MODULE 194652 D TRANSFER TREE MODULE 194651
4.	FOR TERMINAL LOCATIONS ON CABINET SERVICE PANEL (AC) REFER TO 5969 WD
5.	ITEMS IDENTIFIED BY THIS NOTE ARE FUNCTIONAL ONLY ON THE TAPE-TO-TAPE CONVERTER
6.	ITEMS IDENTIFIED BY THIS NOTE ARE FUNCTIONAL ONLY ON THE SIGNAL-TO-TAPE CONVERTER
7.	ITEMS NOT IDENTIFIED BY NOTE 5 OR 6 ARE FUNCTIONAL ON BOTH THE TAPE-TO-TAPE AND SIGNAL TO TAPE CONVERTERS
8.	ADD STRAP ACROSS TB-CC7 AND TB-DD7 TO DISABLE LINE BREAK KEY
9.	ADD STRAP ACROSS TB-CC4 AND TB-DD4 TO BYPASS TAPE OUT LEADS WHEN CIRCUIT IS USED AS A PART OF A SIGNAL-TO-TAPE CODE CONVERTER
10.	TURN MODE SWITCH TO TAPE FOR TAPE-TO-TAPE OPERATION AND TO SIGNAL FOR SIGNAL-TO-TAPE OPERATION.
11.	REFER TO 6085 WD FOR SCHEMATIC
12.	194683 CABLE ASSEMBLY CONTAINS THE WIRING SHOWN ON THIS DRAWING.
13.	REFER TO 6098 WD FOR CABLE ROUTING.
14.	72596 RM TERMINALS ARE USED ON ALL WIRES IN AREA "AC"
15.	192007 TERMINALS ARE USED ON ALL WIRES IN AREA "TB."
16.	ALL VOLTAGES DC UNLESS OTHERWISE SPECIFIED.
17.	TERMINAL DESIGNATIONS ENCLOSED IN PARENTHESES ARE FOR REFERENCE AND ARE NOT MARKED ON COMPONENT.
18.	ALL STRAPPING WIRE 24 AWG BARE, 39603 RM. USE SLEEVING WHERE REQUIRED. DO NOT PULL TAUT BETWEEN TERMINALS.
19.	
20.	WIRE COLOR COLOR IDENTIFICATION BK-BLACK O-ORANGE W-WHITE BL-BLUE R-RED Y-YELLOW G-GREEN P-PURPLE S-SLATE BR-BROWN W-G-BL-WHITE GREEN BLUE W-G-BK-WHITE GREEN BLACK W-BL-P-WHITE BLUE PURPLE W-G-R-WHITE GREEN RED W-R-P-WHITE RED PURPLE W-BL-R-WHITE BLUE RED W-BL-G-WHITE BLUE GREEN W-P-BL-WHITE PURPLE BLUE W-BL-BK-WHITE BLUE BLACK W-BL-BR-WHITE BLUE BROWN W-BR-BK-WHITE BROWN BLACK W-G-BR-WHITE GREEN BROWN Y-O-YELLOW ORANGE Y-P-YELLOW PURPLE

ITEM	CONNECTION	TERMINAL	WIRE COLOR	TERMINAL	WIRE COLOR
CONNT. CONT.	A	50 PIN			
CONN. MATRIX	C	30 PIN			
CONN. TRIFREE	D	30 PIN			
CONN. CHAR. ST.	E	36 PIN			
CONN. LAMP	F	3 PIN			
CONN. LAMP	G	3 PIN			
CONN. LAMP	H	3 PIN			
CONN. LAMP	I	3 PIN			
CONN. LAMP	J	3 PIN			
CONN. LAMP	K	3 PIN			
CONN. LAMP	L	3 PIN			
CONN. LAMP	M	3 PIN			
CONN. LAMP	N	3 PIN			
CONN. LAMP	O	3 PIN			
CONN. LAMP	P	3 PIN			
CONN. LAMP	Q	3 PIN			
CONN. LAMP	R	3 PIN			
CONN. LAMP	S	3 PIN			
CONN. LAMP	T	3 PIN			
CONN. LAMP	U	3 PIN			
CONN. LAMP	V	3 PIN			
CONN. LAMP	W	3 PIN			
CONN. LAMP	X	3 PIN			
CONN. LAMP	Y	3 PIN			
CONN. LAMP	Z	3 PIN			



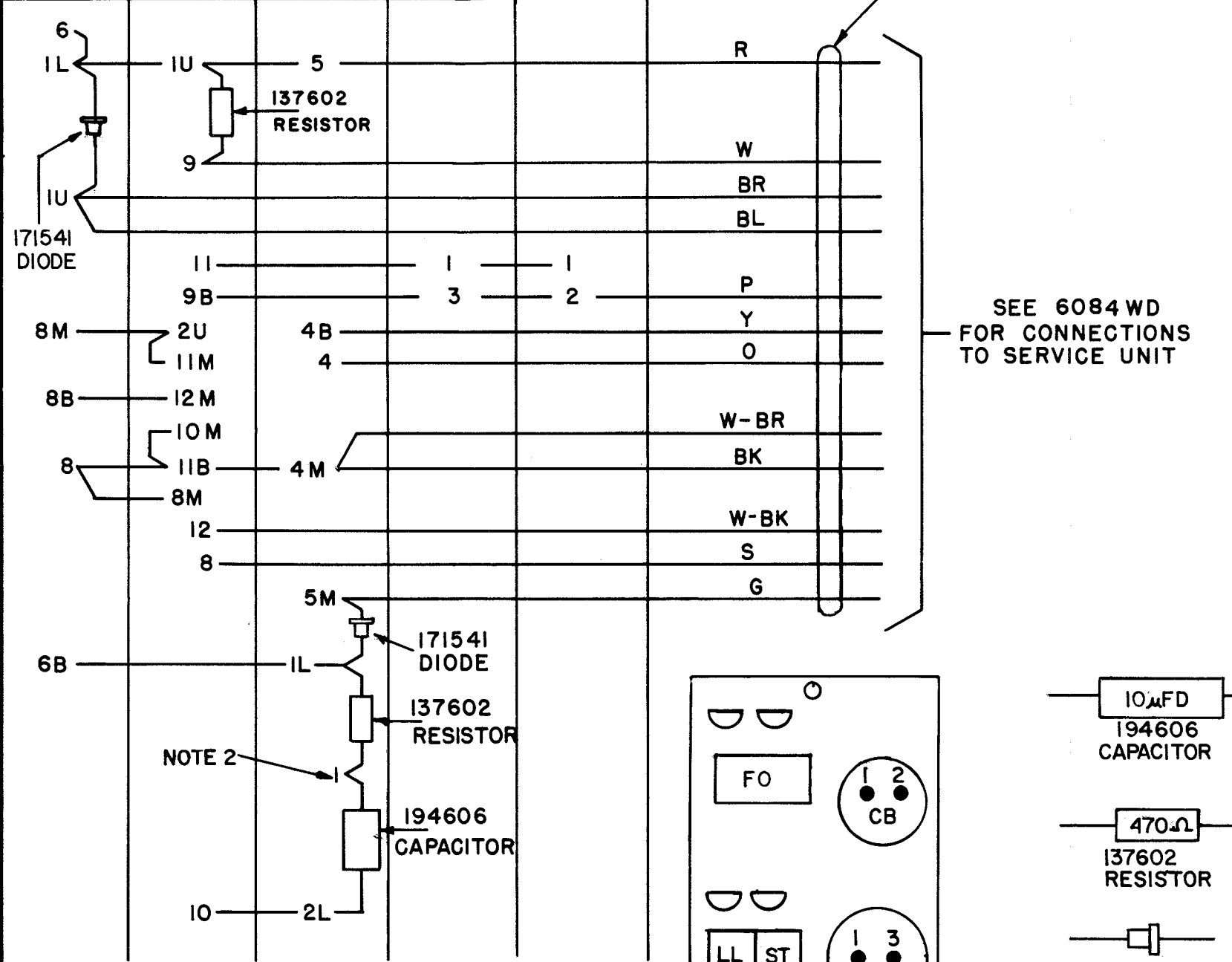
ACTUAL WIRING DIAGRAM FOR AC 347 B TO 5 LEVEL CODE CONVERTER	
APPROVALS	
DESIGNED BY	DATE
DRAWN BY	DATE
CHECKED BY	DATE
APPROVED BY	DATE
E-NUMBER	
PROD. NO. 6035 WD	
DATE 8-3-63	
P.D. FILE NO. 3-95AAA	
DRAWN J.V.K. CHD.	
ENGR. R.J.K. APPD.	
TELETYPE CORPORATION	
6035 WD	

6036WD

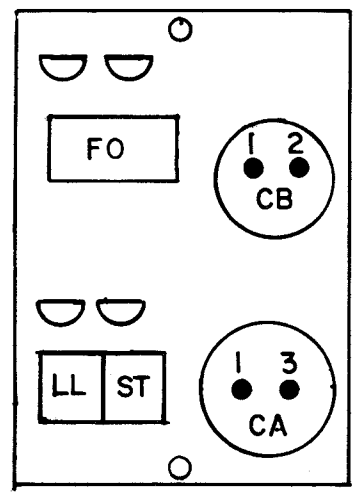
ISSUE	DATE	AUTH. NO.
2	8-10-64	83011
3	9-25-64	83011-1

- NOTE**
- 1 FOR SCHEMATIC REFER TO 5887WD
- 2 TERMINAL 1 ON LL RELAY USED AS TIE POINT.
- 3 **COLOR CODE IDENTIFICATION**
 R-RED
 W-WHITE
 BR-BROWN
 BL-BLUE
 P-PURPLE
 Y-YELLOW
 O-ORANGE
 BK-BLACK
 S-SLATE
 G-GREEN
 W-BR WHITE BROWN
 W-BK-WHITE BLACK
- 4 ALL CAPACITANCE VALUES IN MICROFARADS UNLESS OTHERWISE SPECIFIED.
- 5
- 6 ALL SURFACE WIRING 24 AWG GREEN, 31784 RM UNLESS OTHERWISE SPECIFIED.

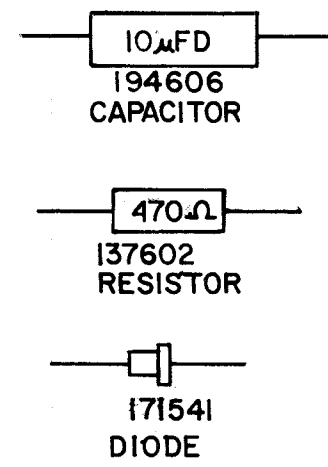
RELAY	RELAY		CAPACITOR		
	FO	ST	LL	CA	CB
165051	171501	171501	194600	194620	
AG-24	TOP	AK-4 BOTTOM	2000 MFD	900 MFD	



SEE 6084 WD FOR CONNECTIONS TO SERVICE UNIT



WIRING SIDE



WIRING LIST
 194595
 AUTOMATIC
 FEED-OUT
 ASSEMBLY

APPROVALS

D AND R	E OF M
<i>HAK</i>	<i>[Signature]</i>

E-NUMBER
 PROD. NO. 6036WD

DATE: 1-30-63
 P.D. FILE NO. 3-95AAA
 DRAWN. *C.A. CHKD. [Signature]*
 ENGD. *P.H.B. APPD. [Signature]*

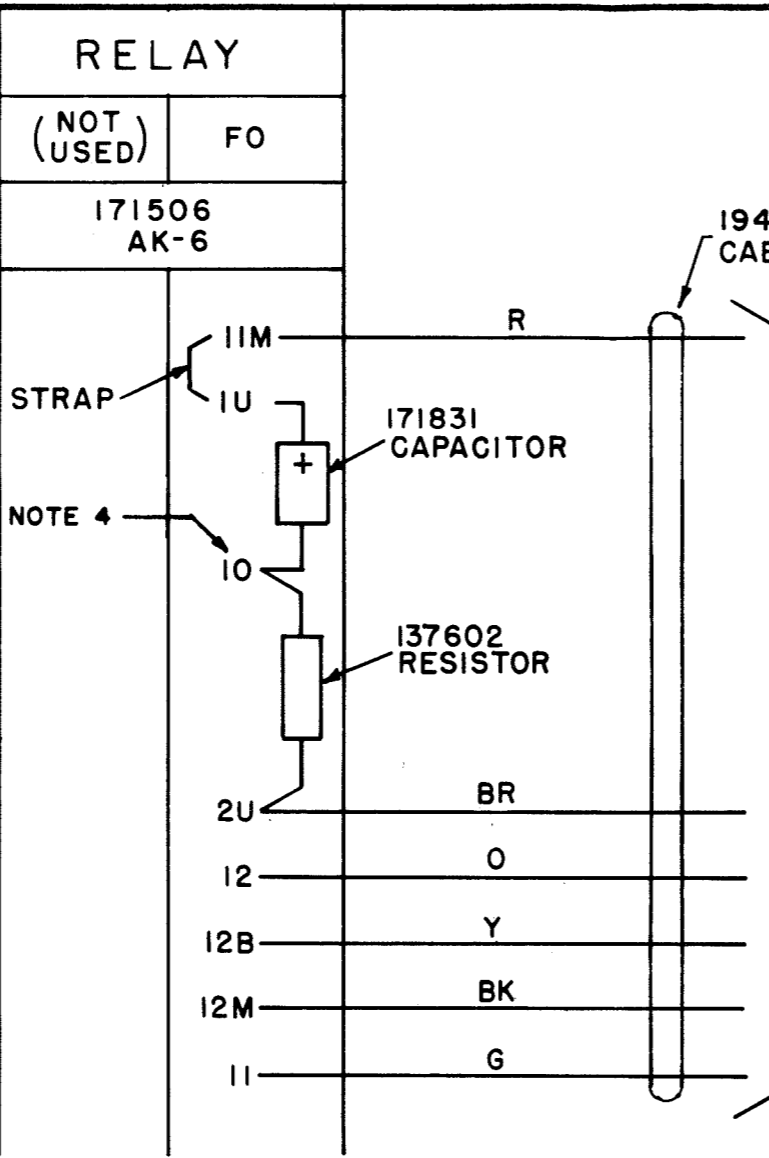
TELETYPE CORPORATION

6036WD

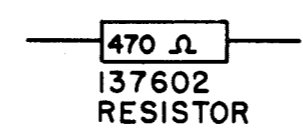
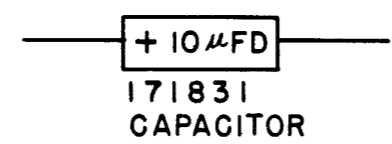
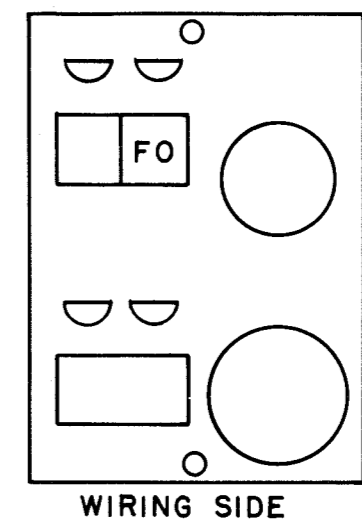
6038WD

ISSUE	DATE	AUTH. NO.
2	7-30-64	83012

- NO NOTES
- FOR SCHEMATIC REFER TO 6037 WD
 - ASSOCIATED CABLE 194641 CABLE ASSEMBLY
 - COLOR CODE IDENTIFICATION:
 R — RED
 BR — BROWN
 O — ORANGE
 Y — YELLOW
 BK — BLACK
 G — GREEN
 - TERMINAL 10 OF FO RELAY USED AS TIE POINT.



SEE 6021 WD FOR CONNECTIONS TO SERVICE UNIT



WIRING LIST
194608
FEED-OUT
ASSEMBLY

APPROVALS

D AND R	E OF M
<i>PHB</i>	<i>[Signature]</i>

E-NUMBER
PROD. NO. 6038 WD

DATE: 1-30-63
P.D. FILE NO 3-95AAA

DRAWN. *CA* CHKD. *[Signature]*
 ENGD. *PHB* APPD. *[Signature]*

TELETYPE CORPORATION
6038WD

6084 WD

REVISIONS

ISSUE	DATE	AUTH. NO.
# 2	8-30-63	77410
3	7-31-64	82985

WIRING LIST FOR SIGNAL TO
TAPE PANEL ASSEMBLY
VCL 282
AND
VCL 317
ASSEMBLY NO. 194706

APPROVALS

D AND R	E OF M
---------	--------

E-NUMBER	
PROD. NO.	6084 WD
DATE	3-9-63
P.D. FILE NO.	3-95.AA
DRAWN C6	CHKD.
ENGD. PHB	APPD.

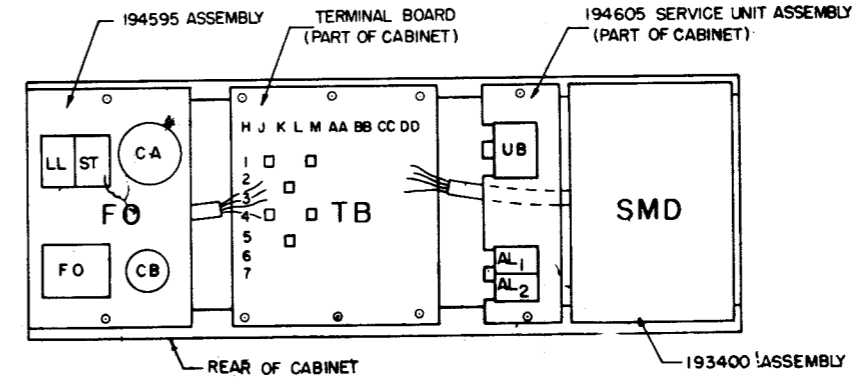
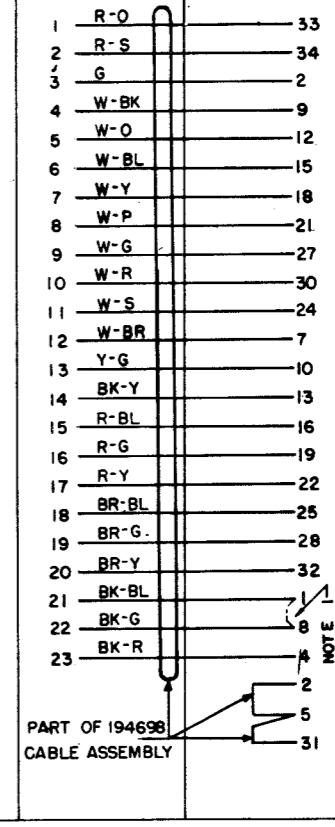
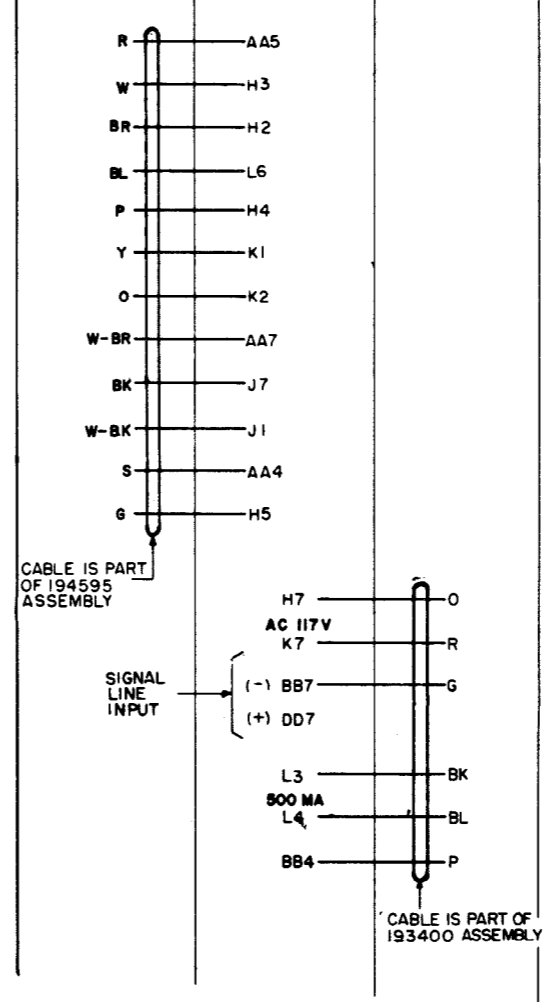
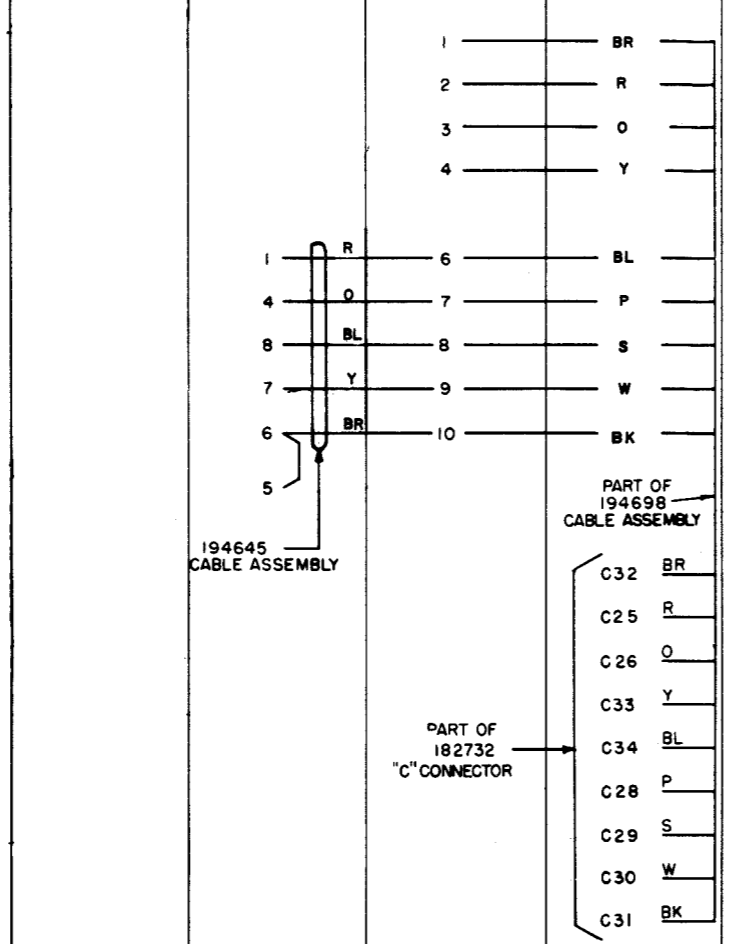
TELETYPE CORPORATION

6084 WD

NO.	NOTES	ITEM	LOW TAPE CONTACTS	TERMINAL BLOCK	CABLE	FEED-OUT ASSEMBLY	TERMINAL BOARD	SELECTOR MAGNET DRIVER	CONNECTOR	CONNECTOR
		CIRCUIT DESIGNATION	B	A		FO	TB	SMD	C	D
1.	THIS STRAP IS NOT PART OF THE 194698 CABLE ASSEMBLY BUT MUST BE ADDED WHEN THE CABLE IS USED AS PART OF THE VCL 317 ASSEMBLY	PART NUMBER	174570	154406	194698	194595	194636	193400	182732	161239

2. REFER TO 6084WD FOR SCHEMATIC.
3. ALL VOLTAGES DC UNLESS OTHERWISE SPECIFIED.
4. WIRE COLOR CODE IDENTIFICATION:
- | | |
|------------|------------|
| BR - BROWN | P - PURPLE |
| R - RED | S - SLATE |
| O - ORANGE | W - WHITE |
| Y - YELLOW | BK - BLACK |
| BL - BLUE | G - GREEN |
-
- | | |
|-------|----------------|
| W-BR | WHITE & BROWN |
| W-BK | WHITE & BLACK |
| R-O | RED & ORANGE |
| R-S | RED & SLATE |
| W-O | WHITE & ORANGE |
| W-BL | WHITE & BLUE |
| W-Y | WHITE & YELLOW |
| W-P | WHITE & PURPLE |
| W-G | WHITE & GREEN |
| W-R | WHITE & RED |
| W-S | WHITE & SLATE |
| Y-G | YELLOW & GREEN |
| BK-Y | BLACK & YELLOW |
| R-BL | RED & BLUE |
| R-G | RED & GREEN |
| R-Y | RED & YELLOW |
| BR-BL | BROWN & BLUE |
| BR-G | BROWN & GREEN |
| BR-Y | BROWN & YELLOW |
| BK-BL | BLACK & BLUE |
| BK-G | BLACK & GREEN |
| BK-R | BLACK & RED |

5. NUMBERS IN () ARE FOR REFERENCE ONLY.



TOP VIEW OF CABINET MTG. LOCATION

6096 WD

ISSUE	DATE	AUTH. NO.
2	5-7-63	76473
3	9-7-63	77399
4	8-14-64	83033

NO. NOTES

1 * INDICATES 18 GA. WIRE. ALL OTHER 24 GA.

2 REFER TO 6098 WD FOR CABLE ROUTING.

3 COLOR CODE IDENTIFICATION:
 G-GREEN R-RED
 BK-BLACK S-SLATE
 W-WHITE
 W-O-WHITE ORANGE
 W-Y-WHITE YELLOW
 W-G-WHITE GREEN
 BK-G-BLACK GREEN
 BK-R-BLACK RED
 BL-G-BLUE GREEN
 Y-BR-YELLOW BROWN
 Y-O-YELLOW ORANGE
 Y-P-YELLOW PURPLE
 S-BK-SLATE BLACK
 S-BR-SLATE BROWN
 S-O-SLATE ORANGE
 S-Y-SLATE YELLOW
 S-G-SLATE GREEN
 S-BL-SLATE BLUE
 O-G-ORANGE GREEN
 O-BL-ORANGE BLUE
 O-P-ORANGE PURPLE
 BK-BR-BLACK BROWN
 W-BK-P-WHITE BLACK PURPLE
 W-BR-P-WHITE BROWN PURPLE

4

TERMINAL FIELD

TB
194636

DD1	_____	G
K1	_____	W-O
H5	_____	W-Y
J7	_____	W-G (2)
H3	_____	BK-G
H4	_____	BK-R
L7	_____	BK*(2)
M7	_____	W*(2)
BB2	_____	BL-G
H6	_____	W-BK-P
K2	_____	W-BR-P
M5	_____	S*(2)
J4	_____	Y-BR
J5	_____	Y-O
K4	_____	Y-P
CC4	_____	S-BK
DD4	_____	S-BR
L3	_____	S-O
L4	_____	S-Y
H2	_____	S-G
BB3	_____	S-BL
H7	_____	R*(2)
K7	_____	S*(2)
CC7	_____	O-G
DD7	_____	O-BL
BB1	_____	O-P
L6	_____	W
M1	_____	BK
J1	_____	BK-BR

PART OF 194683 CABLE

SERVICE PANEL

AC
194623

8	_____	G*(3)
4	_____	BK*(4)
2	_____	W*(2)
9	_____	G*(3)
3	_____	BK*(3)
1	_____	W*(3)
6	_____	R*
5	_____	S*

PART OF 194683 CABLE

WIRING LIST FOR CONNECTIONS FROM 194683 CABLE ASSEMBLY TO THE TERMINAL FIELD AND SERVICE PANEL

AC 347

APPROVALS
D AND R E OF M

E-NUMBER

PROD. NO. 6096 WD

DATE: 3-6-63

P.D. FILE NO. 3-95 AAA

DRAWN. RGK CHKD.

ENGD. RJK APPD.

TELETYPE CORPORATION

6096 WD