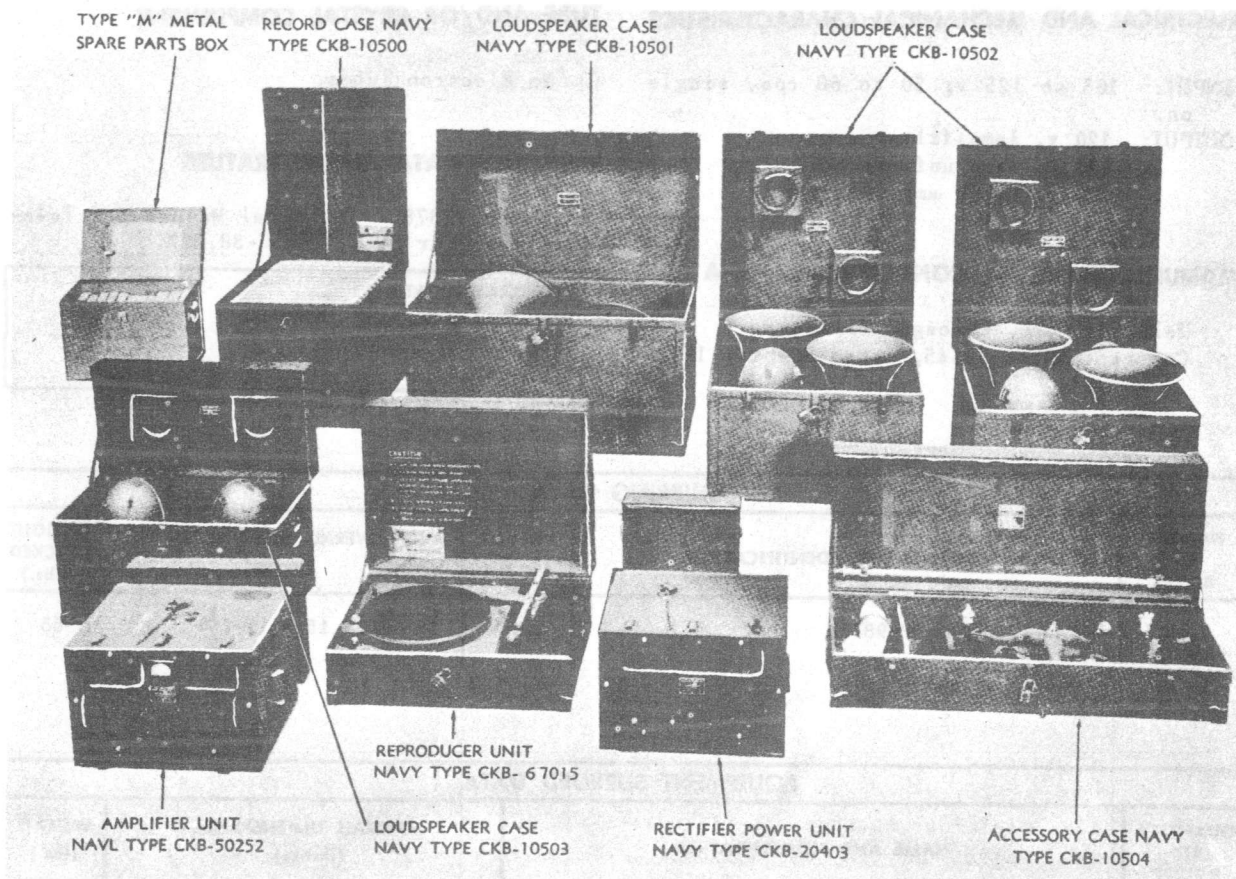


March 1957

PORTABLE SOUND REPRODUCING EQUIPMENT

PR



Model PR Portable Sound Reproducing Equipment, Components

FUNCTIONAL DESCRIPTION

The PR is designed for use in connection with activities at Naval and Marine Corps Shore Stations and provides a loudspeaker system for voice, electrical transcriptions, and radio programs.

No field changes in effect at time of preparation (17 August 1956).

OUTPUT IMPEDANCE: 2.5, 4, 8, 15, 30 and 50 ohms.

INPUT IMPEDANCE

MICROPHONE 1, 2, 3: 50/230/500 ohm.

RADIO: 600 ohm.

MISCELLANEOUS: 5000/500,000 ohms.

OPERATING POWER: 115 v, 50 to 60 cps.

MANUFACTURER'S OR CONTRACTOR'S DATA

Hoffman Radio Corporation, Los Angeles, Calif.

Contract NXsr-83353, dated 14 December 1944.

TUBE AND/OR CRYSTAL COMPLEMENT

(6) 6J7	(1) 6SL7GT	(2) 6V6
(4) 6L6	(3) 5U4G	

Total Tubes: (16)

RELATION TO OTHER EQUIPMENT

Equipment Required but not Supplied: (1) Radio Receiving Equipment (optional) RBO or similar, (1) Power Input Cable, Speaker Cable.

ELECTRICAL AND MECHANICAL CHARACTERISTICS

FREQUENCY RANGE: 50 to 8000 cps.

AMPLIFIER OUTPUT: 60 W.

PR

PORTABLE SOUND REPRODUCING EQUIPMENT

March 1957

REFERENCE DATA AND LITERATURE

NAVSHIPS 900,741: Technical Manual for
Portable Sound Reproducing Equipment PR.

TYPE CLASSIFICATION
DESIGN COGNIZANCE BUSHIPS
PROCUREMENT COGNIZANCE
STOCK NO.

SHIPPING DATA

NUMBER OF BOXES	CONTENTS AND IDENTIFICATION	VOLUME (Cu.Ft.)	OVERALL DIMENSIONS (inches)	WEIGHT PACKED (lbs.)
1	Amplifier Unit NT-50252	9.45	22 X 27 X 27-1/2	168
1	Rectifier Power Unit-NT-20403 1 Plug-Input Power	9.45	22 X 27 X 27-1/2	183
1	Record Carrying Case NT-10500	14.5	27-1/2 X 28-3/4 X 21-1/4	202
1	Reproducer Unit-NF67015	10.8	18 X 30 X 34-1/2	155
1	Speaker Carrying Case NT-10501 containing: 2 Reflex Trumpet Type Loudspeakers NT-491030 2 Speaker Mounting Brackets	21.5	28 X 30 X 44-1/2	259
2	Speaker Carrying Case-NT-10502 containing: Loudspeakers-NT-49971	16.2	26 X 32-3/4 X 33-1/4	208
1	Speaker Carrying Case NT-10503 containing Loudspeakers-NT-49971	12.0	22 X 26 X 36-1/2	151
1	Accessories Carrying Case NT-10504 containing: Microphones-NT-51096 Microphone Stand (floor type) NT-10516 Microphone Stand (Desk Type) NT-10515 Set Cables with plugs	10.4	16-1/2 X 22-3/4 X 49-1/4	160
1	Spare Parts	3.2	15-1/2 X 17 X 21-1/2	97

EQUIPMENT SUPPLIED DATA

QUANTITY PER EQUIPT	NAME AND NOMENCLATURE	OVERALL DIMENSIONS (inches)	WEIGHT (lbs.)
1	Amplifier Unit-NT-50252 and 2 Technical Manuals	14-3/4 X 19-1/8 X 21-3/4	91
1	Rectifier Power Unit-NT-20403 1 Plug-Input Power (attached to Input Receptacle)	14-3/4 X 19-1/8 X 21-3/4	106
1	Record Carrying Case NT-10500	21-1/2 X 22 X 25-3/4	99
1	Reproducer Unit NT-67015 Including:	10-7/8 X 23 X 30	70

March 1957

PORTABLE SOUND REPRODUCING EQUIPMENT

PR

EQUIPMENT SUPPLIED DATA

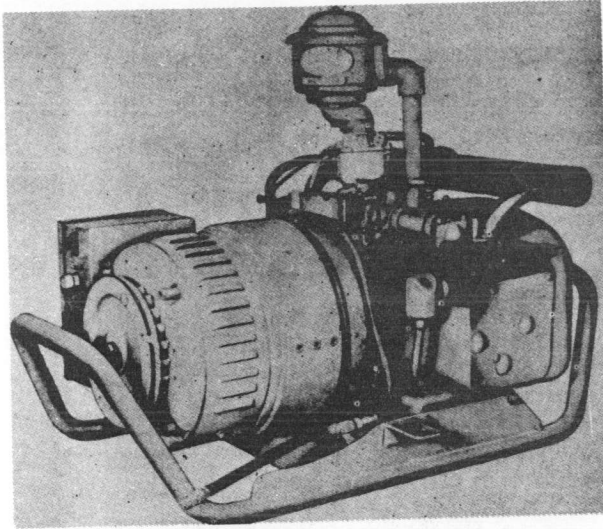
QUANTITY PER EQUIPT	NAME AND NOMENCLATURE	OVERALL DIMENSIONS (inches)	WEIGHT (lbs.)
1	1 Speed-Change Sleeve 1 Partial Set Operating Spare Parts: 1 Allen Wrench #8 1 Phonograph Needle 10 Fuses-5 amp- Speaker Carrying Case NT-10501 containing the following: 2 Reflex Trumpet Type Loudspeakers NT-491030 2 Speaker Mounting Brackets	21-3/8 X 22-1/8 X 39	123
2	Speaker Carrying Case-NT-10502 containing the following: 4 Eight-inch Permanent Magnet Type Loudspeakers-NT-49971 in Metal enclosures	19 X 238-3/4 X 28-3/4	96
1	Speaker Carrying Case NT-10503 containing the following: 2 Eight-inch permanent Magnet Type Loudspeaker NT-49971 in Metal enclosures	17-1/8 X 19 X 32	60
1	Accessory Carrying Case NT-10504 containing the following: 2 Microphones NT-51096 complete with plugs 1 Microphone Stand, floor type NT-10516 2 Microphone Stands, Desk type NT-10515 1 Cable, reproducer Power, with Plugs 1 Cable, radio Power, with Plugs 2 Cables, Microphone, with Plugs 1 Cable, reproducer Audio, with Plugs 1 Cable, Audio extension with Plugs 1 Cable, Amplifier Power with Plugs 1 Cable, Radio Audio, with Plugs	10-1/4 X 18 X 45-1/4	72
1	Partial Set Operating Spare Parts in Type "M" Metal Spare Parts Box	12 X 12-1/2 X 18-1/2	42

October 1957

Radio-Auxiliary

PU-1/CRN-2

POWER UNIT



Power Unit PU-1/CRN-2

RELATION TO OTHER EQUIPMENT

Equipment Required but not Supplied: (2)
Battery BB-57.

ELECTRICAL AND MECHANICAL CHARACTERISTICS

ENGINE

TYPE: 4-cycle.
TYPE CYLINDER HEAD: L.
NUMBER CYLINDER: 2.
BORE: 2-3/4 in.
SPEED: 1800 rpm.

TUBE AND/OR CRYSTAL COMPLEMENT

No Electron Tubes.

FUNCTIONAL DESCRIPTION

The PU-1/CRN-2 is designed to supply 115 v, single ph, AC and 12 v DC at 60 cycle per second. Rated capacity is 1500 va at unity factor and 250 w DC. A radio set can utilize the output of power unit PU-1/CRN-2 for operation of the radio's various switch and control.

No field changes in effect at time of preparation (14 March 1957).

REFERENCE DATA AND LITERATURE

AN16-35PU1-2: Technical Manual for Power Unit PU-1/CRN-2.

TYPE CLASSIFICATION
DESIGN COGNIZANCE USAF
PROCUREMENT COGNIZANCE
STOCK NO.

EQUIPMENT SUPPLIED DATA

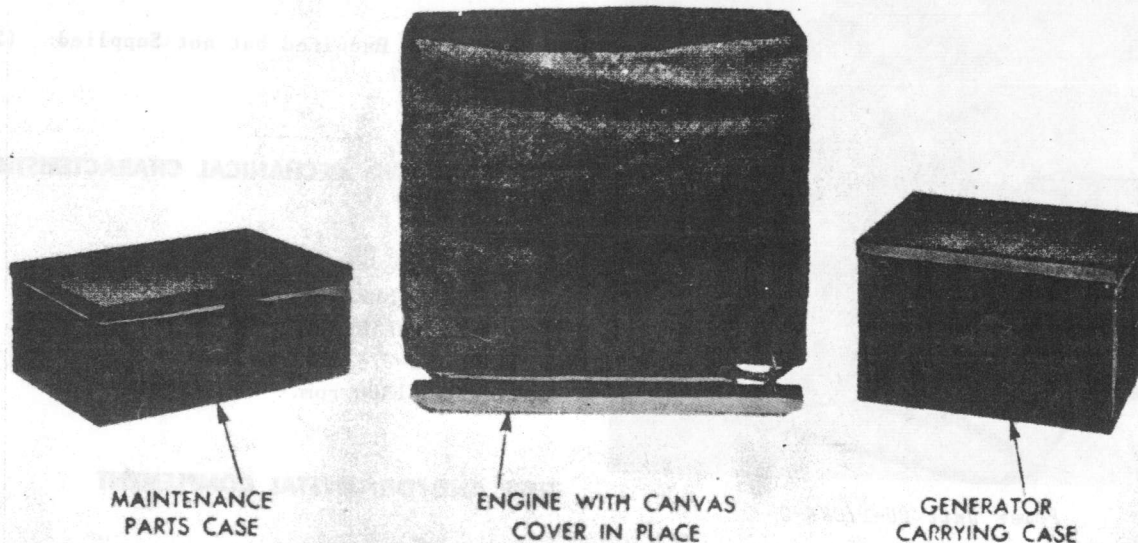
QUANTITY PER EQUIPT	NAME AND NOMENCLATURE	OVERALL DIMENSIONS (inches)	WEIGHT (lbs.)
1	Power Unit PU-1/CRN-2	16 x 21-3/4 x 32	226

October 1957

Radio-Auxiliary

PU-116/U

POWER UNIT



Power Unit PP-116/U:

FUNCTIONAL DESCRIPTION

The PU-116/U is a portable power plant which supplies primary power for electrical, communications, or radar equipments requiring up to a maximum of four kilowatts of power at 115 v, single ph, 60 cycle.

No field changes in effect at time of preparation (12 March 1957).

Contract NXss-30264.
Contract N5sr-11794.

TUBE AND/OR CRYSTAL COMPLEMENT

No Electron Tubes.

ELECTRICAL AND MECHANICAL CHARACTERISTICS

POWER OUTPUT: 4 kva, 85%.pf.
FREQUENCY STABILITY: 60 ± 2 cps.
VOLTAGE REGULATION: $\pm 5\%$ of nominal voltage which may be set at any point between 110 and 120 v.

REFERENCE DATA AND LITERATURE

NAVSHIPS 900,902: Technical Manual for Power Unit PU-116/U.

MANUFACTURER'S OR CONTRACTOR'S DATA

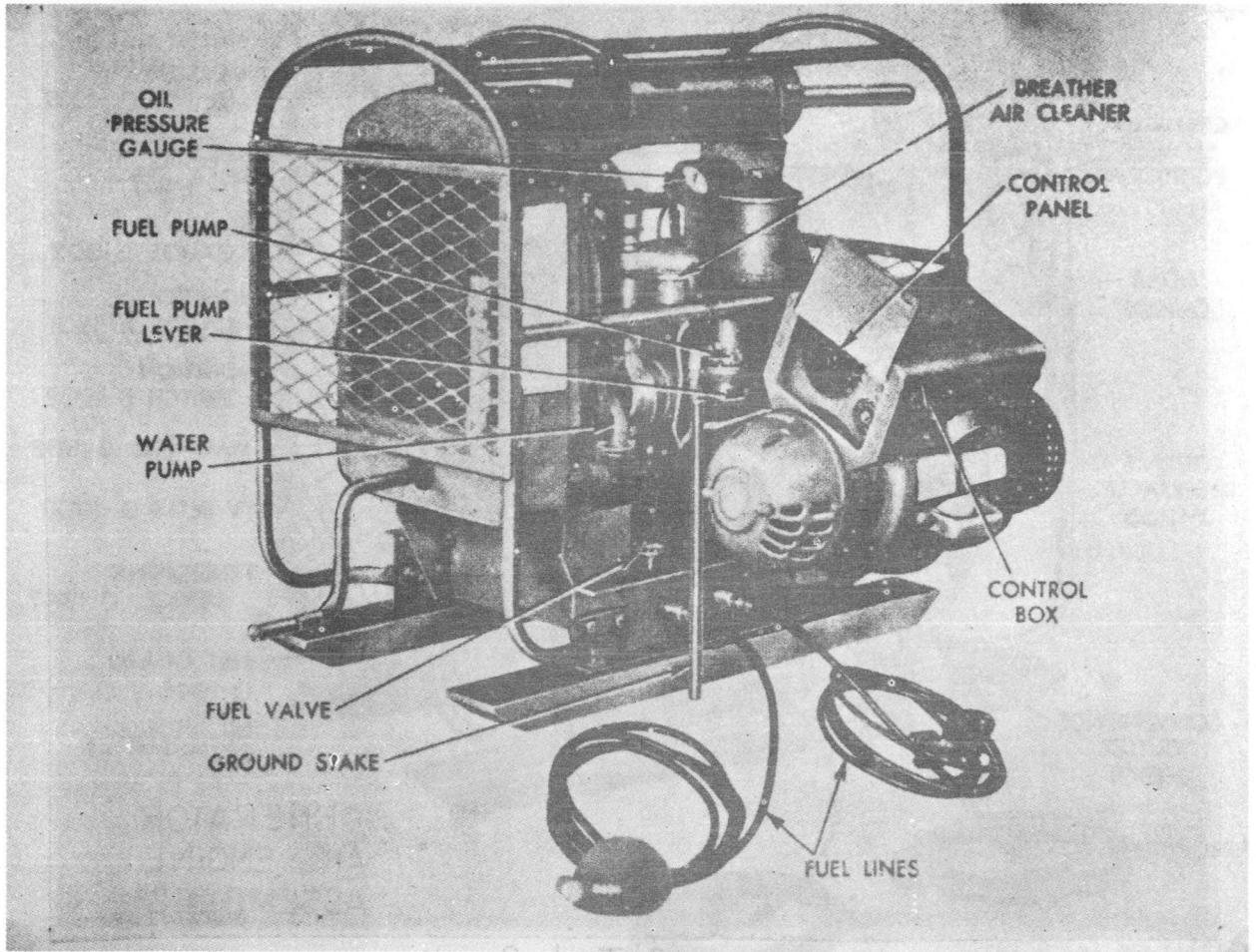
Homelite Corp, Port Chester, N.Y.

TYPE CLASSIFICATION
DESIGN COGNIZANCE TASSA
PROCUREMENT COGNIZANCE
STOCK NO.

Radio-Auxiliary

PU-116/U

POWER UNIT



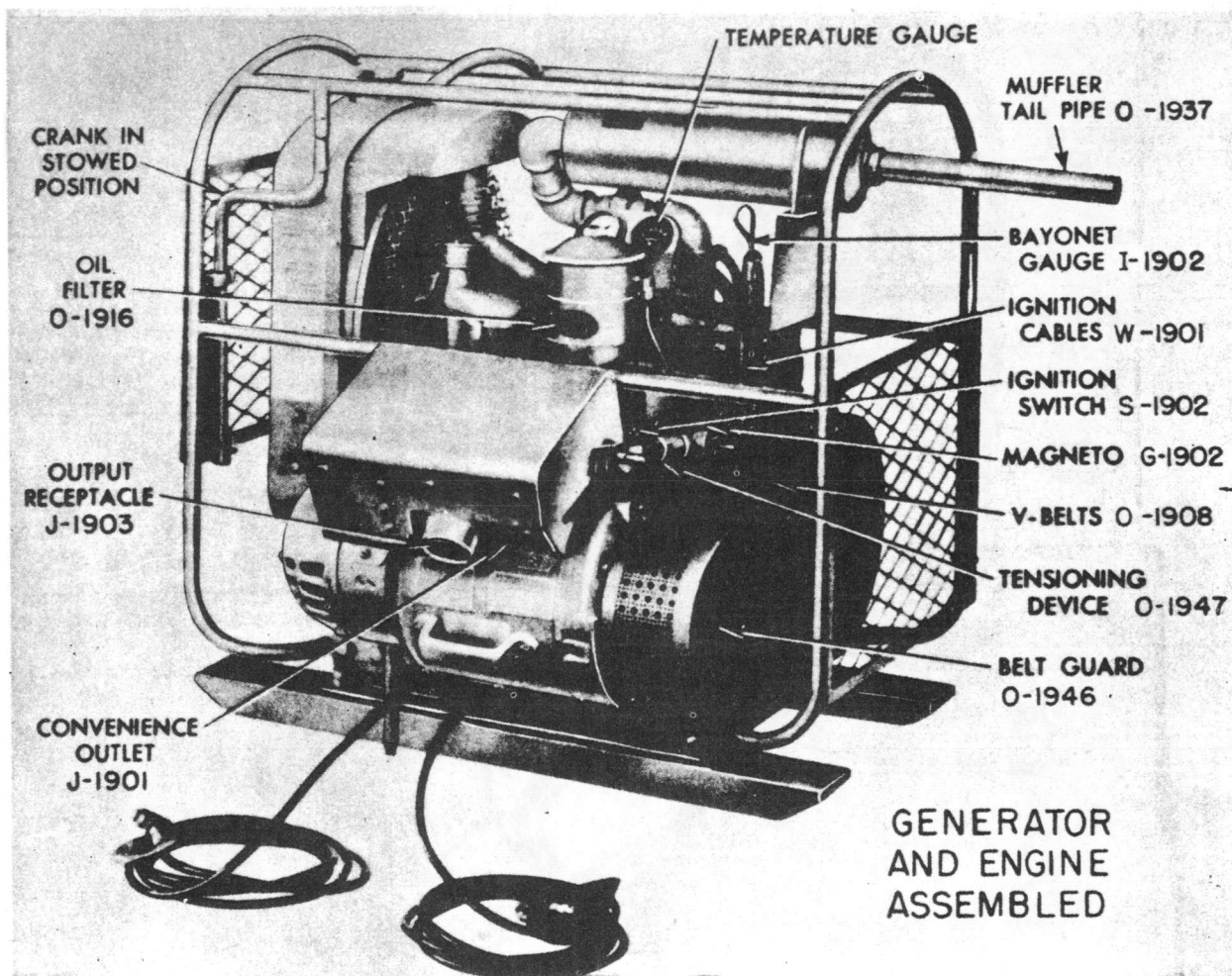
Power Unit PU-116/U

EQUIPMENT SUPPLIED DATA

QUANTITY PER EQUIPT	NAME AND NOMENCLATURE	OVERALL DIMENSIONS (inches)	WEIGHT (lbs.)
1	Engine (with guard rail)	19-5/8 X 29-1/2 X 38-3/4	372
1	Generator	13 X 15-1/2 X 21-1/2	164
1	Generator Carrying Case	14-1/2 X 20 X 24	50
1	Maintenane Parts Case	9-1/2 X 19 X 24	50

POWER UNIT

PU-116A/U



Power Unit PU-116A/U

FUNCTIONAL DESCRIPTION

The PU-116A/U is a portable power plant which supplies power for electrical, communications, or radar equipments requiring up to a maximum of four kilowatts of power at 115 v, single ph, 60 cycles.

Data on this sheet reflects the following field changes, FCI (12 March 1957).

RELATION TO OTHER EQUIPMENT

The PU-116A/U is basically the same as PU-116/U; except that a weather proof output power receptacle is used on PU-116A/U.

ELECTRICAL AND MECHANICAL CHARACTERISTICS

POWER OUTPUT: 4 kva, 85% pf.
 FREQUENCY STABILITY: 60 \pm 2 cps.
 VOLTAGE REGULATION: \pm 5% of nominal voltage which may be set at any point between 110 and 120 v.

MANUFACTURER'S OR CONTRACTOR'S DATA

Hazeltine Electronics Corp, Little Neck, N.Y.

Contract NObsr-42428, dated 30 June 1948.

Approximate Cost: \$1500 with Equipment spares.

October 1957

Radio-Auxiliary

PU-116A/U

POWER UNIT

TUBE AND/OR CRYSTAL COMPLEMENT

No Electron Tubes.

REFERENCE DATA AND LITERATURE

NAVSHIPS 91380: Technical Manual for Power Unit PU-116A/U.

TYPE CLASSIFICATION DESIGN COGNIZANCE BUSHIPS PROCUREMENT COGNIZANCE STOCK NO.

SHIPPING DATA

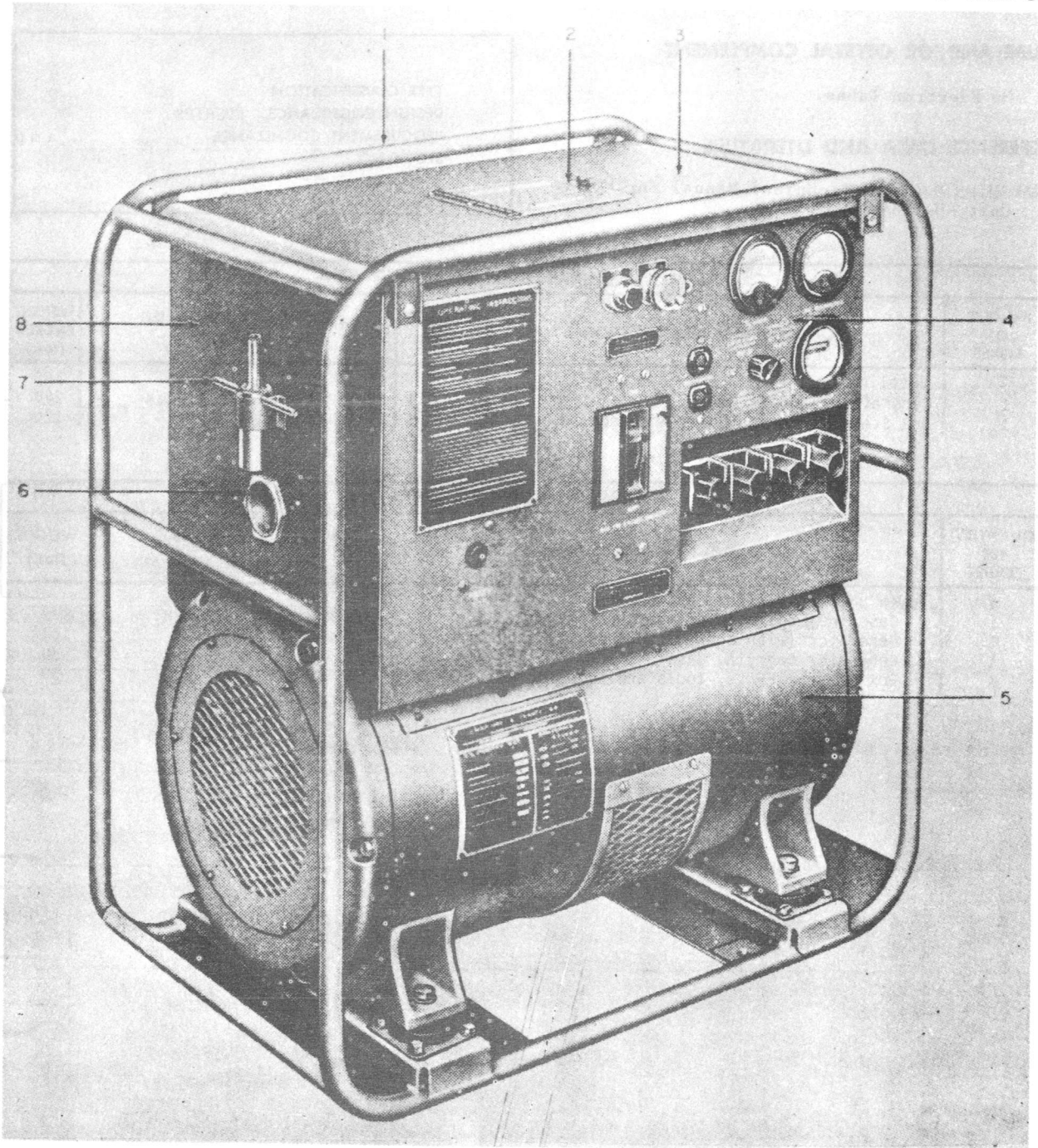
NUMBER OF BOXES	CONTENTS AND IDENTIFICATION	VOLUME (Cu.Ft.)	OVERALL DIMENSIONS (inches)	WEIGHT PACKED (lbs.)
1	Gasoline Engine	24	26-3/4 x 37 x 42	490
1	Generator in Steel Box	8.3	18-1/2 x 25-1/4 x 30-3/4	240
1	Box Standby Parts, Tools, Accessories	4.5	13-1/4 x 21-1/2 x 27	120

EQUIPMENT SUPPLIED DATA

QUANTITY PER EQUIPT	NAME AND NOMENCLATURE	OVERALL DIMENSIONS (inches)	WEIGHT (lbs.)
1	Power Unit PU-116A/U consists of:		
1	Gasoline Engine (with guard rail)	20-3/8 x 32-1/2 x 35-1/8	372
1	Generator (with control box and Mtg brackets)	15-1/8 x 19 x 22	164
1	Generator Carrying Case	15-1/2 x 21-3/8 x 25-1/2	50
1	Box Standby Parts, Tools and Accessories	9-3/8 x 19-5/8 x 23-1/2	50

MOTOR GENERATOR SET

PU-126/U



Motor Generator Set PU-126/U

- | | |
|--------------------------------|-------------------|
| 1 Frame | 5 Motor generator |
| 2 Lifting eye access door | 6 Input bushing |
| 3 Control box cover | 7 Socket wrench |
| 4 Instrument and control panel | 8 Control Box |

Motor Generator Set

October 1957

Radio-Auxiliary

PU-126/U

MOTOR GENERATOR SET

FUNCTIONAL DESCRIPTION

The PU-126/U is a transportable rotary converter that converts three phase, 60 cycle, 208 v to 400 cycle, 120/208 v, single or three-phase power.

No field changes in effect at time of preparation (12 March 1957).

ELECTRICAL AND MECHANICAL CHARACTERISTICS

MOTOR

POLES: 4.

PHASE: 3.

VOLTAGE: 208.

CYCLE: 60

SPEED

FULL LOAD: 1735 rpm.

NO LOAD: 1790 rpm.

AMPERE RATING: 52.5 amp per leg.

TEMPERATURE RISE: 40 deg C max.

GENERATOR

TYPE: permanent magnet.

POLES: 28.

PHASE: 1 to 3.

VOLTAGE: 120/208.

CYCLE: 400.

POWER FACTOR: 0.8.

AMPERE RATING: 104 amp, 1 ph; 43.5 amp per leg, 3 ph.

TUBE AND/OR CRYSTAL COMPLEMENT

No Electron Tubes.

REFERENCE DATA AND LITERATURE

TM11-910: Technical Manual for Motor Generator Set PU-126/U.

TYPE CLASSIFICATION DESIGN COGNIZANCE TASSA PROCUREMENT COGNIZANCE STOCK NO.

SHIPPING DATA

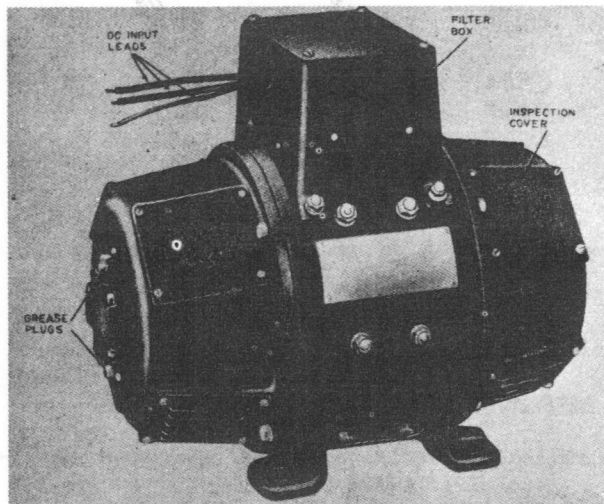
NUMBER OF BOXES	CONTENTS AND IDENTIFICATION	VOLUME (Cu.Ft.)	OVERALL DIMENSIONS (inches)	WEIGHT PACKED (lbs.)
1	Motor Generator Set PU-126/U	23	25-1/4 x 35-3/4 x 43-1/2	980

EQUIPMENT SUPPLIED DATA

QUANTITY PER EQUIPT	NAME AND NOMENCLATURE	OVERALL DIMENSIONS (inches)	WEIGHT (lbs.)
1	Motor Generator Set PU-126/U consists of:	19 x 32-1/2 x 34-1/4	800
1	Motor Generator	16 x 16-1/4 x 27-3/4	587
1	Control Box	16-1/4 x 18-3/4 x 25-3/4	175
1	Frame	19 x 32-1/2 x 34-1/4	38
1	Set Tools		

October 1957

Radio-Auxiliary

ROTARY CONVERTER**PU-134/U**

Rotary Converter PU-134/U

FUNCTIONAL DESCRIPTION

The PU-134/U is a rotating-armature unit designed to convert 230 v DC to 110 v, 60 cps, single phase alternating current. It has a stationary DC field and a dual wound, ball bearing supported rotary armature. The unit is fan-ventilated, semi-enclosed and it includes a filter unit.

The principal application of the equipment is on shipboard where 230 v DC is available and where 110 v, 60 cycle, single phase current is needed to power equipment in which the AC requirements do not exceed 600 volt amperes at about 85 per cent power factor.

No field changes in effect at time of preparation (25 February 1957).

ELECTRICAL AND MECHANICAL CHARACTERISTICS

INPUT VOLTS: 230 v DC.
 OUTPUT VOLTS: 110 v, 60 cps, single ph.
 INPUT CURRENT: 4.1 amp.
 OUTPUT CURRENT: 5.45 amp.
 OUTPUT IN VOLT AMPERES: 600 va.
 INPUT DC LINE FUSE: 30 amp.
 NORMAL TEMPERATURE RISE: 40°C.
 ARMATURE SPEED: 1800 rpm.
 ARMATURE BEARINGS: ball.
 DC BRUSH SUPPRESSION: .1ur (brush to frame).
 DC INPUT LINE SUPPRESSION: .5 uf on each conductor (line to frame) after iron core choke coils.
 AC BRUSH SUPPRESSION: .1ur (brush to frame).
 AC LINE SUPPRESSION FILTER: .01 uf from each conductor to frame before r-f choke coils. .3 uf from each conductor to frame after r-f choke coils.

MANUFACTURER'S OR CONTRACTOR'S DATA

Gothard Mfg. Co. Springfield, Illinois
 Model DL-42F.
 Sig Corp Order No. 14140-Ph-48.

TUBE AND/OR CRYSTAL COMPLEMENT

No Electron Tubes.

REFERENCE DATA AND LITERATURE

TM11-487E: Dept of Army Directory of Signal Corps Equipments, Power Equipment.

TYPE CLASSIFICATION
DESIGN COGNIZANCE TASSA
PROCUREMENT COGNIZANCE
STOCK NO.

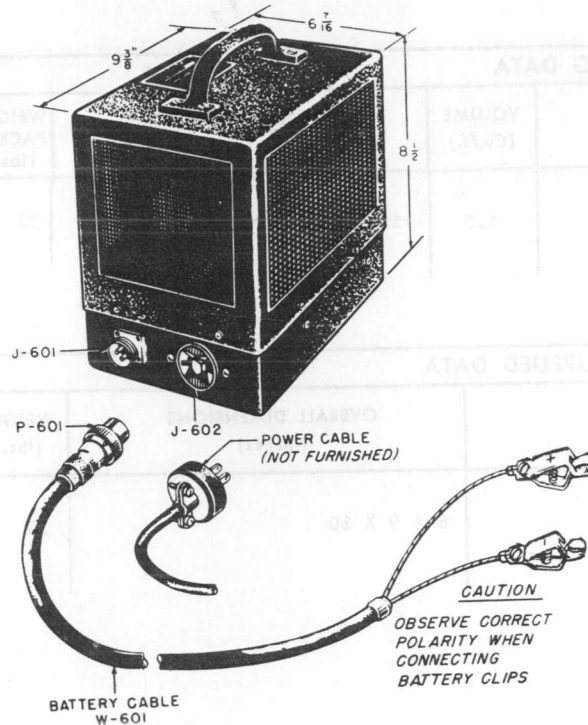
SHIPPING DATA

NUMBER OF BOXES	CONTENTS AND IDENTIFICATION	VOLUME (Cu.Ft.)	OVERALL DIMENSIONS (inches)	WEIGHT PACKED (lbs.)
1	Rotary Converter PU-134/U			150

EQUIPMENT SUPPLIED DATA

QUANTITY PER EQUIPT	NAME AND NOMENCLATURE	OVERALL DIMENSIONS (inches)	WEIGHT (lbs.)
1	Rotary Converter PU-134/U	9-3/4 x 13 x 15-3/4	122

ROTARY CONVERTER



Rotary Converter PU-151/U

FUNCTIONAL DESCRIPTION

The PU-151/U is used to supply single-phase AC power at 105 to 125 volts, 60 cps, at locations where other sources of AC power are not available. The converter requires a 12 volt DC source for its operation. The source may be a 12 volt storage battery, the 12 volt DC circuit in an airplane or truck, or any other similar source. The output of the converter is 100 Watts at unity power factor for continuous operation. Twenty-five percent overloading is permissible when a duty cycle of five minutes on, fifteen minutes off is observed.

The converter comprises the motor-generator type converter, input and output filter circuits for suppression of RF interference originating within the converter which will limit noise in accordance with the requirements of Navy spec 16E4(RE), connectors for input and output power and a detachable power cable.

No field changes in effect at time of preparation (25 July 1956).

RELATION TO OTHER EQUIPMENT

The PU-151/U was supplied in other procurements as a unit of Modification Kit MX-910/U for Noise-Field Intensity Meter TS-587/U and TS-587A/U.

Equipment Required but not Supplied: (1) Storage Batteries or equivalent source of 12 volts at 17 amp, (1) Output Power Cable.

ELECTRICAL AND MECHANICAL CHARACTERISTICS

FULL LOAD INPUT: 17 amp at 12 v DC.
 CONTINUOUS OUTPUT: 100 W at 115 v. 60 cps, single ph, unity power factor.
 RATED SPEED: 3600 rpm.
 VOLTAGE REGULATION: No load to full load, 33%.
 TEMPERATURE RISE: 50 °C for continuous operation.

MAX PERMISSIBLE AMBIENT TEMPERATURE: 40 °C for continuous operation without immediate relubrication.

INTERNAL FILTER: Input and output connections are filtered to minimize converter-caused RF interference within the range of 150 kc to above 400 mc.

POWER SOURCE REQUIRED: (2) 6 v, 175 amp hr lead-acid storage batteries (series connected) such as NT-6 v-SBMD-175AH or equivalent.

HEAT DISSIPATION: 104 W.

CONSTRUCTION: The converter unit is enclosed in a black-finished brass housing mounted on a sheet-metal base. The sides of the housing are perforated for ventilation and a carrying handle is mounted on its top.

MOUNTING: The converter must be set firmly on a solid base with the top of its housing level so that the machine shaft is horizontal and rotates without end thrust.

MANUFACTURER'S OR CONTRACTOR'S DATA

Stoddart Aircraft Radio Co., Hollywood, California.
 Contract NObr 43213, dated 28 July 1949.
 Approximate cost \$200 w/equipment spares.

TUBE AND/OR CRYSTAL COMPLEMENT

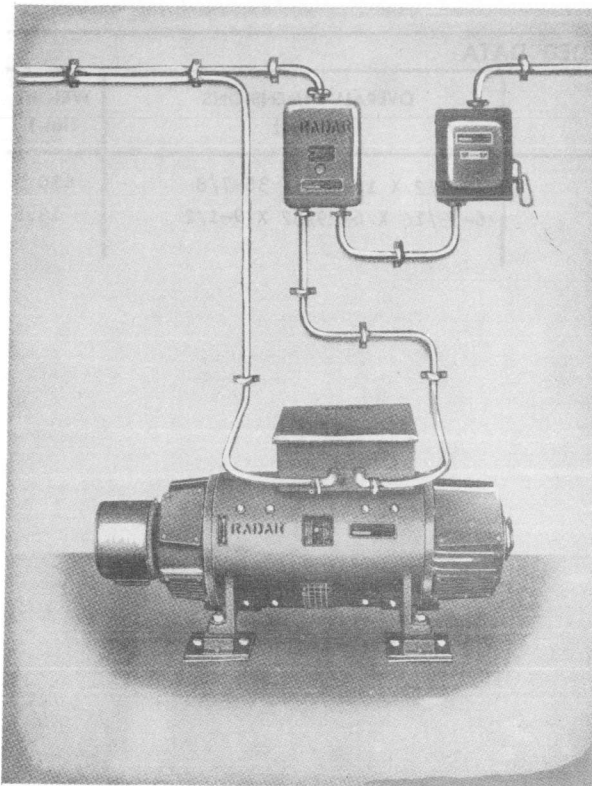
No Electron Tubes.

REFERENCE DATA AND LITERATURE

NAVSHIPS 91226: Technical Manual for Rotary Converter-PU-151/U.

TYPE CLASSIFICATION	
DESIGN COGNIZANCE	BUSHIPS
PROCUREMENT COGNIZANCE	CS-728(NAVY)
STOCK NO.	

December 1956

MOTOR GENERATOR MOTOR STARTER PU-163/U,SA-166/U

*Motor Generator Motor Starter
PU-163/U,SA-166/U*

FUNCTIONAL DESCRIPTION

The PU-163/U is a compact, constant-speed, continuous-duty, electric-generating sets designed to supply 115 volt, 60 cycle, single phase alternating current for shipborne radar navigation systems. It consists of a DC electric motor and an AC generator within a single frame. A speed regulating mechanism is contained in a separate housing attached to the motor end of the unit. The PU-163/U operates from a 230 volt DC power source.

The SA-166/U is a motor starter provided with the PU-163/U for starting and stopping the motor-generator.

No field changes in effect at time of preparation (2 August 1956).

RELATION TO OTHER EQUIPMENT

Similar to PU-164/U except for power source.

ELECTRICAL AND MECHANICAL CHARACTERISTICS**MOTOR**

HORSEPOWER: 4.
INPUT VOLTAGE: 115 v DC at 24 amp.
SPEED: 1800 rpm.

GENERATOR

VOLTAGE RATING: 115 v AC.
CURRENT RATING: 17.4 amp.
OUTPUT RATING: 1.8 kw (2 kva).
CYCLES: 60.
POWER FACTOR: 90%
SPEED: 1800 rpm.
EXCITOR VOLTS: 115 v DC.
PHASE: single.
TEMPERATURE RISE: 40°C.

MOTOR STARTER SA-166/U

VOLTS: 230 DC.
CURRENT: 20 amps.
HORSEPOWER: 5.
HEATING ELEMENT CURRENT: 13.3 to 15.2
amps.

MANUFACTURER'S OR CONTRACTOR'S DATA

Radio Marine Corp. of America, New York, N.Y.

Contract NObsr-52358, dated 26 March 1951

PU-163/U Electric Specialty Corp., Boston, Mass. Model No. FBC54/FBC54.
SA-166/U General Electric Co., Schenectady, N.Y. Model No-CR-4052-AIL.

Approximate Cost: PU-163/U-No Cost
Approximate Cost: SA-166/U-\$100.00 with equipment spares

TUBE AND/OR CRYSTAL COMPLEMENT

No Electron Tubes

REFERENCE DATA AND LITERATURE

TM11-5510: Dept of Army Technical Manual for Motor Generator-PU-164/U, Motor Starter-SA-167/U and Motor Generator-PU-163/U, Motor Starter-SA-166/U.

TYPE CLASSIFICATION
DESIGN COGNIZANCE BUSHIPS
PROCUREMENT COGNIZANCE 71-2507 (ARMY)
STOCK NO.

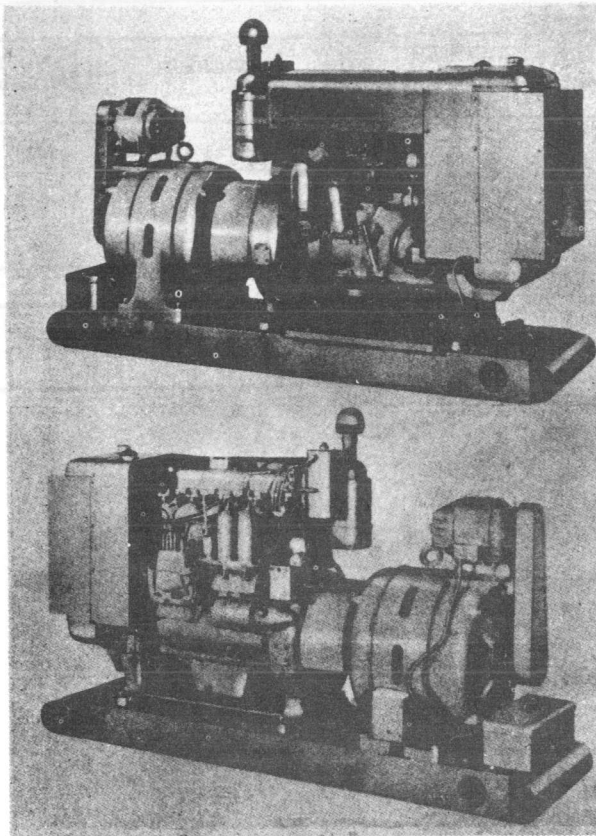
PU-163/U, SA-166/U MOTOR GENERATOR MOTOR STARTER

December 1956

EQUIPMENT SUPPLIED DATA

QUANTITY PER EQUIPT	NAME AND NOMENCLATURE	OVERALL DIMENSIONS (inches)	WEIGHT (lbs.)
1	Motor Generator PU-163/U	14-1/2 X 18-1/8 X 35-7/8	450
1	Motor Starter SA-166/U	6-13/16 X 6-29/32 X 9-1/2	13.5

POWER UNIT

Radio-Auxiliary
PU-19/FRC

Power Unit PU-19/FRC,
Right and Left Views

FUNCTIONAL DESCRIPTION

The PU-19/FRC is a portable, self-contained power plant consisting of a Diesel engine and an AC generator, which are connected by a mechanical coupling. It is designed to supply single phase AC for fixed radio installations. The unit is mounted on a skid base of electrically welded heavy-structural steel. A system of safety controls provide protection during operation.

No field changes in effect at time of preparation (15 March 1957).

ELECTRICAL AND MECHANICAL CHARACTERISTICS

ENGINE

CYCLE: 4

TYPE CYLINDER HEAD: Over-head valve.

CYLINDERS: 4.

BORE: 4.4 in.

STROKE: 5.5 in.

PISTON DISPLACEMENT: 334.5 cu. in.

COMPRESSION RATIO

DIESEL CYCLE: 14.2 to 1.

GASOLINE CYCLE: 6 to 1.

ENGINE SPEED

REGULAR FULL LOAD: 1200 rpm.

OVERSPEED STOP: 1320 rpm.

HORSEPOWER: 45.5 at 1200 rpm.

BATTERY VOLTAGE AND CAPACITY: 3-cell,
heavy-duty, 6 v.

GENERATOR

RATING: 20 kw (25 kva).

CURRENT: 104 amp.

VOLTAGE: 120/240 v.

POWER FACTOR: 80%.

SPEED: 1200 rpm.

TUBE AND/OR CRYSTAL COMPLEMENT

No Electron Tubes.

REFERENCE DATA AND LITERATURE

TM11-986: Technical Manual for Power Unit
PU-19/FRC.

TYPE CLASSIFICATION
DESIGN COGNIZANCE TASSA
PROCUREMENT COGNIZANCE
STOCK NO.

SHIPPING DATA

NUMBER OF BOXES	CONTENTS AND IDENTIFICATION	VOLUME (Cu.Ft.)	OVERALL DIMENSIONS (inches)	WEIGHT PACKED (lbs.)
1	Power Unit PU-19/FRC		37 X 67 X 140	6400

EQUIPMENT SUPPLIED DATA

QUANTITY PER EQUIPT	NAME AND NOMENCLATURE	OVERALL DIMENSIONS (inches)	WEIGHT (lbs.)
1	Power Unit PU-19/FRC	32 X 58-1/2 X 96	4430
1	Engine	28-1/16 X 52 X 52-7/8	1950
1	Alternator W/Exciter	30-7/16 X 37-3/8 X 38	1375
1	Control Panel	10-5/8 X 16-5/8 X 24-1/4	80
1	Base	6-1/2 X 26-3/8 X 96	575
1	Accessories, less exhaust material		300

February 1960

Radio-Auxiliary

GENERATOR SET, DIESEL ENGINE**PU-239/G****FUNCTIONAL DESCRIPTION**

Generator Set, Diesel Engine PU-239/G is a completely self-contained, mobile power supply. It is a general purpose unit, mounted on a standard 1-1/2 ton, 2 wheel trailer, intended for operation as an independent power source for various electronic equipments requiring 60 cycle ac.

No field changes in effect at time of preparation (3 December 1959).

ELECTRICAL AND MECHANICAL CHARACTERISTICS**ENGINE**

MAKE: Detroit Diesel Div, General Motor Corp.

MODEL: GM-2-71.

TYPE: 2 stroke cycle.

NUMBER OF CYLINDERS: 2.

SPEED: 1200 rpm.

HORSEPOWER: 47 brake.

TYPE OF COOLING: Water.

ELECTRICAL STARTING SYSTEM.

BATTERY: (2) 6 v.

AC GENERATOR**ALTERNATOR**

MAKE: Kato Engineering Company.

MODEL: 53ETS6.

TYPE: 2356.

RATING: 20 kw, 120/208 v.

FREQUENCY: 60 cps.

PHASE: 3, 4-wire.

POWER FACTOR: 0.80.

EXCITER

MAKE: Kato Engineering Co.

RATING: 125 v, 5 amp.

MANUFACTURER'S OR CONTRACTOR'S DATA

Libby Welding Co. Inc., Kansas City, Mo.
Contract NOM-60469.

TUBE AND/OR CRYSTAL COMPLEMENT

No Electron Tubes or Crystals used.

REFERENCE DATA AND LITERATURE

Nomenclature Card for GENERATOR SET, DIESEL ENGINE PU-239/G.

TYPE CLASSIFICATION (NAVY)
DESIGN COGNIZANCE USN, BUSHIPS
PROCUREMENT COGNIZANCE SPEC: MIL-G-16262 (MC)
STOCK NO.
R.D.B. IDENT. NO.

EQUIPMENT SUPPLIED DATA

QUANTITY PER EQUIP	NAME AND NOMENCLATURE	OVERALL DIMENSIONS (inches)	WEIGHT (lbs.)
1	Generator Set, Diesel Engine PU-239/G	86 X 92 X 160	

GENERATOR SET, DIESEL ENGINE

PU-239A/G

FUNCTIONAL DESCRIPTION

Generator Set, Diesel Engine PU-239A/G is a completely self-contained, mobile power supply. It is a general purpose unit, mounted on a standard 1-1/2 ton, 2 wheel trailer, intended for operation as an independent power source for various electronic equipments requiring 60 cycle A.C.

No field changes in effect at time of preparation (3 December 1959).

PHASE: 3, 4-wire.

POWER FACTOR: 0.80.

EXCITER

MAKE: Kato Engineering Company.

RATING: 125 v, 5 amp.

MANUFACTURER'S OR CONTRACTOR'S DATA

West Coast Engine and Equipment Company,
Berkeley, California.

ELECTRICAL AND MECHANICAL CHARACTERISTICS

ENGINE

MAKE: General Motors Corp.

MODEL: GM-2-71.

TYPE: Diesel.

NUMBER OF CYLINDERS: 2.

AIR CLEANER: Oil-bath type.

ELECTRICAL STARTING SYSTEM

GENERATOR, BATTERY CHARGING: 24 v belt driven.

STARTING MOTOR: 24 v.

BATTERIES: (1) 12 v, Spec MIL-B-11188.

AC GENERATOR

ALTERNATOR

MAKE: Kato Engineering Company.

MODEL: 53ETS6.

TYPE: 2356.

RATING: 20 kw, 120/208 v.

FREQUENCY: 60 cps at 1200 rpm.

TUBE AND/OR CRYSTAL COMPLEMENT

No Electron Tubes or Crystals used.

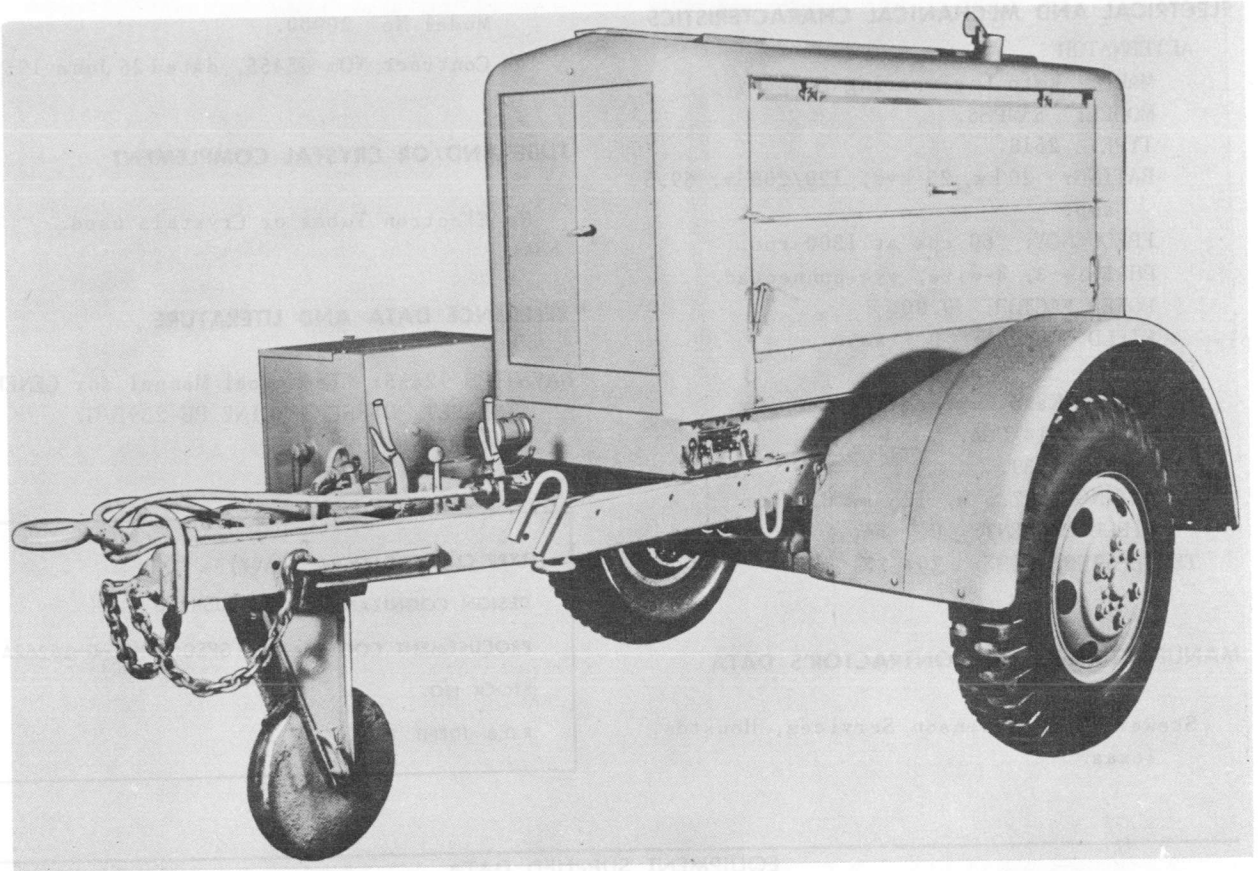
RELATION TO OTHER EQUIPMENT

Nomenclature Card for GENERATOR SET, DIESEL ENGINE PU-239A/G.

TYPE CLASSIFICATION (NAVY)
DESIGN COGNIZANCE USN, BUSHIPS
PROCUREMENT COGNIZANCE SPEC:
MIL-G-16262A(MC)
STOCK NO.
R.D.B. IDENT. NO.

EQUIPMENT SUPPLIED DATA

QUANTITY PER EQUIPT	NAME AND NOMENCLATURE	OVERALL DIMENSIONS (inches)	WEIGHT (lbs.)
1	Generator Set, Diesel Engine PU-239A/G	84 X 84 X 163	4,200

GENERATOR SET, DIESEL ENGINE**PU-239B/G***Generator Set, Diesel Engine PU-239B/G***FUNCTIONAL DESCRIPTION**

Generator Set, Diesel Engine PU-239B/G is a completely self-contained, mobile power supply. It is a general purpose unit, mounted on a standard 1-1/2 ton, 2 wheel trailer, intended for operation as an independent power source for various electronic equipments requiring 60 cycle A. C.

No field changes in effect at time of preparation (3 December 1959).

ELECTRICAL AND MECHANICAL CHARACTERISTICS**ENGINE**

MAKE: Detroit Diesel Div., General Motors Corp.
 MODEL: 2055.
 TYPE: Diesel.
 NUMBER OF CYLINDERS: 2.
 BORE: 4-1/4 in.

STROKE: 5 in.
 TOTAL DISPLACEMENT: 142 cubic in.
 DIRECTION OF CRANKSHAFT ROTATION: CW.
 SPEED RANGE: 350 rpm to 1800 rpm.
 HORSEPOWER: 30.
 COMPRESSION RATIO: 16 to 1.
 COMPRESSION PRESSURE AT 400 RPM: 450 lbs/sq. in.
 FIRING ORDER: 1-2.
 INJECTOR RATING: 60 cubic millimeters.
 LUBRICATION SYSTEM CAPACITY: 11 qts.
 TYPE OF COOLING: Water.
 RADIATOR CAPACITY: 16.5 qts.
 AIR CLEANER: Oil-bath type.
 FUEL TANK CAPACITY: 16 gal.
 ELECTRICAL STARTING SYSTEM
 GENERATOR, BATTERY CHARGING: 24 v belt driven.
 STARTING MOTOR: 24 v solenoid operated.
 BATTERIES: (2) 12 v, Spec MIL-B-11188.
 AC GENERATOR

PU-239B/G

GENERATOR SET, DIESEL ENGINE

ELECTRICAL AND MECHANICAL CHARACTERISTICS

Model No. 20900.

Contract NOM-65455, dated 26 June 1953.

ALTERNATOR

MAKE: Kato Engineering Company.
 MODEL: 55MPS6.
 TYPE: 2518.
 RATING: 20 kw, 25 kva, 120/208 v, 69.5
 amp.
 FREQUENCY: 60 cps at 1200 rpm.
 PHASE: 3, 4-wire, wye-connected.
 POWER FACTOR: 0.80.
 FIELD CURRENT: 0.7 amp.

EXCITER

MAKE: Kato Engineering Company.
 MODEL: 14XUGA.
 TYPE: 1639.
 RATING: 87.5 w, 125 v, 0.7 amp.
 FIELD CURRENT: 0.7 amp.
 TEMPERATURE RISE: 104° F.

TUBE AND/OR CRYSTAL COMPLEMENT

No Electron Tubes or Crystals used.

REFERENCE DATA AND LITERATURE

NAVSHIPS 92455: Technical Manual for GENER-
 ATOR SET, DIESEL ENGINE PU-239B/G.

MANUFACTURER'S OR CONTRACTOR'S DATA

Stewart and Stevenson Services, Houston,
 Texas.

TYPE CLASSIFICATION (NAVY)
DESIGN COGNIZANCE USN, BUSHIPS
PROCUREMENT COGNIZANCE SPEC: MIL-G-16262A (MC)
STOCK NO.
R.D.B. IDENT. NO.

EQUIPMENT SUPPLIED DATA

QUANTITY PER EQUIP	NAME AND NOMENCLATURE	OVERALL DIMENSIONS (inches)	WEIGHT (lbs.)
1	Generator Set, Diesel Engine PU-239B/G	80 X 88-1/2 X 164	5108

February 1960

Radio-Auxiliary

GENERATOR SET, DIESEL ENGINE**PU-239C/G****FUNCTIONAL DESCRIPTION**

Generator Set, Diesel Engine PU-239C/G is a completely self-contained, mobile power supply. It is a general purpose unit, mounted on a standard 1-1/2 ton, 2 wheel trailer, intended for operation as an independent power source for various electronic equipments requiring 60 cycle ac.

No field changes in effect at time of preparation (3 December 1959).

STARTING MOTOR: 24 v solenoid operated.

BATTERIES: (2) 12 v, Spec MIL-B-11188.

**AC GENERATOR
ALTERNATOR**

MAKE: Kato Engineering Company.

MODEL: 53MPS6.

TYPE: 3201.

RATING: 20 kw, 120/208 v.

FREQUENCY: 60 cps.

PHASE: 3, 4-wire.

POWER FACTOR: 0.80.

ELECTRICAL AND MECHANICAL CHARACTERISTICS**ENGINE**

MAKE: Detroit Diesel Div, General Motors Corp.

MODEL: 2055.

SERIES: 2-71.

TYPE: Diesel.

NUMBER OF CYLINDERS: 2.

BORE: 4-1/4 in.

STROKE: 5 in.

TOTAL DISPLACEMENT: 142 cubic in.

DIRECTION OF CRANKSHAFT ROTATION: Clockwise.

SPEED RANGE: 350 rpm to 1800 rpm.

HORSEPOWER: 30.

COMPRESSION RATIO: 16 to 1.

COMPRESSION PRESSURE AT 400 RPM: 450 lbs/sq. in.

FIRING ORDER: 1-2.

INJECTION RATING: 60 cubic millimeters.

LUBRICATION SYSTEM CAPACITY: 11 qts.

TYPE OF COOLING: Water.

RADIATOR CAPACITY: 16.5 qts.

AIR CLEANER: Oil-bath type.

FUEL TANK CAPACITY: 16 gal.

ELECTRICAL STARTING SYSTEM

GENERATOR, BATTERY CHARGING: 24 v belt driven.

MANUFACTURER'S OR CONTRACTOR'S DATA

Stewart Steel Products Inc., Brooklyn, New York.

Contract NOM-66246, dated 20 April 1954.

TUBE AND/OR CRYSTAL COMPLEMENT

No Electron Tubes or Crystals used.

REFERENCE DATA AND LITERATURE

Nomenclature Card for GENERATOR SET, DIESEL ENGINE PU-239C/G.

TYPE CLASSIFICATION (NAVY)

DESIGN COGNIZANCE USN, BUSHIPS

PROCUREMENT COGNIZANCE SPEC:
MIL-G-16262B(MC)

STOCK NO.

R.D.B. IDENT. NO.

EQUIPMENT SUPPLIED DATA

QUANTITY PER EQUIPT	NAME AND NOMENCLATURE	OVERALL DIMENSIONS (inches)	WEIGHT (lbs.)
1	Generator Set, Diesel Engine PU-239C/G	80 X 92 X 160	6,000

February 1960

Radio-Auxiliary

GENERATOR SET, DIESEL ENGINE**PU-239D/G****FUNCTIONAL DESCRIPTION**

Generator Set, Diesel Engine PU-239D/G is a completely self-contained, mobile power supply. It is a general purpose unit, mounted on a standard 1-1/2 ton, 2 wheel trailer, intended for operation as an independent power source for various electronic equipments requiring 60 cycle ac.

No field changes in effect at time of preparation (3 December 1959).

ELECTRICAL AND MECHANICAL CHARACTERISTICS**ENGINE**

MAKE: Detroit Diesel Div, General Motors Corp.

MODEL: 2055 (diesel 2 cyc engine).

TYPE: 2 stroke cycle.

NUMBER OF CYLINDERS: 2.

SPEED: 1800 rpm.

HORSEPOWER: 42 brake.

TYPE OF COOLING: Water.

ELECTRICAL STARTING SYSTEM.

GENERATOR, BATTERY CHARGING: 24 v belt driven.

STARTING MOTOR: 24 v solenoid operated.

BATTERIES: (2) 12 v, spec MIL-B-11188; or (1) 24 v.

AC GENERATOR**ALTERNATOR**

MAKE: Kato Engineering Co.

MODEL: M53M5X4.

TYPE: 3432.

RATING: 20 kw, 120/208 v, or 240/416 v.

FREQUENCY: 60 cps.

PHASE: 1 and 3, 4-wire or 3-wire.

POWER FACTOR: 0.80.

EXCITER

MAKE: Kato Engineering Co.

MODEL: 26XUG1.

TYPE: 3784.

RATING: 87.5 W, 125 v, 0.7 amp.

MANUFACTURER'S OR CONTRACTOR'S DATA

Consolidated Diesel Electric Corp, Stamford, Conn.

Model No. 4009.

Contract N0m-67700, dated 17 June 1955.

TUBE AND/OR CRYSTAL COMPLEMENT

No Electron Tubes or Crystals used.

REFERENCE DATA AND LITERATURE

Nomenclature Card for Generator Set, Diesel Engine PU-239D/G.

TYPE CLASSIFICATION (NAVY)

DESIGN COGNIZANCE USN, BUSHIPS

PROCUREMENT COGNIZANCE

STOCK NO.

R.D.B. IDENT. NO.

EQUIPMENT SUPPLIED DATA

QUANTITY PER EQUIPT	NAME AND NOMENCLATURE	OVERALL DIMENSIONS (inches)	WEIGHT (lbs.)
1	Generator Set, Diesel Engine PU-239D/G		

February 1960

Radio-Auxiliary

GENERATOR SET, DIESEL ENGINE**PU-239E/G****FUNCTIONAL DESCRIPTION**

Generator Set, Diesel Engine PU-239E/G is a completely self-contained, mobile power supply. It is a general purpose unit, mounted on a standard 1-1/2 ton, 2 wheel trailer, intended for operation as an independent power source for various electronic equipments requiring 60 cycle ac.

No field changes in effect at time of preparation (3 December 1959).

RATING: 20 kw, 120/208 v, 240/416 v.

FREQUENCY: 60 cps.

PHASE: 1 and 3, 4 wire or 3 wire.

POWER FACTOR: 0.80.

EXCITER

MAKE: Kato Engineering Company.

MODEL: 26XUG1.

TYPE: 3784.

RATING: 87.5 W, 125 v, 0.7 amp.

ELECTRICAL AND MECHANICAL CHARACTERISTICS**ENGINE**

MAKE: Detroit Diesel Div, General Motors Corp.

MODEL: 2913.

TYPE: 2 stroke cycle.

NUMBER OF CYLINDERS: 2.

SPEED: 1800 rpm.

HORSEPOWER: 42 brake.

TYPE OF COOLING: Water.

ELECTRICAL STARTING SYSTEM

GENERATOR, BATTERY CHARGING: 24 v belt driven.

STARTING MOTOR: 24 v solenoid operated.

BATTERIES: (2) 12 v, spec MIL-B-11188; or (1) 24 v.

AC GENERATOR**ALTERNATOR**

MAKE: Kato Engineering Company.

MODEL: M53M5X4.

TYPE: 5320.

MANUFACTURER'S OR CONTRACTOR'S DATALibby Welding Co. Inc., Kansas City, Mo.
Model No. LW20.**TUBE AND/OR CRYSTAL COMPLEMENT**

No Electron Tubes or Crystals used.

REFERENCE DATA AND LITERATURE

Nomenclature Card for GENERATOR SET, DIESEL ENGINE PU-239E/G.

TYPE CLASSIFICATION (NAVY)	
DESIGN COGNIZANCE USN, BUSHIPS	
PROCUREMENT COGNIZANCE	SPEC:
STOCK NO.	MIL-G-18050(MC)
R.D.B. IDENT. NO.	

EQUIPMENT SUPPLIED DATA

QUANTITY PER EQUIP	NAME AND NOMENCLATURE	OVERALL DIMENSIONS (inches)	WEIGHT (lbs.)
1	Generator Set, Diesel Engine PU-239E/G		

February 1960

Radio-Auxiliary

GENERATOR SET, DIESEL ENGINE**PU-239F/G****FUNCTIONAL DESCRIPTION**

POWER FACTOR: 0.80.

Generator Set, Diesel Engine PU-239F/G is a completely self-contained, mobile power supply. It is a general purpose unit, mounted on a standard 1-1/2 ton, 2 wheel trailer, intended for operation as an independent power source for various electronic equipments requiring 60 cycle ac.

No field changes in effect at time of preparation (3 December 1959).

ELECTRICAL AND MECHANICAL CHARACTERISTICS**ENGINE**

MAKE: Detroit Diesel Div, General Motors Corp.

MODEL: 2913.

SERIES: 2-71.

ELECTRICAL STARTING SYSTEM

GENERATOR, BATTERY CHARGING: 24 v.

STARTING MOTOR: 24 v solenoid operated.

BATTERY: (1) 24 v.

AC GENERATOR**ALTERNATOR**

MAKE: American Marc Incorporated.

MODEL: KBA 620.

RATING: 20 kw, 120/208 v to 240/416 v.

FREQUENCY: 60 cps.

PHASE: 3, 3-wire, delta.

MANUFACTURER'S OR CONTRACTOR'S DATA

Stewart and Stevenson Services Inc.,
Houston, Texas.
Model No. 27800.
Contract NOM-70194.

TUBE AND/OR CRYSTAL COMPLEMENT

No Electron Tubes or Crystals used.

REFERENCE DATA AND LITERATURE

NAVSHIPS 93400: Preliminary Data Sheet for
GENERATOR SET, DIESEL ENGINE, TRAILER
MOUNTED, PU-239F/G.

TYPE CLASSIFICATION (NAVY)

DESIGN COGNIZANCE USN, BUSHIPS

PROCUREMENT COGNIZANCE SPEC:
MIL-G-18050A(MC)

STOCK NO.

R.D.B. IDENT. NO.

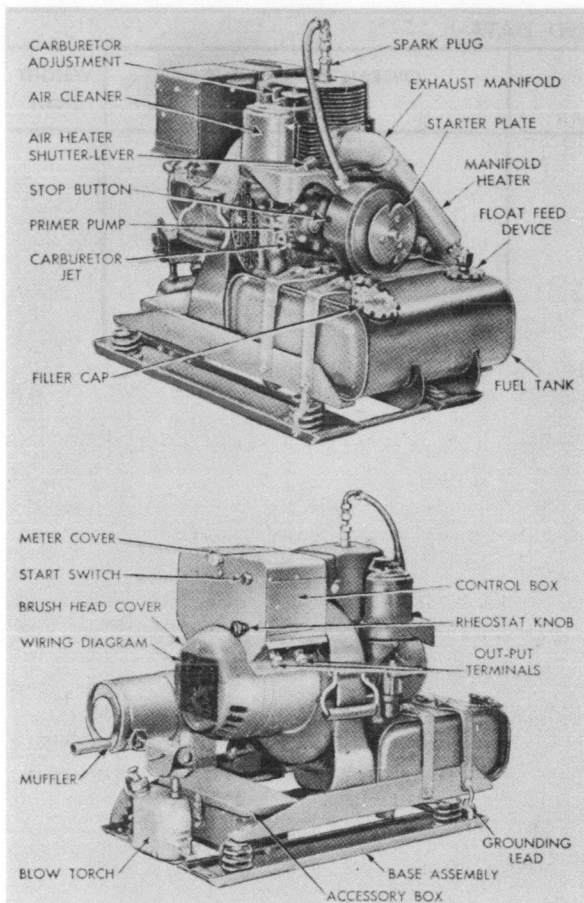
EQUIPMENT SUPPLIED DATA

QUANTITY PER EQUIPT	NAME AND NOMENCLATURE	OVERALL DIMENSIONS (inches)	WEIGHT (lbs.)
1	Generator Set, Diesel Engine, Trailer Mounted PU-239F/G		2600

April 1958

MOTOR-GENERATOR

Radio-Auxiliary

PU-250/U*Motor-Generator PU-250/U***FUNCTIONAL DESCRIPTION**

The PU-250/U consists of a single-cylinder, air-cooled, two-cycle gasoline engine directly connected to a self-excited, direct current generator. A control box, mounted on the generator yolk, contains a voltmeter, ammeter shunt, automatic voltage regulator, reverse current cutout, calibrating, rheostat, radio suppression filter and two out-put terminals.

An air heater permits engine operation at temperatures down to -65 deg F, and a blow-torch is provided to preheat the engine for starting at temperatures below -20 deg F. A float-feed device provides the means for using a gravity-feed auxiliary fuel tank. The generator set can be started manually with a starting rope or by use of a 24 volt storage battery.

No field changes in effect at time of preparation (26 December 1957).

RELATION TO OTHER EQUIPMENT

The PU-250/U is identical to the Homelite Corp Generator Set Model 24D28-23A.

Equipment Required but not Supplied: 24 v batt for other than manual starting.

ELECTRICAL AND MECHANICAL CHARACTERISTICS

GENERATOR OUTPUT: 28 v DC, 1-1/2 kw.

GASOLINE ENGINE: 3600 to 3700 rpm (governed) directly coupled to generator.

OPERATING TEMP RANGE: Down to -65 deg F.

TYPE GROUND SYSTEM: Neg.

FEATURES: Entire set shielded and filtered to suppress radio interference.

FUEL MIXTURE: 3/4 pt SAE-30 motor oil per gal gas.

POWER SOURCE REQUIRED: None. A 24 v storage batt may be employed for starting.

MTG DATA: Shock mounted.

MANUFACTURER'S OR CONTRACTOR'S DATA

Homelite Corp, Port Chester, N.Y.

TUBE AND/OR CRYSTAL COMPLEMENT

No Electron Tubes or Crystals.

REFERENCE DATA AND LITERATURE

NAVSHIPS 91731, Technical Manual for Homelite Generator Set Model 24D28-23A.

TYPE CLASSIFICATION	
DESIGN COGNIZANCE	BUSHIPS
PROCUREMENT COGNIZANCE	
STOCK NO.	

Radio-Auxiliary
PU-250/U

MOTOR-GENERATOR

April 1958

EQUIPMENT SUPPLIED DATA

QUANTITY PER EQUIPT	NAME AND NOMENCLATURE	OVERALL DIMENSIONS (inches)	WEIGHT (lbs.)
1	Motor-Generator PU-250/U		
1	Auxiliary Fuel Line		
1	Starting Rope		
1	Blowtorch		
1	Canvas Cover		
1	Service Kit (Tools)		

ELECTRICAL AND MECHANICAL CHARACTERISTICS

GENERATOR OUTPUT: 25 v AC, 1-1/2 kw.
 MOTOR ENGINE: 3/4 hp (1700 rpm)
 OPERATING TEMP RANGE: Down to -65 deg F.
 TYPE: GROUND SYSTEM: Neg.
 FEATURES: Battery ext. shielded and filtered to suppress radio interference.
 FUEL MIXTURE: 1-4 cc 2AB-30 motor oil per cc fuel.
 OIL: None. A 24 v storage battery may be employed for starting.
 WIND DATA: Not mounted.

MANUFACTURER'S OR CONTRACTOR'S DATA

Boeing Corp., Fort Belvoir, W. Va.

TUBE AND/OR CRYSTAL COMMENT

No function in use or crystals.

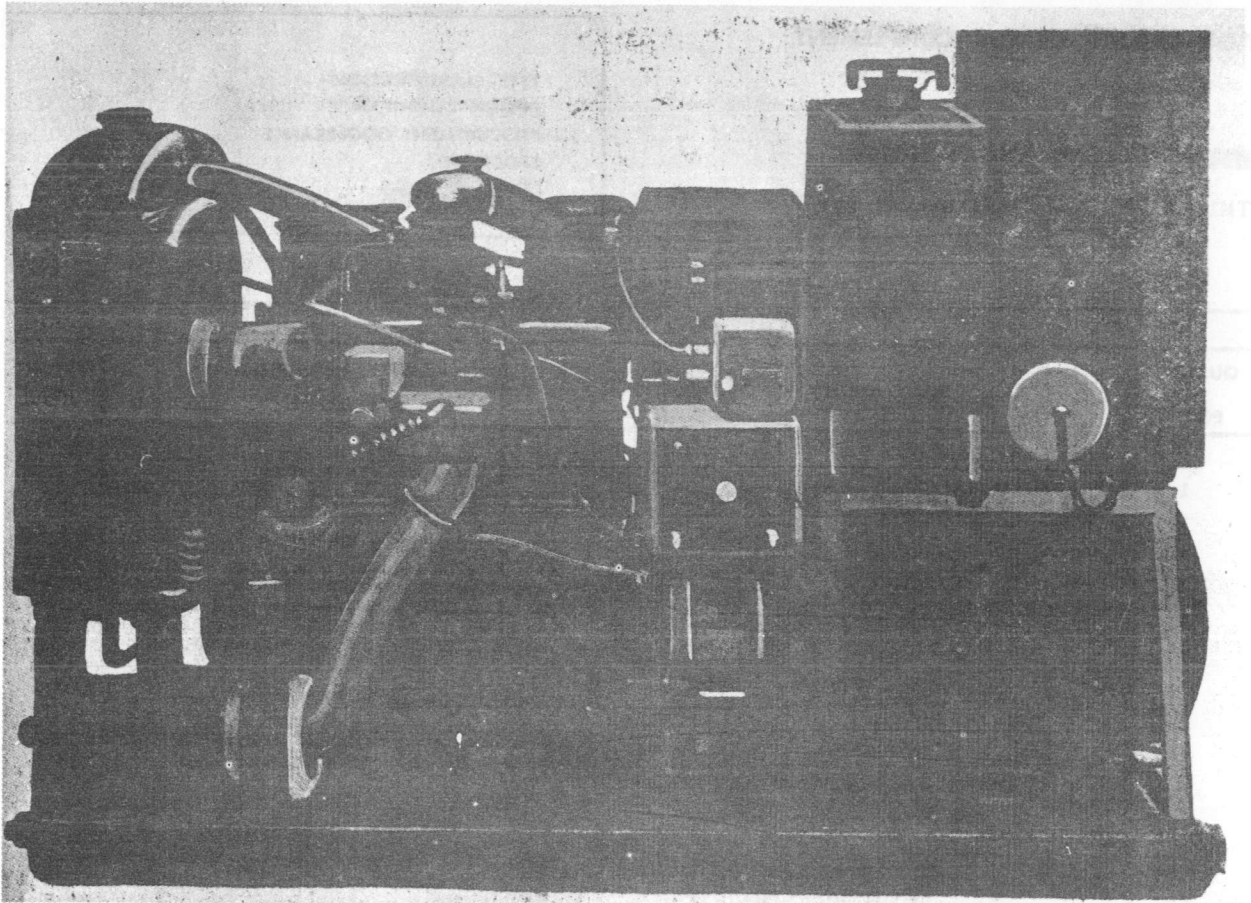
REFERENCE DATA AND LITERATURE

AVIATION SUPPLY (Technical Manual) Homeite
 (Revision) Part Model 2AD38 22A.

TYPE CASE: NONE
 DESIGN: COMMERCIAL
 PROJECT: W-30 W-2442
 21 DEC 54

FUNCTIONAL DESCRIPTION

The PU-250/U is a ground-mounted, battery-powered, electrically-driven generator. The generator is a permanent magnet type with a synchronous motor. The generator output is regulated by a motor-driven voltage regulator. The generator is designed to operate at a constant speed of 1700 rpm. The generator is capable of operating at a constant output of 25 v AC, 1-1/2 kw. The generator is designed for operation in a temperature range of -65 deg F to +125 deg F. The generator is designed for operation in a humidity range of 95% relative humidity. The generator is designed for operation in a salt-crystal environment. The generator is designed for operation in a sand environment. The generator is designed for operation in a vibration environment. The generator is designed for operation in a shock environment. The generator is designed for operation in a lightning environment. The generator is designed for operation in a magnetic field environment. The generator is designed for operation in a radio frequency environment. The generator is designed for operation in a microwave environment. The generator is designed for operation in a laser environment. The generator is designed for operation in a high-altitude environment. The generator is designed for operation in a high-temperature environment. The generator is designed for operation in a high-pressure environment. The generator is designed for operation in a high-voltage environment. The generator is designed for operation in a high-current environment. The generator is designed for operation in a high-frequency environment. The generator is designed for operation in a high-speed environment. The generator is designed for operation in a high-acceleration environment. The generator is designed for operation in a high-g environment. The generator is designed for operation in a high-vibration environment. The generator is designed for operation in a high-shock environment. The generator is designed for operation in a high-magnetic field environment. The generator is designed for operation in a high-radio frequency environment. The generator is designed for operation in a high-microwave environment. The generator is designed for operation in a high-laser environment. The generator is designed for operation in a high-altitude environment. The generator is designed for operation in a high-temperature environment. The generator is designed for operation in a high-pressure environment. The generator is designed for operation in a high-voltage environment. The generator is designed for operation in a high-current environment. The generator is designed for operation in a high-frequency environment. The generator is designed for operation in a high-speed environment. The generator is designed for operation in a high-acceleration environment. The generator is designed for operation in a high-g environment. The generator is designed for operation in a high-vibration environment. The generator is designed for operation in a high-shock environment. The generator is designed for operation in a high-magnetic field environment. The generator is designed for operation in a high-radio frequency environment. The generator is designed for operation in a high-microwave environment. The generator is designed for operation in a high-laser environment.

POWER UNIT**PU-26/U***Power Unit PU-26/U***FUNCTIONAL DESCRIPTION**

The PU-26/U may be used to furnish electricity to operate radio equipment, signal systems, lights, motors, heating units, and other appliances where commercial power service is not available, or upon failure of such power.

No field changes in effect at time of preparation (15 March 1957).

RELATION TO OTHER EQUIPMENT

Equipment Required but not Supplied: (1) Battery.

ELECTRICAL AND MECHANICAL CHARACTERISTICS**ENGINE**

TYPE: L-head.
 CYLINDERS: 4.
 BORE: 3-1/8 in.
 STROKE: 4-3/8 in.
 PISTON DISPLACEMENT: 134.2 cu. in.
 COMPRESSION RATIO: 6.48 to 1.
 HORSEPOWER (MAX, BRAKE): 35 wt, 1800 rpm.
 COMPRESSION: 111 psi at 185 rpm.

GENERATOR

RATING: 12.5 kw at 80% pf. or 15.6 kva at unity pf.

OUTPUT

4-WIRE: 120/208 or 240/416 v, 3 ph, 60 cps.
 3-WIRE: 120/240, 3 ph.
 SPEED: 1800 rpm.

October 1957

PU-26/U

POWER UNIT

TUBE AND/OR CRYSTAL COMPLEMENT

No Electron Tubes.

REFERENCE DATA AND LITERATURE

TM11-976: Technical Manual for Power Unit
PU-26/U.

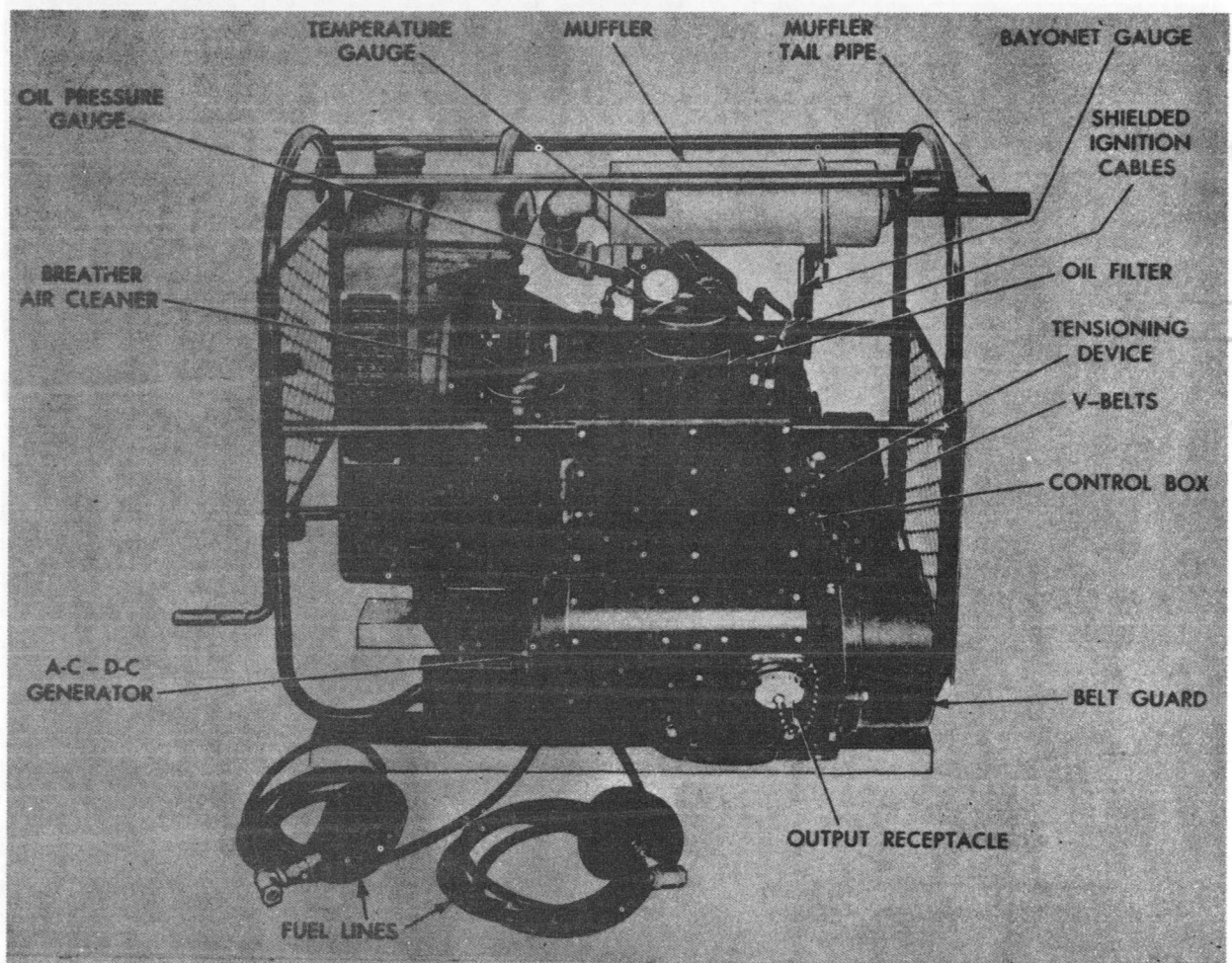
TYPE CLASSIFICATION	
DESIGN COGNIZANCE	USAF
PROCUREMENT COGNIZANCE	
STOCK NO.	

EQUIPMENT SUPPLIED DATA

QUANTITY PER EQUIPT	NAME AND NOMENCLATURE	OVERALL DIMENSIONS (inches)	WEIGHT (lbs.)
1	Power Unit PU-26/U	24 x 50 x 58-1/8	1164
1	Engine Component	24 x 33-1/2 x 35-1/2	579
1	Generator Component	22-1/2 x 24 x 50	587
1	Engine w/Accessories	24 x 30 x 30-3/4	457
1	Generator w/Exciter	16 x 16-1/8 x 25-1/8	382
1	Battery	7-1/8 x 9-3/8 x 10-3/8	53.5

MOTOR-GENERATOR SET AND GASOLINE ENGINE-GENERATOR SET

Radio-Auxiliary
PU-262/U, 263/U



Gasoline Engine-Generator Set PU-263/U

FUNCTIONAL DESCRIPTION

The PU-262/U is a complete power plant consisting of two main components, an AC motor and an AC, DC generator. The generator is driven by the motor through 3 v-belts. The power plant is intended to supply primary power for electrical communications or radar equipment requiring up to a max. of 4.25 kw of power at 115 v, single ph, 400 cps and 750 w at 27 v DC.

The PU-263/U is a manual-starting, self-contained power plant mounted on wooden skids. It consists essentially of a gasoline engine and a generator. The generator is driven through 3 v-belts. The power plant is intended to supply primary power for electrical communications or radar equipment requiring up

to a max. of 4.25 kw of power at 115 v, single ph, 400 cps, and 750 w at 27 v DC.

No field changes in effect at time of preparation (20 March 1957).

ELECTRICAL AND MECHANICAL CHARACTERISTICS

POWER OUTPUT

AC: 115 v, 4250 w, 400 cps, single ph,
two wires, 0.95 pf.

DC: 27 v, 27.8 amp.

FREQUENCY STABILITY: 400 \pm 16 cps.

VOLTAGE REGULATION.

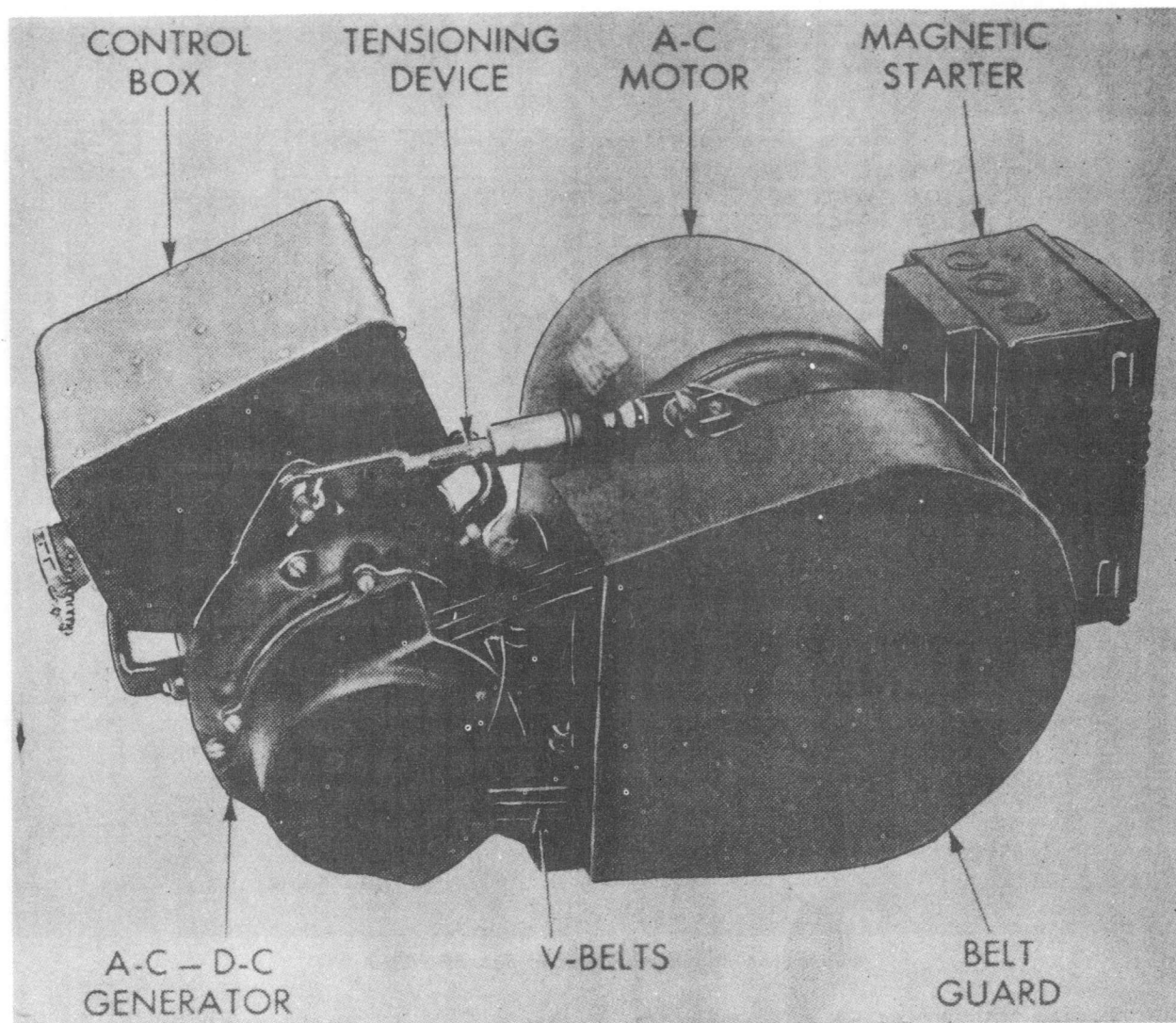
DC: 22 to 30 v.

AC: 115 \pm 5.8 v.

POWER SUPPLY CHARACTERISTIC

PU-262/U: 220 v, 3 ph at 60 cps.

MOTOR-GENERATOR SET AND GASOLINE ENGINE-GENERATOR SET



Motor-Generator Set PU-262/U

MANUFACTURER'S OR CONTRACTOR'S DATA

Homelite Corp, Port Chester, N.Y.
Contract NObsr-57338, dated 25 June 1952.
Approximate Cost: \$1660.00 with equip-
ment spares (PU-262/U).
Approximate Cost: \$2780.00 with equip-
ment spares (PU-263/U).

TUBE AND/OR CRYSTAL COMPLEMENT

No Electron Tubes.

REFERENCE DATA AND LITERATURE

NAVSHIPS 91937: Technical Manual for Motor-
Generator Set PU-262/U Gasoline Engine-
Generator Set PU-263/U.

TYPE CLASSIFICATION
DESIGN COGNIZANCE BUSHIPS
PROCUREMENT COGNIZANCE
STOCK NO.

October 1957

MOTOR-GENERATOR SET AND GASOLINE ENGINE-GENERATOR SET

Radio-Auxiliary
PU-262/U, 263/U

SHIPPING DATA

NUMBER OF BOXES	CONTENTS AND IDENTIFICATION	VOLUME (Cu.Ft.)	OVERALL DIMENSIONS (inches)	WEIGHT PACKED (lbs.)
PU-262/U				
1	Motor (with framework)	13.25	23-1/2 X 30-1/2 X 32	345
1	Generator (in-carrying case)	7.1	18-7/8 X 24-1/2 X 26-1/2	250
PU-263/U				
1	Gasoline Engine	24	26-3/4 X 37 X 42	490
1	Generator in Steel Carrying Case	7.1	18-7/8 X 24-1/2 X 26-1/2	250
1	Maintenance Parts Case	4.5	13-1/4 X 21-1/2 X 27	120

EQUIPMENT SUPPLIED DATA

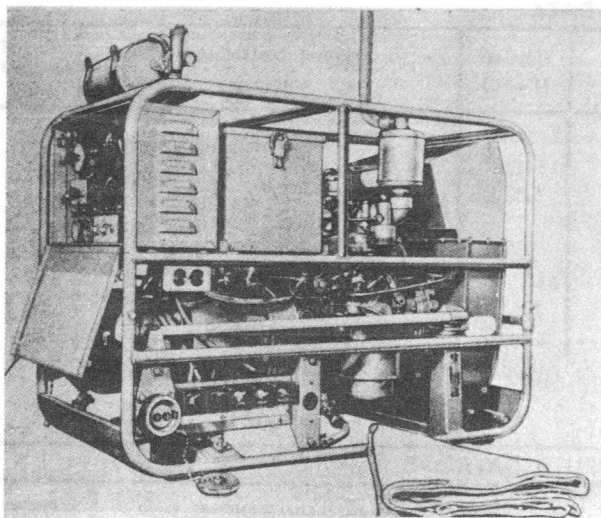
QUANTITY PER EQUIPT	NAME AND NOMENCLATURE	OVERALL DIMENSIONS (inches)	WEIGHT (lbs.)
PU-262/U			
1	AC Motor (with framework)	17-1/2 X 24 X 25-3/4	258
1	AC, DC Generator (with control box and mounting bracket)	13-1/2 X 18 X 18-3/4	140
1	Generator Carrying Case	14-7/8 X 21-1/4 X 22-1/4	56
PU-263/U			
1	Gasoline Engine (with guard rail)	20-1/4 X 32-9/16 X 35-1/4	362
1	Generator (with control box and mounting bracket)	13-1/2 X 18 X 18-3/4	140
1	Generator Carrying Case	14-7/8 X 21-1/4 X 22-1/4	56
1	Maintenance Parts	9-3/8 X 19-5/8 X 23-1/2	80

October 1957

GASOLINE ENGINE GENERATOR SET

Radio-Auxiliary

PU-286/G



Gasoline Engine Generator Set PU-286/G

HORSEPOWER: 13.3
BATTERY: 6 v.
HEAD: L.
CYLINDER: 4.
BORE: 2-5/8 in.
STROKE: 3 in.
COMPRESSION: 6.7 to 1.
DISPLACEMENT: 65 cu. in.
ALTERNATOR
TYPE: Rotating field.
POLES: 4.
WIRES: 2.
DRIVE: direct.
SPEED: 1800 rpm.
PHASE: single.
CYCLE: 60.
OUTPUT: 120 v AC.
POWER FACTOR: 0.8.
CURRENT RATING: 52.2 amp.
KILOWATT RATING: 5.
EXCITER
TYPE: rotating armature.
DRIVE: direct.
SPEED: 1800 rpm.
OUTPUT: 50 v (full load).
CURRENT RATING: 0.10 amp. (max).

FUNCTIONAL DESCRIPTION

The PU-286/G is intended primarily as a source of power for Radio Set AN/CRD-2, Radio Set AN/TRC-24, and Radar Monitoring Set AN/DPN-14. The unit may be used also to supply power to any other equipment if the load demand of the equipment does not exceed the rated capacity of the unit.

No field changes in effect at time of preparation (14 March 1957).

TUBE AND/OR CRYSTAL COMPLEMENT

No Electron Tubes.

REFERENCE DATA AND LITERATURE

TM11-940A: Technical Manual for Gasoline Engine Generator Set PU-286/G.

ELECTRICAL AND MECHANICAL CHARACTERISTICS

ENGINE

TYPE: 4 - stroke cycle.
SPEED: 1800 rpm.

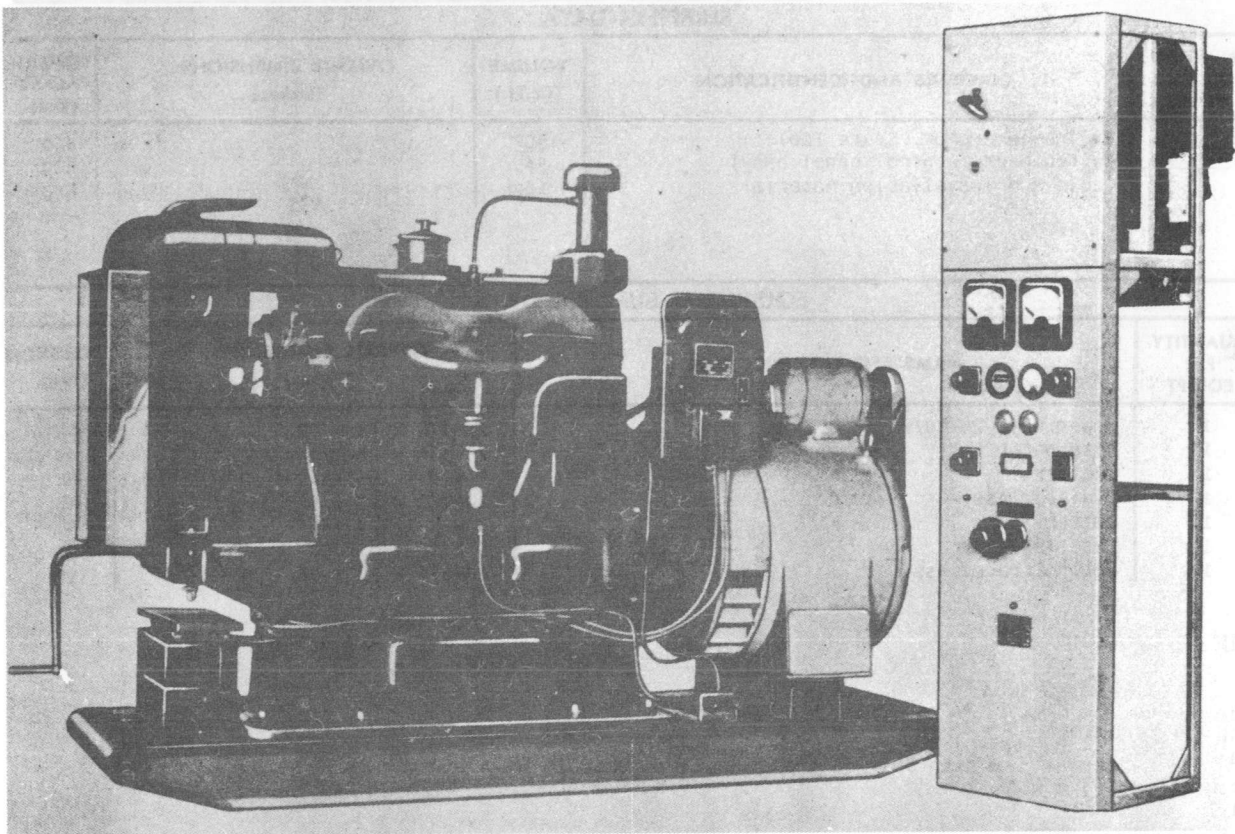
TYPE CLASSIFICATION DESIGN COGNIZANCE TASSA PROCUREMENT COGNIZANCE STOCK NO.

EQUIPMENT SUPPLIED DATA

QUANTITY PER EQUIPT	NAME AND NOMENCLATURE	OVERALL DIMENSIONS (inches)	WEIGHT (lbs.)
1	Gasoline Engine Generator Set PU-286/G consists of:		
	Engine	22 x 31 x 44	725
	Generator	20-25/32 x 21-35/64 x 24-9/16	259.5
	Condenser and Blower w/Shroud	13-7/8 x 13-7/8 x 17-9/32	183
	Control Box	12-1/2 x 19-3/4 x 28	40.5
	Tubular Frame	8-5/16 x 11-5/16 x 17-15/16	34
	Battery	22 x 31 x 44	63.5
1	Set of Tools	7 x 8-1/4 x 10-9/32	36
1	Set Installation Equipment		
1	Set Spare Parts		
1	Set Miscellaneous Equipment		

POWER UNIT

PU-30/F



Power Unit PU-30/F

FUNCTIONAL DESCRIPTION

The PU-30/F is a gasoline-engine-driven electrical generating set with an output of 15 kw, 18.75 kva, 80% pf 120/240 v, 60 cycles. The generator is directly connected to the engine and both engine and generator operate at a speed of 1200 rpm. The entire assy including engine, generator, radiator, starting battery, and engine instrument panel, is mounted on a structural steel base.

No field changes in effect at time of preparation (12 March 1957).

ELECTRICAL AND MECHANICAL CHARACTERISTICS**ENGINE**

TYPE: four-cylinder, four cycle, vertical.
CYLINDER BORE: 4-5/8 in.
STROKE: 6 in.
HORSEPOWER: 60.

GOVERNED SPEED: 12000 rpm.
ALTERNATOR
OUTPUT: 15 kw, 18.75 kva, 120/240 v, 78
amp, single phase, 60 cycle.
POWER FACTOR: 80%.
TEMPERATURE RISE: 40 deg C.

TUBE AND/OR CRYSTAL COMPLEMENT

No Electron Tubes.

REFERENCE DATA AND LITERATURE

TM11-944: Technical Manual for Power Unit
PU-30/F.

TYPE CLASSIFICATION
DESIGN COGNIZANCE TASSA
PROCUREMENT COGNIZANCE
STOCK NO.

October 1957

Radio-Auxiliary

PU-30/F

POWER UNIT

SHIPPING DATA

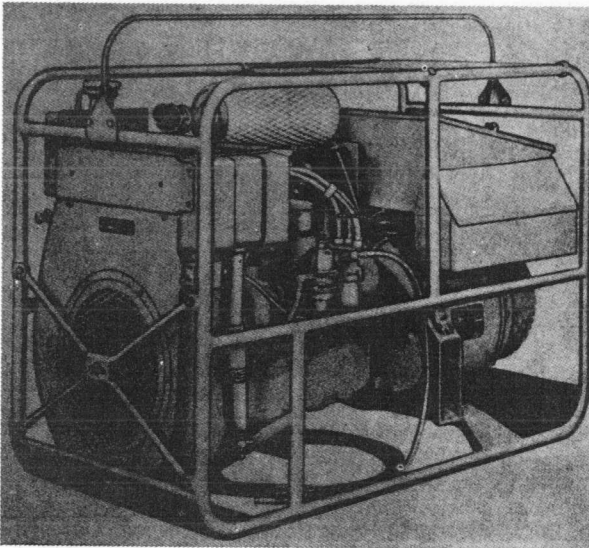
NUMBER OF BOXES	CONTENTS AND IDENTIFICATION	VOLUME (Cu.Ft.)	OVERALL DIMENSIONS (inches)	WEIGHT PACKED (lbs.)
1	Engine-generator, Spare Tools	150		4650
1	Switchboard (control panel assy)	36		500
1	Cable and Installation Material	16		650

EQUIPMENT SUPPLIED DATA

QUANTITY PER EQUIP	NAME AND NOMENCLATURE	OVERALL DIMENSIONS (inches)	WEIGHT (lbs.)
1	Power Unit PU-30/F	26-1/2 x 61 x 90	3600
1	Alternator	23-3/4 x 25-1/4 x 26	969
1	Exciter	9 x 9 x 15-3/4	84
1	Radiator Assy	20-1/2 x 22-1/4 x 35-3/4	218
1	Battery	7 x 8-1/2 x 16	84
1	Base Assy	6 x 26-1/4 x 90	380
1	Control Panel Assy	18-1/4 x 20 x 76	310

POWER UNIT

PU-32/C



Power Unit PU-32/C

FUNCTIONAL DESCRIPTION

The PU-32/C is a complete electric generating plant. It consists of a gasoline engine and an alternating current generator, with the necessary accessories and controls, all mounted in a tubular metal frame with a skid base. The generator delivers 5 kw at 60 cps AC.

No field changes in effect at time of preparation (13 March 1957).

ELECTRICAL AND MECHANICAL CHARACTERISTICS

ENGINE

TYPE: Four-cylinder, L-head, water-cooled
 HORSEPOWER: 13.5.

OPERATING SPEED: 1800 rpm.

FUEL CONSUMPTION: 1-1/4 gal per hour.

GENERATOR

OUTPUT: 120 v, single ph, two wires; 208
 or 120 v, three ph, three or four wire.

RATED CAPACITY: 5 kw (6.25 kva at 0.8
 power factor).

TUBE AND/OR CRYSTAL COMPLEMENT

No Electron Tubes.

REFERENCE DATA AND LITERATURE

TM11-960: Technical Manual for Power Unit
 PU-32/C.

TYPE CLASSIFICATION
DESIGN COGNIZANCE TASSA
PROCUREMENT COGNIZANCE
STOCK NO.

EQUIPMENT SUPPLIED DATA

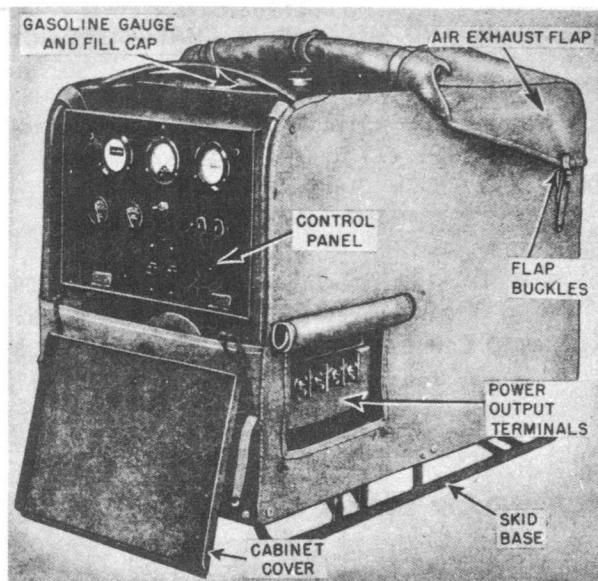
QUANTITY PER EQUIPT	NAME AND NOMENCLATURE	OVERALL DIMENSIONS (inches)	WEIGHT (lbs.)
1	Power Unit PU-32/C	23-3/4 x 35 x 44	600
1	Engine w/Accessories	19-1/2 x 24-3/4 x 26	240
1	Generator w/Adapter Ring	14 x 14-1/4 x 17	220
1	Control Panel Assy	11-3/4 x 17-3/4 x 21	35
1	Radiator Assy	10 x 10 x 19-1/2	19
2	Tool and Spare Parts Box	5 x 7-3/4 x 15-3/4	5
1	Frame and Cover	22 x 35 x 45	54

October 1957

Radio-Auxiliary

POWER UNIT

PU-35/U



Power Unit PU-35/U

CYLINDER: 4.
 HEAD: L.
 SPEED: 1714 rpm.
 HORSEPOWER: 14.
 PISTON DISPLACEMENT: 64.9 cu. in.
 BORE: 2-5/8 in.
 STROKE: 3 in.
 ALTERNATOR
 PHASE: Single.
 TYPE: 400 cycle, permanent magnet and 60 cycle, self-excited.
 RATED: 2-1/2 kva.
 VOLT: 120 v.

TUBE AND/OR CRYSTAL COMPLEMENT

No Electron Tubes.

REFERENCE DATA AND LITERATURE

TM11-975: Technical Manual for Power Unit PU-35/U.

FUNCTIONAL DESCRIPTION

The PU-35/U is a complete 120 v, combination 60 and 400 cycle electric generating plant. It consists of an engine and two AC generators with the necessary controls.

No field changes in effect at time of preparation (18 March 1957).

ELECTRICAL AND MECHANICAL CHARACTERISTICS

ENGINE

TYPE: 4 cycle.

TYPE CLASSIFICATION
 DESIGN COGNIZANCE TASSA
 PROCUREMENT COGNIZANCE
 STOCK NO.

EQUIPMENT SUPPLIED DATA

QUANTITY PER EQUIPT	NAME AND NOMENCLATURE	OVERALL DIMENSIONS (inches)	WEIGHT (lbs.)
1	Power Unit PU-35/U	21 X 32-1/2 X 46-1/4	585

8 January 1962

GENERATOR SET, DIESEL ENGINE PU-383/M

Cog Service:

FSN:

Functional Class:

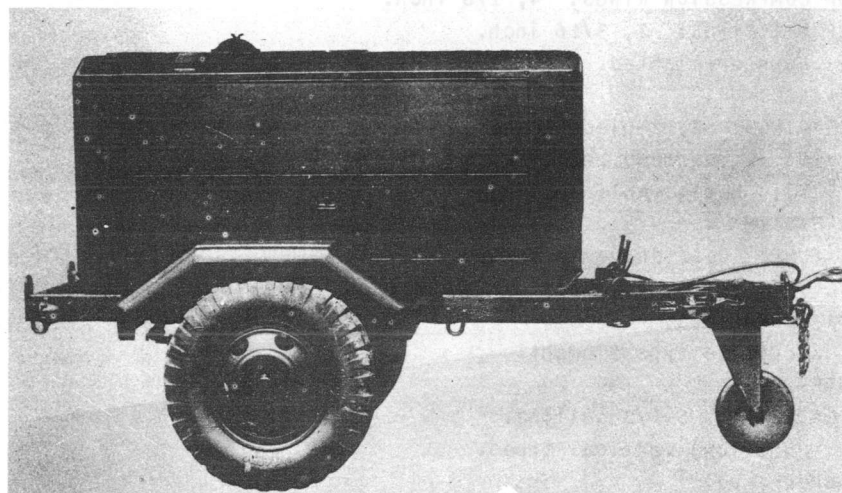
USA

USN

USAF

TYPE CLASS:

MANUFACTURER'S NAME/CODE NUMBER: Libby Welding Company, Incorporated.



Generator Set, Diesel Engine PU-383/M

FUNCTIONAL DESCRIPTION:

The PU-383/M is designed as a complete self-contained mobile power source. It is a general-purpose unit, mounted on a standard 1-1/2 ton, 2-wheel trailer chassis and is intended for operation as an independent power source for various electronic equipment. The generator set provides a 60-cycle alternating current at 0.80 power factor and is rated as follows: (1) 40 kw, 120 and 208 volt, 3 phase, 4 wire (Wye); (2) 40 kw, 240 and 416 volt, 3 phase, 4 wire (Wye); (3) 40 kw, 120 or 240 volt, 3 phase, 3 wire (Delta); (4) 30 kw, 120 or 240 volt, 1 phase, 2 wire.

No field changes in effect at time of preparation (19 July 1961).

TECHNICAL CHARACTERISTICS:

ENGINE DATA

MODEL: 3913.

PU-383/M GENERATOR SET, DIESEL ENGINE

TYPE: (2-cycle).
NUMBER OF CYLINDERS: 3.
BORE: 4-1/4 inches.
STROKE: 5 inches.
TOTAL DISPLACEMENT: 213 cubic inches.
DIRECTION OF CRANKSHAFT ROTATION VIEWED FROM FAN END: Clockwise.
SPEED RANGE: 350 to 2000 rpm.
HORSEPOWER: 65 hp.
COMPRESSION RATIO: 17 to 1.
COMPRESSION PRESSURE (400 rpm): 450 psi.
INJECTOR RATING: 80 cubic millimeters.

PISTONS

NUMBER OF COMPRESSION RINGS: 4, 1/8 inch.
NUMBER OF OIL RINGS: 2, 3/16 inch.
CRANKSHAFT: Counterweighted.
MAIN BEARINGS: 4.
THURST BEARINGS: 2, 2-piece washers.
EXHAUST VALVES: 2 overhead per cylinder.
SEAT INSERTS: Replaceable castings.

LUBRICATION SYSTEM

PRESSURE PUMP: Gear driven gear type.
SUMP: Wet.
CAPACITY: 16 quarts.
FILTER: Cartridge type element.

COOLING SYSTEM

COOLANT CAPACITY: 5-1/2 gallons.
RADIATOR: Uniflow, vertical tubes.
FAN: Pusher type.
WATER PUMP: Centrifugal type.

AIR INTAKE SYSTEM

BLOWER: Roots type, 3-lobed helical rotor.
AIR CLEANER: Oil bath type.

FUEL SYSTEM

TRANSFER PUMP: Gear type.
STRAINER: Full flow, cartridge type element.
FILTER: Full flow, cartridge filter type element.
TANK CAPACITY: 32 gallons.
GOVERNOR: Constant speed isochronous, hydraulic type.

MANUFACTURER: Massey Machine Co.

MODEL: Type E.

ELECTRICAL (DC) SYSTEM: 24 volt.

GENERATOR, BATTERY CHARGING: 24 v, belt driven.

STARTING MOTOR: 24 v solenoid operated.

BATTERIES: 2, 12 v, series connected.

ALTERNATING CURRENT GENERATOR

MANUFACTURER: Kato Engineering Company.

ALTERNATOR

MODEL: 57 MPX4.

TYPE: 5327.

GENERATOR SET, DIESEL ENGINE PU-383/M

RATING: 40 kw, 50 kva.
FREQUENCY: 60 cps at 1800 rpm.
POWER FACTOR: 0.80% Pf.

EXCITER

MODEL: 30XUG1.
TYPE: 5089.
FIELD WINDING: Shunt.
TEMPERATURE RISE: 104 deg F (40 deg C).
MAXIMUM AMBIENT OPERATING TEMPERATURE: 120 deg F (49 deg C).

RELATION TO OTHER EQUIPMENT: None.

EQUIPMENT REQUIRED BUT NOT SUPPLIED: None.

MAJOR COMPONENTS

QTY	ITEM	STOCK NUMBERS	DIMENSIONS (INCHES)	WEIGHT (LBS)
1	Generator Set, Diesel Engine PU-383/M consists of:		82-1/4 x 82-1/2 x 163	3500
3	Ammeter			
1	Air Cleaner			
1	Circuit Breaker			
1	Oil Pressure Gauge			
1	Water Temperature Gauge			
1	Generator			
1	Battery Charger (24 V DC)			
1	Engine Governor			
1	Frequency Meter			
1	Muffler			
1	Voltmeter ac			
1	Radiator			
1	Voltage Regulator dc			
1	Voltage Regulator ac			

REFERENCE DATA AND LITERATURE:

NAVSHIPS 93020: Technical Manual for Generator Set, Diesel Engine PU-383/M.

TUBE, CRYSTAL AND/OR SEMI-CONDUCTOR DATA:

TUBES: None used.

CRYSTALS: None used.

SEMI-CONDUCTORS: None used.

PU-383/M GENERATOR SET, DIESEL ENGINE

SHIPPING DATA

PKGS VOLUME (CU FT) WEIGHT (LBS)

PROCUREMENT DATA

PROCURING SERVICE:
SPEC &/OR DWG: MIL-G-18050

DESIGN COG: Marine Corps

CONTRACTOR	LOCATION	CONTRACT OR ORDER NO.	APPROX. UNIT COST
Libby Welding Co., Incorp. Model LW 40 A	Kansas City, Mo.	N0m-69495	

10 January 1962

GENERATOR SET, DIESEL ENGINE PU-383A/M

Cog Service:

FSN: 6115-474-0370

Functional Class:

USA

USN

USAF

TYPE CLASS:

MANUFACTURER'S NAME/CODE NUMBER: Stewart & Stevenson Services Incorporated.

(No Illustration Available)

FUNCTIONAL DESCRIPTION:

The Generator Set, Diesel Engine PU-383A/M is a completely self-contained mobile power source. It is a general-purpose unit, mounted on a standard 1-1/2 ton, 2-wheel trailer chassis and is intended for operation as an independent power source for various electronic equipment. The generator set provides a 60-cycle alternating current at 0.80 power factor and is rated as follows: (1) 40 kw, 120 and 208 volt, 3 phase, 4 wire (Wye); (2) 40 kw, 240 and 416 volt, 3 phase, 4 wire (Wye); (3) 40 kw, 120 and 240 volt, 3 phase, 3 wire (Delta); (4) 30 kw, 120 and 240 volt, 1 phase, 2 wire.

No field changes in effect at time of preparation (24 July 1961).

TECHNICAL CHARACTERISTICS:

TYPE OF MOUNTING: Trailer mounted.

ENGINE DATA

NUMBER OF CYLINDERS: 3.

BORE: 4-1/4 inches.

STROKE: 5 inches.

TOTAL DISPLACEMENT: 213 cubic inches.

DIRECTION OF CRANKSHAFT ROTATION VIEWED FROM FAN END: Clockwise.

SPEED RANGE: 350 to 2000 rpm.

HORSEPOWER: 65 hp.

COMPRESSION RATIO (NOMINAL): 17 to 1.

COMPRESSION PRESSURE (400 RPM): 450 psi.

INJECTION RATING: 80 cubic millimeters.

PISTONS

NUMBER OF COMPRESSION RINGS: 4, 1/8 inch.

NUMBER OF OIL RINGS: 2, 3/16 inch.

CRANKSHAFT: Counterweighted.

MAIN BEARINGS: 4.

THRUST BEARINGS: 2, 2-piece washers.

EXHAUST VALVES: 2 overhead per cylinder.

SEAT INSERTS: Replaceable castings.

LUBRICATION SYSTEM

PRESSURE PUMP: Gear driven, gear type.

SUMP: Wet.

CAPACITY: 16 quarts.

FILTER: Cartridge element.

COOLING SYSTEM

COOLING CAPACITY: 5-1/2 gallons.

PU-383A/M GENERATOR SET, DIESEL ENGINE

RADIATOR: Uniflow, vertical tubes.

FAN: Pusher type.

WATER PUMP: Centrifugal type.

AIR INTAKE SYSTEM

BLOWER: Roots type, 3-lobed helical rotor.

AIR CLEANER: Oil bath type.

FUEL SYSTEM

TRANSFER PUMP: Gear type.

STRAINER: Full flow, cartridge type element.

FILTER: Full flow, cartridge filter type.

TANK CAPACITY: 32 gallons.

GOVERNOR: Constant speed isochronous, hydraulic type.

MANUFACTURER: Massey Machine Company.

MODEL: Type E.

ELECTRICAL (DC) SYSTEM: 24 volt.

GENERATOR, BATTERY CHARGING: 24 volt, belt driven.

STARTING MOTOR: 24 volt solenoid operated.

BATTERIES: 2, 12 v.

ALTERNATING-CURRENT GENERATOR

ALTERNATOR

MODEL: 57MPX4.

TYPE: 5327.

RATING: 40 kw, 50 kva.

FREQUENCY: 60 cps at 1800 rpm.

POWER FACTOR: 0.80.

EXCITER

MODEL: 30XUG1.

TYPE: 5089.

FIELD WINDING: Shunt.

RELATION TO OTHER EQUIPMENT:

The PU-383A/M is electrically and mechanically interchangeable with PU-383/M, except manufacturer's parts differ.

EQUIPMENT REQUIRED BUT NOT SUPPLIED: None.

MAJOR COMPONENTS

QTY	ITEM	STOCK NUMBERS	DIMENSIONS (INCHES)	WEIGHT (LBS)
1	Generator Set, Diesel Engine PU-383A/M consists of:		82-1/4 x 82-1/2 x 163	3500
3	Ammeter			
1	Air Cleaner			
1	Circuit Breaker			
1	Oil Pressure Gauge			
1	Generator			

GENERATOR SET, DIESEL ENGINE PU-383A/M

QTY	ITEM	STOCK NUMBERS	DIMENSIONS (INCHES)	WEIGHT (LBS)
1	Battery Charger (24 v dc)			
1	Engine Governor			
1	Frequency Meter			
1	Muffler			
1	Voltmeter AC			
1	Radiator			
1	Voltage Regulator DC			
1	Voltage Regulator AC			
1	Water Temperature Gauge			

REFERENCE DATA AND LITERATURE:

NAVSHIPS 93020: Technical Manual for Generator Set, Diesel Engine PU-383/M.
 NAVSHIPS 93400: Preliminary Data Form for Generator Set Diesel Engine PU-383A/M.

TUBE, CRYSTAL AND/OR SEMI-CONDUCTOR DATA:

TUBES: None used.

CRYSTALS: None used.

SEMI-CONDUCTORS: None used.

SHIPPING DATA

PKGS	VOLUME (CU FT)	WEIGHT (LBS)
------	----------------	--------------

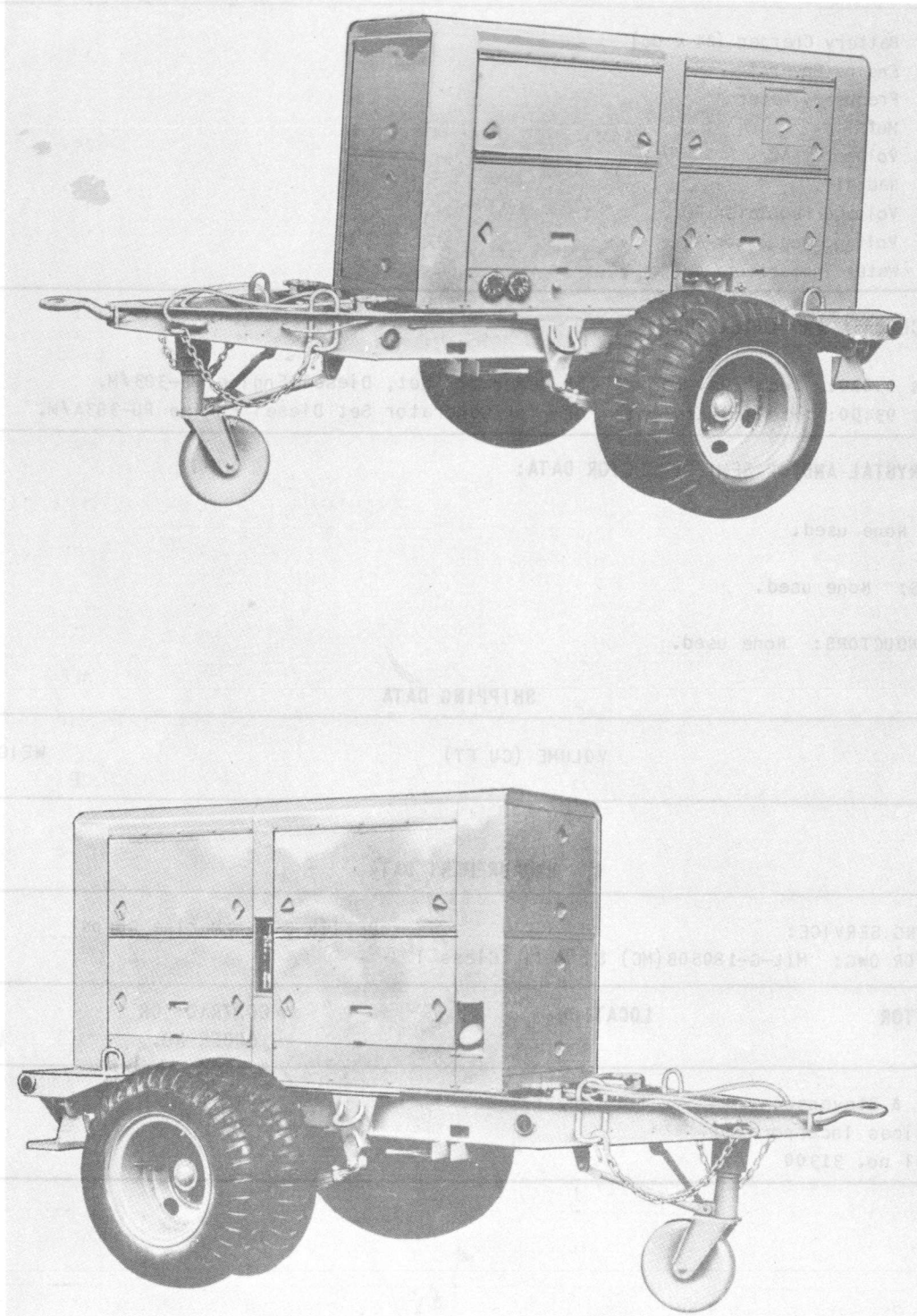
PROCUREMENT DATA

PROCURING SERVICE: DESIGN COG: Marine Corps
 SPEC &/OR DWG: MIL-G-18050B(MC) Size II, Class I

CONTRACTOR	LOCATION	CONTRACT OR ORDER NO.	APPROX. UNIT COST
Stewart & Stevenson Services Incorporated Model no. 31300	Houston, Texas	N0m-71123	

GENERATOR SET, DIESEL ENGINE

Radio-Auxiliary
PU-390/G



Generator Set, Diesel Engine PU-390/G

Radio-Auxiliary

PU-390/G

GENERATOR SET, DIESEL ENGINE

FUNCTIONAL DESCRIPTION

Generator Sets, Diesel Engine PU-390/G is a completely self-contained, mobile, automatic starting source of electrical power for standby or emergency use.

No field changes in effect at time of preparation (21 January 1960).

ELECTRICAL AND MECHANICAL CHARACTERISTICS

ENGINE

MAKE: Detroit Diesel Div General Motors Corp.

MODEL: 4913, series 4-71.

TYPE: Diesel (2 cy).

NUMBER OF CYLINDERS: 4.

BORE: 4-1/4 in.

STROKE: 5 in.

TOTAL DISPLACEMENT: 283.7 cu. in.

CRANKSHAFT ROTATION VIEWED FROM FAN END: Clockwise.

SPEED RANGE: 350 to 2000 rpm.

H.P. CONTINUOUS-1800 RPM: 93 hp.

COMPRESSION RATIO: 17 to 1 (nominal).

COMPRESSION PRESSURE AT 400 RPM: 420 psi.

FIRING ORDER: 1-3-4-2.

INJECTOR PUMP: Unit injector combined with plunger and spray nozzle for each cylinder.

INJECTOR RATING: 80 cu. millimeters.

LUBRICATION SYSTEM

PRESSURE PUMP: Gear driven, Gear type.

SUMP: Wet.

CAPACITY: 17 qts.

FILTER: By pass, cartridge type element.

AC GENERATOR

MAKE: American MARC Inc.

MODEL: KBA 660.

ALTERNATOR

TYPE: 60-cy, 60 kw.

RATING: 240 or 416 v line to line.

EXCITER: Static type.

TEMPERATURE RISE: 104° F (40° C).

AMBIENT TEMPERATURE: 125° F (51.7° C) max.

VOLTAGE REGULATOR: American MARC No. 102550.

COOLING SYSTEM

WATER CAPACITY: 8 gal.

FAN: Pusher type.

WATER PUMP: Centrifugal type.

AIR INTAKE SYSTEM

BLOWER: Rotor type, three-lobed helical rotor.

AIR CLEANER: Oil bath type.

FUEL SYSTEM.

TRANSFER PUMP: Gear type.

TANK CAPACITY: 53 gal.

FULL LOAD RUNNING TIME: 8 hr.

GOVERNOR: Constant speed isochronous hydraulic, Massey Machine type E.

ELECTRICAL SYSTEM (DC)

GENERATOR, BATTERY CHARGING: 24 v belt-driven.

STARTING MOTOR: 24 v solenoid operated.

MANUFACTURER'S OR CONTRACTOR'S DATA

Stewart and Stevenson Services Inc.,
Houston, Texas.
Model No. 26800.
Contract NOM-70708.

TUBE AND/OR CRYSTAL COMPLIMENT

No Electron Tubes or Crystals used.

REFERENCE DATA AND LITERATURE

NAVSHIPS 93308: Technical Manual for 60KW-AC Generator Set Diesel-Engine PU-390/G.

TYPE CLASSIFICATION (NAVY)
DESIGN COGNIZANCE USN, BUSHIPS
PROCUREMENT COGNIZANCE SPEC: MIL-G-10327(CE) TYPE II, CLASS A
STOCK NO.
R.D.B. IDENT. NO.

EQUIPMENT SUPPLIED DATA

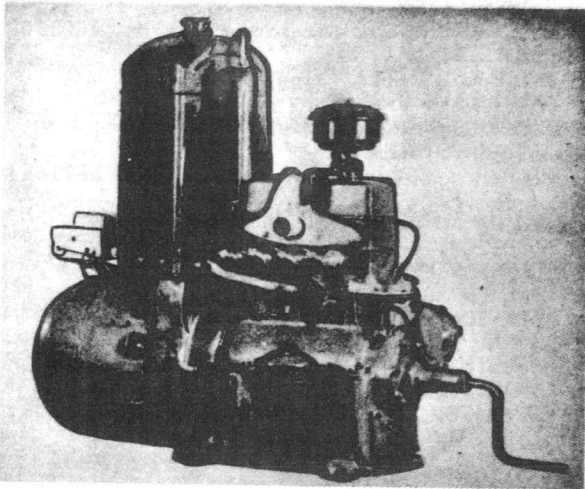
QUANTITY PER EQUIPT	NAME AND NOMENCLATURE	OVERALL DIMENSIONS (inches)	WEIGHT (lbs.)
1	Generator Set, Diesel Engine PU-390/G Includes:	89 X 93 X 163-1/8	7160
1	Trailer	40 X 93 X 163-1/8	2340
1	Generator Set	36 X 60 X 101	4820

October 1957

Radio-Auxiliary

POWER UNIT

PU-41/G



Power Unit PU-41/G

GENERATOR

TYPE: AC revolving armature.
 RATING: 1.5 kw.
 VOLTAGE: 110 v.
 CURRENT: 13.6 amp.
 CYCLE: 60 cps.
 PHASE: Single.
 POWER FACTOR: 100%.
 WIRES: 2.
 SPEED: 1200 rpm.
 DRIVE: Direct.

MANUFACTURER'S OR CONTRACTOR'S DATA

Kohler Co, Kohler, Wis.

TUBE AND/OR CRYSTAL COMPLEMENT

No Electron Tubes.

REFERENCE DATA AND LITERATURE

TM11-223: Technical Manual for Signal Equipment Directory, Power Units.

FUNCTIONAL DESCRIPTION

The PU-41/G is an electric generating set consisting of a 4 cylinder, 4 cycle, valve-in-head, liquid-cooled, manual-starting gasoline engine directly connected to an AC generator of the revolving armature type.

No field changes in effect at time of preparation (5 April 1957).

ELECTRICAL AND MECHANICAL CHARACTERISTICS

ENGINE

TYPE: 4 cycle.
 CYLINDERS: 4.
 BORE: 2 in.
 STROKE: 3 in.
 HEAD: Valve-in-head.
 HORSEPOWER: 4.25 at 1200 rpm.
 COMPRESSION RATIO: 5.5 to 1.
 SPEED: 1200 rpm.
 FUEL USED: Gasoline.
 STARTING: manual (crank).
 IGNITION: Magneto.

TYPE CLASSIFICATION
 DESIGN COGNIZANCE TASSA
 PROCUREMENT COGNIZANCE
 STOCK NO.

SHIPPING DATA

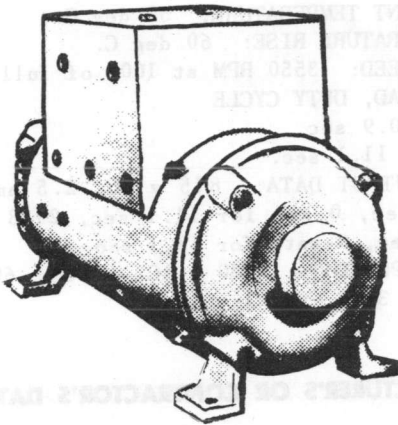
NUMBER OF BOXES	CONTENTS AND IDENTIFICATION	VOLUME (Cu.Ft.)	OVERALL DIMENSIONS (inches)	WEIGHT PACKED (lbs.)
1	Power Unit PU-41/G			880

EQUIPMENT SUPPLIED DATA

QUANTITY PER EQUIP	NAME AND NOMENCLATURE	OVERALL DIMENSIONS (inches)	WEIGHT (lbs.)
1	Power Unit PU-41/G	16 x 36 x 45	497

June 1961

PU-477/SQ

MOTOR-GENERATOR

Motor Generator PU-477/SQ

FUNCTIONAL DESCRIPTION

The PU-477/SQ is used in place of motor generator PU-445. It is designed to provide field excitation voltage for motor generators PU-478/SQ and PU-479/SQ and PU-461/SQ.

No field changes in effect at time of preparation (22 August 1960).

RELATION TO OTHER EQUIPMENT

The PU-477/SQ is designed as part of the AN/SQS-28.

ELECTRICAL AND MECHANICAL CHARACTERISTICS**TEMPERATURE DATA**

AMBIENT TEMPERATURE: 50 deg C.

TEMPERATURE RISE: 60 deg C.
 PULSE LOAD, DUTY CYCLE: 1.9 sec 10 amp load;
 10.1 sec 5 amp load.
 RATED SPEED: 3550 rpm at 100% of full load.
 RATED OUTPUT DATA: 200 v dc, 10 amp for 1.9
 sec, 5 amp for 10.1 sec, 2000 W for 1.9
 sec, 100 W for 10.1 sec.
 RATED INPUT DATA: 440 vac, 4.5 amp, 60 cps,
 3 ph, 3420 kva, 3-wires.

MANUFACTURER'S OR CONTRACTOR'S DATA

Sangamo Electric Co., Springfield, Illi-
 nois.
 Part/Spec No. 825887.
 Contract NObsr-81269.

TUBE AND/OR CRYSTAL COMPLEMENT

No Electron Tubes and/or Crystals used.

REFERENCE DATA AND LITERATURE

NAVSHIPS 93624: Technical Manual for Trans-
 mitter Power Supply including: Motor Gen-
 erators; PU-444/SQ, PU-445/SQ, PU-461/SQ,
 PU-477/SQ, PU-478-SQ, PU-479/SQ, and PU-
 485/SQ.

TYPE CLASSIFICATION (NAVY)
 DESIGN COGNIZANCE NAVY BUSHIPS
 PROCUREMENT COGNIZANCE
 STOCK NO.
 R.D.B. IDENT. NO.

SHIPPING DATA

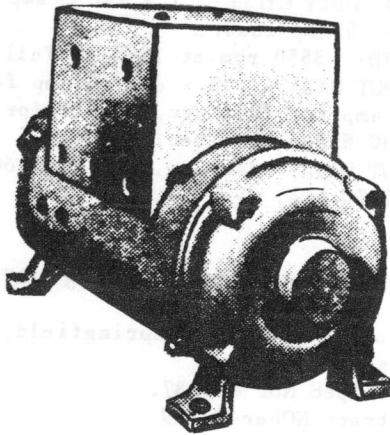
NUMBER OF BOXES	CONTENTS AND IDENTIFICATION	VOLUME (Cu.Ft.)	OVERALL DIMENSIONS (inches)	WEIGHT PACKED (lbs.)
1	Motor-Generator PU-477/SQ	8.7	17 x 22 x 40	245

EQUIPMENT SUPPLIED DATA

QUANTITY PER EQUIP	NAME AND NOMENCLATURE	OVERALL DIMENSIONS (inches)	WEIGHT (lbs.)
1	Motor-Generator PU-477/SQ	11-1/2 x 16-3/16 x 34-7/8	120

June 1961

Radio-Auxiliary

MOTOR-GENERATOR**PU-478/SQ**

Motor-Generator PU-478/SQ

FUNCTIONAL DESCRIPTION

The PU-478/SQ is designed as a screen voltage generator. It supplies voltage to the screen circuit of a sonar transmitter. Two machines are used in each installation.

No field changes in effect at time of preparation (22 August 1960).

RELATION TO OTHER EQUIPMENT

The PU-478/SQ is designed as part of the Sonar Detecting-Ranging Set AN/SQS-23.

ELECTRICAL AND MECHANICAL CHARACTERISTICS**TEMPERATURE DATA**

AMBIENT TEMPERATURE: 50 deg C.
 TEMPERATURE RISE: 60 deg C.
 RATED SPEED: 3550 RPM at 100% of full load.
 PULSE LOAD, DUTY CYCLE
 ON: 0.9 sec.
 OFF: 11.1 sec.
 RATED OUTPUT DATA: 875 v DC, 2.5 amp for 0.9 sec, 0 amp for 11.1 sec, 2188 W for 0.9 sec, 0-watt for 11.1 sec.
 RATED INPUT DATA: 440 v AC, 4.5 amp, 60 cps, 3 ph, 3420 kva, 3-wires.

MANUFACTURER'S OR CONTRACTOR'S DATA

Sangamo Electric Co., Springfield, Illinois.

Part/Spec No. 825888.

Contract NObsr-81269.

TUBE AND/OR CRYSTAL COMPLEMENT

No Electron Tubes and/or Crystals used.

REFERENCE DATA AND LITERATURE

NAVSHIPS 93624: Technical Manual for Transmitter Power Supply including: Motor Generators: PU-444/SQ, PU-445/SQ, PU-461/SQ, PU-477/SQ, PU-478/SQ, PU-479/SQ, and PU-485/SQ.

TYPE CLASSIFICATION (NAVY)
 DESIGN COGNIZANCE NAVY BUSHIPS
 PROCUREMENT COGNIZANCE
 STOCK NO.
 R.D.B. IDENT. NO.

SHIPPING DATA

NUMBER OF BOXES	CONTENTS AND IDENTIFICATION	VOLUME (Cu.Ft.)	OVERALL DIMENSIONS (inches)	WEIGHT PACKED (lbs.)
1	Motor-Generator PU-478/SQ	8.7	17 x 22 x 40	245

UNCLASSIFIED

1.2 PU-478/SQ: 1

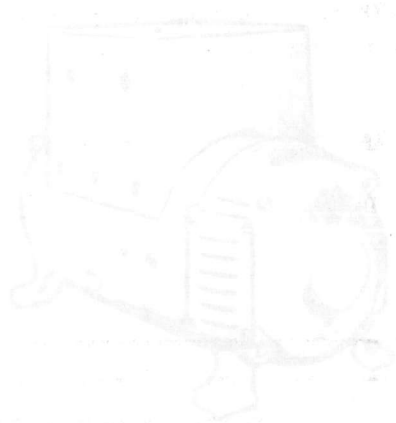
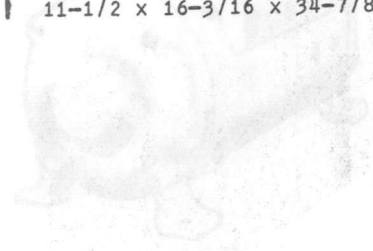
Radio-Auxiliary

PU-478/SQ

MOTOR-GENERATOR

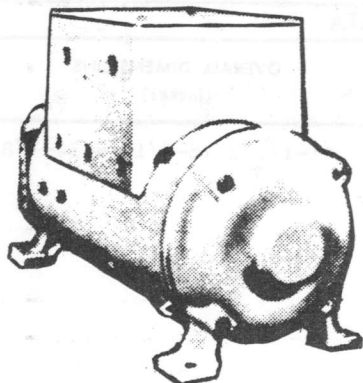
EQUIPMENT SUPPLIED DATA

QUANTITY PER EQUIPT	NAME AND NOMENCLATURE	OVERALL DIMENSIONS (inches)	WEIGHT (lbs.)
2	Motor-Generator PU-478/SQ	11-1/2 x 16-3/16 x 34-7/8	120



June 1961

Radio-Auxiliary

MOTOR-GENERATOR**PU-479/SQ****FUNCTIONAL DESCRIPTION**

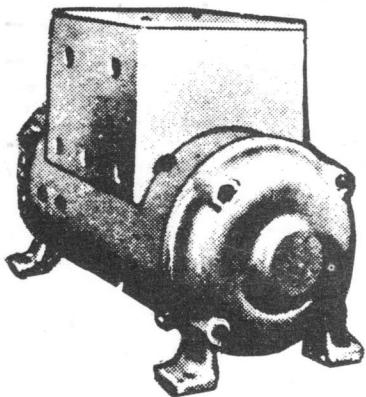
The PU-479/SQ is designed as a P325 volt Direct Current (DC) generator that is used in conjunction with motor generator PU-478/SQ to form the screen and P325 volt supplies of a sonar transmitter. It is used in later installations in place of the PU-444/SQ motor generator.

No field changes in effect at time of preparation (22 August 1960).

RELATION TO OTHER EQUIPMENT

The PU-479/SQ is designed as part of the Sonar Detecting-Ranging Set AN/SQS-23.

The PU-479/SQ is designed to be used with the PU-478/SQ motor generator.

**ELECTRICAL AND MECHANICAL CHARACTERISTICS****TEMPERATURE DATA**

AMBIENT TEMPERATURE: 50 deg C.

TEMPERATURE RISE: 60 deg C.

PULSE LOAD, DUTY CYCLE

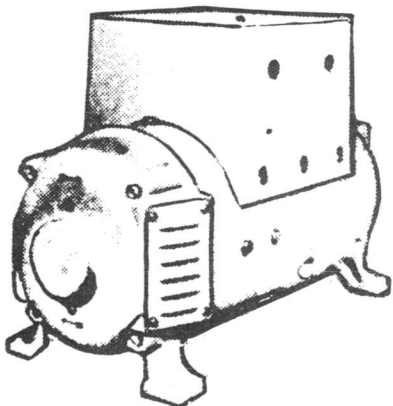
ON: 0.9 sec.

OFF: 11.1 sec.

RATED SPEED: 3550 rpm at 100% of full load.

RATED OUTPUT DATA: 325 v dc, 3 amp for 0.9 sec, 1 amp for 11.1 sec, 975 W for 0.9 sec, 325 W for 11.1 sec.

RATED INPUT DATA: 440 v ac, 60 cps, 4.5 amp, 3 ph, 3420 kva, 3-wires.

**MANUFACTURER'S OR CONTRACTOR'S DATA**

Sangamo Electric Co. Springfield, Illinois.

Part/Spec No. 825889.

Contract NObsr-81269.

TUBE AND/OR CRYSTAL COMPLEMENT

No Electron Tubes and/or Crystals used.

Motor Generator PU-479/SQ

Radio-Auxiliary

PU-479/SQ

MOTOR-GENERATOR

REFERENCE DATA AND LITERATURE

NAVSHIPS 93624: Technical Manual for Transmitter Power Supply including: Motor-Generators: PU-444/SQ, PU-445/SQ, PU-461/SQ, PU-477/SQ, PU-478/SQ, PU-479/SQ and PU-485/SQ.

TYPE CLASSIFICATION (NAVY)
 DESIGN COGNIZANCE NAVY BUSHIPS
 PROCUREMENT COGNIZANCE
 STOCK NO.
 R.D.B. IDENT. NO.

SHIPPING DATA

NUMBER OF BOXES	CONTENTS AND IDENTIFICATION	VOLUME (Cu.Ft.)	OVERALL DIMENSIONS (inches)	WEIGHT PACKED (lbs.)
1	Motor-Generator PU-479/SQ	8.7	17 x 22 x 40	245

EQUIPMENT SUPPLIED DATA

QUANTITY PER EQUIPT	NAME AND NOMENCLATURE	OVERALL DIMENSIONS (inches)	WEIGHT (lbs.)
2	Motor-Generator PU-479/SQ	11-1/2 x 16-3/16 x 34-7/8	120

TYPE CLASSIFICATION
 DESIGN COGNIZANCE
 PROCUREMENT COGNIZANCE
 STOCK NO.

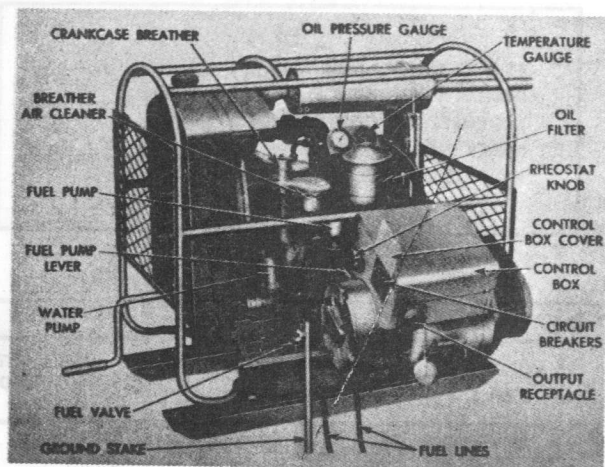
EQUIPMENT SUPPLIED DATA

QUANTITY PER EQUIPT	NAME AND NOMENCLATURE	OVERALL DIMENSIONS (inches)	WEIGHT (lbs.)
2	Motor-Generator PU-479/SQ	11-1/2 x 16-3/16 x 34-7/8	120

October 1957

Radio-Auxiliary
PU-51/TPS-1B

POWER UNIT



ELECTRICAL AND MECHANICAL CHARACTERISTICS

ENGINE

TYPE: 4-cycle, liquid-cooled.
 SPEED: 1800 rpm.
 HEAD: L.
 CYLINDERS: 4.
 BORE: 2-5/8 in.
 STROKE: 3 in.
 DISPLACEMENT: 64.9 cu. in.

GENERATOR

TYPE: Inductor
 POLES: 4.
 RATING
 AC: 4500 w, 400 cycle.
 DC: 500 w, 28 v DC.

MANUFACTURER'S OR CONTRACTOR'S DATA

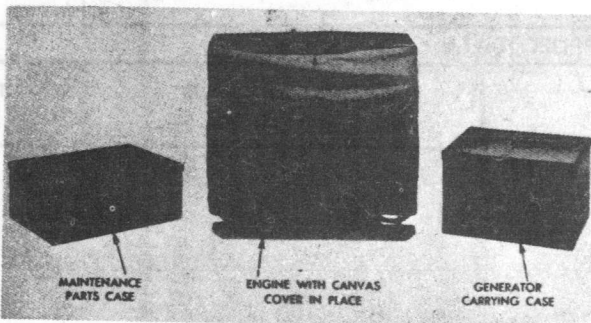
Homelite Corp, Port Chester, N.Y.
 Approximate Cost: \$900.00 with equipment
 spares.

TUBE AND/OR CRYSTAL COMPLEMENT

No Electron Tubes.

REFERENCE DATA AND LITERATURE

NAVSHIPS 95211: Technical Manual for Power
 Unit PU-51/TPS-1B.



Power Unit PU-51/TPS-1B

FUNCTIONAL DESCRIPTION

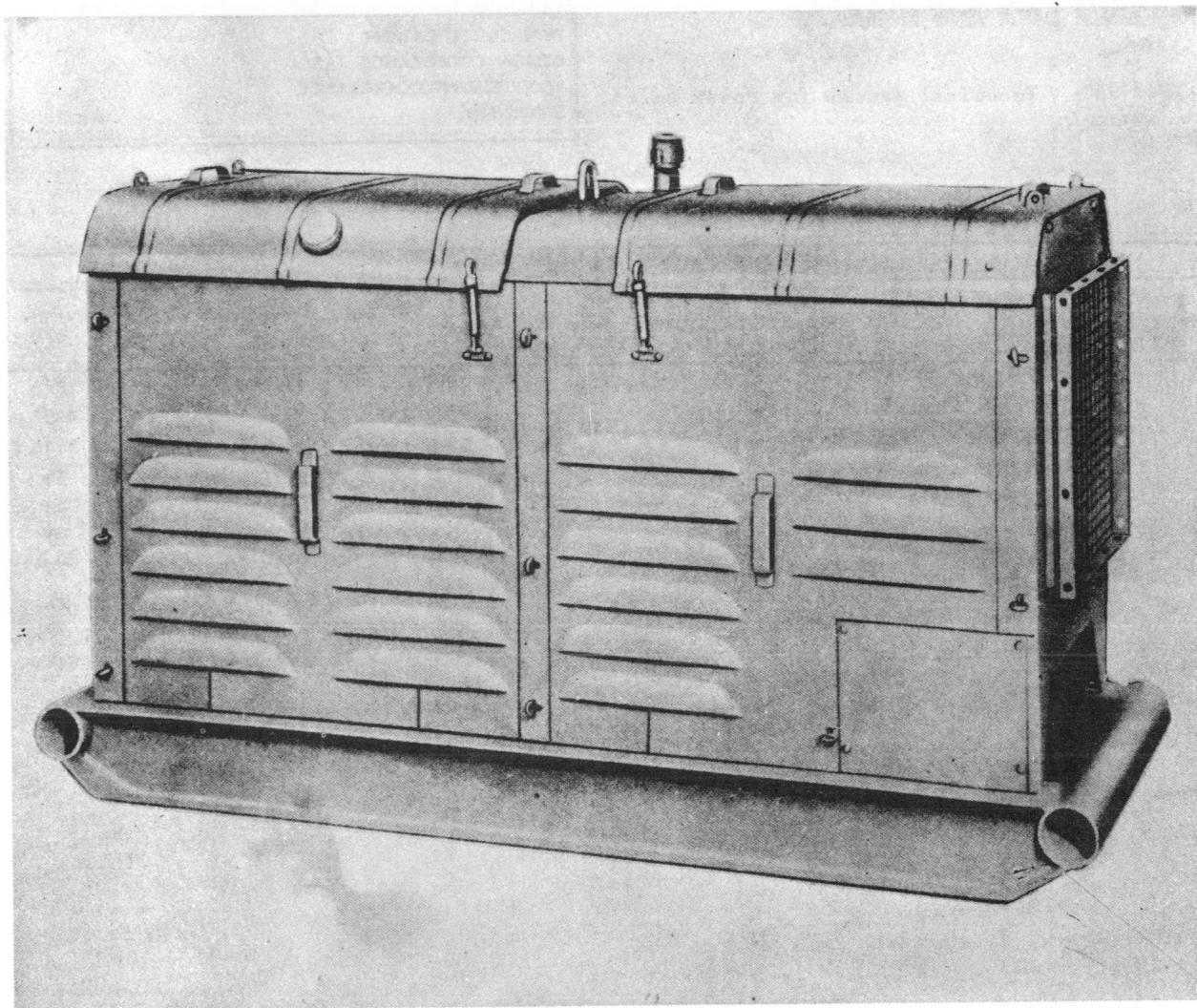
The PU-51/TPS-1B is a self-contained power plant consisting of two main components, a gasoline engine and a generator mounted for operation on two wooden skids.

No field changes in effect at time of preparation (15 March 1957).

TYPE CLASSIFICATION
 DESIGN COGNIZANCE BUSHIPS
 PROCUREMENT COGNIZANCE
 STOCK NO.

EQUIPMENT SUPPLIED DATA

QUANTITY PER EQUIPT	NAME AND NOMENCLATURE	OVERALL DIMENSIONS (inches)	WEIGHT (lbs.)
1	Power Unit PU-51/TPS-1B consist of:		
	Engine (with guard rail)	19-5/8 x 29-1/2 x 38-3/4	341
	Generator	13 x 19 x 30-3/8	133.5
	Generator Carrying Case	13-1/2 x 19-3/4 x 22-3/4	50
	Maintenance Parts Case	9-1/2 x 19 x 24	50



Power Unit PU-58/G

FUNCTIONAL DESCRIPTION

The PU-58/G is a complete, 120/240 v, 60 cps, electric generating plant. It consists of an engine and a generator with the necessary accessories and controls, all mounted in a metal housing which also serves as a skid frame.

No field changes in effect at time of preparation (15 March 1957).

ELECTRICAL AND MECHANICAL CHARACTERISTICS

ENGINE
CYCLE: 4

TYPE CYLINDER HEAD: L.
CYLINDERS: 4.
BORE: 3-1/8 in.
STROKE: 4-3/8 in.
PISTON DISPLACEMENT: 134.2 cu. in.
HORSEPOWER: 15.63.
COMPRESSION RATIO: 6.48 to 1.
BATTERY: 6 v, 100 amp hours.
GENERATOR
RATING: 6.25 kva at 80% pf, 120/240 v, 60 cps at 1200 rpm.

TUBE AND/OR CRYSTAL COMPLEMENT

No Electron Tubes.

REFERENCE DATA AND LITERATURE

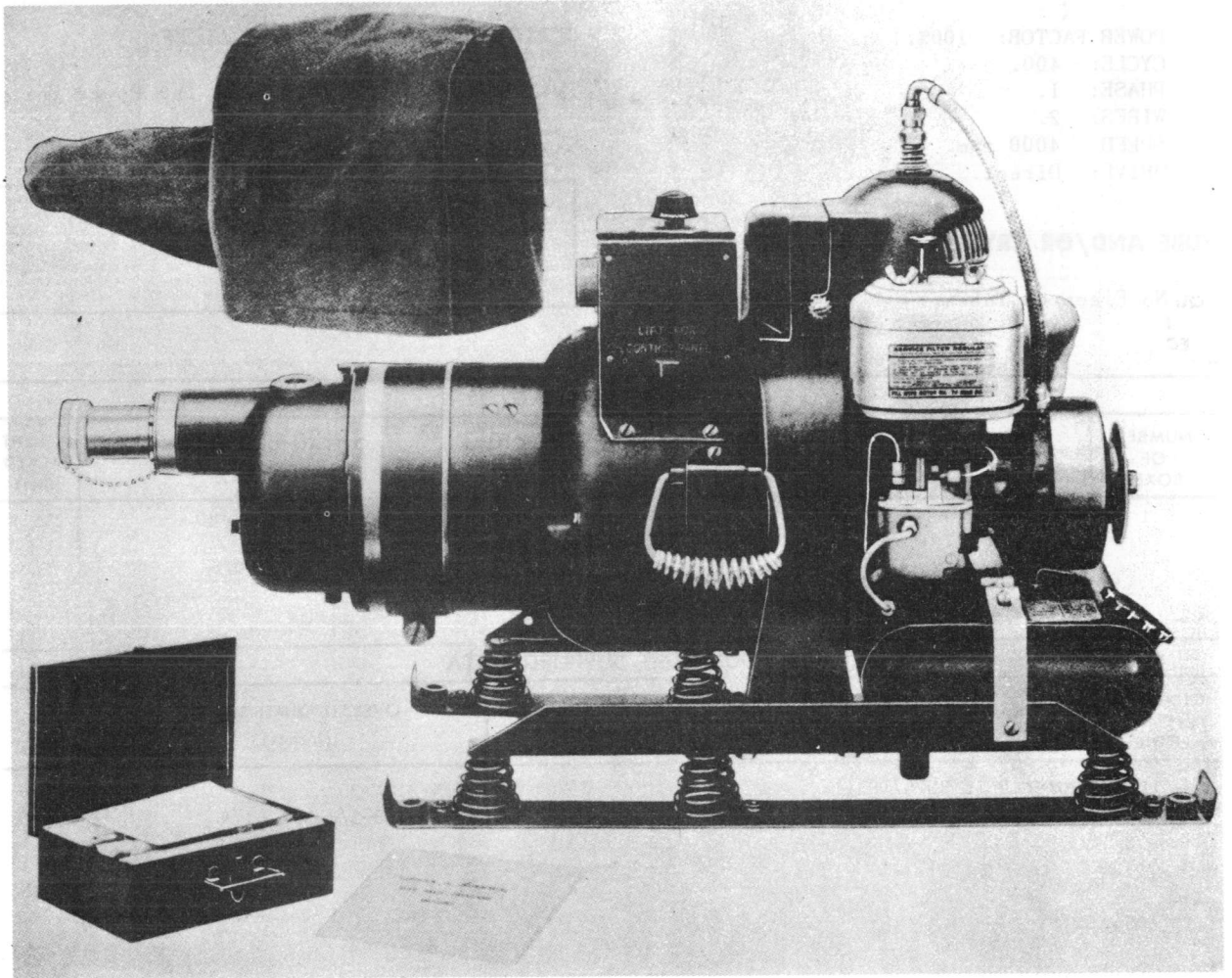
TM11-980: Technical Manual for Power Unit
 PU-58/G.

TYPE CLASSIFICATION
 DESIGN COGNIZANCE TASSA
 PROCUREMENT COGNIZANCE
 STOCK NO.

EQUIPMENT SUPPLIED DATA

QUANTITY PER EQUIPT	NAME AND NOMENCLATURE	OVERALL DIMENSIONS (inches)	WEIGHT (lbs.)
1	Power Unit PU-58/G	28-1/4 X 41 X 69-1/4	1586
1	Engine W/Accessories	22-1/2 X 27 X 30-1/2	413
1	Generator W/Adapter Ring	19 X 19-1/2 X 29-3/4	564
1	Radiator Assembly	8-1/2 X 20 X 23-1/2	35
1	Battery	7 X 9 X 10	48
1	Fuel Tank	11-3/4 X 14 X 24-1/2	20
1	Tool Box	6-1/4 X 8-1/4 X 22-1/4	11
1	Control Panel Assembly	5-1/2 X 16-1/2 X 20-1/4	31
1	Auxiliary Control Assembly	8 X 9-1/2 X 24-1/4	30
1	House and Skid Base	28 -1/4 X 41 X 69-1/4	434

POWER UNIT



Power Unit PU-6/TPS-1

FUNCTIONAL DESCRIPTION

The PU-6/TPS-1 is a compact, self-contained, portable electric generating set consisting of a 1-cylinder, 2 cycle, air-cooled, manual-starting (rope) gasoline engine directly connected to an AC, DC generator of the dual-winding type. A waterproof canvas cover is furnished with this power unit.

The PU-6/TPS-1 is used to furnish power for the operation of test sets AN/MPN-7, AN/MPM-11, AN/MPM-15, AN/MPM-20, Radio Set AN/TPS-3 and Transmitting Set AN/TPT-1.

No field changes in effect at time of preparation (15 March 1957).

ELECTRICAL AND MECHANICAL CHARACTERISTICS

ENGINE

RATED: 4.5 hp at 4000 rpm.
 CYLINDER: 1.
 BORE: 2-3/8 in.
 STROKE: 2-1/2 in.
 COMPRESSION RATIO: 5.85 to 1.
 CYCLE: 2.
 HEAD: Valveless.
 SPEED: 4000 rpm.
 FUEL USED: Gasoline and oil mixed.

GENERATOR

TYPE: AC/DC, dual winding.

RATING

DC: 0.4 kw (400 w), 27.0 v, 14 amp.
 AC: 1.4 kw (1400 w), 120 v, 12 amp.

October 1957

PU-6/TPS-1

POWER UNIT

POWER FACTOR: 100%.
 CYCLE: 400.
 PHASE: 1.
 WIRES: 2.
 SPEED: 4000 rpm.
 DRIVE: Direct.

REFERENCE DATA AND LITERATURE

TM11-933: Technical Manual for Power Unit
 PU-6/TPS-1.

TUBE AND/OR CRYSTAL COMPLEMENT

No Electron Tubes.

TYPE CLASSIFICATION	
DESIGN COGNIZANCE	TASSA
PROCUREMENT COGNIZANCE	
STOCK NO.	

SHIPPING DATA

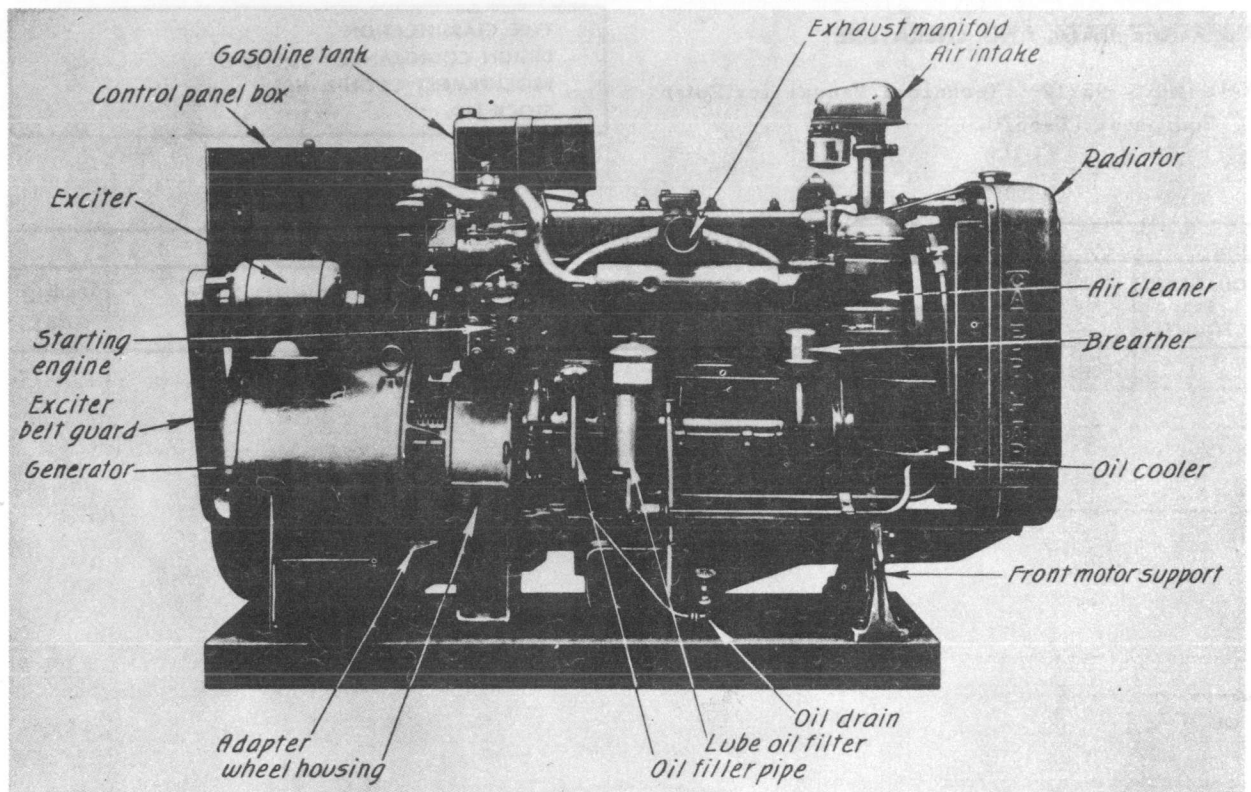
NUMBER OF BOXES	CONTENTS AND IDENTIFICATION	VOLUME (Cu.Ft.)	OVERALL DIMENSIONS (inches)	WEIGHT PACKED (lbs.)
1	Power Unit PU-6/TPS-1 Tool Box	12	21-1/2 X 23-1/8 X 40	235

EQUIPMENT SUPPLIED DATA

QUANTITY PER EQUIPT	NAME AND NOMENCLATURE	OVERALL DIMENSIONS (inches)	WEIGHT (lbs.)
1	Power Unit PU-6/TPS-1	17 X 21 X 35	128
1	Tool Box	3-3/4 X 8-1/4 X 12-1/4	16

POWER EQUIPMENT

PU-66/U



Power Unit PU-66/U

FUNCTIONAL DESCRIPTION

The PU-66/U is arranged for mounting in a covered truck and one engine has a puller type and one engine has a pusher type fan.

No field changes in effect at time of preparation (18 March 1957).

ELECTRICAL AND MECHANICAL CHARACTERISTICS

DIESEL ENGINE

MODEL: 4-stroke cycle, water cooled.

CYLINDER: 4.

BORE: 3-3/4 in.

STROKE: 5 in.

HORSEPOWER, FULL LOAD: 27.5.

STARTING ENGINE

MODEL: 4-stroke cycle, water cooled, spark ignition.

CYLINDER: 2.

BORE: 2-3/4 in.

STROKE: 3 in.

BRAKE HORSEPOWER: 10 at 3000 rpm.

ALTERNATOR

RATED: 14 kw, 88% pf.

SPEED: 1200 rpm.

VOLTS: 120 v at full load

PHASE: single.

WIRE: 3.

CYCLE: 60.

EXCITER

RATED: 1.5 kw, 23.4 amp, 64 v.

MANUFACTURER'S OR CONTRACTOR'S DATA

Duplex Truck Co, Lansing, Mich

Contract Nxss-29812.

Approximate Cost: \$5000.00 with equipment spares.

TUBE AND/OR CRYSTAL COMPLEMENT

No Electron Tubes.

PU-66/U

POWER EQUIPMENT

REFERENCE DATA AND LITERATURE

NAVSHIPS - 95212: Technical Manual for Power Equipment PU-66/U.

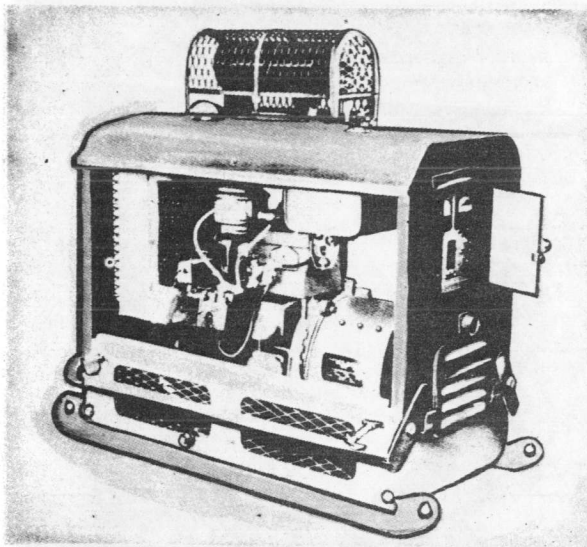
TYPE CLASSIFICATION DESIGN COGNIZANCE BUSHIPS PROCUREMENT COGNIZANCE STOCK NO.

EQUIPMENT SUPPLIED DATA

QUANTITY PER EQUIPT	NAME AND NOMENCLATURE	OVERALL DIMENSIONS (inches)	WEIGHT (lbs.)
1	Power Equipment PU-66/U	26 x 52-3/8 x 79-1/8	

POWER UNIT

Radio-Auxiliary
PU-8/TTQ-1



Power Unit PU-8/TTQ-1

FUNCTIONAL DESCRIPTION

The PU-8/TTQ-1 is an electric generating set consisting of a 2 cylinder, 4 cycle, L head, liquid-cooled, manual starting, gasoline engine, directly connected to an AC generator of the self-exciting type.

No field changes in effect at time of preparation (4 April 1957).

ELECTRICAL AND MECHANICAL CHARACTERISTICS

ENGINE

TYPE: 4 cycle.
TYPEHEAD: L.
CYLINDERS: 2.
BORE: 3 in.
STROKE: 2-3/4 in.
HORSEPOWER: 7 hp at 1800 rpm.

COMPRESSION RATIO: 5.5 to 1.
SPEED: 1800 rpm.
FUEL: Gasoline.
STARTING: Manual, crank.

GENERATOR

TYPE: AC, 4 pole, self-excited.
RATING: 3 kw.
VOLTAGE: 115 v.
CURRENT: 27 amp.
CYCLE: 60 cps.
PHASE: Single.
POWER FACTOR: 80%.
WIRES: 2.
SPEED: 1800 rpm.
DRIVE: Direct.

TUBE AND/OR CRYSTAL COMPLEMENT

No Electron Tubes.

REFERENCE DATA AND LITERATURE

TM11-223: Technical Manual for Signal Equipment Directory, Power Units.

TYPE CLASSIFICATION
DESIGN COGNIZANCE TASSA
PROCUREMENT COGNIZANCE
STOCK NO.

EQUIPMENT SUPPLIED DATA

QUANTITY PER EQUIP	NAME AND NOMENCLATURE	OVERALL DIMENSIONS (inches)	WEIGHT (lbs.)
1	Power Unit PU-8/TTQ-1	22 x 33 x 44	583